



SURFACESTUDIO

YOUR VISION, YOUR SURFACE

Foamed Aluminum

New Decorative Material

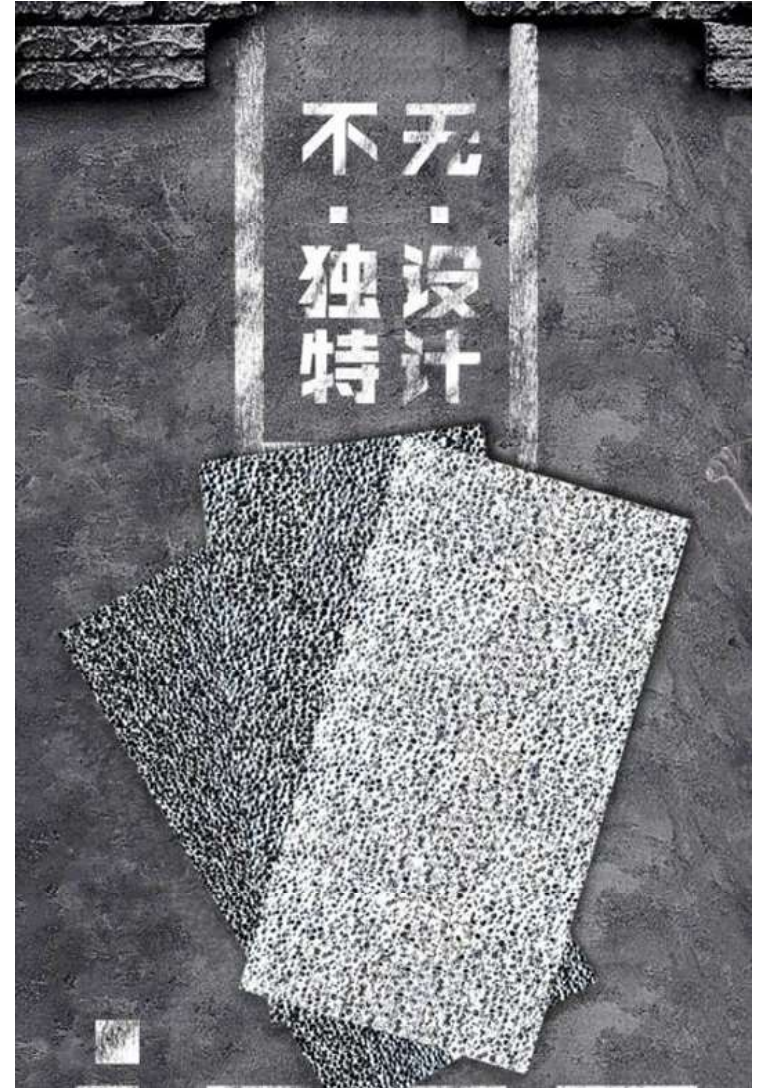
Content

Introduction
Color Display
Installation
Case Study



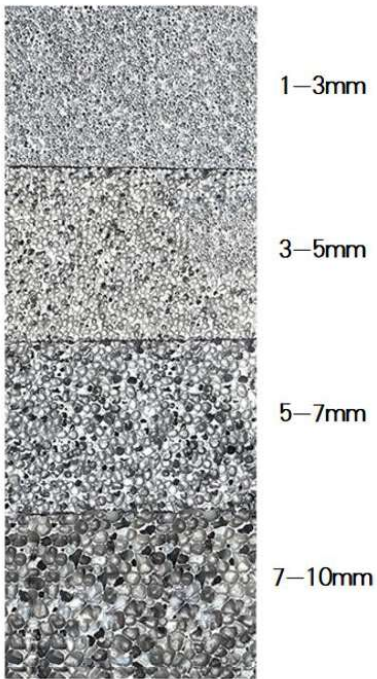
Introduction

Foamed Aluminum is a lightweight and attractive building material with strong impact resistance, fire resistance, high temperature resistance, sound insulation, noise reduction, low thermal conductivity, high electromagnetic shielding, and excellent weather resistance. It can be easily installed and coated, and is suitable for use on both internal and external walls, as well as ceilings, floors, stairs, and other applications. When combined with lighting effects, it can also be used for building signs, shopping malls, hotels, stadiums, and other venues.



Introduction

Product name: Aluminum foam
Ingredients: Large amount of metal aluminum and a small amount of calcium and rare metals
Surface color: Aluminum primary color, self-color (fluorocarbon paint for outdoor, no requirement for indoor)
Air gap aluminum: 60-80%

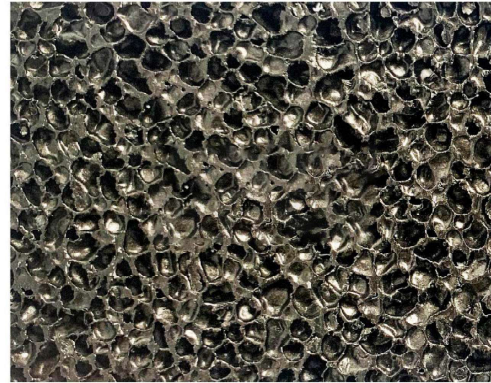


NAME	SIZE	TYPE
Closed standard edition	Thickness of 5 mm Size: 500 * 1000 mm Size: 1000 * 1000 mm	Aperture 1-3 mm Aperture 3-5 mm Aperture 5-7 mm Aperture 7-10 mm
Closed standard edition	Thickness: 10 mm Size: 500 * 1000 mm Size: 1000 * 1000 mm	Aperture 1-3 mm Aperture 3-5 mm Aperture 5-7 mm Aperture 7-10 mm
Pervious to light version	Thickness: 8 mm Size: 500 * 1000 mm Size: 1000 * 1000 mm	Aperture 7-10 mm Aperture 8-12 mm

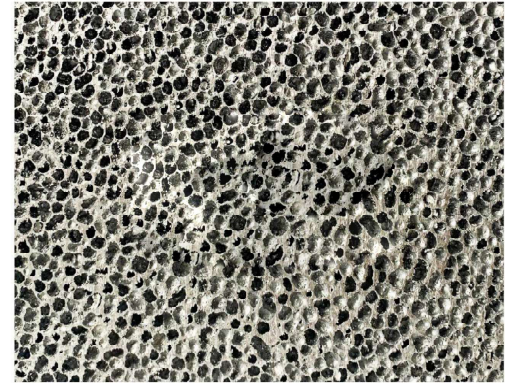
Color Display



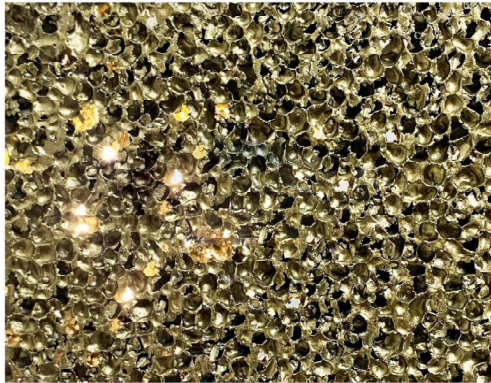
Golden



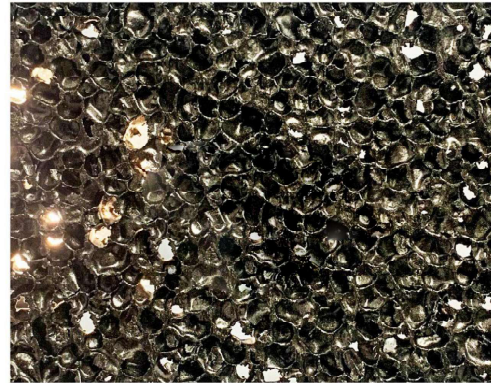
Gun black



Silver



Golden light



Gun black light



Silver light

Installation

External wall installation

Dry hanging / main keel / auxiliary keel / hanging plate / screw or bolt

All kinds of structural adhesive or high strength metal adhesive (3M) can be used for fixation

Internal wall installation

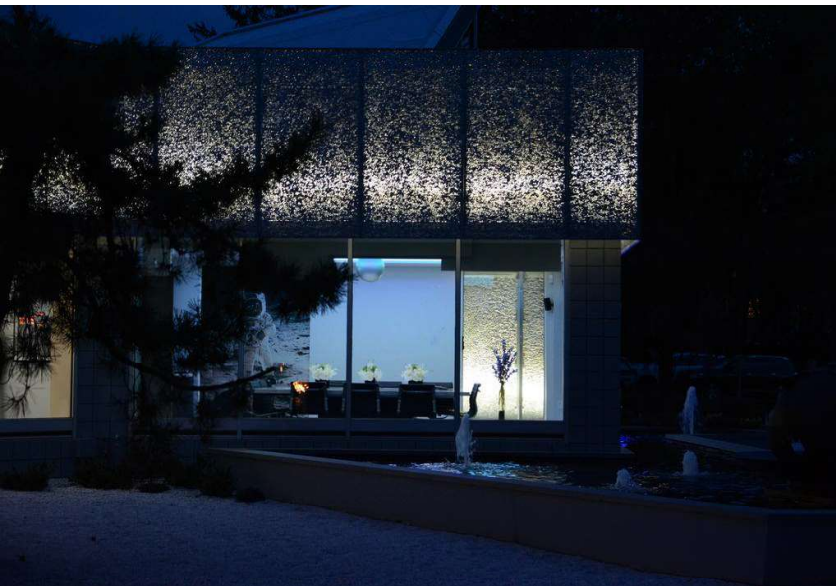
Dry hanging / main keel / auxiliary keel / screw fixation

Apply glue and fix on flat structure (Temporarily fix with support for 24 hours or longer, according to the performance of the glue)

Ceiling installation

Foam aluminum is light and easy to install using mechanical fixation (screws, bolts), I-hanging, high strength metal adhesive, or magnetic absorption.





Case Study

