



SURFACESTUDIO

YOUR VISION, YOUR SURFACE

S Soft Stone

New Decorative Material

Content

Introduction
Color Display
Installation
Case Study



Introduction

Soft Stone mimics the natural pore stone effect. It is fine textured and can bend creating arc shapes. It is a perfect decorative element; looks and feels natural, full of style and rich in feel. Simply put, it allows for infinite design possibilities.



Introduction

Product name: S soft stone

Raw materials: Natural stone powder

Product technology: Pressing molding

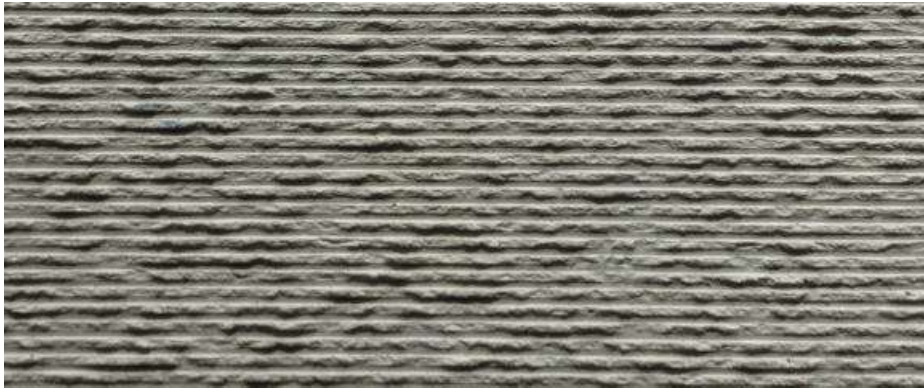
Patterns and styles: 14 categories

Product features: Light weight, thin product, strong flexibility, good air permeability, fireproof grade A, waterproof, impact resistant

Application space: Indoor and outdoor walls. Can also be used for ceilings. Suitable for high-altitude buildings, special shapes, private homes and commercial space background walls



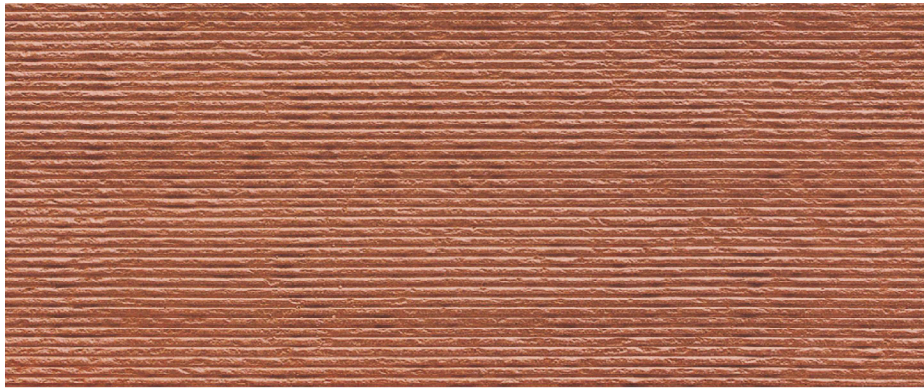
Color Display



Cut Stone - Concrete



Cut Stone - Beige



Cut Stone - Red

Color Display



MS Line Stone - White



MS Line Stone - Dark Grey



Golden Travertine - Grey Golden



Golden Travertine - White Golden

Color Display



MS Travertino - White



Roman Yellow Travertoni



MS Travertino - Concrete

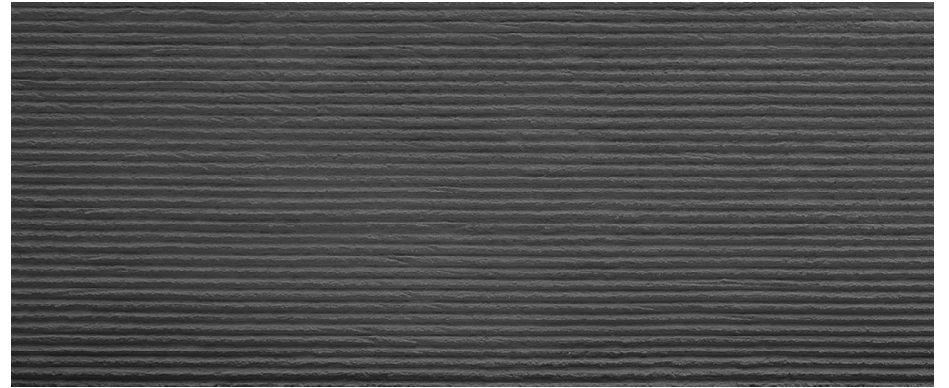


MS Travertino - Beige

Color Display



Round Line Stone - White



Round Line Stone - Dark Grey

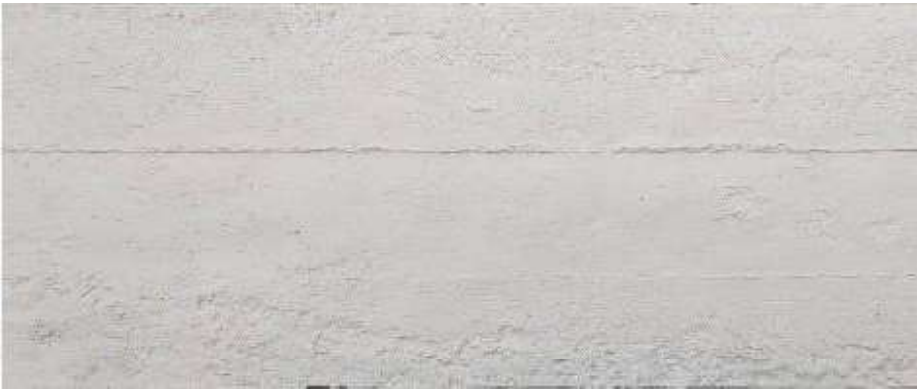


Square Line Stone - White



Square Line Stone - Dark Grey

Color Display



MS Concrete Board - Pure White



MS Concrete Board - Medium Grey



MS Concrete Board - Concrete

Color Display



Muretto Stone - Light Grey



Muretto Stone - Dark Grey



Charcoal Burnt Wood Board



Muretto Stone - Beige

Color Display



MS Travertino - Concrete



MS Travertino - White



MS Fine Line - Concrete



MS Fine Line - White

Color Display



Wood Gird - Mahogany



Wood Gird - Burlywood



HQ Cement - Light Grey



HQ Cement - Medium Grey

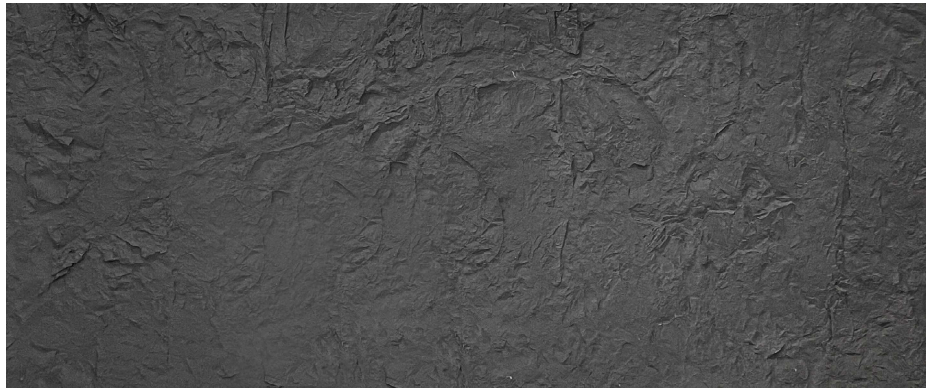
Color Display



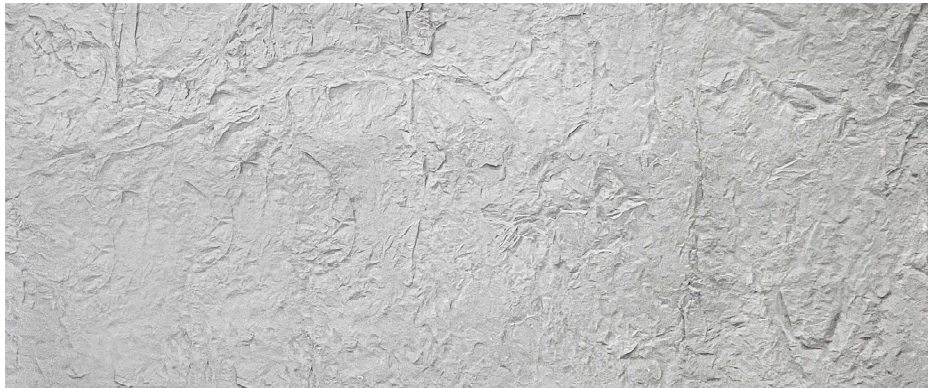
Foamed Aluminum Alloy - Silver



Foamed Aluminum Alloy - Gold

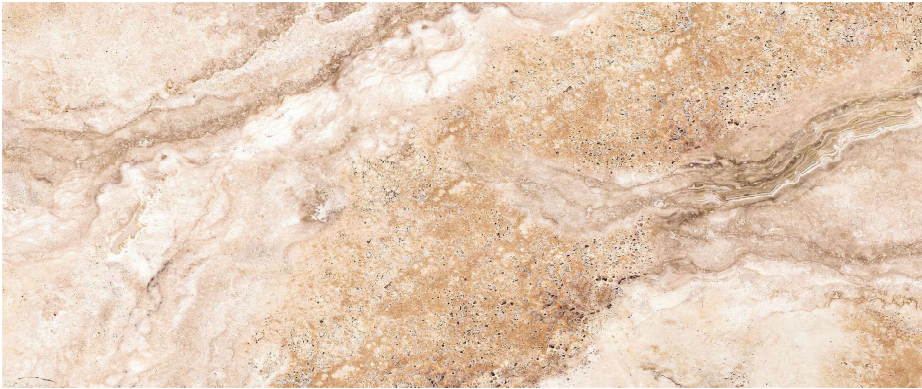


Axe Stone - Off White

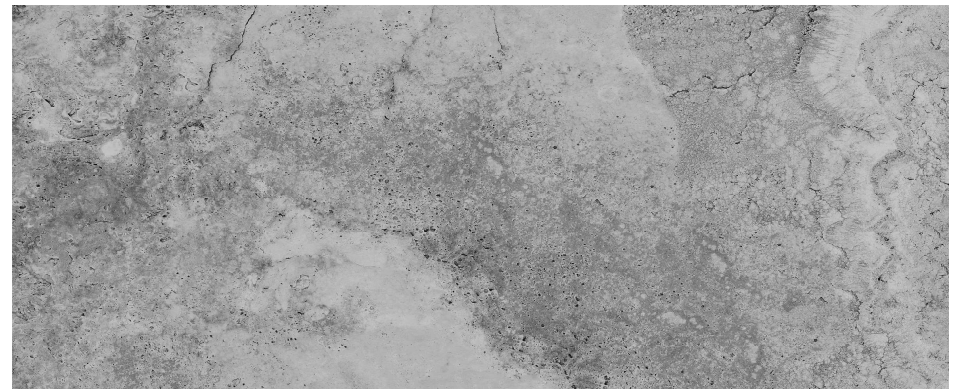


Axe Stone - Dark Grey

Color Display



Cloud Sand Travertino - Tan



Cloud Sand Travertino - Dark Grey

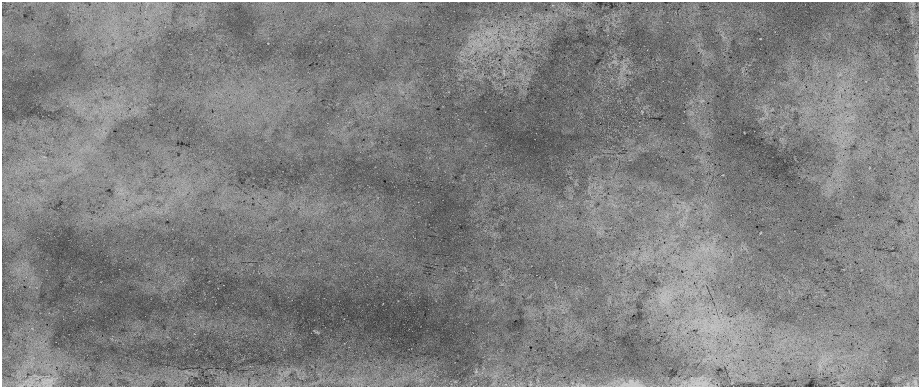


Line Travertino - Tan



Line Travertino - Light Grey

Color Display



HQ Cement - Dark Grey



HQ Cement - Light Grey



Lime Stone - Dark Grey



Lime Stone - Beige

Color Display



Creek Sand - Tan



Creek Sand - Dark Grey



Roman Column - Cement

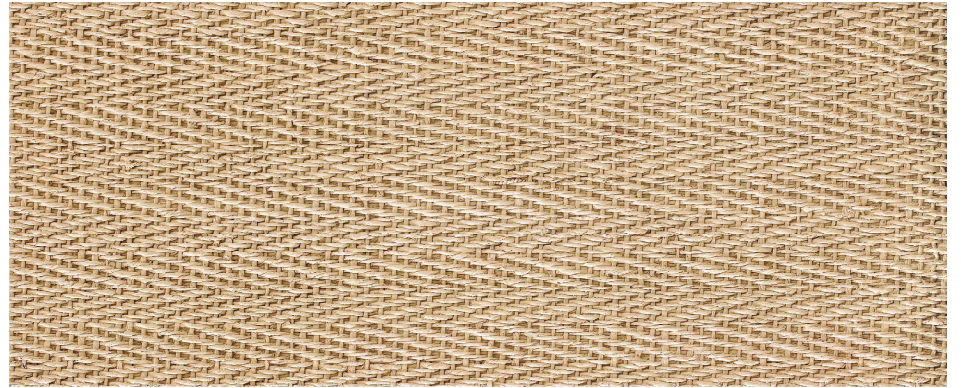


Roman Column - Tan

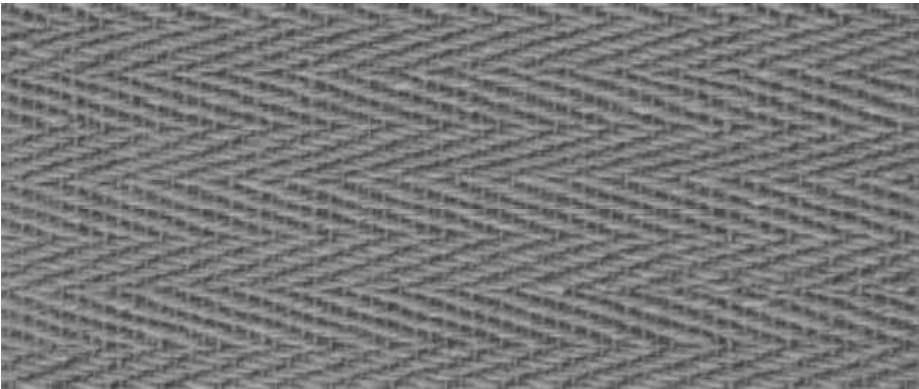
Color Display



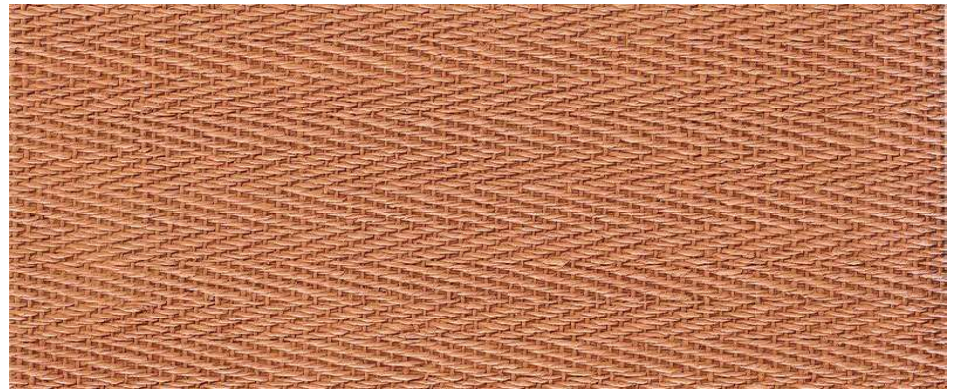
MCM W Weaving - Warm White



MCM W Weaving - Khaki



MCM W Weaving - Cool Grey



MCM W Weaving - Orange

Color Display



Rough Granite - Grey



Rough Granite - Dark Grey



Rough Granite - White

Color Display



Rockcut Stone - Off White



Rockcut Stone - Dark Grey



Herringbone Weave - Earthy Yellow

Color Display



MS Wood Concrete Board - Medium Grey



MS Wood Concrete Board - Light Grey



MS Ripple Board - Pure White



MS Ripple Board - Concrete

Installation

Make sure the base is treated and leveled



Set the position using a spring line



Apply adhesive on the back using a scraping comb



Adjust the seam as necessary



Apply the special joint agent



Scrape of excess using a spatula



Clean and maintain

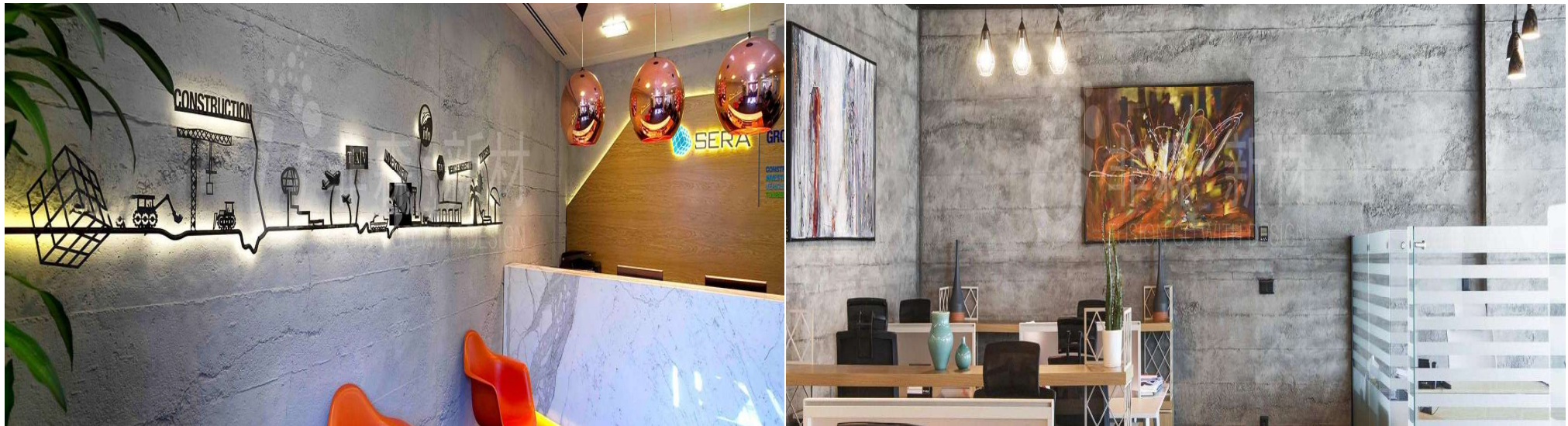


Advantages

- Purify & absorb Formaldehyde
- Light weight
- Aging Resistant ; no deterioration
- Soft & flexible
- Long Life

Disadvantages

- Not suitable for floors
- This product is made of natural stone powder molding. There will be a natural color difference between batches. It cannot be replicated with paint color
- The cutting size of the product is within a $\pm 10\%$ according to the industry standard. It cannot have a smaller tolerance such as ceramic tiles



Case Study



Qing Cement
Industrial style is the way to go

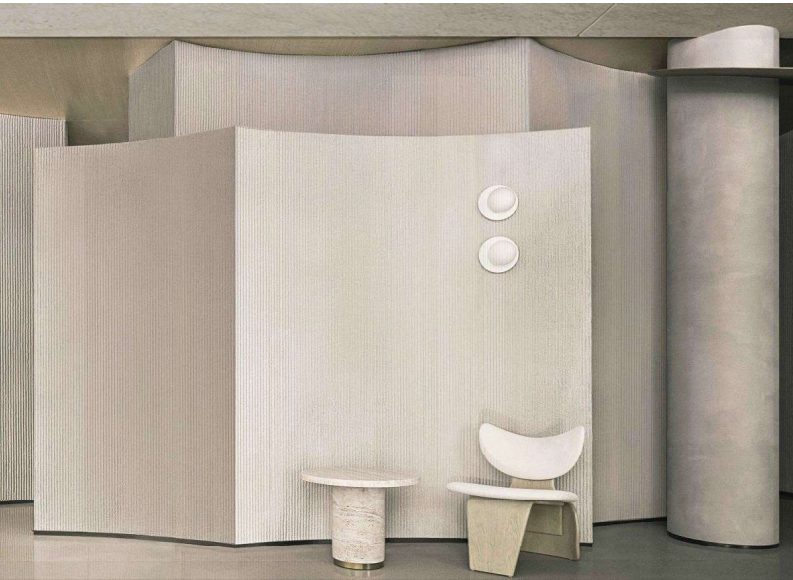


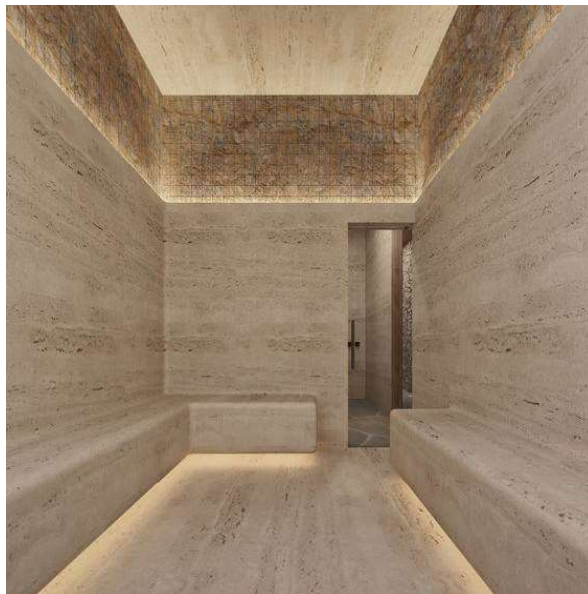
Concrete Cast Slab





Vein Stone







Time flowing stone