

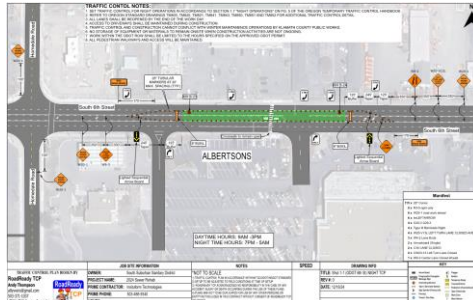
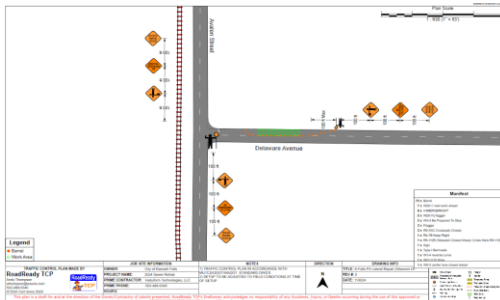


## Traffic Control Plan Design

RoadReady TCP designs both site-specific custom traffic control plans and typicals using modern computer design software coupled with satellite, aerial, and ground-level images of roadways. This allows us to produce highly detailed plans for almost any road in America.

Our industry leading MUTCD-compliant plans also have a clean and professional single-page layout, which is more intuitive to understand compared to expensive multi-page engineered plans that are generally only required for major roadway improvements. RoadReady TCP plans still contain all the necessary details for each section of road and the exact placement of equipment, but at a much lower cost. Plans are also branded exclusively with your company's name and logo as a standard design feature if requested.

Determining where to begin in planning for your next traffic control operation is as easy as contacting RoadReady TCP.



- **Basic Plans:** Only \$175 per sheet
- **Expedited & Complex Plans:** Call for Pricing

\* **Basic Plans** (3-5 Business Days) typically 1 sheet per plan

\* **Expedited & Complex Plans**

Expedited Plans are (12-48 Hours).

Complex Plans Lead Time is generally (8-10 Days).

Complex plans include ODOT/WSDOT/PBOT/SDOT approved TCP's and typically include multiple intersections, work phases, multi-lane roads or detours and typically include setups requiring 2 or more pages.

\* If a **site visit is required** additional **hourly rate will be added** for time involved on job and port to port travel time.

\* **Minimum of two business days' notice** required to guarantee completion of traffic control plan.

\* Traffic plans are **not drawn to scale**.

[www.roadreadytcp.com](http://www.roadreadytcp.com)

ATSSA CERTIFIED

## WHAT WE OFFER

- TRAFFIC CONTROL PLANS
- AFFORDABLE PRICING
- QUICK TURNAROUND
- FREE REVISIONS
- MUTCD COMPLIANCE

## BUSINESS HOURS

MONDAY - FRIDAY  
9 A.M. TO 5 P.M. PST

## SECURE PAYMENT



STARTING AT ONLY  
\$175 PER PLAN

## ROADREADY TCP

Andy & Tina Thompson  
Salem, OR  
503-371-1037

[info@roadreadytcp.com](mailto:info@roadreadytcp.com)