

BEFORE the VEIL

A SERIES OF GUIDES FOR BRIDES TO BE

Bridal Hair Accessories: The Ultimate Guide to Perfecting Your Wedding Day Look



Hello & Welcome

Your wedding day is one of the most special occasions of your life, and every detail matters, from your dress to your shoes and, of course, your hair. When it comes to bridal hair, the accessories you choose can transform your look and add that extra touch of magic to your overall ensemble. Whether you're dreaming of a classic, elegant vibe, a boho-chic style, or something uniquely modern, the right accessories will not only complement your hair but elevate your entire bridal look.

This guide will help you navigate the world of bridal hair accessories, from delicate combs and sparkling tiaras to vintage-inspired pins and floral crowns. We'll explore different styles, how to choose what best suits your hairstyle, and tips on wearing each piece with confidence. Let's dive in and find the perfect finishing touch that will make you feel stunning on your big day.

Claire Hartley

Contents

HAIRPINS AND CLIPS	03
--------------------	----

HEADBANDS	04
-----------	----

COMBS	05
-------	----

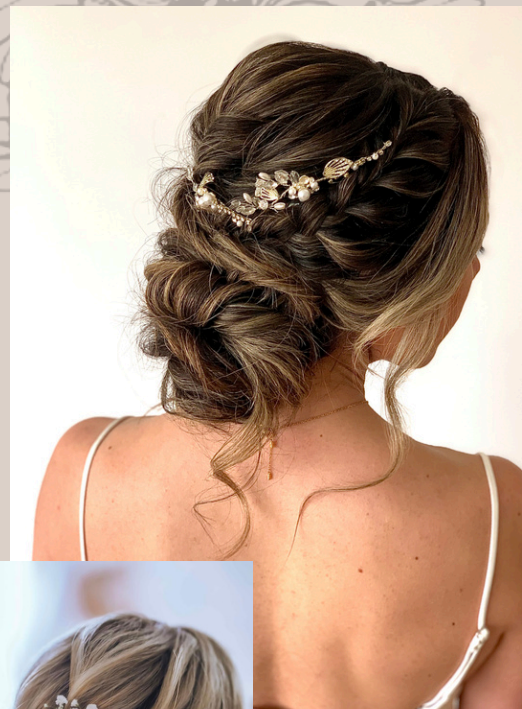
HAIRVINES	06
-----------	----

TIARA & CROWN	07
---------------	----

COMBINATIONS	08
--------------	----

FRESH FLOWERS	09
---------------	----

THE VEIL	10-11
----------	-------



"EVERY BRIDE DESERVES TO SHINE, AND THE PERFECT ACCESSORY IS THE SPARKLE THAT COMPLETES HER STORY."

Hairpins and Clips

- **Rhinestone or pearl hairpins:** A delicate, elegant touch that can add just the right amount of sparkle.
- **Floral clips:** Fresh or faux flowers in soft pastels or vibrant hues bring a whimsical vibe, ideal for a romantic garden wedding or festival theme.
- **Crystal pins:** For brides who want some shine without going overboard, these are perfect for adding subtle glamour.

Placement Tips:

- I love pins as they are so versatile, either cluster them together or spread them organically throughout the style to complement the flow and direction of the hair. They are also very easy to position and re-position if necessary.
- For an updo, you can arrange several hairpins along the side of your head, or nestle them at the base or within your bun or chignon.
- For loose hair, place the pins sparingly through the waves to catch the light and create dimension.
- When placing in a style, "weave" the pin down wards into the hair for a secure fit.



A HEADBAND IS A FANTASTIC OPTION FOR BRIDES SEEKING SOMETHING SLIGHTLY MORE MODERN OR BOHO CHIC. FROM SLEEK METALLIC BANDS TO DELICATE LACE, THERE'S A HEADBAND STYLE FOR EVERY TASTE.

Headbands

- **Sleek metallic bands:** These are minimal yet bold, often set with crystals or pearls for a modern, minimalist bridal look.
- **Lace or floral headbands:** Perfect for boho or vintage styles, depending on the design these can provide a romantic soft touch to the hairstyle or be a bold statement in a bridal look.

Placement Tips:

- Headbands are usually worn around a three finger width back from the hairline. For soft waves, this will give your hair a gentle, ethereal frame.
- Ensure the fit of your headband is comfortable. Make sure it doesn't pinch or slide—this will matter after hours of dancing and photos!
- Always try the headband during your dress fitting to see how it pairs with your dress, veil, and earrings.
- Ensure the headband is secure and complements your chosen style at your preview/trial. Thin or fine hair: Go for a lightweight headband with combs or grips attached. Thick or curly hair: A wider, more structured headband will stay in place better.



HAIR COMBS ARE A GREAT WAY TO ADD A TOUCH OF VINTAGE CHARM OR A ROMANTIC VIBE TO YOUR BRIDAL HAIRSTYLE. THESE CAN BE ADORNED WITH PEARLS, CRYSTALS, OR EVEN FRESH FLOWERS.

Combs

- **Side combs:** These are ideal for securing loose styles like soft waves or sat just behind the ear in more glam/hollywood waves.
- **Decorative combs:** Place these to the side or in the back of an updo to add dimension and elegance.
- **Match the Style of Your Dress** Vintage dress? Try an Art Deco or floral comb. Romantic lace? Go with pearl or crystal accents. Sleek and modern? A minimalist metallic comb adds a chic edge.

Placement Tips:

- A comb can be placed near the ear or into a chignon or bun, depending on the overall style of your wedding hair. It's perfect for adding that final touch and creating balance within a bridal look.
- You will want to consider the size of the comb and where in your style you will want it to sit. Balance is key in bridal styling, we want to complement the shape and not have something that causes the overall look to be visually unbalanced.
- For added grip, tease the section of hair where you'll place the comb before inserting it.



HAIR VINES ARE PERFECT FOR BRIDES WHO WANT SOMETHING DELICATE AND NATURAL, YET ENCHANTING. THEY CAN BE WRAPPED AROUND A BUN, WOVEN THROUGH A BRAID, OR PLACED ACROSS THE CROWN LIKE A HALO.

Hairvines

- **Gold or silver hair vines:** These are more metallic and delicate, providing a hint of shimmer without overwhelming the look.
- **Floral or leafy hair vines:** These create a soft, bohemian effect a great addition to any boho style.

Placement Tips:

- A hair vine can be woven through the strands of a braid, pinned into an updo, or draped across your forehead for a whimsical, nature-inspired look.
- For a crown effect, place the vine around your head, letting it softly nestle into your hair for a dreamy, fairy-tale finish.
- Be mindful of length when you are buying vines, at your preview find out where you will want it positioned and measure it! If winding within a style or incorporating within a braid or twist add a little additional length to allow for the movement.



"ELYSE" HAIRVINE
WWW.THEBOBBYPIN.CO.UK



USE CODE
"CLAIREHARTLEYSTYLIST"
WWW.THEBOBBYPIN.CO.UK

FOR BRIDES WHO WANT A ROYAL OR FAIRY-TALE LOOK, A TIARA OR CROWN IS A STUNNING OPTION. TIARAS COME IN A VARIETY OF STYLES, FROM SUBTLE AND UNDERSTATED TO ORNATE AND DRAMATIC.

Tiara or Crown

- **Floral crowns:** These are perfect for nature-inspired weddings or rustic, outdoor venues.
- **Crystal or pearl tiaras:** If you're aiming for elegance and grandeur, a shimmering tiara can make you feel like a queen.

Placement Tips:

- Tiaras and crowns are typically worn just above the forehead or pushed back slightly into the hairline. For an updo, place the tiara directly on top of your styled hair for a regal, high-impact look.
- For a more relaxed style, wear a floral crown slightly tilted to the side for a boho, carefree vibe.



FROM COMBS COMBINED WITH PINS TO VINES WITH MATCHING EARRINGS YOU CAN OFTEN FIND BUNDLES THAT OFFER GROUPED ITEMS.

Combinations

Placement Tips:

- **Combs/Clips and Pins** - A great option for those wanting a heavier piece (the comb) sat higher as a statement and then the matching pins dotted throughout the style. I often use these in boho braids where I scatter the pins down the braid.
- **Match your hair piece to your accessories:** I love this look! Why not match your earrings to your hair! There are some beautiful options that can be tailored to your bridal look. Bold statement earrings, smaller delicate options or perhaps a necklace.



"CARA" COMB & PIN COMBO
WWW.THEBOBBYPIN.CO.UK



"ELMA" EARRINGS
WWW.THEBOBBYPIN.CO.UK



A BEAUTIFUL ADDITION TO ANY STYLE AND EASILY LINKED WITH THE WEDDING THEME AS THEY CAN BE MATCHED WITH THE BOUQUETS AND OTHER WEDDING FLOWERS. THEY CAN WORK FOR THE MORE CLASSIC WEDDING USING A LITTLE GYPSOPHILA OR MORE BOLDLY USED FOR THOSE WITH A BOHO OR FESTIVAL THEME.

Fresh Flowers

Placement Tips:

- Small flowers and foliage can be dotted around a style or grouped together in one area. Try and balance the style visually.
- Placing fresh flowers can be a little tricky, if the head of the flower is large and heavy it will need to be supported within the style. If you choose fresh flowers, talk to your florist and get them to reinforce the stems with wire. Stems are delicate so this will make them easier to place.



A VEIL IS THE PERFECT FINISHING TOUCH FOR THE BRIDE, ADDING ELEGANCE, TRADITION, AND A HINT OF MYSTERY. WHETHER LONG AND DRAMATIC OR SHORT AND SIMPLE, IT ELEVATES THE BRIDAL LOOK WITH TIMELESS CHARM.

The Veil

A veil is a timeless bridal accessory that instantly transforms your look into something regal and ethereal. There are different lengths to consider:

- **Birdcage veils:** These are short, dramatic veils that cover only part of your face and are ideal for vintage-inspired looks.
- **Elbow and fingertip veils:** A classic choice that drapes gracefully behind you and adds an elegant flow to your gown.
- **Cathedral veils:** These are long and dramatic, perfect for grand weddings, creating a sweeping effect as you walk down the aisle.

Placement Tips:

- For veils, they are typically attached at the crown, or slightly below the crown, for a more natural and flattering look. If you're wearing your hair up in a bun or chignon, place the veil at the base of your updo for a sophisticated look. For loose waves or curls, try placing the veil a little higher for a more voluminous effect.



USE CODE
"CLAIREHARTLEYSTYLIST"
WWW.THEBOBBYPIN.CO.UK

Veils on Combs

Veils that are on combs are generally placed either low or high on the crown. Ensure you are aware of the curve of the comb and have it the right way so it sits nice and snug to the head.

You will also want to make sure that the comb has something to hold onto. Either some tight backcombing at the root or a small hidden braid can work wonders. Fitting a veil to a down style on silky hair without having taken some steps to create a base for it to hold on to is not recommended... it will slip right out! Disaster!.

Once the veil is in, the weight of it will pull the comb down so it will feel nice and secure. If you have any concerns, it can be reinforced further by gripping either side.



Veils on Loops

When you need to position a veil under a low bun you may need to re-think how it will be attached. A comb is not only likely to be a difficult to place but it may also disrupt the style you have worked so hard to achieve, especially when it's being removed later in the day!

Taking the veil off the comb is a great way around this. Adding the loops you can see in the photo will allow the veil to be fitted neatly and securely under the bun using grips.

The weight of the veil will be pulling the veil down so a stylist must be aware of this when placing the grips, do not push them up... they will fall straight out with the weight. Angle them and weave the grips in a downward angle for a secure placement. There you have it, now you can leave for the ceremony confident that your veil will stay in place.



HOWEVER YOU ARE FITTING THE VEIL, BE SURE A MEMBER OF THE BRIDAL PARTY KNOWS HOW TO REMOVE IT. A BRIDE WILL GENERALLY WANT TO TAKE IT OUT AT SOME POINT AND WILL WANT TO DO SO WITHOUT DISTURBING HER HAIR.

USE CODE
"CLAIREHARTLEYSTYLIST"
WWW.THEBOBBYPIN.CO.UK

LET'S WORK TOGETHER
AND CREATE SOMETHING BEAUTIFUL

Ready to find the perfect accessories for your big day?

IF YOU HAVE ANY QUESTIONS PLEASE EMAIL ME AT

CLAIREHARTLEYSTYLIST@GMAIL.COM

USE CODE
"CLAIREHARTLEYSTYLIST"
WWW.THEBOBBYPIN.CO.UK

