

NewPro



CAPABILITY STATEMENT

NewPro Consulting & Engineering Services Pty Ltd ABN 87 623 182 561.
Suite 1, Level 1 41-43 Ord Street West Perth, 6005, Western Australia
Telephone: +61 407 906 585, +61 (08) 6244 5564. www.newproc.com

About NewPro

NewPro Consulting & Engineering Services Pty Ltd is formed and managed by a group of experienced engineering professionals who have broad and successful backgrounds in the design and construction of mineral processing facilities and associated infrastructure requirements, across a wide range of mineral commodities and unit processes.



NewPro has assembled a carefully select team of high quality metallurgical, engineering, procurement, project management, construction and commissioning personnel who will add value to our client's projects through objectives and commitment to deliver successful project outcomes.

NewPro Consulting & Engineering Services Pty Ltd ABN 87 623 182 561.
Suite 1, Level 1 41-43 Ord Street West Perth, 6005, Western Australia
Telephone: +61 407 906 585, +61 (08) 6244 5564. www.newproc.com

Our Services

NewPro undertakes mining project study work ranging from concept, scoping to full bankable feasibility level. Our process and engineering personnel have exceptional experience and know-how in operation, maintenance, optimisation, design and construction of mineral processing and hydrometallurgical facilities, and associated infrastructure. NewPro is able to deliver practical and optimal study solutions and outcomes.

The services we offer include:

- Site and logistical scoping, including definition of basic data requirements;
- Design and supervision of metallurgical test work programs;
- Management of and/or co-ordination with specialist sub-consultants (survey, mining, geotechnical, hydrology, hydrogeology, environmental, etc.);
- Assistance with interfaces with government authorities, regulators, third parties and utility providers;
- Defining optimal site layouts;
- Capital and operating cost estimation;
- Process design and flowsheet development;
- Identification and development of effective project implementation strategies.



NewPro Consulting & Engineering Services Pty Ltd ABN 87 623 182 561.
Suite 1, Level 1 41-43 Ord Street West Perth, 6005, Western Australia
Telephone: +61 407 906 585, +61 (08) 6244 5564. www.newproc.com

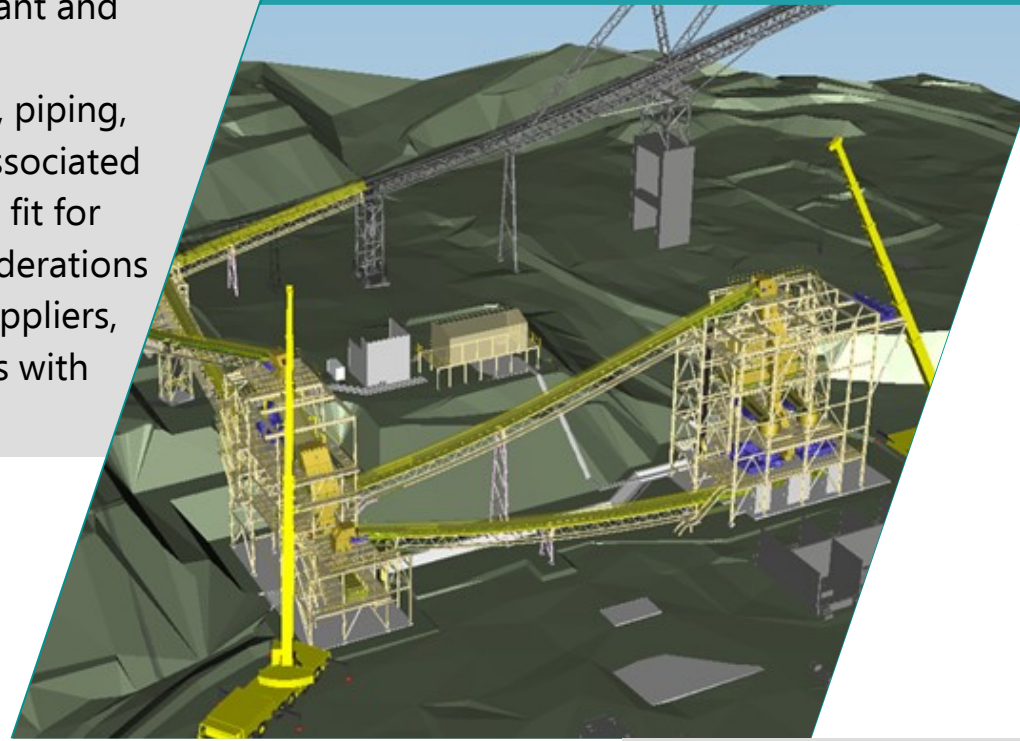
Our Services

NewPro provides engineering design capabilities across all project disciplines necessary to deliver mineral processing and hydrometallurgical plant and associated infrastructure, including process, earthworks, civil works, structural, mechanical, piping, electrical and instrumentation, including all associated project management disciplines. We focus on fit for purpose engineering options, including considerations to second hand and alternative equipment suppliers, and capitalise on strong working relationships with major OEMs.

Our highly experienced engineering and drafting teams utilise advanced design technology, including CAD drafting, 3-D modelling, and specialist system design packages, including Tekla, which enables rapid translation of designs to shop fabrication.

NewPro is able to work with clients in various ways, including FEED stage to increase project definition and optimise plant designs prior to full project implementation, and in collaboration with high value engineering centres and design institutes (or third party engineers required) as required to validate and sign off design in foreign jurisdictions.

NewPro Consulting & Engineering Services Pty Ltd ABN 87 623 182 561.
Suite 1, Level 1 41-43 Ord Street West Perth, 6005, Western Australia
Telephone: +61 407 906 585, +61 (08) 6244 5564. www.newproc.com



Project Management

NewPro provides systems and procedures that fully support the project management function. These systems are implemented and administered by project management teams experienced in the design, procurement, construction and commissioning of mineral processing and hydrometallurgical plant projects.

NewPro can deliver projects under PMC, EPC or EPCM implementation models depending upon client preference and specific project requirements. Current TFIR is 0.0.

We have well networked and experienced project control, procurement and contracts management personnel, and understanding specific requirements for project delivery in challenging locations, including Africa.

NewPro Consulting & Engineering Services Pty Ltd ABN 87 623 182 561.
Suite 1, Level 1 41-43 Ord Street West Perth, 6005, Western Australia
Telephone: +61 407 906 585, +61 (08) 6244 5564. www.newproc.com

Consultancy

In addition to providing full PMC, EPC and EPCM services (or parts thereof), we are very keen to participate in collaborative integrated project delivery teams. NewPro also provides consultancy services to the mining industry.

The consultancy services to the mining industry, including:

- Metallurgical review and optimisation advice;
- Condition reports and repair/refurbishment estimation;
- Minor projects and brownfield upgrades;
- Owner's team augmentation and support;
- Procurement;
- Due diligence services for potential project purchasers and financiers;
- Operations and maintenance review and advice.
- Expert and technical witness

NewPro Consulting & Engineering Services Pty Ltd ABN 87 623 182 561.
Suite 1, Level 1 41-43 Ord Street West Perth, 6005, Western Australia
Telephone: +61 407 906 585, +61 (08) 6244 5564. www.newproc.com

Experience

The NewPro Team has a broad range of experience with many ore types, commodities and in locations across the globe. Commodities include:

- Gold, Platinum and Silver (free milling, refractory, heap leach)
- Copper and Nickel (sulphide concentrators and hydrometallurgical plant)
- Lead and Zinc
- Iron ore and phosphate
- Tin, tungsten and tantalum
- Uranium

Experience has been gained in locations as diverse as North America, Australia, South East Asia, Southern, Central and West Africa, Southern Europe and Turkey, China and the Middle East



NewPro Consulting & Engineering Services Pty Ltd ABN 87 623 182 561.
Suite 1, Level 1 41-43 Ord Street West Perth, 6005, Western Australia
Telephone: +61 407 906 585, +61 (08) 6244 5564. www.newproc.com

Selected Projects

Project	Client	Location	Commodity		Scope	Year
Hod Mine	Artmin Madencilik	Turkey	Gold-Copper		Owner’s Team TSC DFS	Ongoing
Gossan Hill Paste Plant	EMR GG	Western Australia	Gold-Copper-Zinc		PM and PMC	Ongoing
Karlik Gold	Limak – Altinordu	Turkey	Gold		Feasibility study	Ongoing
Cockatoo Island	CMI	Western Australia	Iron Ore		Restart Study	Ongoing
Makuutu REM	Ionic	Asia	Rare Earth Minerals		Feasibility study	Ongoing
Inlice Gold	ESAN	Turkey	Gold		Review study	2020
Garden Well Paste Plant	Regis	Western Australia	Gold		Capital estimate study	2020
Kipoi Copper	Tiger Resources	Democratic Republic of the Congo	Copper	De-Bottlenecking, Options Study Report, and Copper/Cobalt Auxiliary Plant		2020
Nifty Copper Mine	Metals X Limited	Western Australia	Copper	Tailings Dam Lift, Paste Plant Modifications, Heap Leach, SX/EW Restart Study		2020
Fox Harbour	Search Minerals Inc	Canada	Rare Earth Minerals	REE Scoping Study		2020
Browns Range	Nexus Bonam/ Northern Minerals	Western Australia	Rare Earth Minerals	REE Sorting Detailed Engineering		2020
Balya Mine	Esan Eczacıbaşı	Turkey	Lead-Zinc-Copper	Expansion Scoping Study and feasibility study		2020
AL Tank Walkways	FQM	Western Australia	Nickel		Supply and Install	2020
Ispir Mine	Demir Export	Turkey	Copper		Engineering Support	2019
Chatree Gold Mine	Kingsgate Resources	Thailand	Gold		Restart Expert Witness	2018