



itige

Creating spaces for better living

Why choose Us ?



Bringing Dreams to Reality: We believe in turning visions into tangible masterpieces.



Trust: Our foundation is built on long-term relationships and client satisfaction.



Excellence: Quality over quantity defines our approach.



Personalized Design: Every project is uniquely tailored to our clients' lifestyles and needs.

How we work?



Attention to Detail: From conceptualization to execution, we ensure every small element contributes to the overall success.



Collaboration: We work closely with clients, understanding their needs and aspirations.



Expertise: Our team of architects, engineers, and project managers ensures seamless execution and exceptional quality.



Trusted Network: Partnering with reliable vendors, we maintain high standards and efficient processes.

What we provide?



Quality



Lowest price guaranteed



Timely delivery assurance



10 years warranty

Who we are?



"Inspired by Van Gogh's belief that '**Great things are done by a series of small things brought together,**' we embrace the idea that each brick is a unique contributor to our collective growth.

Ittigi is a close-knit family of **trained professionals**, including architects, civil engineers, structural experts, and project managers. With over 10 years of collective experience, we bring diverse perspectives and a passion for creating inspiring spaces.



Your Dream, Our Dream

GET YOUR HOME INTERIOR DONE WITHIN
45 WORKING DAYS



TALK TO OUR SALES TEAM
TO GET ESTIMATE



DESIGN, DRAWINGS
AND APPROVAL



PRODUCTION AT
OUR FACTORY



MATERIALS DELIVERY
TO SITE



INSTALLATION
AT SITE



ON TIME PROJECT
HANDOVER

Mark Your Calendar !

Our Design Process



PLAN

Detailed Apartment Measurement and Precise Drawing Board Representation.



SKETCHUP MODELING

Tailored Designs to Complement Your Space and Preferences.



RENDER

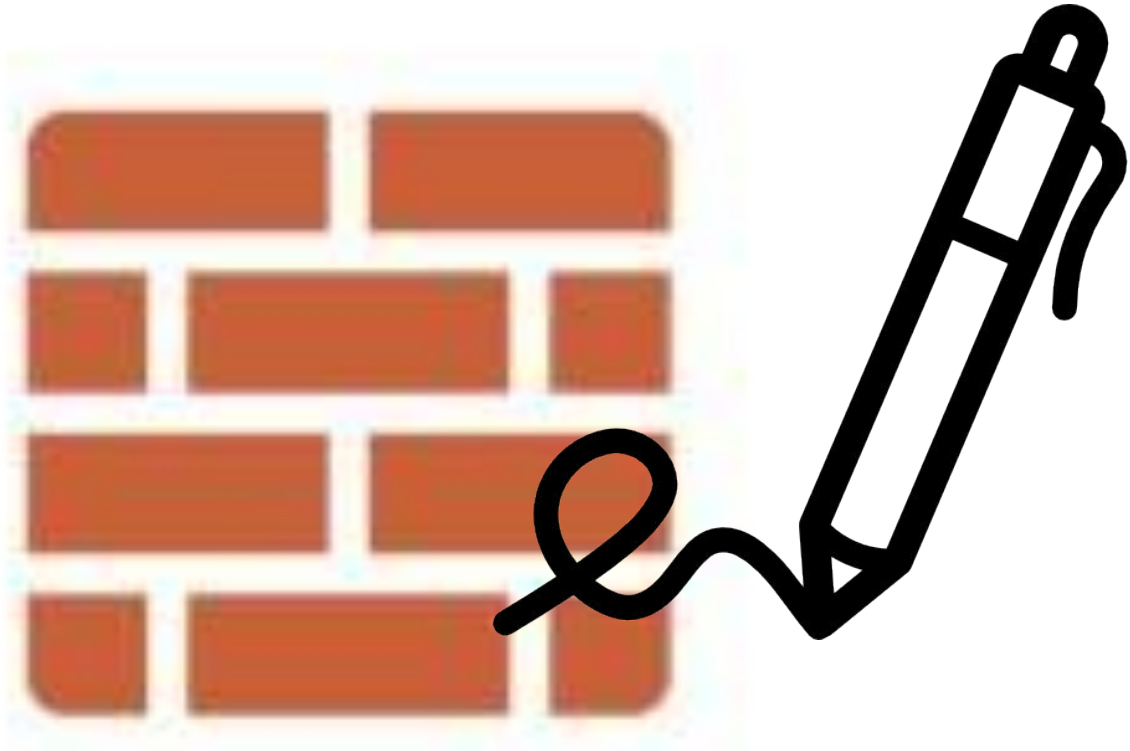
Lifelike Visuals for Stunning Final Presentations.



EXECUTION PROCESS

Ittige's Signature

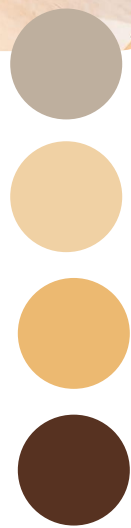
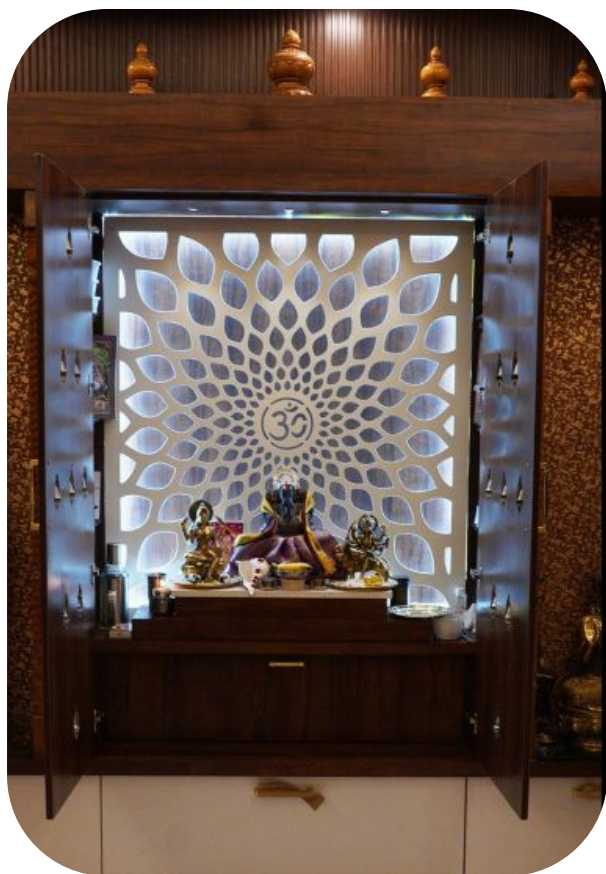
"Ittige," derived from the **Kannada word "BRICK,"** represents our unwavering commitment to our customers who have been a part of this vision.



We leave a signature on every project we undertake—**Ittige's Signature**. Just as the frog mark strengthens a brick's structure, our work strengthens the bond we share with our clients.

Curious to see what our clients have to say about us?

APARTMENT INTERIOR PROJECT



*"We wanted a warm and natural wooden theme, and **ittige interiors** delivered it perfectly. The wooden accents, custom furniture, and earthy tones created a cozy and timeless atmosphere that we couldn't be happier with!" – **Revathi Rajesh***

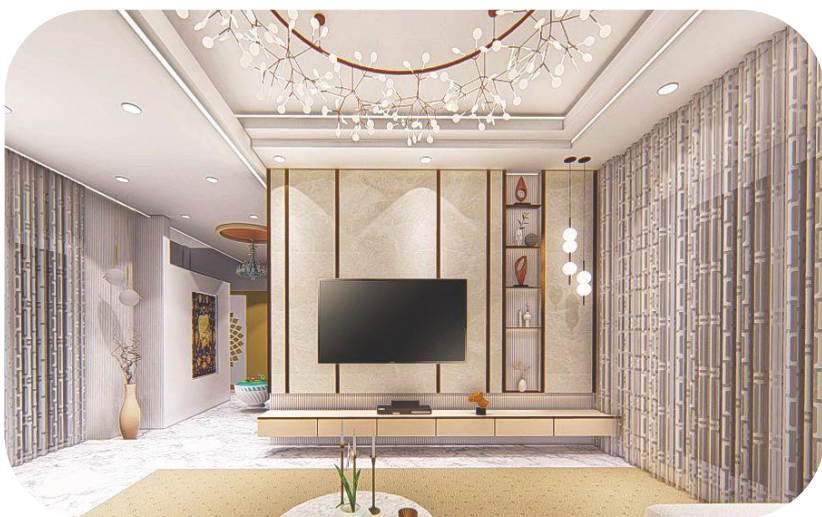
APARTMENT INTERIOR PROJECT



*"We wanted a blend of **minimalistic design with classical touches, and ittige interiors** executed it perfectly. The clean lines paired with elegant trims created a space that feels timeless yet modern!"*
-Geetha



VILLA INTERIOR PROJECT



Luxe Living Room design
*"I never thought my living room could feel so open, inviting, and stylish all at once! **Ittigi interiors** completely reimaged the space, blending modern **elegance with cozy touches** that fit our family perfectly. Every guest who visits can't stop admiring about it. We're thrilled!"*
– **Shilpa**

VILLA INTERIOR PROJECT



"We wanted a unique combination of a concrete wall, yellow Jaisalmer flooring, and teak wood textures, and **ittige's designer** brought it to life beautifully. The result is a stunning blend of earthy tones and modern elegance that **feels warm and sophisticated!**"

- Madhu



ADVOCATES OFFICE



*"We needed an office that balanced functionality with a professional aesthetic, **ittige delivered** beyond expectations. Their exceptional spatial planning, **eye for design**, and **patience** in executing every detail created a workspace that is both efficient and visually impressive."*

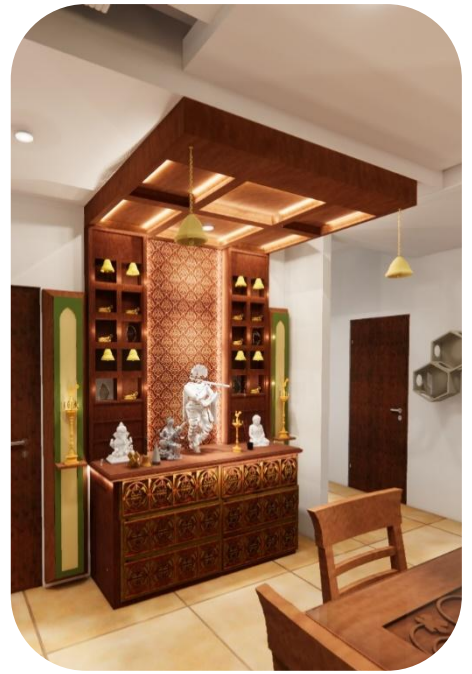
– Swaroop Sreenivas



APARTMENT INTERIOR PROJECT

*"The execution and design by **ittige interiors** were flawless, turning our vision into reality with precision and creativity. Every detail was thoughtfully handled, resulting in a space that is both functional and stunning."*

- Jyothi



VILLA INTERIOR PROJECT



"I couldn't be happier with the interior design of my home; every room feels both stylish and functional. The attention to detail and personalized touch made the space feel truly unique and comfortable."

- Subrat

KITCHEN DESIGNS



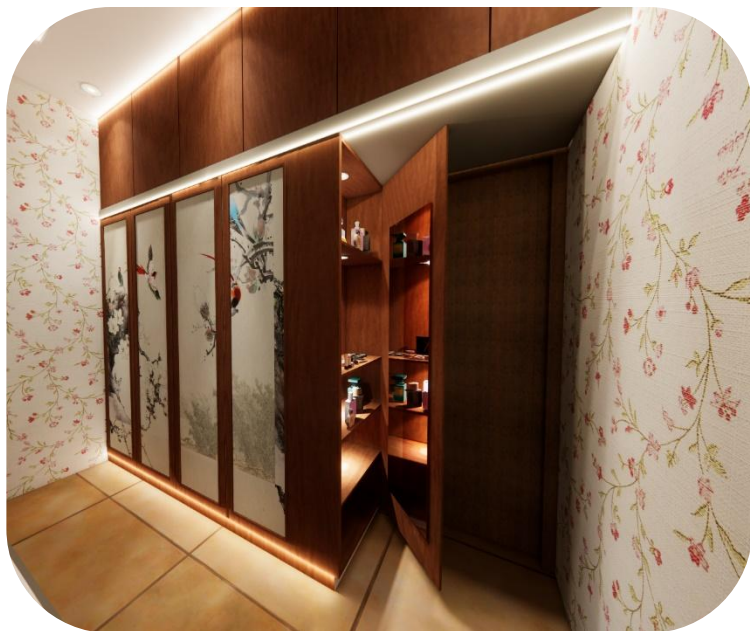
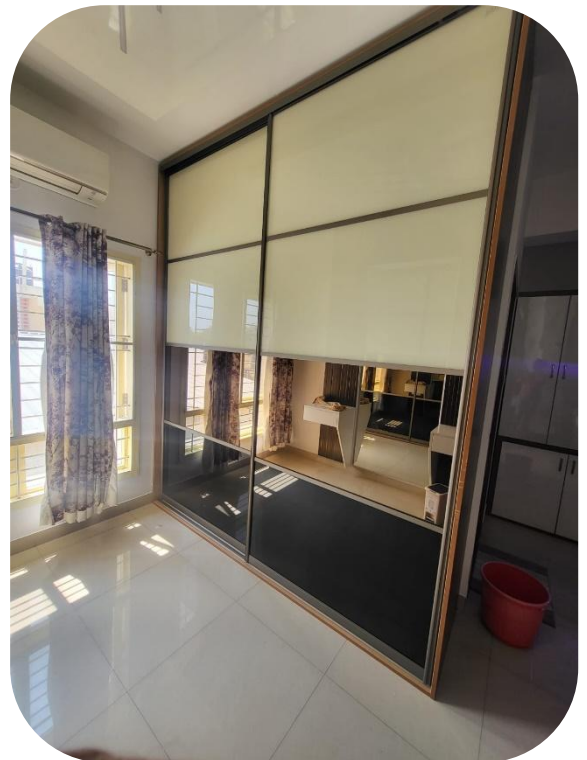
A well-designed kitchen enhances both functionality and aesthetics, making cooking and meal preparation more efficient and enjoyable. It also adds value to a home, creating a space that is both practical and visually appealing for daily use and entertaining.



WARDROBE DESIGNS



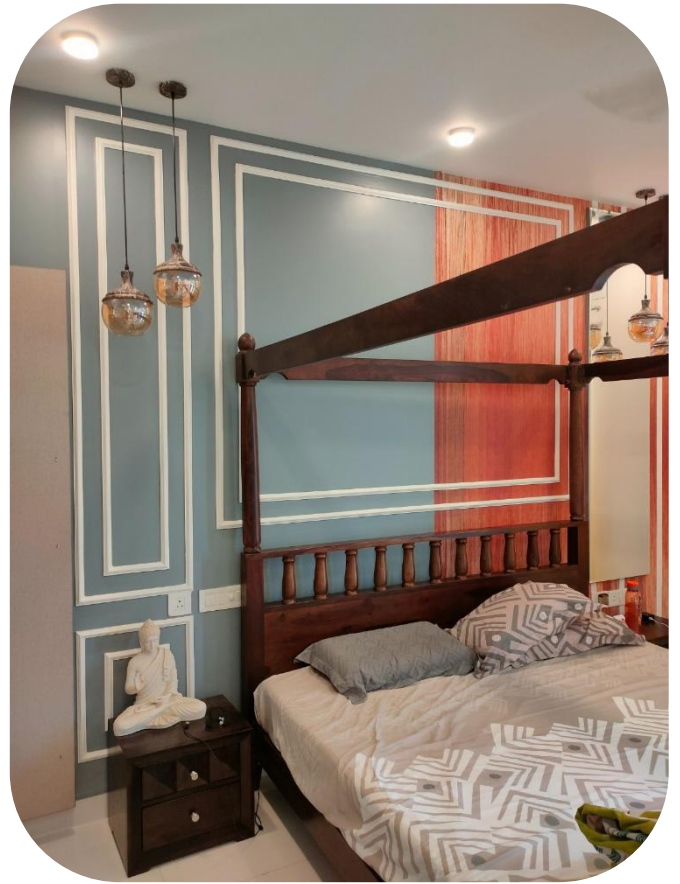
Wardrobes come in various types to suit different needs and spaces. Sliding wardrobes save space and offer a sleek look, hinged wardrobes provide classic functionality, and walk-in wardrobes add luxury with ample storage.



WARDROBE DESIGNS



HEAD BOARD DESIGNS



A well-designed headboard adds both style and functionality to your bedroom, serving as a focal point while providing support and comfort. It enhances the overall aesthetic of the space and can be customized to reflect your personal taste and needs.

Core Materials we use



PLYWOOD

BWP : Boiling water proof (IS 710 grade)

BWR :boiling water resistant

MR :moisture resistant (IS 303 grade)



MDF

Interior grade mdf
Interior grade prelam mdf



PARTICLE BOARD

Interior grade pb interior grade prelam

pb exterior grade pb

Exterior grade prelam pb



HDMR

High density high moisture
resident



WPC

Wood plastic composite

Surface treatment we offer



LAMINATE

Applicable core – BWP ply, BWR ply, MR ply, WPC, MDF

Finishes – Matt, Gloss, High gloss, Textured and Decorative



DUCO

Applicable core – MDF

Finishes – Matte/flat, Eggshell, Satin, Semigloss, and High-gloss/gloss



ACRYLIC

Applicable core – HDHMR

Finishes – Matt, Glossy, Textured



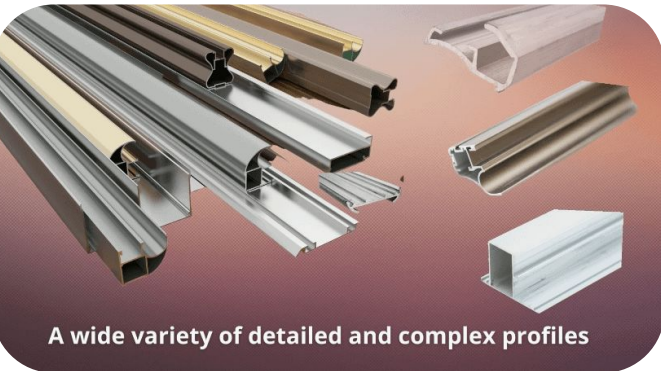
Surface treatment we offer



LACQUERED GLASS

Applicable core – with aluminum extrusions

Finishes – Matt, Glossy



ALUMINUM EXTRUSIONS

Applicable core – Acrylic, glass, fluted glass, etc

Finishes – Anodizing ,Powder coating, PVD



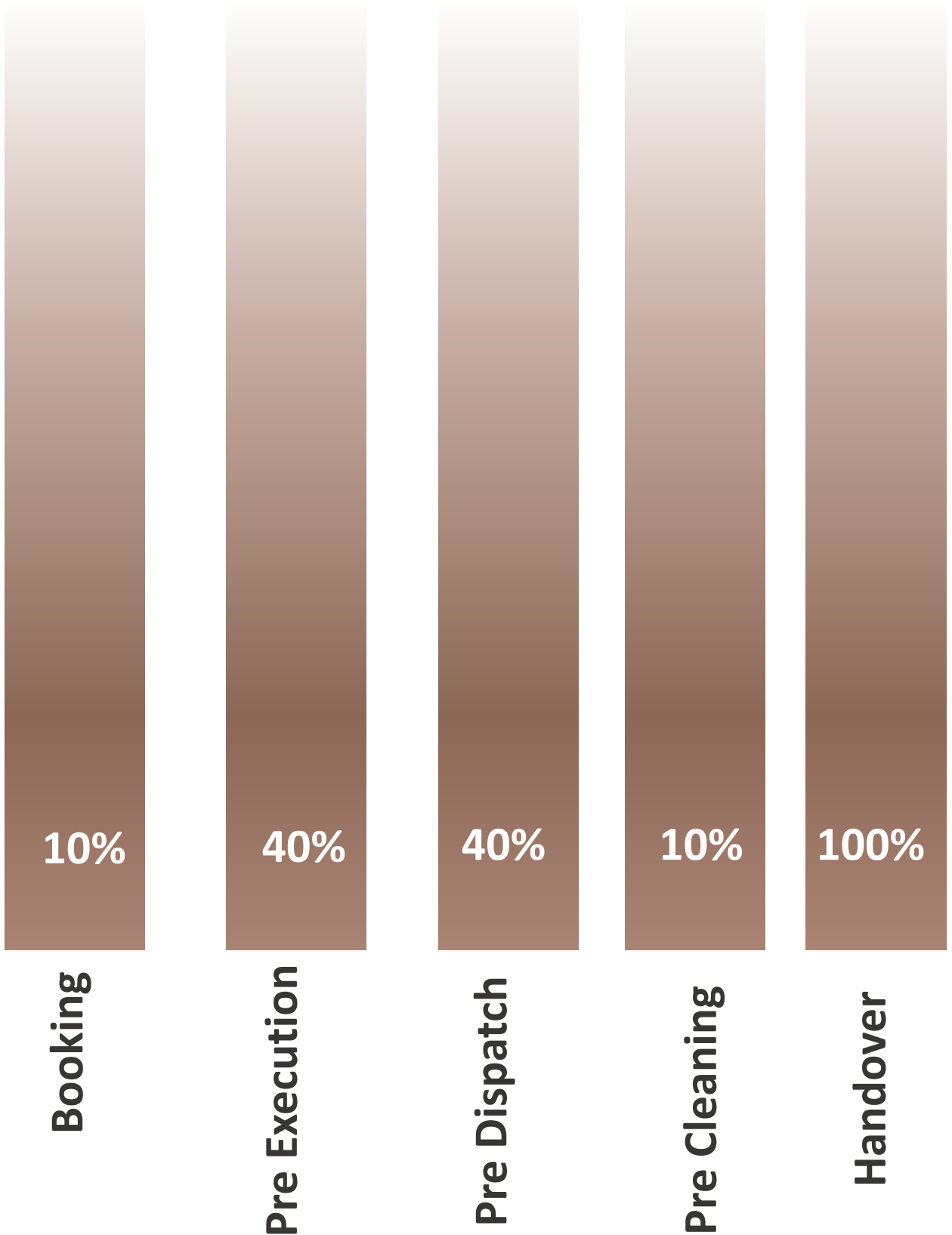
HARDWARES

Brands – Ebco/Hettich with 5 years of warranty

PAINTING

Brands – Asian paints (as per selection)

Payment Process



Our payments are broken into installment and reflective of the progress on site, for a better home interiors journey

Thanks !

Do you have any questions?

Call us @808867917



ittige

CREATING SPACES FOR BETTER LIVING

CONTACT US AT



+91-9108980431



info@ittige.co



www.ittige.co



#1065 C1, 3rd Cross, 9th Main,
Vijay Bank Layout
Bangalore - 560 076



ittige

Creating spaces for better living

Surface treatment we offer

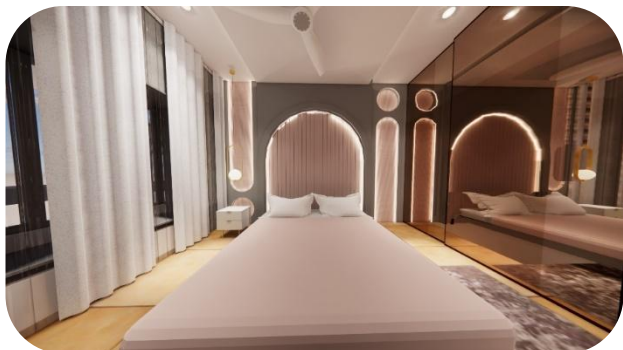
Our services

Our numbers

BEDROOM DESIGNS



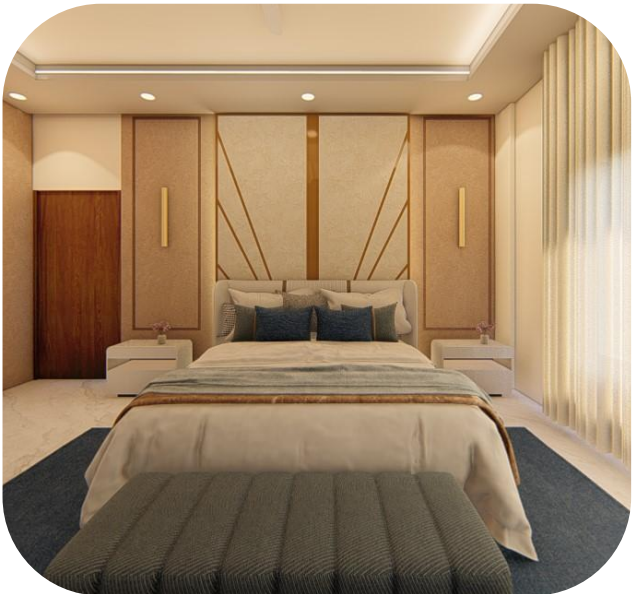








HEADBOARD DESIGNS



Color wheel



RYB color model

Earth Signs

- **Taurus (April 20 – May 20): Rustic Elegance** – Natural tones, luxurious textures, and earthy elements that exude comfort and sophistication.
- **Virgo (August 23 – September 22): Modern Minimalism** – Clean, organized, and functional spaces with subtle elegance and attention to detail.
- **Capricorn (December 22 – January 19): Classic Traditional** – Timeless designs with rich wood tones, quality craftsmanship, and a focus on durability.

Fire Signs

- **Aries (March 21 – April 19): Contemporary Bold** – Vibrant colors, dynamic layouts, and statement-making furniture for an energetic vibe.
- **Leo (July 23 – August 22): Hollywood Glam** – Dramatic and glamorous interiors with metallic accents, luxurious fabrics, and bold patterns.
- **Sagittarius (November 22 – December 21): Global Eclectic** – Adventurous themes with cultural influences, rich textures, and unique decor from around the world.

Air Signs

- **Gemini (May 21 – June 20): Playful Eclectic** – A mix of styles, vibrant accents, and versatile designs that reflect creativity and adaptability.
- **Libra (September 23 – October 22): Elegant Harmony** – Balanced interiors with soft colors, symmetrical layouts, and refined details.
- **Aquarius (January 20 – February 18): Futuristic Modern** – Unconventional designs with creative touches, innovative furniture, and sleek aesthetics.

Water Signs

- **Cancer (June 21 – July 22): Coastal Comfort** – Cozy, nurturing spaces with light colors, soft textures, and a calming seaside vibe.
- **Scorpio (October 23 – November 21): Moody Luxe** – Intense, bold interiors with dark tones, rich textures, and dramatic contrasts.
- **Pisces (February 19 – March 20): Serene Boho** – Dreamy, calming designs inspired by nature, with soft hues, flowing fabrics, and artistic details.

These themes align with the personality traits of each sign while offering unique design inspiration.

Color Psychology in Interior Design

Colors significantly influence emotions, moods, and perceptions. Here's a breakdown of colors and their psychological effects in design:

- **Red:** Stimulates energy, passion, and excitement.
 - *Example:* A bold red accent wall in a dining room to encourage lively conversations.
 - *Fashion Link:* People who wear red often like statement pieces in their wardrobe.
- **Blue:** Evokes calmness, trust, and serenity.
 - *Example:* Soft blue tones in bedrooms for relaxation.
 - *Fashion Link:* Fans of denim and blues may prefer cool, tranquil shades.
- **Yellow:** Represents happiness, optimism, and creativity.
 - *Example:* Bright yellow kitchen accents to create a cheerful cooking space.
 - *Fashion Link:* Those who wear yellow often like quirky, playful interiors.
- **Green:** Associated with nature, balance, and rejuvenation.
 - *Example:* Olive green walls in living rooms for a grounding, earthy feel.
 - *Fashion Link:* Nature-inspired individuals may love biophilic design elements.
- **Black:** Signifies sophistication, power, and elegance.
 - *Example:* Matte black fixtures in modern bathrooms for a sleek look.
 - *Fashion Link:* Fans of monochrome wardrobes often prefer minimalist interiors.
- **White:** Symbolizes purity, simplicity, and spaciousness.
 - *Example:* White Scandinavian interiors for a clean, airy feel.
 - *Fashion Link:* Minimalist dressers often favor neutral palettes.
- **Purple:** Conveys luxury, creativity, and mystery.
 - *Example:* Deep purple velvet sofas in a luxurious lounge.
 - *Fashion Link:* Lovers of regal fashion might lean toward opulent colors.
- **Orange:** Radiates warmth, enthusiasm, and energy.
 - *Example:* Terracotta tones in Mediterranean-style interiors.
 - *Fashion Link:* Adventurous dressers might enjoy bold, eclectic spaces.
- **Pink:** Reflects softness, romance, and playfulness.
 - *Example:* Soft blush tones in nurseries or pastel pink in chic, feminine spaces.
 - *Fashion Link:* Romantic dressers may lean toward soft, whimsical colors.

Fashion Preferences and Interior Design

Fashion choices often mirror interior design preferences:

•Classic Fashion:

- Prefers timeless designs, neutral palettes, and quality materials.
- *Interior Style:* Traditional or transitional.

•Bohemian Fashion:

- Embraces vibrant patterns, layers, and textures.
- *Interior Style:* Eclectic or bohemian.

•Minimalist Fashion:

- Loves clean lines, monochromes, and simplicity.
- *Interior Style:* Scandinavian or modern minimalist.

•Glamorous Fashion:

- Opts for metallics, luxurious fabrics, and statement pieces.
- *Interior Style:* Hollywood glam or art deco.

•Athleisure Fashion:

- Combines comfort and function.
- *Interior Style:* Contemporary or industrial.

Astrology, Feng Shui, and Numerology in Design

•Feng Shui:

- Aims to harmonize energy (Chi) in spaces.
- *Example:* Place a water element in the wealth corner to attract prosperity.

•Numerology:

- Uses birth dates to determine lucky numbers and elements.
- *Example:* A person with the number 5 might prefer dynamic, energetic designs

Do you prefer bold statement pieces or subtle, cohesive designs?

Functional Needs

Do you need additional storage solutions?

Are there specific features you'd like to prioritize (e.g., lighting, acoustics)?

How much maintenance are you comfortable with for materials and finishes?

Cultural and Regional Influences

Are there any cultural or traditional elements you'd like incorporated?

Do you want your space to reflect the local environment or stand out from it?

Color Psychology

How do you want your space to make you feel (e.g., calm, energized, inspired)?

Do you associate any specific colors with positive memories or experiences?

Personality and Design Styles

Are you more drawn to clean, functional spaces or layered, artistic designs?

Do you value timeless designs, or are you open to experimenting with trends?

Do you prefer spaces that are cozy and intimate or sleek and expansive?

Inspirations and References

Are there any places, photos, or experiences that inspire your design preferences?

Do you have a favorite designer, brand, or style?

Fashion Preferences

How would you describe your personal fashion style (e.g., classic, edgy, bohemian)?

Do you prefer neutral tones, vibrant patterns, or a mix?

Social Media and Mood Boards

Have you saved any images or ideas on Pinterest, Instagram, or Houzz?

If so, can you share them with me for inspiration?

Feng Shui and Numerology

Are you familiar with Feng Shui principles? Would you like them incorporated?

Do you have any lucky numbers or elements you'd like to reflect in the design?

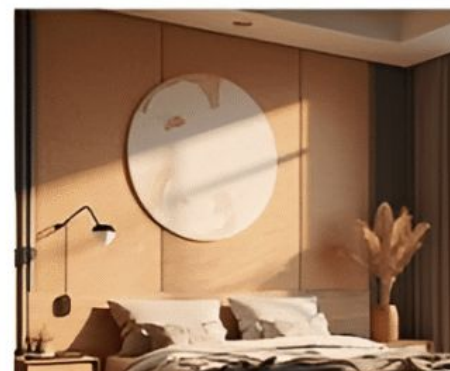
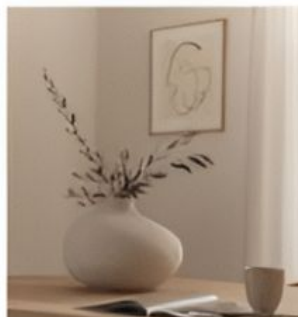
shades of a single color, creating a cohesive and soothing space.
opposite each other on the color wheel, producing a bold and contrasting effect.
each other on the color wheel, creating a harmonious and smooth transition.
gray, beige, and taupe, providing a calm and versatile background.
s of brown, green, and blue, reminiscent of nature and creating a cozy atmosphere.
colors like red, yellow, and orange, adding energy and playfulness to a room.
e pink, blue, and mint, creating a soft and calming ambiance.
metal, and concrete, giving a raw and edgy feel.
l sandy neutrals, evoking the freshness and serenity of the ocean.
ld, rich colors like turquoise, avocado, and harvest gold, characteristic of the mid-century modern era.
ed colors like black, white, and gray, emphasizing clean lines and simplicity.
tic colors and patterns, creating a lively and global-inspired space.

clean lines, minimal ornamentation, and an emphasis on function.
ss designs often featuring ornate details and rich textures.
s with exposed wood, stone, and earthy colors.
metal, and reclaimed wood, giving a raw, urban feel.
ro-inspired designs with bold colors, organic shapes, and minimal ornamentation.
with blues, whites, and natural textures, evoking the beach.
c spaces with global-inspired patterns, colors, and textures.
y-style designs with vintage elements, natural materials, and warm colors.
orous, luxurious spaces with bold colors, metallic accents, and ornate details.
attered spaces with a limited color palette and clean lines.
ous designs with geometric patterns, metallic accents, and bold colors.
ne spaces with pastel colors, vintage elements, and distressed finishes.
rful designs inspired by Native American and Spanish influences.
aces with bright colors, natural textures, and exotic patterns.
nctional designs with minimal ornamentation, natural materials, and a neutral color palette.
ting point, and you can always mix and match elements to create a unique style.

6 principles of japandi style

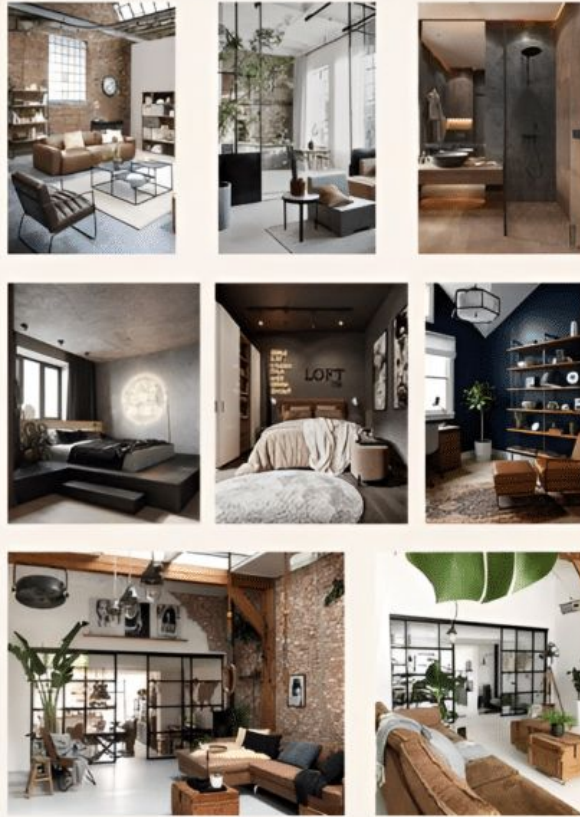
- Incorporate Natural Materials & Textures
- Utilize a Neutral Color Palette
- Bring The Outdoor Inside – natural light
- Display Symbolic Décor
- Incorporate minimalist furniture
- Feature Washi Paper And Room Dividers

JAPANDI moodboard



INDUSTRIAL

interior design style



ESTILO
LOFT
PAREDES AL
DESNUDO

ESPACIOS
ABIERTOS

MASCULINIDAD
MATERIALES
CONSTRUCTIVOS



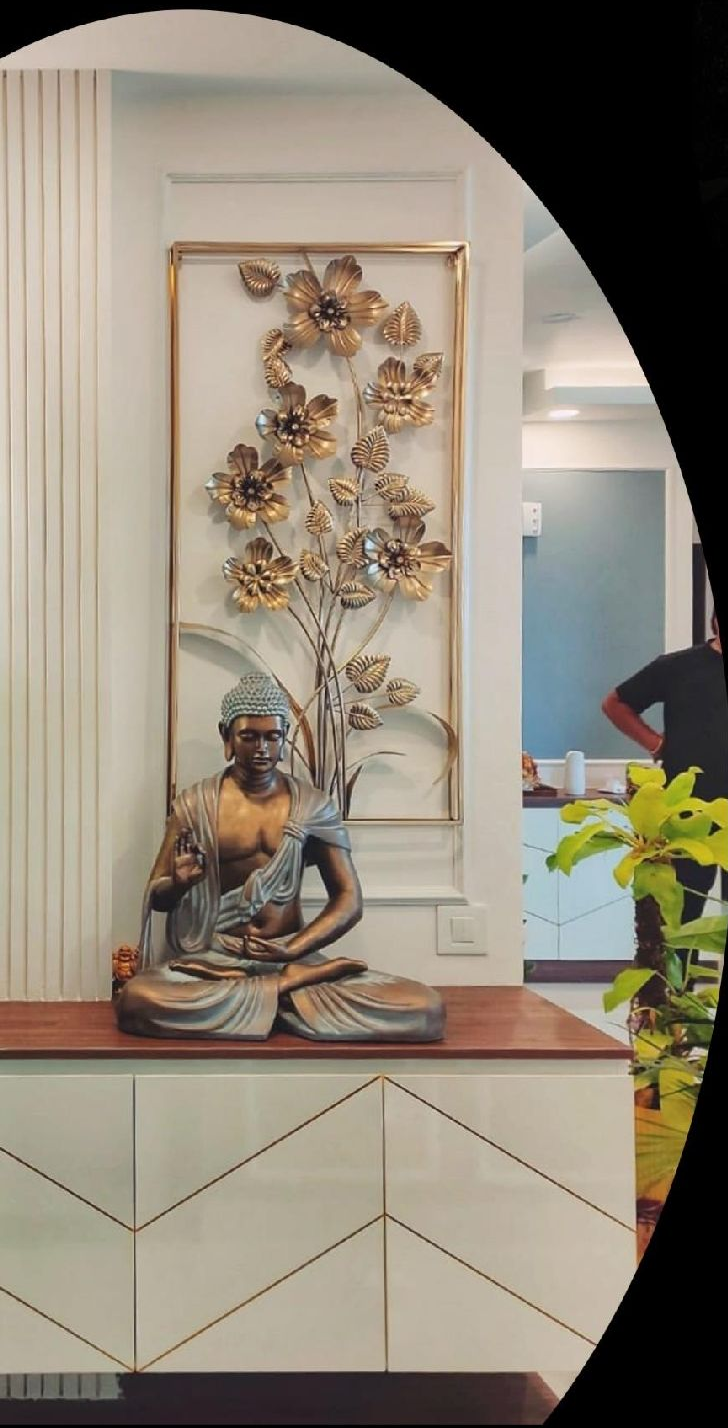
EIRE
INTERIORS

"Inspired by Van Gogh's belief that 'Great things are done by a series of small things brought together,' we embrace the idea that each brick is a unique contributor to our collective growth.



"Ittige," derived from the Kannada word "BRICK," represents our unwavering commitment to our customers who have been a part of this vision.

Just as each brushstroke adds depth and beauty to a painting, we recognize that every aspect of our work matters.



From the initial conceptualization to the final execution, we diligently focus on the finer elements that will ultimately shape the outcome.

We leave no stone unturned, ensuring that no detail is overlooked and that every small component contributes to the overall success of the project.

We invite you to partner with us!



Let's bring our collective strengths and visions together, building a remarkable reality step by step, brick by brick, transforming our shared dream into a remarkable reality.



About us



Our evolution has been organic, transforming from a founder-led initiative into a close-knit family.

Our team comprises experts in design, execution, and coordination, collectively possessing over 10 years of experience.

We leverage our diverse perspectives to uncover unique insights and work closely with our trusted network of vendors to ensure exceptional quality and seamless processes.

Operations Head
Structural engineer



Lead Architect



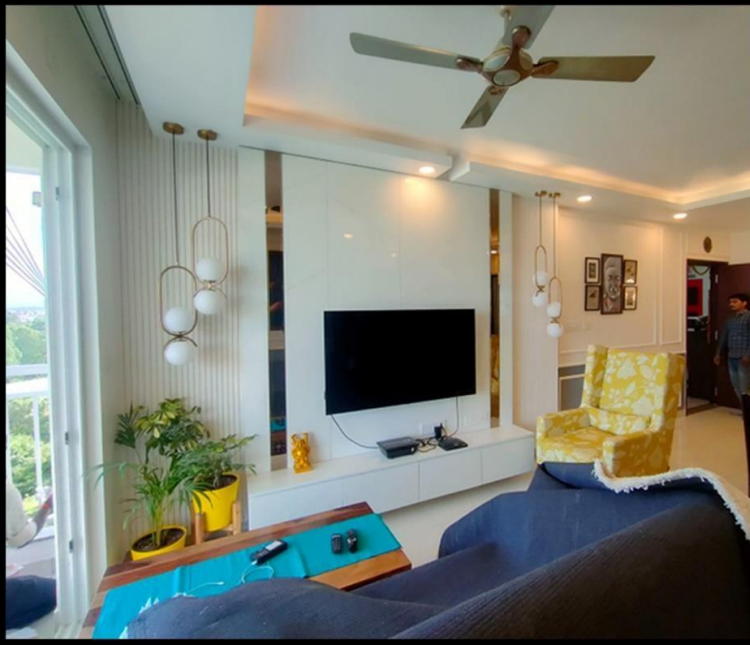
Marketing Head
Civil engineer



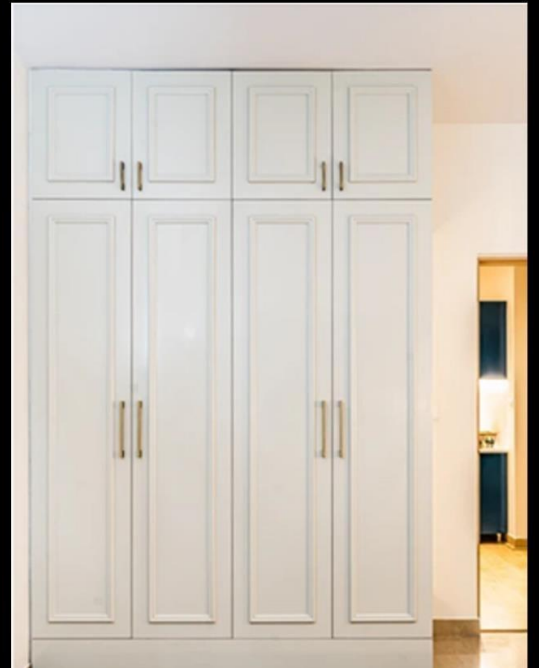
Few of Our Works...



Elevating Every Inch, Crafting Design Brilliance

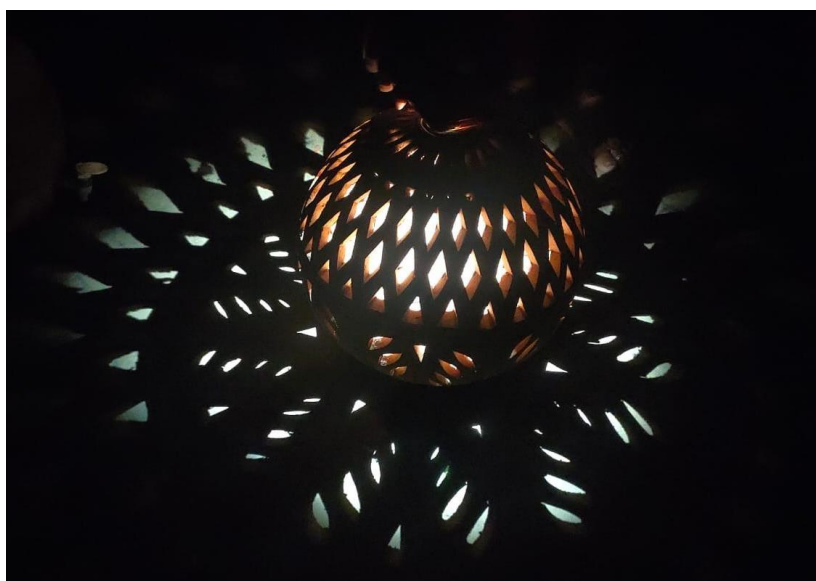
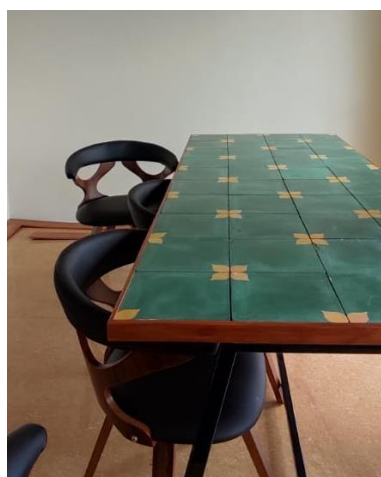


Few of Our Works...



From East to West, North to South, we've got your space covered. No corner untouched





Customized
Furniture,
Lights And
Many More
To Come....

We are a group of Architects and civil engineers building dreams into reality!



CONTACT US AT



+91-9108980431



info@ittige.co



www.ittige.co



#1065 C1, 3rd Cross, 9th Main,
Vijay Bank Layout
Bangalore - 560 076



ittige

Creating spaces for better living