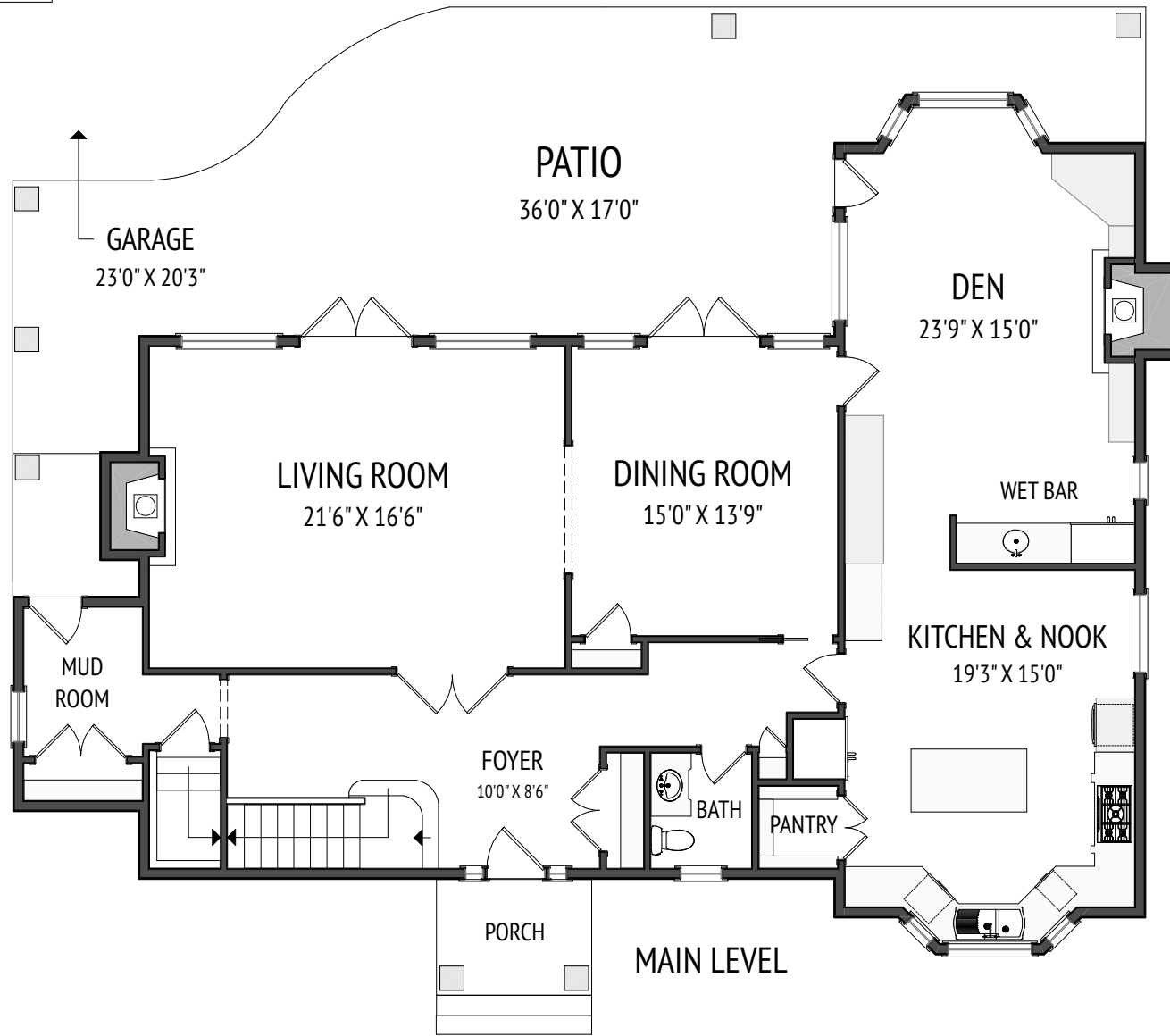


603 CRESCENT BLVD SW, CALGARY  
MAIN - 1752.26 Sq.ft. / 162.78 m2  
UPPER - 1549.85 Sq.ft. / 143.98 m2  
RMS TOTAL - 3302.11 Sq.ft. / 306.76 m2  
BASEMENT - 1763.26 Sq.ft. / 163.80 m2  
\*DEVELOPED AREA - 1351.91 Sq.ft. / 125.59 m2

DETACHED SINGLE FAMILY  
\*RECA RMS MEASUREMENTS TAKEN TO EXTERIOR  
FOUNDATION

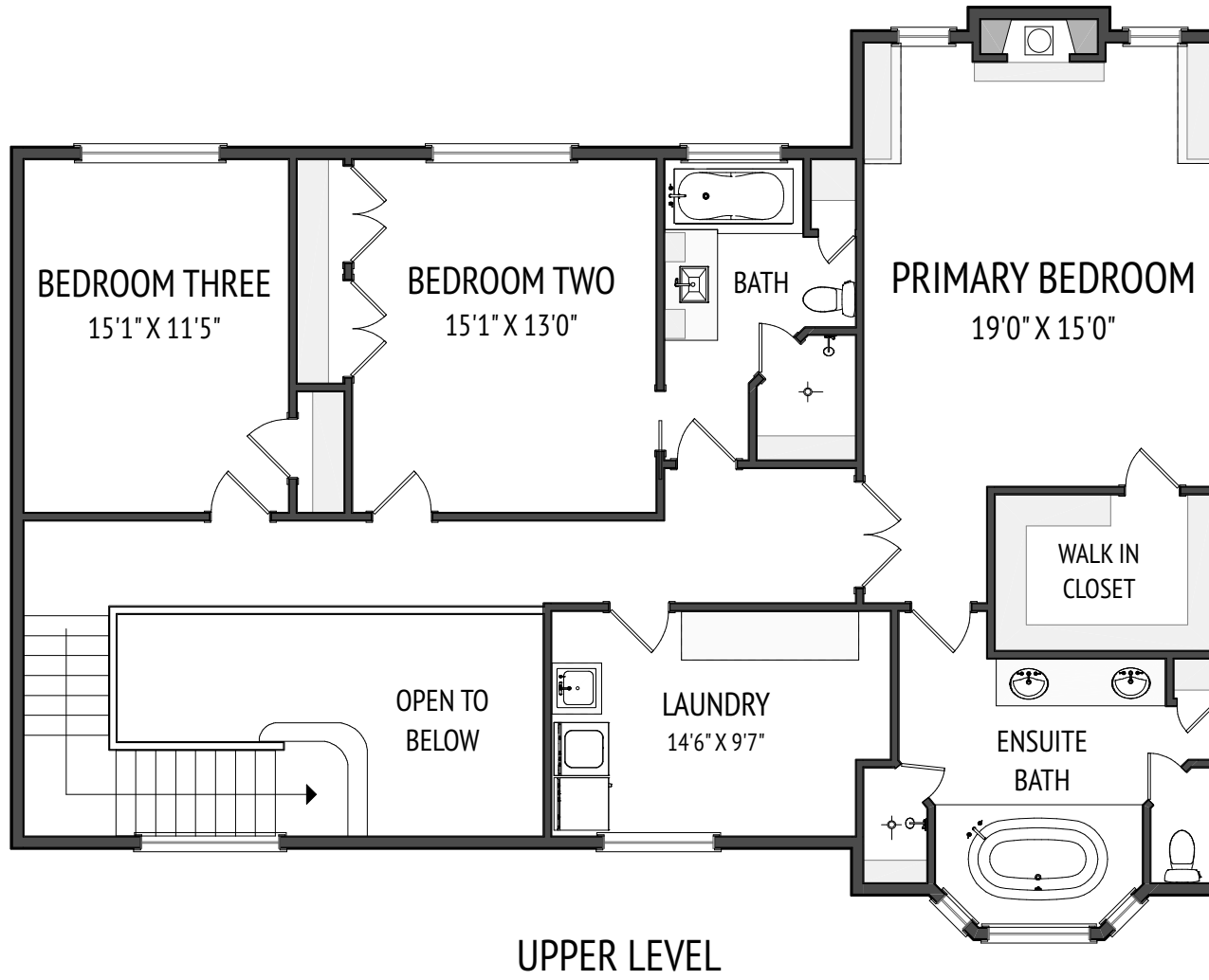
JOHN MCNEILL  
CENTURY 21 BAMBER REALTY LTD.  
JOHN@CALGARYURBANHOMES.COM  
403.807.1961  
MAY 24, 2023



603 CRESCENT BLVD SW, CALGARY  
MAIN - 1752.26 Sq.ft. / 162.78 m2  
UPPER - 1549.85 Sq.ft. / 143.98 m2  
RMS TOTAL - 3302.11 Sq.ft. / 306.76 m2  
BASEMENT - 1763.26 Sq.ft. / 163.80 m2  
\*DEVELOPED AREA - 1351.91 Sq.ft. / 125.59 m2

DETACHED SINGLE FAMILY  
\*RECA RMS MEASUREMENTS TAKEN TO EXTERIOR  
FOUNDATION

JOHN MCNEILL  
CENTURY 21 BAMBER REALTY LTD.  
JOHN@CALGARYURBANHOMES.COM  
403.807.1961  
MAY 24, 2023



603 CRESCENT BLVD SW, CALGARY  
MAIN - 1752.26 Sq.ft. / 162.78 m2  
UPPER - 1549.85 Sq.ft. / 143.98 m2  
RMS TOTAL - 3302.11 Sq.ft. / 306.76 m2  
BASEMENT - 1763.26 Sq.ft. / 163.80 m2  
\*DEVELOPED AREA - 1351.91 Sq.ft. / 125.59 m2

DETACHED SINGLE FAMILY  
\*RECA RMS MEASUREMENTS TAKEN TO EXTERIOR  
FOUNDATION

JOHN MCNEILL  
CENTURY 21 BAMBER REALTY LTD.  
JOHN@CALGARYURBANHOMES.COM  
403.807.1961  
MAY 24, 2023

