

Lifter

Sample ID: 2009KCA0346.1001

Cultivar: N/A

Matrix: Plant

Type: Flower - Wet

Sample Size:

Received: 09/17/2020

Completed: 09/22/2020

Batch#: N/A



Summary

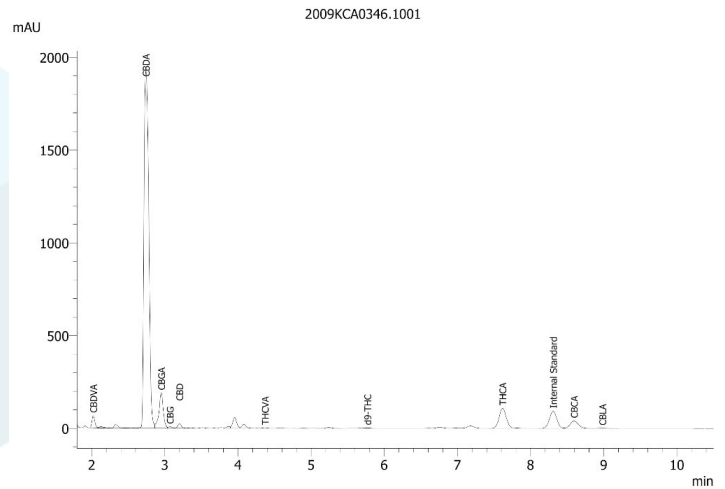
Test	Date Tested	Result
Cannabinoids	09/22/2020	Complete
Moisture	09/22/2020	9.9% - Complete

Cannabinoids by HPLC-PDA

Complete

0.65968%	16.25428%	20.99214%	9.9% Complete	Not Tested
Total THC	Total CBD	Total Cannabinoids	Moisture Content	Foreign Matter

Analyte	LOD	LOQ	Result	Result
	%	%	%	mg/g
CBC	0.00095	0.00280	ND	ND
CBCA	0.00181	0.00540	0.77812	7.7812
CBCV	0.00060	0.00180	ND	ND
CBD	0.00081	0.00240	0.09077	0.9077
CBDA	0.00043	0.00130	18.43047	184.3047
CBDV	0.00061	0.00180	ND	ND
CBDVA	0.00021	0.00060	0.15738	1.5738
CBG	0.00057	0.00170	0.03109	0.3109
CBGA	0.00049	0.00150	0.72548	7.2548
CBL	0.00112	0.00330	ND	ND
CBLA	0.00124	0.00370	0.01572	0.1572
CBN	0.00056	0.00170	ND	ND
CBNA	0.00060	0.00180	ND	ND
Δ8-THC	0.00104	0.00310	ND	ND
Δ9-THC	0.00076	0.00230	0.01320	0.1320
THCA	0.00084	0.00250	0.73716	7.3716
THCV	0.00069	0.00210	ND	ND
THCVA	0.00062	0.00190	0.01276	0.1276
Total THC			0.65968	6.5968
Total CBD			16.25428	162.5428
Total			20.99214	209.9214



Total THC = THCA * 0.877 + Δ9-THC

Total CBD = CBDA * 0.877 + CBD

LOD = Limit of Detection

LOQ = Limit of Quantitation

ND = None Detected

For plant material, the reported result is based on a sample weight with the applicable moisture content for that sample.




Heidi Sayre
Scientist
09/22/2020