

# SOUR SPACE CANDY

## Therapeutic Effects

**CBD** Analgesic, anti-inflammatory, antiemetic, anticonvulsant, anxiolytic, antioxidant

**CBG** Healing, antifungal, antibacterial, cell-regenerative, skin protectant, antidepressant

**CBC** Activates cannabinoid receptors and enhances the effects of other cannabinoids.

## Botanical Source

This product is derived from Industrial Hemp, grown and processed in the United States, in full compliance with the 2018 U.S. Farm Bill and applicable State Laws and State Departments of Agriculture regulations.



## Additional Information

The values exposed below are representative of multiple batches tested. A batch specific Certificate of Analysis (COA) shall be issued with each delivery of product and may vary slightly from the values listed below. Upon request, a complete analysis can be issued to include all data below, microbiological content, heavy metal content, nutritional values, cannabinoid compliance & potency, and other relevant qualifying data specific to that product type.

| CANNABINOID ANALYSIS               |         |        |                |
|------------------------------------|---------|--------|----------------|
| CANNABINOID                        |         | METHOD | %/wt/wt        |
| Cannabidiolic Acid                 | CBDa    | HPLC   | 14.579%        |
| Cannabidiol                        | CBD     | HPLC   | 0.675%         |
| Cannabidivarin                     | CBDV    | HPLC   | N/D            |
| Tetrahydrocannabinolic Acid        | THCA    | HPLC   | 0.500%         |
| Δ-9-Tetrahydrocannabinol           | Δ-9-THC | HPLC   | 0.057%         |
| Cannabinol                         | CBN     | HPLC   | N/D            |
| Cannabichromene                    | CBC     | HPLC   | 0.061%         |
| <b>Δ-9-Tetrahydrocannabinol</b>    |         |        | <b>0.057%</b>  |
| <b>Total CBD ((CBDA*0.87)+CBD)</b> |         |        | <b>13.461%</b> |

| TERPENE ANALYSIS   |         |                    |
|--------------------|---------|--------------------|
| ANALYTE            | LOQ (%) | RESULTS (% Weight) |
| Alpha-Humulene     | 0.0067% | 0.093%             |
| Alpha-Pinene       | 0.0067% | 0.144%             |
| Alpha-Terpinene    | 0.0067% | <LOQ               |
| Alpha-Bisabolol    | 0.0067% | 0.104%             |
| Beta-Caryophyllene | 0.0067% | 0.282%             |
| Beta-Myrcene       | 0.0067% | 0.655%             |
| Beta-Pinene        | 0.0067% | <LOQ               |
| Beta-Ocimene       | 0.0067% | 0.140%             |
| Camphene           | 0.0067% | <LOQ               |
| Delta-3-Carene     | 0.0067% | <LOQ               |
| D-Limonene         | 0.0067% | 0.049%             |
| Gamma-Terpinene    | 0.0067% | <LOQ               |
| Isopulegol         | 0.0067% | <LOQ               |
| Linalool           | 0.0067% | 0.051%             |
| Ocimene            | 0.0067% | 0.140%             |
| P-Cymene           | 0.0067% | <LOQ               |
| Terpinolene        | 0.0067% | 0.257%             |
| Neralidol          | 0.0067% | <LOQ               |

| QUALITATIVE ANALYSIS |                          |              |
|----------------------|--------------------------|--------------|
| OBSERVATION          | METHOD                   | RESULT       |
| Foreign Matter       | Gross Visual/Microscopic | Absent       |
| Color                | Gross Visual/Microscopic | Green/Orange |
| Molds & Mildews      | Gross Visual/Microscopic | Absent       |
| Smell                | Gross Visual/Microscopic | Aromatic     |
| Product Feel         | Gross Visual/Microscopic | Flowery      |



| SIGNIFICANT TERPENE PROFILE |  |
|-----------------------------|--|
| Beta-Myrcene                | Anti-inflammatory, analgesic, antibiotic, sedative, antimutagenic                      |
| Beta-Ocimene                | Antiviral, antifungal, antiseptic, decongestant, antibacterial                         |
| Alpha-Pinene                | Anti-inflammatory, bronchodilator, promotes alertness, mitigates schizophrenic effects |
| Beta-Caryophyllene          | Anxiety suppressor, ulcer preventer, stress reliever                                   |
| d-Limonene                  | Mood elevator, antifungal, antibacterial, absorption improvements, stress reliever     |
| Beta-Pinene                 | Anti-inflammatory, bronchodilator, promotes alertness, mitigates schizophrenic effects |
| Alpha-Humulene              | Potent anti-inflammatory   |
| Linalool                    | Anti-anxiety, antidepressant, sedative, anti-inflammatory, anti-epileptic, analgesic   |





# CERTIFICATE OF ANALYSIS

## ISO/IEC 17025:2017 ACCREDITATION #103104



Order #: 41329  
 Order Name: Sour Space Candy  
 Batch#: EXDI.11.12.19  
 Received: 11/12/2019  
 Completed: 11/14/2019

### Sample



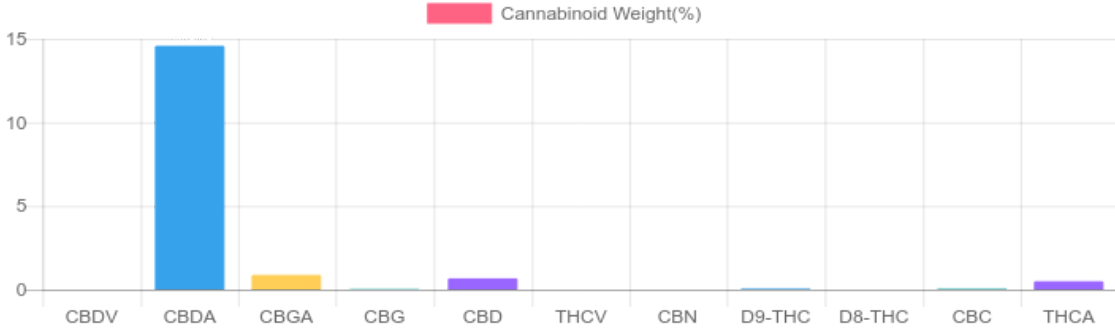
**0.057%**  
D9-THC

**13.461%**  
Total CBD

### Cannabinoids Test

SHIMADZU INTEGRATED UPLC-PDA  
 GSL SOP 400      PREPARED: 11/12/2019 17:56:33      UPLOADED: 11/13/2019 07:27:17

| Cannabinoids       | LOQ    | weight(%) | mg/g    |
|--------------------|--------|-----------|---------|
| D9-THC             | 10 PPM | 0.057%    | 0.574   |
| THCA               | 10 PPM | 0.500%    | 5.000   |
| CBD                | 10 PPM | 0.675%    | 6.750   |
| CBDA               | 20 PPM | 14.579%   | 145.795 |
| CBDV               | 20 PPM | N/D       | N/D     |
| CBC                | 10 PPM | 0.061%    | 0.610   |
| CBN                | 10 PPM | N/D       | N/D     |
| CBG                | 10 PPM | 0.027%    | 0.269   |
| CBGA               | 20 PPM | 0.884%    | 8.837   |
| D8-THC             | 10 PPM | N/D       | N/D     |
| THCV               | 10 PPM | N/D       | N/D     |
| TOTAL D9-THC       |        | 0.057%    | 0.057%  |
| TOTAL CBD*         |        | 13.461%   | 134.612 |
| TOTAL CANNABINOIDS |        | 16.783%   | 167.835 |



Reporting Limit 10 ppm  
 \*Total CBD = CBD + CBDA x 0.877  
 N/D - Not Detected, B/LOQ - Below Limit of Quantification



4001 SW 47th Avenue Suite 208  
 Davie, FL 33314  
 1-833-TEST-CBD  
 info@greenscientificlabs.com



*Andrew Hall*  
 Dr. Andrew Hall, Ph.D., CSO & Lab Director

Green Scientific Labs uses its best efforts to deliver high quality results and to verify that the data contained therein are based on sound scientific judgment and levels listed are guidelines only and all data was reported based on standard laboratory procedures and deviations. However Green Scientific Labs makes no warranties or claims to that effect and further shall not be liable for any damage or misrepresentation that may result from the use or misuse of the data contained herein in any way. Further, Green Scientific Labs makes no claims regarding representations of the analyzed sample to the larger batch from which it was taken. Data and information in this report are intended solely for the individual(s) for whom samples were submitted and as part of our strict confidentiality policy, Green Scientific Labs can only discuss results with the original client of record.

# CERTIFICATE OF ANALYSIS

## ISO/IEC 17025:2017 ACCREDITATION #103104



Order #: 41329  
 Order Name: Sour Space  
 Candy  
 Batch#: EXDI.11.12.19  
 Received: 11/12/2019  
 Completed: 11/14/2019

### TERPENES: TOTAL (1.871%)

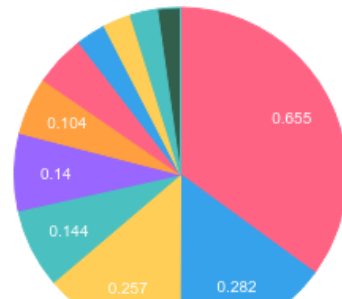
Headspace GCMS - Shimadzu GCMS QP2020 with HS20

GSL SOP 404  
 Prepared: 11/12/2019 16:54:17  
 Uploaded: 11/14/2019 07:50:43

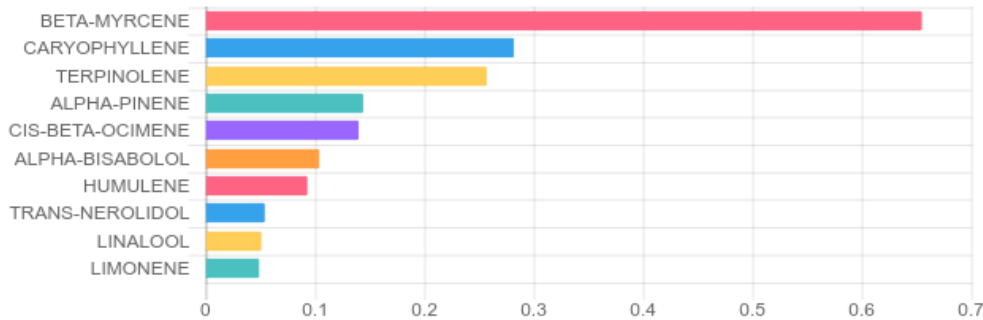
| Terpene            | Results (%) | LOQ (%) | LOD (%) |
|--------------------|-------------|---------|---------|
| 3-CARENE           | B/LOQ       | 0.0067% | 0.0063% |
| ALPHA-BISABOLOL    | 0.104%      | 0.0067% | 0.0063% |
| ALPHA-PINENE       | 0.144%      | 0.0067% | 0.0063% |
| ALPHA-TERPINENE    | B/LOQ       | 0.0067% | 0.0063% |
| BETA-MYRCENE       | 0.655%      | 0.0067% | 0.0063% |
| CARYOPHYLLENE      | 0.282%      | 0.0067% | 0.0063% |
| CIS-BETA-OCIMENE   | 0.140%      | 0.0067% | 0.0031% |
| GAMMA-TERPINENE    | B/LOQ       | 0.0067% | 0.0016% |
| GUAJOL             | 0.019%      | 0.0067% | 0.0063% |
| HUMULENE           | 0.093%      | 0.0067% | 0.0063% |
| LIMONENE           | 0.049%      | 0.0067% | 0.0063% |
| LINALOOL           | 0.051%      | 0.0067% | 0.0063% |
| TERPINOLENE        | 0.257%      | 0.0067% | 0.0063% |
| TRANS-BETA-OCIMENE | 0.015%      | 0.0067% | 0.0031% |

| Terpene         | Results (%) | LOQ (%) | LOD (%) |
|-----------------|-------------|---------|---------|
| TRANS-NEROLIDOL | 0.054%      | 0.0067% | 0.0063% |

### Terpenes Breakdown



### Top Terpenes Results:



### Tested for but not present:

CAMPHENE, BETA-PINENE, P-CYME, EUCALYPTOL, ISOPULEGOL, GERANIOL, CIS-NEROLIDOL, CARYOPHYLLENE OXIDE



4001 SW 47th Avenue Suite 208  
 Davie, FL 33314  
 1-833-TEST-CBD  
 info@greenscientificlabs.com



*Dr. Andrew Hall*  
 Dr. Andrew Hall, Ph.D., CSO & Lab Director

Green Scientific Labs uses its best efforts to deliver high quality results and to verify that the data contained therein are based on sound scientific judgment and levels listed are guidelines only and all data was reported based on standard laboratory procedures and deviations. However Green Scientific Labs makes no warranties or claims to that effect and further shall not be liable for any damage or misrepresentation that may result from the use or misuse of the data contained herein in any way. Further, Green Scientific Labs makes no claims regarding representations of the analyzed sample to the larger batch from which it was taken. Data and information in this report are intended solely for the individual(s) for whom samples were submitted and as part of our strict confidentiality policy, Green Scientific Labs can only discuss results with the original client of record.

# CERTIFICATE OF ANALYSIS

## ISO/IEC 17025:2017 ACCREDITATION #103104



Order #: 41329  
 Order Name: Sour Space  
 Candy  
 Batch#: EXDI.11.12.19  
 Received: 11/12/2019  
 Completed: 11/14/2019



### PESTICIDE ANALYSIS:

GSL SOP 401

PREPARED: 11/12/2019 17:46:48

UPLOADED: 11/13/2019 19:02:44

LCMS-MS - Shimadzu LCMS-8060

| Pesticide           | Action Level (ppm) | Results (ppm) | LOQ (ppm) | LOD (ppm) | Pesticide       | Action Level (ppm) | Results (ppm) | LOQ (ppm) | LOD (ppm) |
|---------------------|--------------------|---------------|-----------|-----------|-----------------|--------------------|---------------|-----------|-----------|
| ABAMECTIN B1A       | 0.100              | N/D           | 0.005     | 0.001     | IMAZALIL        | 0.100              | N/D           | 0.005     | 0.001     |
| ACEPHATE            | 0.100              | N/D           | 0.001     | 0.001     | IMIDACLOPRID    | 5.000              | N/D           | 0.005     | 0.001     |
| ACEQUINOCYL         | 0.100              | N/D           | 0.001     | 0.001     | KRESOXIM-METHYL | 0.100              | N/D           | 0.010     | 0.005     |
| ACETAMIPRID         | 0.100              | N/D           | 0.005     | 0.001     | MALATHION       | 0.500              | N/D           | 0.005     | 0.001     |
| ALDICARB            | 0.100              | N/D           | 0.005     | 0.001     | METALAXYL       | 2.000              | N/D           | 0.001     | 0.001     |
| AZOXYSTROBIN        | 0.100              | N/D           | 0.001     | 0.001     | METHIOCARB      | 0.100              | N/D           | 0.005     | 0.001     |
| BIFENAZATE          | 0.100              | N/D           | 0.005     | 0.001     | METHOMYL        | 1.000              | N/D           | 0.001     | 0.001     |
| BIFENTHRIN          | 3.000              | N/D           | 0.005     | 0.001     | MEVINPHOS       | 0.100              | N/D           | 0.001     | 0.001     |
| BOSCALID            | 0.100              | N/D           | 0.005     | 0.001     | MYCLOBUTANIL    | 0.100              | N/D           | 0.005     | 0.001     |
| CARBARYL            | 0.500              | N/D           | 0.003     | 0.001     | NALED           | 0.100              | N/D           | 0.005     | 0.001     |
| CARBOFURAN          | 0.100              | N/D           | 0.001     | 0.001     | OXAMYL          | 0.500              | N/D           | 0.001     | 0.001     |
| CHLORANTRANILIPROLE | 10.000             | N/D           | 0.005     | 0.005     | PACLOBUTRAZOL   | 0.100              | N/D           | 0.005     | 0.001     |
| CHLORPYRIFOS        | 0.100              | N/D           | 0.001     | 0.001     | PERMETHRINS     | 0.500              | N/D           | 0.005     | 0.001     |
| CLOFENTEZINE        | 0.100              | N/D           | 0.001     | 0.001     | PHOSMET         | 0.100              | N/D           | 0.005     | 0.001     |
| DAMINOZIDE          | 0.100              | N/D           | 0.005     | 0.001     | PIPERONYL       | 3.000              | N/D           | 0.001     | 0.001     |
| DIAZANON            | 0.100              | N/D           | 0.001     | 0.001     | BUTOXIDE        |                    |               |           |           |
| DICHLORVOS          | 0.100              | N/D           | 0.005     | 0.001     | PRALLETHRIN     | 0.100              | N/D           | 0.005     | 0.005     |
| DIMETHOATE          | 0.100              | N/D           | 0.001     | 0.001     | PROPICONAZOLE   | 0.100              | N/D           | 0.010     | 0.005     |
| DIMETHOMORPH        | 2.000              | N/D           | 0.005     | 0.001     | PROPOXUR        | 0.100              | N/D           | 0.001     | 0.001     |
| ETHOPROPHOS         | 0.100              | N/D           | 0.001     | 0.001     | PYRETHRINS      |                    |               |           |           |
| ETOFENPROX          | 0.100              | N/D           | 0.001     | 0.001     | (PYRETHRIN I)   | 0.500              | N/D           | 0.005     | 0.005     |
| ETOXAZOLE           | 0.100              | N/D           | 0.010     | 0.005     | PYRIDABEN       | 0.100              | N/D           | 0.005     | 0.001     |
| FENHEXAMID          | 0.100              | N/D           | 0.005     | 0.001     | SPINETORAM      | 0.100              | N/D           | 0.001     | 0.001     |
| FENOXYCARB          | 0.100              | N/D           | 0.005     | 0.001     | SPINOSAD        | 0.100              | N/D           | 0.001     | 0.001     |
| FENPYROXIMATE       | 0.100              | N/D           | 0.001     | 0.001     | SPIROMESIFEN    | 0.100              | N/D           | 0.005     | 0.001     |
| FIPRONIL            | 0.100              | N/D           | 0.003     | 0.001     | SPIROTETRAMAT   | 0.100              | N/D           | 0.001     | 0.001     |
| FLONICAMID          | 0.100              | N/D           | 0.025     | 0.010     | SPIROXAMINE     | 0.100              | N/D           | 0.001     | 0.001     |
| FLUDIOXONIL         | 0.100              | N/D           | 0.003     | 0.001     | TEBUCONAZOLE    | 0.100              | N/D           | 0.005     | 0.001     |
| HEXYTHIAZOX         | 0.100              | N/D           | 0.005     | 0.001     | THIACLOPRID     | 0.100              | N/D           | 0.001     | 0.001     |
|                     |                    |               |           |           | THIAMETHOXAM    | 5.000              | N/D           | 0.001     | 0.001     |
|                     |                    |               |           |           | TRIFLOXYSTROBIN | 0.100              | N/D           | 0.001     | 0.001     |

N/D = Not Detected, A/LOQ = Above LOQ Level, B/LOQ = Below LOQ Level, B/LOD = Below LOD Level



4001 SW 47th Avenue Suite 208  
 Davie, FL 33314  
 1-833-TEST-CBD  
 info@greenscientificlabs.com



*(Signature)*  
 Dr. Andrew Hall, Ph.D., CSO & Lab Director

Green Scientific Labs uses its best efforts to deliver high quality results and to verify that the data contained therein are based on sound scientific judgment and levels listed are guidelines only and all data was reported based on standard laboratory procedures and deviations. However Green Scientific Labs makes no warranties or claims to that effect and further shall not be liable for any damage or misrepresentation that may result from the use or misuse of the data contained herein in any way. Further, Green Scientific Labs makes no claims regarding representations of the analyzed sample to the larger batch from which it was taken. Data and information in this report are intended solely for the individual(s) for whom samples were submitted and as part of our strict confidentiality policy, Green Scientific Labs can only discuss results with the original client of record.

# CERTIFICATE OF ANALYSIS

## ISO/IEC 17025:2017 ACCREDITATION #103104



Order #: 41329  
Order Name: Sour Space  
Candy  
Batch#: EXDI.11.12.19  
Received: 11/12/2019  
Completed: 11/14/2019

### Mycotoxin Analysis:

LC-MS - Shimadzu LCMS-8060  
GSL SOP 401

Uploaded: 11/13/2019 19:02:43

| Analyte      | Action Lvl (ppb) | Results (ppb) |
|--------------|------------------|---------------|
| AFLATOXIN B1 | 20               | N/D           |
| AFLATOXIN B2 | 20               | N/D           |
| AFLATOXIN G1 | 20               | N/D           |
| AFLATOXIN G2 | 20               | N/D           |
| OCHRATOXIN A | 20               | N/D           |

LOQ is 4ppb, LOD is 1ppb

### Heavy Metals Analysis:

ICP-MS - Shimadzu ICPMS-2030  
GSL SOP 403

Uploaded: 11/12/2019 16:37:13

| Metal        | Action Level (ppb) | Result (ppb) |
|--------------|--------------------|--------------|
| ARSENIC (AS) | 200                | B/LOQ        |
| CADMIUM (CD) | 200                | B/LOQ        |
| MERCURY (HG) | 100                | B/LOQ        |
| LEAD (PB)    | 500                | B/LOQ        |

Lower Limit of Quantitation (LOQ) is 75 ppb



4001 SW 47th Avenue Suite 208  
Davie, FL 33314  
1-833-TEST-CBD  
info@greenscientificlabs.com



Dr. Andrew Hall, Ph.D., CSO & Lab Director

Green Scientific Labs uses its best efforts to deliver high quality results and to verify that the data contained therein are based on sound scientific judgment and levels listed are guidelines only and all data was reported based on standard laboratory procedures and deviations. However Green Scientific Labs makes no warranties or claims to that effect and further shall not be liable for any damage or misrepresentation that may result from the use or misuse of the data contained herein in any way. Further, Green Scientific Labs makes no claims regarding representations of the analyzed sample to the larger batch from which it was taken. Data and information in this report are intended solely for the individual(s) for whom samples were submitted and as part of our strict confidentiality policy, Green Scientific Labs can only discuss results with the original client of record.