

# CERTIFICATE OF ANALYSIS

## ISO/IEC 17025:2017 ACCREDITATION #103104



Order #: 39267  
 Order Name: Sour Space  
 Candy  
 Batch#: EXDI.10.21.19  
 Received: 10/21/2019  
 Completed: 10/23/2019

Exactus Inc.  
 80 NE 4th Ave. #28  
 Delray Beach FL, 33484  
 (914) 714-2750



### Sample



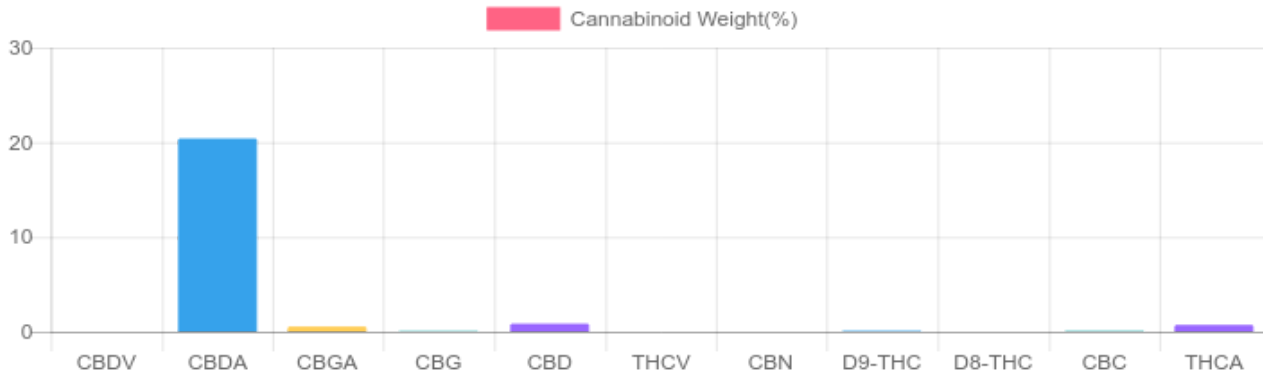
**0.077%**  
D9-THC

**18.727%**  
Total CBD

### Cannabinoids Test

SHIMADZU INTEGRATED UPLC-PDA  
 GSL SOP 400      PREPARED: 10/21/2019 14:55:30      UPLOADED: 10/22/2019 10:52:22

Cannabinoids	LOQ	weight(%)	mg/g
D9-THC	10 PPM	0.077%	0.770
THCA	10 PPM	0.692%	6.918
CBD	10 PPM	0.841%	8.407
CBDA	20 PPM	20.395%	203.948
CBDV	20 PPM	N/D	N/D
CBC	10 PPM	0.077%	0.771
CBN	10 PPM	N/D	N/D
CBG	10 PPM	0.050%	0.498
CBGA	20 PPM	0.526%	5.264
D8-THC	10 PPM	N/D	N/D
THCV	10 PPM	N/D	N/D
TOTAL D9-THC		0.077%	0.077%
TOTAL CBD*		18.727%	187.269
TOTAL CANNABINOIDS		22.658%	226.576



Reporting Limit 10 ppm  
 \*Total CBD = CBD + CBDA x 0.877  
 N/D - Not Detected, B/LOQ - Below Limit of Quantification



4001 SW 47th Avenue Suite 208  
 Davie, FL 33314  
 1-833-TEST-CBD  
 info@greenscientificlabs.com



Dr. Andrew Hall, Ph.D., CSO & Lab Director

Green Scientific Labs uses its best efforts to deliver high quality results and to verify that the data contained therein are based on sound scientific judgment and levels listed are guidelines only and all data was reported based on standard laboratory procedures and deviations. However Green Scientific Labs makes no warranties or claims to that effect and further shall not be liable for any damage or misrepresentation that may result from the use or misuse of the data contained herein in any way. Further, Green Scientific Labs makes no claims regarding representations of the analyzed sample to the larger batch from which it was taken. Data and information in this report are intended solely for the individual(s) for whom samples were submitted and as part of our strict confidentiality policy, Green Scientific Labs can only discuss results with the original client of record.

# CERTIFICATE OF ANALYSIS

## ISO/IEC 17025:2017 ACCREDITATION #103104



Order #: 39267  
 Order Name: Sour Space  
 Candy  
 Batch#: EXDI.10.21.19  
 Received: 10/21/2019  
 Completed: 10/23/2019

Exactus Inc.  
 80 NE 4th Ave. #28  
 Delray Beach FL, 33484  
 (914) 714-2750



### TERPENES: TOTAL (1.649%)

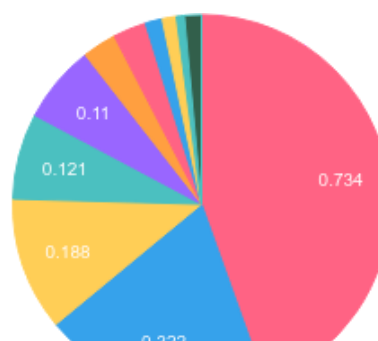
Headspace GCMS - Shimadzu GCMS QP2020 with HS20

GSL SOP 404  
 Prepared: 10/21/2019 17:22:50  
 Uploaded: 10/22/2019 19:18:42

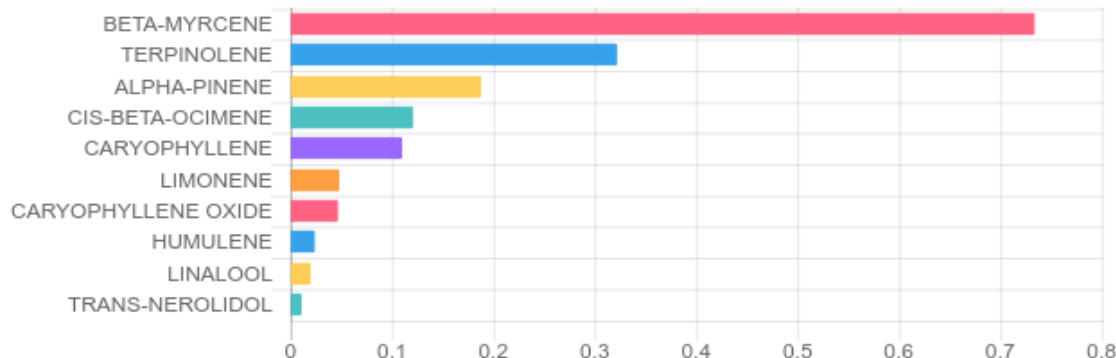
Terpene	Results (%)	LOQ (%)	LOD (%)
3-CARENE	B/LOQ	0.0067%	0.0063%
ALPHA-PINENE	0.188%	0.0067%	0.0063%
ALPHA-TERPINENE	B/LOQ	0.0067%	0.0063%
BETA-MYRCENE	0.734%	0.0067%	0.0063%
CARYOPHYLLENE	0.110%	0.0067%	0.0063%
CARYOPHYLLENE OXIDE	0.047%	0.0067%	0.0063%
CIS-BETA-OCIMENE	0.121%	0.0067%	0.0031%
GAMMA-TERPINENE	B/LOQ	0.0067%	0.0016%
GUAIOL	0.011%	0.0067%	0.0063%
HUMULENE	0.024%	0.0067%	0.0063%
LIMONENE	0.048%	0.0067%	0.0063%
LINALOOL	0.020%	0.0067%	0.0063%
TERPINOLENE	0.322%	0.0067%	0.0063%
TRANS-BETA-OCIMENE	B/LOQ	0.0067%	0.0031%

Terpene	Results (%)	LOQ (%)	LOD (%)
TRANS-NEROLIDOL	0.011%	0.0067%	0.0063%

### Terpenes Breakdown



### Top Terpenes Results:



### Tested for but not present:

CAMPHENE, BETA-PINENE, P-CYMENE, EUCALYPTOL, ISOPULEGOL, GERANIOL, CIS-NEROLIDOL, ALPHA-BISABOLOL



4001 SW 47th Avenue Suite 208  
 Davie, FL 33314  
 1-833-TEST-CBD  
 info@greenscientificlabs.com



Accreditation #103104



Dr. Andrew Hall, Ph.D., CSO & Lab Director

Green Scientific Labs uses its best efforts to deliver high quality results and to verify that the data contained therein are based on sound scientific judgment and levels listed are guidelines only and all data was reported based on standard laboratory procedures and deviations. However Green Scientific Labs makes no warranties or claims to that effect and further shall not be liable for any damage or misrepresentation that may result from the use or misuse of the data contained herein in any way. Further, Green Scientific Labs makes no claims regarding representations of the analyzed sample to the larger batch from which it was taken. Data and information in this report are intended solely for the individual(s) for whom samples were submitted and as part of our strict confidentiality policy, Green Scientific Labs can only discuss results with the original client of record.