

Sugar Babies

Sample ID: 2006KCA0079.0207

Cultivar: N/A

Matrix: Plant

Type: Biomass

Sample Size:

Received: 06/02/2020

Completed: 06/05/2020

Batch#:



Summary

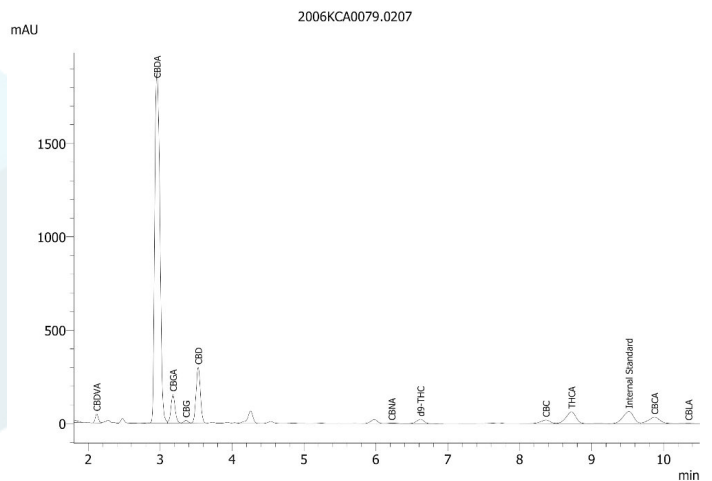
Test	Date Tested	Result
Cannabinoids	06/03/2020	Complete
Moisture	06/03/2020	7.0%
Terpenes	06/04/2020	Complete
Microbials	06/05/2020	Complete
Mycotoxins	06/04/2020	Complete
Pesticides	06/04/2020	Complete
Heavy Metals	06/05/2020	Complete

Cannabinoids by HPLC-PDA

Complete

0.18289% Δ9 THC	14.97398% Total CBD	19.38248% Total Cannabinoids	7.0% Complete Moisture Content	Not Tested Foreign Matter
---------------------------	-------------------------------	--	---	-------------------------------------

Analyte	LOD	LOQ	Result	Result
	%	%	%	mg/g
CBC	0.00095	0.00280	0.16822	1.6822
CBCA	0.00181	0.00540	0.89498	8.9498
CBCV	0.00060	0.00180	ND	ND
CBD	0.00081	0.00240	1.43476	14.3476
CBDA	0.00043	0.00130	15.43810	154.3810
CBDV	0.00061	0.00180	ND	ND
CBDVA	0.00021	0.00060	0.12303	1.2303
CBG	0.00057	0.00170	0.07875	0.7875
CBGA	0.00049	0.00150	0.55004	5.5004
CBL	0.00112	0.00330	ND	ND
CBLA	0.00124	0.00370	0.01998	0.1998
CBN	0.00056	0.00170	ND	ND
CBNA	0.00060	0.00180	0.02339	0.2339
Δ8-THC	0.00104	0.00310	ND	ND
Δ9-THC	0.00076	0.00230	0.18289	1.8289
THCA	0.00084	0.00250	0.46834	4.6834
THCV	0.00069	0.00210	ND	ND
THCVA	0.00062	0.00190	ND	ND
Total THC			0.59363	5.9363
Total CBD			14.97398	149.7398
Total			19.38248	193.8248



Total THC = THCA * 0.877 + Δ9-THC
Total CBD = CBDA * 0.877 + CBD
LOD = Limit of Detection
LOQ = Limit of Quantitation
ND = None Detected

For plant material, the reported result is based on a sample weight with the applicable moisture content for that sample.

Wes Rogers
Principal Scientist
06/05/2020

Sugar Babies

Sample ID: 2006KCA0079.0207

Cultivar: N/A

Matrix: Plant

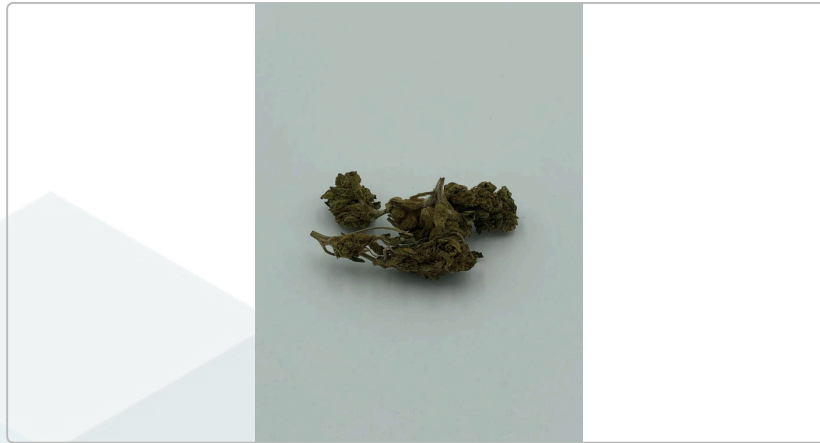
Type: Biomass

Sample Size:

Received: 06/02/2020

Completed: 06/05/2020

Batch#:



Heavy Metals by ICP-MS

Complete

Analyte	LOD µg/g	LOQ µg/g	Mass µg/g
Arsenic	0.002	0.02	ND
Cadmium	0.001	0.02	ND
Lead	0.002	0.02	ND
Mercury	0.012	0.05	ND

Date Tested: 06/05/2020
LOD = Limit of Detection
LOQ = Limit of Quantitation
ND = None Detected



Wes Rogers
Principal Scientist
06/05/2020

Sugar Babies

Sample ID: 2006KCA0079.0207

Cultivar: N/A

Matrix: Plant

Type: Biomass

Sample Size:

Received: 06/02/2020

Completed: 06/05/2020

Batch#:

Pesticides by LCMS/MS & GCMS/MS

Complete

Analyte	LOD PPM	LOQ PPM	Mass PPM	Analyte	LOD PPM	LOQ PPM	Mass PPM
Abamectin	0.001	0.005	ND	Hexythiazox	0.001	0.005	ND
Acephate	0.001	0.005	ND	Imazalil	0.001	0.005	ND
Acetamiprid	0.001	0.005	ND	Imidacloprid	0.001	0.005	ND
Aldicarb	0.001	0.005	ND	Kresoxim Methyl	0.001	0.005	ND
Azoxystrobin	0.001	0.005	ND	Malathion	0.001	0.005	ND
Bifenazate	0.001	0.005	ND	Metalaxyl	0.001	0.005	ND
Boscalid	0.001	0.005	ND	Methiocarb	0.001	0.005	ND
Carbaryl	0.001	0.005	ND	Methomyl	0.001	0.005	ND
Carbofuran	0.001	0.005	ND	Mevinphos	0.001	0.005	ND
Chlorantraniliprole	0.001	0.005	ND	Myclobutanil	0.001	0.005	ND
Chlordane	0.001	0.005	ND	Oxamyl	0.001	0.005	ND
Chlorfenapyr	0.001	0.005	ND	Pacllobutrazol	0.001	0.005	ND
Chlorpyrifos	0.001	0.005	ND	Parathion Methyl	0.001	0.005	ND
Clofentezine	0.001	0.005	ND	Pentachloronitrobenzene	0.001	0.005	ND
Coumaphos	0.001	0.005	ND	Phosmet	0.001	0.005	ND
Daminozide	0.001	0.005	ND	Piperonyl Butoxide	0.001	0.005	ND
Diazinon	0.001	0.005	ND	Propiconazole	0.001	0.005	ND
Dichlorvos	0.001	0.005	ND	Propoxur	0.001	0.005	ND
Dimethoate	0.001	0.005	ND	Pyridaben	0.001	0.005	ND
Dimethomorph	0.001	0.005	ND	Spinetoram	0.001	0.005	ND
Ethoprophos	0.001	0.005	ND	Spinosad	0.001	0.005	ND
Etofenprox	0.001	0.005	ND	Spiromesifen	0.001	0.005	ND
Etoxazole	0.001	0.005	ND	Spirotetramat	0.001	0.005	ND
Fenhexamid	0.001	0.005	ND	Spiroxamine	0.001	0.005	ND
Fenoxycarb	0.001	0.005	ND	Tebuconazole	0.001	0.005	ND
Fenpyroximate	0.001	0.005	ND	Thiacloprid	0.001	0.005	ND
Fipronil	0.001	0.005	ND	Thiamethoxam	0.001	0.005	ND
Flonicamid	0.001	0.005	ND	Trifloxystrobin	0.001	0.005	ND
Fludioxonil	0.001	0.005	ND				

Date Tested: 06/05/2020
LOD = Limit of Detection
LOQ = Limit of Quantitation
ND = None Detected



Wes Rogers
Principal Scientist
06/05/2020

Sugar Babies

Sample ID: 2006KCA0079.0207

Cultivar: N/A

Matrix: Plant

Type: Biomass

Sample Size:

Received: 06/02/2020

Completed: 06/05/2020

Batch#:

Microbials by qPCR

Complete

Analyte

Result

Aerobic Bacteria

CFU/g

Shiga toxin-producing E. Coli

Not Detected in 1g

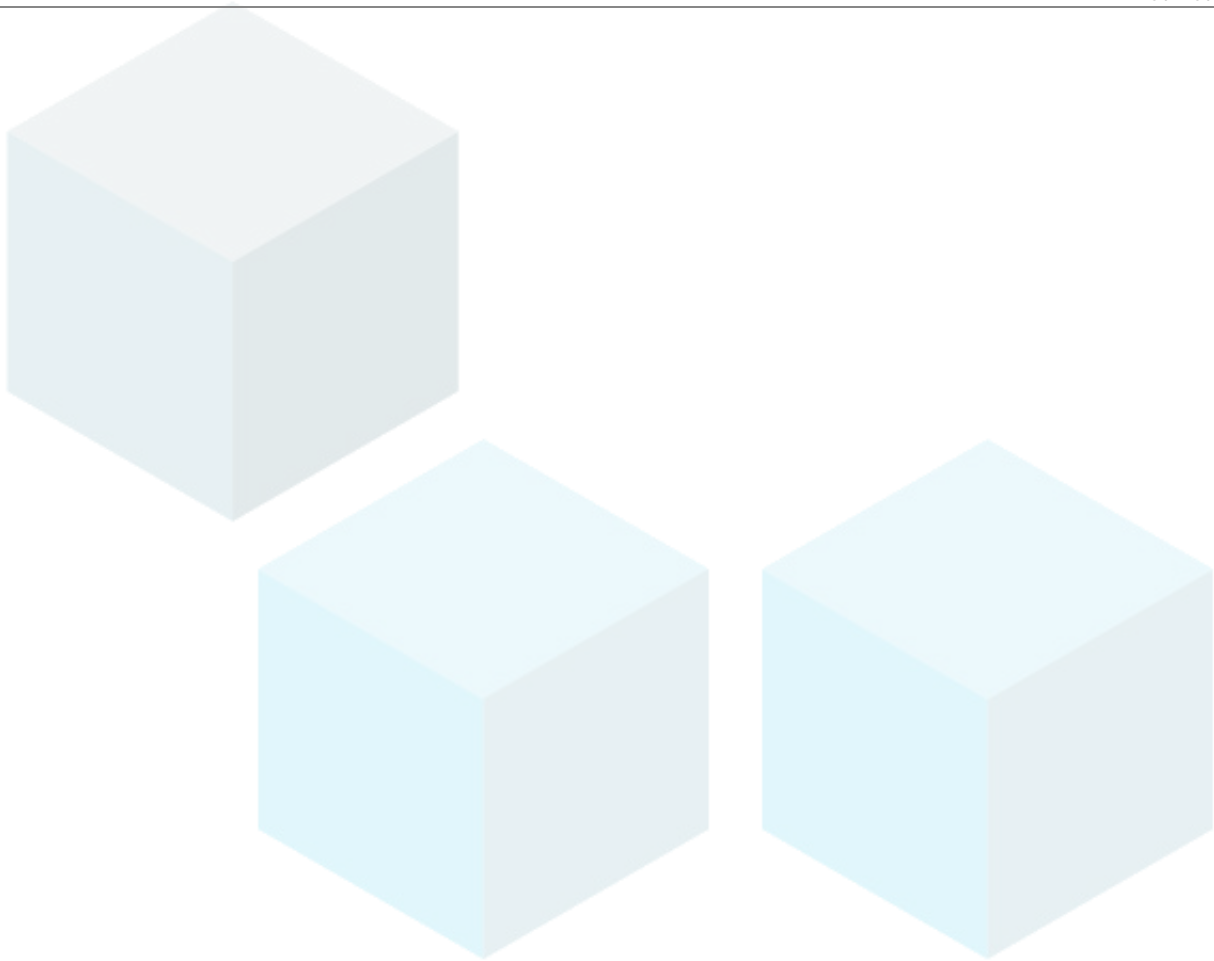
Enterobacteriaceae

Not Detected in 1g

Salmonella

Not Detected in 1g

Not Detected in 1g



Date Tested: 06/05/2020

TNTC = Too Numerous to Count; Unless otherwise stated all quality control samples performed within specifications established by the Laboratory.



Wes Rogers
Principal Scientist
06/05/2020

Sugar Babies

Sample ID: 2006KCA0079.0207

Cultivar: N/A

Matrix: Plant

Type: Biomass

Sample Size:

Received: 06/02/2020

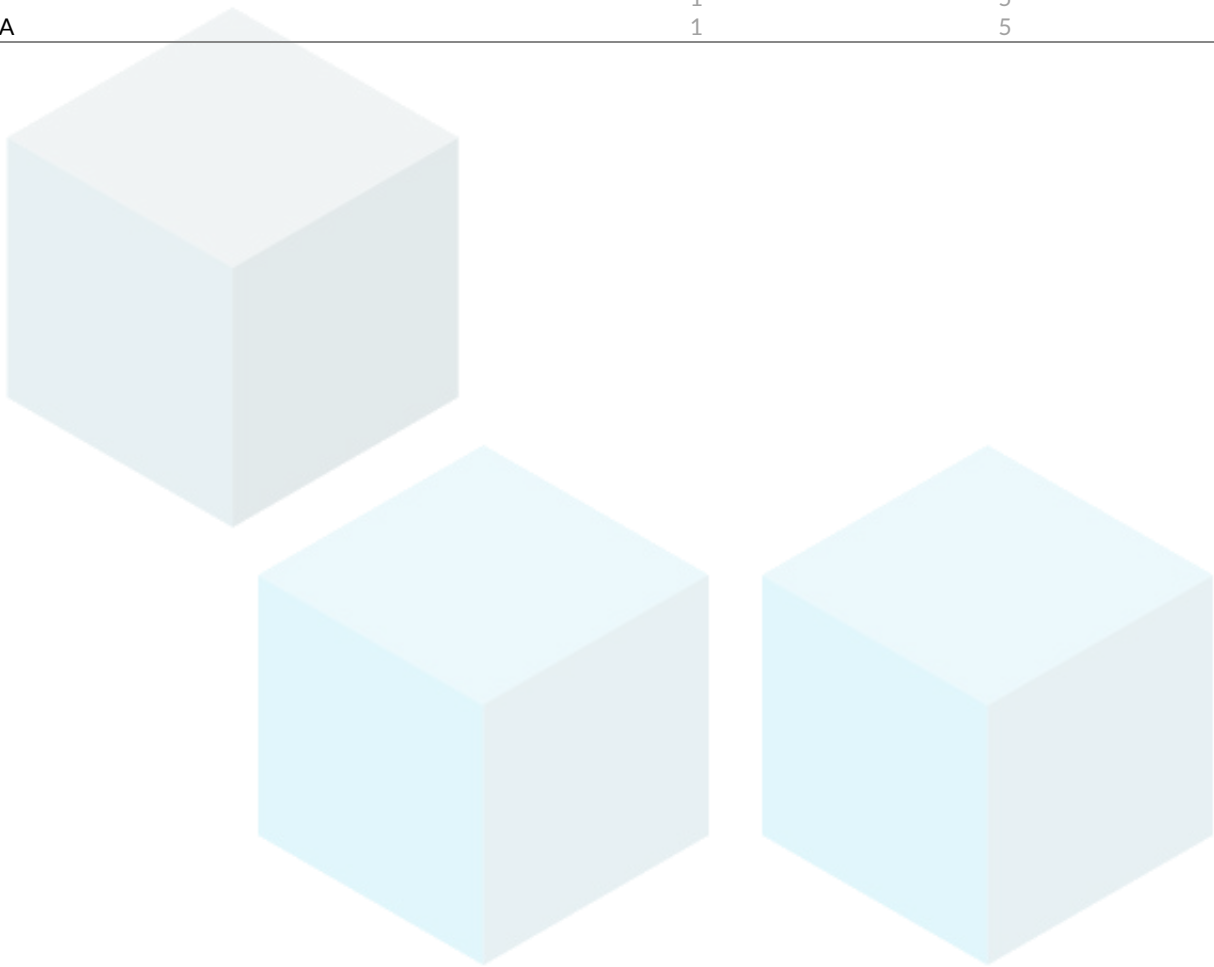
Completed: 06/05/2020

Batch#:

Mycotoxins by LCMS/MS

Complete

Analyte	LOD PPB	LOQ PPB	Units PPB
B1	1	5	ND
B2	1	5	ND
G1	1	5	ND
G2	1	5	ND
Ochratoxin A	1	5	ND



Date Tested: 06/05/2020
LOD = Limit of Detection
LOQ = Limit of Quantitation
ND = None Detected



Wes Rogers
Principal Scientist
06/05/2020

Sugar Babies

Sample ID: 2006KCA0079.0207

Cultivar: N/A

Matrix: Plant

Type: Biomass

Sample Size:

Received: 06/02/2020

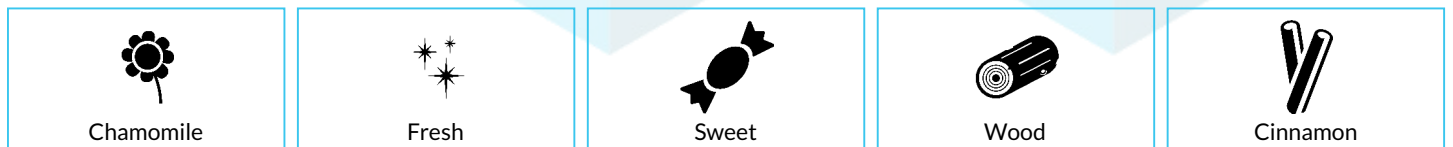
Completed: 06/05/2020

Batch#:

Terpenes by HS-GC/MS

Analyte	LOD	LOQ	Mass	Mass
	%	%	%	mg/g
α-Bisabolol	0.00001	0.00005	0.079641	0.79641
Borneol	0.00001	0.00005	0.005727	0.05727
Camphene	0.00001	0.00005	0.002647	0.02647
Camphor	0.00001	0.00005	ND	ND
3-Carene	0.00001	0.00005	ND	ND
Caryophyllene oxide	0.00001	0.00005	0.019286	0.19286
β-Caryophyllene	0.00001	0.00005	0.191771	1.91771
α-Cedrene	0.00001	0.00005	ND	ND
Cedrol	0.00001	0.00005	ND	ND
Endo-Fenchyl alcohol	0.00001	0.00005	0.016136	0.16136
Eucalyptol	0.00001	0.00005	0.002124	0.02124
Fenchone	0.00001	0.00005	0.001497	0.01497
Geraniol	0.00001	0.00005	ND	ND
Geranyl acetate	0.00001	0.00005	ND	ND
Guaiol	0.00001	0.00005	0.053369	0.53369
Hexahydro thymol	0.00001	0.00005	ND	ND
α-Humulene	0.00001	0.00005	0.067533	0.67533
Isoborneol	0.00001	0.00005	ND	ND
Isopulegol	0.00001	0.00005	ND	ND
Limonene	0.00001	0.00005	0.034082	0.34082
Linalool	0.00001	0.00005	0.00941	0.0941
β-Myrcene	0.00001	0.00005	0.149019	1.49019
Nerol	0.00001	0.00005	ND	ND
Ocimene	0.00001	0.00005	0.022888	0.22888
α-Phellandrene	0.00001	0.00005	ND	ND
α-Pinene	0.00001	0.00005	0.050275	0.50275
β-Pinene	0.00001	0.00005	0.018397	0.18397
Pulegone	0.00001	0.00005	ND	ND
Sabinene	0.00001	0.00005	ND	ND
Sabinene hydrate	0.00001	0.00005	0.000878	0.00878
α-Terpinene	0.00001	0.00005	0.000603	0.00603
γ-Terpinene	0.00001	0.00005	0.000649	0.00649
α-Terpineol	0.00001	0.00005	0.007514	0.07514
γ-Terpineol	0.00001	0.00005	ND	ND
Terpinolene	0.00001	0.00005	0.00081	0.0081
Valencene	0.00001	0.00005	ND	ND
cis-Nerolidol	0.00001	0.00005	ND	ND
trans-Nerolidol	0.00001	0.00005	0.009017	0.09017
Total			0.740000	7.40000

Primary Aromas



Date Tested: 06/05/2020
LOD = Limit of Detection
LOQ = Limit of Quantitation
ND = None Detected



Wes Rogers
Principal Scientist
06/05/2020