

Catalog
2021

GRAPHIC

S U P P L Y | S O U R C E

SIGN
MOUNTING
HARDWARE

BANNER
MOUNTING
HARDWARE

ADHESIVE
PRODUCTS

MEDIA
RACKS

GROMMETS
&
MACHINES

SHOP TOOLS
& SUPPLIES

VEHICLE
WRAP
TOOLS

CUTTING
TOOLS

PERSONAL
PROTECTION
PRODUCTS

*Everything to Make
Your Job Faster,
Safer and Easier!*

TABLE OF CONTENTS

SIGN MOUNTING HARDWARE

SOOPER BRACKETS / SOOPER POLE MOUNT.....	02
90° SUPER BRACKET / TAG-IT BRACKET	
SLATWALL BRACKET / QUICK RELEASE SS STRAPS	
PICK N' HOOK / TWIST N' HOOK / SIGNABRACKET.....	03
SIGN CLIP	
SPIDERFEET.....	04
SOOPER HINGE / SOOPER FEET / 4-PAK SOOPER CEILING HOOKS...	05

BANNER MOUNTING HARDWARE

BANNER TRAK KIT.....	06
BANNER TRAK PARTS.....	07
TRADE SHOW BANNER BACKDROP KIT.....	08
BLACK WALL MOUNT BRACKET KIT	
POLE BANNER SINGLE KIT ALUMINUM 1"	
POLE BANNER DOUBLE KIT ALUMINUM 1".....	09
1" ALUMINUM POLE BANNER PARTS	
HD POLE BANNER SINGLE KIT ALUMINUM 1.66"	
HD POLE BANNER DOUBLE KIT ALUMINUM 1.66"	
HD 1.66" ALUMINUM POLE BANNER PARTS.....	10
REPLACEMENT POLES	
POLE BANNER SINGLE KIT FIBER-GLASS	
POLE BANNER DOUBLE KIT FIBER-GLASS	
LINKLIP / LINKLAMP / SIBOLT.....	11

ADHESIVE PRODUCTS

BANNER BOND / BANNER BOND ULTRA.....	12
POLE TAPE / POWER TAPE	
MEGA TAPE / POWER PUNCH/ BRAVO TABS / POLY TABS...	13
TEFLON SQUEEGEE TAPE	
POWER TABS.....	14

MEDIA RACKS

MOBILE RACK 16 ROLLS.....	15
MONDO RAXX JUMBO MEDIA STORAGE	
MONDO RAXX JUMBO BANNER MATERIAL STORAGE	
MOBILE RACK 12 SPINDLES 2" CORE.....	16
MOBILE RACK 16 SPINDLES 3"	
FLOOR RACK HD 44 ROLLS 3" CORE	
WALL RACK HD 20 ROLLS 3" CORE	
SOOPER CLIP / Z-STRAPS / CORE ID CARDS.....	17
SOOPER STRAPS / 1" QUICK RELEASE CLAMP.....	18

GROMMETS & MACHINES

MANO HAND GROMMET PRESS / PLASTIC GROMMETS.....	19
DIES FOR CLEAR, BLACK & WHITE PLASTIC GROMMETS	
DIES FOR METAL GROMMETS THAT FIT MANO PRESS	
SOOPER ACE GROMMET PRESS.....	20
METAL GROMMETS / DIE FOR METAL GROMMETS	
CLEAR GROMMETS COMBO KITS.....	21
METAL GROMMETS SIZE GUIDE.....	22
ECONO AIR GROMMET PRESS / DIE.....	23
PRO - MATIC GROMMET MACHINES	
PRO - MATIC GROMMET MACHINES / DIE.....	24
FULLY AUTOMATIC GROMMET MACHINE.....	25

SHOP TOOLS / SUPPLIES

SOOPER ROUNDER / REPLACEMENT DIES.....	26
SOOPER EDGE SAFETY RULER.....	27
THE BIG BLUE SAFETY RULER / RULER ACCESSORIES	
X-TREME STAINLESS STEEL RULERS.....	28
X-TREME HD ALUMINUM STRAIGHT EDGE "FOUR PACK" RULERS	
COMPLETE WEEDING KIT	
PRO-ROLL TAPE APPLICATOR / PRO-TABLE TOP APPLICATOR.....	29
MINI ROLLER ASSEMBLY.....	30
X-TREME CUTTING MATS / GRIDS.....	31
TABLE FRAMES.....	32
MOBILE MULTI USE TABLE FRAME.....	33
ALUMINUM SQUEEGEES / ALUMINUM HD LINER CUTTER.....	34
QUATRO BRAYER.....	35
THE BIG BLADE JUMBO SIZE PLASTIC RAZOR BLADE	
LIL' CHIZLER	
SOOPER TACK ROLLERS / CLEANING PADS.....	36

WRAP TOOLS / ACCESSORIES

WRAP KITS.....	37
WET EDGE SQUEEGEE.....	38
SQUEEGEES / SQUEEGEE SHARPENER.....	39
LIL' CHIZLER / EZ REACH ULTRA / GATOR BLADE	40
ROLLEPRO / ROLLEPRO TEXTURED SURFACE KIT	
HOT SHOT / REPLACEMENT BULBS.....	41 - 42
MOULDING REMOVAL TOOLS / BODY CLIP SET.....	43
THE MAGNET TOOL POUCH	
THE HANDLER FILM CUTTER / TABLE FRAME MOUNT.....	44
RIVET WHEEL / THE TAPE THING / RIVET BRUSH.....	45
SOOPER CHAIRS	
X-TREME MAGZ / MEGA MAGZ / HEATER HOLDER.....	46
LOW PROFILE MAGNETS	
WRAP GLOVES.....	47
WRAP KNIFE / TWIN WRAP KNIFE / EMBLEM REMOVAL TOOL	48
WRAP PRO TUCK & GROOVE TOOL KIT	
INFRARED THERMOMETER / HEAT GUNS.....	49
INSTALLER PEN / SEALITPEN	

CUTTING TOOLS & BLADES

TWIN WRAP KNIFE / WRAP CUT KNIFE	50
ALUMINUM HD LINER / POCKET LINER / ECONOMY LINER	
SNAPPY SAFE CUTTER / CORO CUTTER	
OLFA STANDARD DUTY CUTTERS.....	51
OLFA HEAVY DUTY CUTTERS.....	52
OLFA SPECIALTY CUTTERS.....	53
OLFA REPLACEMENT BLADES.....	54
REPLACEMENT BLADES / FOAMBOARD STRAIGHT CUTTER.....	55

PERSONAL PROTECTION PRODUCTS

MASKS / FACE SHIELD.....	56
HAND SANITIZER / WIPES / INFRARED THERMOMETER.....	57
VINYL GLOVES / HAND SANITIZER STATION.....	58
ALCOHOL 75% / SUGLE DESINFECTANT SPRAY	
MONSTER LASER ENGRAVING.....	59
SOOPER GRAPHICS SHOP SET-UP CHECK LIST.....	60

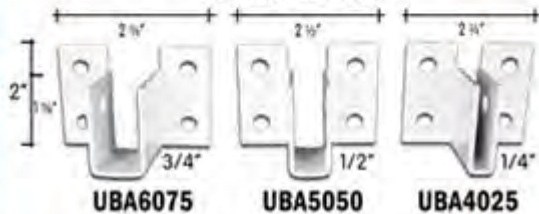
GRAPHIC
SUPPLY | SOURCE

Gooper BRACKETS

Aluminum Powder Coated, will not rust.

SOOPER "U" BRACKETS

Available in 3 Sizes



SOOPER CENTER BRACKETS

Extruded Aluminum. Available in 3 Sizes



SOOPER SIGN HANGERS

Bolts thru sign face, clean finished look



SLATWALL BRACKET TO MOUNT ON SLAT WALL

Mount any size signs



MON4007

Gooper Pole Mount

For strapping to large poles

Heavy Duty 1/8" Steel Construction Pole Mount



Sign Mounting Brackets

- ▶ 5/16" Threaded Hole
- ▶ Slotted for 3/4" QR Strap
- ▶ Bright Finished
- ▶ Bolt Included

SMB1000
SMB1000B 50 Pack

Use Stainless Steel Mounting Straps to attach SMB1000 bracket Sold Separately



SSC188

90° SUPER BRACKET



Universal Mounting Bracket (Bright Finish)

BT1010

TAG-IT BRACKET



- Use to stretch banners between poles, fences, trees, etc.
- Use with Banner Trak to attach to the bottom of the banner



TB1

Use Quick Release Stainless Steel Mounting Straps

Sold Separately



SSC188



Simply press the spike-end into the edge of the coroplast so that it penetrates across the corrugated flutes, then hang it up.



PH100W (100 Pack - White) **PH100BLK** (100 Pack - Black)

Both available in White & Black



Use with foam or gator board. Just twist the hook into the side of your foamboard substrate while pressing it into the foamboard. Once in place, just hang it up.



TH100W (100 Pack - White) **TH100BLK** (100 Pack - Black)

Both available in White & Black

signAbracket
Corrugated Plastic Mounting Bracket



ROUND POLES

90 DEGREE CORNERS

FLAT WALLS

- Specifically designed for corrugated plastic substrates from 3 – 6mm thick.
- Use to secure signs in a variety of different applications including Poles, Post and Walls.
- Designed for various mounting options including screws, bolts and / or straps.
- Eco-friendly product that is completely recyclable.



SAB2 (2 Pack)
SABB (24 Pack)

signclip™

FOR MOUNTING CORRUGATED PLASTICS



View of mounted clip from backside

Kit Includes:
Super clear front bracket, back locking spring clip.
(36" Zip strap not included)

Sold Separately

SCLIP20 (20 Pack)

SCLIP50 (50 Pack)

PTRUVBLK (36" Zip Ties)

SUG



Stand-Up Sign Holder

- Black Powder Coated Steel
- Stylish High-Tech Design
- Ideal For Standing Up Media, Single Or Double Sided
- Easy to Use and Re-Use
- POP Display



Part#	Description
SF1025BLK	1/4" Stand-Up
SF1050BLK	1/2" Stand-Up
SFJ1050BLK	1/2" Jumbo Stand-Up
SFJ1000BLK	Adjustable Stand-Up
SFB2000	Spiderbootz



SF1025BLK



SF1050BLK



SFJ1050BLK



SFJ1000BLK



SFB2000



SF1025BLK

Business Card Holder

- Work on 1/4" SpiderFeet
- Non-Slip, Non-Scratch
- Countertop Display
- POP Display



SFB2000



For use on SF1025BLK only

MORE INFO: (888) 679-5175 | sales@gsswf.com | www.gsswf.com

SIGN MOUNTING HARDWARE

SOOPER HINGE



- Make Professional A-Frame Signs
- Sign folds flat when not in use
- 14" long with built in self-lock (no unsightly chains required)
- Fits any thickness from 1/4" and up
- Aluminum Extrusion with black anodized finish
- Makes Any Size A-Frame
- Use 2 hinges to make larger signs



Sooper Hinge



SH

SOOPER FEET



- Keeps your boards off the ground and away from moisture

Sooper Feet



SHF

4-PAK SOOPER CEILING HOOKS

- For mounting signs and banners to T-Bar Ceilings.
- Coated with white enamel paint to match most drop ceiling frames.
- Attach to ceiling frames, cabinets or tool boxes.
- 28lbs of pull weight.



SUG

CH4W (4-pack)

Banner Trak



The easy Way To Have
Your Banners Hang
Straight Every Time



12' x 88' Outdoor Banner. Hung by The Market King Company.
"Banner Trak saved us over 10 hours of labor"



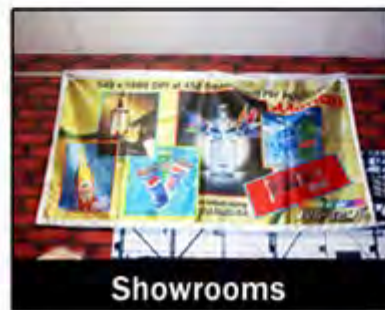
- Use your regular grommets with sliders and thumbscrews to attach banner to Banner Trak
- Great for indoor or outdoor use
- Mounts to walls directly with proper hardware
- Optional mounting accessories available



Gymnasiums



Tradeshow Booths



Showrooms



Kit includes:

- | |
|--------------------------------------|
| 2- 4' Section 1" Wide rail |
| 1- BT-1002 Connector |
| 2- BT-1003 Pair Sliders/ Thumbscrews |
| 1- BT-1005 pair End Caps |

BTK1000

MORE INFO: (888) 679-5175 | sales@gsswf.com | www.gsswf.com

BANNER TRAK - BANNER MOUNTING HARDWARE

6

BANNER TRAK - PARTS



Doing large jobs or a unique banner application?

Pick -N- Choose your parts below to build almost any application you can think of.

4' Banner Trak Rail

Use multiple traks to build any size indoor or outdoor banner you need.

BT1001

Connector

Great for connecting Banner Trak rails together to build your custom size.



BT1002

Stainless Steel Pins



Use these pins to directly connect 2 48" or 24" Banner Traks together.

SSPIN

Slider w/ thumbscrew



Slide them anywhere on the trak to align with your banners grommet.

2 Pack

BT1003

Slatwall Kit



Use these Slatwall clips with Banner Trak to easily attach to slatwall.

BT1004

End Caps



Use these end caps on Banner Trak rails for a finished appearance.

BT1005

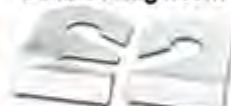
Universal Mount Kit



Use these clamps for installing your Banner Trak onto poles.

BT1006

T-Bar Ceiling Hooks



The perfect solution to all those drop down ceiling installations.

BT1008

6" Hang Rods



Use these hang rods whenever you are doing a ceiling or drop down installation.

BT1009

90° Super Brackets



Use these super strong 90 degree angles with Banner Trak or other sign mounting applications to hang your projects on shelves, posts or walls.

BT1010

Multi Media Clip

Use these super strong multi-media clips with Banner Trak sliders & thumbscrews or other sign mounting applications to hang your projects.



BT1011

Xtender



Use this easy connector to extend your Banner Trak to as long as you need.

BT1012

24" Connector

Use this extender to attach to the 4 foot rails to even out your lengths or add that last 2 feet as needed.



BT1013

12" Hang Rods



Use these hang rods whenever you are doing a ceiling or drop down installation.

BT1014

Linklip Chainlink Fence Mount w/Bolt



SLK3000

Linklamp Banner Plate



SLKLAMP

Banner Trak Sample / Sales Kit



A low cost kit for setting up a complete display in your store or a sales kit for your sales people to use with clients.

BTSAMPLEKIT

BT Magz



Use Magnet Mount with Banner Trak for hanging banners on surfaces like Pallet racks, metal shelving or any metal surface.

Each BTMAG

TRADE SHOW BANNER BACKDROP KIT

- Easy to Use • Installs in Minutes • Banner Backdrops
- Banner Curtain/Dividers • Banner Table Skirts



BTSHOW10 Kit Includes:

- 2- BT1001 4' Rail
- 1- BT1013 24" Connector
- 2- BT1003 Pair Sliders/ Thumbscrews
- 1- BT1005 pair End Caps
- 2- BT1006 pair Universal Clamps

BTSHOW10

BTSHOW20 Kit Includes:

- 5- BT1001 4' Rail
- 8- SSPIN Connector Pins
- 5- BT1003 Pair Sliders/ Thumbscrews
- 1- BT1005 pair End Caps
- 4- BT1006 pair Universal Clamps

BTSHOW20

BLACK WALL MOUNT BRACKET KIT

Black glass filled nylon - Vertical wall mount bracket kit to install banners on wall and flat surfaces.

Part#	Description
WBB18	18" Fiber-Glass Pole Wall Mount - Kit
WBB24	24" Fiber-Glass Pole Wall Mount - Kit
WBB30	30" Fiber-Glass Pole Wall Mount - Kit
WBB36	36" Fiber-Glass Pole Wall Mount - Kit
HDWBLK	Hardware Kit

- Indoor use
- Choose Your Pole Size
- 3/4" Solid Poles



POLE BANNER SINGLE KIT - ALUMINUM 1"



SINGLE KIT Includes:

	Qty	Part#	Description
A	2	BMHS1	1" Single Mount Banner Pole Bracket
B	2	BP1M3	1" x 3' Aluminum Pole
C	4	SSC188	Quick Release Stainless Steel Strap 40"
D	2	PTRUVBLK	Cable Ties 36"



BPS036

MORE INFO: (888) 679-5175 | sales@gsswf.com | www.gsswf.com

POLE BANNER DOUBLE KIT - ALUMINUM 1"



DOUBLE KIT Includes:



	Qty	Part#	Description
A	2	CBS1	1" Double Mount Banner Pole Bracket
B	2	BP1M6	1" x 6' Aluminum Pole
C	4	SSC188	Quick Release Stainless Steel Strap 40"
D	2	PTRUVBLK	Cable Ties 36"



BPD036

1" ALUMINUM POLE BANNER PARTS



BMHS1
1" Single Mount Banner Pole Brackets



SMS1
1" Mounting Bracket Horizontal - Vertical



CBS1
1" Double Mount Banner Pole Bracket

HD POLE BANNER SINGLE KIT - ALUMINUM 1.66"



- For areas concerned about high winds
- Thicker, stronger Poles

SINGLE KIT Includes:

	Qty	Part#	Description
A	2	BMHS166	1.66" Single Mount Banner Pole Bracket
B	2	BP166M3	1.66" x 3' Aluminum Pole
C	4	SSC188	Quick Release Stainless Steel Strap 40"
D	2	PTRUVBLK	Cable Ties 36"



BPHDS

HD POLE BANNER DOUBLE KIT - ALUMINUM 1.66"



DOUBLE KIT Includes:



	Qty	Part#	Description
A	2	CBS166	1.66" Double Mount Banner Pole Bracket
B	2	BP166M6	1.66" x 6' Aluminum Pole
C	4	SSC188	Quick Release Stainless Steel Strap 40"
D	2	PTRUVBLK	Cable Ties 36"



BPHDD

HD 1.66" ALUMINUM POLE BANNER PARTS



BMHS166
1.66" Single Mount Banner Pole Brackets



SMS166
1.66" Mounting Bracket Horizontal - Vertical



CBS166
1.66" Double Mount Banner Pole Bracket

REPLACEMENT POLES



ALUMINUM POLES

Part#	Size	Description
BP1M3	1" x 3'	Aluminum Pole
BP1M4	1" x 4'	Aluminum Pole
BP1M5	1" x 5'	Aluminum Pole
BP1M6	1" x 6'	Aluminum Pole
BP1M8	1" x 8'	Aluminum Pole
BP1M10	1" x 10'	Aluminum Pole

Part#	Size	Description
BP166M3	1.66" x 3'	Aluminum Pole
BP166M4	1.66" x 4'	Aluminum Pole
BP166M5	1.66" x 5'	Aluminum Pole
BP166M6	1.66" x 6'	Aluminum Pole

POLE BANNER SINGLE KIT - FIBER-GLASS

SINGLE KIT Includes:

- | | |
|------------------|-------------------------------|
| 2 - Poles | 2 - End caps |
| 2 - Brackets | 2 - Lock rings |
| 2 - Plastic ties | 4 - 40" Stainless steel bands |
| 2 - Clevis Pins | |



Part #	Description
AS18	Single set 18" Kit
AS24	Single set 24" Kit
AS30	Single set 30" Kit
AS36	Single set 36" Kit
HDWBLK	Hardware Kit



*3/4" Poles - 2 1/2" Pole Pocket w/#2 Grommet Recommended



POLE BANNER DOUBLE KIT - FIBER-GLASS

DOUBLE KIT Includes:

- | | |
|------------------|-------------------------------|
| 4 - Poles | 4 - End caps |
| 4 - Brackets | 4 - Lock rings |
| 4 - Plastic ties | 4 - 40" Stainless steel bands |
| 4 - Clevis Pins | |



Part #	Description
AD18	Double set 18" Kit
AD24	Double set 24" Kit
AD30	Double set 30" Kit
AD36	Double set 36" Kit
HDWBLK	Hardware Kit



*3/4" Poles - 2 1/2" Pole Pocket w/#2 Grommet Recommended



banner on both sides of pole

MORE INFO: (888) 679-5175 | sales@gsswf.com | www.gsswf.com

BANNER TRAK - BANNER MOUNTING HARDWARE

10

LinKlip™ Chain Link Fence Mounting



LINKLIP



1. LinKlip SLK3000
 2. Chain Link Fence
 3. Substrate (Sign Face)
 4. Bolt
- * 5/16" x 18 x 1" Long

Mount Sign Faces to Chain link Fence



Use LinKlip to Mount Substrates to Chain Link Fence

SLK3000
SLK3000B (100 Pack)

LINKLAMP



1. LinKlamp SLKLAMP
 2. LinKlip SLK3000
 3. Chain Link Fence
 4. Bolt
- Use with LinKlip



Use LinKlamp with SLK3000 to Mount Banner Trak to Chain Link Fence

Mount Banner Trak to Chain Link Fence using SLK3000 LinKlip and SLKLAMP LinKlamp

SLKLAMP

SIBOLT



1. Eye Bolt
 2. LinKlamp SLKLAMP
 3. LinKlip SLK3000
 4. Chain Link Fence
- Use with LinKlip & LinKlamp
- * 5/16" x 1" eye bolt
* 18 x 1" thread count



Use LinKlamp with SLK3000 & the SIBOLT to Mount Banners to Chain Link Fence Using Bungies

Mount Banners using Eye Bolts to Chain Link Fence by using SLK3000 LinKlip and SLKLAMP LinKlamp with Eye Bolt to Clamp to fence

SIBOLT (10 Pack)

• The most simple and affordable solution for all chain link fence
 • Mounts perfectly on chain link every time!
 • Hangs solid and flexible substrates easily
 • The right tool for the job and to keep in your tool box!





BANNER BOND 72YDS

Banner Hemming Tape



- Designed specifically for hemming banners.
- Provides plasticizer resistance and easily tears
- For quick and easy banner hemming production.



BB1



BANNER BOND ULTRA 72YDS

Extra Strong Banner Hemming Tape



- The best banner hem tape in the business!
- Thicker adhesive and offers higher adhesion
- Super tacky keeps any banner media hemmed as intended.



BBU1



Part#	Description
BB1	1" x 72 yds Banner BOND Double Sided Tape
BB1B	1" x 72 yds Banner BOND Double Sided Tape <small>CASE OF 36 ROLLS</small>

Part#	Description
BBU1	1" x 72 yds Banner BOND ULTRA Double Sided Tape
BBU1B	1" x 72 yds Banner BOND ULTRA Double Sided Tape <small>CASE OF 36 ROLLS</small>

POLETAPE



- Aggressive pure adhesive film use to make pole pocket hems.
- Super strong adhesive
- Goes on like tape but sticks like hot melt glue.



Part#	Description
POLE0520	PoleTape 20 mil 1/2" x 200 ft Roll
POLE135	PoleTape 35 mil 1" x 200 ft Roll

BANNER UPS CLEAR POWERIAPE
HEM REINFORCING TAPE



- Reinforce banner edges without folding or sewing
- 1 1/2" x 36 yds Roll
- Single Sided Tape

PTAPE
5 Pack PTAPEB



Apply PowerTape to the edges on back of banner

Part#	Description
PTAPE	Power Tape 1.5" x 36 Yds
PTAPEB	Power Tape 1.5" x 36 Yds

MORE INFO: (888) 679-5175 | sales@gsswf.com | www.gsswf.com

ADHESIVE PRODUCTS

MEGATAPE

HEM REINFORCING TAPE
DOUBLE SIDED VERSION OF THE POWERTAPE



- Transparent film ideal for mesh banners
- Dramatically stronger than ordinary double-sided banner hem tape



Apply to back side banner edge



Remove liner and fold banner edge



Apply PowerTabs® or grommet or both



MEGATAPEB Case of 5 rolls

MEGATAPE

POWERPUNCH

POWERPUNCH - THE PERFECT PUNCH FOR POWERTABS®

- Cuts cleanly through tabs, PowerTape® and banner media.
- Cuts a 5/16" hole.
- Works on 4.5mm Coroplast
- Replaceable punch for long life.



PowerPunch



Replacement Punch



PPR516

PPUNCH

BANNER UPS® BRAVOTABS FINISH STRONG!

- New simple shape works great at corners or along edges
- No neck loop for improved appearance
- Fast and easy to install
- Economically priced



Install BravoTabs® at corners or along edges

BAN017 100pcs
BAN017B 500pcs

BANNER UPS® POLYTABS

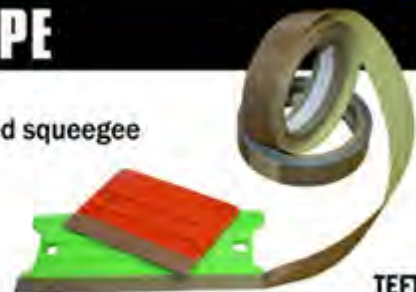
- Low-cost tabs for high volume users.
- For top strength with lightweight films.
- 2000 tabs per dispenser roll
- Perforated every four tabs.
- Now available in clear version!
- Our most economical tab.



BAN061AS White
BAN062 Clear

TEFLON SQUEEGEE TAPE

- Teflon tape that can be applied to the edges of most any sized squeegee
- Provides increased speed and makes the squeegee "glide" smoothly over most film and print media surfaces
- 1" x 18 Yds Roll



TEFTAPE1

POWER TABS

ADHESIVE GROMMET TABS

- Use Banner Ups PowerTabs® to turn your digital image into a super-strong outdoor banner-instantly!
- No sewing, grommeting or special tools required.
- PowerTabs are easy to use



Apply to one side

Apply along top and bottom edge on back of banner

Punch hole

Cut off loop if not needed

Corner Tab with Loop®



Easy and inexpensive alternative to grommets

BAN001 100 Pc
BAN001B 500 Pc

Power Tab®



For outdoor or indoor banners

BAN011 100 Pc
BAN011B 500 Pc

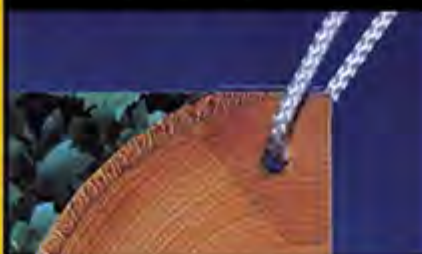
Mini Tab®



For indoor and light duty outdoor banner

BAN012 100 Pc
BAN012B 1000 Pc

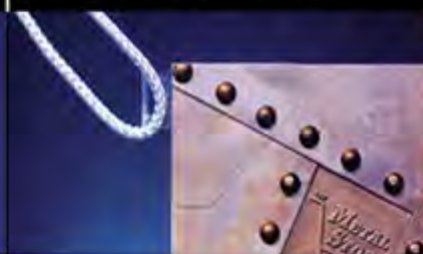
Clean Mini Tab®



For indoor and light duty outdoor banner

BAN013 100 Pc
BAN013B 1000 Pc

Clear Power Tab®



Turn digital images into strong outdoor banners

BAN014 100 Pc
BAN014B 500 Pc

Clear Edge Tab®



For indoor and light duty outdoor banners

BAN016 100 Pc
BAN016B 500 Pc

MORE INFO: (888) 679-5175 | sales@gsswf.com | www.gsswf.com

ADHESIVE PRODUCTS



MONDO MOBILE RACK

HOLD 16 ROLLS
LARGE FORMAT MEDIA

Organize your Rolls of Media & Banner Material

- All Steel Construction
- Bright Yellow
- Powder Coated Finish
- Easy Roll HD Locking Wheels
- Instructions Included
- Add your choice of 1" diameter rods (not included)



SPECS:

- Length 62"
- Width 25"
- Height 62"
- Off Ground 5"



Rubber Tips Available

Part#	Description
MMR1600	Mondo Mobile Rack
RTCT20	Rubber Tips (20 Pk) Fits 1" pipes
RTCT21	Rubber Tips (20 Pk) Fits 1 1/8" pipes

MONDO RAXX JUMBO

Bright Orange powder coated finish

Media Storage

- Holds 10 Rolls any size material
- Just mount according to your desired width
- Add your choice of 1" diameter rods (not included)



WALL RACK

10 ROLL
WALL RACK
MJ1000



MJ1000

MONDO RAXX JUMBO

Bright Yellow powder coated finish

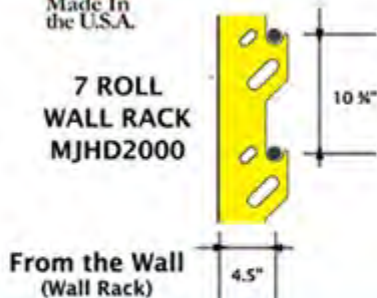
Banner Material Storage

- Holds 7 Rolls any size banner material
- Just mount according to your desired width
- Add your choice of 1" diameter rods (not included)



WALL RACK

7 ROLL
WALL RACK
MJHD2000



MJHD2000

MOBILE RACK 2" CORE

- Heavy Square Tube Construction for Excellent Durability
- Powder Coated Silver Vein (Black) Finish
- Heavy Duty Nylon Casters
- Holds 1000 Lbs

HD Mobile
Floor Rack
Holds 12 rolls

Holds 12" to 60"
Media Rolls



Measures:
17"H x 24"W x 17"D

MR12

MOBILE RACK 3" CORE

- Heavy Square Tube Construction for Excellent Durability
- Powder Coated Silver Vein (Black) Finish
- Heavy Duty Nylon Casters
- Holds 1000 Lbs

HD Mobile
Floor Rack
Holds 16 rolls

Holds 12" to 60"
Media Rolls



Measures:
17"H x 24.5"W x 25"D

MR16

FLOOR RACK HEAVY DUTY 3" CORE

The Ultimate Organizer for any shop



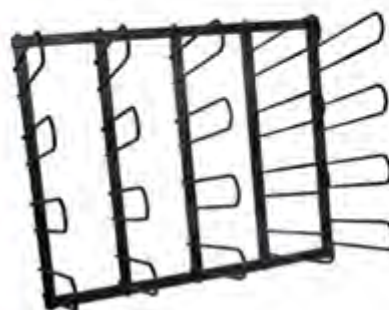
- Powder coated silver vein (black) finish
- Easy to assemble
- Holds 44 12" to 30" Media rolls
- Steel Construction

Holds 44
12" to 30" Media rolls

Measures 74^{5/8}"H x 32"W x 19"D x 5/6"

FR44

WALL RACK HEAVY DUTY 3" CORE



Holds 20
12" to 30"
Media rolls

- Holds up to 20 rolls of vinyl
- Will hold vinyl rolls up to 30" long
- Powder coated Silver Vein Black Finish
- Easy to Assemble
- Shipping weight: 29 lbs
- Steel construction

Measures 26"H x 32"W x 14"D x 5/6"

WR20

SOOPER CLIP



- Keeps vinyl and print media properly wound
- No more replacing tape or damaging vinyl
- 2 Sizes for both 10 and 50 yard rolls
- Doesn't scratch or leave marks on your delicate rolls



(12 Pack - 6 large/6 small)
(50 Pack - 25 large/25 small)

Problem
Solution



SC12
SC50

Z-STRAPS



- Die-cut hook & loop
Slotted for extra strength



SIZE: 7/16" X 23"

5 Packs

- ZS5BLK Black
- ZS5RED Red
- ZS5BLU Blue
- ZS5YLW Yellow

10 Packs

- ZS10BLK Black
- ZS10RED Red
- ZS10BLU Blue
- ZS10YLW Yellow



SIZE:
1/2" X 23"



Problem

Solution

CORE ID CARDS

Core ID Cards are available in 6 colors to categorize your materials



10 Pack Colors

- ID10B Blue
- ID10G Green
- ID10M Mustard
- ID10O Orange
- ID10T Turquoise
- ID10Y Yellow

ID12A
12 Pack Asst colors
2 of Each Color



Sooper-Strap^{SS18}

What a great Idea!



- Keep your material neat, safe, organized
- Faster and Easier than tape, Rubber bands & Paper Clips, Etc



1 1/4" x 18"



Part#	Description
SS18	18" Sooper Strap
SS18B	18" Sooper Strap BULK 350 pc Case

MEDIA RACKS



1" QUICK RELEASE CLAMP

- Universal Quick-Release Locking Clamp
- Aluminum Gold Anodized
- Use on any 1" Shaft



QRC256
QRC256B (10 pcs)

MORE INFO: (888) 679-5175 | sales@gsswf.com | www.gsswf.com



- Portable Heavy solid steel
- Easy To Use - Includes #3 Die
- Includes 250 Clear Grommets FREE
- Cuts Hole and Sets Grommets in One Easy Motion
- Other Die Sizes Available
- For PVC Banners & Corrugated Plastic



CLEAR, BLACK & WHITE GROMMETS



 #1 8mm Plastic CLEAR GROMMET GRM1C	 #1 8mm Plastic WHITE GROMMET GRM1W	 #1 8mm Plastic BLACK GROMMET GRM1BLK	 #3 12mm Plastic CLEAR GROMMET GRM3C	 #3 12mm Plastic WHITE GROMMET GRM3W	 #3 12mm Plastic BLACK GROMMET GRM3BLK
 #3 12mm Plastic CLEAR LONG BARREL GROMMET GRM3LBC	 #3 12mm Plastic WHITE LONG BARREL GROMMET GRM3LBW	 #3 12mm Plastic BLACK LONG BARREL GROMMET GRM3LBBLK	 #4 16mm Plastic CLEAR GROMMET GRM4C	 #4 16mm Plastic WHITE GROMMET GRM4W	 #4 16mm Plastic BLACK GROMMET GRM4BLK

DIES FOR CLEAR, BLACK & WHITE GROMMETS

Die #1 for Mano Hand Press (8mm) PDMA1	Die #3 for Mano Hand Press (12mm) PDMA3	Die #4 for Mano Hand Press (16mm) PDMA4
--	---	---

DIES FOR METAL GROMMETS

Die #0 for Mano Hand Press Metal Grommet MDMA0	Die #1 for Mano Hand Press Metal Grommet MDMA1	Die #2 for Mano Hand Press Metal Grommet MDMA2	Die #3 for Mano Hand Press Metal Grommet MDMA3
--	--	--	--

MORE INFO: (888) 679-5175 | sales@gsswf.com | www.gsswf.com

METAL GROMMETING TOOLS & GROMMETS

Sooper Ace

- Portable Heavy Duty Cast Iron
- Includes #2 Die
- Easy To Use
- Cuts Hole and Sets Grommets in One Easy Motion
- Other Die Sizes Available



GRMBUFACE

ACE IN THE HOLE METAL GROMMETS

 #0 1/4" Self Piercing BRASS GRM0SPB	 #1 5/16" Self Piercing BRASS GRM1SPB	 #1 5/16" Self Piercing NICKEL GRM1SPN	 #2 3/8" Self Piercing BRASS GRM2SPB	 #2 3/8" Self Piercing NICKEL GRM2SPN
 #2 3/8" Self Piercing BLACK GRM2SPBLK	 #2 3/8" Self Piercing XLong Barrel BLACK COPPER GRM2SPXLBLKC	 #2 3/8" Self Piercing Long Barrel BRASS GRM2SPLBB	 #2 3/8" Self Piercing XLong Barrel BRASS GRM2SPXLBB	 #2 3/8" Self Piercing XLong Barrel NICKEL GRM2SPXLBN
 #3 7/16" Self Piercing BRASS GRM3SPB	 #3 7/16" Self Piercing NICKEL GRM3SPN	 #4 5/8" Self Piercing BRASS GRM4SPB	 #4 5/8" Self Piercing NICKEL GRM4SPN	<p style="text-align: center;">LOOKING FOR A SPECIAL GROMMET? LET US HELP!</p>

DIES FOR METAL GROMMETS

Die #0 for Ace Grommet Press  GRMBD0	Die #1 for Ace Grommet Press  GRMBD1	Die #2 for Ace Grommet Press  GRMBD2	Die #3 for Ace Grommet Press  GRMBD3
--	--	---	--

* Work on Sooper Ace Grommet Press & Econo Air Grommet Press

MORE INFO: (888) 679-5175 | sales@gsswf.com | www.gsswf.com

GROMMETS & MACHINES

20

CLEAR GROMMET COMBO KITS

Convert your grommet machine to Clear Grommets

SOOPER ACE COMBO KIT



Sooper Ace Combo Pack
Includes Replacement Die
Plus 500 #3 Clear Grommets
3 lbs

PDSA3C
PDSA3 Die Only

STIMPSON COMBO KIT



STIMPSON Combo Pack
Includes Replacement Die
Plus 500 #3 Clear Grommet
3 lbs

PDST3C
PDST3 Die Only

HIKER COMBO KIT



HIKER Combo Pack
Includes Replacement Die
Plus 500 #3 Clear Grommets
3 lbs

PDHI3C
PDHI3 Die Only

FASNAP COMBO KIT



Cast Iron
FASNAP-Cast Iron Combo Pack
Includes Replacement Die
Plus 500 #3 Clear Grommets,
3 lbs

PDFNC13C
PDFNC13 Die Only

FASNAP COMBO KIT



Aluminum
FASNAP Aluminum Combo Pack
Includes Replacement Die
Plus 500 #3 Clear Grommets
3 lbs

PDFNAL3C
PDFNAL3 Die Only

MANO COMBO KIT METAL GROMMETS



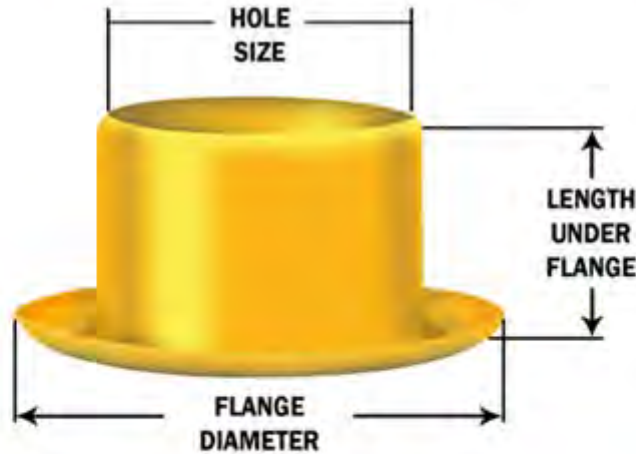
Convert
Clear Grommet Press
to Metal Grommet Press

- Kit includes:
- Die #2
 - 500 #2 Grommets (GRM2SPB)

MDMP2C

SOOPER ACE METAL GROMMET SIZE GUIDE

For the ImageOne Impact[®] Sooper Ace[™], Stimpson[®] Micron[®] and Fasnap[®] grommet presses



Grommet Size	Hole Size		Flange Diameter		Length Under Flange	
	Inches	MM	Inches	MM	Inches	MM
#0	1/4"	6	9/16	14	3/16	4.5
#1	5/16"	8	5/8	16	1/4	6
#2	3/8"	9.5	11/16	17.5	1/4	6
#2 Long Barrel	3/8"	9.5	11/16	17.5	5/16	8
#2 XLong Barrel	3/8"	9.5	3/4	19	1/2	12.7
#3	7/16"	11	1	25	1/4	6

#2 HIKER DIE FOR METAL GROMMETS

Allows you to use standard #2 Metal Grommets



#2 STIMPSON DIE FOR METAL GROMMETS

Allows you to use standard #2 Metal Grommets



Be Sure to Check Out Our Adhesive Products Section Beginning on Page 12



- Economical Pneumatic Grommet Press works with your Air Compressor
- Easy to Use and Move around your Shop
- Powerful and Compact Foot Pedal Operated Makes Setting Grommets Easy
- Hands-Free Foot Pedal Activation
- Adjustable Pneumatic Pressure Level Operates at 145 PSI

BEST VALUE



ECONO

DIES FOR METAL GROMMETS

Die #0
for Ace
Grommet
Press



GRMBD0

Die #1
for Ace
Grommet
Press



GRMBD1

Die #2
for Ace
Grommet
Press



GRMBD2

Die #3
for Ace
Grommet
Press



GRMBD3

* Work on Sooper Ace Grommet Press & Econo Air Grommet Press



**SEMI AUTOMATIC BENCH MOUNT
FOOT PEDAL OPERATED**

- Pneumatic foot press
- Will set Snap Fasteners - Rivets - Grommets up to #3
- Uses same dies as standard Hand Press
- Throat depth 4"
- Laser Light for accurate setting
- 110V power
- Min PSI 75 - Max 145 PSI
- Can use any small air compressor
- 20" x 20" x 20" - Aprox 39 Lbs - Can ship UPS



SAPF

PNEUMATIC FOOT PRESSES

STAND-UP VERSION

Pedestal Included

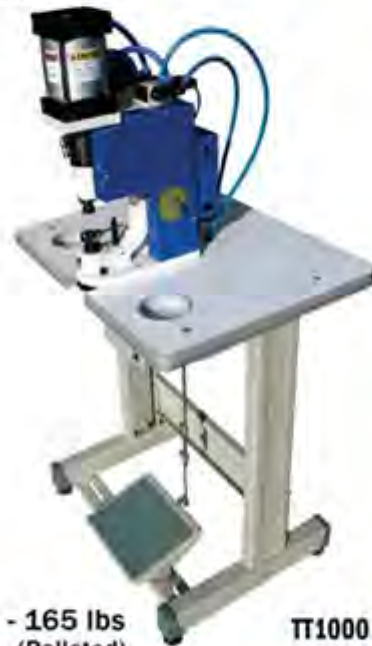


SU1000

• 40" x 40" x 70" - 205 lbs
(Palletted)

TABLE-TOP VERSION

Table Included



TT1000

- Comes with #2 Die (optional dies available 0, 1, 2, 3, 4)
- Easy to use Light weight
- Hand Free, so operator can grip work
- Comfortable design allows for EZ operation
- Laser light targets the center position for accurate and EZ grommets placement
- Safety guard sensor stops the press if fingers or other objects interfere with the die
- 110V

Applications:

- Banners
- Signs
- Marine
- Flags
- Tarpaulins
- Covers
- Automotive
- RVs - Plus...



• 42" x 48" x 60" - 165 lbs
(Palletted)

PRO-MATIC DIES



Die #0



Die #1



Die #2



Die #3



Die #4

Part#	Description
FSND0	Pro-Matic Die #0
FSND1	Pro-Matic Die #1
FSND2	Pro-Matic Die #2
FSND3	Pro-Matic Die #3
FSND4	Pro-Matic Die #4

MORE INFO: (888) 679-5175 | sales@gsswf.com | www.gsswf.com

FULLY AUTOMATIC GROMMET MACHINE



- Fully automatic foot pedal operated
- Increase Productivity and reduce cost
- Can be set up to run and feed self piercing grommets or snap fasteners
- Can attach roughly 90 times per minute
- Reduce operator fatigue
- Set up for customer application



FEATURES:

- Adjustable gauge table
- Adjustable finger guard
- Adjustable lower die
- Laser target light
- Manual cycle feature
- Applicable grommets: 0 - 2
- Hands free
- 110V power

SPECS:

- 42" x 48" x 66"
- 400 Lbs
(Palletted)
- 90 day Delivery Time

GSM6F



**The Fastest
Easiest and
Most Affordable
way to Round
Corners**

- Includes 1/4" and 3/8" interchangeable radius blades
- Cuts Up to .080 Aluminum
- Up to 1" Card Stock, Plastics, Magnetic sheets and More...
- Heavy Duty Cast Iron Base
- Drop down foot holds material in place while cutting

SR3000

REPLACEMENT DIE SETS AVAILABLE

1/8" - 3/16" - 1/4" - 3/8" & 1/2"

Sets Includes: Radius Base + Cutter Blade

Radius base



Cutter Blade



Part#	Description	
SRDC18	1/8"	Cutter Blade + Radius Base
SRDC36	3/16"	Cutter Blade + Radius Base
SRDC14	1/4"	Cutter Blade + Radius Base
SRDC38	3/8"	Cutter Blade + Radius Base
SRDC50	1/2"	Cutter Blade + Radius Base



Help!

**WE KNOW WHAT IT FEELS LIKE
TO NEED HELP...**

**IF YOU HAVE A QUESTION
OR YOU ARE NOT SURE WHAT
PRODUCT TO RECOMMEND,**

**JUST PROMISE US
ONE THING...**

**YOU WILL CALL US!
OR SEND US AN EMAIL!**



We have the Answers to all your product, uses and pricing questions!

(888) 679-5175

sales@gsswf.com | www.gsswf.com

MORE INFO: (888) 679-5175 | sales@gsswf.com | www.gsswf.com

Sooper Edge

The ULTIMATE Safety Ruler

The Sooper Edge is the premier safety ruler in the sign and graphics industry



More Features & Benefits than any other Safety Ruler!

- Made of heavy duty aluminum construction
- Polished and anodized
- Non-slip grip on the bottom
- Excellent curved finger guard
- Laser etched graphics and measurements
- Inserted stainless steel edge to eliminate cutting into the ruler
- Channel on back to hold cutting head so all sizes make perfectly straight cuts the entire length

Standard Sizes

Metric Sizes

Part#	Description	Part#	Description
ESL28	28" Safety Ruler	ESL28M	71.1 cm Safety Ruler
ESL40	40" Safety Ruler	ESL40M	101.6 cm Safety Ruler
ESL52	52" Safety Ruler	ESL52M	132.1 cm Safety Ruler
ESL64	64" Safety Ruler	ESL64M	162.6 cm Safety Ruler
ESL76	76" Safety Ruler	ESL76M	193 cm Safety Ruler
ESL96	96" Safety Ruler	ESL96M	243.8 cm Safety Ruler
TS15BLK	Black T-Square	TS15BLKM	Black T-Square Metric
WC6001	Cutting Head	WC6001	Cutting Head

Optional

ADJUSTABLE
T-SQUARE
THE BEST. JUST GOT BETTER.



Works on Sooper Edge Ruler and The Big Blue Ruler

TS15BLK

Optional Cutting Head



Works on Sooper Edge Ruler and The Big Blue Ruler

WC6001
WC20
Replacement Blades

The Big Blue

safety ruler

Big Blue Safety Ruler is the one choice for the finishing room



More Features & Benefits than any other Safety Ruler!

- Made of heavy duty aluminum construction
- Polished and anodized
- Non-slip grip on the bottom
- Excellent curved finger guard
- Laser etched graphics and measurements
- Channel on back to hold cutting head so all sizes make perfectly straight cuts the entire length

Standard Sizes

Metric Sizes

Part#	Description	Part#	Description
ECSL28	28" Safety Ruler	ECSL28M	71.1 cm Safety Ruler
ECSL40	40" Safety Ruler	ECSL40M	101.6 cm Safety Ruler
ECSL52	52" Safety Ruler	ECSL52M	132.1 cm Safety Ruler
ECSL64	64" Safety Ruler	ECSL64M	162.6 cm Safety Ruler
ECSL76	76" Safety Ruler	ECSL76M	193 cm Safety Ruler
ECSL96	96" Safety Ruler	ECSL96M	243.8 cm Safety Ruler
TS15BLK	Black T-Square	TS15BLKM	Black T-Square Metric
WC6001	Cutting Head	WC6001	Cutting Head

2" Non-Slip Grip Tape 50ft roll



DRTAPE2ROLL

Sooper Six Ruler

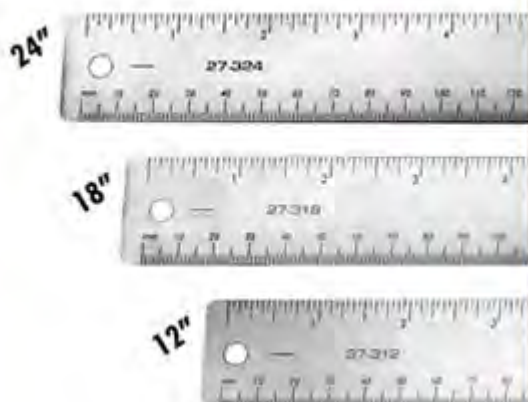


SSX

X-TREME HD

Stainless Steel Rulers

- Come in three styles and three lengths
- Available three lengths 12" - 18" - 24"
- Plain back standard,
- Cork back for non-slip stability,
- Magnetic back for vehicles.



**3 sizes Each
in Plain, Cork or
Magnetic back**



Part#	Description
F27312PL	12" Plain Scale
F27318PL	18" Plain Scale
F27324PL	24" Plain Scale

Part#	Description
F27312	12" Cork Back Scale
F27318	18" Cork Back Scale
F27324	24" Cork Back Scale

Part#	Description
F27312M	12" Magnetic Back Scale
F27318M	18" Magnetic Back Scale
F27324M	24" Magnetic Back Scale

X-TREME HEAVY DUTY ALUMINUM STRAIGHT EDGE "FOUR PACK"

*** A size for
every Job!**



Set includes: 4', 5', 6' and 8', lengths

XJ4PAK

COMPLETE WEEDING KIT

- Strong Stainless Steel tips
- Chrome Handles
- Five different angles for picking and weeding anything
- Cast, Calendered, Heat Transfer & more...



CWK

MORE INFO: (888) 679-5175 | sales@gsswf.com | www.gsswf.com

PRO-Roll Tape Applicator



Recommended by: **TransferRite**



Look at these Great Quality Features:



The PRO-Roll is available in 2 sizes. Each size works with widths up to that size tool.

- No more wrinkles when applying.
- Change to a new roll in seconds.
- Works with any brand, paper weight and tack level of application tape.

Adding/Changing a tape roll is as easy as 1-2-3



PRO-Roll 12" - tapes from 3" to 12" **TA12**
 PRO-Roll 24" - tapes from 3" to 24" **TA24**

PRO-TableTop Applicator

Mount to your existing work table



Work with most roll goods



- Mount to your existing work table
- Adjust to your desired width
- Secure brackets to your table top
- We suggest 1" aluminum tubing
- Tubing NOT included
- Works with most roll goods vinyl - transfer tape - etc

KIT INCLUDES



- 2 Mounting Brackets
1 - Left Hand - 1 - Right Hand
- 6 1" Quick Release Clamps
- 6 1" End Cap
- 6 3" Core Plugs

PTA1000



Quick Release Clamps

QRC256B (10 pack)

**NEW
PRODUCT**

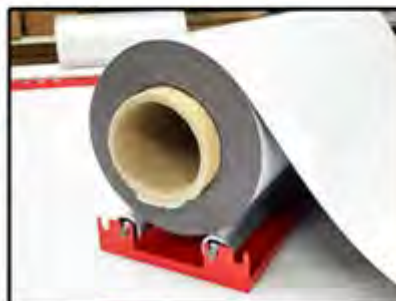
MINI ROLLER ASSEMBLY



▶ **STICKER ROLLS**

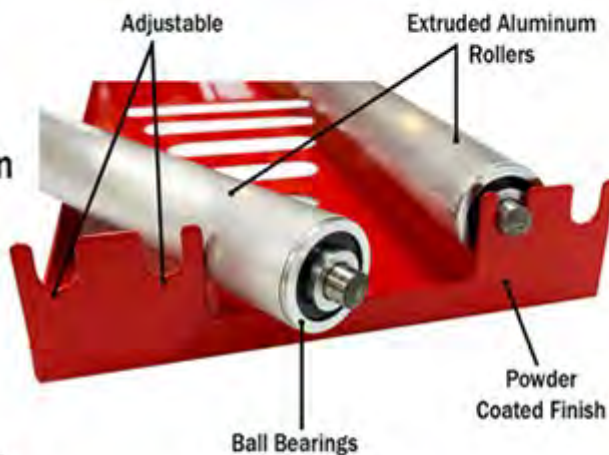


▶ **MEDIA ROLLS**



▶ **MAGNETIC ROLLS**

- ▶ Universal for Crafters & Shops
- ▶ Precision Made / High Quality
- ▶ Powder Coated Finish
- ▶ Ideal Addition to Any Work Station
- ▶ Full Width Dual Adjustable Extruded Aluminum Rollers with Ball Bearings
- ▶ Sturdy Platform 24"
- ▶ Will Handle Most Media Rolls
- ▶ Works Great with Desktop Cutters



Dimensions: 8" x 4" x 26" - 6 LBS

As Many Uses You Can Imagine...

MR24

MORE INFO: (888) 679-5175 | sales@gsswf.com | www.gsswf.com

SHOP TOOLS / SUPPLIES

30



SIMPLY THE BEST COUNTER TOP CUTTING MAT

- Protect Your table Top
- Cutting Blades Last Longer
- Made From Virgin High Impact Polymer Blend
- Sooper Tough



OLFA Knives Recommended

- SVR-1 • SVR-2 • SAC-1 • XA-1 • PA-2 • AK-4 • 180 • DA-1

GRID KITS

Available for
Cutting Mats up to
6' x 12'



Part#	Size	Inches / Description
CM1824P	1.5' x 2'	18" x 24" Printed
CM2448	2' x 4'	24" x 48" Unprinted
CM2448G	2' x 4'	24" x 48" 1 Grid
CM48	4' x 8'	48" x 96" Unprinted
CM48G	4' x 8'	48" x 96" 1 Grid
CM410	4' x 10'	48" x 120" Unprinted
CM410G	4' x 10'	48" x 120" 2 Grid
CM412	4' x 12'	48" x 144" Unprinted
CM412G	4' x 12'	48" x 144" 2 Grid
CM58	5' x 8'	60" x 96" Unprinted
CM58G	5' x 8'	60" x 96" 2 Grid
CM510	5' x 10'	60" x 120" Unprinted
CM510G	5' x 10'	60" x 120" 3 Grid
CM512	5' x 12'	60" x 144" Unprinted
CM512G	5' x 12'	60" x 144" 3 Grid
CM610	6' x 10'	72" x 120" Unprinted
CM610G	6' x 10'	72" x 120" 3 Grid
CM612	6' x 12'	72" x 144" Unprinted
CM612G	6' x 12'	72" x 144" 3 Grid

TABLE FRAMES



TBLF
(Shown with 5'x10'
Table Top NOT Included)

ALUMINUM FRAMES, MOBILE WITH HD LOCKING WHEELS

- 4' x 8' Base Frame with HD Locking Wheels
- Sooper Strong Precision Fit Aluminum Extrusion
- Use Top Size of your Choice
- Perfect Production Height of 34 inches
- EZ to Assemble - Tools and Instructions Included



TBLAB48

Adjustable
Shelf Bracket 48"

Ship: Fedex - UPS
Shipping Weight:
82lbs - Box Size: 49" x 12" X 8"



TBLF



TBLHNDLRMT
Table Top Handler Mount



See page 44
for more info.

	Description
TBLF	4' X 8' Aluminum Table Frame
TBLHNDLRMT	Table Top Handler Mount
TBLAB48	Adjustable Shelf Bracket 48"

MORE INFO: (888) 679-5175 | sales@gsswf.com | www.gsswf.com

Mobile Multi Use
Table Frames



JUST ADD THE TOP
OF YOUR CHOICE



- 2' x 4' Base Frame with HD Locking Wheels, Sooper Strong
- Sooper Strong Precision Aluminum Extrusion
- Use Top Size of your Choice
- Perfect Production Height of 34 inches
- Ideal for Worktable - Tool Carrier - Flat Beds Plotters
Laminators, etc.
- EZ to Assemble - Tools and Instructions Included

Ship: Fedex - UPS

Shipping Weight: 40lbs - Box Size: 49" x 8" X 7"



TBLAB24

Adjustable Shelf
Brackets 24"
not included.

TBL2448

TBLAB24

SUG

ALUMINUM SQUEEGEES

- Light weight aluminum construction
- Use for small and large applications
- Great for large format installs on windows - vehicles and any large surface window - walls - floors etc.
- Available in 6 sizes up to 50" wide
- Sooper - Glide felt edges for smooth application with no harm to sign or substrate
- Comes with threaded handle
- Great for use with installation of floor and wall graphics



* SOLD INDIVIDUALLY OR VALUE PACKS

Part#	Description
SQAL08	8 inch Aluminum squeegee
SQAL14	14 inch Aluminum squeegee
SQAL20	20 inch Aluminum squeegee
SQAL26	26 inch Aluminum squeegee
SQAL38	38 inch Aluminum squeegee
SQAL50	50 inch Aluminum squeegee
SQAL5PAK	5-PAK Includes: 8", 14", 20", 26", 38" Alum. Squeegees
SQAL6PAK	6-PAK Includes: 8", 14", 20", 26", 38", 50" Alum. Squeegees

ALUMINUM HD LINER CUTTER

- Precision Hand-Held Cutter
- Uses standard single edge razor blade
- Simple Blade Depth adjustment
- Controls the depth of cut
- Blade can be mounted on either side for Right hand or Left hand use



650506
(Blades 100-Pak)

MORE INFO: (888) 679-5175 | sales@gsswf.com | www.gsswf.com

GRAPHIC
SUPPLY SOURCE

**THE BIG BLADE JUMBO SIZE
PLASTIC RAZOR BLADE**

- Safe, Strong, plastic DOUBLE EDGED BLADE
- Functionally designed with a solid back for both strength and flexibility.
- Formulated to withstand the effects of the removal fluids used in the marketplace
- Size: 3" x 4"

**Chemical Resistant
Flexible Blue**

**Original
Firm Green**



**Chemical Resistant
Rigid Pearl**

Part#	Description
BBFIRM	Big Blade Removal Tool- Firm - Green
BBCRF	Chemically Resistant Big Blade-Flexible - Blue
BBCRR	Chemically Resistant Big Blade-Rigid - Pearl

**QUATRO
BRAYER**

4"



- 4" Heavy duty Roller Brayer
- Comfortable handle easy to use
- Perfect for applying banner hem tapes



QUATRO

LIL' CHIZLER

The Lil' Chizler's unique design enables it to remove stickers and vinyl letters easily. Great for small installs of Vinyl Graphics or removing old vinyl decals. Approximately 2.25"x3".



LILCHZL



SOOPER TACK
ROLLERS

Removes Dust Fast!

Removes Every Spec of Unwanted Dust and other Particles from Surfaces before Printing, Laminating or Applying Graphics

Available in 3 tack levels

A Must For Every Shop!



Each kit includes:

- 1 Tack Roller
- 1 pad of 50 cleaning sheets

CLEANING PADS



CP50 1 Pad • CP50B Box of 5 Pads

Part#	Description
DR12ALT	12" Low Tack Dust Removal Kit
DR12AMT	12" Med Tack Dust Removal Kit
DR12AHT	12" High Tack Dust Removal Kit
CP50	Cleaning Pad of 50 sheets, 9" x 13"
CP50B	5 Pads Per Box

MORE INFO: (888) 679-5175 | sales@gsswf.com | www.gsswf.com

WRAP KIT PRO

Used by professional wrap shops all over the world!
Our selection of products are designed to last longer
and are the right set of tools for the installer.

KIT INCLUDES:

- Wet Edge Squeegee
- Wrap Glove (1 pair size large)
- 4" Standard Orange Squeegee
- 4" Gold Nylon Blend Squeegee
- Wrap Cut Liner Cutting Knife
- Retractable Bubble Popper - .030
- Emblem Removal Tool with 100 cutting cords
- Wrap Pro Tuck & Groove (7) Piece Tool Kit
- Ultra Slim Cutter
- The Gray/Black Tool Pouch
- Xtreme Magz 6-pak w/ring handles
- 5" White Plastic Squeegee
- Blade Disposal Can
- Installers Rivet Wheel
- Rivet Brush
- Infrared Thermometer with Laser
- Dual Temperature Heat Gun Kit
- Window Perf Gap Knife with Twin Parallel Blades
- Auto Lock Stainless Steel Professional Knife
- HD Box Chair
- Rollepro Applicators
- Moulding Removal Tools - 11 piece set



Every installer
needs this kit!

WKIT3

WRAP KIT Student

KIT INCLUDES:

- Wet Edge Squeegee
- Wrap Glove (1 pair size large)
- 4" Standard Orange Squeegee
- 4" Gold Nylon Blend Squeegee
- Wrap Cut Liner Cutting Knife
- Retractable Bubble Popper - .030
- Emblem Removal Tool with 100 cutting cords
- Wrap Pro Tuck & Groove (7) Piece Tool Kit
- Ultra Slim Cutter
- The Gray/Black Tool Pouch
- Xtreme Magz 6-pak w/ring handles
- 5" White Plastic Squeegee
- Blade Disposal Can
- Installers Rivet Wheel
- Rivet Brush
- Infrared Thermometer with Laser
- Dual Temperature Heat Gun Kit
- Window Perf Gap Knife with Twin Parallel Blades



WKIT2

WRAP KIT Beginner

KIT INCLUDES:

- Wet Edge Squeegee
- Wrap Glove (1 pair size large)
- 4" Standard Orange Squeegee
- 4" Gold Nylon Blend Squeegee
- Wrap Cut Liner Cutting Knife
- Retractable Bubble Popper - .030
- Emblem Removal Tool with 100 cutting cords
- Wrap Pro Tuck & Groove (7) Piece Tool Kit
- Ultra Slim Cutter
- The Gray/Black Tool Pouch
- Xtreme Magz 6-pak w/ring handles



WKIT1



The Benefits of a "WetEdge" Squeegee:

- True Professionals use the Wet Edge!
- Teflon edge glides and cuts across media easier than the standard squeegee.
- By applying water to the Wet Edge side, it allows squeegee to glide over media without scratching laminate. It also reduces friction.

As Recommended By



WetEdge Squeegee WES

MORE INFO: (888) 679-5175 | sales@gsswf.com | www.gsswf.com

VEHICLE WRAP TOOLS

4" Squeegee Brayer Combo Tool



4" Felt Blocks



4" Gold Nylon Blend Squeegee



4" & 6" Plastic with Felt Squeegee



4" Teflon Squeegee



4" Silver Nylon Squeegee



4" Soft Flex Squeegee



12" Squeegee



4" Felt Buffers Self-adhesive



4" Standard Orange Squeegee



SQUEEGEE SHARPENER

- Increase Your Squeegee life
- Maintain Crisp edges



SQSHARP

12" Rubber Blade Squeegee



EZ REACH ULTRA

Designed specifically to get at the corners of quarter glass windows, you'll also reach for it again and again to put down those little corners of film in hard to access areas.



SQEZR

LIL' CHIZLER

The Lil' Chizler's unique design enables it to remove stickers and vinyl letters easily. Great for small installs of Vinyl Graphics or removing old vinyl decals. Approximately 2.25"x3".



LILCHZL

GATOR BLADE

- Sharp but won't scratch the surface
- Safer and easier to use than razors
- Installers - Applicators and Detailers choice



SQGATOR

ROLLEPRO

ROLLEPRO applicators are designed to roll over vinyl covered rivets and contours in seconds. The RollePro's ergonomic design and specially formulated, heat resistant wheel brings speed and comfort to the once time-consuming application process.

The faster, safer, easier way to apply vinyl film over rivets.



RPRO
RPRORW Replacement Wheel



Textured Surface Kit



KIT INCLUDES:

- Standard Handle
- Original Wheel
- High Temperature Wheel
Can be used on variety of surfaces including Brick and Concrete

RPROWK Kit
RPROW Replacement Wheel
RPROHTW Replacement High Temperature Wheel

Hot Shot

• INFRARED HEATING UNIT •

- VEHICLE WRAPS • COLOR CHANGE
- RESTYLING • REMOVALS
- INSTALLATIONS • PRE AND POST HEATING
- COMES WITH AN EZ TO ADJUST ROLLING STAND
- SPEEDS UP YOUR INSTALLATIONS



NEW

- SPRING LOADED PIN FEATURE FOR ADJUSTING HEIGHT
- NEW LARGER CASTERS FOR ENHANCED MOBILITY



- 18" Head moves Vertical + Horizontal
- Adjust Up + Down
- 1000 watt Short Wave Halogen
- Instant on heat
- Includes rolling stand



Head tilts Up or Down

Horizontal or Vertical



Adjustable timer
Up to 60min

HS1000X

- Replacement Bulb - HS1000XBULB



- 36" Head Horizontal use only
- Adjust Up + Down
- 1500 watts Med Wave Quartz Element
- Includes rolling stand



On/Off Switch



HS1500

- Replacement Bulb - HS1500BULB
- Euro Model HS1500EURO

Please specify Euro, UK or Australia Plug Required

- Replacement Bulb Euro Model - HS1500EURBULB



- 35" Head Horizontal Use Only
- Adjust Up + Down
- 1650 watt Short Wave Halogen
- Instant on heat
- Includes rolling stand



Horizontal or Vertical



Adjustable timer
Up to 60min

HS1650X

- Replacement Bulb - HS1650XBULB
Euro Model HS1650XEURO

Please specify Euro, UK or Australia Plug Required

- Replacement Bulb Euro Model - HS1650XEURBULB



- 36" Head moves Vertical + Horizontal
- Adjust Up + Down
- 2000 watts Medium Wave Quartz Element
- Includes rolling stand



Adjustable timer
Up to 60min



Head tilts Up or Down

Horizontal or Vertical

HS2000X

- Replacement Bulb - HS2000XBULB
Euro Model HS2000XEURO

Please specify Euro, UK or Australia Plug Required

- Replacement Bulb Euro Model - HS2000XEURBULB

STAND REPLACEMENT



HSSTAND

REPLACEMENT BULBS

Part#	Description
HS1000XBULB	Bulb For HS1000X
HS1500BULB	Bulb For HS1500
HS1500EURBULB	Bulb For HS1500EUR
HS1650XBULB	Bulb For HS1650X
HS1650XEURBULB	Bulb For HS1650XEUR
HS2000XBULB	Bulb For HS2000X
HS2000XEURBULB	Bulb For HS2000XEUR



VEHICLE BODY MOLDING REMOVAL TOOLS

5 pc kit



- Excellent Basic Kit
- 5 Distinctive Tools for easy removal of body fasteners
- Ideal for vehicle wrap-paint protection installation shops

MOLD5

VEHICLE BODY MOLDING REMOVAL TOOLS

11 pc kit



- Deluxe 11 piece HD-Removal Kit with canvas storage case
- All necessary tools to remove door panels, trim trips, body building and interior panels
- Plastic tools will not mar or scratch surfaces
- All the tools you need to get the job done right and fast

MOLD11

BODY CLIP SET

3 pc kit

- Works with almost any door using push pins or panel clips
- Remove push pins with center locking pin
- Removes plastic anchors that have center pins without damage the pins or anchors



BC3

THE MAGNET TOOL POUCH

Every aspect of this small gray and black Magnetic Pro Wrap Tool Pouch was build around the features vehicles wrap installers need to work efficiently

- 10-pocket tool pouch made from a heavy-weight Oxford polyester
- 2-small pouches inside main pouch and 2 more pouches outside
- 5 Knife Pockets
- Quick-clip strap to hold your wrap tapes
- Snap close large pocket
- 2 Sewn in metal plates for magnets
- Multifunctional carrying option
- Measures 9.5" x 9.5" with open pocket depth of 6"



TPOUCH4

THE HANDLER - VEHICLE WRAP & WINDOW TINT FILMS CUTTER



FH72 72" Handler

- Minimize waste and improve efficiencies with Vehicle Wrap Films and Window Tint Films.
- 72" Width
- Used by professional Vehicle Wrap Shops and Window Film Installers
- Reduce waste, and increase speed while cutting down film for installation.
- Both Handlers will cut any width roll up to their maximum width 3" core
- Comes with two adjustable cutting heads for slitting to your desired width.

Table Frame Mount

UNIVERSAL MOUNT BRACKET



Fits 60" & 72" Handler

TBLHNDLRMT

Mounting Options:



Ladder Mount



Rivet Wheel

- Unique design
- Put air release holes into an entire strip of rivets
- Makes big rig trailer install much faster and easier



RW

THE TAPE THING

- Magnetic Tape Holder
- 2 different sizes 3/4" & 1.5"



TTHING75
TTHING150



rivet brush



- Makes installing vinyl over rivets easier
- Made of stiff bristle synthetic fiber
- Helps form flexible vinyl over the Rivet surface



RB

SOOPER CHAIR - HD BOX

- HD steel construction W 3" full bearing wheels
- Padded seat cushion for comfort
- 3-Drawer toolbox with roller bearing slides
- Keeps your tools handy



Overall Size:
18.5" H x 14" W
x 18-1/4" D
Weight: 27 lbs.

SCHDBOX

SOOPER CHAIR - ERGO

- The first of its kind to give you complete ergonomic comfort
- The weird, but remarkable, kneeling wrap chair won't slide around while wrapping and installing.
- This is the most comfortable wrap chair in the country.



• Weight - 8.5 Lbs
• Weight Capacity
300 lbs.
Seat Adjusts vertically 11 1/2"
to 15 1/2" in height

SCERGO

Xtreme MAGZ

YOUR Xtreme HAND™

- A Must for Every Shop and Installer
- Make Applying Vinyl and Wraps EZ
- Large 1 5/8" Diameter Sooper Soft Rubber Coating Will NOT Harm Your Graphics or Substrates
- Bright Neon Colors Make them EZ to Locate
- Use in Place of Masking Tape to Position Graphics



XMH6
(6 pack)



- Low Profile
- With a Ring for an easy pull off

XM6
(6 pack)
Low Profile

SUG

MEGA MAGZ



- 3.5" Black Rubberized base
- Super Smooth to resist dirt collection
- Offers 50 + Lbs of pull anchoring force
- 5.25" Long comfort grip rubber handle
- EZ to use will not harm your surface
- "Mega Magz" are faster, safer and easier

Single Pak MM1

HEAT GUN HOLDER

- Extra Strong Magnet
- Black Rubberized
- Super Smooth to resist dirt collection



HHMAG

LOW PROFILE

Vehicle Wrap Magnets

- Bright Yellow "Low Profile" Magnets EZ to find
- Awesome for vehicle wraps and graphic installs
- Use individually or in line for a hinge method
- 28 Lbs. of pull each will hold up almost anything
- Completely rubber coated will not harm your surface



XM6 (2 pack)



The **ORIGINAL** N' ONLY ONE
When Squeegees aren't enough...

- A unique blend of fibers that has taken years to develop
- They don't shed any lint or fibers on your adhesive
- They don't transfer your skin's oils
- They can be used to handle the adhesive side of digital and wrap films
- Reduce/remove friction when hand cutting vinyl
- This is what makes the Wrap Glove the glove of choice for the wrap industry

Faster, easier wraps and digital media work, guaranteed!
Created by Professionals...For Professionals.



(1 pair)



Part#	Description
WG1S	1 Pair - Size: Small
WG1M	1 Pair - Size: Medium
WG1L	1 Pair - Size: Large
WG1XL	1 Pair - Size: XLarge

**Check it
Out!**

Our Expanded Line of
PERSONAL PROTECTION PRODUCTS

Beginning on Page 56

WRAP KNIFE

- Made specifically to cut through just the liner of any pressure sensitive vinyl films.
- This knife will cut through only the paper backing of a self-adhesive vinyl.
- Made with a solid steel shaft and special coating on the bottom surface
- Replacement blades available.



10-Blade Replacement Pack **WCKNIFE**
WCBLADE10

TWIN WRAP KNIFE

- Same as the Standard Wrap Cut Knife but has two cutting blades
- The Twin Blades cut a 7/8" strip of liner for easy Application



10-Blade Replacement Pack **WCKTWIN**
WCBLADE10

EMBLEM REMOVAL TOOL

- ER-1 Emblem Removal Tool comes with a set of brightly colored custom designed ergonomic handles.
- The cutting cord allows you to cut through automotive grade adhesives used on many vehicle's emblems and logos without risk of damaging a vehicle's paint or the emblem itself.
- Replacement cutting cords are sold in 100-paks



ER1
100 Cords Pack **ERC100**

WRAP PRO TUCK & GROOVE TOOL KIT

- 7-piece tool kit
- Gets under any vehicle's rubber gasket seal or window moulding
- Also for getting in between body panels deep crevices and tight spots
- Great for vehicle wrap and color change



TG7



INFRARED THERMOMETER WITH LASER



- Measurement Range: -60 to 550 °C (-76 to 1022 °F)
- Operating Range: 0 to 50 °C (32 to 122 °F)
- Resolution (-9.9 to 199.9 °C): 0.1 °C/0.1 °F, otherwise 1 °C/1 °F
- Response Time (90%): 1 sec
- 12:1 Distance to Spot Size
- Battery Life: Typ. 18, min 14 hours continuous use

IRGATD

DUAL TEMPERATURE HEAT GUN KIT



- Two Heat Settings: 700 °F & 925 °F
- Watts - 1000 Low/1500 High
- Three Position Rocker Switch; High/Off/Low
- UL & CUL Listed

HGDT

DIGITAL VARIABLE TEMPERATURE HEAT GUN KIT

- High and Low settings each have 6 temp. settings - 12 heat settings total
- Total temperature range from 250°F to 1200°F
- Watts - 1500
- LED Display clearly indicates level of heat emitting
- Patented 80 second automatic cool air flow to prevent accidental burns and to extend life of heating element
- Kit includes four tips and plastic case



HGDVT

INSTALLERS PEN

Adhesive Primer Applicator Tool

All vehicle wrap professionals know that primer 94 is a must to ensure the longevity and durability of a vehicle graphic. Applying Primer 94 can be a time-consuming and often messy task.....until now.



IPEN

SEALITPEN

Here's a fast, simple answer to your edge sealing problems with outdoor and some indoor vinyl applications that require edge protection from washing, polishing, and excessive physical contact.



SEALIT

TWIN WRAP KNIFE

- Same as the Standard Wrap Cut Knife but has two cutting blades
- The Twin Blades cut a 7/8" strip of liner for easy Application
- Made specifically to cut through just the liner of any pressure sensitive vinyl films.
- This knife will cut through only the paper backing of a self-adhesive vinyl.
- Made with a solid steel shaft and special coating on the bottom surface



See page 48
for more info.

WCKTWIN
10-Blade Pack WCBLADE10

ALUMINUM HD LINER Cut Tool

The blade depth adjustment is as simple as using a screw driver, which can control the depth of cut to less than a thousandth of an inch.



See page 34 for more info.

Blades - 650506 100 Pack Dispenser

ALHDLCT

POCKET LINER Cutting Tool

This smartly engineered, innovative tool offers a unique way to cut only the liners of your substrates and not the film.



Blades - LCTB
5 Pack

LCT

ECONOMY LINER Cut Tool

Works by pushing the bottom portion of the tool (in-between liner and adhesive film) and then pushing through to the end of your cutting needs. This tool will continue to slightly separate the liner from the adhesive film but cut only the liner as it is pushed through.



LCTECO

WRAP CUT KNIFE

- Made specifically to cut through just the liner of any pressure sensitive vinyl films.
- This knife will cut through only the paper backing of a self-adhesive vinyl.
- Made with a solid steel shaft and special coating on the bottom surface
- Replacement blades available.



See page 48
for more info.

WCKNIFE
10-Blade Pack WCBLADE10

SNAPPY SAFE CUTTER

One of the most versatile tools ever designed for cutting paper, cloth and plastic films. A great little tool to have around the shop and in your tool box.



SCUT

CORO CUTTER

The best knife for cutting corrugated plastic sheeting.



COROCUT



Standard Duty Cutters

CUTTING TOOLS & BLADES

180 Standard-Duty Cutter

- Features a slide lock, pocket clip and Built in Blade snapper



- Use Standard Duty Blades:

Stainless Steel	Carbon Steel
AB10S (10 PACK)	ABB10B (10 PACK)
AB50S (50 PACK)	ABB50B (50 PACK)

PA2 PRO-LOAD Multi Blade Cutter

- Holds up to 5 blades in a sleek comfortable handle
- Automatic blade load feature and auto-lock blade
- Comes with 3 UltraMaxBlades



- Use Standard Duty Blades:

Stainless Steel	Carbon Steel
AB10S (10 PACK)	ABB10B (10 PACK)
AB50S (50 PACK)	ABB50B (50 PACK)

SAC1 Ultra-Slim Cutter

- The Tool of choice for Sign Making and Graphic Artists
- 30° angle easily cuts foam board, gator board, coroplast, vinyl and more



- Use Blades A1160B (10 PACK)

SVR1 Deluxe Stainless Steel Cutter

- Slim Design, features a slide lock and pocket clip / blade snapper



- Use Standard Duty Blades:

Stainless Steel	Carbon Steel
AB10S (10 PACK)	ABB10B (10 PACK)
AB50S (50 PACK)	ABB50B (50 PACK)

SVR2 Auto Lock Stainless Steel Professional Knife

- For RH & LH users with auto-lock blade, pocket clip and blade snapper



- Use Standard Duty Blades:

Stainless Steel	Carbon Steel
AB10S (10 PACK)	ABB10B (10 PACK)
AB50S (50 PACK)	ABB50B (50 PACK)

XA1 Cushion Grip Standard-Duty Cutter

- Anti-slip cushion grip handle with auto-lock blade Pocket clip and blade snapper



- Use Standard Duty Blades:

Stainless Steel	Carbon Steel
AB10S (10 PACK)	ABB10B (10 PACK)
AB50S (50 PACK)	ABB50B (50 PACK)

AK4 High Quality Precision Knife

- For professionals with HandSaver cushion grip
- Perfectly balanced for right hand and left hand users



- Use Precision Art Blades KB4S5 (5 PACK)
KB4S100 (100 PACK)



Knives Recommended
to protect your Cutting Mat



Heavy Duty Cutters



LAX Auto-Lock HD Cutter

- Features automatic blade lock and a built-in hard metal pick for scoring corrugated plastics, bending and more



- Use Heavy Duty Blades:

Stainless Steel	Carbon Steel	Solid Blades
LB10B (10 PACK)	LBB10B (10 PACK)	LSOL10B (10 PACK)
LB50B (50 PACK)	LBB50B (50 PACK)	

L2 Rubber Grip Insert Utility Knife

- Features a ratchet-wheel blade lock and anti-slip rubber grip insert for secure handling



- Use Heavy Duty Blades:

Stainless Steel	Carbon Steel	Solid Blades
LB10B (10 PACK)	LBB10B (10 PACK)	LSOL10B (10 PACK)
LB50B (50 PACK)	LBB50B (50 PACK)	

PCL Plastic / Laminate Heavy-Duty Cutter

- A scoring tool for sheet plastics and laminates, for precision breaking of plastic



- Use HD Blades: PB800 (3 PACK)

XH1 Comfort Grip Utility Knife

- Made of chemical resistance Fiber-Glass with a cushion grip handle



- Use Heavy Duty Blades: HB5B (5 PACK)

PL1 Multi-Blade Auto Load Utility Knife

- The high-impact ABS plastic handle holds up to 6 - eight edge snap-off blades



- Use Heavy Duty Blades:

Stainless Steel	Carbon Steel	Solid Blades
LB10B (10 PACK)	LBB10B (10 PACK)	LSOL10B (10 PACK)
LB50B (50 PACK)	LBB50B (50 PACK)	

SUG

Don't forget to check our replacement blades section Page 54

Best made cutting tools in the world.

CMP2 Heavy Duty Compass Cutter

- Cut circles from 3" to 12"
- Adjustable pivot point
- Great for cutting wind slits in banners



- Use Heavy Duty Blades:

Stainless Steel	Carbon Steel	Solid Blades
LB10B (10 PACK)	LBB10B (10 PACK)	LS0L10B (10 PACK)
LB50B (50 PACK)	LBB50B (50 PACK)	

SCS2 7" Stainless Steel Scissors



- Precision cutting with Anti-slip serrated edge
- For consumer and industrial use

RTY2DX 45mm Deluxe Rotary Cutter

- Easily cuts through multiple layers of fabric, vinyl and textiles with precision accuracy.



- Use Heavy Duty Blades RB455 (5 PACK)

SK10 Unique 4-Point Adjustable Blade Positioning

- Concealed blade safety knife
- Multi-point blade positioning
- Easy blade change



- Use Heavy Duty Blades SKB1010B (10 PACK)

DC3 Blade Disposal Can

- Pocket-size Can for Quick and Safe Snap-off Disposal of Standard and Heavy Duty Blades



DC4 Blade Disposal

- For Single-Edge – Utility Knife Snap-Off Blades



DC5 Reusable Blade Disposal Holster

- Convenient new way to safely snap and dispose of dull blade edges
- Easily attach the DC-5 to a belt or tool-bag for portability
- Two blade-snapping locations to accommodate left and right handers



RTY3G The largest of the OLFA rotary Cutters

- This tool is sharp enough to cut through difficult materials and up to 8 layers of fabric.



- Use Blades RB605 Blades (5 PACK)

SUG



Replacement Blades

REPLACEMENT BLADES - STANDARD DUTY BLADES

AB AB10S (10 PACK) • AB50S (50 PACK)
Stainless Steel



A1160B (10 PACK)
Acute Angle Snap off blades



ABB ABB10B (10 PACK) • ABB50B (50 PACK)
Carbon Blade, Double Honed 25% sharper



LCTB



KB (25 PACK)



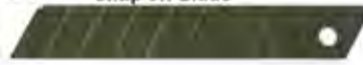
KB4S5 (5 PACK)
KB4S100 (100 PACK)

REPLACEMENT BLADES - HEAVY DUTY BLADES

LB LB10B (10 PACK) • LB50B (50 PACK)
Stainless Steel, Snap off Blade



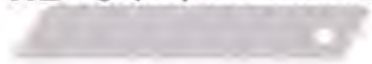
LBB LBB10B (10 PACK) • LBB50B (50 PACK)
Carbon Blade, Double Honed 25% sharper
Snap off Blade



RSKB2
RSKB210B (10 PACK)



HB HB5B (5 PACK)
High Quality Carbon Tool Steel Blade



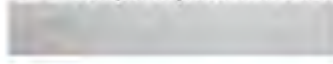
LSOL LSOL10B SOLID BLADES (10 PACK)



SKB2
SKB210B (10 PACK)



BS BS10B (10 PACK) • BSF6B (6 PACK)
Scraper Replacement blade



PB800 (3 PACK)



REPLACEMENT BLADES - SPECIALTY CUTTERS

LBB LBB10B (10 PACK) • LBB50B (50 PACK)
Carbon Blade, Double Honed 25% sharper
Snap off Blade



LB LB10B (10 PACK) • LB50B (50 PACK)
Stainless Steel, Snap off Blade



RB60
RB605 (5 PACK)

LSOL LSOL10B SOLID BLADES (10 PACK)



SKB10
SKB1010B (10 PACK)
The blade provide four
cutting surfaces.



RB45
RB455 (5 PACK)

SKB2
SKB210B (10 PACK)



OLO



OLO5B (5PACK) • OLO100B (100 PACK)
Also Fits Safety Speed Cut
• Keen Cut • Saw Trax Etc.

SINGLE EDGE RAZOR BLADE DISPENSER

Features:

- Safe, pop-up 100 blade dispenser
- Secure used blade storage in rear of unit
- Clear see through cover reveals remaining blades
- Push button dispenses blade allows blade to be handled opposite of sharp edge



650506
(100-Pak)

FOAMBOARD STRAIGHT CUTTER

Cut perfect straight edges on any depth of foamboard from 1/8" to 1/2".

- Adjustable blade depth
- Replacement blades WC-20



WC6001
Replacement blades **WC20**



DISPOSABLE FACE MASK

Part#	Description
PPDMSK	Disposable 50 Pack
PPDMSKB	Disposable - BULK 40 Boxes - (2000 Case)
PPDMSKBLK	Disposable 50 Pack - Black
PPDMSKBLKB	Disposable - BULK - Black 40 Boxes - (2000 Case)



SURGICAL FACE MASK

SUG

Part#	Description
PPDSURMSK	Surgical 50 Pack
PPDSURMSKB	Surgical - BULK 40 Boxes - (2000 Case)



KN95 MASK

SUG

Part#	Description
KN95MSK	KN95 Mask - 10 Pack
KN95MSKB	KN95 Mask - BULK 50 Boxes - (500 Case)



N95 MASK

*NIOSH
APPROVED
PRODUCT*

Part#	Description
PPDN95MSK	N95 Mask - 20 Pack
PPDN95MSKB	N95 Mask - BULK 12 Boxes - (240 Case)



FACE SHIELD

Part#	Description
PPDFSHLD	Face Shield - 10 Pack
PPDFSHLDB	Face Shield - BULK 20 - 10 Packs (200 Case)



**HAND
SANITIZER**
500ml - 16.9 FL OZ

Part#	Description
HSAN5004PK	500ml - 4 Pack
HSAN500B	500ml - 24 Per Case



**HAND
SANITIZER**
5 Liter

Part#	Description
HSAN5L	5 liters - 2 Pack



**HAND
SANITIZER**
100ml - 3.4 FL OZ

Part#	Description
HSAN100	100ml - 24 Pack
HSAN100B	100ml - 48 Pack



**HAND
SANITIZER**
30ml - 1 FL OZ

Part#	Description
HSAN30	70% - 30ml - 96 per case

SAFER WIPES



Part#	Description
PPDWIPESB	Wipes - 1 Case - 36 - 50 PK

INFRARED THERMOMETER



Part#	Description
PPIR988	IR Thermometer - Each
PPIR988B	IR Thermometer BULK 80 Per Case

LATEX FREE VINYL GLOVES



SUG

Part#	Description
PPLTGL	Gloves Lg 50 Pk
PPLTGLB	Gloves BULK Lg 500 Pk

HAND SANITIZER STATIONS

5 LITER



Use with HSAN5L



Part#	Description
SSLW	Light Weight Stand Adjustable
HSAN5L	5 Liters - Refiller (2 Pack)

ALCOHOL 75% DESINFECTANT

100ml - 3.4 FL OZ



SUG

Part#	Description
ALC7512PK	75% - 100ml - 12 Pack
ALC75B	75% - 100ml - 1 Case 96 Per Case



**SUGLE
DISINFECTION
SPRAY**
500ml

Part#	Description
SUGLE24	Disinfection Spray 500ml - 24 pcs per case

CALL FOR CURRENT MARKET PRICING

MORE INFO: (888) 679-5175 | sales@gsswf.com | www.gsswf.com

PERSONAL PROTECTION PRODUCTS

58

MONSTER



LASER ENGRAVING

YOUR NAME HERE

YOUR NAME HERE

GRAPHIC
SUPPLY | SOURCE

We Can Customized Your Rulers
Give us a Call for more information!!

MORE INFO: (888) 679-5175

sales@gsswf.com | www.gsswf.com

Sooper Graphics Shop Set-up Check List



Qty	Part#	Description	Catalog Page
	SF1025B	¼" Spider feet	04
	SF1050B	½" Spider Feet	04
	SFJ1050B	½" Jumbo Spider Feet	04
	CH4W	4-Pak Sooper Ceiling Hooks	05
	SH	Sooper Hinge A-Frame/Handle lit	05
	SHF	Sooper Hinge Feet	05
	BTK1000	BannerTrak Banner Hanging system	06
	SLK3000	Linklip Chain link Mounts	11
	BB1	Banner Bond - Double Sided Tape	12
	MMR1600	Mondo Mobile Rack - 16 Rolls - 60" Media	15
	MJ1000	MondoRaxx Wall Rack	15
	MR16	Mobile Rack for 3" cores (use MR12 for 2" cores)	16
	SC50	Sooper Clips for Media Rolls	17
	ID12A	Asst Core ID Tags	17
	MANO	Mano Press Grommet Press w/ 250 Clear grommets	19
	SR3000	Sooper Rounder Corner Rounder	26
	ESL28	28" Sooper Edge Safety Ruler	27
	ESL52	52" Sooper Edge Safety Ruler	27
	TS15BLK	T-Square for Sooper Edge Rulers	27
	XJ4PAK	Aluminum Straight edge kit 4,5,6 and 8 foot lengths	28
	TA24	24" ProRoll Tape Applicator	29
	PTA1000	PRO-Table Top Applicator	29
	CM	Xtreme Cutting Mats (size to match your cutting table)	31
	SQAL20	Alumaluminum Squeegees	34
	ALHDLCT	Aluminum HD Liner Cutter	34
	DR12AMT	Medium Tack Tacky Roller	36
	WES	WetEdge Squeegees	38
	TPOUCH4	Tool Pouche	43
	Pick your Preference	Sooper Chair - Installer/Shop Chairs	45
	XMH6	Installer Magz	46
	WG1	Wrap Gloves	47
	ER-1	Emblem Removal Tool	48
	WCKNIFE	Wrap Cut Knife	50
	WCKTWIN	Wrap Cut Knife Twin	50
	COROCUT	Coro Cutter	50
	AK4	OLFA High Quality Precision Knife	51
	WC6001	Foamboard Straight Cutter	55

MORE INFO: (888) 679-5175 | sales@gsswf.com | www.gsswf.com

Check Out Our New Section of
Personal Protection Products



**Some of the products
for 2021**

Sooper Strap



Mini Roller



For More Information Call [888] 679-5175
sales@gsswf.com | www.gsswf.com