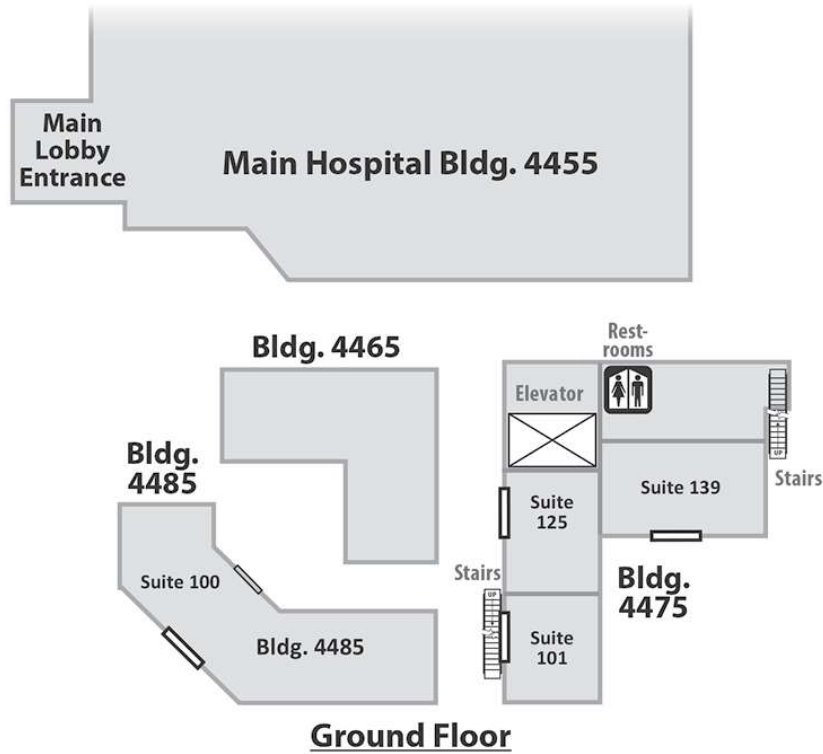
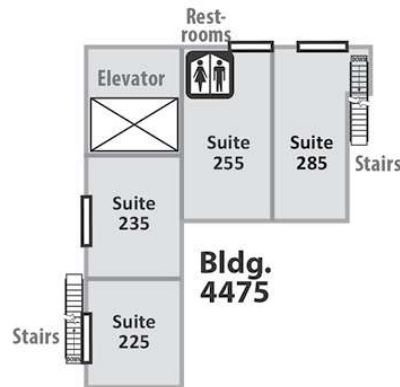


Hospital Campus Specialty Buildings



Ground Floor



Second Floor (Bldg. 4475 Only)

SANTA CRUZ VALLEY PHYSICIAN GROUP BUILDING #4485 – SUITE #100

Enes Kanlic, MD, FAAOS, Board Certified Orthopedic Surgeon – **Building #4485, Suite 100**, 520-393-4980

BUILDING #4475 SECOND FLOOR

Steven M. Gillespie, DPM, Board Qualified Podiatric Surgeon – **Building #4475, 2nd Floor, Suite 225**, 520-393-4720

Vinod Gollapalli, MD, Board Certified General Surgeon - **Building #4475, 2nd Floor, Suite 255**, 520-393-4937

Matthew Khumalo, MD, Board Certified Family Medicine Physician - **Building #4475, 2nd Floor, Suite 255**, 520-393-4863

Lisa Olson, FNP-C – Primary Care Provider **Building # 4475, 2nd Floor, Suite 255**, 520-393-4863

HOSPITAL CAMPUS MEDICAL PROVIDER GROUPS

Annie-Lourdes G. François, MD – Orthopedic Surgery – **Building #4485, Suite 100**, 520-622-7384

AZ Community Surgeons – Orthopedic & General Surgery – **Building #4475, 2nd Floor, Suite 235**, 520-622-7384, www.acssurgeons.com

AKDHC (AZ Kidney Disease & Hypertension Center) – **Building #4475, 1st Floor, Suite 101**, 520-585-4590, www.akdhc.net

Outpatient Physical Therapy – **Building #4485, Suite 100**, 520-393-4748

Pima Heart & Vascular – **Building #4475, 1st Floor, Suite 125**, 520-648-1139, www.pimaheart.com

Pima Neurology – **Building #4475, 2nd Floor, Suite 235**, 520-638-5553, www.pimaneurology.com

Pima Pain Center – **Building #4485, Suite 100**, 520-399-6000, www.pimaincenter.com

HOSPITAL CAMPUS MEDICAL PROVIDER GROUPS (Cont.)

Renewed Medical Health & Beauty – Svetlana Burtman, NP - **Building # 4475, 2nd Floor, Suite 235**, 520-298-0005

Rizwan Safdar, M.D. Gastroenterologist, 520-624-4342 (Call for an appointment)

Santa Cruz Valley Regional Hospital Outpatient Therapy - **Building #4485, Suite 100**, 520-393-4748

Urological Associates of Southern Arizona – **Building #4475, 2nd Floor, Suite 235**, 520-795-5830, www.uroassociates.com

United Community Health Center (UCHC) – **Building #4475, 1st Floor, Suite 139**, 520-407-5910, www.uchcaz.org

Valley Ear, Nose & Throat – **Building #4475, 2nd Floor, Suite 285**, 520-792-2170, www.azvent.com



Santa Cruz Valley Regional Hospital

4455 S. Interstate 19 Frontage Rd. (East side of I-19)

Green Valley, AZ 85614, Main: 520-393-4700

www.scvrhaz.com



PHOTO COMPLEMENTS OF KGVY RADIO

FOR SECURITY REASONS, MAIN HOSPITAL BUILDING PATIENTS & VISITORS, PLEASE ENTER THROUGH THE MAIN LOBBY OR THE EMERGENCY ROOM ENTRANCES.

HOSPITAL CAMPUS LOCATIONS & LISTINGS

Main Hospital Building Phone Numbers:

Emergency Room Services Information: 520-393-4750

Full-Service Lab Information: 520-393-4755

Full-Service Imaging: 520-393-4829, FAX – 520-393-4910

Main Lobby Entry Locations:

- All Patients Please Check-In for In-Hospital Procedures
- ALL VENDORS PLEASE CHECK IN AT THE LOBBY INFORMATION DESK
- Information Desk & Visitor Assistance
- Lab & Imaging Clinics
- Human Resources
- Administration Offices
- Facilities Management
- Restaurant, Coffee Shop & Gift Shop
- Hospital Chapel

Emergency Room

- Emergency Room Check-In for Walk-Ins
- Care Giver Waiting Room for Walk-Ins & Patients Transported by Ambulance

