



PHOTO COMPLEMENTS OF KGVY RADIO

FOR SECURITY REASONS, MAIN HOSPITAL BUILDING PATIENTS & VISITORS, PLEASE ENTER THROUGH THE MAIN LOBBY OR THE EMERGENCY ROOM ENTRANCES.

HOSPITAL CAMPUS LOCATIONS & LISTINGS

Main Hospital Building Phone Numbers:

Emergency Room Services Information: 520-393-4750

Full-Service Lab Information: 520-393-4755

Full-Service Imaging: 520-393-4829, FAX – 520-393-4910

Main Lobby Entry Locations:

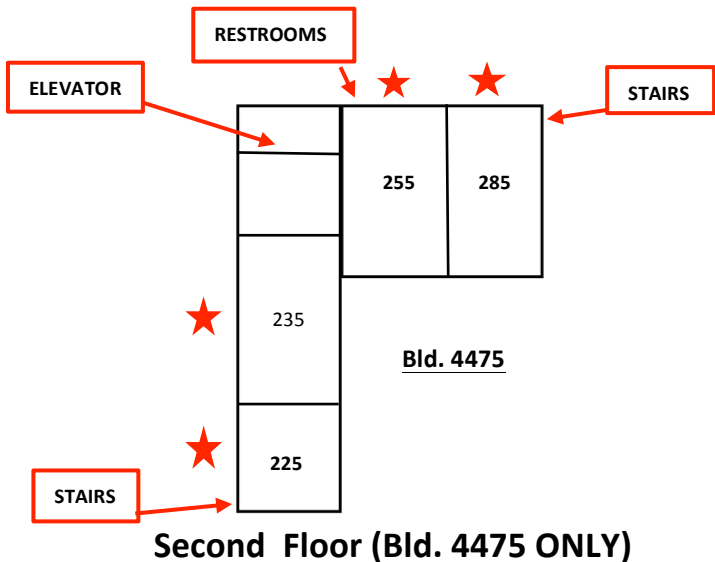
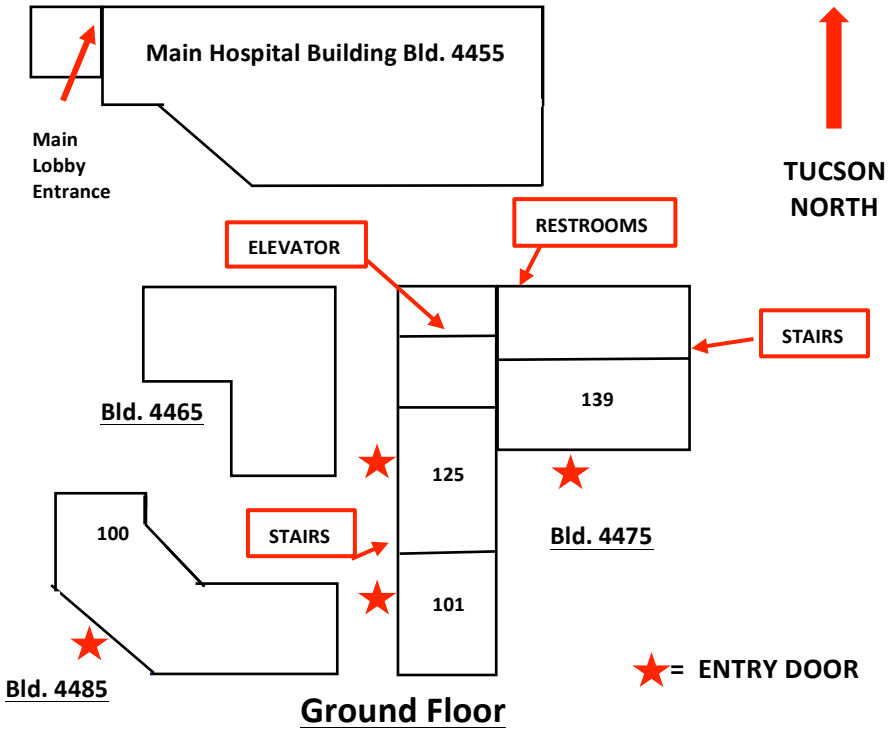
- All Patients Please Check-In for In-Hospital Procedures
- **ALL VENDORS PLEASE CHECK IN AT THE LOBBY INFORMATION DESK**
- Information Desk & Visitor Assistance
- Lab & Imaging Clinics
- Human Resources
- Executive Management Offices
- Facilities Management
- Restaurant, Coffee Shop & Gift Shop
- Community Meeting Room
- Hospital Chapel

Emergency Room

- Emergency Room Check-In for Walk-Ins
- Care Giver Waiting Room for Walk-Ins & Patients Transported by Ambulance



HOSPITAL CAMPUS SPECIALITY BUILDINGS



★ = ENTRY DOOR

HOSPITAL CAMPUS MEDICAL PROVIDER GROUPS

AZ Community Surgeons – Orthopedic & General Surgery – Building #4475,
2nd Floor, **Suite 235**, 520-622-7384, FAX: 520-545-7261,
www.acssurgeons.com

AKDHC (AZ Kidney Disease & Hypertension Center) – Building #4475,
1st Floor, **Suite 101**, 520-585-4590, FAX: 520-398-7540,
www.akdhc.net

Pima Heart – Building #4475, 1st Floor, **Suite 125**, 520-648-1139, FAX: 520-
625-1003, www.pimaheart.com

Pima Neurology – Building #4475, 2nd Floor, **Suite 235**, 520-638-5553, FAX:
520-638-5543, www.pimaneurology.com

Pima Pain Center – Building #4485, 1st Floor, **Suite 100**, 520-399-6000, FAX:
520-399-6002, www.pimapaincenter.com

Renewed Medical Health & Beauty – Svetlana Burtman, NP, Building # 4475,
2nd Floor, **Suite 235**, 520-298-0005

Rizwan Safdar, M.D. Gastroenterologist, 520-624-4342, FAX: 520-624-4337

Saguaro Surgical - Dawn Elliott, MD, General, Robotic, Endocrine, Breast &
Vascular Surgery, For appointment location call 520-318-3004, FAX:
520-318-3061, www.saguarosurgical.com

Santa Cruz Valley Physicians Group - Olivia E. Morris, DO, F.A.O.A.O, Board
Certified Orthopedic Surgeon, Fellowship Trained in Sports Medicine,
Arthroscopy, Joint Reconstruction, Building #4485, **Suite 100**, 520-
393-4980, FAX: 833-605-7237

Santa Cruz Valley Physicians Group - Steven M. Gillespie, DPM, Doctor of
Podiatric Medicine – Building #4475, 2nd Floor, **Suite 225**,
520-393-4720, FAX: 833-598-5510

Santa Cruz Valley Physicians Group - Vinod Gollapalli, MD, General Surgeon
Building #4475, 2nd Floor, **Suite 255**, 520-393-4937, FAX: 833-605-
7237

Santa Cruz Valley Primary Care – Andrew Lyons, FNP, Building # 4475, 2nd
Floor, **Suite 255**, 520-393-4863, FAX: 833-605-7237

Tucson Orthopedic Institute – Building #4485, 1st Floor, **Suite 100**,
520-382-8200, FAX: 520-297-3505, www.tucsonortho.com

Urological Associates of Southern Arizona – Building #4475, 2nd Floor, **Suite**
235, 520-795-5830, FAX: 520-885-4469, www.uroassociates.com

OVER

HOSPITAL CAMPUS MEDICAL PROVIDER GROUPS

United Community Health Center (UCHC) – Building #4475, 1st Floor,
Suite 139, 520-407-5910, FAX: 520-407-5990, www.uchcaz.org

Valley Ear, Nose & Throat – Building #4475, 2nd Floor, Suite 285, 520-792-
2170, FAX: 520-792-9702, www.azvent.com