



SOMA LITTLE ROCK

# RETAIL SPACE

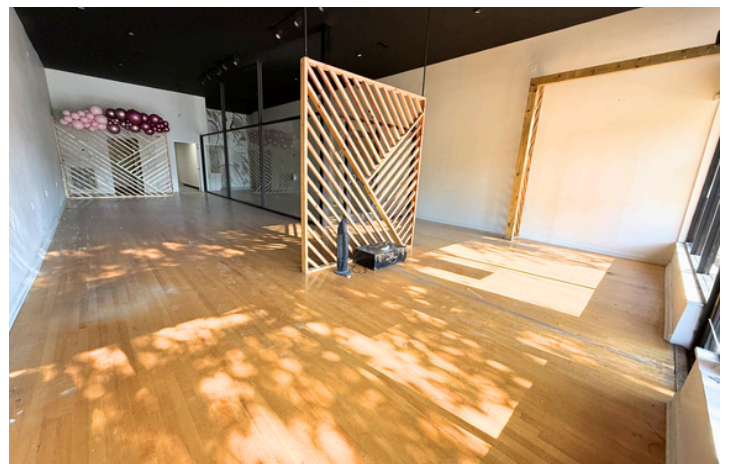
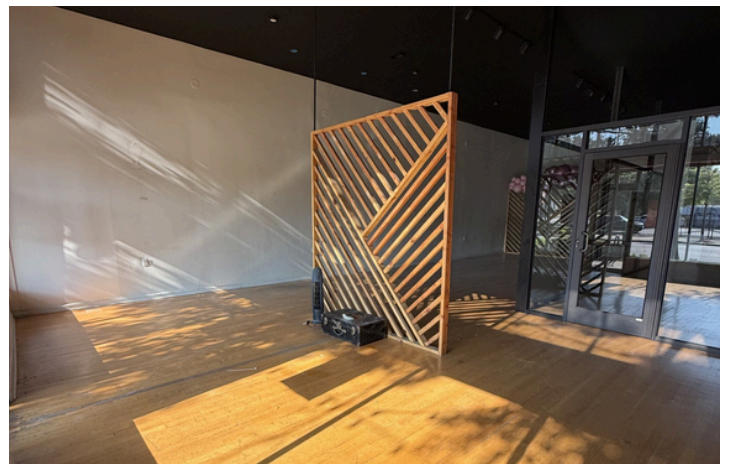
FOR LEASE

1222 MAIN STREET  
LITTLE ROCK, AR

## CONTACT AGENT FOR PRICING

### ABOUT THE PROPERTY

- Spacious 2,068± SF commercial space in the busy and vibrant SoMa district
- Highly desirable, rare SoMa retail space available for lease, with highly visible Main Street frontage
- Located on the 1200 block of Main Street, this beautiful brick property is in the heart of the South Main district of Little Rock's downtown
- Prime location, located among all SoMa area shopping and dining
- Tenant improvement allowance negotiable



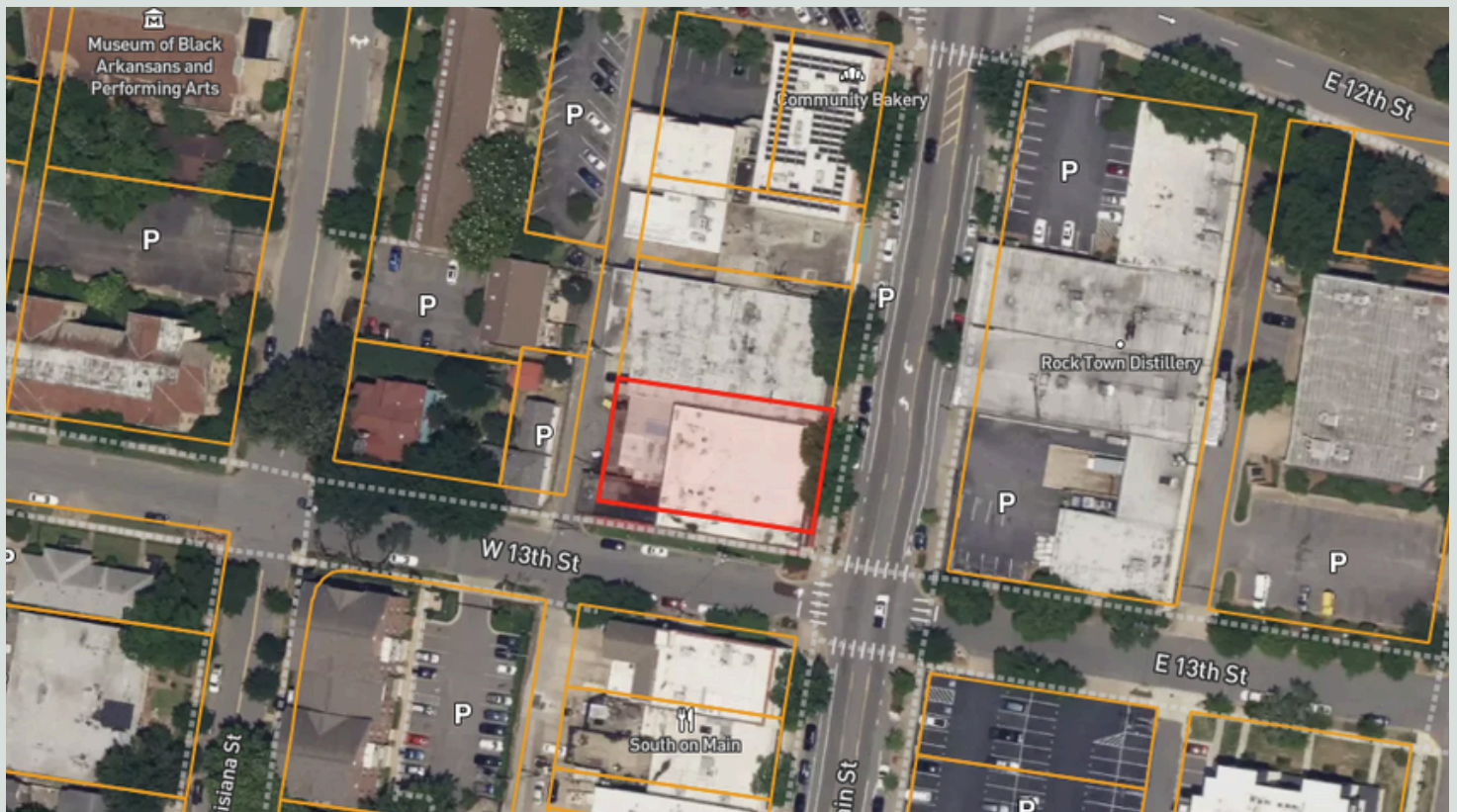
(501) 374 - 2303

 HAYBAR  
REAL ESTATE

haybarrealestate.com



Frontage  
to all  
of SoMa's  
events &  
festivals



All information contained herein is secured from sources we believe to be reliable. However, no information is guaranteed in any way. Any reproduction of this material is prohibited without consent of Haybar Real Estate.

AGENCY/OWNERSHIP DISCLOSURE

Haybar Real Estate is the agent for the owner of the property described herein and has an ownership interest.



ASHLEY FONDREN

501-374-2303

haybarrealestate.com