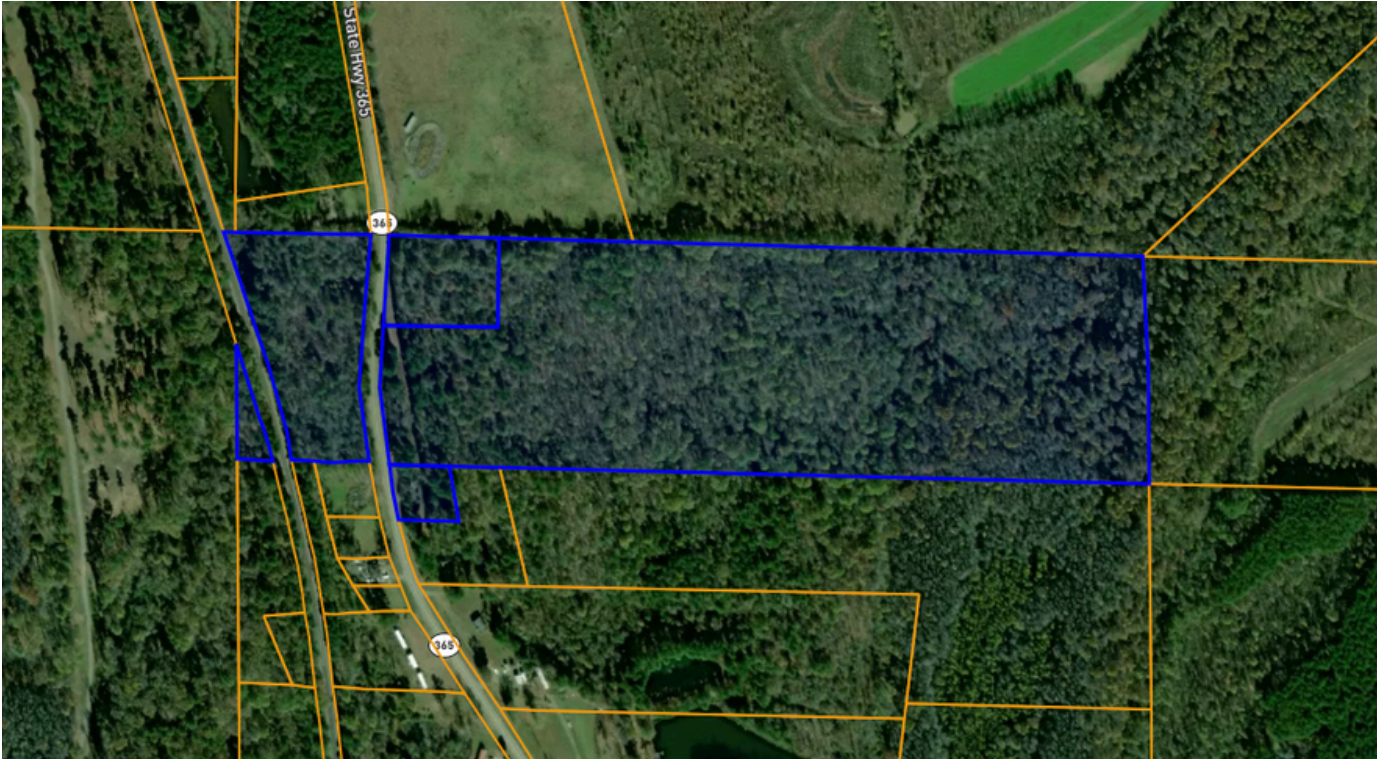


# WRIGHTSVILLE / HWY 365 S.

LITTLE ROCK, AR



**FOR SALE**  
**\$112,500**

- **40.63± ACRES**
- Approximately 25 minute drive from downtown Little Rock
- Potential for hunting land or new residential/commercial development
- Mostly wooded, relatively flat
- Frontage on both sides of highway

