

# CAPABILITY STATEMENT



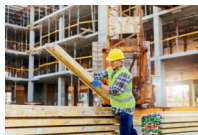
## COMPANY OVERVIEW

TerryWorldWide, LLC is a global wholesale distributor. We supply a vast array of materials and products in multiple industries such as food, construction, cleaning supplies and much more. All of our products are vetted to pass all government performance and safety standards. Over 14 years of trusted service. We serve government agencies, educational institutions, and healthcare providers.

## CORE COMPETENCIES



Custom Procurement Solutions



Construction Materials



Cleaning Materials



E-bikes



Cargo e-bikes

## DIFFERENTIATORS

- We work with our customers to provide them innovative products at prices that save money.
- Diverse supply chain with fast turnaround times.

## PAST CLIENTELE

- NYC Department of Transportation, 2025 (E-Bike Trade-In Program)
- CNY Regional Transportation Authority, 2025
- NYC Department of Sanitation, 2025
- NYC Department of Transportation, 2023
- NYC Department of Environmental Protection, 2022
- NYC Office of Health & Mental Hygiene, 2021
- NYC Department of Buildings, 2021

Our mission is to support commercial development by delivering high-quality materials that stand the test of time, while uplifting communities, fueling innovation, and serving as a trusted partner in creating spaces where people live, work and thrive.

## COMMODITY CODES

### NAICS CODES

- 425120: Wholesale Trade Agents and Brokers
- 423300: Lumber & Other Construction Materials Merchant Wholesalers
- 423000: Merchant Wholesalers, Durable Goods
- 424410: General Line Grocery Merchant Wholesalers
- 424490: Other Grocery and Related Products Merchant Wholesalers
- 423490: Other Professional Equipment and Supplies Merchant Wholesalers

### NIGP CODES

- 85000: Goods
- 45000: Hardware and related items
- 54000: Lumber, siding, and related products
- 38500: Foods, Frozen
- 39049: Meat: Cured, Fresh, and Frozen
- 39084: Vegetables, Fresh

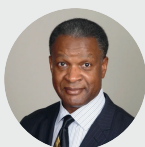
**DUNS: 078484504**

**CAGE: 6TTU0**

**UEI: CQM2N4CQTNM8**

## CERTIFICATIONS

- **New York** | NYS MWBE, NYC MWBE, DBE (Port Authority NYNJ), ACDBE (Port Authority NYNJ), MBE (Port Authority NYNJ)
- **Michigan** | DBE, ACDBE, Wayne County DBE, Wayne County Airport Authority SBE
- **Virginia** | DBE, VDOT SBE, SWaM, SB, Micro
- **Washington, DC** | DBE, SBE, MBE
- **Florida** | DBE
- **Georgia** | DBE, MBE
- **Maryland** | DBE, ACDBE
- **Minnesota** | DBE
- **Colorado** | DBE, ACDBE
- **Nevada** | DBE



Terry Willis  
Founder & CEO

## CONTACT US TO LEARN MORE

📍 Michigan 📞 313.974.8341

📍 New York 📞 917.744.7551

✉️ [terry@terryworldwide.com](mailto:terry@terryworldwide.com)

🌐 [www.terryworldwide.com](http://www.terryworldwide.com)

