

Instructions for Use



1. Title: SnapBlock

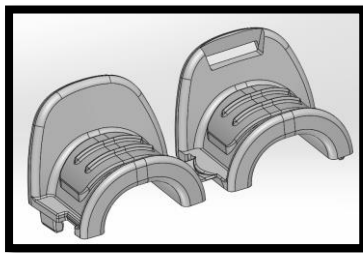
2. **Product Title-** SnapBlock is a versatile bite block to protect patients and medical equipment

3. **Purpose Statement-** The SnapBlock is a disposable bite-block that can be applied before or after the placement of medical equipment in the oral cavity. It is intended to prevent damage to endoscopic, airway, diagnostic, or therapeutic equipment.

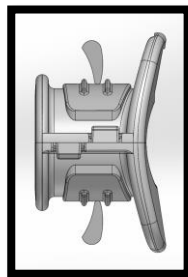
During endoscopic procedures, bite-block is used to prevent the patient from biting down the endoscope and to prevent mutual damage caused by friction between the teeth and lining of the endoscopic equipment. The instructions in this manual aim to help the user to correctly apply the bite block and avoid damage to the patient and endoscopic equipment.

4. Visual of Product-

Open configuration



Closed configuration



5. Important Information –

Before using, read the instructions and warnings thoroughly. This equipment is intended to be used by healthcare providers with appropriate training on specific diagnostic or therapeutic techniques in which bite-block is necessary. This device is intended for single patient only, and it should not be reprocessed or reused.

6. **Preparation Instructions-** First, inspect the package carefully before opening. The equipment is manufactured and supplied clean in a non-sterile package. Open and remove the packaging and carefully inspect for defects or damage. In case of damage to the equipment or the package, please contact Thoracic Innovations.

7. **Administration Instructions-** SnapBlock can be placed in the patient's oral aperture before or after the placement of the endoscope. The change from open to closed configuration should always be performed outside the patient's oral cavity before moving into position(see page 2 illustration). The soft material layer should be in contact with the dentition line for stabilization and to cushion the pressure exerted by the proceduralist. SnapBlock is a specialty product designed for patients with average size or small oral aperture. SnapBlock should not be used in edentulous patients or if the oral aperture is larger than the front flange of the device due to the risk of dislodgment of the device into the airway.

8. **Storage Instructions-** The product should always be kept in the package until intended use. It should be kept indoors and avoid direct sunlight or excessive heat. It should be kept in a dry and clean environment.

9. Disposal Instructions-

After use, this product may be a potential biohazard. Handle and dispose of the product and packaging in accordance with accepted medical practice and applicable local, state, and federal laws and regulations.

10. Additional Information-

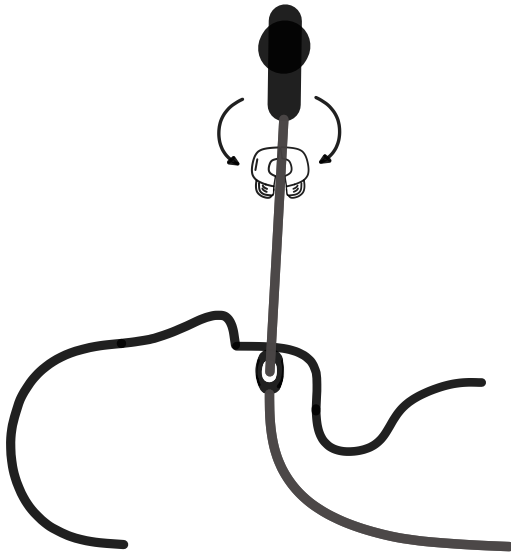
Symbols

	Non-Sterile		Keep away from sunlight
	Use by		Lot number
	Manufacturer		Date of manufacture
	Keep dry		Do not use if package is damaged
	Give attention to IFU		Item number
	Do not resterilize		Do not reuse
	Medical Device		

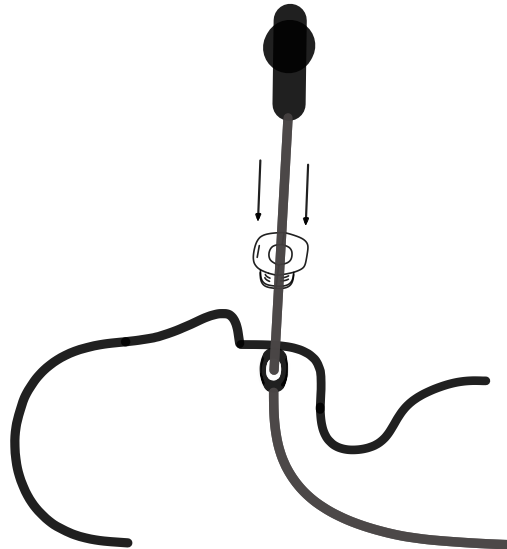
Please see page 2 for important information



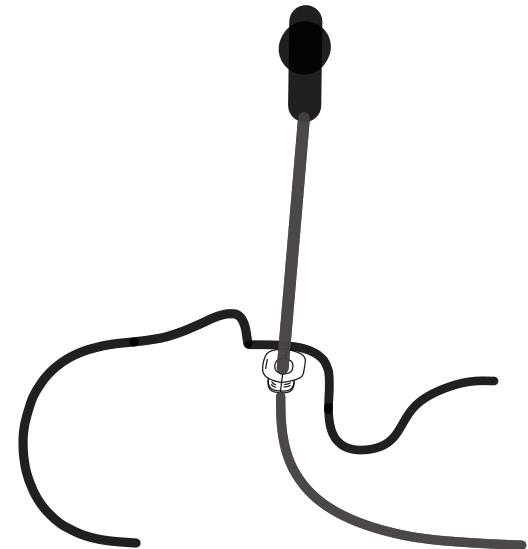
1-Clip the SnapBlock around the scope by manual approximation of the two halves.



2-Slide the Snapblock over the scope towards the patient.



3-Adjust the final position with the soft pad over the teeth, **and** the front flange outside the oral cavity.



Support: In case of questions, training, or product issues, please contact a local distributor or contact Thoracic Innovations.
email: info@thoracicinnovations.com
www.thoracicinnovations.com
Phone number – 9842247910