

Metallic Luster

Metallic and Pearlescent Effects

DEX-O-TEX®

Dex-O-Tex Product Line
Crossfield Products Corp.

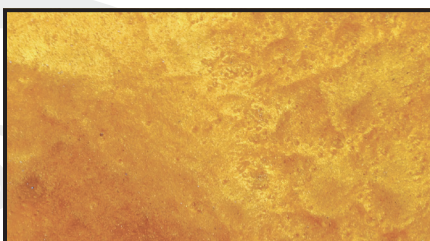
www.dexotex.com

3000 E. Harcourt Street
Rancho Dominguez, CA 90221
Tel. (310) 886-9100
Fax (310) 886-9119

140 Valley Road
Roselle Park, NJ 07204
Tel. (908) 245-2800
Fax (908) 245-0659



101 COPPER KETTLE



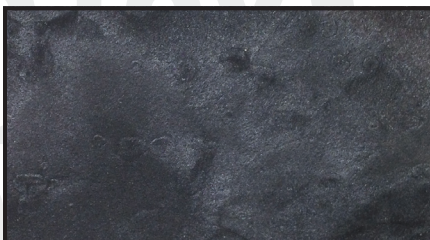
102 MUSTARD



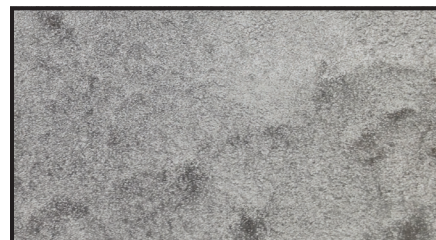
103 CHOCOLATE



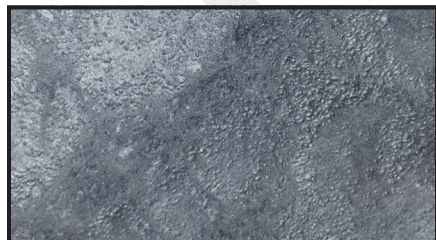
104 PEWTER



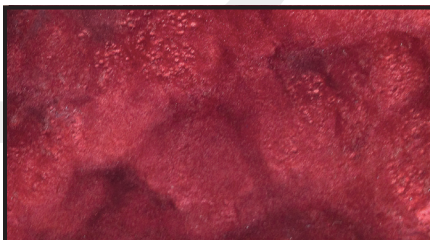
105 CHARCOAL



106 SPARKLE SILVER



107 GRAPHITE



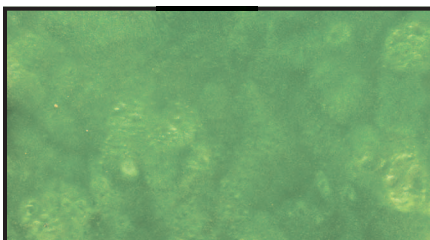
108 CRANBERRY



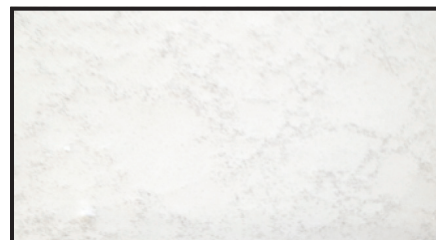
109 COBALT BLUE



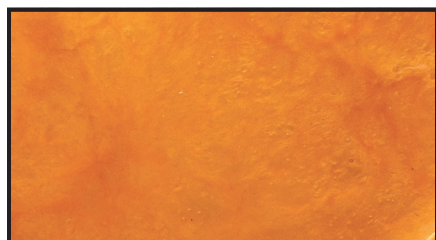
110 EMERALD GREEN



111 PISTACHIO



112 PEARL (IN WHITE PIGMENTED RESIN)*



113 ORANGE



COPPER KETTLE + CHOCOLATE**



PEWTER + COBALT BLUE**

*112 (PEARL) CAN BE ADDED TO ANY PIGMENTED RESIN TO CREATE A SHIMMER EFFECT

**Two or more metallic colors may be combined in the fluid state during application to create unique and distinctive looks

Printed color chart approximates actual color. Final color appearance is affected by lighting, surface texture and method of application. Two or more metallic powders can be combined to produce a metallic effect. Final color approval should be made from physical samples produced by the installing contractor. Depending on sealer selection, a clear gloss or clear satin top coat may be required to achieve the desired look. Consult your Dex-O-Tex Representative for further assistance.