

Mecca Capital Fund, L.P.

Mecca Capital Fund is an agnostic, conviction-weighted strategy. The Fund invests in companies with (1) inside ownership (2) nascent markets (3) superior margin and (4) modeled cash flow growth.

- Assets Sought: \$10 – \$20 Million
- Concentration: 7 – 12 Securities
- Structure: Domestic Feeder (Delaware)
- Benchmark: MSCI ACWI Index
- Broker: Interactive Brokers
- Legal: Feinstein Law
- Management Fee/Performance Allocation: 2%/20%
- High Watermark: Yes
- GP/Advisor/Fund: Mecca Funds, LLC/Mecca Partners, LLC/Mecca Capital Fund, L.P.

Philosophy

We invest in businesses we believe may repeat top-line growth, retain revenue, and thrive for decades. We intend to allocate capital for at least three years in each position; however, our ideal holding period is 'forever.' Our selection process favors momentum; we believe the most successful, well-run organizations continue succeeding. We are strict bottom-up investors, committed to individual stock selection, agnostic to sector weighting, and indifferent to company size.

Large Cap vs. Smallcap: We invest in companies of all size and may do so until assets grow too large to bear liquidity risk. Obscure smallcaps provide investors 1) understudied issuers 2) under-correlated equities and 3) valuable alternatives such as a) private equity b) income c) asset and d) royalty.

Universe: The Advisor may select from all public companies listed on global exchanges.

Track Record

We demonstrate analytic capability in different industries, geographies, growth and value stocks, special situations, equity size, and liquidity. We tout a track record of institutional grade research provided to endowments, family offices, and research boutiques. Since 2017, our average return per stock is 276%, with an average peak return of 718%; four stocks returned over 1000%, and each of the first eleven returned at least 100%, with many between 200% and 600%. Our lone short thesis witnessed 97% decline. Our library of research – a compilation of hundreds of pages of quantitative and qualitative reporting – includes analyses of some of the most complex businesses, and some of the most misunderstood. Often, our contrarian theses produced enormous value.

Our methodology implements academic valuation and two edicts of fundamental analysis: industry wide thesis and company specific catalyst. We meet with hundreds of management teams and stringently select stocks and management teams we believe may produce outsized returns.

- All research reports, extended literature, and data are available on [MeccaPartners.com/Research](https://meccapartners.com/research).

Our People

Managing Partner: Arham Khan began his career providing institutional portfolio managers large-cap research. After finding success in both large and small businesses, he created his own practice and began leading research and due diligence for family offices. Clients relied on Arham for large cap investment analysis and microcap controlling interest opportunities. His practice expanded internationally from The United States into Canada, Europe, and The Middle East. Arham grew up in The United States, Pakistan, Hong Kong, and Saudi Arabia. He earned his degree in Business Administration from California State University, Fullerton. He is also a graduate of Saudi Aramco Expatriate Schools and Webb School of California. While at Fullerton, he successfully oversaw a portfolio of assets for the Philanthropic Foundation. Prior to Advisory, Arham worked as an analyst for a multinational bank in Los Angeles. He credits his early life for adaptability and personability in his international, entrepreneurial life and career as well as the accurate and successful assessments of highly complex businesses and securities, especially in controversial assessments.

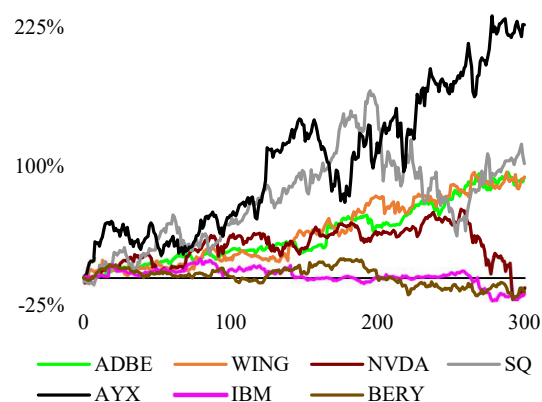
Principal/Legal: Todd Feinstein's career in securities and capital markets began in the early nineties, and he has been involved in every facet of the securities industry over the ensuing twenty-five years. Todd has worked as broker, market maker, compliance officer, options principal, broker principal, and head trader for a panoply of boutiques and regional broker/dealers, though he credits his earlier career as a sailor and seaman for the resourcefulness and confidence required to deal with rapidly evolving corporate issues for the most demanding clients. Todd founded Feinstein Law in 2012 to focus on assisting companies, their officers, and their attorneys with securities compliance and legal issues. Todd oversees securities offerings and the going public and staying public process, including drafting and reviewing offering materials, registration statements, periodic reports and disclosures as well as schedules and other filings with the SEC and FINRA. His experience includes all corners of transfer agent operations, including submissions to the SEC, state regulators, and the Depository Trust Company. Todd has traveled the world's oceans extensively in his previous career as a licensed commercial fishing boat captain and oceanic navigator under sail.

Board of Advisors: We have retained a world class Board of Advisors to assist with the Advisor's research, investment strategy, and growth efforts. Advisors include Chris Lahiji, Founder and President of LDMicro, Albert Lee, Founder and Managing Director of Lee MultiStrategy Management, formerly Partner and Head of China and Special Situations Research at Maxim Group, and Barry Rafferty, Chief Financial Officer of Americor.

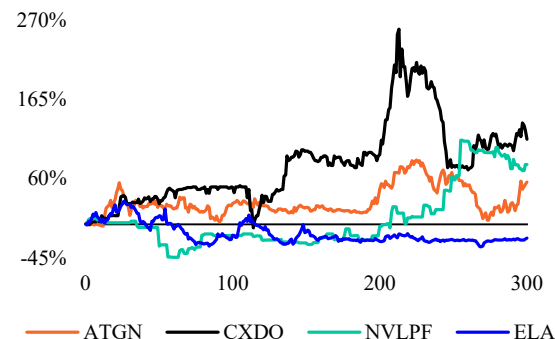
- PPM may be requested by contacting 909.996.9609 or arham@meccapartners.com.

Symbol	Report	Return Achieved	Original Size
ADBE	02/2017	479%	\$60 billion
WING	04/2017	1473% / 76% Div	\$800 million
NVDA	09/2017	4125% / 6% Div	\$110 billion
IBM	09/2017	127% / 45% Div	\$135 billion
SQ	12/2017	663%	\$15 billion
AYX	02/2018	613%	\$1 billion
LFMD	10/2018	2344%	\$12 million
ATGN	02/2019	189%	\$20 million
CXDO	10/2019	258%	\$45 million
NVLPF	12/2019	152%	\$20 million
ELA	01/2021	221%	\$135 million
FVRR	01/2021	55%	\$7 billion
BOMH	02/2021	1%	\$110 million
VOYG	03/2021	53%	\$3 billion
BERY	04/2021	17%	\$8 billion
Short UPST	10/2021	-97% Short	\$30 billion

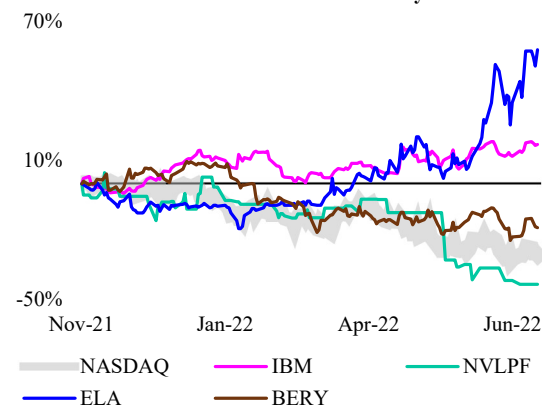
First 300 Days After Research Report, Market Cap >\$1 Billion



First 300 Days After Research Report, Market Cap <\$100 Million



Uncorrelated and Defensive Companies During Extreme Market Volatility



Symbol	Thesis Date	All Time High	Return – March 2026	Index Return, S&P 500	Sector
ADBE	02/2017	479%	109%	175%	Technology
WING	04/2017	1473%	573% / 76% Dividend Yield	178% / 23% Dividend Yield	Restaurants
NVDA	09/2017	4125%	3424% / 6% Dividend Yield	160% / 20% Dividend Yield	Technology
IBM	09/2017	127%	74% / 35% Dividend Yield	160% / 20% Dividend Yield	Technology
SQ	12/2017	663%	61%	143%	Technology
AYX	02/2018	613%	87%	77% – AYX Acquired	Technology
LFMD	10/2018	2344%	212%	128%	Healthcare
ATGN	02/2019	189%	-46%	134%	Technology
CXDO	10/2019	258%	98%	124%	Technology
NVLPF	12/2019	152%	-19%	102%	Healthcare
ELA	01/2021	221%	218%	73%	Consumer
FVRR	01/2021	55%	-95%	69%	Consumer
BOMH	02/2021	1%	-100%	66%	Consumer
VOYG	03/2021	53%	-100%	67%	Crypto
BERY	04/2021	17%	6%	10% – BERY Acquired	Consumer
Short UPST	10/2021	(-97%) Short	(-93%) Short	46%	Finance

Symbol	Uncorrelated	Private Equity	Growth or Value	Smallcap/Nanocap	Defensive	Special Situation
ADBE			Growth			
WING			Growth			
NVDA			Growth			
IBM	Modest Uncorrelation		Value		✓	
SQ			Growth			
AYX			Growth			
LFMD			Growth	✓		
ATGN			Value	✓		✓
CXDO		Quasi-private	Both	✓		
NVLPF	✓	Quasi-private		✓	✓	
ELA	✓	Quasi-private	Both	✓	✓	
FVRR			Growth			
BOMH			Growth	✓		
VOYG	Unknown		Growth	✓		
BERY	✓	Quasi-private	Value		✓	✓
Short UPST	Short	-	-		-	-

Source Information

The specific securities identified and described represent all securities explicitly recommended by the Managing Partner, Arham Khan, prior to the inception of Mecca Partners (aka The Advisor). All performance shown represents past performance. Past performance is no guarantee of future results and current performance may be higher or lower than the performance shown. No assumptions should be made that the securities identified and discussed will be profitable. Fund target allocation is not final and is subject to change and securities referenced are not recommendations to buy or sell any security. Arham Khan is an author of all research reports listed and is the sole author of all reports except three. Arham owns all the research reports except for the Upstart Holdings short report which is owned by Arham's client, a Canadian family office. The performance tables and charts show the Advisor's securities research history and the returns achieved by the securities afterwards. Past performance will not necessarily continue in the future. Research returns are calculated using the price of each security as of the reference dates compared against the price of the security at the time of research report composition. For research reports provided to family offices, initial price references closing price of the security on the day Arham delivered an invoice to a paying client.

Disclaimer and Statement on Forward-Looking Statements

The materials provided herein are for general information purposes only and may not be copied or redistributed without Mecca Partners' prior consent. The views expressed represent Mecca Partners' assessment as of the dates identified herein and should not be considered a recommendation to buy, hold, or sell any security, and should not be relied on as research or investment advice. The information in this presentation, including statements concerning financial markets, is based on current market conditions, which will fluctuate and may be superseded by subsequent market events or for other reasons. Opinions expressed are those of Mecca Partners, LLC and are subject to change, are not guaranteed, and should not be considered investment advice.

This presentation may contain forward looking statements within the meaning of the Private Securities Litigation Reform Act of 1995 relating to our business, operations, and financial conditions, including but not limited to current beliefs, expectations, and assumptions regarding the future of our business, future plans and strategies, our portfolio management plans, and other future conditions. Words such as, but not limited to, look forward to, believe, expect, anticipate, estimate, intend, plan, would, should and could, and similar expressions or words identify forward looking statements. New risks and uncertainties may emerge from time to time, and it is not possible to predict all risks and uncertainties. Except as required by applicable law, we do not plan to publicly update or revise any forward-looking statements contained herein, whether as a result of any new information, future events, changed circumstances, or otherwise. Although we believe the expectations reflected in such forward-looking statements are reasonable, we can give no assurance that such expectations will prove to be correct. Accordingly, readers are cautioned not to place undue reliance on these forward-looking statements. No representations or warranties (expressed or implied) are made about the accuracy of any such forward-looking statements.

Hedge fund investing involves risk. Principal loss is possible. The Fund may not meet its investment objective or may underperform the market or other hedge funds with similar investment strategies if the Advisor cannot successfully implement the Fund's investment strategies. Mecca Capital Fund may concentrate its assets in fewer individual holdings than a diversified fund. Small and mid-capitalization companies tend to have limited liquidity and greater price volatility than large capitalization companies. The trading market for a particular security or type of security in which the Fund invests may become less liquid or even illiquid. The Fund's investment in larger companies is subject to the risk that larger companies are sometimes unable to attain the high growth rates of successful, smaller companies.

The Fund's investment objectives, risks, charges, and expenses must be considered carefully before investing. The private placement memorandum and accompanying documents may be obtained by calling 909.996.9609, or by visiting MeccaPartners.com. Read the prospectus carefully before investing.

Mecca Partners, LLC is the advisor to Mecca Capital Fund, L.P. The General Partner of the Fund is Mecca Funds, LLC.