

# CR-M4

## Fulfill Big Ambitions Efficiently

Quasi-Industrial Grade Large Format 3D Printer



450\*450\*470mm  
Build Volume



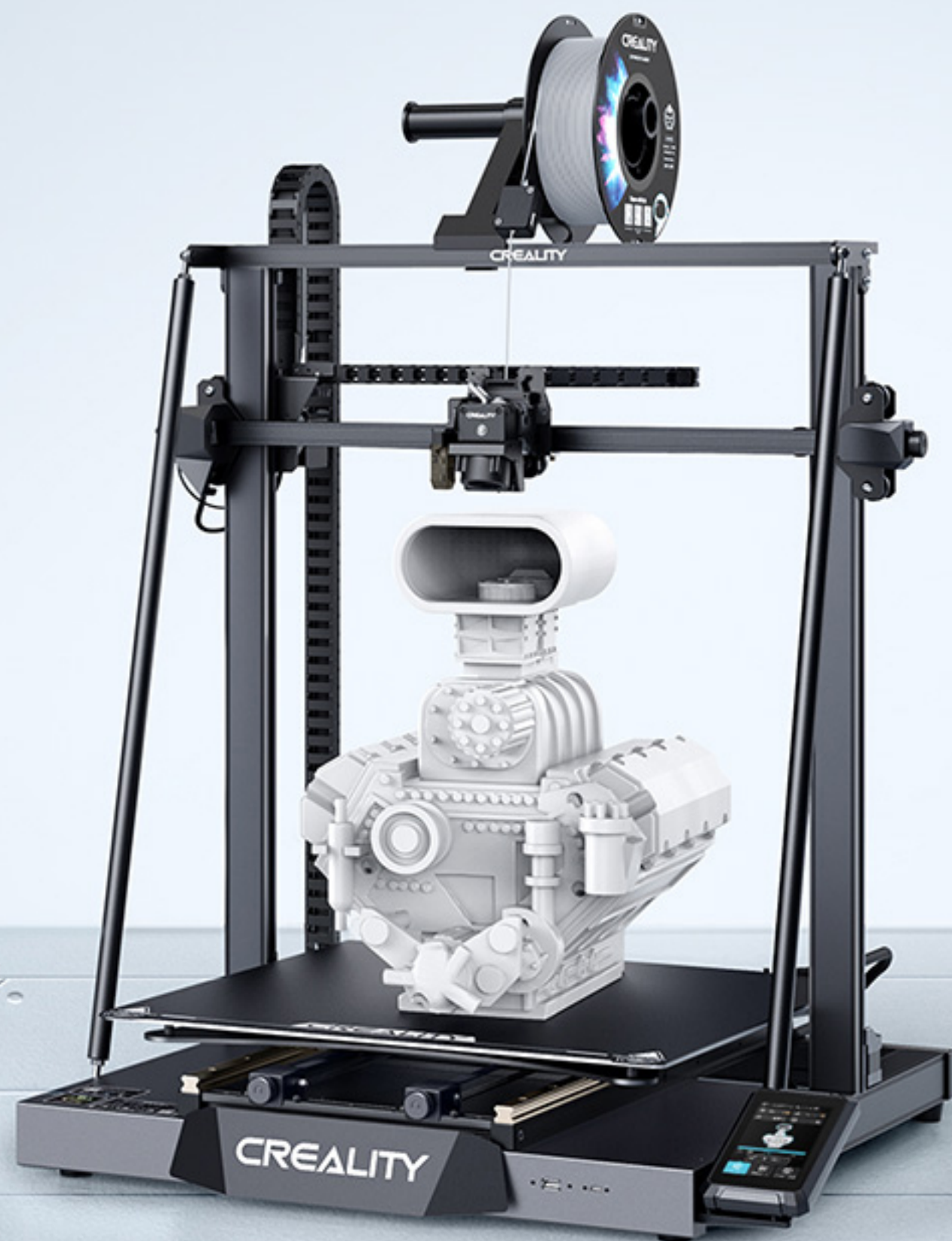
Quality Dual Y-axis  
Linear Rails

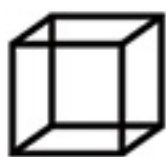


More Ways  
of Printing



"Sprite" Dual-gear  
Direct Extruder

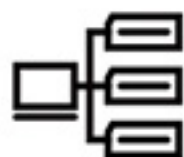




450\*450\*470mm  
Build Volume



Quality Dual Y-axis  
Linear Rails



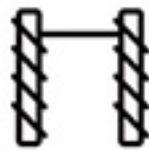
Multi-printers  
Control



“Sprite” Dual-gear  
Direct Extruder



CR Touch 25-point  
Auto-leveling



Anti-wobbling  
Dual Z-axis



PC Spring Steel  
Build Surface



800W Industrial Control  
Power Supply





## Quasi-industrial Grade Large Format

CR-M4 boasts a massive build volume of 450\*450\*470mm. It's a real workhorse to create big models with less or no post-processing or to batch-print more parts in one go. Time to max out creativity and let thoughts run wild.

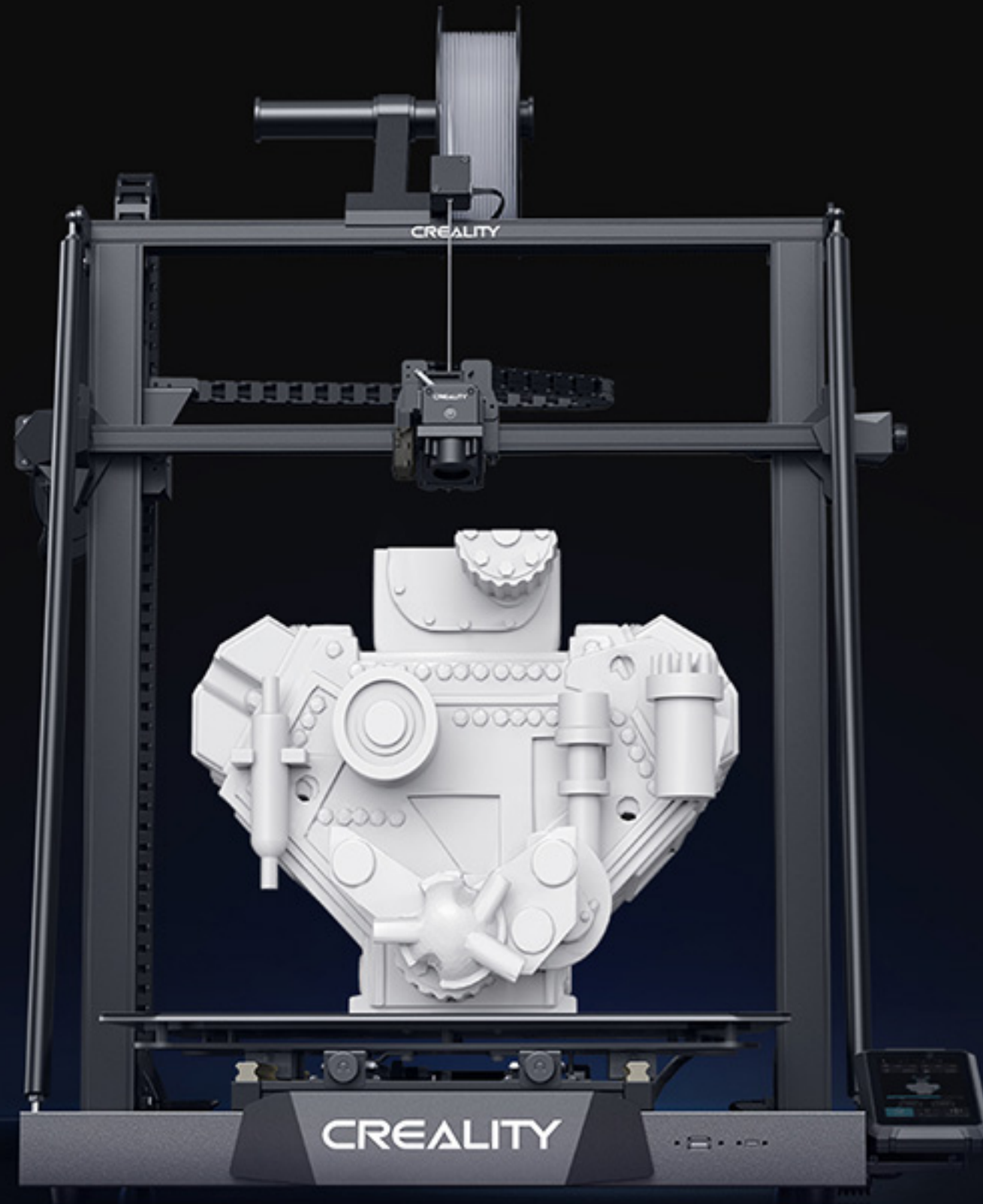
### Wide Applications

- Life-size model
- Prototyping
- Architectural model
- Small-batch production



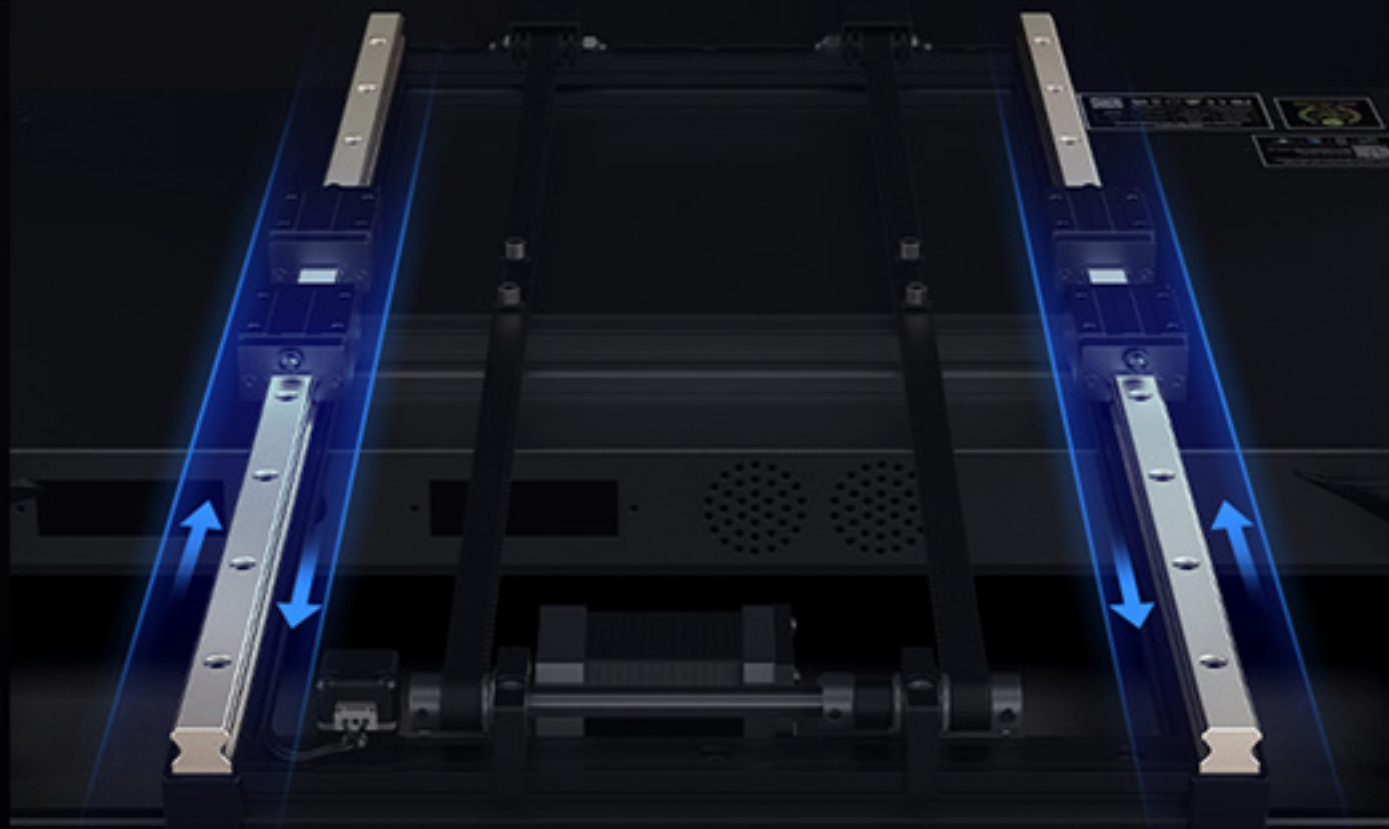
## Precise and Reliable Dual Y-axis Linear Rails

2 CNC-machined precision linear rails optimize the Y-axis transmission which, driven by a strong and precise motor, runs accurately and smoothly. Made out of bearing steel, the rails can withstand wears, backlashes and heavy load. Way more reliable and durable than V-slot rails.



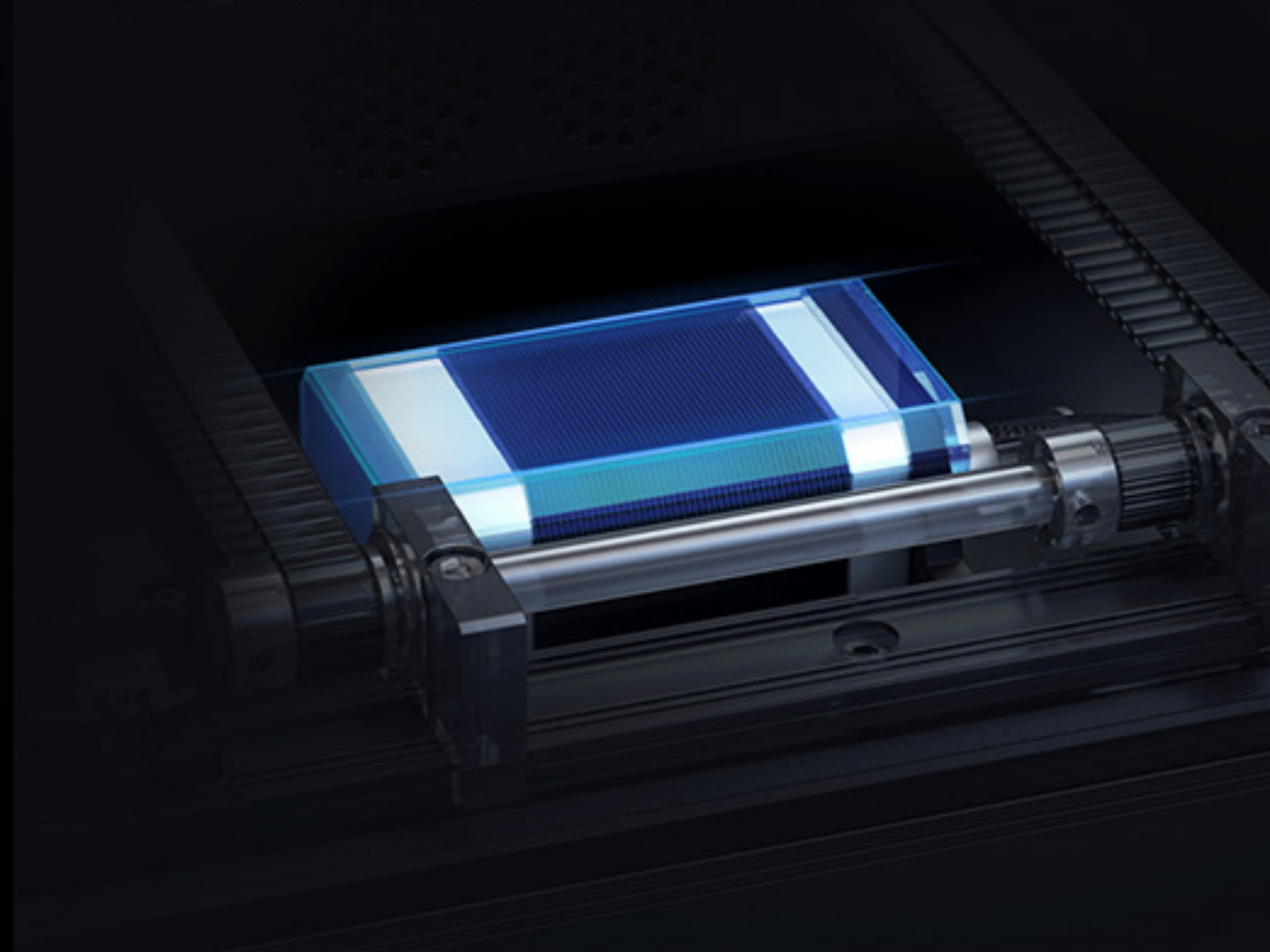
## Y-axis Dual Linear Rails

30kg+ weight-bearing capacity\*



## Strong and Precise Motor

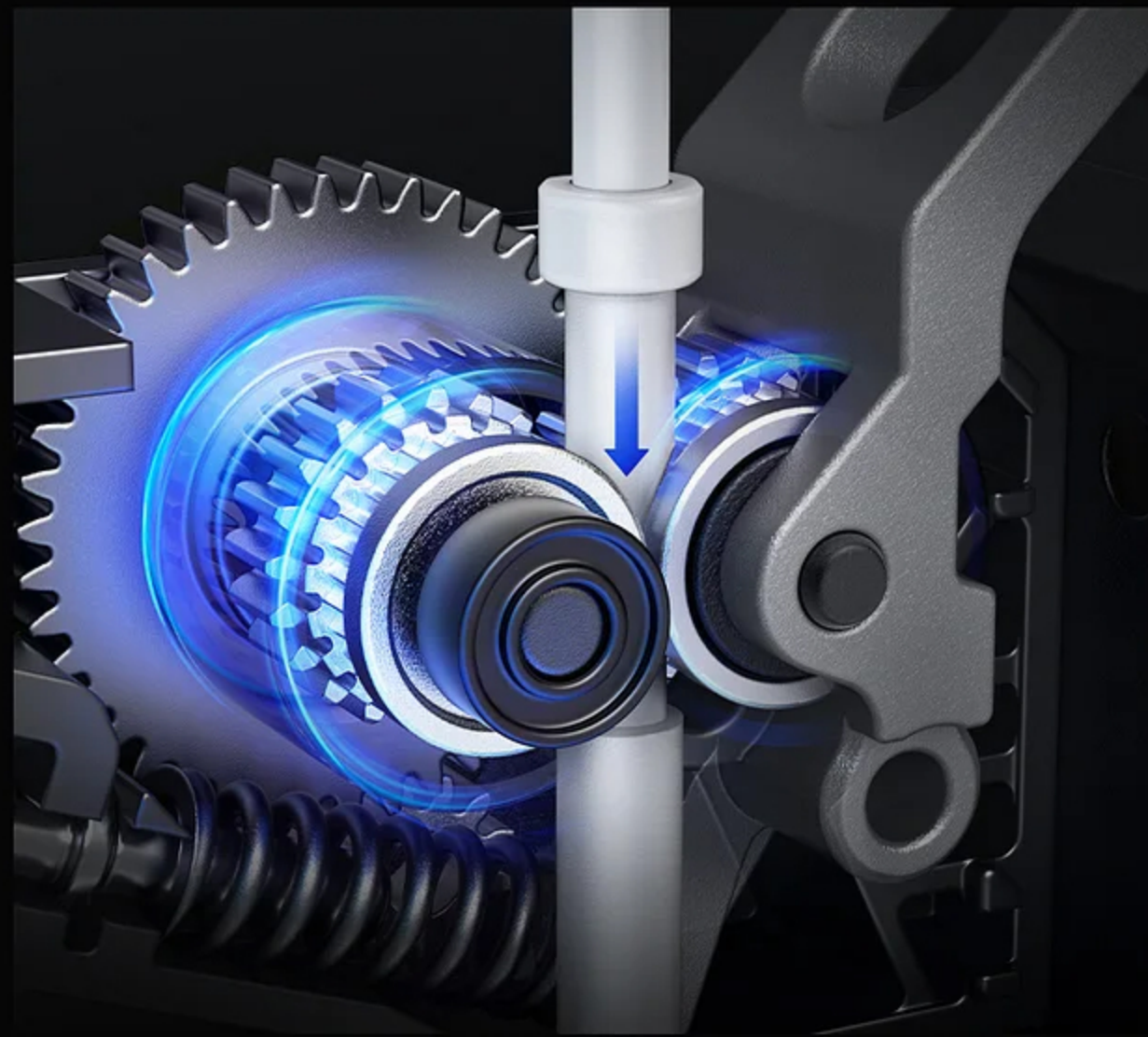
720h (30 days) constantly steady printing\*



\*Data from Creality Lab

### **Raise the Bar of Extruder Specs**

All-metal "Sprite" direct extruder with dual-gear design, providing a strong and uniform 80N extrusion force. Great to extrude flexible filaments like TPU.





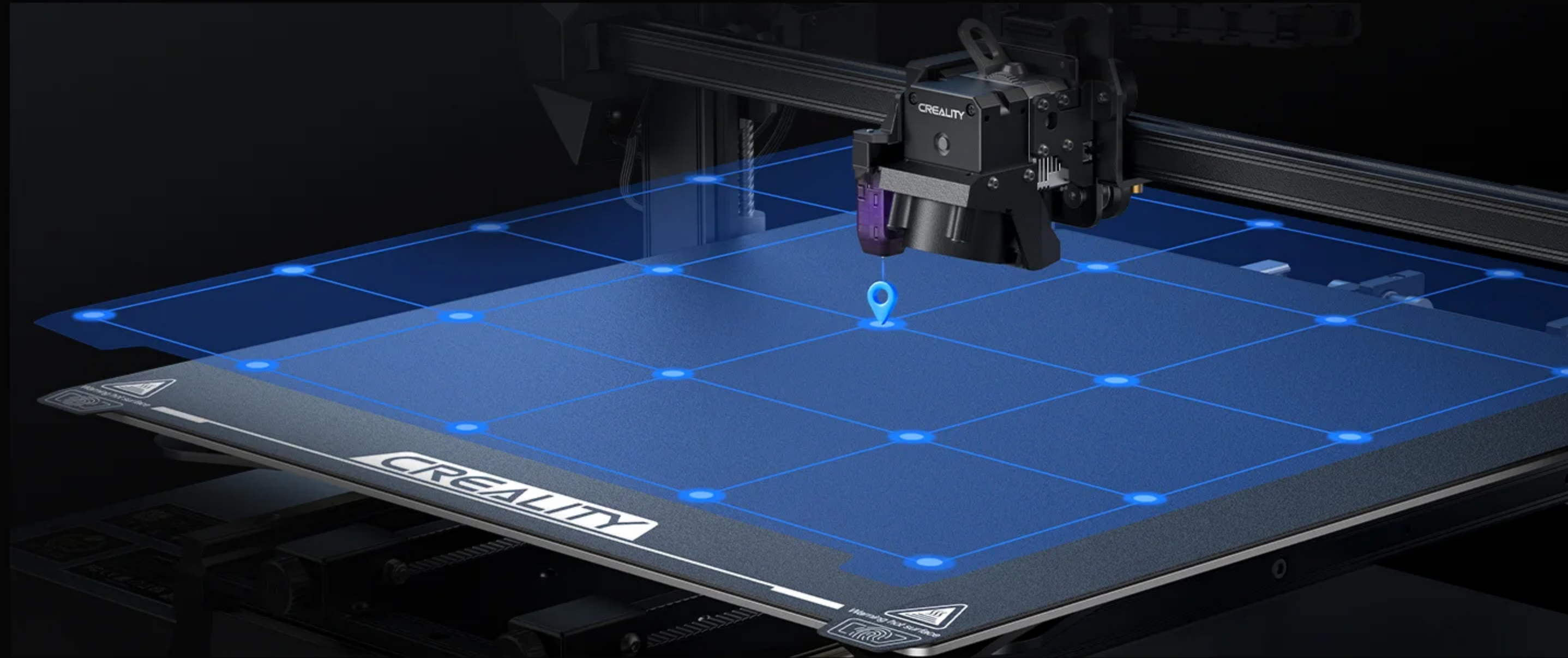


### **High-flow Hotend**

Upgraded high-flow nozzle plus 50W heater cartridge, fully melt high-temp filament at 300 °C for fluent feeding. Swappable with a 0.6\0.8mm nozzle.

## Genuine 25-point Auto-Leveling

Fully automatic leveling with CR Touch by probing 25 points, and Z offset at 0.05mm accuracy to quickly calibrate the distance between the nozzle and the build surface.







### **Color Screen with Simplified UI**

A 4.3-in color screen features simple and responsive touch control, supporting model preview and temperature PID tuning.

It will time out after 5 minutes of no further activity. Even better, you can enable the energy-saving Sleep Mode.



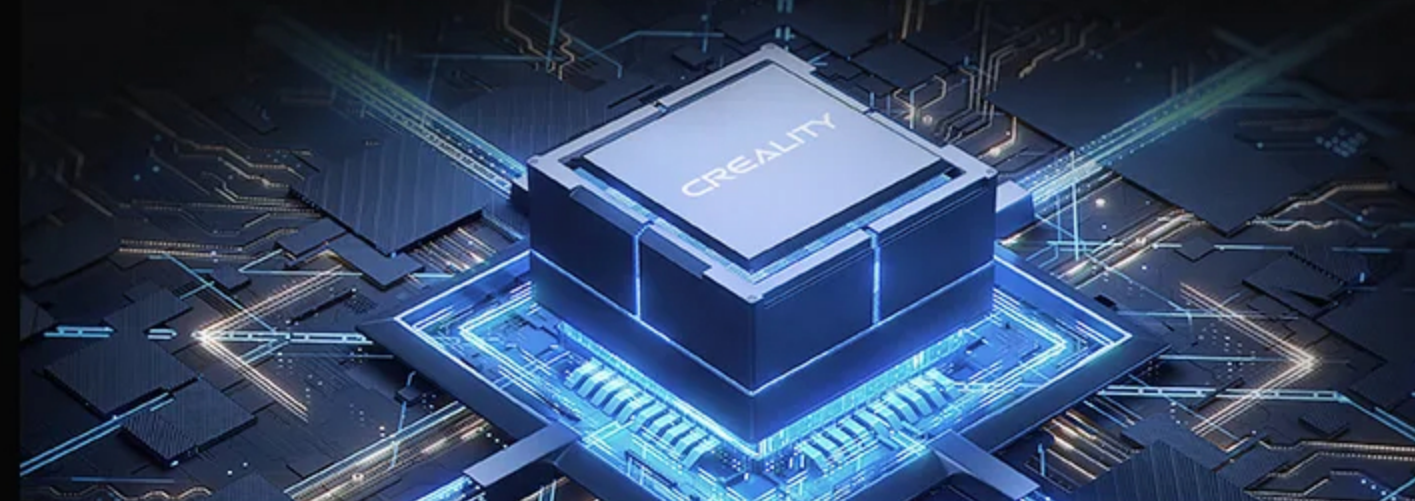
### Cable Chain

Avoid wire entanglement



### Silent Mainboard

The noise within 1m is controlled at 50 decibels (only loud as indoor talking)



### Dual Spool Holders

More prepared to replace filament





<b>Printing Technology:</b> FDM	<b>Heatbed Temperature:</b> ≤100°C
<b>Build Volume:</b> 450*450*470mm	<b>Build Surface:</b> PC spring steel sheet
<b>Product Dimensions:</b> 655*700*865mm	<b>Leveling Mode:</b> CR Touch Auto-leveling
<b>Package Dimensions:</b> 790*760*300mm	<b>File Transfer:</b> USB drive, WiFi, USB-C cable, RJ45 cable
<b>Net Weight:</b> 22.48KG	<b>Display Screen:</b> 4.3-inch color touch screen
<b>Gross Weight:</b> 28.3KG	<b>Mainboard:</b> Integrated 32-bit silent mainboard
<b>Printing Speed:</b> ≤120mm/s	<b>Power Loss Recovery:</b> Yes
<b>Printing Accuracy:</b> ±0.1mm	<b>Filament Runout Sensor:</b> Yes
<b>Layer Height:</b> 0.05-0.35mm	<b>Multi-printers Control:</b> Yes
<b>Extruder Type:</b> "Sprite" dual-gear direct drive extruder	<b>Sleep Mode:</b> Yes
<b>Extruder Material:</b> All metal	<b>Rated Voltage:</b> 100-240V~, 50/60Hz
<b>Filament Diameter:</b> 1.75mm	<b>Rated Power:</b> 800W
<b>Z-axis Count:</b> 2	<b>Slicing Software:</b> Creality Print, Creality Slicer, Cura
<b>Nozzle Type:</b> Brass nozzle	<b>File Formats:</b> STL, OBJ, AMF
<b>Nozzle Diameter:</b> Standard 0.4mm (compatible with 0.6/0.8mm)	<b>Supported Filaments:</b> PLA, PA, ABS, PLA-WOOD, PLA-CF, TPU, PETG
<b>Nozzle Temperature:</b> ≤300°C	<b>UI Languages:</b> English, Spanish, German, French, Russian, Portuguese, Italian, Turkish, Chinese