

Sonic MEGA 8K

LCD 3D Printer

The ONE & ONLY 8K 3D Printer

The first-ever 8K 3D Printer available on the market. With its significantly large size and staggeringly high precision printing capabilities, Sonic Mega 8K offers effortless printing for everything with astonishing 8K resolution.



System: Phrozen OS
Operation: 5 inch Touch Panel
Slicer Software: ChiTu Box V1.9.0
Connectivity: USB | Ethernet

Technology: Resin 3D Printer - LCD Type
Light Source: 405nm ParaLED® Matrix 3.0
XY Resolution: 0.043 mm
Layer Thickness: 0.01 - 0.30 mm
Printing Speed: 70 mm / hr
Power Requirement: AC100-240V~50/60Hz
Printer Size: L47 x W40 x H68 cm
Printing Volume: L33 x W18.5 x H40 cm
Printer Weight: 35 kg



Package List

Phrozen Sonic Mega 8K LCD 3D Printer comes in simple yet well-protected packaging which contains all the necessary parts you need to jump start your printing.



8K Printing Capabilities

Sonic Mega 8K trumps all other 3D printers on the market by showcasing striking details at 43µm producing 3D models that are almost twice as detailed as other large-scale 3D printers.



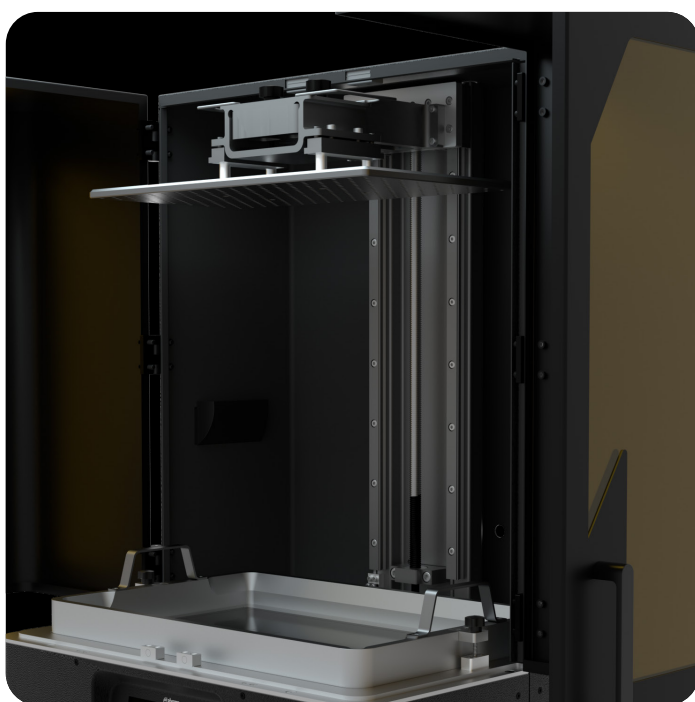
15" Mono-LCD Screen

Sonic Mega 8K comes with the largest Mono-LCD printing area on the market with 15". In comparison, the largest printing area was previously only 13.3".



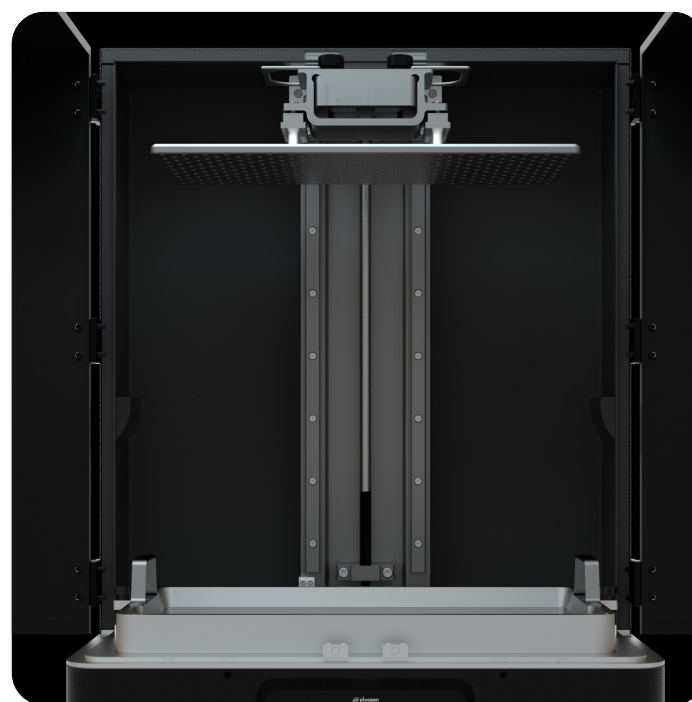
Huge Printing Volume

The largest XY printing area with a 40cm tall Z-axis, enabling you to print significantly larger models in one sitting.



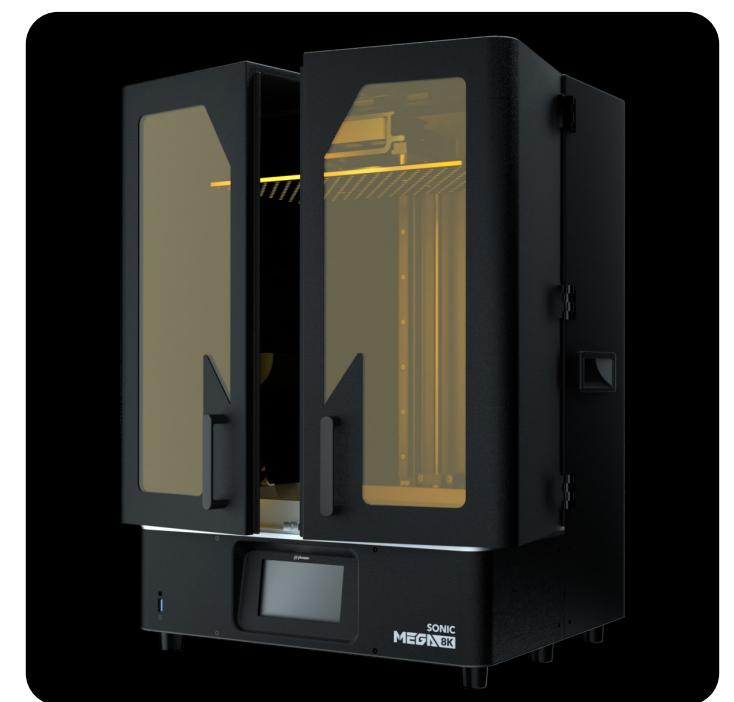
Pre-Calibrated Building Plate

All Sonic Mega 8K building plates will be calibrated perfectly before they are shipped, which means that all you need to do is take your device out of the box and you're all set to begin printing!



Dual Linear Rail & Ball Screw Design

For an ultra-stable Z-axis, Sonic Mega 8K adopts this specific design so that large and heavy objects can be printed with no wobbling.



Full Metal Exterior

Phrozen Sonic Mega 8K is made completely of metal. This strengthens the entire structure, making it stronger, and more sustainable for long-term usage.