



HAYDEN KYNE

RANK

-

CLASS

2025

POSITION

C

HANDEDNESS

RHH



E-mail:

hayden.kyne2025@gmail.com

Age:

14



State:

231

School:

-



Height:

5' 7"

Weight:

155 lbs



Coach Name:

James Kyne

Facility Name:

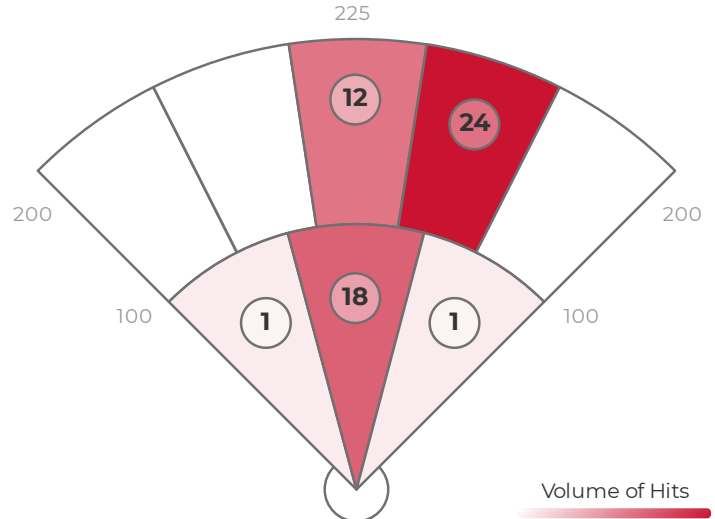
Lady Magic- Walling 07

## DATA

	AVG	MAX	HARD HIT AVG
EXIT VELO	63.9	79.0	72.1
L. ANGLE	16.1	66.9	13.1
DIRECTION	8.4	63.5	1.7
DISTANCE	125	198	133
SPIN RATE	1194	3327	1030

BATTING AVG	.561
XWOBA	.511
SLUGGING	.589
HARD HIT %	17.5%
BOMBS %	1.8%
ROPES %	8.8%

## RAPSCORE



## ZONE BREAKDOWN

Zone	Volume of Hits	AVG LA	AVG EV	AVG RPM	AVG Distance
PULL	1/56	0	79	822	42
MIDDLE	50/56	15	65	1154	128
OPPO	5/56	18	56	1298	118

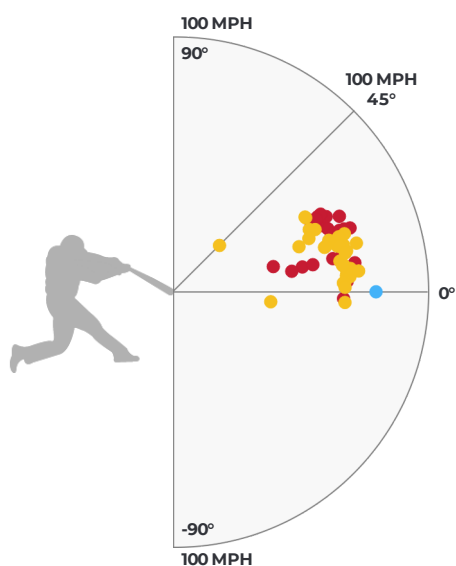
## HIT OUTCOME

Single	Double	Triple	Home Run	Field Out
54.4%	1.8%	0%	0%	43.9%

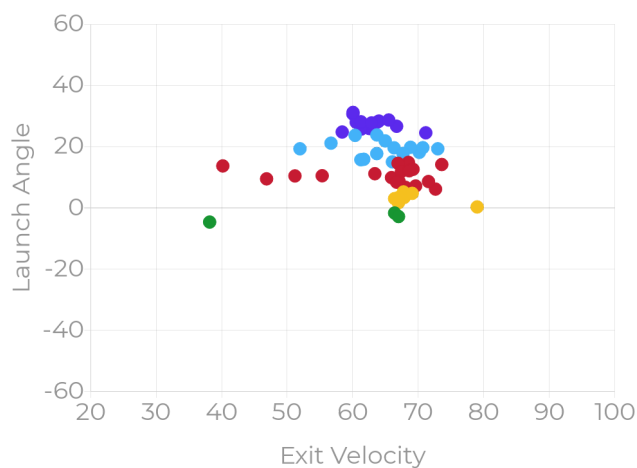
## HIT CLASSIFICATIONS

Dribbler	Ground	Low Line	High Line	Fly Ball	Pop Up
5.3%	12.3%	31.6%	26.3%	22.8%	1.8%

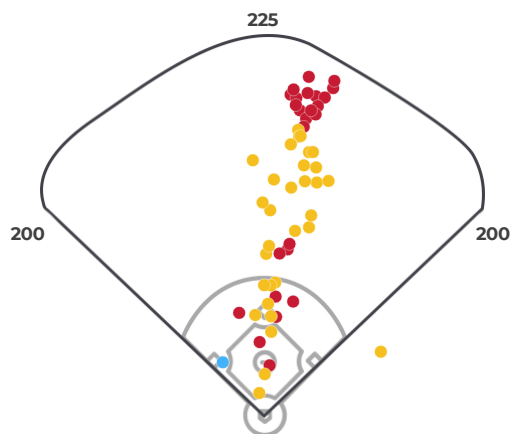
## HIT OUTCOME VS LA & EV



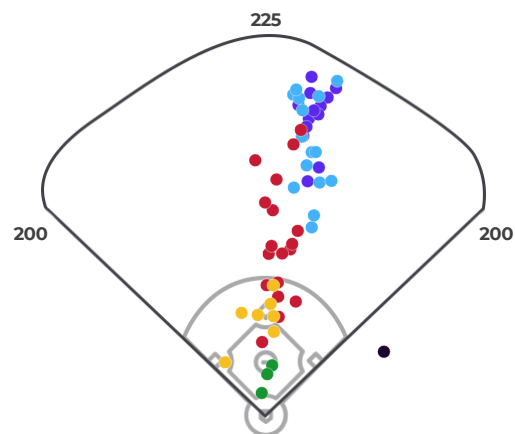
## HIT CLASSIFICATIONS VS LA & EV



## HIT OUTCOME



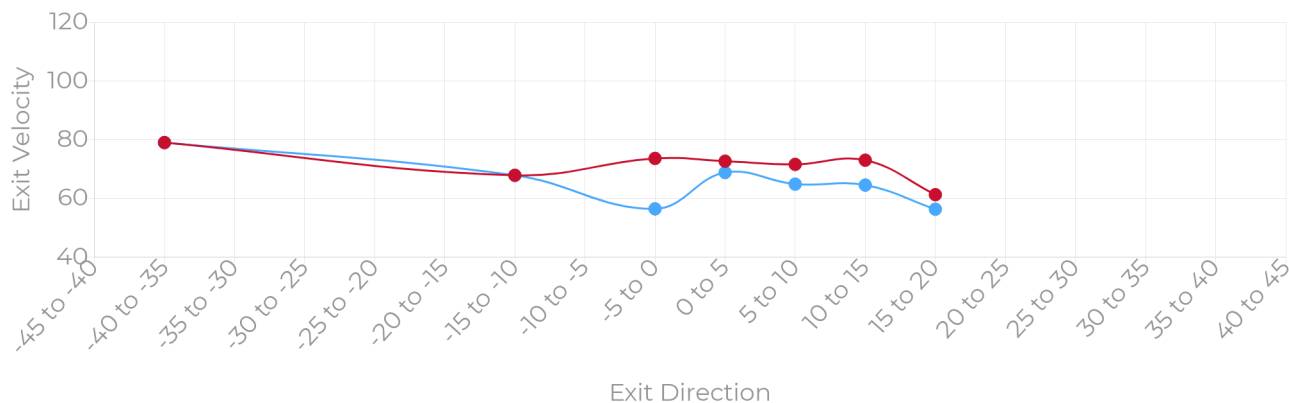
## HIT CLASSIFICATIONS



● Max EV ● Avg EV

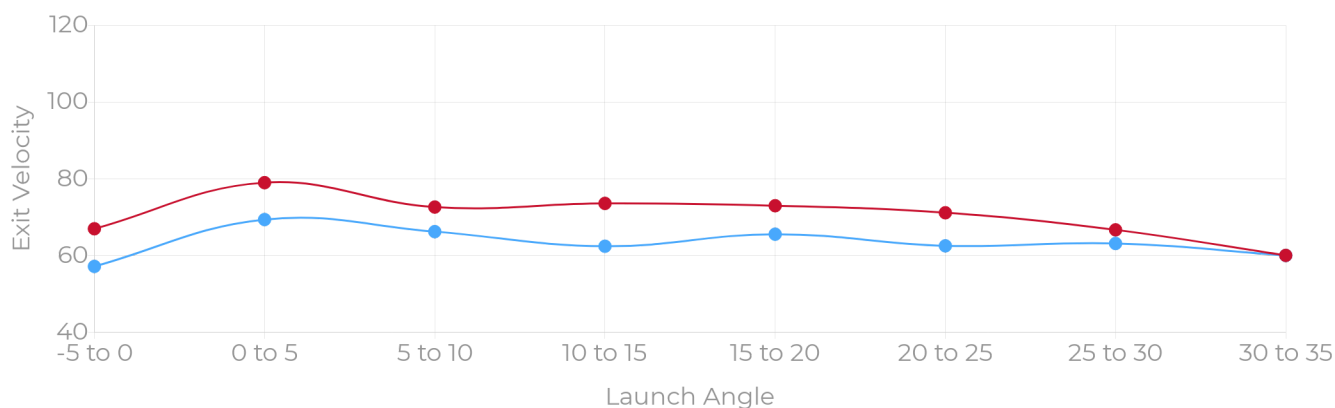
## MAX EV, AVG EV BY EXIT DIRECTION

Exit velocities are shown for all balls in play within the listed exit direction ranges.



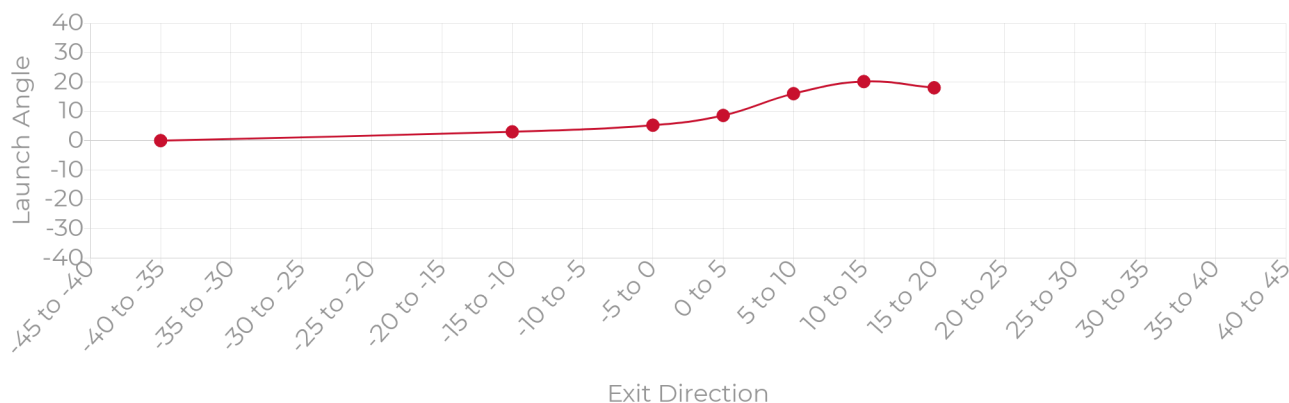
## MAX EV, AVG EV BY LAUNCH ANGLE

Exit velocities are shown for all balls in play within the listed launch angle ranges.



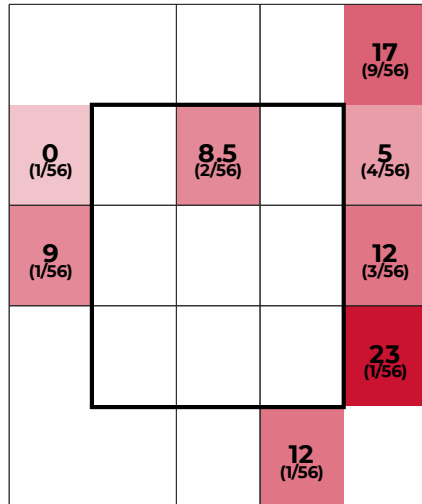
## LAUNCH ANGLE BY EXIT DIRECTION

Average launch angles are shown for all balls in play within the listed exit direction ranges.



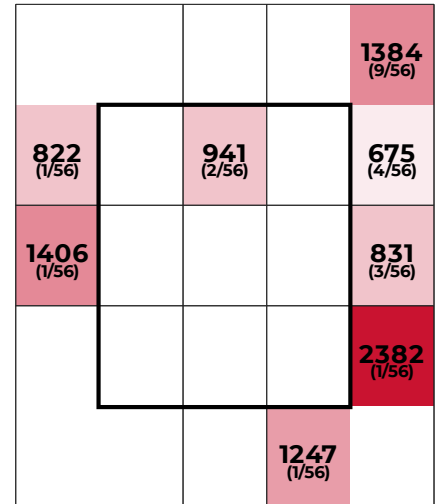
## STRIKE ZONE BREAKDOWN

### LAUNCH ANGLE



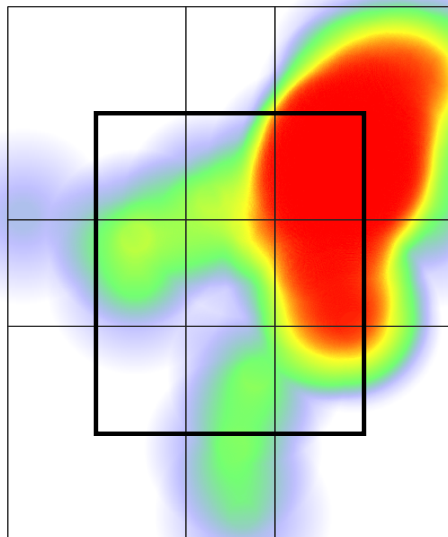
		AVG EV	AVG LA
HORIZONTAL	INNER THIRD	0	0
	MIDDLE THIRD	70.0	8.5
	OUTER THIRD	0	0
VERTICAL	UPPER THIRD	70.0	8.5
	MIDDLE THIRD	0	0
	LOWER THIRD	0	0

### SPIN RATE

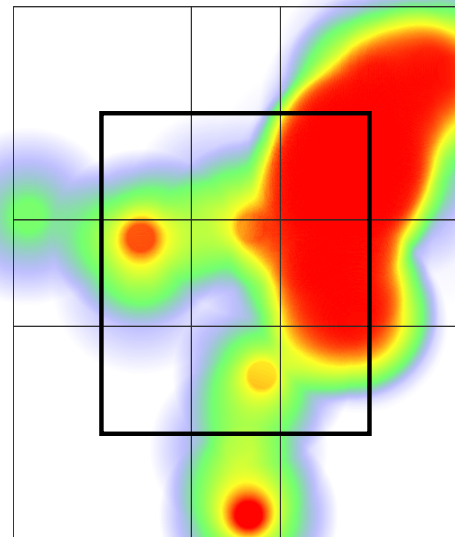


### EXIT VELOCITY

### XWOBA



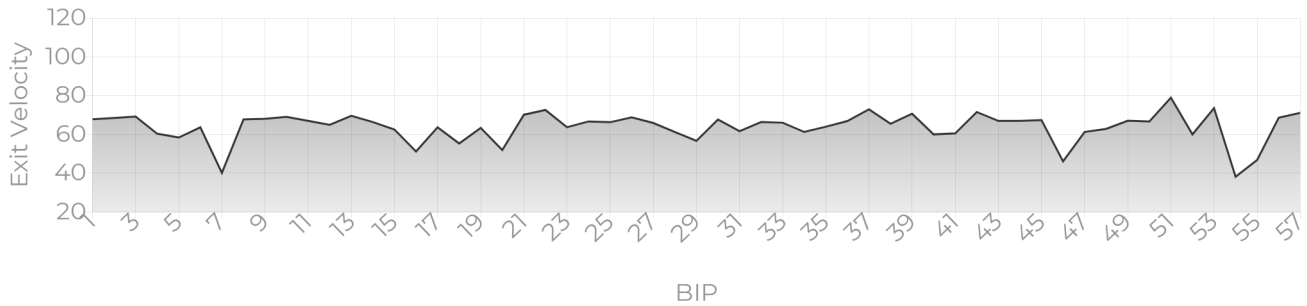
Catcher's POV



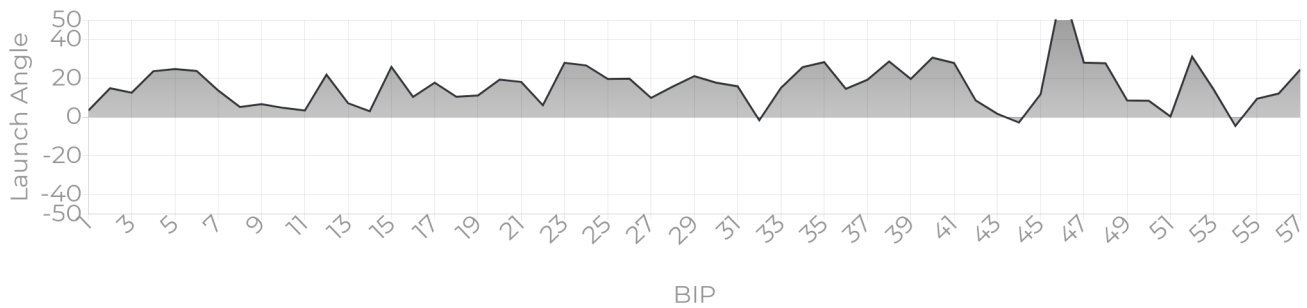
Catcher's POV

## PROGRESS REPORTS

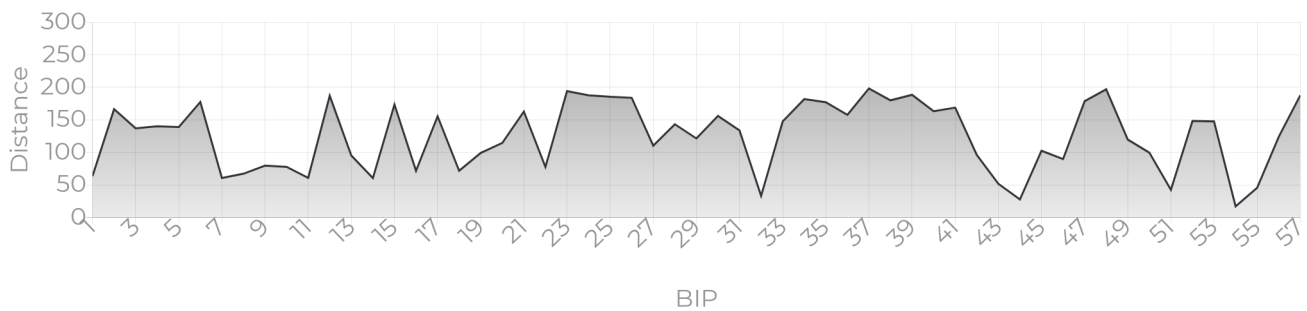
### EV TRACKER



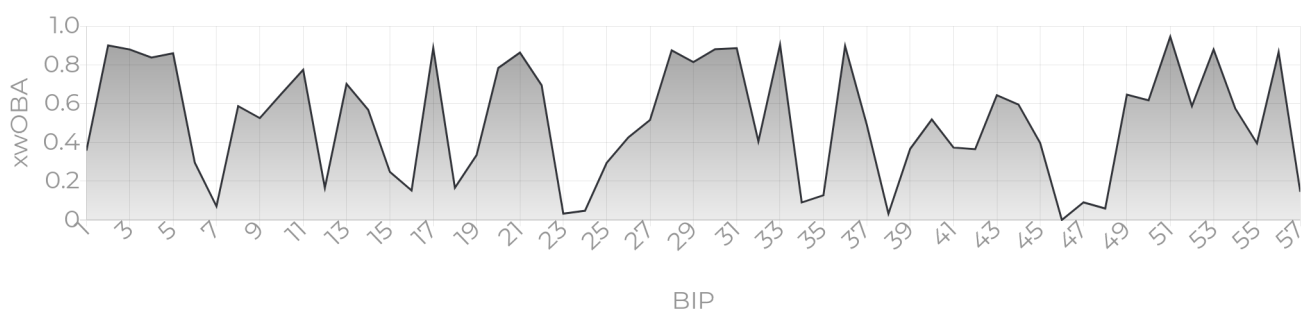
### LA TRACKER



### DISTANCE TRACKER



### XWOBA TRACKER



## XWOBA

Expected Weighted On Base Average is a term commonly used inside of the MLB taking Launch Angle and Exit Velocity to determine the Expected OBA and often compared to the Actual OBA. This provides a tool for Rapsodo to provide an instant analysis off of each BBE (Batted Ball Event). In the same way that each batted ball is assigned a Hit Classification, every batted ball has been given a single, double, triple and home run probability based on the results of comparable batted balls from MLB data — in terms of similar exit velocity and launch angle.

## BIP (BALLS IN PLAY)

Any ball hit within a range of -45 to 45 degree Exit Direction.

## HARD HIT %

Any ball hit within 10% of a player's Max Exit Velo.

## ROPES

Any Hard Hit Ball (within 10% of a player's Max Exit Velo) and hit between 10 and 20 degree Launch Angle.

## BOMBS

Any Hard Hit Ball (within 10% of a player's Max Exit Velo) and Hit with a 20+ Launch Angle.

## HIT CLASSIFICATIONS

**Dribbler:** A batted ball event with less than a 0 degree launch angle

**Ground Ball:** A batted ball event with a launch angle between 0 and 6 degrees

**Low Line Drive:** A batted ball event with a launch angle between 6 and 15 degrees

**High Line Drive:** A batted ball event with a launch angle between 15 and 24 degrees

**Fly Ball:** A batted ball event with a launch angle between 24 and 50 degrees

**Pop Up:** A batted ball event with a launch angle greater than 50 degrees