



HAYDEN KYNE

RANK

-

CLASS

2025

POSITION

C

HANDEDNESS

RHH



E-mail:

hayden.kyne2025@gmail.com

Age:

14



State:

231

School:

-



Height:

5' 7"

Weight:

155 lbs



Coach Name:

James Kyne

Facility Name:

Lady Magic- Walling 07

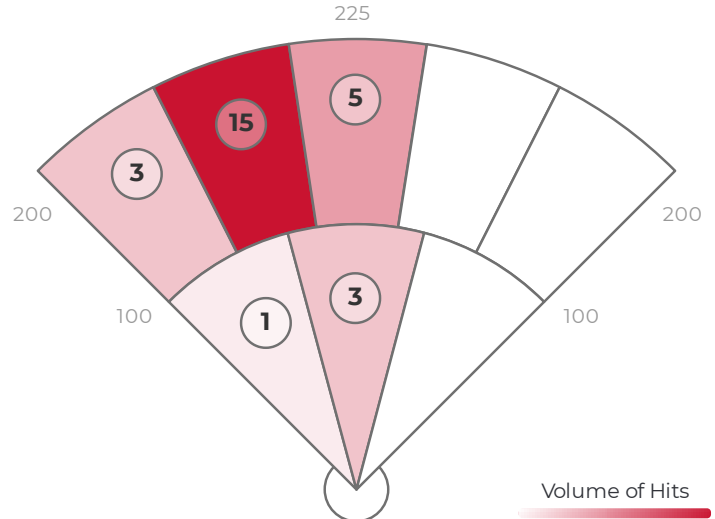
## DATA

	AVG	MAX	HARD HIT AVG
EXIT VELO	69.8	76.8	72.8
L. ANGLE	17.6	34.9	17.3
DIRECTION	-14.5	5.7	-21.0
DISTANCE	157	242	167
SPIN RATE	1133	3589	919

BATTING AVG	.630
XWOBA	.749
SLUGGING	1.148
HARD HIT %	51.9%
BOMBS %	18.5%
ROPES %	25.9%

## RAPSCORE

**R75**  
PRO



## ZONE BREAKDOWN

Zone	Volume of Hits	AVG LA	AVG EV	AVG RPM	AVG Distance
PULL	15/27	16	72	925	162
MIDDLE	12/27	19	67	1393	151
OPPO	0/27	-	-	-	-

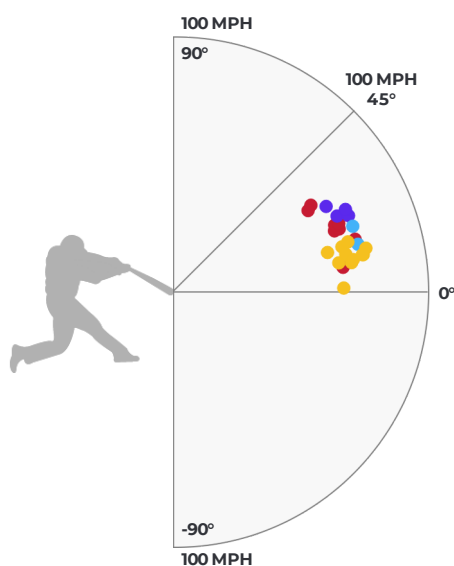
## HIT OUTCOME

Single	Double	Triple	Home Run	Field Out
40.7%	7.4%	0%	14.8%	37.0%

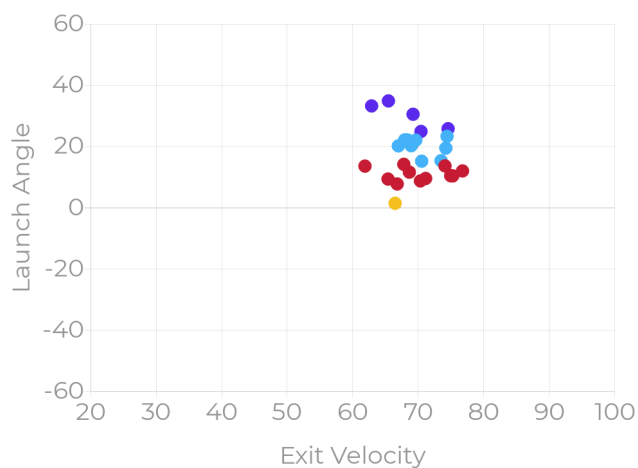
## HIT CLASSIFICATIONS

Dribbler	Ground	Low Line	High Line	Fly Ball	Pop Up
0%	3.7%	40.7%	37%	18.5%	0%

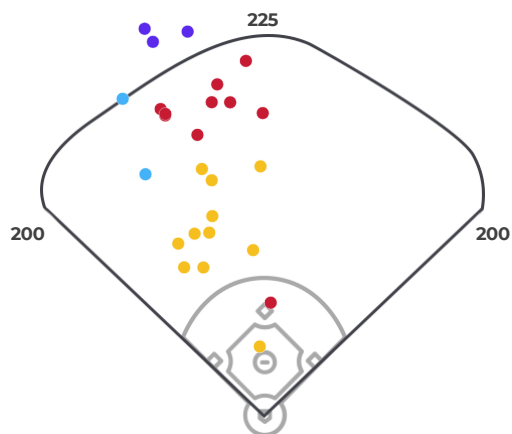
## HIT OUTCOME VS LA & EV



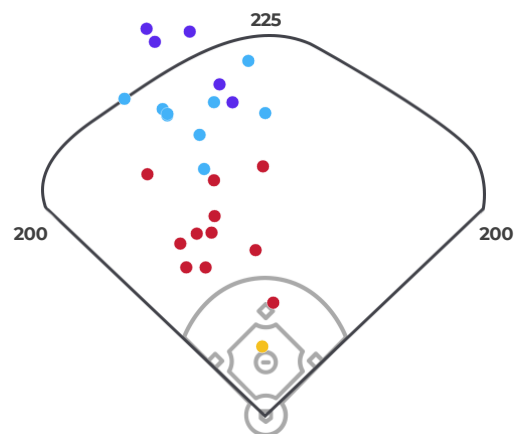
## HIT CLASSIFICATIONS VS LA & EV



## HIT OUTCOME



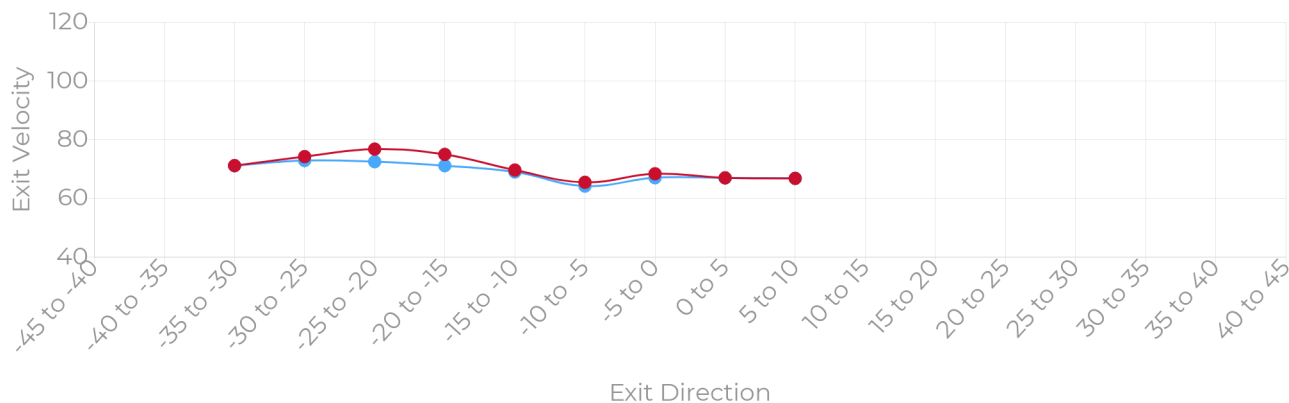
## HIT CLASSIFICATIONS



● Max EV ● Avg EV

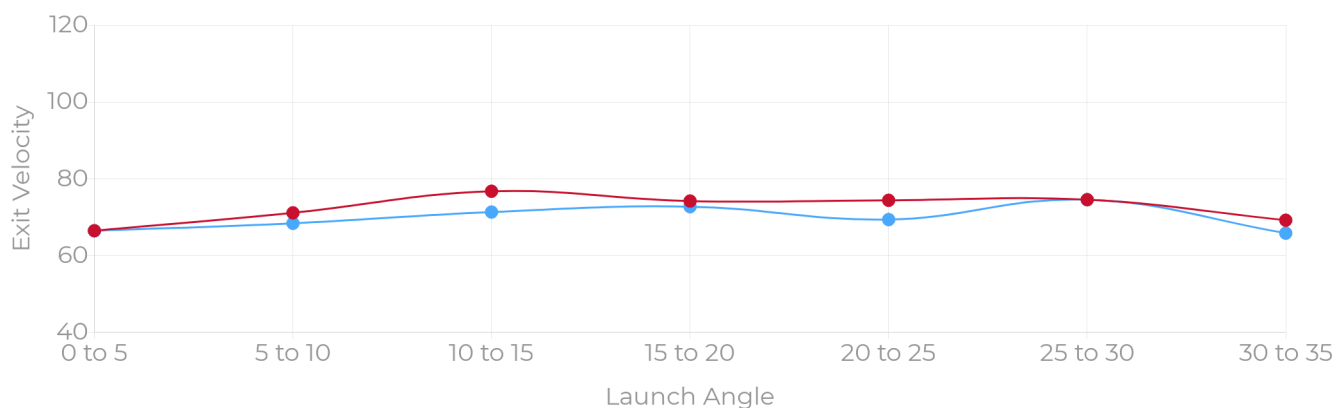
## MAX EV, AVG EV BY EXIT DIRECTION

Exit velocities are shown for all balls in play within the listed exit direction ranges.



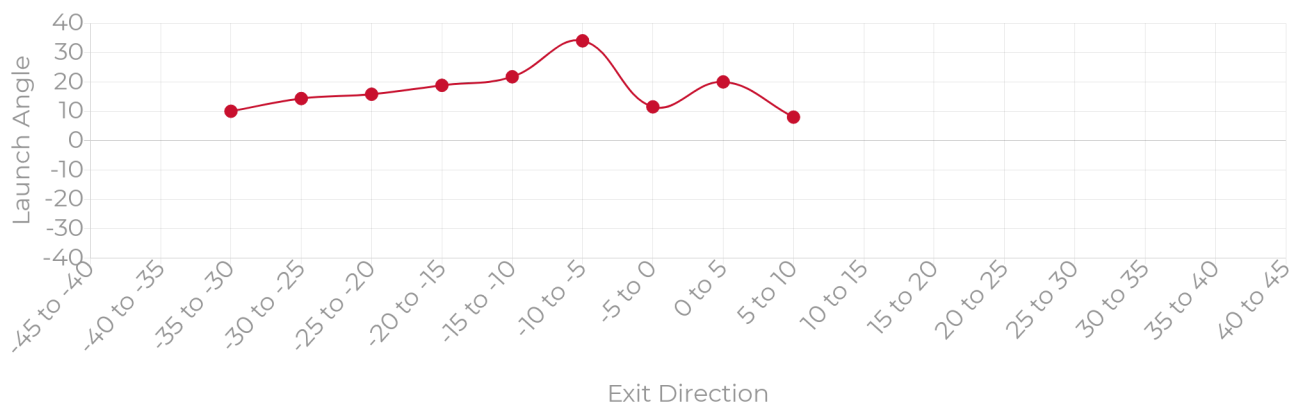
## MAX EV, AVG EV BY LAUNCH ANGLE

Exit velocities are shown for all balls in play within the listed launch angle ranges.



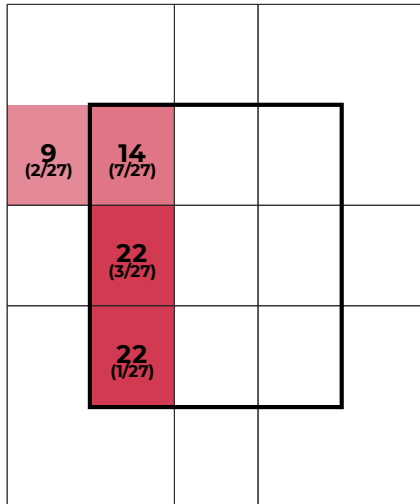
## LAUNCH ANGLE BY EXIT DIRECTION

Average launch angles are shown for all balls in play within the listed exit direction ranges.



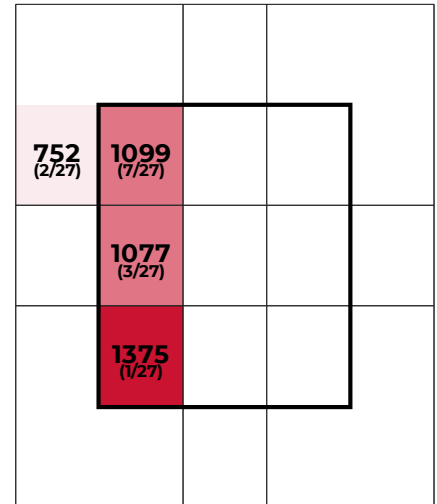
## STRIKE ZONE BREAKDOWN

### LAUNCH ANGLE



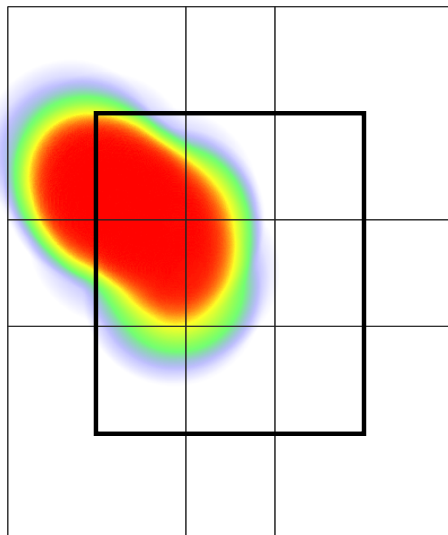
		AVG EV	AVG LA
HORIZONTAL	INNER THIRD	68.0	19.3
	MIDDLE THIRD	0	0
	OUTER THIRD	0	0
VERTICAL	UPPER THIRD	67.0	14.0
	MIDDLE THIRD	68.0	22.0
	LOWER THIRD	69.0	22.0

### SPIN RATE

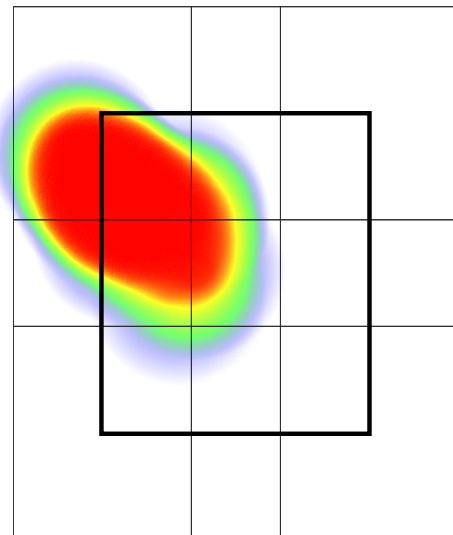


### EXIT VELOCITY

### XWOBA



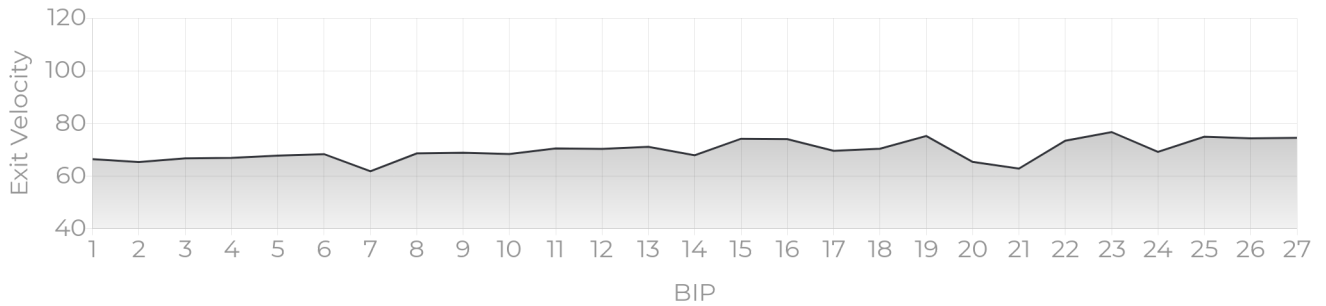
Catcher's POV



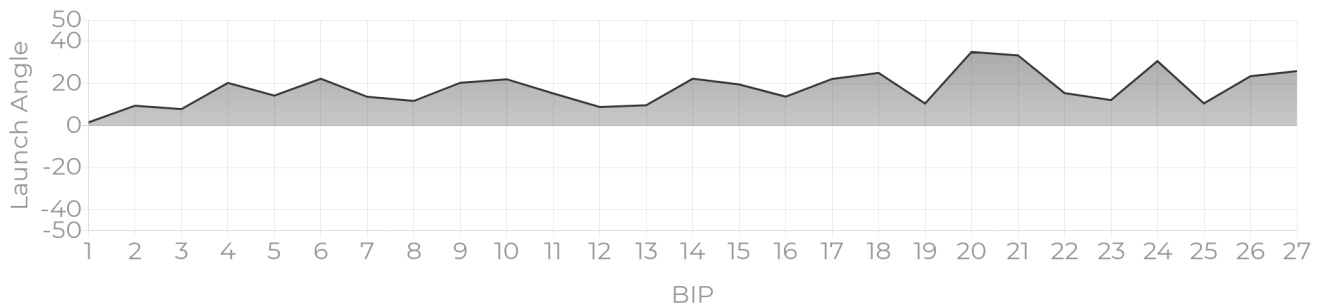
Catcher's POV

## PROGRESS REPORTS

### EV TRACKER



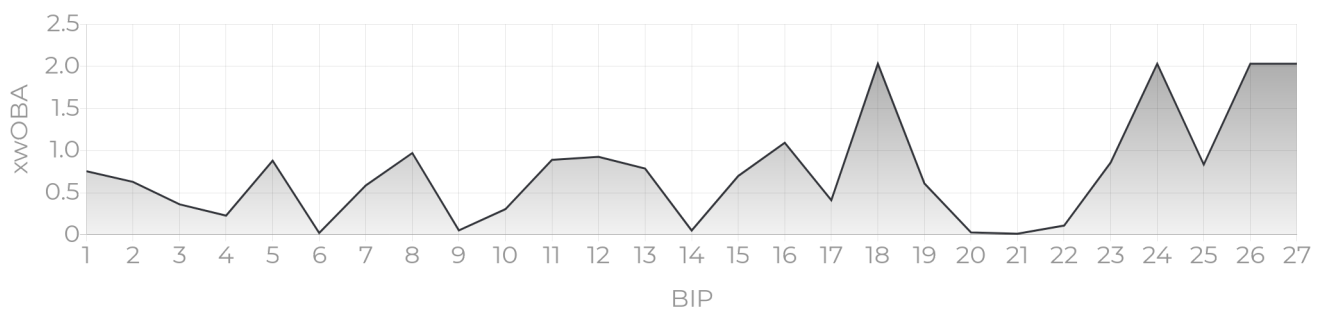
### LA TRACKER



### DISTANCE TRACKER



### XWOBA TRACKER



## XWOBA

Expected Weighted On Base Average is a term commonly used inside of the MLB taking Launch Angle and Exit Velocity to determine the Expected OBA and often compared to the Actual OBA. This provides a tool for Rapsodo to provide an instant analysis off of each BBE (Batted Ball Event). In the same way that each batted ball is assigned a Hit Classification, every batted ball has been given a single, double, triple and home run probability based on the results of comparable batted balls from MLB data — in terms of similar exit velocity and launch angle.

## BIP (BALLS IN PLAY)

Any ball hit within a range of -45 to 45 degree Exit Direction.

## HARD HIT %

Any ball hit within 10% of a player's Max Exit Velo.

## ROPES

Any Hard Hit Ball (within 10% of a player's Max Exit Velo) and hit between 10 and 20 degree Launch Angle.

## BOMBS

Any Hard Hit Ball (within 10% of a player's Max Exit Velo) and Hit with a 20+ Launch Angle.

## HIT CLASSIFICATIONS

**Dribbler:** A batted ball event with less than a 0 degree launch angle

**Ground Ball:** A batted ball event with a launch angle between 0 and 6 degrees

**Low Line Drive:** A batted ball event with a launch angle between 6 and 15 degrees

**High Line Drive:** A batted ball event with a launch angle between 15 and 24 degrees

**Fly Ball:** A batted ball event with a launch angle between 24 and 50 degrees

**Pop Up:** A batted ball event with a launch angle greater than 50 degrees