



HAYDEN KYNE

RANK

-

CLASS

2025

POSITION

C

HANDEDNESS

RHH



E-mail:

hayden.kyne2025@gmail.com

Age:

14



State:

231

School:

-



Height:

5' 7"

Weight:

155 lbs



Coach Name:

James Kyne

Facility Name:

Lady Magic- Walling 07

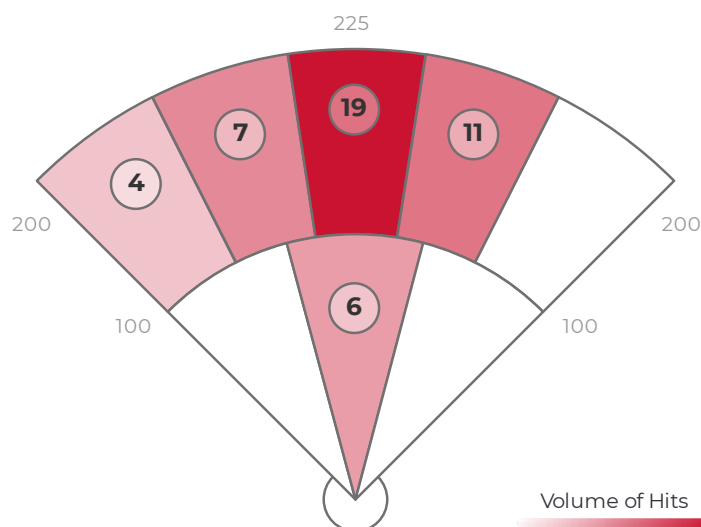
DATA

	AVG	MAX	HARD HIT AVG
EXIT VELO	67.3	77.0	71.6
L. ANGLE	20.3	34.7	18.9
DIRECTION	-0.7	13.9	-6.5
DISTANCE	160	234	175
SPIN RATE	1216	3571	831

BATTING AVG	.553
XWOBA	.486
SLUGGING	.681
HARD HIT %	27.7%
BOMBS %	8.5%
ROPES %	17.0%

RAPSCORE

R71
PRO



ZONE BREAKDOWN

Zone	Volume of Hits	AVG LA	AVG EV	AVG RPM	AVG Distance
PULL	9/47	22	69	891	182
MIDDLE	38/47	20	67	1293	154
OPPO	0/47	-	-	-	-

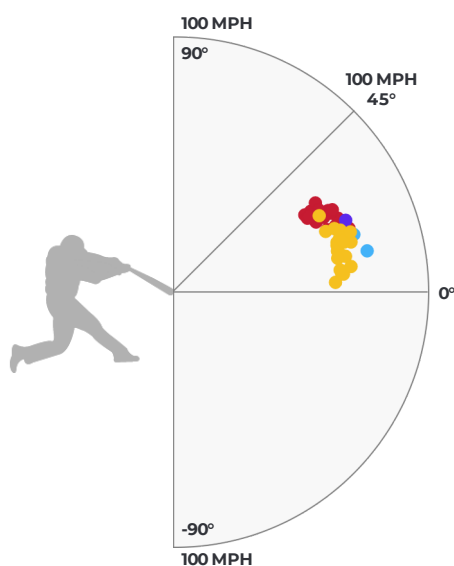
HIT OUTCOME

Single	Double	Triple	Home Run	Field Out
46.8%	6.4%	0%	2.1%	44.7%

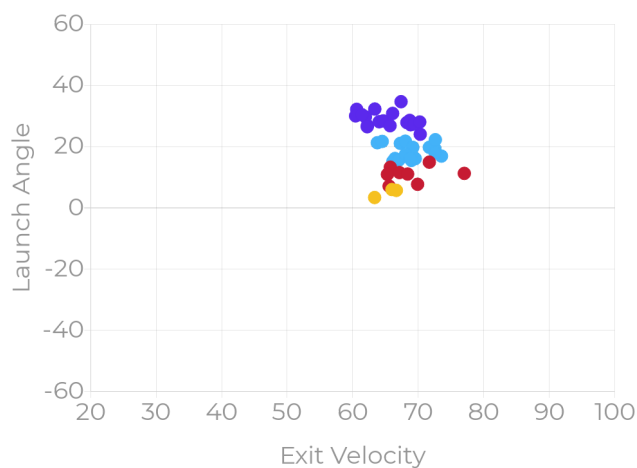
HIT CLASSIFICATIONS

Dribbler	Ground	Low Line	High Line	Fly Ball	Pop Up
0%	6.4%	17%	38.3%	38.3%	0%

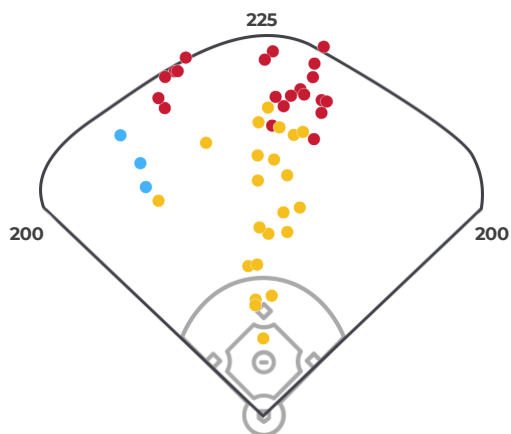
HIT OUTCOME VS LA & EV



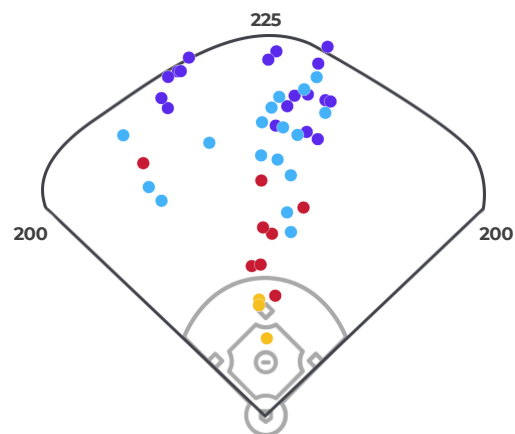
HIT CLASSIFICATIONS VS LA & EV



HIT OUTCOME



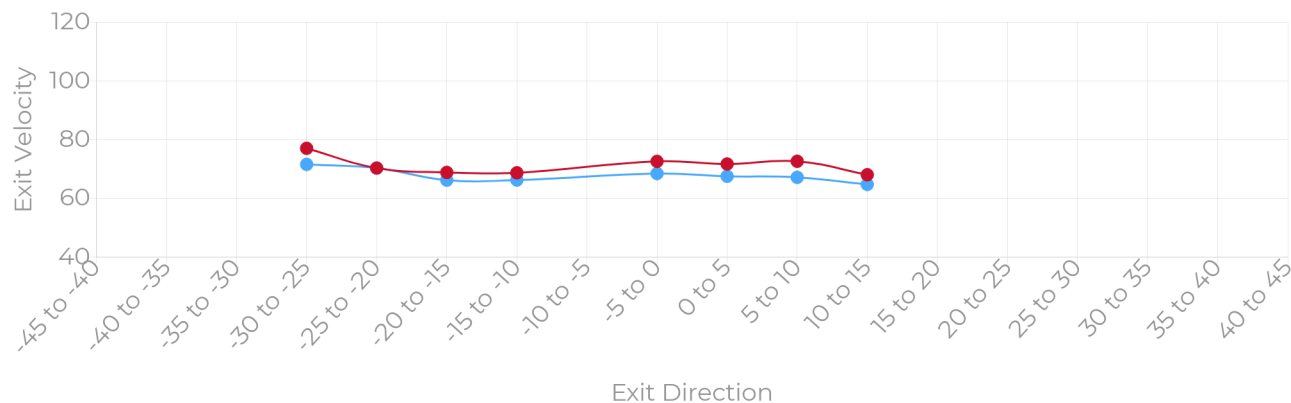
HIT CLASSIFICATIONS



● Max EV ● Avg EV

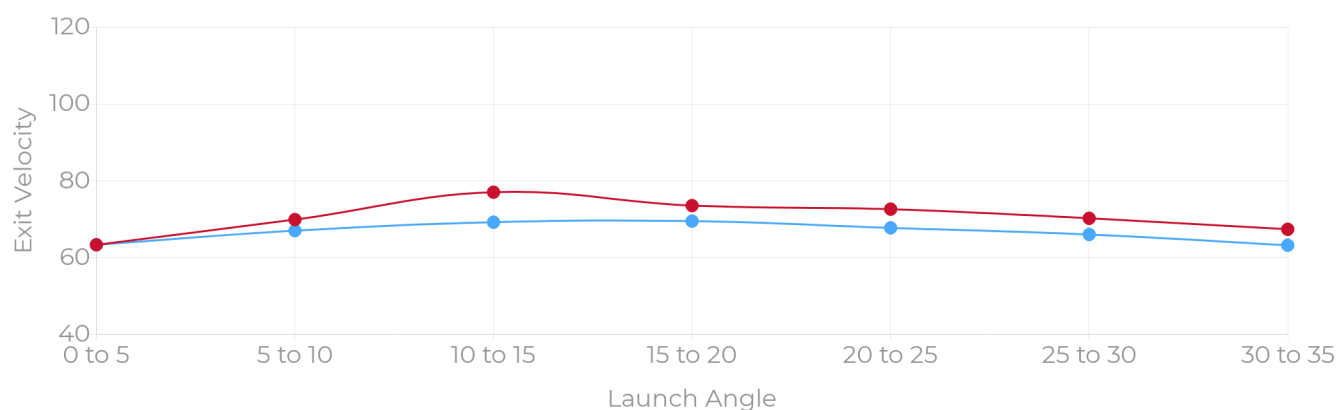
MAX EV, AVG EV BY EXIT DIRECTION

Exit velocities are shown for all balls in play within the listed exit direction ranges.



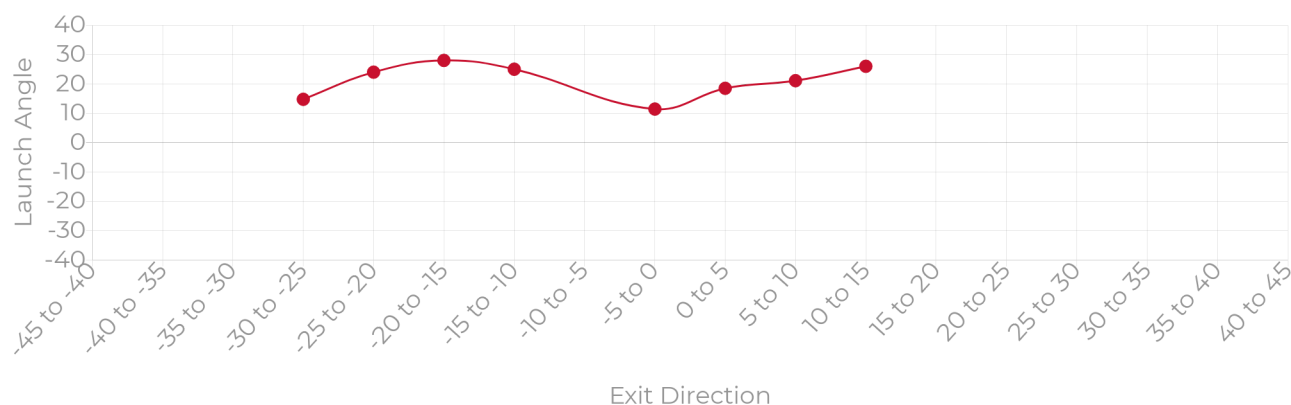
MAX EV, AVG EV BY LAUNCH ANGLE

Exit velocities are shown for all balls in play within the listed launch angle ranges.



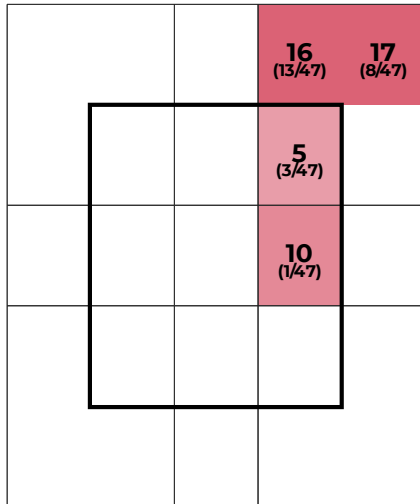
LAUNCH ANGLE BY EXIT DIRECTION

Average launch angles are shown for all balls in play within the listed exit direction ranges.



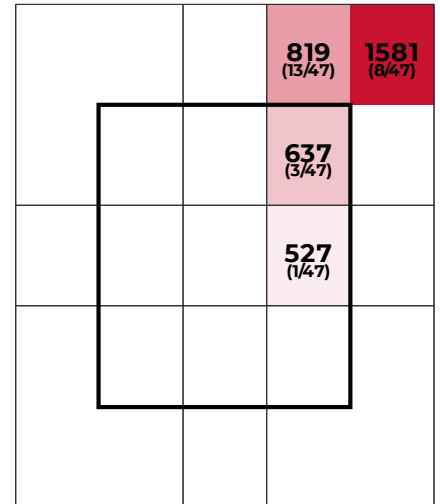
STRIKE ZONE BREAKDOWN

LAUNCH ANGLE



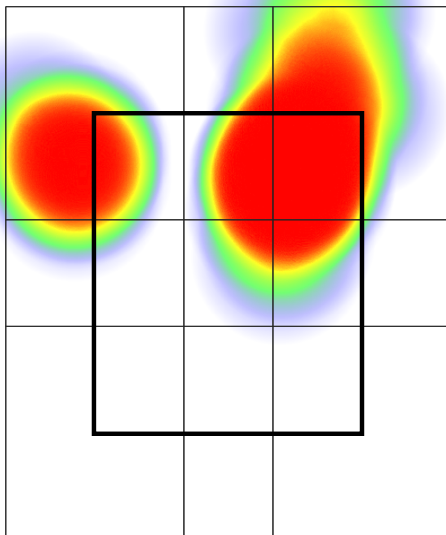
		AVG EV	AVG LA
HORIZONTAL	INNER THIRD	0	0
	MIDDLE THIRD	0	0
	OUTER THIRD	65.5	7.5
VERTICAL	UPPER THIRD	66.0	5.0
	MIDDLE THIRD	65.0	10.0
	LOWER THIRD	0	0

SPIN RATE

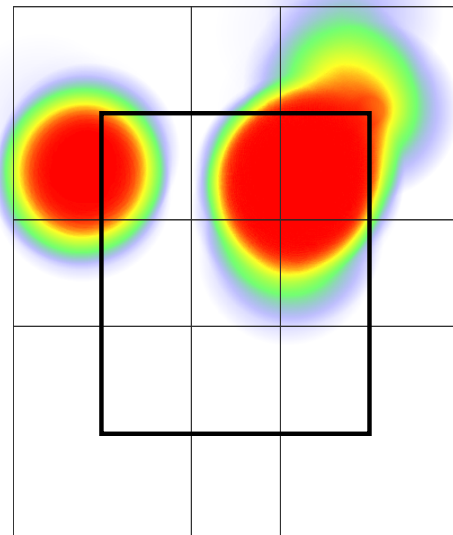


EXIT VELOCITY

XWOBA



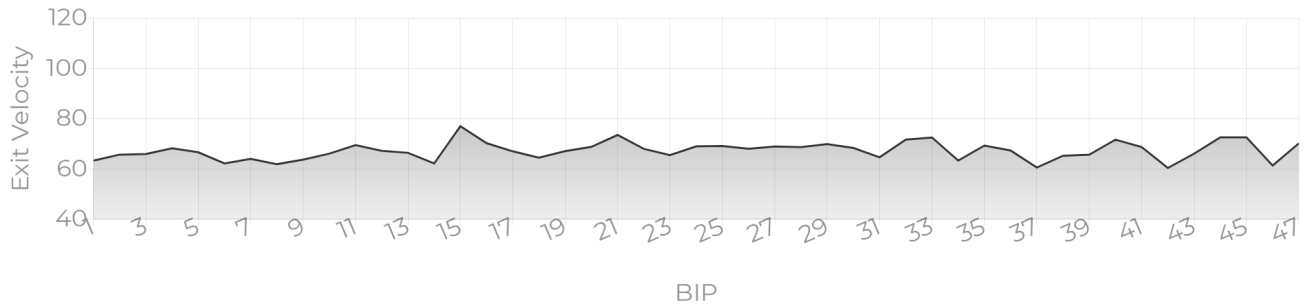
Catcher's POV



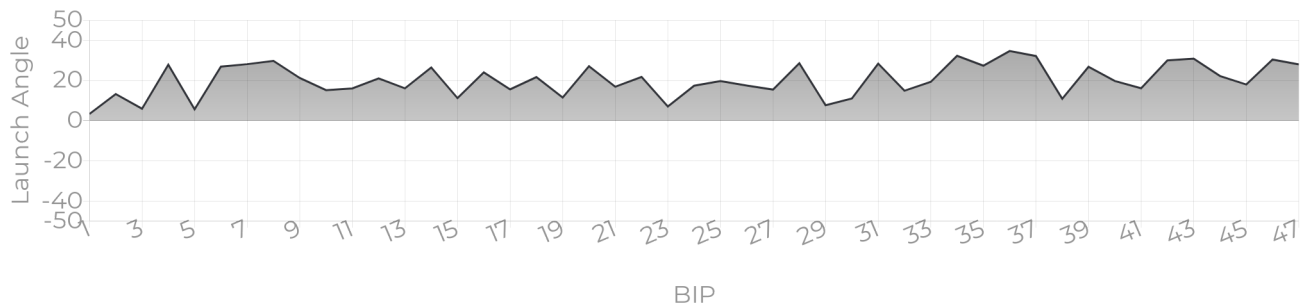
Catcher's POV

PROGRESS REPORTS

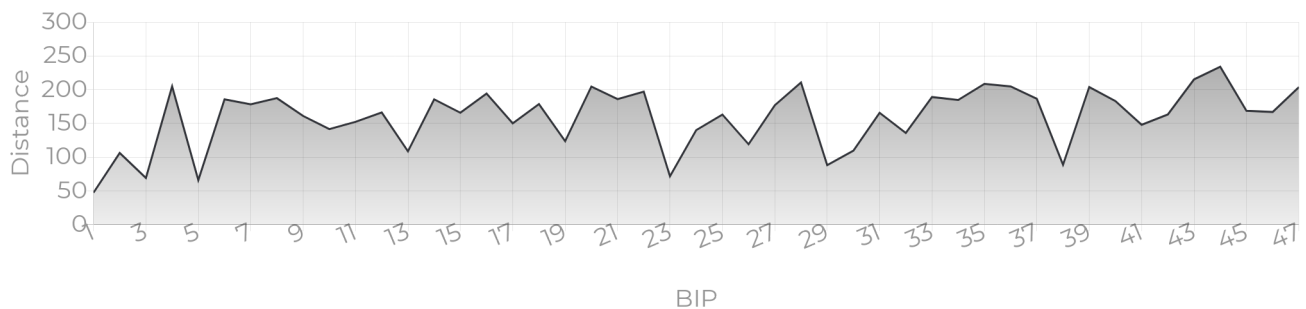
EV TRACKER



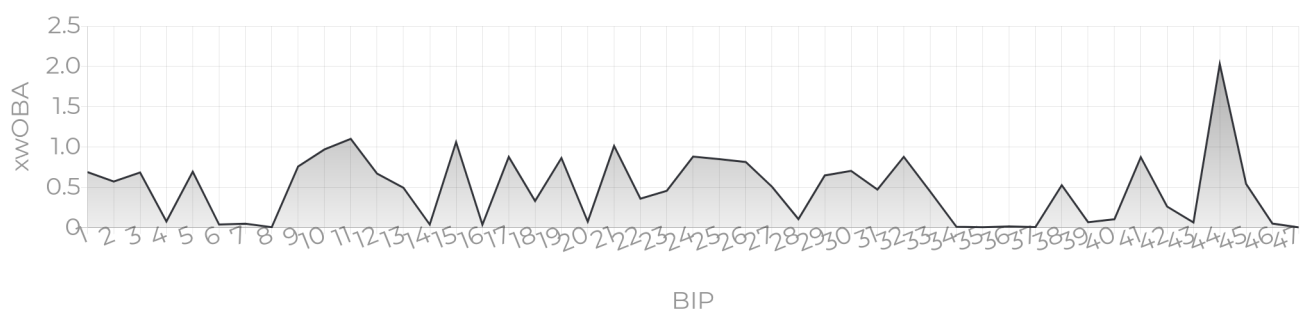
LA TRACKER



DISTANCE TRACKER



XWOBA TRACKER



XWOBA

Expected Weighted On Base Average is a term commonly used inside of the MLB taking Launch Angle and Exit Velocity to determine the Expected OBA and often compared to the Actual OBA. This provides a tool for Rapsodo to provide an instant analysis off of each BBE (Batted Ball Event). In the same way that each batted ball is assigned a Hit Classification, every batted ball has been given a single, double, triple and home run probability based on the results of comparable batted balls from MLB data — in terms of similar exit velocity and launch angle.

BIP (BALLS IN PLAY)

Any ball hit within a range of -45 to 45 degree Exit Direction.

HARD HIT %

Any ball hit within 10% of a player's Max Exit Velo.

ROPES

Any Hard Hit Ball (within 10% of a player's Max Exit Velo) and hit between 10 and 20 degree Launch Angle.

BOMBS

Any Hard Hit Ball (within 10% of a player's Max Exit Velo) and Hit with a 20+ Launch Angle.

HIT CLASSIFICATIONS

Dribbler: A batted ball event with less than a 0 degree launch angle

Ground Ball: A batted ball event with a launch angle between 0 and 6 degrees

Low Line Drive: A batted ball event with a launch angle between 6 and 15 degrees

High Line Drive: A batted ball event with a launch angle between 15 and 24 degrees

Fly Ball: A batted ball event with a launch angle between 24 and 50 degrees

Pop Up: A batted ball event with a launch angle greater than 50 degrees