



LIFT
FOILS
CATALOG



21

1

TABLE OF CONTENTS

03	—	ABOUT LIFT
04	—	A NOTE FROM NICK LEASON
05	—	THE LIFT eFOIL
09	—	2021 eFOILS
		10 LIFT3
		12 LIFT3 Sizes
		16 LIFT3 Elite COMING SOON
		19 9 ACCESSORIES
		20 NEW APP
	—	2021 WINGS LINEUP
		22 SURF V2 WINGS
		24 HIGH ASPECT WINGS
		26 TAIL WINGS
29	—	2021 CLASSIC FOILS
		30 SURF BOARDS
		32 WING BOARDS
34	—	2021 MASTS
36	—	LIFT AMBASSADORS
38	—	RECENT PRESS
39	—	FLY BEFORE YOU BUY
40	—	eFOILING AROUND THE WORLD
43	—	CONTACT US

ABOUT LIFT

Lift Foils is the original eFoil creator and the leading innovator in top-performing hydrofoil technology.

Family-run and with over a decade of experience, our company is made up of engineers who ride what they make. This keeps us directly on the limitless quest for the next frontier in watersports.

All of our products are in stock and available to ship worldwide.



A NOTE FROM LIFT FOILS FOUNDER NICK LEASON

To those close to the foiling community, it may seem we've entered the mainstream, but I believe that the sport is just getting started. We're finally starting to see small groups of surfers adopt the foil for their small wave needs. In wind sports, wing foiling is officially taking over. Kitesurfers are making a complete move, and windsurfers who haven't contemplated rigging a sail in the last 20 years are now coming out of retirement to start winging on a foil board. In the world of electric, more and more eFoils are starting to pop up in the wild and as houseboat owners cruise around with multiple outdated jet skis on the aft deck, they ask themselves, "Why don't we have one of those?" The first person foiling was a kook, when it was two people they were weird, and now, with gangs of foilers at local breaks and WhatsApp groups excitedly messaging each other about one-foot surf, we have ourselves a movement. If you look closely at the strange trends, you can start to visualize the evolution of a new sport with multiple segments.

I see two advancement trends in foiling. The first is the early advocates, the ones who have been on the edge of the sport for years, who are going to achieve levels of mastery that are simply beyond what we can even comprehend today. I see it now with riders we work with at Lift. Some are only a few years into foiling, some are still in high school, but they're doing flips and tackling waves that seemed insurmountable to pioneers just a year ago. I firmly believe these riders are going to be flying out of barrels, riding huge waves at incredible speeds, and doing acrobatics similar to what we see in the world of snowboarding. Have a look at what people achieve behind a boat on an Air Chair and then combine that with fearless young surfers on large waves, light equipment, and foot straps. These young guns may even adopt an eFoil as the tool needed to get them launched into such surf...

The second is that we're going to see the infrastructure building quickly for further mainstream adoption, education, and enablement of new riders in all types of foiling. This is going to mean more brands jumping into the sport, more schools and lesson opportunities, and an increased desire from people of all skill levels to try foiling. The multiple branches of foiling—surf, SUP, wake, kite, wingdings, eFoils—are what will create so much attention and what will offer an avenue for everyone. We've signed up hundreds of schools and rental areas to represent and showcase Lift eFoils in the last two years alone, and that speaks to the excitement that's going to continue across all areas of the sport.

Foil designs and equipment will continue to evolve. Wing designs will start to be refined for more specific applications. Just as you have different surfboards for different kinds of surfing, the same is true of hydrofoil designs. I think the most exciting will be the adoption of smaller wings as foilers discover an incredible amount of speed and maneuverability in more powerful surf. Glider wings will allow for the endless riding of small waves and the ability to tap into open ocean swells and chop. It will no longer be people riding at specific breaks but instead riding their entire coastline...

Winging will allow for a new wave of excitement in the world of sailing as new people take an interest once again in the ancient art of riding the wind. What's most exciting is that "non-surfers" will learn to wing foil and surf open ocean swells in a matter of a few lessons—something that traditional surfers have never dreamed of. Skilled sailors will create rigid wings (true foils) that allow them to reach new speeds and a whole new category of racing. The world of electric foiling is endless and new crafts will appear that will excite just about everyone. The combination of tech and tradition will soon meld into new levels of the sport. Just wait and see what we have in store for you.

At the end of the day, it's no longer a question of whether or not foiling will become a mainstream sport; we're past that phase. It's a question of how far we can take it. I have so many ideas flowing that as soon as I finish one new design, I'm seeing three more in front of it. The potential is crazy, and as the community continues to expand, everyone will contribute more and more to the development of the sport. That's the most exciting part of it all: community, and finding new levels of stoke with your peers, and sharing new ideas that shape the next level of surfing for everyone.

—Nick Leason, CEO and Founder of Lift Foils

© Foiling Magazine, 2020

THE LIFT eFOIL

The Lift eFoil leverages advances in lithium battery technology and wireless communication to create an experience that's a mix of surfing, flying, and deep-powder snowboarding.

A powerful electric motor, a state-of-the-art battery, and high-performance carbon-fiber boards, foils, and wings combine to create the world's smallest watercraft. Riders of all athletic capabilities can glide above any body of water, without needing to be propelled by wind or waves.

EXPERIENCE
THE POWER OF FLIGHT



LIFT eFOIL

SUPERIOR TECHNOLOGY & DESIGN

CONSTRUCTION

Every decision that goes into putting together your gear is made with durability and reliability in mind.

Our composite construction offers the perfect flex pattern along with toughness and weight reduction.

Your equipment will hold up to whatever level of grind you want to subject it to.

Guaranteed.

Bonus: the wings are interchangeable so you can swap out different designs to create whatever type of ride you're looking for.

Watch our construction video



HOW IT WORKS

The eFoil uses an advanced lithium-ion battery to power a silent electric motor that's mounted on an all-carbon-fiber hydrofoil. Because it's all-electric, it doesn't emit emissions or noise and requires minimal maintenance.



- All-carbon fiber hydrofoil
- Wireless Bluetooth hand controller
- Advanced lithium-ion battery to power a silent electric motor

LIFT eFOIL

PARTS & COMPONENTS



OUR LITHIUM-ION BATTERY

We worked with some of the world's top engineers to create a custom lithium-ion battery pack that's dependable and safe in a rugged marine environment.

OUR BATTERY:

- is waterproof and fully submersible and can be easily interchanged and recharged.
- ensures your safety with the most sophisticated internal components and reliable automotive-grade manufacturing.
- weighs 29 lbs.



OUR WIRELESS HAND CONTROLLER

Our patented Bluetooth hand controller gives the rider complete control without the constraints of attachment for a more organic, effortless ride.

OUR CONTROLLER:

- offers the most refined throttle design possible for control at your fingertips.
- uses the most powerful wireless Bluetooth technology available.
- is sealed and completely waterproof.
- floats.
- features automatic power shut-off if the lever is released or if it is submerged in water.
- has a display screen with battery charge levels, power settings, alerts, and multiple user profiles.



OUR PROPELLERS

Our propellers are custom milled from a block of the highest-grade aluminum. They're also hand-polished, balanced, and treated for longevity and marine use.

They offer the ultimate thrust- to- energy ratio to increase battery life and deliver power and speed while enhancing smoothness and minimizing noise.

OUR MOTOR

Our motor is sleek and hydrodynamic for reduced drag in the water. Its design is a direct drive with minimal mechanical components (no gearbox needed) and offers maximum torque and response without making any noise.

OUR PROPULSION SYSTEM

Our propulsion system is the most powerful and durable on the market. It's liquid-cooled and built to run all day, every day. Cruise calmly or tow your friends. Whatever you're looking to do, we've got you covered.

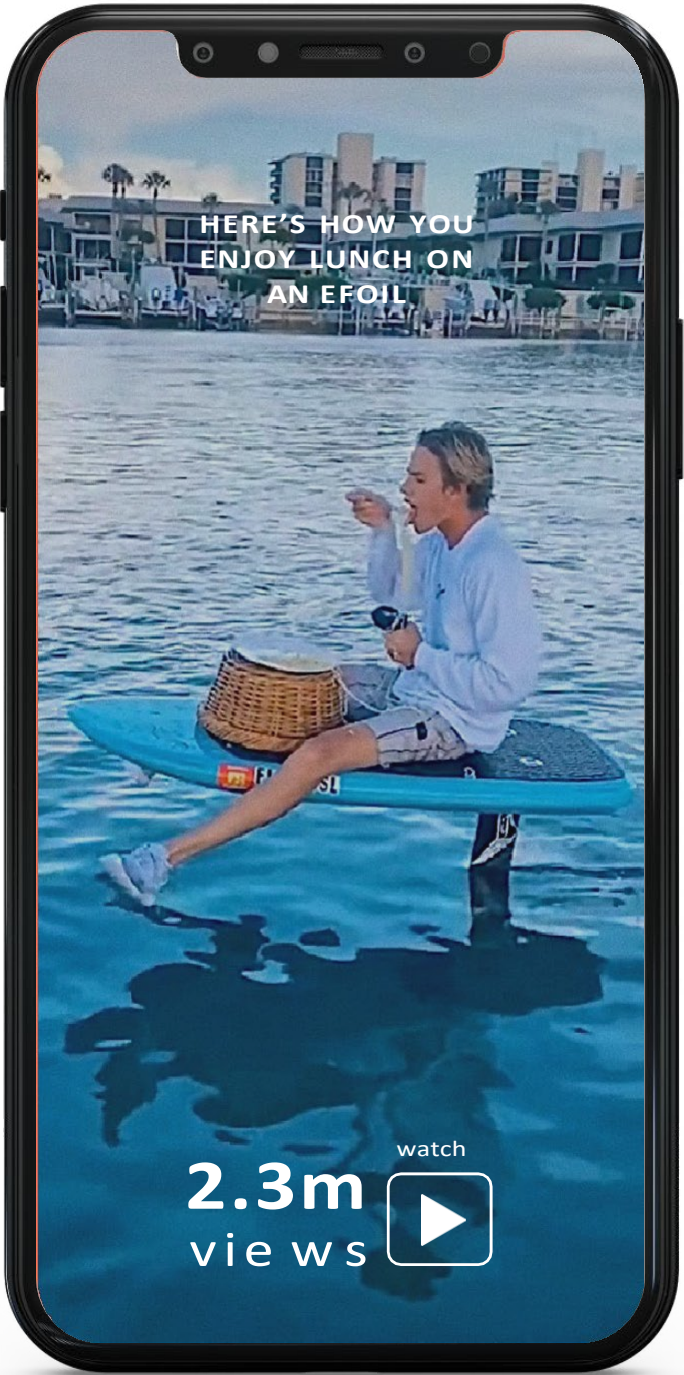
EFOILING TAKES OFF ACROSS THE INTERNET



OMEIR SAEED
@om eir _sa eed



BRIAN GRUBB
@br iank grubb



JAMES MCGRATH
@itsjam esm cgr ath

THE
2021
eFOILS



LIFT 3

INTRODUCING THE NEW GENERATION OF LIFT eFOIL

Our next-generation LIFT3 board lineup combines Lift Foils' past with a look into the future.

After three years of board design and extensive customer feedback, we've kept some of the most popular features while adding more freedom into the overall ride—all while improving weight, durability, and ride time.



LIFT3 eFOIL

WHAT'S NEW?

REFINED SHAPE

We redesigned our edges and water release points for a smooth and stable ride, making it easier for anyone to get started on a smaller board.

With the reduced length and decreased mass in the board's nose, there's less swing weight when carving a turn from side-to-side, so the rider feels enhanced response and more control. The result: a board that offers the best combination of stability and performance, and a whole lot more fun.

LIGHTER AND STRONGER CARBON FIBER

We've redefined the construction of our boards, completely evolving the old processes of a 100-year-old surfing industry into something modern and high-tech. As we dug deeper into a new design methodology, we ended up saying,

“What the hell, why not?”

Our boards are built with highly refined steel tools to forge carbon fiber parts at extreme temperatures and heat.

This process is used to create the most luxurious and advanced products on the market, including top automobiles. We're the only eFoil company that uses it too.

The result is a unique marbled carbon fiber that's lighter and 50% stronger than our previous models.
Bonus: it looks incredible.

LONGER AND FASTER RIDES

The LIFT3 allows you to ride for two hours at >30mph on a 90-minute charge, for the longest and fastest ride yet.



LIFT3 eFOIL

SIZES



All Lift Foils eFoils come with a 2-year warranty.

4'2 Pro

4'2 x 23.5" x 59 Liters

Max weight supported: 220 lbs.

Our 2021 Pro design is a fair amount smaller than last year's Pro model, but it's easier to dominate thanks to the LIFT3's updated design features. The small size might seem intimidating at first glance, but riders worldwide have had nothing but success in getting up onto the foil.

Anybody who rides the pro board has a hard time looking back—the sensation is otherworldly.

This board is everything foiling should be and illustrates the direction in which the sport is going. Its compact size makes you feel like you're flying on nothing at all and the response in its carve is the most liberating feeling you can have on the water.

The lightest board in the range, it's easy to handle and transport.

Wing Combos: Everything Works

- 150 Surf V2 is a responsive and fast option.
- 200 Surf V2 will offer all-around cruising and efficiency.
- 200 High Aspect will glide forever if you're looking for long-distance or some swell riding with the folding prop.
- Tail Wings: 38 Surf V2 is the standard. Try the 32 Glide for extra speed if you want to make it a super pro.

AVAILABLE COLORS:



CARBON
BLACK

TEXTURED
WHITE

TEXTURED
BLUE

LIFT3 eFOIL

SIZES



All Lift Foils eFoils come with a 2-year warranty.

4'9 Sport

4'9 x 25" x 70 Liters

Max weight supported: 250 lbs.

This is a shop favorite and our go-to recommendation for eFoilers, whether you're new to the sport or looking to upgrade from a previous generation.

The 4'9 Sport offers the optimal balance between stability and performance. If you want a board for growing your skills that also lets you share with friends and family, look no further.

This board is a perfect size and shape for just about all of your foiling needs and offers easy transport and handling.

Wing Combos

- The 200 Surf V2 is our standard recommendation.
- Try the 150 Surf V2 if you want a faster, livelier ride.
- The 250 Surf offers extra stability and low-speed riding if you're a larger rider who still wants to play with the loose turning of a smaller board.
- Tail Wings: 38 Tail will be a bit sportier. 48 Tail will have more stability.

AVAILABLE COLORS:



CARBON
BLACK

TEXTURED
WHITE

TEXTURED
BLUE

LIFT3 eFOIL

SIZES



All Lift Foils eFoils come with a 2-year warranty.

5'4 Cruiser

5'4 x 28" x 88 Liters
Max weight supported: 275 lbs.

At 5'4," this board is still quite short but offers all the stability that any rider could want.

When it's up in the air, it carves a beautiful turn that locks in with confidence. If you're new to watersports, this is a terrific option.

Wing Combos

- The 200 Surf V2 / 48 Surf V2 offers a wide variety of experiences to any rider.
- Try the 250 Surf V2 / 48 Surf V2 if you're a larger rider or if you're interested in rising out of the water all the time.

AVAILABLE COLORS:



CARBON
BLACK

TEXTURED
WHITE

TEXTURED
BLUE

LIFT3 eFOIL

SIZES



All Lift Foils eFoils come with a 2-year warranty.

5'9 Explorer

5'9 x 31" x 105 Liters
Max weight supported: 300 lbs.

The LIFT3 Explorer has maximum volume in a more stable and manageable size than its predecessor, the 6'2 Explorer.

Want to teach 10 friends how to foil on one battery charge? Or maybe your grandparents want to ride too? No problem if you're on the 5'9 Explorer! The Explorer lets everyone experience the sensation of flying over water, even without previous experience or watersports know-how.

Wing Combos

- The 250 Surf V2 / 48 Surf V2 offers absolute control and low-speed flying.
- Try the 300 Surf V2 (aka the 300 Sea Pig). It's an almost comically large wing size and everyone at Lift loves it. It's a perfect tool for learning how to foil and every school should have one.

AVAILABLE COLORS:



CARBON BLACK

TEXTURED WHITE

TEXTURED BLUE

COMING SOON

LIFT3 ELITE

LIFT INTO THE FUTURE
WITH THE ULTIMATE
eFOIL EXPERIENCE

Many riders will have incredible experiences with the LIFT3. For those looking for extra special highlights, we're proud to offer the LIFT3 Elite.

The LIFT3 Elite is available in the same board sizes as the LIFT3 but boasts some key differences.

LIFT3 ELITE eFOIL

WHAT'S NEW?

COMING SOON

ELITE HAND CONTROLLER

The LIFT3 Elite Hand Controller is a true symbol of our evolution. We've incorporated the technology of our existing controller and stepped it up with an incredible suite of features:

- Carbon fiber outer shell with a soft rubber grip
- Configurable hand strap to give you absolute control
- A fully adjustable milled titanium trigger
- Customizable color display screen for the most relevant information at a glance
- Integrated rechargeable battery for extended riding time
- Precision GPS to collect and display speed and distance stats



ELITE PROPULSION

We optimized the LIFT3 Elite propulsion system for even more balance, silence, and power.

It features a unique quick-lock design to allow the prop and shroud to be swapped in seconds. You can replace the shroud with an included tail cone for more control and longer ride times.

The LIFT3 Elite prop is more streamlined with less weight, giving the LIFT3 Elite more battery life. The prop can also be swapped with the Lift folding prop in seconds using the quick-release mechanism.



ELITE BAGS

Our Elite Bags are tailored cases made of rugged performance materials which we've spent extensive time sourcing. They're lightweight and compact. These cases are extra tough and easy to transport and break down to stow away.

The Elite Bags come with high-performance removable wheels so you can easily handle different terrain and high-speed cruising to the beach.



LIFT eFOIL ACCESSORIES



BATTERY

Our battery is made of custom lithium-ion and is built for rugged marine environments. It offers performance, convenience, and the most comprehensive safety components on the market.

It's enclosed in a rugged, IP68 waterproof housing so it can be safely transported and installed.



ZARGES CASE

The Zarges Case provides compliance to IMDG, IATA, FAA, and 49CFR requirements for safe storage and transportation of lithium batteries.

Zarges fire-resistant cases also carry UN HazMat Certification and protection against dust, moisture, extreme temperatures, corrosion, and cracks.

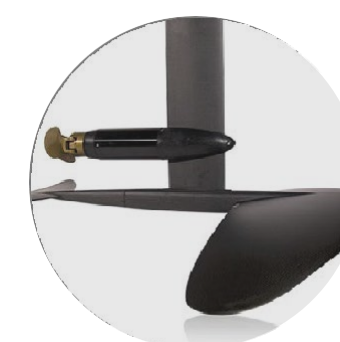
ZargesUSA.com



REMOTE CONTROLLER

Our patented waterproof (IP68) handheld design features wireless Bluetooth 5, magnetics trigger actuation, a display screen that allows you to adjust your board's settings, and a hand strap.

It runs on replaceable AA batteries for more than 50 hours of ride time.



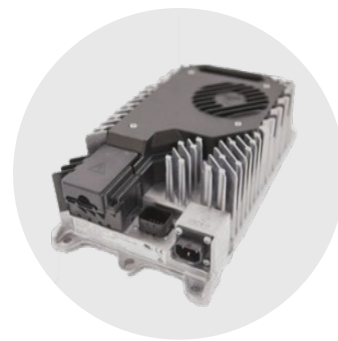
FOLDING PROP

Our innovative folding propeller allows riders to release the throttle and glide into swells.

The extremely efficient two-blade configuration rapidly folds back, reducing drag through the water when no power is applied.



If used without a prop guard, this propeller can be dangerous and is recommended for advanced riders only. Riding without a protective cover greatly increases the risk of injury and/or death.



BATTERY CHARGER

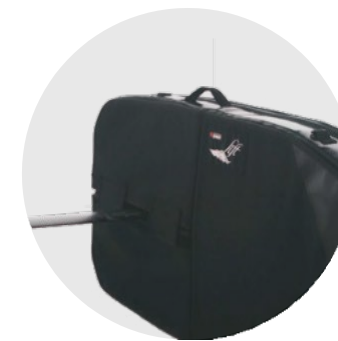
Our Delta Q battery charger is a leading unit in the industry and can deliver a safe and fast battery charge in less than two hours.

Available in USA, UK, Hong Kong, Australia, Italy, Japan, Switzerland, and South Africa configurations.



ELITE HAND CONTROLLER

The best eFoiling hand controller design ever, upgraded with a milled aluminum trigger, custom carbon construction, GPS, and customizable display.



ELITE BAG

Our lightweight, ultra-strong carrying case with removable wheels for the LIFT3 Elite.

These cases are extra tough and easy to transport and break down to stow away.



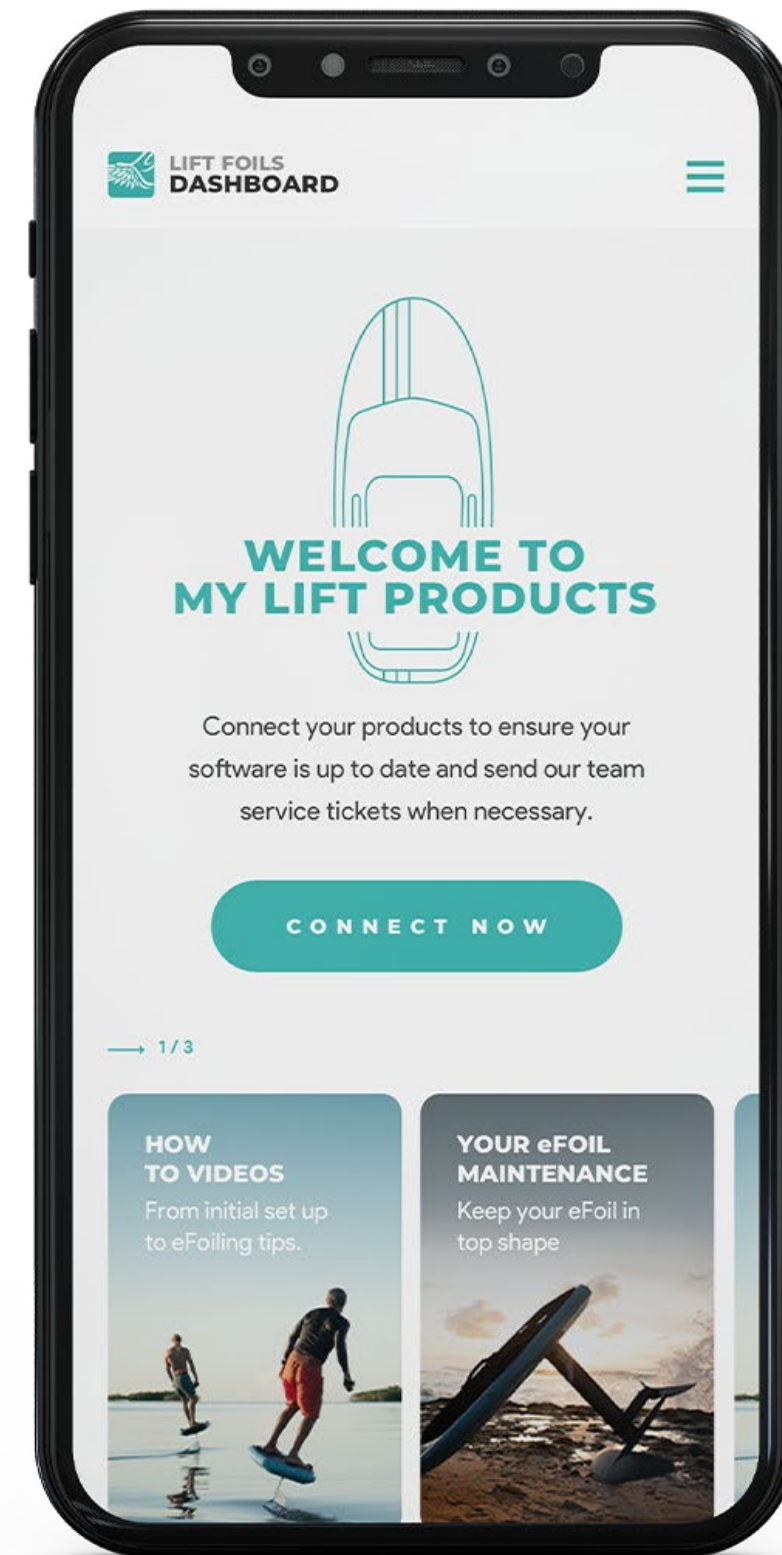
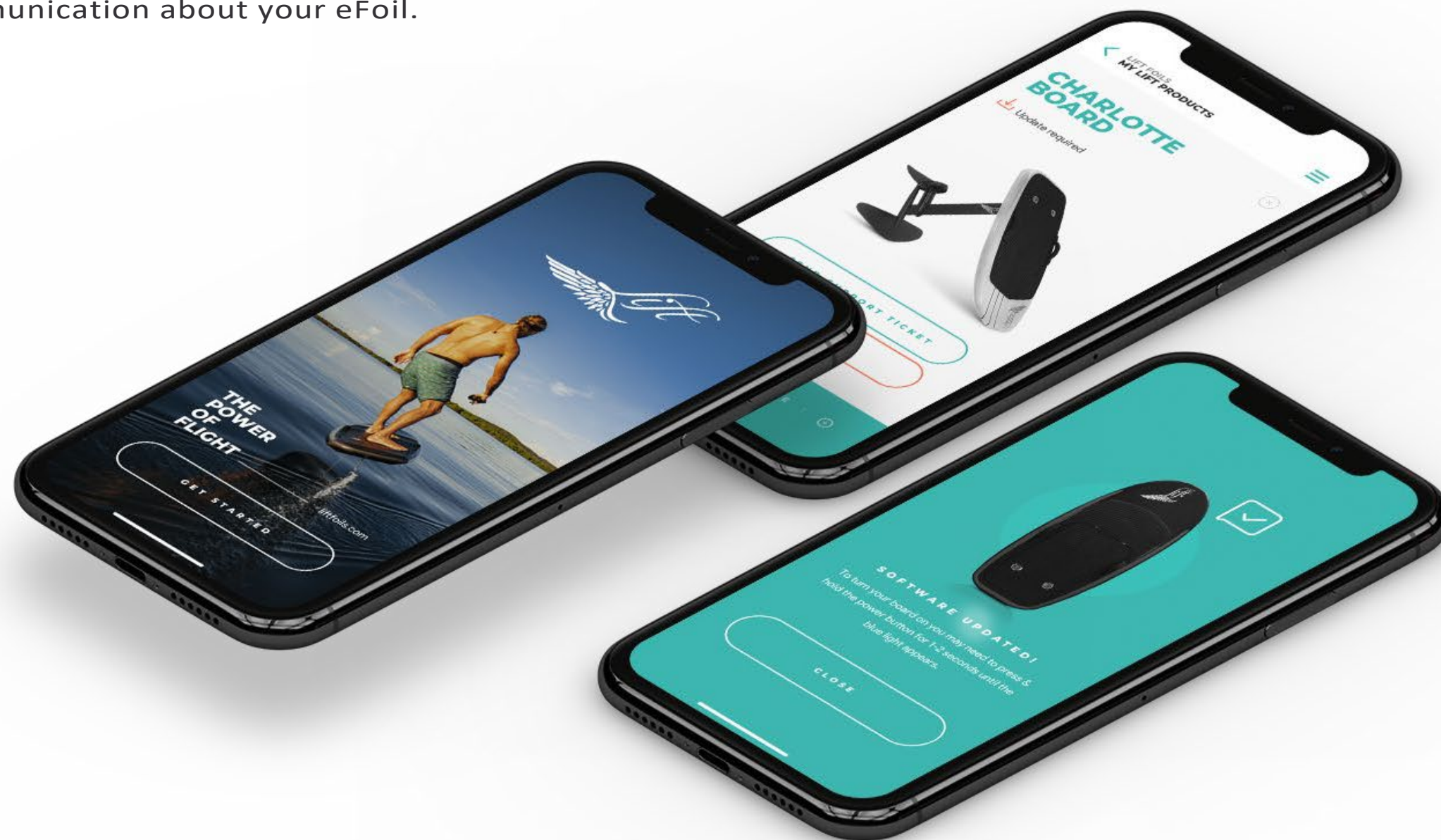
ELITE CARBON FIBER PROP AND SHROUD

A fine-tuned propulsion system with a quick-lock design for fast prop and shroud swaps.

The prop is more streamlined with less weight, giving the LIFT3 Elite more battery life.

NEW LIFT FOILS APP

Introducing our redesigned app for easy setup, updates, and communication about your eFoil.



2021
WINGS
LINEUP



2021 WINGS LINEUP

SURF V2 WINGS

This range of wings is “mid aspect,” meaning that the wingspan offers a true balance between efficiency and turning, working for multiple foil disciplines.

Whether surfing, eFoiling, or sailing, our new mid aspect lineup lowers resistance and increases your ability to carve an aggressive turn.



SURF V2 WINGS

LINEUP



60 Surf V2

The Lift 60 Surf V2 is small and aerodynamic. If you see serious riders taking on major waves at high speeds on Lift hardware, they're probably riding a 60 Surf or a close custom version.

- A specialty wing for big wave tow surfing
- Tested by the world's top riders pushing the limits on waves and in barrels
- The fastest wing in the lineup

BEST FOR: Professionals taking on serious challenges.



100 Surf V2

The 100 Surf has plenty of speed for proficient foilers.

For eFoil riders, if you want to go fast and cut aggressively, this is the wing for you.

- A fast wing for all wind disciplines
- First-rate for tow surfing waves with up to 10' faces
- Very good in smooth waters
- Recommended for pairing with the 32 Glide back wing

BEST FOR: Serious foilers of all kinds looking for speed and aggressive cuts.



150 Surf V2

The 150 Surf V2 is an all-around performance wing. Push it hard, slow it down, carve a tight turn or go for glide, this wing performs.

If you're looking for pumping efficiency, try our high aspect wings, but this wing can carve a much harder turn and will still pump back out with a little more effort.

For our eFoil riders, the 150 Surf V2 has a perfect wingspan to match this year's board lineup.

- Ideal for prone surfing
- Offers a wide variety of speeds and an impressive turning radius
- Solid for any wind discipline
- An excellent choice for sportier eFoil riding

BEST FOR: Foilers looking for an excellent all-around sporty wing.



200 Surf V2

If you want a wing you can use across all foiling disciplines and on an eFoil, this is the most well-rounded wing in the lineup.

This has been the magic size for years and with this generation's refined parameters, it's better than ever—you'll feel the smoothness in the glide.

- A choice beginner wing for prone foiling that will grow with you
- A universal wing with an emphasis on balance and stability
- A stable wing with lots of potential for fun when riding with a sail in your hands
- For eFoiling, we call it our "bread and butter"

BEST FOR: Foilers looking for a smooth riding experience rather than speed.



250 Surf V2

The 250 Surf V2 is perfect for larger foilers, or if you ride shorter surf foil boards or a shorter eFoil and want maneuverability at lower riding speeds.

The 250 is both stable and responsive.

- The big brother to the 200 Surf V2
- Great choice if you need some extra float and stability
- For eFoiling, this wing can offer a lot more stability when riding at slower speeds

BEST FOR: Larger riders and foilers riding at slower speeds.



300 Surf V2

The 300 Surf V2 offers a unique, super-stable foiling experience.

For surfing, think longboards and small waves. For sailing, learning to foil has never been so easy and fun.

If you're an eFoil owner and are teaching new riders frequently, this wing makes it as easy as possible.

- The perfect wing to get comfortable foiling—whether surf foiling, eFoiling, or sailing
- If you're teaching eFoiling with family, friends, or as a school, this is a must-have
- Don't underestimate the 300 Surf! This wing will surprise you, it's a ton of fun

BEST FOR: Larger riders and foilers riding at slower speeds.

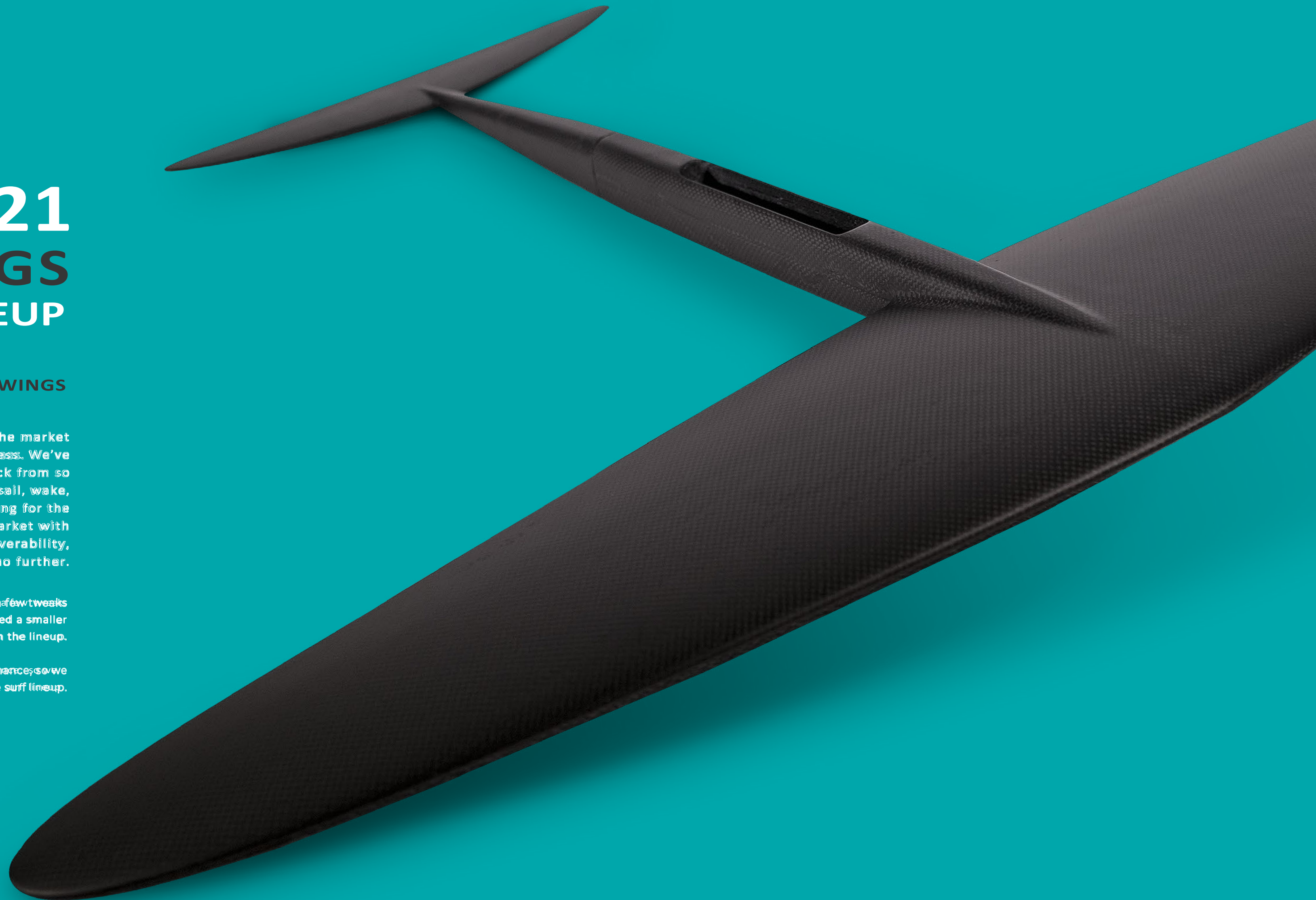
2021 WINGS LINEUP

HIGH ASPECT WINGS

Our High Aspect Wing lineup hit the market in 2020 with unprecedented success. We've never seen so much positive feedback from so many foil riders of all kinds—surf, sail, wake, eFoil, you name it. If you're looking for the best efficiency of any wing on the market with Lift's signature speed and maneuverability, look no further.

2021's High Aspect Wings have undergone a few tweaks for ultimate responsiveness, and we've added a smaller size to broaden the lineup.

These wings are ultra-tuned for performance, so we encourage entry-level riders to start with the surf lineup.



HIGH ASPECT WINGS

LINEUP



120 High Aspect

This is a specialty wing for those who like to push the limits. If you're new to foiling, set this one in your sights for later. This wing takes some getting used to, but after a few sessions, you'll start to unlock its amazing potential. If you know what you're doing and you want the hottest new toy on the market, you've found it.

- Ideal for 1' to 10' faces, this is a wing for serious foilers
- Pump out at blazing speeds and high efficiency
- Excellent turning for surfing and sailing
- Built with a specialty premium carbon fiber for ultimate rigidity at a small size



170 High Aspect

The little brother to the Lift 200 High Aspect, this one has 170 square inches of surface area with a 37" wingspan. It's a shop favorite that demands a little bit of practice but will be your absolute favorite wing for all disciplines. It's fast, it turns, and it pumps as if you had a motor below your board (something you should also look into...)

For eFoiling, this wing offers top efficiency and runs quickly. It takes some practice, but it's extremely gratifying once you're familiar.

- Fast, efficient
- An excellent all-around wing for multiple disciplines



200 High Aspect

With 200 square inches of surface area and a 37" wingspan, this wing does it all. The 200 High Aspect offers an ideal middle ground for float without too much drag, so you can keep up your speed and connect on every wave.

For the eFoil, this wing will give you serious ride time. Just try to run down a full battery on these. We dare you.

- The ultimate glide wing for surfing
- Our go-to High Aspect Wing recommendation
- If you're eFoiling and want to go the distance, run the 200 High Aspect

2021 WINGS LINEUP

TAIL WINGS

Our Lift Tail Wings (backs) are all new for 2021. They have a slightly longer fuselage, which means faster drawn-out turns and a more uniform balance with our front wings.

The larger wings offer more stability and less movement with the cost of added drag.

The smaller wings are going to be faster (due to less drag) and are more maneuverable because they're less stable.

When choosing your back wings, remember that smaller wings lock in at higher speeds and larger wings are better for lower speeds.



TAIL WINGS

LINEUP



38 Surf V2

- Our most versatile tail wing
- Pairs well with the 150 Surf and larger sizes



48 Surf V2

- Our largest and most stable wing
- Pairs well with the 200 Surf and larger sizes



25 Glide

- Our smallest and fastest wing
- A shop favorite for pure speed
- Not recommended for the eFoil, but amazing for surfing
- Pairs well with the 60S, 100S, 150S, and all HA wings



32 Glide

- Sporty and fast
- Less area and lower angle offers better glide and faster speeds
- Pairs well with the 60S, 100S, 150S, 120HA, 170HA and 200HA



34 Surf *

- A favorite from our launch lineup that has developed a cult following
- Shorter fuselage offers a unique tighter turning radius
- A specific wing for those who like its unique feel and turns
- * For surf only, not for eFoil

eFOIL & WING
SUGGESTED COMBOS



● 4'2 Pro / 150 Surf V2 / 38 Surf V2



● 4'9 Sport / 200 Surf V2 / 38 Surf V2

Grab an extra 150 Surf V2 if you want to pick up some speed.



● 5'4 Cruiser / 200 Surf V2 / 48 Surf V2



● 5'9 Cruiser / 250 Surf V2 / 48 Surf V2

2021 CLASSIC FOILS LINEUP

A DECADE
OF HYDROFOIL DESIGN

In the world of classic hydrofoils, we're industry leaders for a reason. Our team has been working for over a decade to create user-friendly foils that grow with you.

We use the highest performance materials and spare nothing in terms of design and quality so that we always deliver the absolute best.

The foil demands precision and balance to function properly, and we work constantly at fine-tuning our gear so that you get just that.



2021 BOARDS LINEUP

SURF BOARDS

This year's prone boards come in a straightforward lineup that covers every type of riding style, from the beginners to the pros.

Our boards are built for performance and longevity and have a classic look that never goes out of style. They're made of full carbon fiber with reinforced mast boxes, so they're both lightweight and sturdy.

Each board comes with a carrying case for added protection, a full deck pad, and the hardware you need to mount the foil of your choice. If you want premium quality and top-of-the-line performance no matter your skill level, our 2021 lineup is it.



SURF BOARDS

LINEUP



4'0 x 28 Liter

This is our pro board, designed to do it all. Its compact size makes the ride extremely agile and light while allowing you to pump more efficiently. Its 28-liter volume gives you enough floatation to paddle and ride an array of waves. This board also comes with strap inserts, just in case you want to get radical and catch some air time.

A personal favorite for all the riders on the Lift team.

Suggested Setups: Go for performance

- Mast: Pair this board with a 28" or 32" mast, depending on wave size.
- Wings: Try the 100, 150, or 200 Surf. All High Aspect Wings work amazingly well with this board.
- All-around fun: 28" Mast / 170 High Aspect / 32 Glide
- For the pros: 32" Mast / 120 High Aspect / 25 Glide

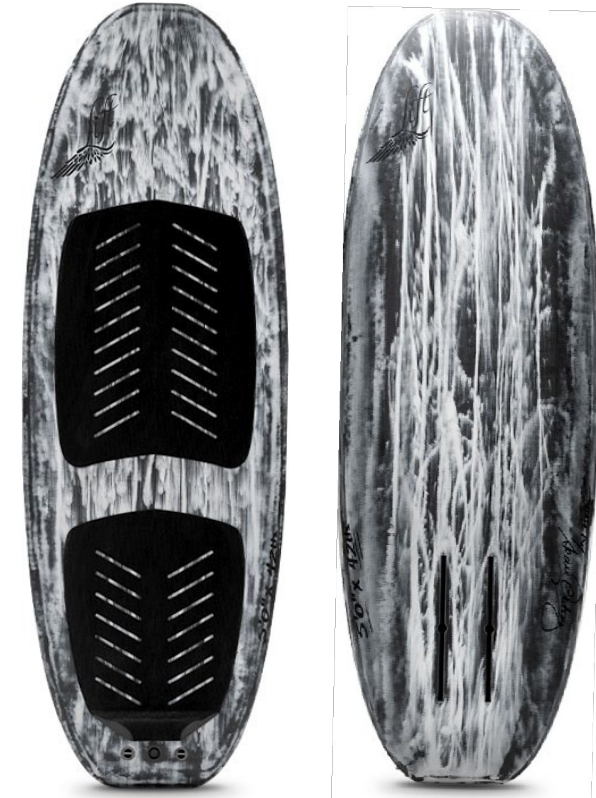


4'6 x 34 Liter

A well-rounded board that offers paddle power, support, and performance. It offers a locked-in feel with total maneuverability for all water conditions. This is our most popular size because seasoned surfers can adapt to its compactness relatively quickly. You'll be the king of the lineup on this rig.

Suggested Setups: Everything works!

- All-around fun: 28" Mast / 200 High Aspect / 38 Glide
- For the pros: 32" Mast / 170 High Aspect / 32 Glide



5'0 x 42 Liter

Let's say you're new to foiling, but you're confident in your abilities and you want a board that you won't outgrow right away. This 5-footer is going to offer true maneuverability while its 42-liter volume provides paddle power and support. You can catch waves early and focus on dominating the foil. This board will feel locked-in and sets you up for a long journey of improvement and refinement.

Easy to use and lots of fun.

Suggested Setups

- 28" Mast / 200 Surf V2 / 38 Surf V2

ALL BOARDS AVAILABLE IN:



CARBON MARBLE

BLUE

WHITE

2021 BOARDS LINEUP

WING BOARDS

Wing surfing is exploding as a new foiling category. We built a straightforward top-of-the-line board lineup that covers everything for everyone with three sizes: Lift's versions of small, medium, and large.

FUN FACT : these boards work well as crossover prone boards. If you want a shorter board with more volume, you can surf these, no problem. We use them all the time for larger riders, towing behind the eFoil, teaching, and more. There are endless ways to have fun with Lift wing boards.

Each board comes equipped with carrying cases to keep your gear pristine for years. They also come with pre-installed full deck pads, hardware to attach the Lift foil of your choice, and foot-strap inserts to rig a 2- or 3-foot strap configuration. Everything you need to rip is included.



WING BOARDS

LINEUP



4'4 x 44 Liter

The smallest pro board in the fleet. This deck was designed to be as small as possible without sacrificing the ability to water start with a small sail in average winds. Its 44-liter volume is enough to float you to the surface and get moving, while the reduced length is truly performance-driven and ultra-maneuverable when locking into the surf.

Suggested Pro Setup:

- 32" Mast / 120 High Aspect / 32 Glide



4'8 x 55 Liter

A well-rounded deck that offers everything you need. This board has the best mix of volume, stability, and agility. For most riders, this is the go-to board that suits all wing foiling needs. It's also a brilliant crossover board for surfing and catching a lot of waves.

Suggested Setup:

- 32" Mast / 200 High Aspect / 32 Glide



5'2 x 95 Liter

New to wing surfing? We've got you covered with this short, wide, and stable board. This one allows you to get on your feet, but because it's only 5' 2" you don't feel like you're riding a massive board. It feels light, allowing you to keep it under control. This board is endless fun and extremely versatile. Go out in light winds or teach the whole family how to foil.

Suggested Setup:

- 28" Mast / 250 Surf V2 / 48 Surf V2

ALL BOARDS AVAILABLE IN:



CARBON MARBLE

BLUE

WHITE

2021 MASTS LINEUP

Our 2021 masts come in four sizes. Each mast is all-carbon-fiber and they perform better than ever. The masts may not look too different from previous generations, but we've fine-tuned the construction with a new proprietary premium carbon fiber blend for improved control and response.

We've also dialed in the flex patterns of the masts. In our decades of creating foils, this process has emerged as the key to achieving the ultimate ride. We compare it to using higher quality wood in a musical instrument.

This generation of Lift masts offers a truly premium ride experience. Water isn't like aluminum feel dead when you carve a turn, and more rudimentary carbon fiber just isn't the same.



MASTS

LINEUP



24" *

- The shortest version in the lineup
- Good for learning and reduced swing weight under your feet
- * Not for pairing with the eFoil



28"

- The standard in the performance foiling market, very versatile
- More responsive in turns and easier to control
- Keeps your wings higher in the water, locking into the surface energy for surfing and pumping



32"

- Perfect for bigger and faster surf
- More room for error
- Bank tight turns without the tips of your wing breaching the surface
- Pairs well with our High Aspect Wing



36" *

- * Surf foils only

AMBASSADORS
THE LIFT FAMILY



ARIHOE TEFAAFANA

@arihoe_tefaafana
Photo: @dmosqphoto

AMBASSADORS
THE LIFT FAMILY



LAIRD HAMILTON

[@lairdhamiltonsurf](#)

Photo: [@patrickwieland](#)

RECENT PRESS

The New York Times

"[The eFoil] was brought to market by Nick Leason, an engineer and avid surfer in Puerto Rico. Technology from smartphones, electric vehicles and drones was used to create a remote-controlled board that could fly over the water without wind or waves."

—*New York Times*

FINANCIAL TIMES

"[It's] magic. I always describe [eFoiling] as flying without the consequences of crashing."

—*Laird Hamilton, Financial Times, "How to Spend It"*

goop

"Magic carpet meets surfboard."

—*Goop*

San Francisco Chronicle

"It feels both revolutionary and like a natural outgrowth of our broader shift toward personalized, battery-powered transportation... It's like riding a warm knife edge through butter. Suddenly you're floating peacefully over a beautiful lake, relaxed enough to notice the surrounding trees and mountains."

—*San Francisco Chronicle*

MAXIM

"All our dreams are becoming reality. NEED."

—*Maxim*

BUSINESS INSIDER

"It's easy to learn and ridiculously user-friendly . . . It's magical up on that hydrofoil."

—*Business Insider*



THE SUNDAY TIMES

"[T]he surfboard Back to the Future's Marty McFly might have ridden... It's magical."

—*The Sunday Times*



BARSTOOL[®] STORE

"...easily the most fun I've had all summer."

—*Barstool Sports*



CNN Travel

"This is unlike any other surfboard."

—*CNN Travel*

VANITY FAIR

"The hot new trend in the oceans around Silicon Valley..."

—*Vanity Fair*

"A tumultuous year hasn't put a stop to innovation... Fancy a surfboard that flies over the water? Then take a look at the Lift eFoil..."

—*Vanity Fair UK*



NBC Sports NETWORK

"If you haven't tried [the eFoil], you really need to...This is my new favorite thing."

—*NBC Sports*

FLY BEFORE YOU BUY

If you want to try an eFoil, we have the world's largest partner network for lessons and demos, with over 300 affiliate locations around the world.

You can check out the experience for yourself at many of the world's most idyllic places.



Search our global network of Lift Foils representatives to test our eFoils and experience flight above water.

FLY BEFORE YOU BUY >

eFOILING AROUND THE WORLD

ALASKA eFOILS



eFOIL GC - AUSTRALIA

eFOILING
AROUND THE WORLD



LIFT FOILS JAMAICA

eFOILING
AROUND THE WORLD



VI FOILS VIRGIN ISLANDS

eFOIL SWEDEN





LIFTFOILS.COM

info@liftfoils.com

Our mailing address is:

500 Bajuras

Isabela 00662

Puerto Rico

Phone:

+1.787.609.6198

@LiftFoils

