

HMS Industrial

Manufacturing of Spare and New Parts

We are:

- Vision:
Be the first option for Our Customers to solve they needs.
- Objective:
Give Quality, Cost and Delivery time according with the Customer.
- We move by:
 - Engineering
 - Pleased Customer
 - Profitableness for Customer and Us.

EQUIPMENT

- **CNC Mill (2)**
 - VMC - 640, year-2021
 - Double Column Machining Center
 - X: 650 mm, Y: 400 mm, Z: 500 mm
 - Capacity: 400 Kg.
 - Spindle 10,000 rpm
 - Position Accuracy +/- 0.005/300 JIS

- **CNC Lathe (1)**
 - TK36S CNC Lathe year-2021
 - FANUC Oi Mate Advanced CNC Control
 - 6 Station Tool Changer
 - Max. Turning length (mm) 600 mm
 - Chuck Size 7.8"
 - Rapid Speed X: 6 m/min, Z: 8 m/min.
 - Travel in X/Z: 7.9"/24"

CNC Milling Machine (1)

- XK7136 CNC Milling Machine year 2020
- M70A Mitsubishi FANUC oi mf
- X: 900 mm Y: 400 mm, Z: 500 mm
- Position Accuracy: +/- 0.04
- Repeat position accuracy +/- 0.02 mm



EQUIPMENT

- **Bench Lathes (5)**
 - Model GH1340A year-2021
 - 5 Bench Lathes
 - Spindle Speed: 70 - 2000 r.p.m.
 - Max. Turned Length 330 mm
 - Distance between centers: 1000 mm

- **Turret Milling Machine (4)**
 - X6325 Turret Milling Machine year 2021
 - 4 Milling Machines
 - Y: 400 mm X: 750 mm Z: 400 mm
 - Milling Head R/L Swivel 90°
 - Milling Head F/B Swivel 45°

Lasser Printing Machine

- **Materials:**
 - Iron
 - Aluminum
 - Bronze
 - Metals
 - Plastic



Machining Jobs



Machining Jobs



Machining Jobs



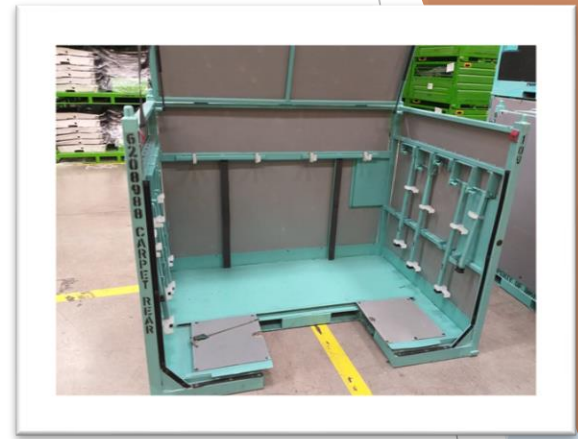
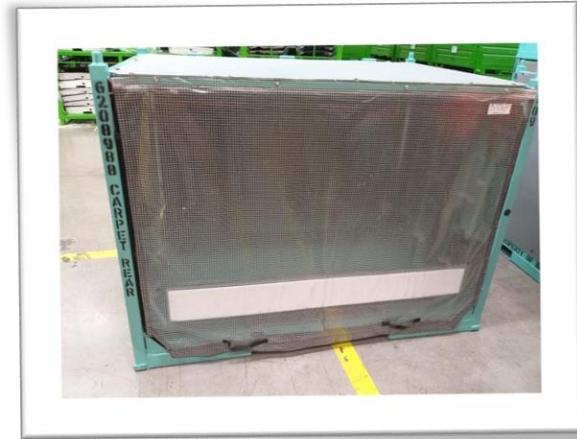
Welding

- Welding Samples
 - Trolley
 - Racks
 - Material Movement



Steel Container

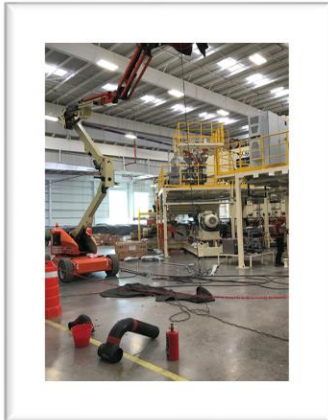
- Capacity 200 Rack per month
- Refurbishment and maintenance
- Design and manufacturing



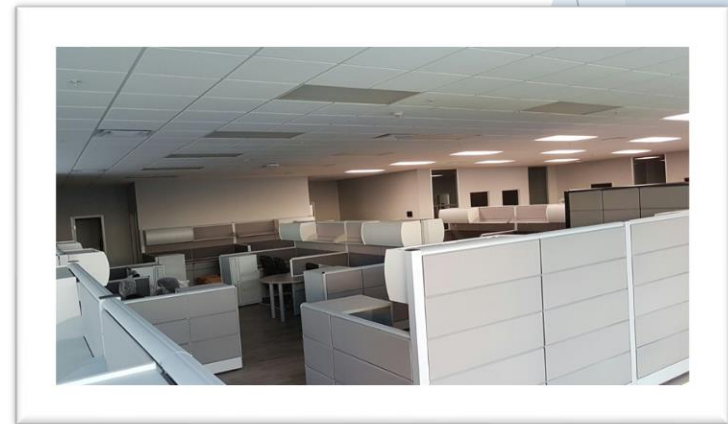
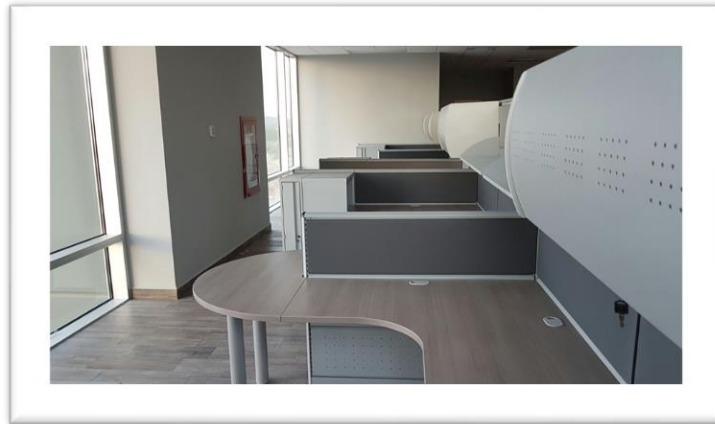
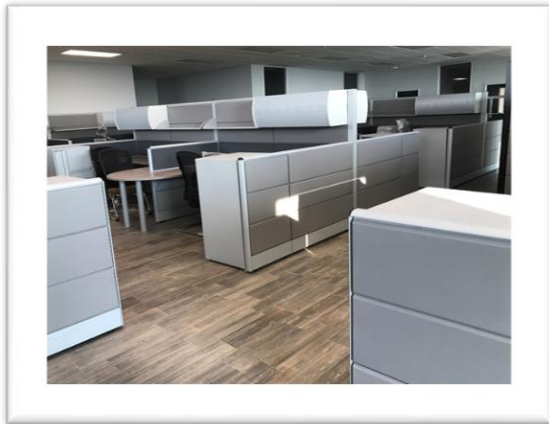
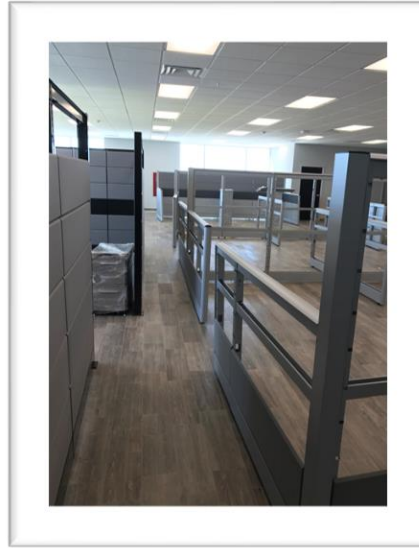
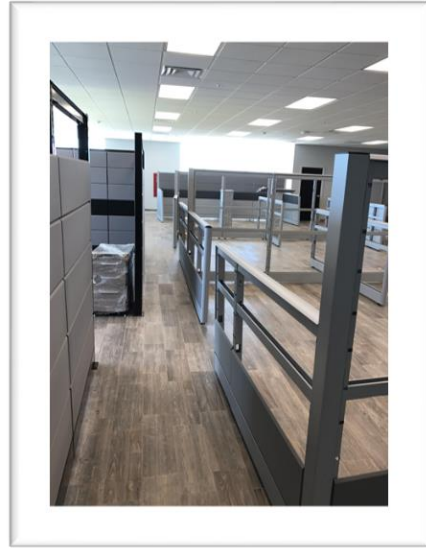
Buildings



Equipment's Installation



Office furniture



Customers



Contact Us

- Address

Street: Antonio de Roda 180,
Area: Galvez C.P. 78396,
City: San Luis Potosí, S.L.P.
Mexico

- Phone:

+52 444 822 55 64

- E- Mail

ventas@hmsind.com

- Web site

www.hmsind.com