



5



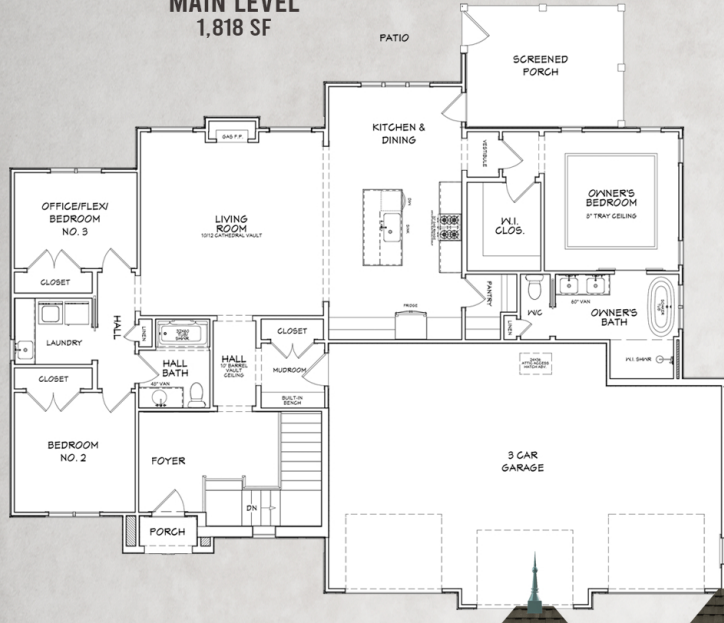
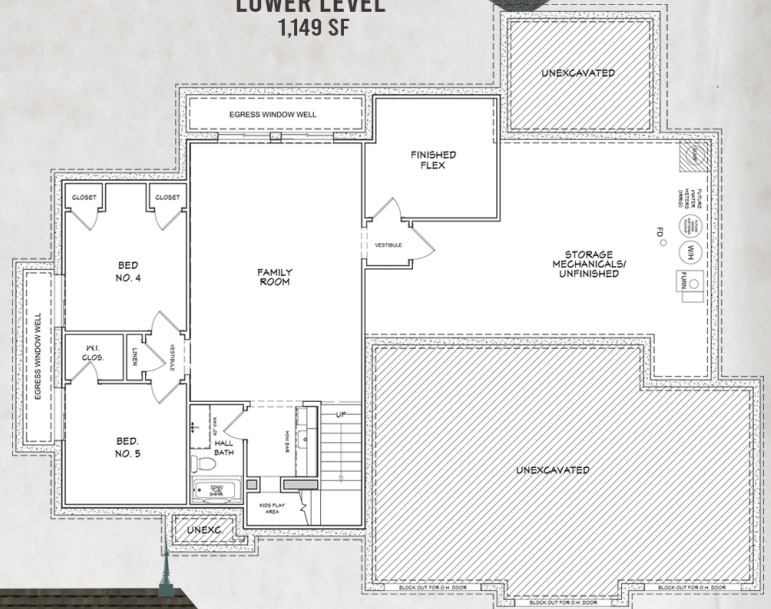
3



2,967



0.27

**MAIN LEVEL**
1,818 SF**LOWER LEVEL**
1,149 SF*2916 NW 27th Ct. Ankeny, IA***HOME FEATURES:**

- Pella Lifestyle Exterior Grille and 250 Series Casement Windows
- Upgraded Trim Package with Built-ins, Profile Trim, Panel Molding & Nickle-Gap Shiplap
- 9 Ceilings Main Level with Vaulted Living Room, Tray Ceiling in Owner's Bedroom, & Barrel Vault in Front Hall
- Salvaged European Doors in Owner's Bathroom
- Custom Iron Interior & Exterior Stair Railings and Handrails
- Interior Lit Baseboard Mouse House
- Salvaged Barn Beams & Header with Corbels
- Arched Doorways & Cased Openings
- Screened-in Porch with Additional Lower Patio
- Owner's Suite Includes Soaking Tub & Curbless Zero Entry Walk-in-Shower
- Separate Laundry Room with Sink
- Quartz & Butcherblock Countertops
- Upgraded Concrete Window Wells
- Additional Lower Level Flex Room & Kid's Play Area Under the Stairs
- Siding Package Includes: Stone with Overgrout, Wavy Beveled Edge Cedar, LP Board & Batten, Rough Sawn Wood Accents
- Walk-in Pantry with Built-in Shelving
- Full Appliance Package with Mini Bar Fridge
- Copper Roof Accents, Rainchain & Gas Lit Lantern with Mustache Bracket
- Upgraded Insulated 3-panel Carriage Garage Doors
- Sod, Irrigation & Landscaping Package with Bubbler Rock & Low Voltage Lighting

2916 NW 27th Ct. Ankeny, IA

DESIGN SELECTIONS

LIGHTING:



DINING



ISLAND
PENDANTS



OWNER'S
BATH TUB
PENDANT



PANTRY &
OFFICE/BEDROOM



OWNER'S
BATH
VANITY



KITCHEN
SCONCE



LIVING ROOM



OVEN
WALL



FRONT
HALLWAY



FRONT ENTRY



MAIN FLOOR
BEDROOMS/
SCREEN PORCH



LOWER
LEVEL
BEDROOMS



HALL
BATH



LAUNDRY



LOWER
LEVEL BAR &
BEDROOM



FIREPLACE



LOWER LEVEL
SCONCE



KIDS PLAY
AREA WALL
SCONCE



LOWER LEVEL
BATH

2916 NW 27th Ct. Ankeny, IA
INTERIOR FINISHES



2916 NW 27th Ct. Ankeny, IA

FULL HOME SPECIFICATIONS LIST



- o Oversized basement egress windows with poured concrete window wells
- o Pella Lifestyle Exterior Grille and 250 Series casement windows
- o Passive radon system
- o Sherwin Williams paint
- o Drain tile foundation drainage system to sump pump
- o 1/3 HP disposal
- o Exterior siding package including LP Smartside, and cedar bevel skirt siding
- o Eldorado Grand Banks Limestone stone veneer exterior with white overgrout
- o Rough Sawn Douglas Fir timbering at front elevation and screen porch
- o Copper gas lit lantern at front entry
- o Poured concrete covered screen porch with additional patio
- o Landscaping package included with low voltage landscape lighting
- o Custom Kleener Image bubbler rock fountain water feature
- o Lawn irrigation system with 2nd water meter
- o Upgraded Amarr 3 panel insulated garage doors with windows
- o Liftmaster 1/2 HP belt drive garage door openers
- o Rheem 96% efficient furnace 16 SEER AC and Honeywell fresh air dampening
- o Tyvek house wrap
- o 200 amp electrical service
- o Power vent water heater
- o Programmable thermostat
- o Décora light switches
- o Countryside Cabinets in Bisque and Moss featuring soft close doors and drawers with full extension dovetail drawers. Solid wood cabinet boxes, drawers and shelving
- o Upgraded trim package with custom built-in cabinetry in pantry & mudroom
- o Quartz and butcher-block countertops
- o Can/Fan combo unit in owner's shower
- o Blown-In-Blanket (BIB) insulation system - Fully insulated garage
- o Caulked sill plates, spray foamed rims and penetrations
- o Basement insulated and drywalled with blanket insulation in unfinished storage/mechanical room
- o 3/4" Advantech tongue & groove subfloors
- o Owner's bath walk-in (curb-less) shower with waterproof system
- o Dreamweaver Modern Edge carpet and Platinum Plus Fallow LVP flooring
- o Sterling fiberglass shower units
- o Custom iron stair railing
- o Eldorado Grand Banks Limestone stone veneer with white overgrout on living room fireplace with nickel-gap and built up cove trimwork mantle
- o Salvage barn beams in living room and master bathroom vestibule
- o Custom fabricated copper roof finials
- o Fully customizable Dakota closet shelving in owner's walk-in-closet
- o Wire closet shelving systems throughout
- o 30 year Owens Corning TruDefinition AR Peppercorn shingles
- o Basement floor drain
- o Bullnose drywall corners
- o Walk-in pantry and additional 36" full height pantry cabinet in kitchen with roll out drawer storage
- o Full appliance package including refrigerator, gas range (opt. electric hookup), microwave and trim kit, dishwasher, and basement bar drink fridge
- o Energy efficiency testing with blower door test
- o 1-Year builder warranty



