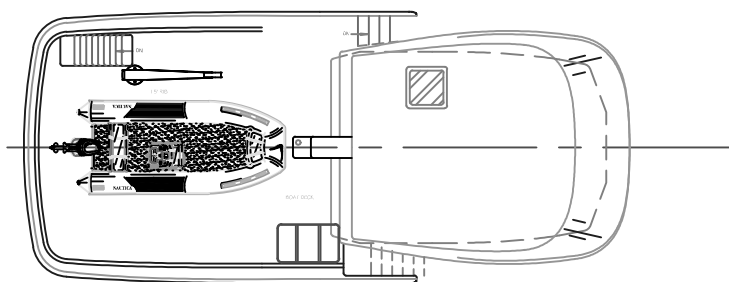
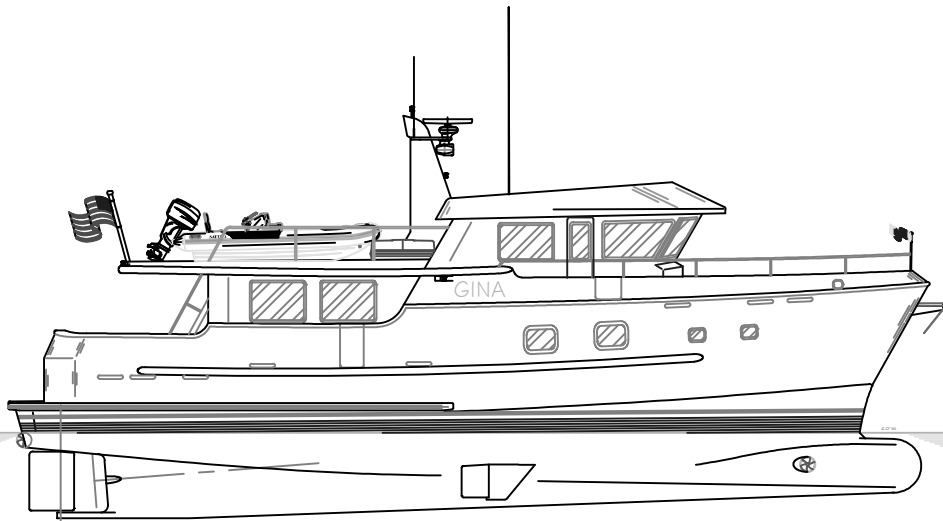


## **BRAY YACHTS Latitude 64 LRC**

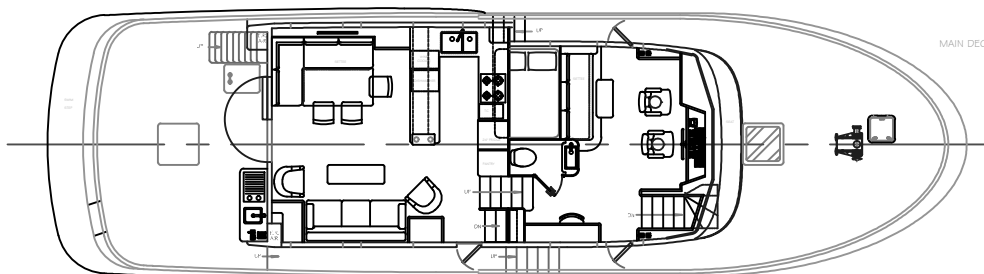


**BRAY YACHT DESIGN AND RESEARCH LTD.**

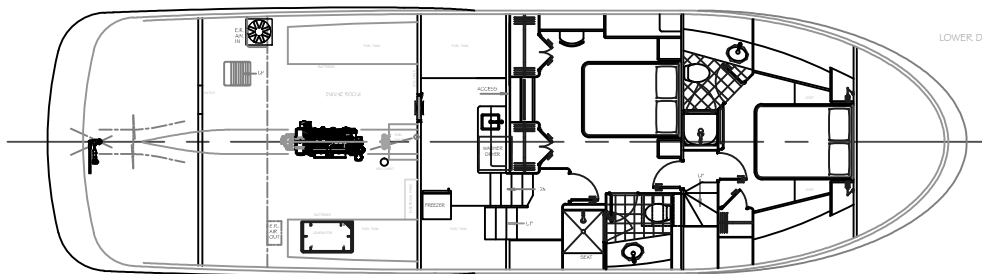
[www.brayyachtdesign.bc.ca](http://www.brayyachtdesign.bc.ca)



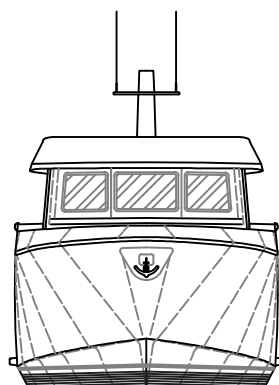
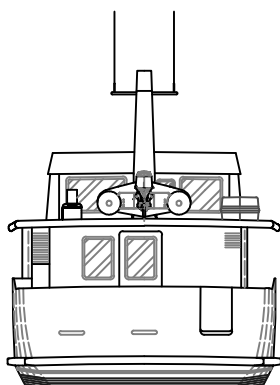
BOAT DECK.



MAIN DECK.



LOWER DECK.



# GENERAL ARRANGMENT

LATITUDE 64 LR  
"GINA"

LOA 64' - 0" BEAM 18' - 6"  
LWL 59' - 0" DRAFT 6' - 0"  
SCALE: 1/4" = 1' - 0"

**BRAY**  
YACHT DESIGN  
AND RESEARCH

WORLD COPYRIGHT  
THIS DRAWING AND ALL ITS CONTENTS REMAIN  
THE PHYSICAL AND INTELLECTUAL PROPERTY  
OF BRAY YACHT DESIGN AND RESEARCH LTD.,  
AND SHALL NOT BE COPIED, DUPLICATED,  
GIVEN OUT, OR USED, WITHOUT THEIR PRIOR  
WRITTEN CONSENT

REV. DATE: FEB. 2016

## Bray Yachts Latitude 64 LRC

Length overall	65' 9"	(20.04 m)
Waterline length	59' 0"	(17.98 m)
Beam	18' 6"	(5.64 m)
Freeboard	11' 5"	(3.48 m)
Freeboard aft	6' 10"	(2.08 m)
Draft	6' 0"	(1.83 m)
Fuel capacity	1,500 USG	(5,675 L)
Water capacity	800 USG	(3,030 L)
Grey water tank	150 USG	(570 L)
Black water tank	250 USG	(950 L)
New oil tank	20 USG	(76 L)
Used oil tank	60 USG	(230 L)
Displacement (half loaded)	100,000 Lbs.	(45,372 kg)
Main Engine	John Deere 1 x 325 hp	
Genset	Northern Lights 1 x 20 KW	
Speed Max	11 knots	
Range at 10 knots	2250 miles	
Range at 8 knots	3500 miles	

## EQUIPMENT LIST

**Interior details;** Mahogany framing combined with white painted surfaces



Dropped valance in wood  
– allows room for wire raceways and light fixtures



White walls and feature bulkheads



Light detail over table



metal framed windows



PH settee and day bed – bed is behind settee



Short overhead cabinet with glass doors on both sides

### Salon

- Entertainment cabinet and shelves
- Cherry engineered flooring
- Valance board w / lights
- Dimmable LED ceiling lights
- Wisper wall ceilings
- Space for large flat screen TV (pop up)
- Stereo / DVD / CD player
- Aluminum framed windows
- L-settee with storage drawers
- Purchased dining table top with ss legs

### Galley

- Granite counter tops
- Stainless backsplash
- Storage cabinets and drawers
- 4 burner gas cook top with electric oven
- Microwave/exhaust fan mounted over cook top
- Double sink w/single lever faucet
- Wine cooler
- AC outlets
- opening ports with screen
- Garbage disposal
- Overhead dish locker
- Rubber tile flooring
- Pantry with pull out shelves
- Stairs - (Upper) wood with carpet runner, (lower) carpet

### Helm Station

- 1 Complete engine instrumentation station (engine, clutch, bow and stern thruster controls with follow up steering and rudder angle indicators)
- Remote station with jock stick, engine, and thruster controls.
  - 1 aft deck
  - 1 port side wheel house
  - 1 starboard side wheel house
- International navigation lights
- Engine & generator hour meters
- Hydraulic steering system
- Engine alarm system, audio oil & temp.

- Dual air horn
- Intercom system 4 stations
- Helm counter tops – black matte formica

#### **Master Stateroom**

- Fresh air make up system
- Standard queen size berth
- Wood headboards
- Bureau w/chest of drawers
- Wood dresser tops
- Full length hanging locker w/auto lighting
- Portholes w/screens
- Space for large flat screen TV
- Tube light under bunk
- Dimmable LED ceiling lights
- Fresh air make up system
- Granite counter tops
- Carpet flooring
- SS undermount sink
- Faucets for sink & shower plus accent accessories
- Mirror
- Quiet flush fresh water heads – Raritan
- 24V vent fan
- Master shower – frp pan with corian walls
- Hot water bus heater
- W.C. – tile floor

#### **Guest Stateroom**

- Standard queen size berth
- Vinyl wall coverings
- Wood dresser tops
- Carpet flooring
- Hanging locker w/automatic lighting
- Space for flat screen TV
- LED ceiling lights
- Drawers under bunk
- Portholes w/screens
- Fresh air make up system
- Stock FRP shower
- W.C. – tile floor

#### **Pilothouse**

- Cherry engineered flooring
- Steering control station w/complete instrumentation
- Large helm station for electric instruments
- SS wheel
- Valance board
- Vessel monitoring system
- Helm seat x 2
- LED ceiling lights
- Chart drawer
- Hinged Dutch Pilothouse doors

### **Boat Deck**

- Radar arch with equipment platforms
- Stainless steel high polish safety rail 1-1/2"
- Self-draining non-skid deck
- Ventilation hatch fwd
- Deck Crane Steel Head ES 2000 24 volt, 4 function

### **Hull, Superstructure, and Deck**

- ABS Rules for unrestricted offshore use have been used as a guide
- Hard chine all aluminium hull and house
- 3 watertight bulkheads
- Swimming ladder
- Built-in swim platform
- Bottom protected w/4 coats epoxy barrier treatment & 2 coats of bottom paint
- Medium tinted window glass
- Deck lights
- Ventilation hatch fwd
- Watertight hatch to chain locker
- Watertight hatch to lazarette

### **Engine Room & Bilge**

- John Deere 325 hp, 1800 RPM max, M-2 rating, keel cooled, dry stack exhaust
- Electronic controls
- 4 to 1 gear box with live PTO for hydraulic pump
- Hydraulic bow thruster
- Hydraulic stern thruster
- Northern Lights 20 kw generator, keel cooled, dry stack exhaust
- Hydraulic come home system shaft mounted (Key Power)
- Pressure fresh water hot/cold system
- 30 gallon water heater w/heat exchanger
- 3 integral fuel tanks w/sight gauges
- Barr plastic water tank w/sight gauges
- Holding tank with dockside & overboard discharge
- Common drainage system for sink, deck, shower & bilge
- Color coded piping
- Color coded electrical wiring
- Three Electric bilge pumps 24V auto & manual switch 2500 GPH
- One manual bilge pump
- High water alarm
- Oil change system for main engine, gear, and generator plumbed to new and used oil tanks
- Automatic fire extinguisher system w/auto shut down
- Sea cocks on all intakes
- Seachest for all incoming salt water
- Engine room lead/foam sound insulation
- Dual Racor fuel/water separators for engines
- One Racor fuel/water for generator
- Fuel transfer pump through manifold system to any tank
- Engine room vent blower 1 x 24V
- Engine isolation switch
- Engine room floors non-slip rubber
- LED lights
- 110AC & 12V outlets engine room
- Fresh water outlet w/hose in engine room

- Engine room painted white
- Boiler Olympia 4 zones
- Watertight door
- Bray Fixed/active roll stabilizer system (Key Power)

### **Electrical System**

- Heavy duty batteries
- One (1) 8D - Engine start
- Four (4) 8D - Service (& Inverter) 1000 + amp hour AGM
- One (1) 4D - Generator
- One (1) 4D - 12V system
- Battery disconnect switches
- Battery paralleling system w/control switch
- Two 40amp battery charger - One 12V & One 24V
- Shore power receptacle 50amp - stern
- Telephone & TV shore inlets
- Battery switch
- Polarity reverse indication light
- lights in all compartments
- AC/DC Distribution panel w/circuit breakers
- Volt & Amp meter digital
- Bonding system
- Wiring for speakers throughout
- 12 volt outlet P/H, F/B
- 110 volt outlet throughout boat & bridge
- 4000W Inverter w/Remote panel
- Remote start for generator
- Maretron Vessel Monitoring System

### **Cockpit**

- Stair way to Flybridge
- Escape hatch
- Lighting on steps
- Overhead lighting
- Dutch door w/lock from cockpit to salon
- Counter, sink, and gas BBQ

### **Laundry**

- Stacked washer & dryer in Laundry
- Freezer, min 7 cu. Ft.
- Counter with sink

### **Accommodations & Interior**

- SS Hardware
- Mahogany framing combined with white painted surfaces
- Marineair 4 zone air conditioning system with reverse cycle heat

### **Exterior Hardware and Fittings**

- SS Bow & stern staff
- Hydraulic anchor windlass w/foot & bridge control
- Windlass Maxwell VWC 3500 with 400' of 1/2" HT chain
- 120 lb SS CQR Anchor

- Anchor wash down system
- Hardware SS #316
- 1-1/2" SS Handrail & stanchions
- SS Cleats & hawse holes
- SS Portholes
- Fresh & sea water wash down forward deck
- SS Rudder stock
- 3" Marine grade propeller shaft
- 45" Five blade highly skewed propeller
- Line cutter on shaft
- Packing Gland, bronze 2 bolt type
- Seachest for all through hull fittings
- Zinc on rudders & shafts
- Rubber D (Taco Metal) for rub rail

Parent form at 10 knots

