



**RELATIVITY 7**

# **ASYLUM SEEKER HOUSING INITIATIVE**

487 East Main St Suite 335 Mount Kisco, NY 10549  
(718) 626-1524 [stuart@relativity7.com](mailto:stuart@relativity7.com)

# Our mission statement

**Our mission is to provide immediate, cost-effective, quality-driven solutions to help to assist the asylum seekers by designing, building, staffing and operating high-capacity, short- and medium-term housing and support facilities.**



**RELATIVITY 7**

# What can we do?

**Relativity 7 can provide turn-key solutions to design, build, staff, and operate up to a 20,000-capacity facility and have it up, running and ready for rolling occupancy faster than any other industry.**



**RELATIVITY 7**

# Why Relativity 7?

**No one company or organization has ever had the required skill sets and the capacity to do all aspects needed to provide the turn-key solutions offered here. Until now. We have created a consortium of experienced companies, all working together under the newly created Relativity 7 banner.**

- **We can do it faster- rolling occupancy beginning in a matter of weeks**
- **We can do it bigger- up to 20,000 people served**
- **We can do it better- Engineered and code-compliant structures with real flooring**
- **We can do it it with more flexibility- expanding and contracting as the situation requires**
- **We can offer more options- addressing many additional goals and concerns**
- **We can do it priced fairly- simultaneously and seamlessly transitioning from the necessity of getting up and running quickly to more cost-effective, ongoing and longer-term solutions**



**RELATIVITY 7**

# What can we provide in our basic package?

- **Housing**
- **Beds, bedding and hygiene kits**
- **Processing facility**
- **Showers**
- **Bathrooms**
- **Dining facilities**
- **Morale, welfare, and recreation facilities**
- **Internet and phone services**
- **Medical facilities**
- **Laundry facilities**
- **Water and Waste**
- **Generators and fueling**
- **Staffing and operational facilities**
- **Administrative facilities**
- **Temporary office space**
- **Site security facilities**
- **Police Department facilities**
- **Fire Department facilities**
- **Fencing**



**RELATIVITY 7**

# What are some of the optional goods, services and staffing that can be provided?

- **Food service**
- **Interior dividers (hard and soft)**
- **Individual units for families**
- **Educational opportunities**
- **Classrooms**
- **Day care centers**
- **Nurseries**
- **Facilities for children and teens**
- **Recreational opportunities**
- **On-site kitchens**
- **Libraries**
- **Professional services**
- **Security**
- **Medical Services**
- **Social services**
- **Immigration court facilities**
- **Transportation services**
- **On-site storage**
- **Parking**



**RELATIVITY 7**

# How fast can we do it?

**We are fully prepared to mobilize immediately.**

- **Once an agreement is signed and the materials are brought to the site, we can begin rolling occupancy with astonishing speed.**
- **Depending on site conditions, we can usually bring an additional 2,000 units online every 7 days thereafter (or faster) after initial occupancy.**



**RELATIVITY 7**

# How many units can we build?

- **Based on our current inventory, we can provide everything required to immediately house up to 20,000 asylum seekers.**
- **Depending on site, we have the capability to expand and contract capacities to satisfy any client's needs.**
- **We are currently expanding our inventory and creating new and additional partnerships and strategic alliances and are hoping to increase the total number available to over 50,000 by second quarter 2024.**



**RELATIVITY 7**



# What does it cost?

- **Particularly as it pertains to options and the selected site, there are so many variables, and until these items are decided, it is impossible to set a per person per day cost. We can quickly custom build a budget that reflects the specific requirements of any job.**
- **Our costs are competitive with , if not lower, than most alternatives.**
- **By doing larger groupings of people, there are many economies of scale savings.**
- **Through our value engineering processes, we can transition from ultra temporary services (e.g. generators) to more permanent services (e.g. municipal power), concurrent with occupancy, if it is cost effective to do so.**
- **We can also transition for temporary to permanent structures on the same site while maintaining occupancy.**



**RELATIVITY 7**

# Who We Are

- **Relativity 7 is a consortium of companies and people organized and led by Stuart Weissman.**
- **Our executive team provides all administrative and financial functions.**
- **Our primary development team will actively collaborate with various local stakeholders, including politicians, community boards, unions, educators, performance monitors, and outside consultants to ensure transparency**
- **Our primary install and maintenance teams are composed of disaster response specialists, architects, engineers, construction companies, special event companies, and operational specialists and subcontractors and local labor (where possible).**
- **Our operations team will procure and help implement and manage all additional and optional goods, services and staff.**



**RELATIVITY 7**

# What are our core corporate beliefs?

- **Relativity 7 and all our partners, contractors and subcontractors have a deep commitment to all aspects of diversity, equity and inclusion.**
- **Wherever and whenever possible, we will always look to expand opportunities to create a fairer and more equitable work environment.**
- **We have a Zero-Tolerance policy against sexual harassment.**
- **We demand that all interactions between everyone at Relativity 7 and all the entities under its umbrella to be conducted in a professional and respectful manner, whether to the client, the community, and most importantly, to our guests.**



**RELATIVITY 7**

# Senior Management

- **Stuart Weissman, and his existing company SWP, are a NY based full-service production and general contracting company with over 40 years of experience building and producing almost every kind of temporary structure and event imaginable.**
- **With a background in both construction and production, he has successfully produced several hundreds of events in NY, around the country and around the world.**
- **As primarily a production-based company, he routinely builds some of the most technically complicated temporary environments and events in some of the most difficult places to work, with many built in a very short time frame.**
- **For over 20 years, he has consulted for and with the NYC Mayor's Office and various city agencies (including the Department of Buildings) to help facilitate and ensure that not just his events, but all events in NYC and elsewhere, meet or exceed current professional standards, particularly in cases where the existing rules and regulations are insufficient.**
- **He was instrumental in helping create the NYC Mayor's Office of Citywide Event Coordination and Management and helped them to write and edit the rules for temporary spaces and all events in NYC.**

SWP  
• NYC •



**RELATIVITY 7**

# Who are Relativity 7's partner companies?



We have assembled a unique team that is quite simply, the best in the business, all with voluminous on-point experience in every aspect of the project.

- Keystone Global
- Vision Building Systems
- EventSolutions
- Ranco Response
- ServiceMaster by EMT
- Consultant Zee
- G5 Event Productions



**RELATIVITY 7**

# What's our goal?

**Our ultimate goal is simple.**

- **To listen and understand the needs of our clients.**
- **To help set achievable and attainable goals.**
- **To design a plan of action.**
- **To develop and share the metrics to assess our work.**
- **To successfully implement and execute that plan.**

**We aspire for all aspects of what we do to not only meet, but to surpass and exceed the standards expected by both the procuring agency and the asylum seekers.**



**RELATIVITY 7**

# Our structures

- **Our structures are a hybrid of traditional buildings and tents.**
- **They come in various lengths, widths and heights.**
- **They are fully customizable to fit in virtually any location.**
- **Because of our sidewalls, our structures can have more usable space when compared to a traditional tent.**
- **Our structures have a long history of successful usage throughout the country and around the world.**



**RELATIVITY 7**

# Our structures

All our structures are:

- Code compliant with windows and doors.
- Contain true raised deck wooden floors.
- Are equipped with full heating, ventilation, and air conditioning (HVAC).
- Are outfitted with all required safety equipment.
- The exterior sizes are fully configurable and customizable to fit in virtually any location.

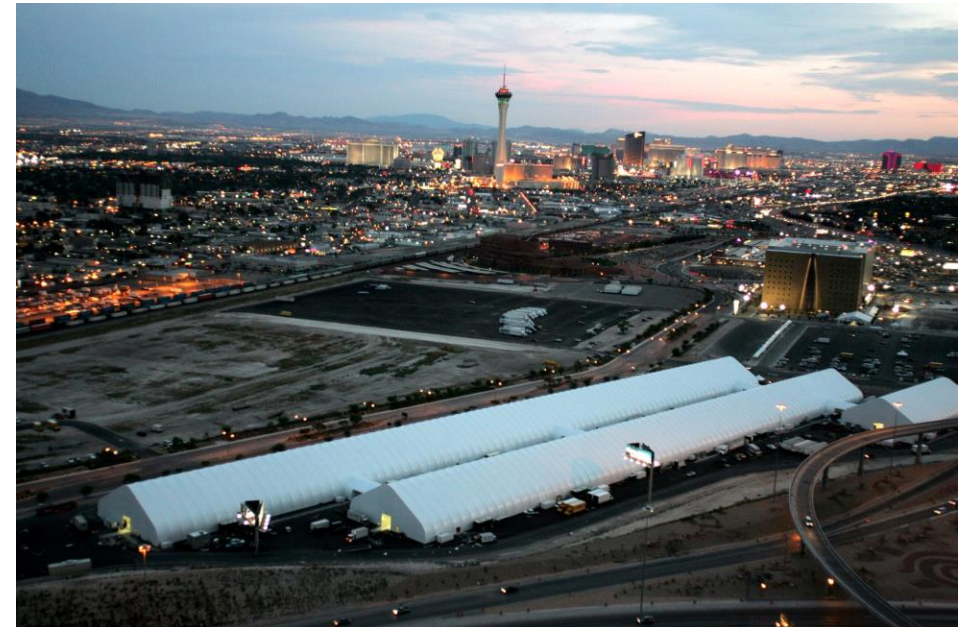


RELATIVITY 7



# Modularity

- **Our structures can be used singly or built in combination to increase capacity and to separate individual functions.**
- **They include all necessary support, either internally or externally including all HVAC systems, bathroom and shower facilities, kitchens, laundries, loading docks, storage spaces and staff areas.**
- **Designed to be completely off-grid, we can supply everything including power, water and sewer. But if conditions dictate, they can be built on-grid, utilizing local utilities or a combination of both.**
- **They have significantly more usable space than traditional tents, potentially allowing us to put in multiple floors.**



**RELATIVITY 7**

# Flexibility

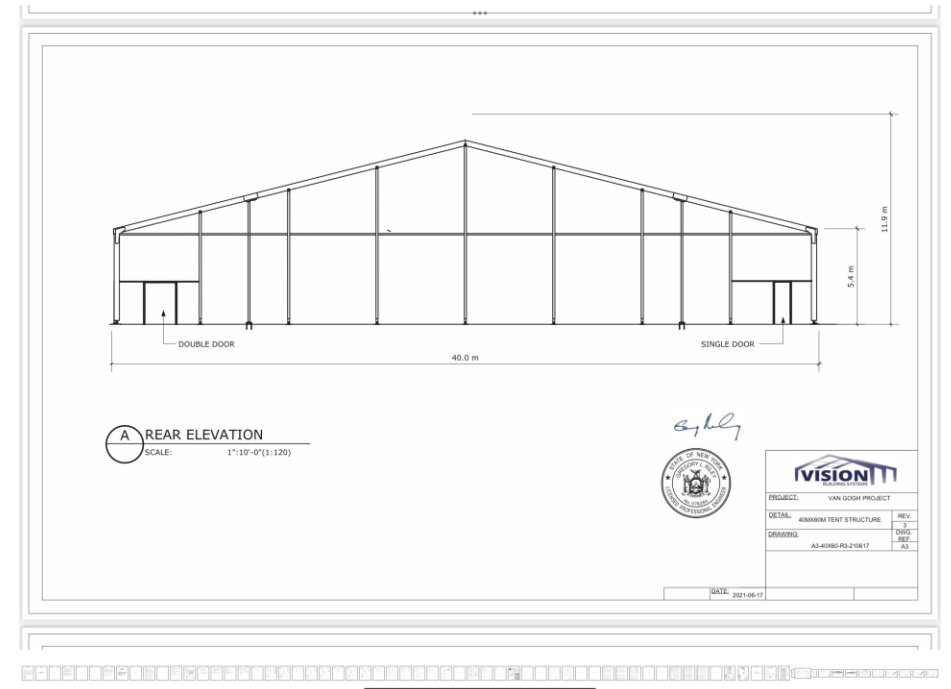
- **If required, interior dividers can be used in all our structures in virtually any configuration. The structures can be undivided or have walls ranging from soft walls (pipe and drape), walls created from stretched fabric over frames, all the way up to modular hard walls that are fully enclosed, pre-wired and interlocking, creating private spaces with lockable doors. Additionally, these fully enclosed units can be further divided into a series of rooms.**
- **They can be purpose built to address some of the most challenging uses, including medical facilities, quarantine facilities, morgues, other various support areas and individual family units, and if required, these can have either hard-walled or soft-walled dividers.**



**RELATIVITY 7**

# Compliance

- Every structure we build is fully code complaint.
- Regardless of the intent, these structures can be used either for short-term or long-term use.
- These structures are purpose designed and architecturally reviewed for function and compliance.
- These structures are fully engineered for structural integrity and are both wind-load rated, and snow-load rated.



RELATIVITY 7

# Infrastructure

- **The entire facility comes complete with generator power and electrical distribution.**
- **Has code compliant lighting inside the structures and throughout the facility.**
- **Has complete external water services including delivery, storage, distribution of all potable water, and grey and black water holding and removal.**
- **Complete refuse removal will be provided.**
- **Transportation pick-up and drop-off areas and parking areas for staff and support will be provided.**



**RELATIVITY 7**

# Infrastructure

**The facility has its own stand-alone services and requires no power, water and sewer beyond what we supply. We can transition to municipal utilities over time, when cost effective, and without interruption to any services. Future services can include:**

- **Install and tie-in to the electrical grid to be supervised by a licensed master electrician.**
- **Install and tie-in to local water system for supply supervised by a licensed master plumber.**
- **Install and tie-in to the local sewer system supervised by a licensed master plumber.**

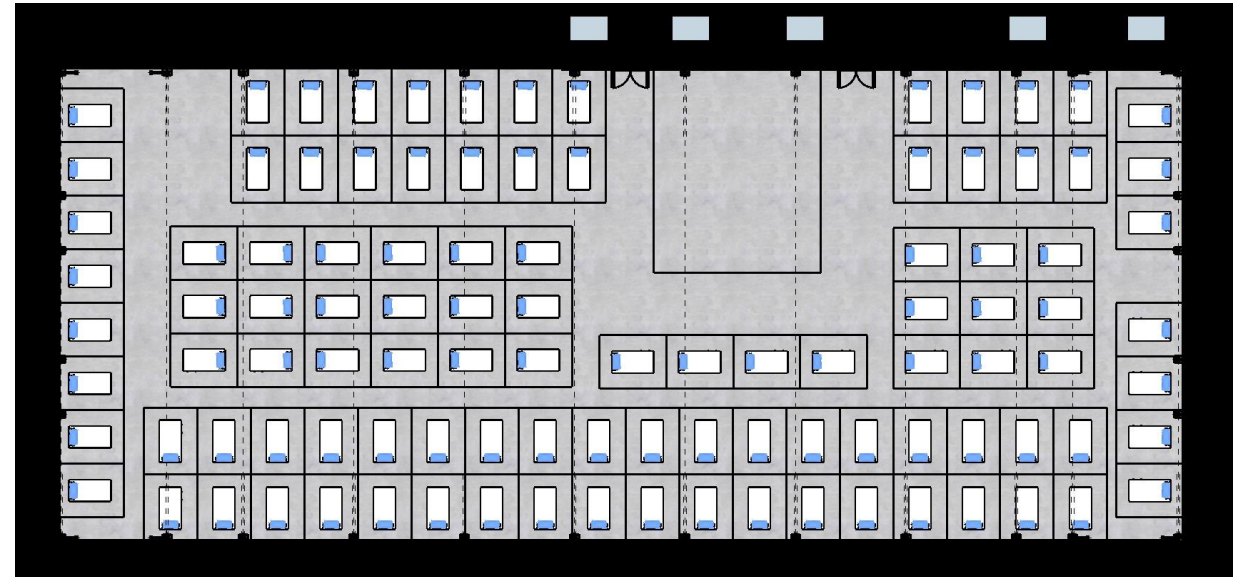


**RELATIVITY 7**

# Billeting/Accommodations

**Single sex dormitory sleeping arrangements with:**

- Cots
- Full linen packages with sheets, blankets, pillows and towels
- Storage trunks
- Basic hygiene packages
- Charging lockers for electronics
- Daily cleaning of common areas



**RELATIVITY 7**

# Billeting/Accommodations

## HYGIENE/TOILETRY KIT

Item Description	QUANTIT Y	UOM
DRAWSTRING BAG	1	EA
5" COMB	1	EA
TOOTHBRUSH	1	EA
HAIR BRUSH	1	EA
ADULT SHOWER SHOE	1	EA
WASH CLOTH	1	EA
HAND TOWELS	1	EA
BATH TOWEL	1	EA
BAR SOAP 1.5 OZ	1	EA
SHAMPOO 2OZ	1	EA
CONDITIONER 2OZ	1	EA
ETHNIC SHAMPOO	1	EA
ETHNIC CONDITIONER	1	EA
TOOTHPASTE	1	EA
DOUBLE BLADED RAZOR	1	EA
SHAVE GEL PACKET .25OZ	2	EA
CONTACT SOLUTION	1	EA
CONTACT LENS CASE	1	EA
FACIAL TISSUE	1	EA
DEODERANT STICK	1	EA
SANITARY NAPKIN 12 PACK	1	EA
BUG REPELLANT WIPE	2	EA
SUNSCREEN TOWELETTE	2	EA



**Military Style Cot**

Heavy-Duty Aluminum Military Cot, all the while lightweight and sturdy.

- Durable military style cot holds 350 lbs. yet is lightweight, thanks to heavy-duty aluminum frame.
  - Water resistant coated nylon cover.
  - Measures 75" L x 25.5" W x 16" H
- Zippered storage pouch for personal items included.
  - Nylon carry/storage bag included.
  - Weight Capacity: 350 lbs

## STORAGE TRUNKS

Mobile Storage Trunk: 38.2 gal, 37 in x 17 1/2 in x 14 in, Black, Plastic, Steel



**RELATIVITY 7**

# A sample basic layout



- 1. 28 ft. LAUNDRY TRAILER X3
- 2. 32 ft. TOILET ROOM TRAILER X3
- 3. 32 ft. SHOWER TRAILER X3
- 4. 66' X 279' BUNK TENT X2
- 5. 15 ft. WIDE SERVICE DRIVES
- 6. 50' X 50' MMR TENT X1
- 7. 40' X 40' TRAINING TENT X1
- 8. 66' X 115' DINING TENT X1
- 9. 50' X 100' PROCESSING TENT X1
- 10. 53ft. KITCHEN TRAILER X1
- 11. 53ft. REFRIGERATION TRAILER X1
- 12. 40' X 40' MEDICAL TENT X1
- 13. 30' X 30' EMPLOYEE BREAK TENT X1
- 14. SECURE SERVICE GATE
- 15. SERVICE YARD
- 16. RV/CAMPER SITE X3
- 17. DUMPSTER ENCLOSURE
- 18. 200-250 VEHICLE PARKING
- 19. SECURE ENTRY GATE
- 20. SECURITY PERIMETER FENCE
- 21. PERIMETER SITE LIGHTING
- 22. FUEL FARM



# Reception and Processing

**A stand-alone entry reception structure with:**

- **Lobby seating**
- **Desks and tables**
- **Full staffing**
- **Computers and phone system**
- **Wireless internet**



**RELATIVITY 7**

# Administrative facilities

**Multiple stand-alone tents and trailer units for:**

- **Administration**
- **Computers and phone system**
- **Staff areas**
- **Storage**
- **Support**

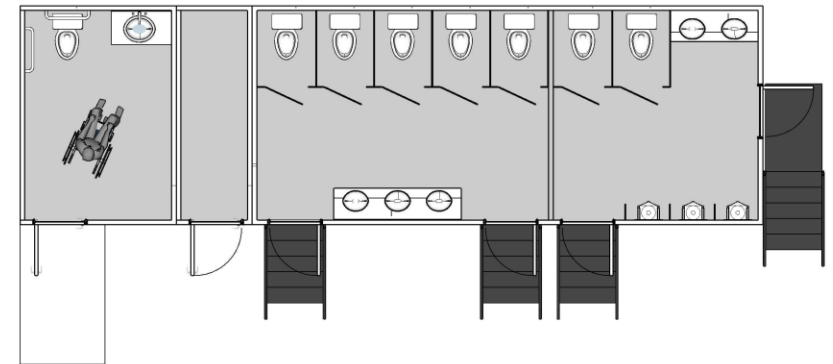


**RELATIVITY 7**

# Bathrooms

**Multiple stand-alone trailer units each with:**

- **8, 12 and 16 Stall bathroom trailers**
- **ADA compliant units**
- **Daily cleaning**



**RELATIVITY 7**

# Showers

Multiple stand-alone trailer units each with:

- 8, 12 and 16 Stall showers
- Daily cleaning



RELATIVITY 7

# MWR Facilities (Morale, Welfare and Recreation)

**Multiple dedicated facilities with:**

- **Living room furniture**
- **Additional tables and chairs**
- **Computer areas (e.g. 1 computer per 100 guests)**
- **Television areas (e.g. 1 TV per 100 guests)**



**RELATIVITY 7**

# Internet and phone services

- **Full wireless internet service throughout the facility**
- **Phone system for administration**
- **Separate area with hardline phones with only outgoing calls for guests (e.g. 1 phone per 100 guests)**
- **Charging lockers for cellphones and other personal electronics for guests**



**RELATIVITY 7**

# Laundry facilities and services

**Multiple stand-alone trailer units with:**

- **(6) washers and (6) dryers per trailer**
- **All linens to be cleaned once per week**
- **All necessary staffing for institutional and personal services.**



**RELATIVITY 7**

# Rules, security and general welfare

**We will look to adopt all local existing protocols, rules, and regulations where possible, and we can create additional protocols, rules, and regulations for approval, if required, as we have done before.**

## **Security:**

- **Ex- local law enforcement Head of Security to interface with local police and other emergency services.**
- **Exact number of security guards TBD based on adopted rules**
- **Video systems.**
- **Perimeter fencing where required.**



**RELATIVITY 7**



# Medical facilities and services

## Medical facilities:

- **Stand-alone tent or integrated into overall facility with dedicated area**
- **(2) certified EMT's per 1,000 guests**
- **Tables and chairs**
- **Lockable storage**



(Shown with optional equipment)



**RELATIVITY 7**

# Optional medical facilities and services

- **Medical options include:**
  - **24/7 on site ambulance**
  - **Additional EMTs**
  - **Covid testing**
  - **Quarantine facilities with separate HVAC**
  - **Additional medical staffing options include:**
    - **Doctors**
    - **Physician's assistants**
    - **Nurses and nurse practitioners**
    - **Support medical personnel**
    - **Social workers**



**RELATIVITY 7**

# Optional services- Staffing and labor

**After and beyond the construction and if required, we can provide 100% of all staff and labor.**

- **Ongoing staffing:**
  - **Can be integrated into existing state and municipal job assistance programs.**
  - **Where legal, we can provide jobs with job training for guests.**
- **All workers will be paid prevailing wages.**



**RELATIVITY 7**

# Catering options: Full food service and dining options

## **Full-service catering:**

- **Serving 3 hot meals with a snack per person per day.**
- **Full hot and cold beverage service.**
- **All food service staff.**
- **Dedicated dining areas with tables and chairs.**



**RELATIVITY 7**

# Catering options: Mobile kitchens

## Mobile kitchens

- Full service, trailer mounted mobile kitchens.



RELATIVITY 7

# Catering options: Food service sample menu

Monday	Tuesday	Wednesday	Thursday	Friday	Saturday	Sunday
<b>Breakfast</b>	<b>Breakfast</b>	<b>Breakfast</b>	<b>Breakfast</b>	<b>Breakfast</b>	<b>Breakfast</b>	<b>Breakfast</b>
Egg & Bacon Burrito	Western Omelette	Egg & Bean Burrito	Cheese Omelette	Egg & Potato Burrito	Egg & Potato Burrito	Cheese Omelette
Scrambled Eggs	Scrambled Eggs	Scrambled Eggs	Scrambled Eggs	Scrambled Eggs	Scrambled Eggs	Scrambled Eggs
Seasoned Rice	Gallo Pinto	Patatas Sazonadas	Gallo Pinto	Seasoned Rice	Patatas Sazonadas	Seasoned Rice
Butter Pancakes	Cinnamon Pancakes	Butter Pancakes	Cinnamon Pancakes	Butter Pancakes	Cinnamon Pancakes	Butter Pancakes
Bolillo Bread	Texas Toast	Bolillo Bread	Texas Toast	Bolillo Bread	Texas Toast	Bolillo Bread
Salsa	Salsa	Salsa	Salsa	Salsa	Salsa	Salsa
Salsa Verde	Salsa Verde	Salsa Verde	Salsa Verde	Salsa Verde	Salsa Verde	Salsa Verde
Fresh Fruit	Fresh Fruit	Fresh Fruit	Fresh Fruit	Fresh Fruit	Fresh Fruit	Fresh Fruit
Milk, Chocolate Milk, Apple Juice, Orange Juice, Coffee and Water	Milk, Chocolate Milk, Apple Juice, Orange Juice, Coffee and Water	Milk, Chocolate Milk, Apple Juice, Orange Juice, Coffee and Water	Milk, Chocolate Milk, Apple Juice, Orange Juice, Coffee and Water	Milk, Chocolate Milk, Apple Juice, Orange Juice, Coffee and Water	Milk, Chocolate Milk, Apple Juice, Orange Juice, Coffee and Water	Milk, Chocolate Milk, Apple Juice, Orange Juice, Coffee and Water
<b>Lunch</b>	<b>Lunch</b>	<b>Lunch</b>	<b>Lunch</b>	<b>Lunch</b>	<b>Lunch</b>	<b>Lunch</b>
Salad	Taco Tuesday	Salad	S.W. Coleslaw	Salad	Salad	Salad
Lettuce, Cheddar, Tomatoes, Jalapenos	Lettuce, Cheddar, Tomatoes, Jalapenos	Lettuce, Cheddar, Tomatoes, Jalapenos	Lettuce, Cheddar, Tomatoes, Jalapenos	Lettuce, Cheddar, Tomatoes, Jalapenos	Lettuce, Cheddar, Tomatoes, Jalapenos	Lettuce, Cheddar, Tomatoes, Jalapenos
Fideo Soup	Tortilla Soup	Crema de Papas	Sopa de Vegetales	Pho Soup	Sopa de Carne	Sopa de Pollo
Pechuga de Pollo	Beef	Cazuela de Tortilla de Pollo	Arroz Con Pollo	El Perrito Caliente	Pizza	Bbq Chicken Quarter Leg
Patatas Vieiras	Chicken	Sour Cream	Maduros en Gloria	Chili	Pepperoni/Meatlover/veggies	Macaroni & Cheese
Mixed Vegetables	Seasoned Rice	Mixed Vegetables	Mixed Vegetables	Chili & Cheese Sauce	Veggie Hawaiian	S.W. Cole Slaw
Plantains	Beans	Lettuce & Tomato	Chips & Salsa	Chips	Spaghuetti Bolognese	Pintos
Bread/ Rolls	Chips & Salsa	Chips & Salsa	Bread/Rolls	Seasoned Peppers	Alfredo sauce	Broccoli
Cobbler, Cake and Cookies	Tortillas /Chips & Queso, Guacamole	Tortillas /Chips & Queso, Guacamole	Cobbler, Cake and Cookies	Cobbler, Cake and Cookies	Garlic Breadstick	Bread / Rolls
	Cobbler, Cake and Cookies	Cobbler, Cake and Cookies		Cobbler, Cake and Cookies	Cobbler, Cake and Cookies	Cobbler, Cake and Cookies
Water, Tea, Soft Drinks, Coffee and Gatorade	Water, Tea, Soft Drinks, Coffee and Gatorade	Water, Tea, Soft Drinks, Coffee and Gatorade	Water, Tea, Soft Drinks, Coffee and Gatorade	Water, Tea, Soft Drinks, Coffee and Gatorade	Water, Tea, Soft Drinks, Coffee and Gatorade	Water, Tea, Soft Drinks, Coffee and Gatorade
<b>Dinner</b>	<b>Dinner</b>	<b>Dinner</b>	<b>Dinner</b>	<b>Dinner</b>	<b>Dinner</b>	<b>Dinner</b>
Carne Asada 27-29	Pollo a la Plancha	Pemil Dinner BBQ	Pollo en Salsa Creamy	Carne Asada	BURGER BAR	Pizza Bar
Assorted Veggies	Macaroni and cheese	Patatas Dulces y Calabaza Asadas	Arroz Blanco	Pure de Papas	Patatas Fritas Caseras	Espageti Meat Sauce
Steamed Broccoli	Mexican Style Sauteed Greens	Mixed Vegetables	Steamed Vegetables	Pepper Fest / Onions / Peppers	Toppings Cheese, Grilled Peppers & Onions, Pickles,	Fresh Vegetables
Tortilla Texas Toast	Tortilla Texas Toast	Tortilla Texas Toast	Tortilla Texas Toast	Tortilla Texas Toast	Buns	Tortilla Texas Toast
Flan, Assorted Gelatin, Cakes and Brownies	Flan, Assorted Gelatin, Cakes and Brownies	Flan, Assorted Gelatin, Cakes and Brownies	Flan, Assorted Gelatin, Cakes and Brownies	Flan, Assorted Gelatin, Cakes and Brownies	Flan, Assorted Gelatin, Cakes and Brownies	Flan, Assorted Gelatin, Cakes and Brownies
Water, Tea, Soft Drinks, Coffee and Gatoraid	Water, Tea, Soft Drinks, Coffee and Gatoraid	Water, Tea, Soft Drinks, Coffee and Gatoraid	Water, Tea, Soft Drinks, Coffee and Gatoraid	Water, Tea, Soft Drinks, Coffee and Gatoraid	Water, Tea, Soft Drinks, Coffee and Gatoraid	Water, Tea, Soft Drinks, Coffee and Gatoraid

Sample 3 hot meal menu.



RELATIVITY 7

# Optional and upgraded billeting

## Additional options can include:

- Upgraded flooring options including carpet and linoleum
- Low soft wall cot dividers (pipe and drape)
- High soft wall cot dividers (pipe and drape)
- Semi rigid room dividers
- Full modular interlocking hard wall systems with doors (ideal for family units)
- Additional furniture
- Electrical service at each bed



**RELATIVITY 7**

# Other options

## Adult educational facilities:

- Classroom space
- Classes in English as a Second Language
- Classes in Citizenry and Civics
- Classes in Financial Literacy
- Jobs and Vocational Training

## Facilities for children:

- School rooms
- Study rooms
- Libraries
- Teen centers
- Day care centers with padded floors and juvenile furniture
- Child beds
- Cribs and bassinets



**RELATIVITY 7**



# Other options

## Professional services:

- Legal services
- Social services
- Translation services

## Recreational facilities:

- Outdoor basketball courts
- Enclosed outdoor recreation areas
- Gyms with equipment
- Walking paths
- Libraries/Reading rooms

## Transportation services:

- School buses with drivers
- Vans with drivers
- Coaches with bathrooms for long range migrant moves



**RELATIVITY 7**

# Case study #1- Fort Bliss Texas

## Temporary City for 10,000 asylum seekers

### Case Study #1

**Migrant Housing for 10,000**

**Location : Doña Ana Range Complex, Chaparral New Mexico**

**Part of the Fort Bliss Military Reservation, Fort Bliss Texas**



**RELATIVITY 7**

# Case study #1- Fort Bliss Texas

## Temporary City for 10,000 asylum seekers

### Case study #1

- **Services Provided from Start to Finish:**

**Full Project Management.** An onsite team consisting of senior project manager, assistant project manager (day and night), quality control lead, safety manager, 22 logistics leads, full time certified plumber, full time certified electrician, full time licensed general contractor, 150(+) crew, custodial workers, with all turn-key base camp services. Membrane structure setup (housing), flooring (for tent floors), power generation services, HVAC services, field kitchen services, showers, restrooms, truck services, fleet van services, fleet trucking, shuttle buses, waste-water truck services, dining facilities, grab and go food service, potable water service, interior segregation (pipe and drape), cots and linen service, temporary storage facilities, fencing, sanitizing services, fencing and light towers.



**RELATIVITY 7**

# Case study #1- Fort Bliss Texas Temporary City for 10,000 asylum seekers



RELATIVITY 7

# Case study #1- Fort Bliss Texas Temporary City for 10,000 asylum seekers



RELATIVITY 7

# Case study #2- Homeless facility at Cashman Field Las Vegas Nevada

## Case study #2

### Assets on Site:

#### ● Services Provided from Start to Finish:

**Full Project Management.** An onsite team consisting of senior project manager, assistant project manager (day and night), quality control lead, safety manager, logistics leads, certified plumber, certified electrician, licensed general contractor, 150(+) crew, custodial workers, with all turn-key base camp services. Originally contracted for 800 people. Membrane structure setup (housing), full raised flooring (for tent floors), power generation services, HVAC services, caterings services, showers, restrooms, truck services, fleet van services, fleet trucking, shuttle buses, waste-water truck services, dining facilities, potable water service, interior segregation (pipe and drape), cots and linen service, temporary storage facilities, fencing, sanitizing services, exterior fencing and light towers.



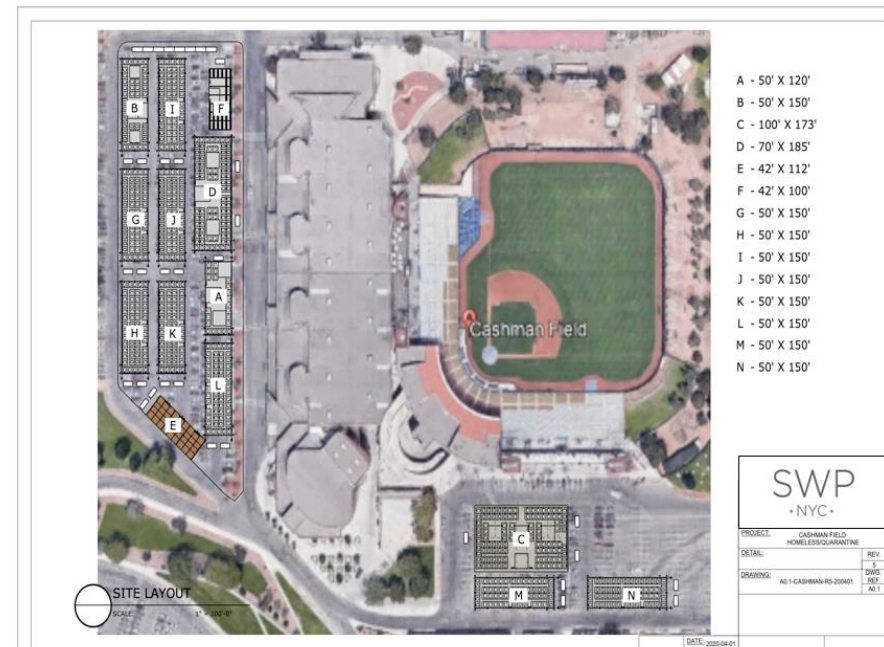
**RELATIVITY 7**

# Case study #2- Homeless facility at Cashman Field Las Vegas Nevada

As proposed:



As built:



**RELATIVITY 7**

# Case study #2- Homeless facility at Cashman Field Las Vegas Nevada

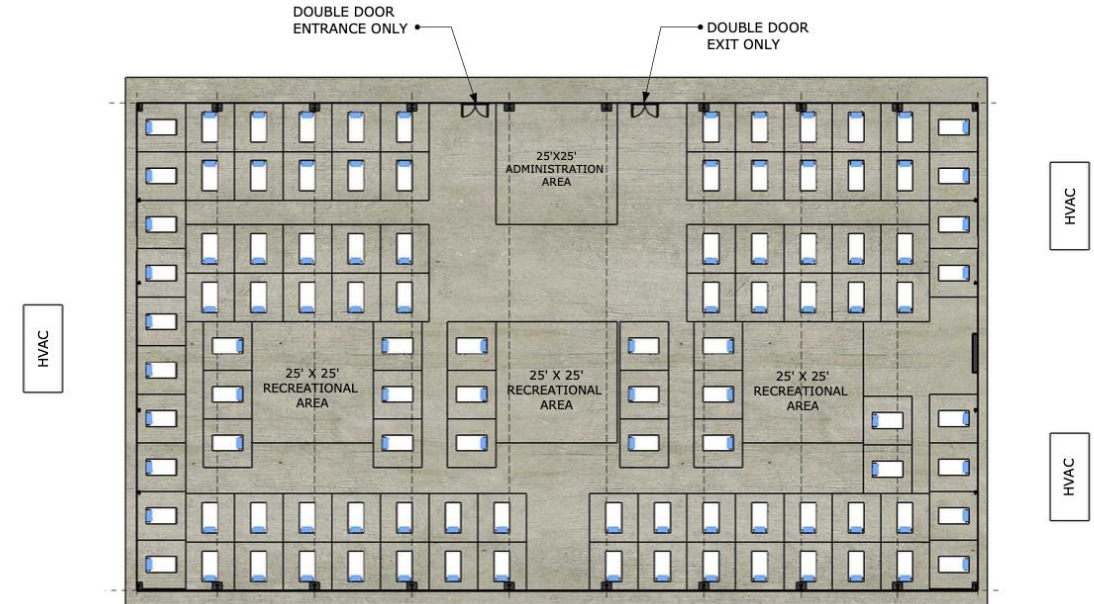
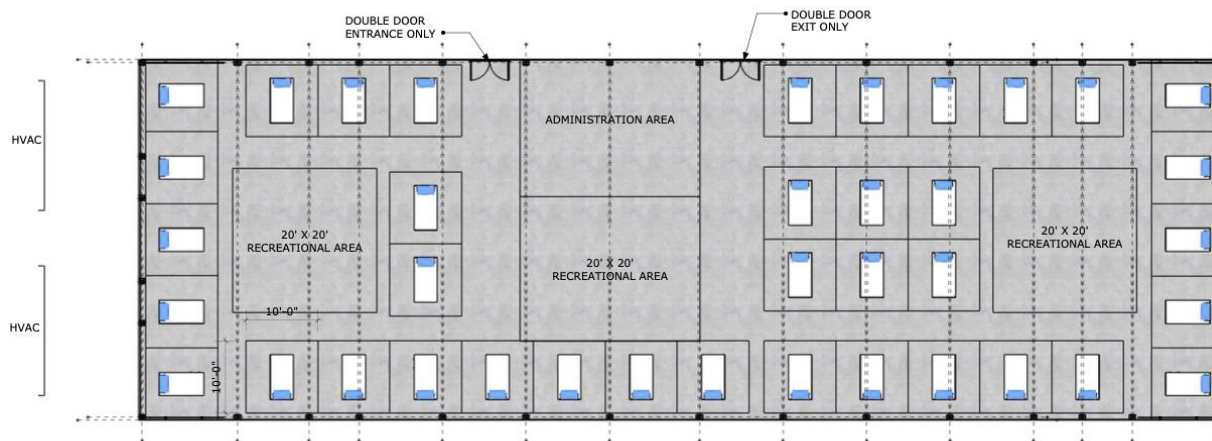


**RELATIVITY 7**



# Case study #2- Homeless facility at Cashman Field Las Vegas Nevada

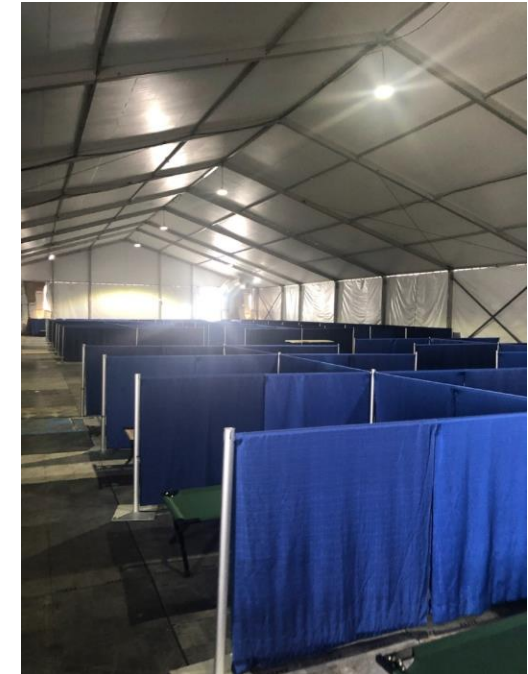
## Sample interior layouts:



RELATIVITY 7

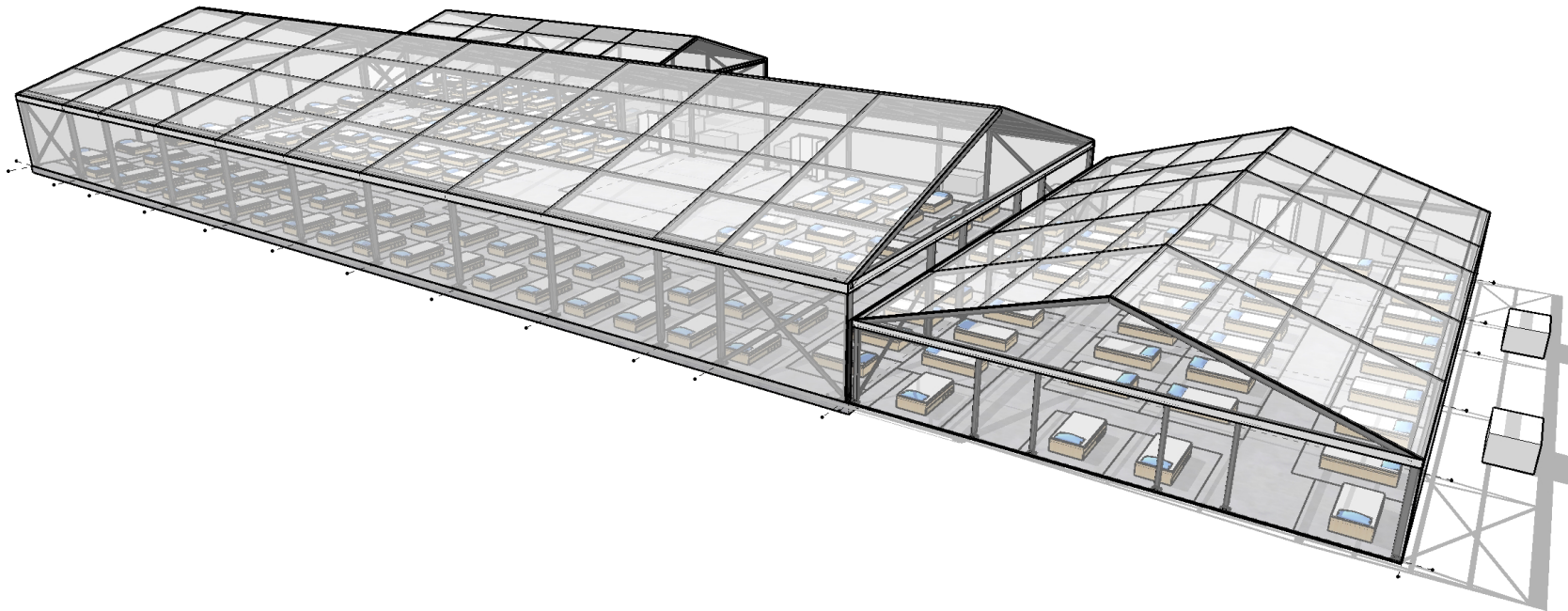
# Case study #2- Homeless facility at Cashman Field Las Vegas Nevada

**Sample interior layouts with pipe and drape dividers:**



# Case study #2- Homeless facility at Cashman Field Las Vegas Nevada

3D model:



RELATIVITY 7

# Case study #3- World Market Center, Las Vegas Nevada

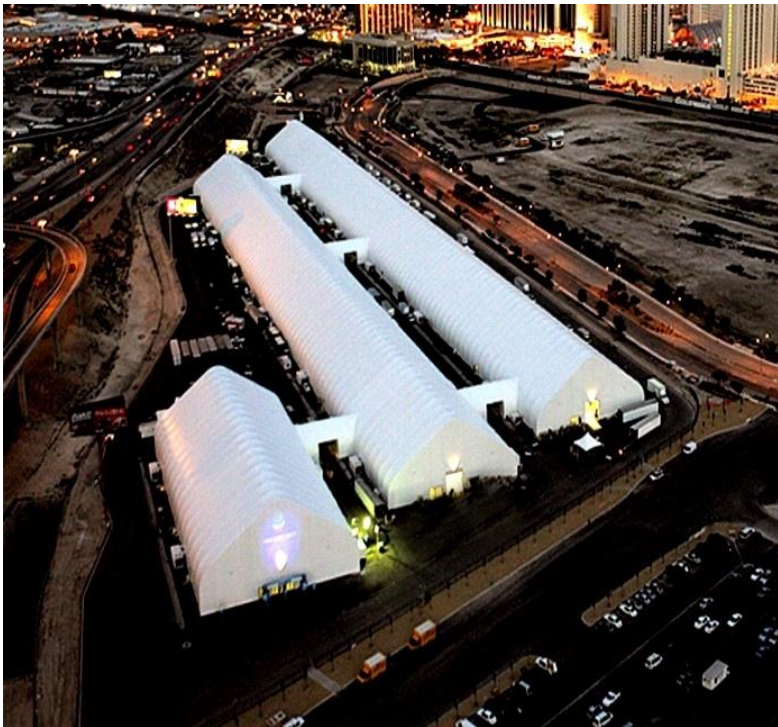
- **Sporting Events ,Special Events and Convention Pavilion.**
- **365,000 square foot semi-permanent convention space.**
- **Building Code Compliant for permanent use.**
- **Sprinklers**
- **Fire Alarms**
- **Heating and Cooling**
- **Hanging Loads for Signage**
- **14 ft. Sidewalls for Internal Theater**

**The World Market Center Pavilions are still actively in use after over 10 years, requiring minimal upkeep and are in the Guinness Book of World Records as the largest membrane structure in the world.**



**RELATIVITY 7**

# Case study #3- World Market Center, Las Vegas Nevada



RELATIVITY 7

# For follow up, further information or questions

Relativity 7 is reachable by phone at (718) 626 1524 and by email at [stuart@relativity7.com](mailto:stuart@relativity7.com) for any additional information you require, or to answer any questions you may have.



**RELATIVITY 7**