

**Canon**

imageFORCE  
C5170/C5160  
C5150/C5140

THE POWER OF  
**NEXT**



- Color A3 Multifunction Printer
- Prints up to 70 ppm (BW/Color, Letter)
- Scans up to 270 ipm  
(300 dpi BW/Color Duplex)
- Up to 4800 x 2400 dpi Print Resolution

*Device shown with optional accessories.*

**INTUITIVE BY NATURE, PRODUCTIVE FOR BUSINESS**

# THE POWER OF NEXT

To push the boundaries of what's possible, you must be bold. The **Power of Next** represents Canon's latest phase of ambitious and advanced print innovation with the comprehensive line-up of imageFORCE technology. This highly productive lineup is designed to help you **print better, do more, and stay ahead** in today's digital workplace. Backed by a strong commitment to the *Kyosei* philosophy—which promotes living and working together for the common good—Canon ushers in a new era of purposeful printing—where cutting-edge innovation meets environmental responsibility.

## imageFORCE C5100 SERIES

Thoughtfully manufactured with today's mid-to-high-volume print environments in mind, the imageFORCE C5100 series supports productive performance and intuitive design. From vibrant color prints to advanced scanning features, is designed to help organizations operate efficiently, enhance output quality, and keep up with daily demands.

### Performance for Any Pace



**70 ppm**

Optimal speed for enterprise departments with higher volume printing and scanning.



**60 ppm**

Best suited for busy enterprise spaces or schools with increased volume demands.



**50 ppm**

Perfect for busier professional settings such as fast-paced co-working spaces.



**40 ppm**

Ideal for smaller workspaces with regular color print and scan requirements.





# PRINT BETTER

## BRILLIANT QUALITY AND RELIABLE RESULTS

Achieve stunning, high-resolution prints with advanced precision, vibrant colors, and the trusted performance Canon is known for.

### EXCEPTIONAL IMAGE QUALITY

D<sup>2</sup> Exposure Technology (Defined and Detailed)



**Cutting-Edge OLED Technology:** Combines Solid State Exposure using OLED and Silicon technologies to help produce excellent image quality and consistency.



**Brilliant 4800 dpi:** Canon's unique D<sup>2</sup> Exposure technology is designed to achieve up to 4800 x 2400 dpi resolution.



**Outstanding Precision:** Help minimize color shift and provide precise color registration across printed pages.



**Crisp Text and Fine Line:** Printed text appears smooth, highly defined against colored backgrounds.



### COMMAND PRECISION IN EVERY PRINT

Canon's imagePASS is a powerful print server that helps to advance the performance of your Canon device and supports professional, high-quality results by enhancing processing speeds, sharpening color accuracy, and administering complex tasks.

The imageFORCE C5100 series also has dual controller support, which helps to expand performance by designating the native Canon controller as a primary and imagePASS-T1 controller as a secondary.

### HELP EXPAND PRINT EFFICIENCY WITH WORKFLOW SOLUTIONS

Manage tasks, track costs, and print and scan all on one platform with the optional uniFLOW Online, a powerful cloud-based solution that helps to reduce IT workload and adds flexibility to your print environment.

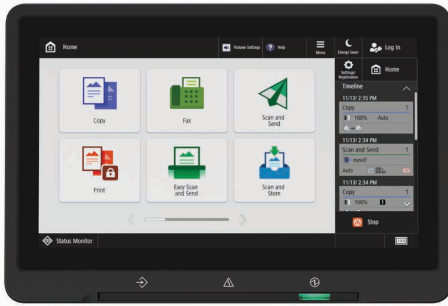
### PRINT BETTER, BUILT TO PERFORM

The imageFORCE C5100 series features Canon's unique and sturdy anti-loosening welded frame, designed to handle long-term usage and promote peak performance.

# DO MORE

## INTUITIVE WORKFLOWS FOR EVERYDAY USE

Help elevate daily efficiency with seamless workflows, simple and intuitive print technology, integrated solutions, and flexible media handling.



### SIMPLE USER INTERFACE

Each model within the imageFORCE line-up supports a consistent user interface, enabling operators to effortlessly run the device with a minimal learning curve.

- Large 10.1" responsive and intuitive touchscreen.
- Familiar interface with icons categorized by color.
- Easy customization settings for language, accessibility, and display preferences.

### VERSATILE PRINT APPLICATIONS

Support for various paper sizes, finishes, and media types that adapt seamlessly to diverse office printing needs.



Brochures



Postcards



Flyers



Booklets



Envelopes



Long Sheets  
12<sup>5</sup>/<sub>8</sub>" x 51<sup>1</sup>/<sub>4</sub>"



### CLOUD READY SOLUTIONS

Canon's imageFORCE systems have the ability to integrate seamlessly with a range of powerful Canon and third-party software to help your workflow evolve. For example, you can easily print and scan to—and from—your favorite cloud storage services with Cloud Connector.



### GAIN CONTROL OF YOUR FLEET

Centralize the management of your print fleet and maximize uptime with the support of imageWARE Enterprise Management Console. A standard feature on Canon devices, this console helps to monitor device status and consumables, apply security settings, update firmware, capture meter readings, and much more—anytime and anywhere.



### HASSLE-FREE SETUP AND MAINTENANCE

Canon U.S.A.'s range of Smart Services is designed to help support you at every stage of the device management life cycle. Benefits include:

- Setting up and deploying your devices quickly.
- Enabling proactive service and fast issue resolution.
- Access upgrades and replace parts with ease.



### PRINTING THAT PERFORMS. SCANNING THAT DELIVERS.

Performance doesn't need to stop at print. Scan speeds of up to 270 images per minute. Scan full-color documents quickly and accurately at single-pass duplex scan speeds. Whether you're digitizing reports, ID cards, or mixed media files, you can capture clean, high-resolution scans that integrate seamlessly into your digital workflows.



# STAY AHEAD

## FUTURE-READY. SECURITY-FOCUSED. ECO-CONSCIOUS.

Make the move forward with cutting-edge print technology that is built to help your organization be more productive, and more prepared for the unexpected.

### SECURITY FEATURES TO HELP SAFEGUARD YOUR INFRASTRUCTURE

Defend your data and your device with robust security features designed with the modern workplace in mind. These include:

**Security Environment Estimation:**

Recommends security settings based on the device's operating environment.



**Verify System at Startup:** At device start-up, helps to verify that the boot process, firmware, and applications have not been altered or tampered with. Includes automatic recovery of boot process.

**FIPS 140-3 Storage Encryption:**

A U.S. government standard for cryptographic modules, supporting data encryption and security in hardware and software systems.



**SIEM Integration:** Integrates your print devices into your universal security and event monitoring strategy.

**Trellix™ Embedded Control:**

Utilizes whitelisting to help prevent execution of unrecognized malware or tampering of existing firmware/applications.



**Control Access:** Provides flexible authentication methods for PIN, username/password, or badge authentication accessibility, and display preferences.



### CANON'S FUTURE-READY UNIFIED FIRMWARE PLATFORM

With Canon's Unified Firmware Platform (UFP), a common source code for firmware development embedded within the imageFORCE products, your device can benefit from regular updates—including additional functionality to existing models—and the latest features.



### BUILT WITH A FOCUS ON SUSTAINABILITY

From product design to power use, Canon's commitment to the environment takes center stage with the imageFORCE series of printers. Features include:

**Low Energy Consumption:** A combination of highly efficient fusing technologies and low-melting-point toner helps to minimize power requirements and achieve low energy consumption.

**Cardboard Packaging:** Designed with more recycled materials than ever before and featuring both interior and exterior cardboard components.

**Prestigious Certifications:** ENERGY STAR® certified and Rated EPEAT Gold and EPEAT Climate+.

## CONFIGURATION OPTIONS

# imageFORCE C5170/C5160 C5150/C5140

### Internal Output Options



#### Inner 2Way Tray-M1

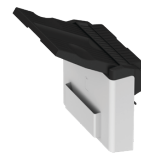
- 2-tray, 100-sheet capacity each tray



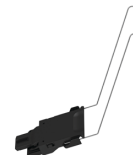
#### Inner Finisher-N1

- 2-tray, 550-sheet capacity
- Corner and double stapling up to 50 sheets
- Supports Staple-Free Stapling and Staple on Demand

### Long Sheet Options



#### Long Sheet Catch Tray-D1



#### Long Sheet Feeding Tray-A1

### Finishing Options



#### Staple Finisher Lite-A1\*

- Staple capacity of up to 65 sheets
- Output capacity of up to 1,750 sheets
- Supports Staple on Demand



#### Staple Finisher-AB3

- 2-tray, up to 3,250-sheet capacity
- Corner and double stapling up to 65 sheets
- Supports Staple-Free Stapling and Staple on Demand



#### Booklet Finisher-A2 With Tri-Fold

- 2-trays, up to 3,250 sheet capacity
- Corner and double stapling up to 65 sheets
- Supports Staple-Free Stapling and Staple on Demand
- Booklet-making up to 20 sheet
- Built in C-Fold up to 6 sheets

### Paper Folding Option



#### Paper Folding Unit-L1

- Offers Z-Fold

### Controller Option



#### imagePASS-T1

Note: Device includes standard support for UFR II/PCL/PS Printing.



### Paper Feeding Options



#### Cassette Feeding Unit-AY1

- Two 550-sheet cassettes
- Supports up to 12" x 18"
- 14 lb. Bond to 110 lb. Cover



#### High Capacity Cassette Feeding Unit-F1

- Up to 2,450-sheet capacity, Letter Only
- 14 lb. Bond to 110 lb. Cover



#### Paper Deck-F2

- Up to 2,700-sheet capacity, Letter Only
- 14 lb. Bond to 140 lb. Index



#### Cabinet Type-V

\* Requires the following Unified Firmware Platform (UFP) versions: V4.1 or later: imageFORCE C5100 series

Please reference specification sheet and configurator tool on Canon's website for detailed specifications and supported configurations.



# PRINTER SPECIFICATIONS

## imageFORCE C5170/C5160 C5150/C5140

Technology/Type	OLED/A3 Color Multifunction
Core Functions	Standard: Print, Copy, Scan, Send, Store Optional: Fax, Up to 4 lines
Print/Copy Speed (BW and Color)	<p>imageFORCE C5170 Up to 70 ppm<sup>1</sup> (Letter) Up to 42 ppm (Letter-R) Up to 40 ppm (Legal) Up to 35 ppm (11" x 17")</p> <p>imageFORCE C5160 Up to 60 ppm<sup>1</sup> (Letter) Up to 36 ppm (Letter-R) Up to 34 ppm (Legal) Up to 32 ppm (11" x 17")</p> <p>imageFORCE C5150 Up to 50 ppm<sup>1</sup> (Letter) Up to 30 ppm (Letter-R) Up to 29 ppm (Legal) Up to 27 ppm (11" x 17")</p> <p>imageFORCE C5140 Up to 40 ppm<sup>1</sup> (Letter) Up to 24 ppm (Letter-R) Up to 23 ppm (Legal) Up to 20 ppm (11" x 17")</p>
Scan Speed (ipm, BW and Color, Letter)	Single-Scanning 135/135 (300 x 300 dpi, Send), 80/80 (600 x 600 dpi, Copy), Double-sided Scanning 270/270 (300 x 300 dpi, Send), 160/90 (600 x 600 dpi, Copy)
Memory	6.0 GB RAM
Solid-State Drive	Standard: 256 GB Optional: 1TB
Warm-up Time	<p>Quick Startup Mode: Approx. 4 Seconds<sup>2</sup></p> <p>From Sleep Mode: Approx. 7 Seconds<sup>3</sup> (imageFORCE C5170) Approx. 6 Seconds<sup>3</sup> (imageFORCE C5160/C5150/C5140)</p> <p>From Power On: Approx. 6 Seconds<sup>4</sup></p>
Paper Capacity (Letter, 20 lb. Bond)	Standard: 1,200 Sheets Maximum: 6,350 Sheets
Supported Media Types	<p>Paper Cassettes: Thin, Plain, Recycled, Eco, Color, Heavy, Bond, Transparency, Pre-punched, Letterhead, Envelope (Requires standard envelope feeder attachment)</p> <p>Multi-Purpose Tray: Thin, Plain, Recycled, Eco, Color, Heavy, Coated, Tracing, Bond, Transparency, Label, Pre-punched, Letterhead, Tab, Envelope</p>
Supported Media Sizes	<p>Upper Cassette: Letter, Executive, Statement-R, Envelopes [COM10 (No.10), Monarch, DL, ISO-C5], Custom Size (3-7/8" x 5-7/8" to 11-3/4" x 8-1/2")</p> <p>Lower Cassette: 12" x 18", 11" x 17", Legal, Letter, Letter-R, Executive, Statement-R, Envelopes [COM10 (No.10), Monarch, DL, ISO-C5], Custom size (3-7/8" x 5-7/8" to 12" x 18")</p> <p>Multi-Purpose Tray: 12" x 18", 11" x 17", Legal, Letter, Letter-R, Executive, Statement, Statement-R, Envelopes[COM 10 (No.10), Monarch, DL, ISO-C5], Custom size/Free Size (3-7/8" x 5-1/2" to 12-5/8" x 18"), Long sheet<sup>5</sup> (3-7/8" x 18" to 12-5/8" x 51-1/4")</p>
Supported Media Weights	<p>Upper Cassette: 14 lb. bond to 140 lb. index (52 to 256 gsm) Lower Cassette: 14 lb. bond to 110 lb. cover (52 to 300 gsm)</p> <p>Multi-Purpose Tray: 14 lb. bond to 110 lb. cover (52 to 300 gsm)</p> <p>Duplexing: 14 lb. bond to 140 lb. index (52 to 256 gsm)</p>
Dimensions (W x D x H)	24-3/8" x 28-1/2" x 36-7/8" (620 x 722 x 937 mm) <sup>6</sup>
Weight	Approx. 231.5 lb. (105 kg) <sup>7</sup>
Environmental Standards	ENERGY STAR® certified EPEAT Gold EPEAT Climate+

<sup>1</sup> When paper is fed from Upper Cassette, High Capacity Cassette, Feeding Unit-F1, or Paper Deck Unit-F2.

<sup>2</sup> Time from device power-on to when the copy icon appears and is enabled to operate on the touch panel display.

<sup>3</sup> Time from exiting Sleep mode to when printing is operational.

<sup>4</sup> Time from device power-on until copy ready (not print reservation).

<sup>5</sup> Long Sheet Feeding Tray-A1 is required.

<sup>6</sup> Includes main unit and standard ADF.

<sup>7</sup> Includes consumables.

# WHAT WILL YOU CREATE WITH THE POWER OF NEXT?



**Canon**

**Trellix**



[usa.canon.com/business](https://usa.canon.com/business)

As an ENERGY STAR® Partner, Canon U.S.A., Inc. has certified this model as meeting the ENERGY STAR energy efficiency criteria through an EPA recognized certification body. ENERGY STAR and the ENERGY STAR mark are registered U.S. marks. Canon, imageFORCE, imagePASS, and the GENUINE logo are registered trademarks or trademarks of Canon Inc. in the United States and may also be registered trademarks or trademarks in other countries. Canon products offer certain security features, yet many variables can impact the security of your devices and data. Canon does not warrant that use of its security features or recommendations will prevent security issues. Customers should perform their own due diligence and consult with their security expert to determine what security features to implement for their organization. Nothing herein should be construed as legal or regulatory advice concerning applicable laws; customers must have their own qualified counsel determine the feasibility of a solution as it relates to regulatory and statutory compliance. Some security features may impact functionality/performance; you may want to test these settings in your environment. Trellix and the Trellix logo are trademarks or registered trademarks of Musarubra US LLC or its subsidiaries in the U.S. and other countries. All other referenced product names and marks are trademarks of their respective owners. All printer output images are simulated. All features presented in this brochure may not apply to all Series and/or products and may be optional; please check with your Canon Authorized Representative for details. Products shown with optional accessories. Subscription to a third-party cloud service required. Subject to third-party cloud service providers terms and conditions. uniFLOW is a registered trademark of NT-ware Systemprogrammierung GmbH. Canon U.S.A. does not provide legal counsel or regulatory compliance consultancy, including without limitation, Sarbanes-Oxley, HIPAA, GLBA, Check 21, or the USA Patriot Act. Each customer must have its own qualified counsel determine the advisability of a particular solution as it relates to regulatory and statutory compliance. Specifications and availability subject to change without notice. Not responsible for typographical errors.

©2025 Canon U.S.A., Inc. All rights reserved.

06/25-1853-13007



**Canon**

imageFORCE C7165

# THE POWER OF NEXT

Elevate your office with a compact and powerful device that can handle your high-speed color print needs, plus light production applications.

- Color A3 Multifunction Printer
- Prints up to 65/65 ppm (BW/Color, Letter)
- Up to 4800 x 2400 dpi Print Resolution
- Versatile Media Support



*Device shown with optional accessories.*



## imageFORCE C7165

Exceedingly sharp, beautifully efficient, and undeniably user-friendly. The imageFORCE C7165 model introduces the next era in Canon's print technology.



## DISCOVER THE POWER OF NEXT

Canon's advanced multifunction printer technology is designed to empower your business to excel with outstanding print quality, incredible versatility, and robust security features. Delivering razor-sharp documents and vibrant visuals, the imageFORCE C7165 model helps streamline workflows, enhance office productivity, keep light production print jobs in-house, and support sustainability efforts, all while providing a reliable, compact, and user-friendly solution that can adapt to the evolving needs of many industries.

**Education Environments**  
(Higher Education and K-12)

**Healthcare**

**Legal**

**Creative Agencies**

**Marketing Departments**

**Small-Mid Size Growing Business**

These environments, and more, can benefit from the compact size and powerful capabilities of the imageFORCE C7165 model.



# PRINT BETTER. DO MORE. STAY AHEAD.

Push the boundaries of what's possible. The **imageFORCE C7165** multifunction printer is designed to support brilliant high-volume and high-quality output, color accuracy and consistency from the first to the last page, advanced versatility, and long-lasting operations.

Go bolder, sharper, and more precise with Canon's own D<sup>2</sup> Exposure OLED print technology for outstanding clarity and vibrancy in every print.

## PRINT BETTER.

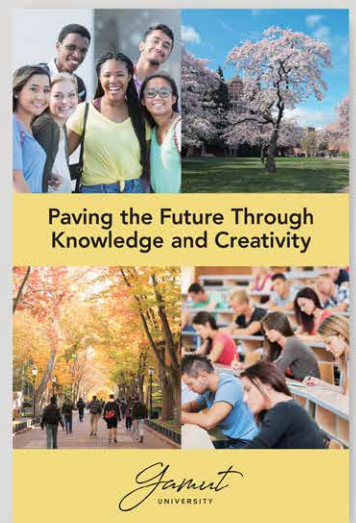
Every print tells a story. With Canon's advanced technology, your story can be told with incredible clarity and vibrancy. From the razor-sharp precision of D<sup>2</sup> Exposure to colors that captivate, documents produced with the imageFORCE C7165 model can not only meet your expectations but exceed them. Each print is a step forward, empowering your business to present brilliant content, paving the way for what's next.

## DO MORE.

Easily take on diverse print jobs, streamline workflows, and boost print productivity with user-friendly features that make professional-level print capabilities possible in-house. In today's fast-paced world, adaptability is key. The versatile imageFORCE C7165 model gives you the flexibility to tackle what's next, so that your team can handle printing challenges with ease and efficiency.

## STAY AHEAD.

Be prepared for an ever-changing landscape with a reliable print solution. Canon's Unified Firmware Platform (UFP) allows the imageFORCE C7165 model to be updated with advanced capabilities, new functionality, and security features on an ongoing basis, so that the device can help meet daily demands. With the power of this technology, you're not just keeping up—you're leading what's next.



# EMPOWER YOUR CREATIVE POTENTIAL WITH A HIGHLY EFFECTIVE PLATFORM



## OUTSTANDING PRECISION

Deliver exceptional clarity with our innovative print technology. Capture details with precision, whether it's a comprehensive financial report or an intricate brochure. D<sup>2</sup> Exposure, Canon's unique OLED technology, achieves up to 4800 x 2400 dpi resolution to provide sharp details and results with minimal color shift for excellent color registration.



## VIVID VISUALS

When your communication needs to captivate and inspire, Canon's technology can help you push the boundaries of visual expression. Preset color profiles can be implemented at the push of a button to help optimize output, no matter who is printing. Vibrant colors and highly detailed images can help elevate your marketing materials and make presentations unforgettable.



## POLISHED FINISH

Achieve incredible results with advanced finishing options. Have the power to easily streamline workflows and boost productivity with a user-friendly print solution that helps support your in-house capabilities. Deliver professional-quality prints, from crisp brochures to polished reports, with a step-by-step finishing wizard to make setup a breeze.



## VERSATILITY MADE EASY

Expanded capability gives you the flexibility to take on what's next. With extensive handling of coated paper, long sheet feed, and water-resistant media, you can easily take on diverse print jobs, streamline workflows, and help boost productivity. Plus, support for dual controller is available for environments that want to leverage both optional Fiery-powered imagePASS and standard print controllers.\* User-friendly solutions are designed to help make professional capabilities easily achievable in-house.



## EFFICIENCY, REDEFINED

Streamline complex tasks with an intuitive print solution. The simple user interface has large, easy-to-recognize icons that are categorized by color segment for seamless identification. Additionally, the multi-purpose tray has a media sensor that can detect the paper type and automatically adjust specific settings based on the media.

\*To leverage the dual controller feature, the device native controller must be connected as the main line.







## EXTENSIVE CONNECTIVITY

Stay connected with optional cloud solutions. With uniFLOW Online, you can experience a powerful cloud-based solution that can streamline printing, scanning, and accounting for organizations of all sizes. By integrating seamlessly with compatible Canon devices, it can help enhance productivity through secure, mobile printing, advanced scanning, and cost tracking, all managed from a single platform. This solution is designed to help reduce IT burdens and foster flexibility, making it an essential tool for businesses aiming to optimize their print management processes. Additionally, Canon's Cloud Connector solution\*\* can help you effortlessly print and scan to your favorite cloud storage services, making your everyday office tasks simpler and more efficient.



## SECURITY FEATURES THAT ADAPT

The imageFORCE C7165 model offers a range of security capabilities to help facilitate the confidentiality, accessibility, and availability of your data. For added peace of mind, this model supports Trellix™ Embedded Control that utilizes a whitelist to help protect against cyber threats. Not sure where to begin? The security environment estimation tool can be used to offer recommended security settings based on usage environment.



## PREDICTABLY RELIABLE

Your organization needs reliable, high-quality technology to help you keep operations running smoothly. The imageFORCE C7165 model stands out with its unique anti-loosening welded frame. This design helps provide long-term strength and stability, supporting peace of mind and sustained performance for your business.



## SUSTAINABILITY FEATURES

The imageFORCE C7165 model boasts features that can help you limit waste, and is designed with consideration for minimizing energy consumption. Canon's commitment to sustainability efforts is demonstrated through our increased use of recycled materials compared to previously released models, and through the use of cardboard interior and exterior packaging for the main unit. The imageFORCE C7165 model is ENERGY STAR® certified, achieved EPEAT® Gold with EPEAT® Climate+, and offers a low Typical Electricity Consumption (TEC) rating.

\*\* Not available at launch. Check for availability.

## Internal Output Options



**Inner 2Way Tray-M1**

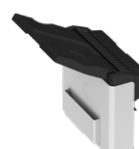
- 2-tray, 100-sheet capacity each tray



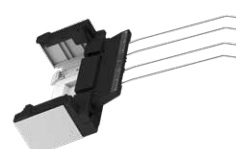
**Inner Finisher-N1**

- 2-tray, 550-sheet capacity
- Corner and double stapling up to 50 sheets
- Supports Staple-Free Stapling and Staple on Demand

## Long Sheet Options\*\*



**Long Sheet Catch Tray-D1**



**Long Sheet Feeding Tray-B1**

## Finishing Options



**Staple Finisher-AB3**

- 2-tray, up to 3,250-sheet capacity
- Corner and double stapling up to 50 sheets
- Supports Staple-Free Stapling and Staple on Demand



**Booklet Finisher-A2 With Tri-Fold**

- 2-trays, up to 3,250 sheet capacity
- Corner and double stapling up to 65 sheets
- Supports Staple-Free Stapling and Staple on Demand
- Booklet-making up to 20 sheet
- Built in C-Fold up to 6 sheets

## Paper Folding Option



**Paper Folding Unit-L1**

- Offers Z-Fold

## Controller Option



**imagePASS-T1**

Note: Device includes standard support for UFR II/PCL/PS Printing.



## Paper Feeding Options



**Cassette Feeding Unit-AY1**

- Two 550-sheet cassettes
- Supports up to 12" x 18"
- 14 lb. Bond to 110 lb. Cover



**High Capacity Cassette Feeding Unit-F1**

- Up to 2,450-sheet capacity, Letter Only
- 14 lb. Bond to 110 lb. Cover



**Cabinet Type-V**

- Offers storage



**Paper Deck-F2**

- Up to 2,700-sheet capacity, Letter Only
- 14 lb. Bond to 140 lb. Index

\*\* Not available at launch. Check for availability.

Technology/Type	OLED/A3 Color Multifunction
Core Functions	<b>Standard:</b> Print, Copy, Scan, Send, Store <b>Optional:</b> Fax, Up to 4 lines
Print Speed (Color/BW)	Up to 65 ppm (Letter)
Scan Speed (Color/BW, Letter, 300 dpi)	Up to 270/270 ipm
Memory	6.0 GB RAM
Solid-State Drive	<b>Standard:</b> 256 GB <b>Optional:</b> 1 TB
First-Copy-Out Time (Letter)	As fast as 2.7 seconds (BW) / 3.7 seconds (Color)
Warm-up Time	<b>Quick Startup Mode:</b> Approx. 4 Seconds <sup>1</sup> <b>From Sleep Mode:</b> Approx. 7 Seconds <sup>2</sup> <b>From Power On:</b> Approx. 6 Seconds <sup>3</sup>
Print Resolution (dpi)	Up to 4,800 x 2,400
Standard Page Description Languages	UFR II, PCL6/PCL5, Adobe® PostScript® 3™
Paper Capacity (Letter, 20 lb. bond)	<b>Standard:</b> 1,200 Sheets <b>Maximum:</b> 6,350 Sheets
Supported Media Sizes	<b>Upper Cassette:</b> Letter, Executive, Statement-R, Envelope [COM10 (No.10), Monarch, DL, ISO-C5], Custom Size (3-7/8" x 5-7/8" to 11-3/4" x 8-1/2") <b>Lower Cassette:</b> 12" x 18", 11" x 17", Legal, Letter, Letter-R, Executive, Statement-R, Envelope [COM10 (No.10), Monarch, DL, ISO-C5], Custom size (3-7/8" x 5-7/8" to 12" x 18") <b>Multi-Purpose Tray:</b> <b>Standard Size:</b> 12" x 18", 11" x 17", Legal, Letter, Letter-R, Executive, Statement, Statement-R, Envelope [COM 10 (No.10), Monarch, DL, ISO-C5] <b>Custom Size/Free Size:</b> (3-7/8" x 5-1/2" to 12-5/8" x 18"), Long sheet <sup>2</sup> (3-7/8" x 18" to 12-5/8" x 51-1/4")
Supported Media Weights	<b>Upper Cassette:</b> 14 lb. Bond to 140 lb. Index (52 to 256 gsm) <b>Lower Cassette:</b> 14 lb. Bond to 110 lb. Cover (52 to 300 gsm) <b>Multi-Purpose Tray:</b> 14 lb. Bond to 110 lb. Cover (52 to 300 gsm) <b>Duplexing:</b> 14 lb. Bond to 140 lb. Index (52 to 256 gsm)
Supported Media Types	<b>Paper Cassettes:</b> Thin, Plain, Recycled, Eco, Color, Heavy, Bond, Transparency, Pre-punched, Letterhead, Envelope (Requires standard envelope feeder attachment to be installed) <b>Multi-Purpose Tray:</b> Thin, Plain, Recycled, Eco, Color, Heavy, Bond, Transparency, Pre-punched, Letterhead, Envelope, Coated, Tracing, Label, Tab, Water Resistant (Synthetic)
Power Requirements	110-127V, 60Hz, 12A
Power Consumption	<b>Maximum:</b> Approx. 1,800 W <b>Sleep mode:</b> Approx. 0.5 W <sup>5</sup> <b>Typical Electricity Consumption (TEC) Rating<sup>6</sup>:</b> 0.71 kWh
Device Security	Protecting SSD Data [SSD Data Encryption (FIPS140-3), SSD Lock], Standard SSD Initialize, Initialize (NIST 800-88 PURGE LEVEL), Trusted Platform Module (TPM 2.0), Job Log Conceal Function, Protecting MFP Software Integrity: Verify System at Startup (NIST SP800-193: Protection), Checking MFP Software Integrity & Platform Firmware Resiliency: Automatic System Recovery (NIST SP800-193: Recovery), Runtime Intrusion Detection: Trellix Embedded Control, HCD-PP Common Criteria Certification (Validation Pending)
Environmental Standards	ENERGY STAR® Certified EPEAT® Gold with Climate+
Dimensions (W x D x H)	28-1/2" x 28-1/2" x 36-7/8" (723 x 722 x 937 mm) <sup>7</sup>
Weight	Approx. 253.5 lb. (115 kg) <sup>8</sup>
Key Standard Security Features	Security Environment Estimation SIEM Integration Verify System at Startup with Automatic Recovery <sup>9</sup> Trellix Embedded Control <sup>9</sup> TPM 2.0 SSD Data Encryption (FIPS140-3) SSD Initialize Forced Hold Printing Encrypted Secure Print Encrypted/Digital Signature PDF IPsec SMB 3.0 TLS 1.3

<sup>1</sup> Time from device power-on to when the copy icon appears and is enabled to operate on the touch panel display.

<sup>2</sup> Time from exiting Sleep mode to when printing is operational.

<sup>3</sup> Time from device power-on until copy ready (not print reservation).

<sup>4</sup> Long Sheet Feeding Tray-B1 is required.

<sup>5</sup> 0.5 W is not available in all circumstances due to certain settings.

<sup>6</sup> Based on ENERGY STAR Product Specification for Imaging Equipment Version 3.2.

<sup>7</sup> Includes main unit and standard ADF.

<sup>8</sup> Includes Consumables.

<sup>9</sup> This feature is off by default and must be turned on by the user. Warm-up times are affected once turned on.

Note: See Product Specifications Sheet for a complete list of standard and optional security features.



# WHAT WILL YOU CREATE WITH THE POWER OF NEXT?



**Canon**

**Trellix**

**CANON  
GENUINE**  
TONER, CARTRIDGE  
& PARTS



[USA.CANON.COM](https://usa.canon.com)

As an ENERGY STAR® Partner, Canon U.S.A., Inc. has certified this model as meeting the ENERGY STAR energy efficiency criteria through an EPA recognized certification body. ENERGY STAR and the ENERGY STAR mark are registered U.S. marks. Canon, imageFORCE, imagePASS, and the GENUINE logo are registered trademarks or trademarks of Canon Inc. in the United States and may also be registered trademarks or trademarks in other countries. Canon products offer certain security features, yet many variables can impact the security of your devices and data. Canon does not warrant that use of its security features or recommendations will prevent security issues. Customers should perform their own due diligence and consult with their security expert to determine what security features to implement for their organization. Nothing herein should be construed as legal or regulatory advice concerning applicable laws; customers must have their own qualified counsel determine the feasibility of a solution as it relates to regulatory and statutory compliance. Some security features may impact functionality/performance; you may want to test these settings in your environment. Trellix and the Trellix logo are trademarks or registered trademarks of Musarubra US LLC or its subsidiaries in the U.S. and other countries. All other referenced product names and marks are trademarks of their respective owners. All printer output images are simulated. All features presented in this brochure may not apply to all Series and/or products and may be optional; please check with your Canon Authorized Dealer for details. Products shown with optional accessories. Subscription to a third-party cloud service required. Subject to third-party cloud service providers terms and conditions. uniFLOW is a registered trademark of NT-ware Systemprogrammierung GmbH. Canon U.S.A. does not provide legal counsel or regulatory compliance consultancy, including without limitation, Sarbanes-Oxley, HIPAA, GLBA, Check 21, or the USA Patriot Act. Each customer must have its own qualified counsel determine the advisability of a particular solution as it relates to regulatory and statutory compliance. Specifications and availability subject to change without notice. Not responsible for typographical errors.

©2024 Canon U.S.A., Inc. All rights reserved.

09/24-1969