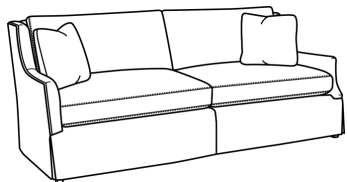


Country Estate Collection

PROFESSIONALLY DESIGNED COLLECTIONS OF FURNISHINGS
FOR THE FUNERAL INDUSTRY



furnitureforfuneralhomes.com

furnitureforfuneralhomes.com

info@ffhdesign.com

262.806.7143

Welcome to **furniture**forfuneralhomes.com

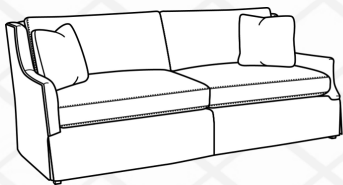
We've spent nearly 20 years serving the funeral industry nationwide with professional, fully-custom interior design. In that time we've had the privilege of serving well over a hundred funeral homes from various geographic areas, different cultures and with different economic abilities. And while we love providing owners with full-service interior design, from front of the house to back of the house - from floors to ceilings, we also want to serve the broader community of funeral homes, by offering professionally designed, entire rooms full of furniture, *without actually having to hire a designer*. We've used our expertise to pull together furniture collections where you, the owner, can browse for the pieces you need to complete your space. Create an entire room or entire facility with furnishings at the right price - already designed - and available to order. We've combed through hundreds of furniture and furnishings items to professionally curate our collections. From carpet and LVT to furniture and fabrics for your window treatments, each piece within a collection is meant to work seamlessly with another. No guesswork. Just find a collection that best suites your brand and tastes, choose the items that work for you, complete the request for quote form and we'll provide a quote. It's that easy. Our collections are shown both in print and for download online at **furniture**forfuneralhomes.com. And for further help, we've added paint color selections and other design advice on our website.

All products shown have been carefully selected for the funeral industry. Arm height and seat height are appropriate for all age groups. Seat cushions are crafted with commercially viable materials that will hold-up over time. Furniture finishes are done with a several step process ensuring many years of enjoyment. And all furnishings come with their own manufacturer warranty. That's peace of mind.

We want to make the buying decision easy, but it doesn't stop there. Shipment of items will either come UPS, FedEx or Common Carrier. For common carrier items, we'll arrange white glove delivery so you can expect items to be delivered inside your funeral home and placed according to your requirements. Thank you for interest and happy browsing!



Owner & Managing Director



furnitureforfuneralhomes.com

furnitureforfuneralhomes.com

info@ffhdesign.com

262.806.7143



From the Country Estate Collection

Camden Sofa

Pleated, rolled arms coupled with a waterfall skirt, gives the Camden Sofa a relaxed sophisticated look. Upholstered in a luscious yet durable distressed navy velvet.

Made in the USA

Dimensions 79w 36d 34h



Accent pillow fabric.

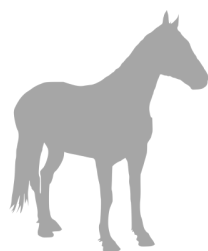
Primary pillow blue with tan welt



Camden Loveseat

Made in the USA

Dimensions 55w 36d 34h



From the Country Estate Collection

Ashland Accent Chair

Lattice back detail with upholstered seat and back. We used a paisley fabric rich in blues, cream and bronze tones. Timeless.

Made in the USA

Dimensions 24.5w 27d 40h



Collins Starburst Table

Warm, chestnut distressed Tobacco finish using Oak solids and veneers. Pairs perfectly with our Ashland Accent Chair.

Dimensions 24w 24d 24h





From the Country Estate Collection

Penman Sofa Table

Rectangular top with gallery elevated by squared tapering corner posts. Two gallery shelves. The apron rail is fitted with a drawer. Oak solids and Oak Veneer.

Dimensions 48w 14d 32.5h



From the Country Estate Collection

Monroe Ebony Chairside Table

Select solids and veneers, this simply elegant chairside table has 3 drawers and Antique Brass hardware.

Dimensions 14w 22d 26h



From the Country Estate Collection

Laramie Registry Console

Solid hardwoods and veneers, the Jackson Display Console includes 6 doors with seeded glass, 2 adjustable wood shelves behind each door and 3 drawers on top.

Dimensions 66w 19d 42h



From the Country Estate Collection

Monroe Accent Chest

Warm chestnut distressed lattice combined with weathered ebony paint finish. Antique Brass gun barrel latch at doors.

Dimensions 40w 18d 43.5h

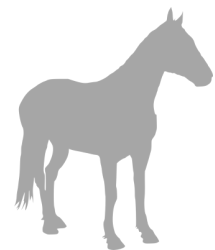


From the Country Estate Collection

Jackson Rocking Chair

Wood, leather and nailhead trim highlight this amazingly comfortable, stylish western rocker. Charred timber finish. Inspired by campfires and comradery. Spindle back design completes the look.

Dimensions 23.5w 27d 40h



From the Country Estate Collection

Penman Arrangement Table

A mix of comfortable Oak solids and veneers with a warm, distressed medium finish. Comes with two 22" leaves allowing for much flexibility with this table.

Dimensions 60w 40d 30h without leaves (26.25h to bottom of apron)

With leaves extends to 104"

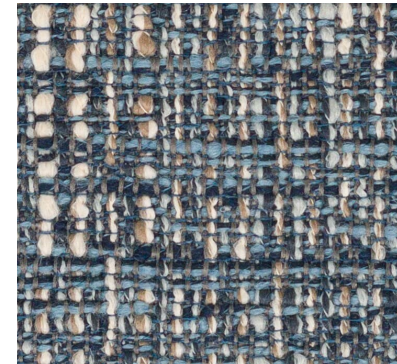
From the Country Estate Collection

Penman Armchair

Oak solids and veneers with distressed medium honey course finish help to create this manor-like finish. Beautiful English ladder-back detail slats combine with shaped leg to complete the look. Blue and neutral woven fabric (shown below) is used as the seat upholstery fabric.

Use as accent chairs or perfectly paired with the Penman Arrangement Table .

Dimensions 22w 25d 38h



Woven seat fabric



From the Country Estate Collection

Penman Accent Chair

Graceful oval back is accented with a colonnade of shaped slats above the upholstered seat. Seat upholstered in blue and neutral highly durable, woven fabric shown below.. Distressed Oak solids and veneers. Seamlessly complements the Penman Arrangement Table and Penman Arm Chair..

Dimensions 22w 23d 39h



Woven seat fabric



From the Country Estate Collection

Morgan Occasional Chair

Upholstered with colonial linen floral on in/out backs and aged warm chocolate faux leather on seats.

Made in the USA

Dimensions 23w 23d 38.5h



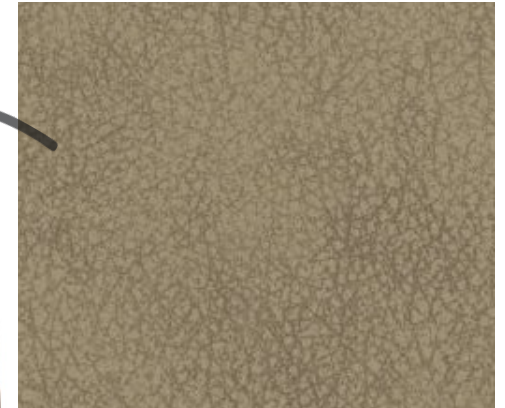
From the Country Estate Collection

Augusta Bariatric Chair

Buckskin distressed faux leather upholstery. Rated to 500lbs.

Made in the USA

Dimensions 34w 26d 39h



From the Country Estate Collection

Laurel Chapel Chair

Now available in both 18" (standard) and our new 20" wide frames.

Stacking 8 to 10 high, the Laurel Chapel Chair is easy for families to sit for awhile, easy for owners to reposition, easy to store. Upholstered in a linen-tone commercial fabric with bronze colored powder coat frame. Quantity discounts may apply.

Made in the USA

Dimensions 18/20w 23d 36h



From the Country Estate Collection

Laurel Hand Truck and Pan Dolly

The 3-wheel hand truck is specifically manufactured for our stacking chapel chairs. Easy stack up to 8-10 chairs—easy to move within the facility. Fits through standard doorway. The Pan Dolly may be used in multiples, to stack and store for easy set up and take down.

Dimensions 26.8w 25d 49.6d (hand truck)

21.3w 24.2d 5h (pan dolly)

From the Country Estate Collection

Twine Table Lamp

This lamp features a heavily antiqued gold finish with hand bound twine carving. Dark bronze accents and black marble foot. Uses 150w, 3-way bulb (or LED equivalent.)

Dimensions 26h (shade dimensions 19w 10d 10h)



From the Country Estate Collection

Saddle Ottoman Duo

Sold in a set of two, the Saddle Ottoman Duo boasts timeless leather and nailhead trim.

Dimension Each: 19w 19d 19h



From the Country Estate Collection

Turf Table Lamp

Sleek textured column meets a metallic golden bronze base and cap. Hardback drum shade in an off-white linen fabric. Uses 150w, 3-way bulb (or LED equivalent.)

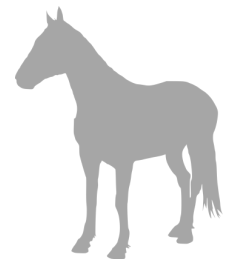
Dimensions 32h (shade dimensions 17dia 11h)

From the Country Estate Collection

The Reins Lamp

Hand-twisted steel, finished in an oil rubbed golden bronze. The Reins Lamp features a tapered round hardback shade in light beige linen fabric. Uses 150w, 3-way bulb (or LED equivalent.)

Dimensions 27h (shade dimensions 16dia 10h)



From the Country Estate Collection

Warm Valley Framed Prints

Sold in set of 2

Our Warm Valley framed prints depict a lush valley in rich shades of green and warm neutrals. Natural oak veneer frame with matching fillets. Framed with a slightly off-white linen mat under protective glass. Artwork by Ethan Harper.

Dimensions 37w 2d 29h



From the Country Estate Collection

Derby Accent Mirrors

Sold in set of 2. Heavily distressed, slate blue frame with aged ivory accents and antiqued mirrors.

Dimensions 19w 1d 19h each mirror

From the Country Estate Collection

Hawthorne Accent Mirror

Geometric, layered metal frame enhanced by a heavily distressed dark blackish bronze finish with gold undertones. May be hung horizontal or vertical.

Dimensions 45w 1d 30h

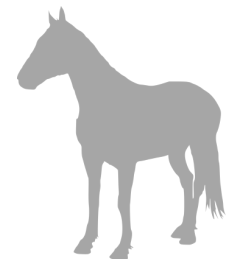


From the Country Estate Collection

Hawthorne Accent Chest

Pairs with Hawthorne Mirror, the Hawthorne Accent Chest is great alone or side by side with a second Hawthorne Chest. Each cabinet boasts 2 doors with brushed brass hardware and fixed shelf. Ebony stain.

Dimensions 43w 16d 31h



From the Country Estate Collection

Round Café Height Table

Crafted to withstand high-use, the Country Estate Café Table is available in both 30" (seats 3) and 36" (seats 4) tops. Powder coat black x-base and column. Nut Brown Cherry luxury laminate top with Artisan finish.

Made in the USA

Dimensions 30/36dia 29h



From the Country Estate Collection

Square Café Height Table

Weighted x-base and column have a black powder coat finish. Beautiful Nut Brown Cherry luxury laminate top with Artisan finish, needs no linens. Available in both 30" (seats 2) and 36" (seats 4) tops.

Made in the USA

Dimensions 30 or 36w 30 or 36d 29h



From the Country Estate Collection

Bozeman Fabric by the Yard

Soft and casually elegant is our Bozeman fabric. A variety of blues embroidered against a natural background. Great for drapery, added pillows or anywhere an accent fabric is needed. Sold by the yard in one yard increments. Just let us know your yardage and we'll get you a quote.



From the Country Estate Collection

Chicory Café Chair

Constructed with durable, functional aluminum with Nu-Grain woodgrain faux finish of Regency Walnut. Upholstered with a delightful small scale woven blue and ivory check.

Made in the USA

Dimensions 18w 24d 37h



From the Country Estate Collection

Bistro Height Table

Adding a little height to a space creates interest. Our Bistro Height Table does just that. Couple with our Chicory Bistro Stool for a complete look. Top is crafted in high-pressure Nut Brown Cherry luxury laminate with Artisan finish (needs no linens.)

Made in the USA

Dimensions 24dia 42h



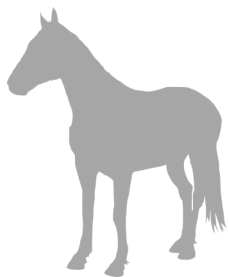
From the Country Estate Collection

Chicory Bistro Stool

Pairs well with our Bistro Table and complements remaining café pieces in the Country Estate Collection. The Chicory Bistro Stool is crafted from an aluminum frame with a distinctive faux woodgrain finish in Regency Walnut making this stool virtually indestructible yet artfully designed.

Made in the USA

Dimensions 17w 22d 43h

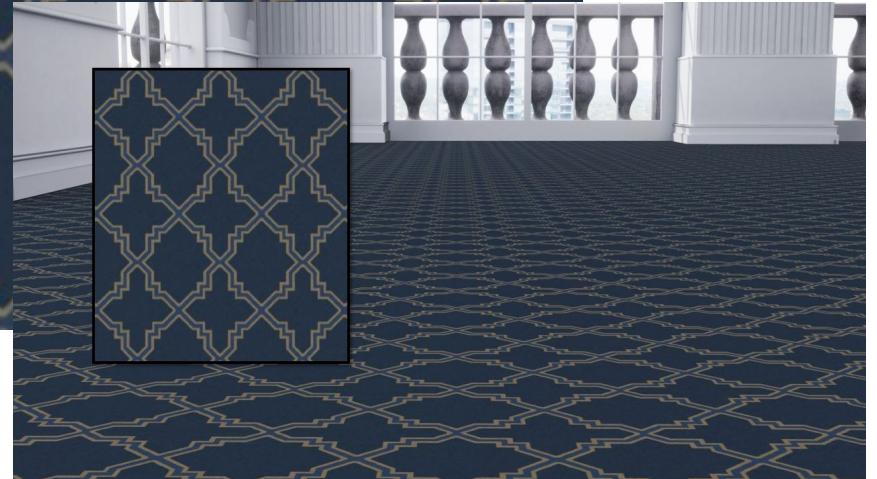
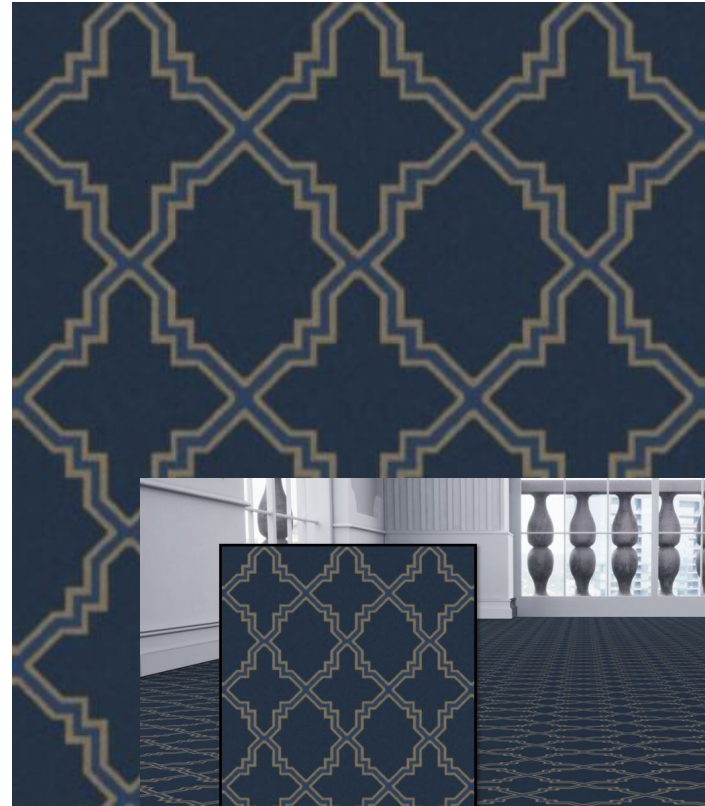


From the Country Estate Collection

Sunday Dinner Broadloom Carpet

Don't hesitate to use pattern carpet. A pattern carpet anchors the space and allows your furnishings to shine. Our Arlington Broadloom carpet has been custom colored to work with the fabrics in the Country Estate Collection. Suitable for direct glue installation (recommended), with or without pad. 140sy minimum for best pricing. Just let us know your quantity.

Made in the USA



From the Country Estate Collection

Tack Room Luxury Vinyl Tile

Beautifully crafted textured luxury vinyl tile (LVT). The Tack Room LVT is fabricated for heavy commercial use. Comes in 9" x 60" planks and is sold by the box. Each box contains 22.4sf. Suitable for direct glue installation.

Just let us know your quantity...

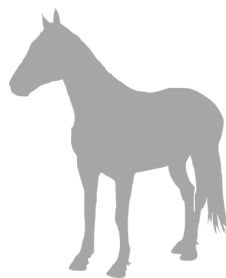


From the Country Estate Collection

English Ivy Silk Planter

Full, luscious and suitable for any table or console top. Potted in brushed bronze/wood-tone container and ready to take out of the box and place.

Dimensions 24w 15h



From the Country Estate Collection

Hacienda Palm

Your Hacienda Palm will be potted in a Havana Brown cubico leather container, and makes a vertical statement for any Lobby or Chapel.

Dimensions 7'-0" (approx)



From the Country Estate Collection

Hitched Wall Coverings

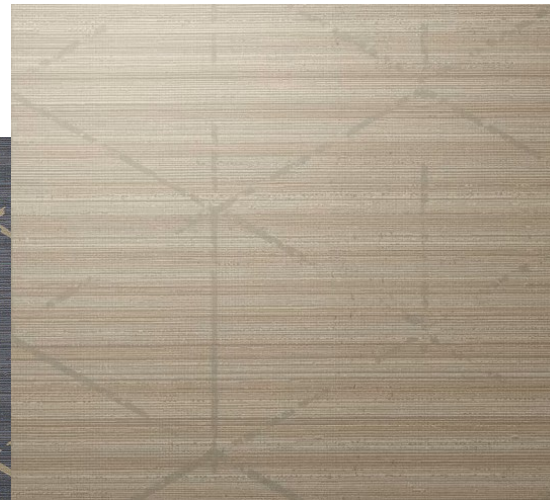
Using an environmentally friendly 10% recycled content, our Hitched Wall Coverings come in both a deep distressed blue (Navy) and in a warm beige (Beige Balanca). 52" bolt width and sold by the yard. Let us know your yardage and we'll provide a quote.



Navy



Beige Balanca



From the Country Estate Collection

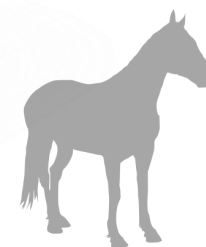
Lexington Casket Bier

Chapel furniture that has a current look.

Our Lexington Casket Bier is engineered to meet the needs for both standard and oversize caskets. Choose either durable textured wood grain Nut Brown Cherry luxury aminate or beautiful wood veneer construction. Partially hidden industrial 365-degree casters. Cross installed on one side.

Made in the USA

Dimensions 62.5w 24d 21-3/8h





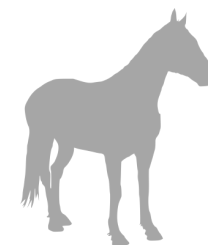
From the Country Estate Collection

Lexington Flower Pedestal

Sold in sets of 2, engineered with weighted bases to allow for easy placement and resistance to tipping. Crafted in Nut Brown Cherry luxury laminate to complement other Country Estate chapel equipment, these pedestals are water resistant. Available in 24", 30" and 36" heights.

Made in the USA

Dimensions 16w 16d 24/30/36h



From the Country Estate Collection

Lexington Urn Table (with separate urn stand) *and Baby Bier*

Take a look at our Lexington Chapel Equipment.

Our Lexington Baby bier and Urn Table is engineered to meet the needs for today's families. We've added a 5-sided Urn Stand to enhance your cremation presentations. The Urn Stand is 100% portable. Can be placed in the center, off to the side or not used at all. The Lexington Baby Bier and Urn Table with Stand come in either durable wood grain Nut Brown luxury laminate or beautiful wood veneer construction. Partially hidden industrial 365-degree casters. Cross installed on one side.



Made in the USA

Baby Bier & Urn Table Dimensions 48w 30d 30h

Urn Stand Dimensions 20w 20d 10h





From the Country Estate Collection

Lexington Crucifix with Stand

Chapel furniture that has a current look.

Our Lexington Casket Crucifix with Stand is a necessary addition to the Lexington products. It features either a Nut Brown luxury laminate or wood construction with resin corpus and INRI applique.

Made in the USA

Dimensions 12w 12d 89h

From the Country Estate Collection

Lexington Vigil Candle Stand

Sold as a pair.

The Lexington Vigil Candle Stands can be purchased in either Nut Brown woodgrain luxury laminate or in wood veneer construction. The stands come with an 8.5" h glass red shade and are ready for your votive candle and holder to be placed inside our red shade.

Made in the USA

Dimensions 10w 10d 51h



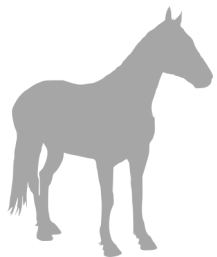
From the Country Estate Collection

Lexington Lectern

Your choice in either Nut Brown Cherry luxury laminate finish or wood veneer. Both options offer a sturdy 4-caster base. The Lexington Lectern comes with a black gooseneck battery powered LED lighting. Slanted top with pencil-stop and open shelf underneath.

Made in the USA

Dimensions 24w 20d 42h



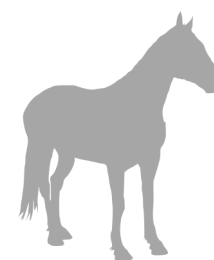
From the Country Estate Collection

Lexington Prayer Kneeler

Stabil and constructed with high density foam for knees and elbows, crafted with Nut Brown Cherry artisan finish luxury laminate or wood veneer construction. Comes with cross applique. Upholstered in navy and cream woven fabric.

Made in the USA

Dimensions 44w 24d 32.5h



Freight & Delivery

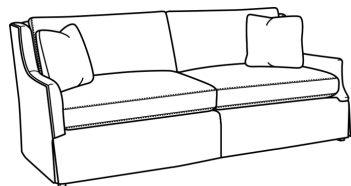
Product shown may come from a variety of sources. Freight costs may be shown on your quote. Each item is carefully inspected prior to leaving the manufacturer and, where practical, again prior to delivery. However, should an item arrive with damage or defect, furnitureforfuneralhomes.com or our respective umbrella company, FFH LLC, reserve the right to either repair or replace damaged or defective merchandise according to the manufacturer warranty. Both furnitureforfuneralhomes.com and FFH LLC shall be held harmless of any damage or defect in merchandise.

In the event of damage or defect in merchandise, proper authorization must be garnered prior to repair or replacement of item (s). Visible damage must be immediately noted on the carrier's receipt / bill of lading / shipping paperwork. All claims must be submitted with furnitureforfuneralhomes.com, accompanied by an electronic photo of the damage/defect. Please submit all claim inquiries to info@ffhdesign.com.

Larger items such as upholstered furniture or larger wood pieces, will ship with white glove delivery. Our local delivery agent will phone you for a convenient day/time to deliver your items and set them in place.

Pricing & Availability

Formal quotes are honored for 15 days and include cost of items, sales tax and freight estimates (where possible) for white glove delivery. Many of our furnishings are custom upholstered or custom colored and those items are available for immediate production. As many of our items are semi or fully custom, availability of fabrics and frames may change. We reserve the right to substitute fabrics or frames with similar quality and design aesthetic as needed. Please note that an estimated production time for custom items may be shown on your quote. Sales tax is applied when the order is placed. Orders will be processed upon receipt of approval and payment.



furnitureforfuneralhomes.com

Image Clarity

While all care has been taken to provide accurate color of fabrics and finishes, please note that image color may vary depending on your electronic monitor / device.

Sales and/or Use Tax

This varies by State. Any appropriate sales tax will be shown in the quote. If sales tax is not shown in the quote, it is the responsibility of the end-user to pay use tax on that purchase.

Warranties

As many items shown in our collections are semi-custom and custom items, crafted exclusively for the funeral home owner, merchandise is non-refundable and non-returnable except in matters of damage or defect. Both furnitureforfuneralhomes.com and FFH LLC reserve the right to repair or replace merchandise with damage or defect according to manufacturer warranty.

We've cultivated product from a variety of manufacturers and each manufacturer provides differing warranties for their products.

General upholstery warranties may include the following:

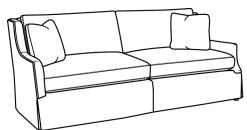
Frames are warrantied for commercial use for up to 10 years

Springs are warrantied for commercial use for up to 10 years

Accent chair frames are warrantied for 6 years

Cushions are warrantied for 2 years

furnitureforfuneralhomes.com is a division of **FFH design**, offering custom full-service design to the funeral industry nationwide. For more information please email info@ffhdesign.com or call



furnitureforfuneralhomes.com

262.806.7143

S98 W12712 Loomis Drive

Muskego, WI 53150

furnitureforfuneralhomes.com

ffhdesign.com

info@ffhdesign.com