



## *Country Estate Collection*

PROFESSIONALLY DESIGNED COLLECTIONS OF FURNISHINGS  
FOR THE FUNERAL INDUSTRY



[furnitureforfuneralhomes.com](http://furnitureforfuneralhomes.com)

[furnitureforfuneralhomes.com](http://furnitureforfuneralhomes.com)

[info@ffhdesign.com](mailto:info@ffhdesign.com)

262.806.7143

## Welcome to [furnitureforfuneralhomes.com](http://furnitureforfuneralhomes.com)

We've spent nearly 20 years serving the funeral industry nationwide with professional, fully-custom interior design. In that time we've had the privilege of serving well over a hundred funeral homes from various geographic areas, different cultures and with different economic abilities. And while we love providing owners with full-service interior design, from front of the house to back of the house - from floors to ceilings, we also want to serve the broader community of funeral homes, by offering professionally designed, entire rooms full of furniture, *without actually having to hire a designer*. We've used our expertise to pull together furniture collections where you, the owner, can browse for the pieces you need to complete your space. Create an entire room or entire facility with furnishings at the right price - already designed - and available to order. We've combed through hundreds of furniture and furnishings items to professionally curate our collections. From carpet and LVT to furniture and fabrics for your window treatments, each piece within a collection is meant to work seamlessly with another. No guesswork. Just find a collection that best suites your brand and tastes, choose the items that work for you, complete the request for quote form and we'll provide a quote. It's that easy. Our collections are shown both in print and for download online at [furnitureforfuneralhomes.com](http://furnitureforfuneralhomes.com). And for further help, we've added paint color selections and other design advice on our website.

All products shown have been carefully selected for the funeral industry. Arm height and seat height are appropriate for all age groups. Seat cushions are crafted with commercially viable materials that will hold-up over time. Furniture finishes are done with a several step process ensuring many years of enjoyment. And all furnishings come with their own manufacturer warranty. That's peace of mind.

We want to make the buying decision easy, but it doesn't stop there. Shipment of items will either come UPS, FedEx or Common Carrier. For common carrier items, we'll arrange white glove delivery so you can expect items to be delivered inside your funeral home and placed according to your requirements.

Thank you for interest and happy browsing!

*Tam Schreiner*

Owner & Managing Director



[furnitureforfuneralhomes.com](http://furnitureforfuneralhomes.com)

[info@ffhdesign.com](mailto:info@ffhdesign.com)

262.806.7143

From the Country Estate Collection

## Camden Sofa

Pleated, rolled arms coupled with a waterfall skirt, gives the Camden Sofa a relaxed sophisticated look. Upholstered in a luscious yet durable distressed velvet.

Made in the USA

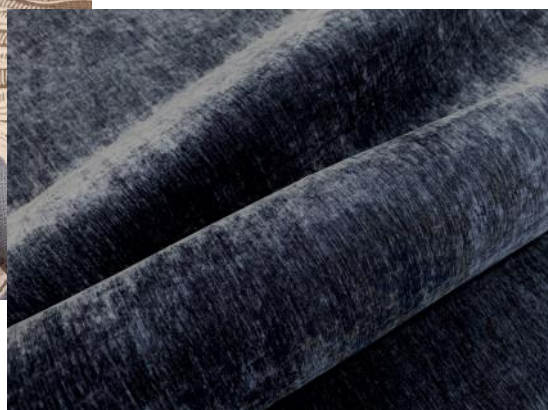
Dimensions 79w 36d 34h

Item C-301



pillow fabric

upholstery fabric



## Camden Loveseat

Made in the USA

Dimensions 55w 36d 34h

Item C-302





From the Country Estate Collection

## Ashland Accent Chair

Lattice back detail with upholstered seat and back. We used a paisley fabric rich in blues, cream and bronze tones. Timeless.

Made in the USA

Dimensions 24.5w 27d 40h

Item C-303



## Monroe End Table

Warm, chestnut distressed Heirloom finish using Birch solids and veneers.  
Operable drawer with antique brass pull.

Dimensions 26w 26d 25h

Item C-304



From the Country Estate Collection

## *Monroe Round Lamp Table*

Warm, chestnut distressed finish over Alder veneers and solid hardwoods.

Dimensions 24dia 25h

Item C-305





From the Country Estate Collection

## *Jackson Display Console*

Solid hardwoods and veneers, the Jackson Display Console includes 6 doors with seeded glass, 2 adjustable wood shelves behind each door and 3 drawers on top.

Dimensions 66w 19d 42h

Item C-306



From the Country Estate Collection

## *Monroe Console Table*

Warm chestnut distressed finish. At 14" deep, it's the perfect console for a hall or any other space.

Dimensions 64w 14d 35h

Item C-307



From the Country Estate Collection

## *Morgan Occasional Chair*

Upholstered with colonial linen floral on in/out backs and aged warm chocolate faux leather on seats.

Made in the USA

Dimensions 23w 23d 38.5h

Item C-308



From the Country Estate Collection

## *Angusta Bariatric Chair*

Criss-cross quilted faux leather upholstery. Rated to 500lbs.

Made in the USA

Dimensions 34w 25d 35h

Item C-309



From the Country Estate Collection

## *Laurel Chapel Chair*

Stacking 10 high, the Laurel Chapel Chair is easy for families to sit for awhile, easy for owners to reposition, easy to store. Upholstered in a linen-tone commercial fabric with walnut colored powder coat frame. Quantity discounts may apply.

Made in the USA

Dimensions 18w 23d 36h

Item C-310



From the Country Estate Collection

## *Laurel Hand Truck*

The 5-wheel hand truck is specifically manufactured for our stacking chapel chairs. Easy stack up to 10 chairs—easy to move within the facility. Fits through standard doorway.

Dimensions 20w 46d

Item C-311





From the Country Estate Collection

## Penman Accent Chair

Graceful oval back is accented with a colonnade of shaped slats above the upholstered seat. Seat upholstered in geometric design of beautiful blue and off-white. Distressed driftwood frame.

Dimensions 22w 23d 38h

Item C-314



From the Country Estate Collection

## Hemingway Chair

Combining old world distressed wood tones with vintage leather upholstery. Antique brass nail head trim detail.

Dimensions 22w 24d 37h

Item C-313

From the Country Estate Collection

## Twine Table Lamp

This lamp features a heavily antiqued gold finish with hand bound twine carving. Dark bronze accents and black marble foot.

Dimensions 26h (shade dimensions 19w 10d 10h)

Item C-316



From the Country Estate Collection

## Saddle Ottoman

Tufting detail, Heirloom finish tapered legs and antique drawer pulls are all hallmarks of the Saddle Ottoman. Upholstered in soft brown faux leather vinyl.

Dimensions 42dia 20.5h

Item C-315



From the Country Estate Collection

## *Turf Table Lamp*

Sleek textured column meets a metallic golden bronze base and cap. Hardback drum shade in an off-white linen fabric.

Dimensions 32h (shade dimensions 17dia 11h)

Item C-317



From the Country Estate Collection

## *The Reins Lamp*

Hand-twisted steel, finished in an oil rubbed golden bronze. The Reins Lamp features a tapered round hardback shade in light beige linen fabric.

Dimensions 27h (shade dimensions 16dia 10h)

Item C-318



From the Country Estate Collection

## *Monroe Mirror*

Alluring hunt country vibe, the Monroe Mirror complements the finish in our Monroe End Table and Monroe Round Lamp Table. May be hung horizontal or vertical using anchors.

Dimensions 48.25w 2.5d 38.25h (when hung horizontally)

Item C-319



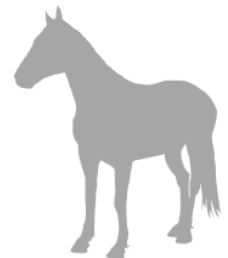
From the Country Estate Collection

## *Derby Accent Mirrors*

Sold in sets of 2. Heavily distressed, slate blue frame with aged ivory accents and antiqued mirrors.

Dimensions 19w 1d 19h

Item C-320



From the Country Estate Collection

## *Round Café Height Table*

Crafted to withstand high-use, the Country Estate Café Table is available in both 30" (seats 3) and 36" (seats 4) tops. Powder coat black column and x-base.

Made in the USA

Dimensions 30/36dia 29h

Items C-321 (30" round) and C-323 (36" round)



From the Country Estate Collection

## *Square Café Height Table*

Weighted x-base and column have a black powder coat finish. Beautiful laminate needs no linens. Available in both 30" (seats 2) and 36" (seats 4) tops.

Made in the USA

Dimensions 30/36w 30/36d 29h

Items C-322 (30" square) and C-324 (36" square)



From the Country Estate Collection

## Bistro Height Table

Adding a little height to a space creates interest. Our Bistro Height Table does just that. Couple with our Chicory Bistro Stool for a complete look. Top is crafted in high-pressure textured laminate (needs no linens.)

Made in the USA

Dimensions 24dia 42h

Item C-325



From the Country Estate Collection

## Chicory Café Chair

Constructed with European Beech hardwoods and upholstered with a delightful small scale woven blue and ivory check. Finished in Warm Columbian Walnut stain color.

Made in the USA

Dimensions 18w 21d 34h

Item C-326







From the Country Estate Collection

## Chicory Bistro Stool

Pairs well with our Bistro Table and complements remaining café pieces in the Country Estate Collection.

Made in the USA

Dimensions 18w 21d 43h

Item C-327

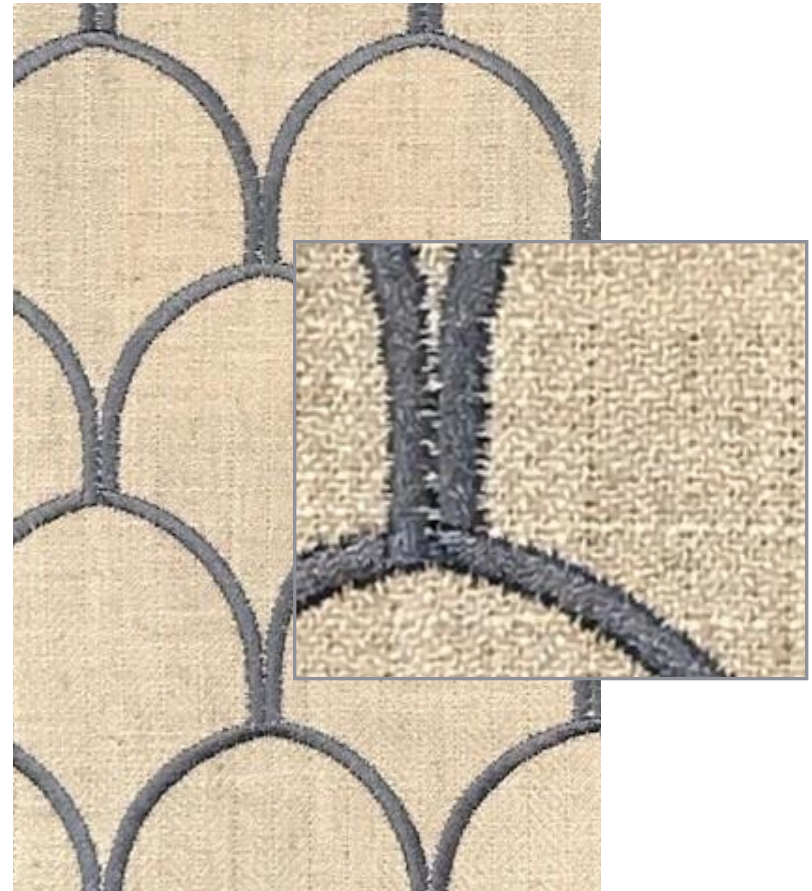
From the Country Estate Collection

## Bozeman Fabric by the Yard

Soft and casually elegant is our Bozeman fabric. A variety of blues embroidered against a natural background. Great for drapery, added pillows or anywhere an accent fabric is needed.

Sold by the yard in one yard increments.

Item C-334



From the Country Estate Collection

## Arlington Broadloom Carpet

Don't hesitate to use pattern carpet. A pattern carpet anchors the space and allows your furnishings to shine. Our Arlington Broadloom carpet has been custom colored to work with the fabrics in the Country Estate Collection. Suitable for direct glue installation (recommended), with or without pad. 140sy minimum for best pricing. Just let us know your quantity.

Made in the USA

Item C-331



From the Country Estate Collection

## Tack Room Luxury Vinyl Tile

Beautifully crafted textured luxury vinyl tile (LVT). The Tack Room LVT is fabricated for heavy commercial use. Comes in 9" x 60" planks and is sold by the box. Each box contains 22.4sf. Suitable for direct glue installation.

Just let us know your quantity...

Item C-333





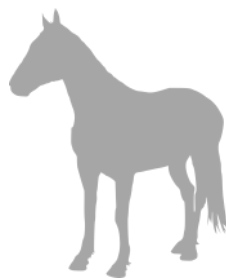
From the Country Estate Collection

## English Ivy Silk Planter

Full, luscious and suitable for any table or console top. Potted in brushed bronze/wood-tone container and ready to take out of the box and place.

Dimensions 24w 15h

Item C-328a



From the Country Estate Collection

## Hacienda Palm

Your Hacienda Palm will be potted in a Havana Brown cubico leather container, and makes a vertical statement for any Lobby or Chapel.

Dimensions 7'-0" (approx)

Item C-328d





From the Country Estate Collection

## *Hitched Wall Coverings*

Using an environmentally friendly 10% recycled content, our Hitched Wall Coverings come in both a deep distressed blue (Navy) and in a warm beige (Beige Balanca). 52" bolt width and sold by the yard.

Items C-335 (Navy) and C-336 (Beige Balanca)



Navy



Beige Balanca



From the Country Estate Collection

## *Lexington Casket Bier*

Finished in either a rich artisan Nut Brown Cherry laminate or with wood veneers and finished in Nut Brown Cherry stain. Either way, the Lexington Casket Bier is engineered to meet the needs for both standard and oversize caskets. Our bier includes hidden industrial 365-degree casters. Cross installed on one side.

Made in the USA

Dimensions 62.5w 24d 21-3/8h

Item C-337L (laminate) or C-337V (wood veneer)

Also available

*Lexington Casket Surround*

*Lexington Cross on a Stand*





From the Country Estate Collection

## *Lexington Baby Bier & Urn Table*

Four bumper feet for stability, the Lexington Baby Bier also serves as an Urn Table. Ample horizontal surface and crafted with either durable Nut Brown Cherry laminate or wood veneer with Nut Brown stain finish. Cross installed on one side.

Made in the USA

Dimensions 48w 30d 38.25h

Items C-339L (laminate) or C-339V (wood veneer)



From the Country Estate Collection

## *Lexington Flower Pedestal*

Sold in sets of 2, engineered with weighted bases to allow for easy placement and resistance to tipping. Crafted in Nut Brown Cherry laminate to complement other Country Estate chapel equipment, these pedestals are water resistant. Available in both 30" and 36" heights.

Made in the USA

Dimensions 16w 16d 30/36h

Items C-340 (30" pedestal) and C-341 (36" pedestal)



From the Country Estate Collection

## *Lexington Lectern*

Your choice in either Nut Brown Cherry laminate finish or wood veneer and stained in Nut Brown finish. Both options with sturdy 4-caster base. Comes with black gooseneck battery powered LED lighting. Slanted top with pencil-stop and open shelf underneath.

Made in the USA

Dimensions 24w 20d 45h

Items C-342L (laminate) or C-342V (wood veneer)



From the Country Estate Collection

## *Lexington Prayer Kneeler*

Stabil and constructed with high density foam for knees and elbows, crafted with Nut Brown Cherry artisan finish laminate or wood veneer construction with Nut Brown Cherry artisan stain finish. Comes with cross applique.

Made in the USA

Dimensions 44w 18d 32.5h

Items C-343L (laminate) or C-343V (wood veneer)



## Freight & Delivery

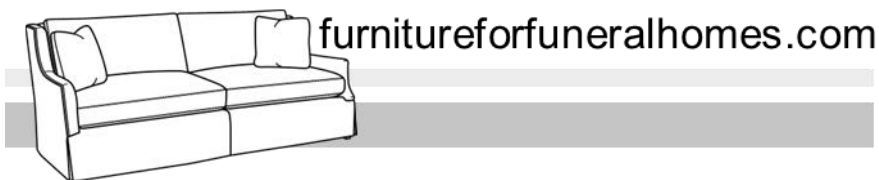
Product shown may come from a variety of sources. Freight costs may be shown on your quote. Each item is carefully inspected prior to leaving the manufacturer and, where practical, again prior to delivery. However, should an item arrive with damage or defect, [furnitureforfuneralhomes.com](http://furnitureforfuneralhomes.com) or our respective umbrella company, FFH LLC, reserve the right to either repair or replace damaged or defective merchandise according to the manufacturer warranty. Both [furnitureforfuneralhomes.com](http://furnitureforfuneralhomes.com) and FFH LLC shall be held harmless of any damage or defect in merchandise.

In the event of damage or defect in merchandise, proper authorization must be garnered prior to repair or replacement of item (s). Visible damage must be immediately noted on the carrier's receipt / bill of lading / shipping paperwork. All claims must be submitted with [furnitureforfuneralhomes.com](http://furnitureforfuneralhomes.com), accompanied by an electronic photo of the damage/defect. Please submit all claim inquiries to [info@ffhdesign.com](mailto:info@ffhdesign.com).

Larger items such as upholstered furniture or larger wood pieces, will ship with white glove delivery. Our local delivery agent will phone you for a convenient day/time to deliver your items and set them in place.

## Pricing & Availability

Formal quotes are honored for 15 days and include cost of items, sales tax and freight estimates (where possible) for white glove delivery. Many of our furnishings are custom upholstered or custom colored and those items are available for immediate production. As many of our items are semi or fully custom, availability of fabrics and frames may change. We reserve the right to substitute fabrics or frames with similar quality and design aesthetic as needed. Please note that an estimated production time for custom items may be shown on your quote. Sales tax is applied when the order is placed. Orders will be processed upon receipt of approval and payment.



## Image Clarity

While all care has been taken to provide accurate color of fabrics and finishes, please note that image color may vary depending on your electronic monitor / device.

## Warranties

As many items shown in our collections are semi-custom and custom items, crafted exclusively for the funeral home owner, merchandise is non-refundable and non-returnable except in matters of damage or defect. Both [furnitureforfuneralhomes.com](http://furnitureforfuneralhomes.com) and FFH LLC reserve the right to repair or replace merchandise with damage or defect according to manufacturer warranty.

We've cultivated product from a variety of manufacturers and each manufacturer provides differing warranties for their products.

General upholstery warranties may include the following:

Frames are warrantied for commercial use for up to 10 years  
Springs are warrantied for commercial use for up to 10 years  
Accent chair frames are warrantied for 6 years  
Cushions are warrantied for 2 years

Note that some fabric stretching is normal and is not covered under warranty.

[furnitureforfuneralhomes.com](http://furnitureforfuneralhomes.com) is a division of **FFH design**, offering custom full-service design to the funeral industry nationwide. For more information please email [info@ffhdesign.com](mailto:info@ffhdesign.com) or call 262.806.7143. We'd be glad to assist.





[furnitureforfuneralhomes.com](http://furnitureforfuneralhomes.com)

262.806.7143  
S98 W12712 Loomis Drive  
Muskego, WI 53150

[furnitureforfuneralhomes.com](http://furnitureforfuneralhomes.com)  
[ffhdesign.com](http://ffhdesign.com)  
[info@ffhdesign.com](mailto:info@ffhdesign.com)