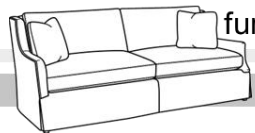




*Farmhouse Redux
Collection*

PROFESSIONALLY DESIGNED COLLECTIONS OF FURNISHINGS
FOR THE FUNERAL INDUSTRY



furnitureforfuneralhomes.com

furnitureforfuneralhomes.com

info@ffhdesign.com

262.806.7143

Welcome to furnitureforfuneralhomes.com

We've spent nearly 20 years serving the funeral industry nationwide with professional, fully-custom interior design. In that time we've had the privilege of serving well over a hundred funeral homes from various geographic areas, different cultures and with different economic abilities. And while we love providing owners with full-service interior design, from front of the house to back of the house - from floors to ceilings, we also want to serve the broader community of funeral homes, by offering professionally designed, entire rooms full of furniture, *without actually having to hire a designer*. We've used our expertise to pull together furniture collections where you, the owner, can browse for the pieces you need to complete your space. Create an entire room or entire facility with furnishings at the right price - already designed - and available to order. We've combed through hundreds of furniture and furnishings items to professionally curate our collections. From carpet and LVT to furniture and fabrics for your window treatments, each piece within a collection is meant to work seamlessly with another. No guesswork. Just find a collection that best suites your brand and tastes, choose the items that work for you, complete the request for quote form and we'll provide a quote. It's that easy. Our collections are shown both in print and for download online at furnitureforfuneralhomes.com. And for further help, we've added paint color selections and other design advice on our website.

All products shown have been carefully selected for the funeral industry. Arm height and seat height are appropriate for all age groups. Seat cushions are crafted with commercially viable materials that will hold-up over time. Furniture finishes are done with a several step process ensuring many years of enjoyment. And all furnishings come with their own manufacturer warranty. That's peace of mind.

We want to make the buying decision easy, but it doesn't stop there. Shipment of items will either come UPS, FedEx or Common Carrier. For common carrier items, we'll arrange white glove delivery so you can expect items to be delivered inside your funeral home and placed according to your requirements.

Thank you for interest and happy browsing!

Tam Schreiner

Owner & Managing Director



info@ffhdesign.com | (262) 806-7143

From the Farmhouse Redux Collection

Charlotte Sofa

Casual and elegant, the Charlotte Sofa is a 3-cushion comfortable upholstery addition to your funeral home. Comes with two contrasting fabric pillows.

Dimensions 83w 34d 35h

Made in the USA

Item F-201



From the Farmhouse Redux Collection

Charlotte Loveseat

As with the Charlotte Sofa, the Charlotte Loveseat uses a high-density, commercially viable cushion. Accent pillows use hypoallergenic synthetic down fill.

Dimensions 59w 34d 35h

Made in the USA

Item F-202



From the Farmhouse Redux Collection

Georgie Chair

Delightfully versatile, the Georgie Chair pairs well with our Charlotte Sofa or Loveseat. Not too large, not too small, this chair is comfortable for an entire visitation. Back fabric brings warmth to the space and the seat is upholstered in textured vinyl for added cleanability. Chair frame in mahogany black finish.

Dimensions 24w 24d 39h

Made in the USA

Item F-203



From the Farmhouse Redux Collection

Olde Oak Round End Table

A one-of-a-kind design, the Olde Oak table is a combination of concrete and craftsmanship. The base speaks of an aged oak wood grain and the top is concrete in a Bone finish.

Dimensions 25.5dia 24h

Item F-207





From the Farmhouse Redux Collection

Driftwood Round End Table

Lovely, wired-brushed driftwood finish crafted from quartered yellow pine veneers.

Dimensions 28dia 27.5h

Item F-204

From the Farmhouse Redux Collection

Driftwood Side Table

Wire-brushed driftwood finish. Lower display shelf, operable drawer .

Dimensions 26w 28d 27h

Item F-205



From the Farmhouse Redux Collection

Gracie Arm Chair

Great choice for family seating or any other location in your facility. Comfortable frame dimensions and upholstered in a soft, durable check fabric of charcoals and neutrals.

Made in the USA

Dimensions 24.5w 24d 33.5h

Item F-209



From the Farmhouse Redux Collection

Metalworks Round Accent Table

Features a metal base finished in black with a round White Oak top.

Dimensions 26dia 24h

Item F-206



From the Farmhouse Redux Collection

Pappy Bariatric Chair

Upholstered in a charcoal and neutral stripe fabric pattern. Perfect to intersperse among your chapel chairs. Finished in a rich, warm Montana Walnut stain. Rated up to 500lbs.

Dimensions 34w 25d 35h

Made in the USA

Item F-210



From the Farmhouse Redux Collection

Lawrence Lounge Chair

Upholstered in a lovely Robin's Egg Blue and accented with a black and cream check pillow. Frame finished in a rich, warm Montana Walnut stain.

Dimensions 32.5w 36d 40h

Made in the USA

Item F-211

From the Farmhouse Redux Collection

Gooseberry Bench

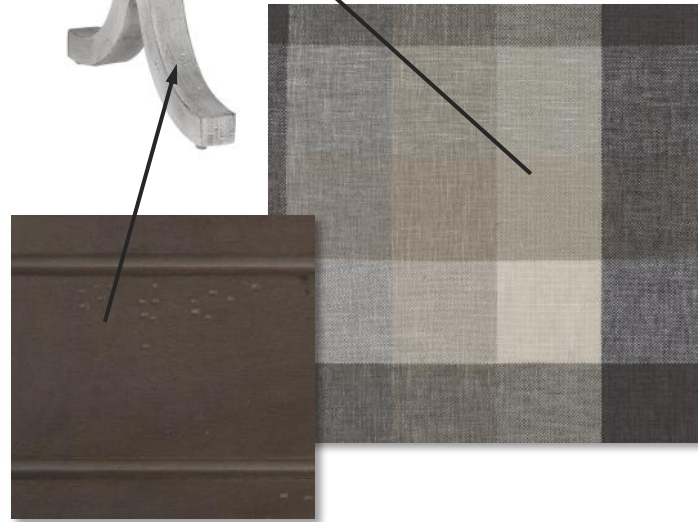


Rustic Flint wood finish. Upholstered in a warm charcoal and neutral check pattern. Perfect for a farmhouse interior.

Dimensions 30w 16d 19h

Made in the USA

Item F-212



From the Farmhouse Redux Collection

Bessie Ottomans (set of 2)

Extra seating or accent in front of the Charlotte Sofa or Loveseat, the Bessie Ottomans work! Textured vinyl upholstery.

Dimensions 18w 18d 18h (each)

Made in the USA

Item F-213



From the Farmhouse Redux Collection

Mallard Chapel Chair

Upholstered in "i-clean" fabric. Highly durable and highly cleanable. Warm blend of dark mushroomy chocolate and charcoal threads. Paired with a bronze powder coat frame. Chair stacks 10 high.

Dimensions 18w 23d 36.5h

Made in the USA

Item F-214



From the Farmhouse Redux Collection

Mallard Hand Truck

The 5-wheel hand truck is specifically manufactured for our stacking chapel chairs. Easy stack—easy move within the facility. Fits through standard doorway.

Dimensions 20w 46d

Item F-215



From the Farmhouse Redux Collection

Sammy Lamp

Showcasing a rustic, casual look, the Sammy Lamp has a ceramic, crackle finish base and off-white hardback shade.

Lamp Dimension 27h | Shade 15dia 10h

Item F-216

From the Farmhouse Redux Collection

Oma Lamp

Finished in a charcoal glaze with etched texture, the Oma Lamp adds a casual, organic feel to the space. Suitable for a console or taller wood piece. Brushed nickel hardware.

Lamp Dimension 22h | Shade 16dia 10h

Item F-217





From the Farmhouse Redux Collection

Creekside Lamp

Glass table lamp which features a timeless shape finished in a distressed white with a myriad of black and gray flecks. White hardback drum shade.

Lamp Dimension 26h | Shade 16dia 10h

Item F-218

From the Farmhouse Redux Collection

Tractor Wheel Table Clock

Features a wood grain texture center column with a weathered stainless frame. Accented with brushed nickel detailing. Quartz movement ensures accurate timekeeping. Requires one "AA" battery, not included.

Dimensions 15w 3d 20h

Item F-249



From the Farmhouse Redux Collection

Driftwood Round Mirror

Farmhouse design at its finest. 44 inches of graceful and polished driftwood frame surrounds a handsome beveled mirror. Hang with anchors.

Dimensions 44dia 1d

Item F-219



From the Farmhouse Redux Collection

Driftwood Mirror

Complementing polished driftwood frame surrounding beveled mirror. Hang with anchors.

Dimensions 54w 1d 40h

Item F-220



From the Farmhouse Redux Collection

Driftwood Registry Console

Great for the registry book, as an accent piece or to use as horizontal surface for tribute items. Three drawers with aged pewter hardware.

Dimensions 72w 18d 38h

Item F-226



From the Farmhouse Redux Collection

Harlequin Chest

A stunning storage chest for any funeral home interior. The Harlequin Chest complements all items in our Farmhouse Collection and may be used as a registry console or easy to place, display piece.

Dimensions 39w 20d 36h

Item F-229



From the Farmhouse Redux Collection

Robin's Lamp Table

Features three European farmhouse carved posts and one fixed shelf in a happy Robin's Egg Blue distressed finish. Birch solids and veneers.

Dimensions 26dia 26h

Item F-229



From the Farmhouse Redux Collection



Round Café Height Table

Crafted to withstand a large amount of hospitality traffic, the Farmhouse Redux Round Café Table boasts a Riftwood charcoal textured wood grain laminate top over a powder coat column and x-base. Available in both 30" (seats 3) and 36" (seats 4) sizes

Made in the USA | Dimensions 30/36dia 29h

Items F-221 (30" round) and F-223 (36" round)



Bistro Height Table

With Riftwood laminate top, our Bistro Table works with other café tables in our Farmhouse Redux Collection.

Made in the USA | Dimensions 24dia 42h

Item F-225

Square Café Height Table

The same durability and design sensibility as is in our round tables, the Square Café Height Table comes in both 30" (seats 2) and 36" (seats 4) sizes.

Made in the USA | Dimensions: 30/36w 30/36d 29h

Items F-222 (30" square) and F-224 (36" square)





From the Farmhouse Redux Collection

Blacksmith Café Chair

Amazingly easy to clean and easy on the eyes, the Blacksmith Café Chair is crafted with a wood saddle seat and wood back. Non-marring glides are great for any floor.

Made in the USA

Dimensions 18.25w 20.5d 33.5h

Item F-230

Donnelly Fabric by the Yard

Perfect addition to the Farmhouse Redux Collection, the Donnelly fabric is certain to make a statement in either window treatments, pillows or anywhere you may need an accent.

Sold by the yard - 54" width goods.

Item F-238

From the Farmhouse Redux Collection

Blacksmith Bistro Stool

Saddle wood seat and wood back with non-marring glides. Cross bracing for stability in heavy-use areas and a foot rest for protection.

Made in the USA

Dimensions: 18.25w 20.25d 43.25h

Item F-231





From the Farmhouse Redux Collection

Front Porch Broadloom Carpet

Front Porch pattern broadloom carpet is a custom blend of 9 different colors, designed to work with our Farmhouse Redux Collection. Tons of neutrals, grays and charcoals. Available for direct glue (recommended) installation with or without pad. 140sy minimum for best pricing. Just let us know your quantity.

Made in the USA

Item F-234

From the Farmhouse Redux Collection

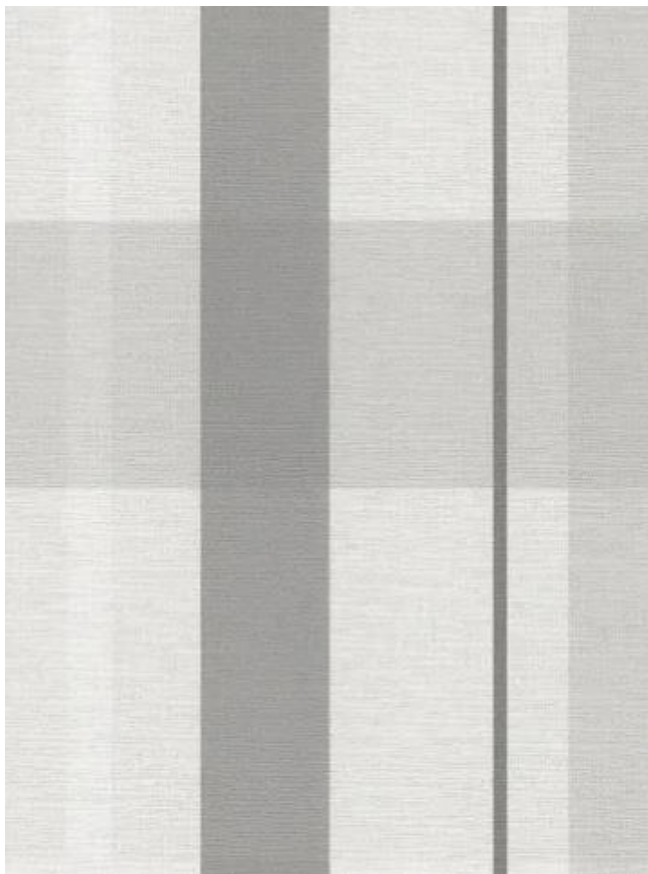
Back Door Luxury Vinyl Tile

Designed for heavy-use traffic, the Back Door LVT has a 22mil wear layer and texture that will fool even the most astute. 9" by 60" planks and sold by the box. Each box contains 22.4sf. Suitable for direct glue installation.

Made in the USA

Item F-237





From the Farmhouse Redux Collection

Salt & Pepper Wall Covering

A new twist on a traditional plaid, the Salt & Pepper Wall Covering is a Type II Vinyl and well-suited for any commercial installation. Light colors of whites and soft grays - perfect for a restroom, pre-need office or hospitality area. 54" width bolts and sold by the yard.

Just let us know your quantity.

Item F-239

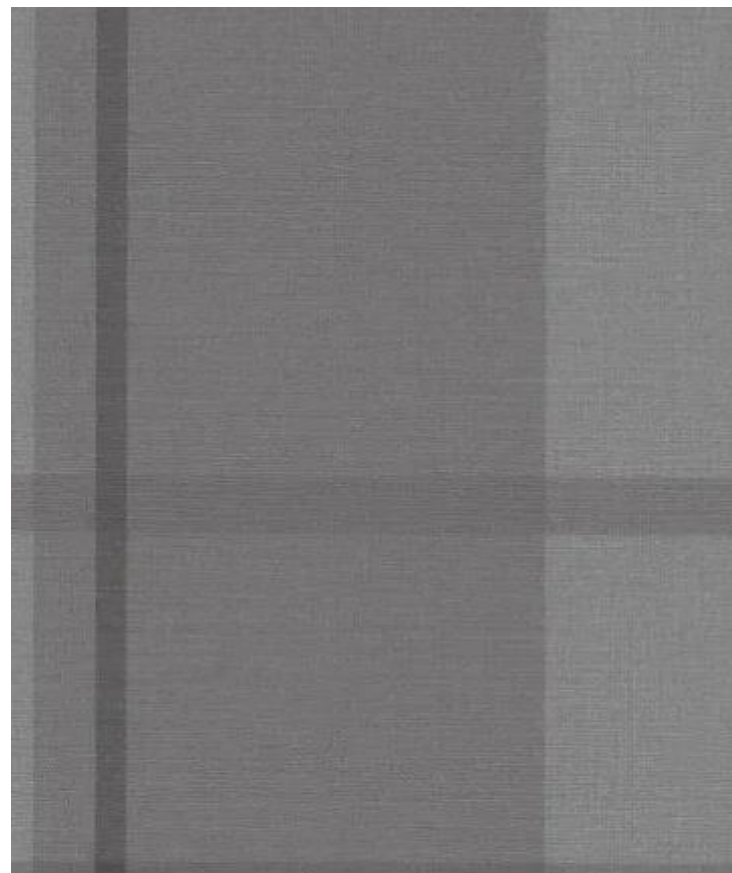
From the Farmhouse Redux Collection

Cracked Pepper Wall Covering

Truly the masculine version of the plaids, our Cracked Pepper Wall Covering takes the traditional plaid and steps it up. Current yet timeless. Try this in a men's restroom or on an accent wall. 54" width bolts and sold by the yard.

Just let us know your quantity.

Item F-240



From the Farmhouse Redux Collection

Benjamin Silk Tree

Natural realism and always lush, this Ficus will be potted in a Satin Black fiberglass cubico container. Quite suited to the Farmhouse Redux Collection.

Dimensions 5'-6" (approx)

Item F-232a



From the Farmhouse Redux Collection

Peace Lily Floor Plant

Fullness and freshness without the maintenance. Potted in a fiberglass 14" x 17" garden glaze container in black.

Dimensions 30-36" in height (approx)

Item F-232b



From the Farmhouse Redux Collection

Opa Floor Plant

Lovely variegated foliage. The Opa Floor Plant requires no maintenance, just open the box, fluff the leaves and you're good to go. Potted in a matte black cubico fiberglass container.

Dimensions 24-30" in height (approx)

Item F-232c



From the Farmhouse Redux Collection

Silver Birch Silk Tree

Certainly a statement piece, this 7' silk silver birch is full and lush. Perfect for adding life to a chapel corner. Potted in a matte black cubico fiberglass container.

Dimensions 7'-0" in height (approx)

Item F-232d

From the Farmhouse Redux Collection

Wexford Casket Bier

Engineered to meet the needs for both standard and oversize caskets, the Wexford Casket Bier is crafted with durable Florence Walnut laminate or solid woods and veneer stained in Florence Walnut finish. Includes hidden industrial 365-degree casters. Cross installed on one side.

Made in the USA

Dimensions 62.5w 24d 21-3/8h

Items F-241L (laminate) or F241V (wood veneer)



From the Farmhouse Redux Collection

Wexford Baby Bier & Urn Table

Four bumper feet for stability, the Wexford Baby Bier also serves as an Urn Table. Ample horizontal surface and crafted with Florence Walnut laminate or solid woods and veneer stained in Florence Walnut finish. Cross installed on one side.

Made in the USA

Dimensions 48w 30d 38.25h

Items F-243L (laminate) or F-243V (wood veneer)



Also available *Wexford Casket Surround* and *Wexford Cross on a Stand*

From the Farmhouse Redux Collection

Wexford Flower Pedestal

sold in sets of 2

Weighted bases allow for easy placement yet resists tipping. Available in both 30" and 36" heights. Water resistant Florence Walnut laminate construction. Made in the USA

Dimensions 16w 16d 30/36h

Items F-244 (30" pedestals) or F-245 (36" pedestals)



From the Farmhouse Redux Collection

Wexford Lectern

Florence Walnut laminate or wood veneer construction (your choice), with sturdy 4-caster base. Black gooseneck battery powered LED lighting. Slanted top with pencil stop and open shelf underneath. Made in the USA

Dimensions 24w 20d 45h

Items F-246L (laminate) or F-246V (wood veneer)



From the Farmhouse Redux Collection

Wexford Prayer Kneeler

Florence Walnut laminate or wood veneer (your choice). High density foam for knees and elbows and upholstered in a woven mix of gray tones. With cross. Made in the USA

Dimensions 44w 18d 32.5h

Items F-247L (laminate) or F-247V (wood veneer)



Freight & Delivery

Product shown may come from a variety of sources. Freight costs may be shown on your quote. Each item is carefully inspected prior to leaving the manufacturer and, where practical, again prior to delivery. However, should an item arrive with damage or defect, furnitureforfuneralhomes.com or our respective umbrella company, FFH LLC, reserve the right to either repair or replace damaged or defective merchandise according to the manufacturer warranty. Both furnitureforfuneralhomes.com and FFH LLC shall be held harmless of any damage or defect in merchandise.

In the event of damage or defect in merchandise, proper authorization must be garnered prior to repair or replacement of item (s). Visible damage must be immediately noted on the carrier's receipt / bill of lading / shipping paperwork. All claims must be submitted with furnitureforfuneralhomes.com, accompanied by an electronic photo of the damage/defect. Please submit all claim inquiries to info@ffhdesign.com.

Larger items such as upholstered furniture or larger wood pieces, will ship with white glove delivery. Our local delivery agent will phone you for a convenient day/time to deliver your items and set them in place.

Pricing & Availability

Formal quotes are honored for 15 days and include cost of items, sales tax and freight estimates (where possible) for white glove delivery. Many of our furnishings are custom upholstered or custom colored and those items are available for immediate production. As many of our items are semi or fully custom, availability of fabrics and frames may change. We reserve the right to substitute fabrics or frames with similar quality and design aesthetic as needed. Please note that an estimated production time for custom items may be shown on your quote. Sales tax is applied when the order is placed. Orders will be processed upon receipt of approval and payment.

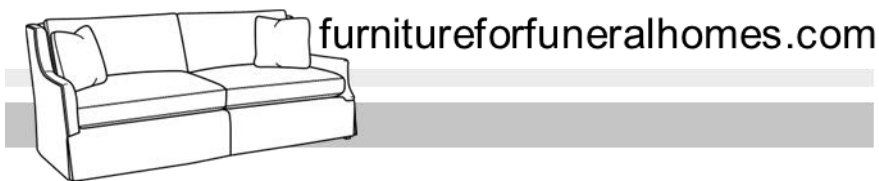


Image Clarity

While all care has been taken to provide accurate color of fabrics and finishes, please note that image color may vary depending on your electronic monitor / device.

Warranties

As many items shown in our collections are semi-custom and custom items, crafted exclusively for the funeral home owner, merchandise is non-refundable and non-returnable except in matters of damage or defect. Both furnitureforfuneralhomes.com and FFH LLC reserve the right to repair or replace merchandise with damage or defect according to manufacturer warranty.

We've cultivated product from a variety of manufacturers and each manufacturer provides differing warranties for their products.

General upholstery warranties may include the following:

- Frames are warrantied for commercial use for up to 10 years
- Springs are warrantied for commercial use for up to 10 years
- Accent chair frames are warrantied for 6 years
- Cushions are warrantied for 2 years

Note that some fabric stretching is normal and is not covered under warranty.

furnitureforfuneralhomes.com is a division of **FFH design**, offering custom full-service design to the funeral industry nationwide. For more information please email info@ffhdesign.com or call 262.806.7143. We'd be glad to assist.



furnitureforfuneralhomes.com

262.806.7143
S98 W12712 Loomis Drive
Muskego, WI 53150

furnitureforfuneralhomes.com
ffhdesign.com
info@ffhdesign.com