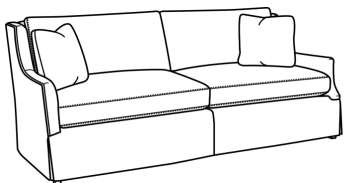


*Farmhouse Redux  
Collection*

PROFESSIONALLY DESIGNED COLLECTIONS OF FURNISHINGS  
FOR THE FUNERAL INDUSTRY



**furniture**forfuneralhomes.com

**furniture**forfuneralhomes.com

info@ffhdesign.com

262.806.7143

## Welcome to **furniture**forfuneralhomes.com

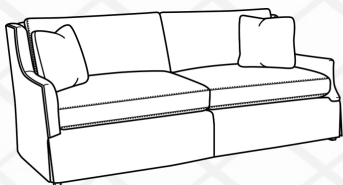
We've spent nearly 20 years serving the funeral industry nationwide with professional, fully-custom interior design. In that time we've had the privilege of serving hundreds of funeral homes from various geographic areas, different cultures and with different economic abilities. And while we love providing owners with full-service interior design, from front of the house to back of the house - from floors to ceilings, we also want to serve the broader community of funeral homes, by offering professionally designed, entire rooms full of furniture, *without actually having to hire a designer*. We've used our expertise to pull together furniture collections where you, the owner, can browse for the pieces you need to complete your space. Create an entire room or entire facility with furnishings at the right price - already designed - and available to order. We've combed through hundreds of furniture and furnishings items to professionally curate our collections. From carpet and LVT to furniture and fabrics for your window treatments, each piece within a collection is meant to work seamlessly with another. No guesswork. Just find a collection that best suites your brand and tastes, choose the items that work for you, complete the request for quote form and we'll provide a quote. It's that easy. Our collections are shown both in print and for download online at **furniture**forfuneralhomes.com. And for further help, we've added paint color selections and other design advice on our website.

All products shown have been carefully selected for the funeral industry. Arm height and seat height are appropriate for all age groups. Seat cushions are crafted with commercially viable materials that will hold-up over time. Furniture finishes are done with a several step process ensuring many years of enjoyment. And all furnishings come with their own manufacturer warranty. That's peace of mind.

We want to make the buying decision easy, but it doesn't stop there. Shipment of items will either come UPS, FedEx or Common Carrier. For common carrier items, we'll arrange white glove delivery so you can expect items to be delivered inside your funeral home and placed according to your requirements. Thank you for interest and happy browsing!



Owner & Managing Director



**furniture**forfuneralhomes.com

**furniture**forfuneralhomes.com

info@ffhdesign.com

262.806.7143

From the Farmhouse Redux Collection

## Charlotte Sofa



Casual and elegant, the Charlotte Sofa is a 3-cushion comfortably upholstered in a soft charcoal and cream check fabric. Comes with four accent fabric pillows—2 in robin egg blue and 2 in a neutral stripe.

Dimensions 83w 34d 35h

Made in the USA

Item KFR03-96290CH

From the Farmhouse Redux Collection

## Charlotte Loveseat



As with the Charlotte Sofa, the Charlotte Loveseat uses a high-density, commercially viable cushion. Two accent pillows use hypoallergenic synthetic down fill.

Dimensions 59w 34d 35h

Made in the USA

Item KFR02-96290CH



From the Farmhouse Redux Collection

## Georgie Chair

Delightfully versatile, the Georgie Chair pairs well with our Charlotte Sofa or Loveseat. Not too large, not too small, this chair is comfortable for an entire visitation. Back fabric brings warmth to the space and the seat is upholstered in textured vinyl for added cleanability. Chair frame in mahogany black finish with smoke nailhead trim.

Dimensions 24w 24d 39h

Made in the USA

Item KFRAW-85490CH



From the Farmhouse Redux Collection

## Olde Oak Round Accent Table

A one-of-a-kind design, the Olde Oak table is a combination of concrete and craftsmanship. The base speaks of an aged oak wood grain and the top is concrete in a Bone finish.

Dimensions 25.5dia 24h

Item BH321-303

From the Farmhouse Redux Collection

## *Driftwood Round End Table*

Lovely, wire-brushed driftwood finish crafted from quartered yellow pine veneers. Dimensions 28dia 27.5h

Item HFR40532



From the Farmhouse Redux Collection

## *Driftwood Side Table*

Wire-brushed driftwood finish. Lower display shelf, operable drawer.

Dimensions 26w 28d 27h

Item HFR30532



From the Farmhouse Redux Collection

# Gracie Arm Chair



Great choice for family seating or any other location in your facility. Comfortable frame dimensions and upholstered in a soft, durable check fabric of charcoals and neutrals.

Made in the USA

Dimensions 24.5w 24d 33.5h

Item KAW-01590CH



From the Farmhouse Redux Collection

# Metalworks Round Accent Table

Features a metal base finished in black with a round White Oak top.

Dimensions 26dia 24h

Item F91-3608



From the Farmhouse Redux Collection

## *Pappy Bariatric Chair*

Upholstered in a charcoal and neutral stripe fabric pattern. Perfect to intersperse among your chapel chairs. Finished in a rich, warm Montana Walnut stain. Rated up to 500lbs.

Dimensions 34w 25d 35h

Made in the USA

Item KRAB-37190CH



From the Farmhouse Redux Collection

## *Lawrence Lounge Chair*

Upholstered in a lovely Robin's Egg Blue and accented with a charcoal and cream check pillow. Frame finished in a rich, warm Montana Walnut stain.

Dimensions 32.5w 36d 40h

Made in the USA

Item K50-35390CH



From the Farmhouse Redux Collection

## Gooseberry Bench

Rustic Flint wood finish. Upholstered in a warm charcoal and neutral check pattern. Perfect for a farmhouse interior.

Dimensions 28w 22d 20h

Made in the USA

Item F02-4725

From the Farmhouse Redux Collection

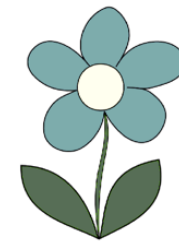
## Bessie Ottomans (set of 2)

Extra seating or accent in front of the Charlotte Sofa or Loveseat, the Bessie Ottomans work! Textured vinyl upholstery.

Dimensions 18w 18d 18h (each)

Made in the USA

Item KFR00-30370







From the Farmhouse Redux Collection

## Mallard Chapel Chair

Now available in both 18" and 20" widths.

Upholstered in "i-clean" fabric. Highly durable and highly cleanable. Warm blend of mushroom, chocolate, and charcoal threads. Paired with a bronze powder coat frame.

Chairs stack 10 high.

Dimensions 18/20w 24d 36h

Item PFRMCC



From the Farmhouse Redux Collection

## Mallard Hand Truck and Pan Dolly

The 3-wheel hand truck is specifically manufactured for our stacking chapel chairs.

Easy stack—easy move within the facility. Fits through standard doorway.

Hand Truck Dimensions 26.8w 25d 49.6h Pan Dolly Dimensions 21.3w 24.2d 5h

Item PFRHT (hand truck) PFRPD (pan dolly)



From the Farmhouse Redux Collection

## *Driftwood Accent Table*

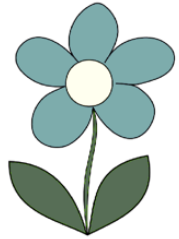
Crafted of solid woods and veneers, the Driftwood Round Table is perfect for Pre-Need or At-Need conversations. One 20" leaf included and extends table to 74".

Made in the USA

Dimensions 54w 54d 30h

Item H12532





From the Farmhouse Redux Collection

## *Driftwood Large Arrangement*

Beautifully crafted trestle style table has (2) 18" leaves which extend the table to 122". Popular driftwood finish over select solids and veneers.

Dimensions 86w 44d 30h

Item HFR02532





From the Farmhouse Redux Collection

## Sammy Lamp

Showcasing a rustic, casual look, the Sammy Lamp has a ceramic, crackle finish base and off-white hardback shade. Uses 150w, 3-way bulb (or LED equivalent.)

Lamp Dimension 27h | Shade 15dia 10h

Item UFR1-29382

From the Farmhouse Redux Collection

## Oma Lamp

Finished in a charcoal glaze with etched texture, the Oma Lamp adds a casual, organic feel to the space. Suitable for a console or taller wood piece. Brushed nickel hardware. Uses 150w, 3-way bulb (or LED equivalent.)

Lamp Dimension 22h | Shade 16dia 10h

Item UFR1-94362





From the Farmhouse Redux Collection

## Creekside Lamp

Glass table lamp which features a timeless shape finished in a distressed white with a myriad of black and gray flecks. White hardback drum shade. Uses 150w, 3-way bulb (or LED equivalent.)

Lamp Dimension 26h | Shade 16dia 10h

Item UFR1-38482

From the Farmhouse Redux Collection

## Tractor Wheel Table Clock

Features a wood grain texture center column with a weathered stainless frame. Accented with brushed nickel detailing. Quartz movement ensures accurate timekeeping. Requires one "AA" battery, not included.

Dimensions 15w 3d 20h

Item



From the Farmhouse Redux Collection

## *Smithing Round Mirror*

Farmhouse design at its finest. The Smithing Round beveled mirror features a petite, antique gold front edge paired with tapered deep sides in a rustic dark bronze distressed finish.

Dimensions 27dia 5d

Item U27390



From the Farmhouse Redux Collection

## *Picket Playful Cyclist*

Metal figurine finished with a sage green patina finish allowing rust colored highlights.

Dimensions 15w 10d 13h

Item U88491

## Our Metalworks Grouping

From the Farmhouse Redux Collection

### Metalworks Round

Lovely beveled 36" round mirror featuring an iron frame finished in a distressed rustic brown with antique gold accent.

Dimensions 36dia 1d

Item U23390



From the Farmhouse Redux Collection

## *Metalworks Rectangle*



The iron frame in distressed bronze and gold accent, houses a stunning beveled mirror. May be hung vertical or horizontal.

Dimensions 22w 1d 32h

Item U11790

From the Farmhouse Redux Collection

## *Metalworks Tall*

The iron frame in distressed bronze and gold accent, houses a stunning beveled mirror. May be hung vertical or horizontal.

Dimensions 32w 1d 82h

Item U67790







From the Farmhouse Redux Collection

## *Driftwood Registry Console*

Great for the registry book, as an accent piece or to use as horizontal surface for tribute items. Three drawers with aged pewter hardware.

Dimensions 72w 18d 38h

Item HFR72532



From the Farmhouse Redux Collection

## *Hour Glass Chest*

A stunning storage chest for any funeral home interior. The Hour Glass Chest complements all items in our Farmhouse Collection and may be used as a smaller registry console or easy to place, display piece. Boasts (3) self-closing drawers.

Dimensions 44w 20d 36h

Item HC58-68058-8227



From the Farmhouse Redux Collection

## *Robin's Lamp Table*

Features three European farmhouse carved posts and one fixed shelf in a happy Robin's Egg Blue distressed finish. Birch solids and veneers.

Dimensions 26dia 26h

Item FFRTA-4118

From the Farmhouse Redux Collection



## Round Café Height Table

Crafted to withstand a large amount of hospitality traffic, the Farmhouse Redux Round Café Table boasts a Riftwood charcoal textured wood grain laminate top over a black powder coat column and x-base. Available in both 30" (seats 3) and 36" (seats 4).

Made in the USA | Dimensions 30/36dia 29h

Items JAKFR30/36R



## Bistro Height Table

With Riftwood laminate top, our Bistro Table works with other café tables in our Farmhouse Redux Collection.

Made in the USA | Dimensions 24dia 42h

Item JAKFRBistro

## Square Café Height Table

The same durability and design sensibility as is in our round tables, the Square Café Height Table comes in both 30" (seats 2) and 36" (seats 4) sizes.

Made in the USA | Dimensions: 30/36w 30/36d 29h

Items JAKFR30/36SQ



From the Farmhouse Redux Collection

## Blacksmith Café Chair

Amazingly easy to clean and easy on the eyes, the Blacksmith Café Chair is crafted with a wood saddle seat and wood back. Non-marring glides are great for any floor.

Made in the USA

Dimensions 18.25w 20.5d 33.5h

Item PFR



## Donnelly Fabric by the Yard

Perfect addition to the Farmhouse Redux Collection, the Donnelly fabric is certain to make a statement in either window treatments, pillows or anywhere you may need an accent. Sold by the yard - 54" width goods. Let us know your yardage and we'll provide a quote.

Item F-238

From the Farmhouse Redux Collection

## Blacksmith Bistro Stool

Saddle wood seat and wood back with non-marring glides. Cross bracing for stability in heavy-use areas and a footrest for protection.

Made in the USA

Dimensions: 18.25w 20.25d 43.25h

Item PFR





From the Farmhouse Redux Collection

## *Front Porch Broadloom Carpet*

Front Porch pattern broadloom carpet is a custom blend of 9 different colors, designed to work with our Farmhouse Redux Collection. Tons of neutrals, grays and charcoals. Available for direct glue (recommended) installation with or without pad. 140sy minimum for best pricing. Just let us know your quantity.

Made in the USA

Item DH-50778D

From the Farmhouse Redux Collection

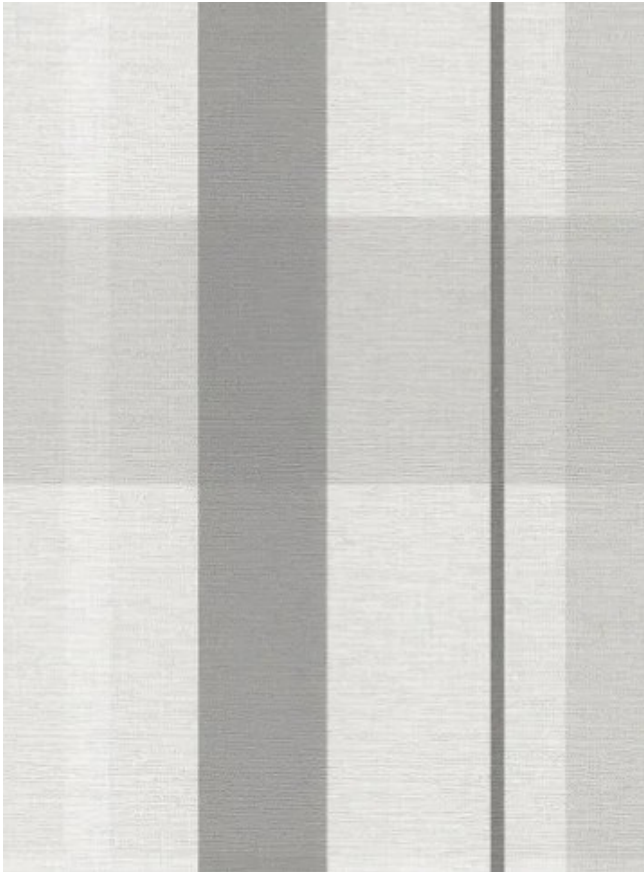
## *Back Door Luxury Vinyl Tile*

Designed for heavy-use traffic, the Back Door LVT has a 22mil wear layer and texture that will fool even the most astute. 9" by 60" planks and sold by the box. Each box contains 22.4sf. Suitable for direct glue installation. Please let us know how many square feet you need and we'll send a quote.

Made in the USA

Item F-237





From the Farmhouse Redux Collection

## *Salt & Pepper Wall Covering*

A new twist on a traditional plaid, the Salt & Pepper Wall Covering is a Type II Vinyl and well-suited for any commercial installation. Light colors of whites and soft grays - perfect for a restroom, pre-need office or hospitality area. 54" width bolts and sold by the yard.

Just let us know your quantity.

Item M57220CM

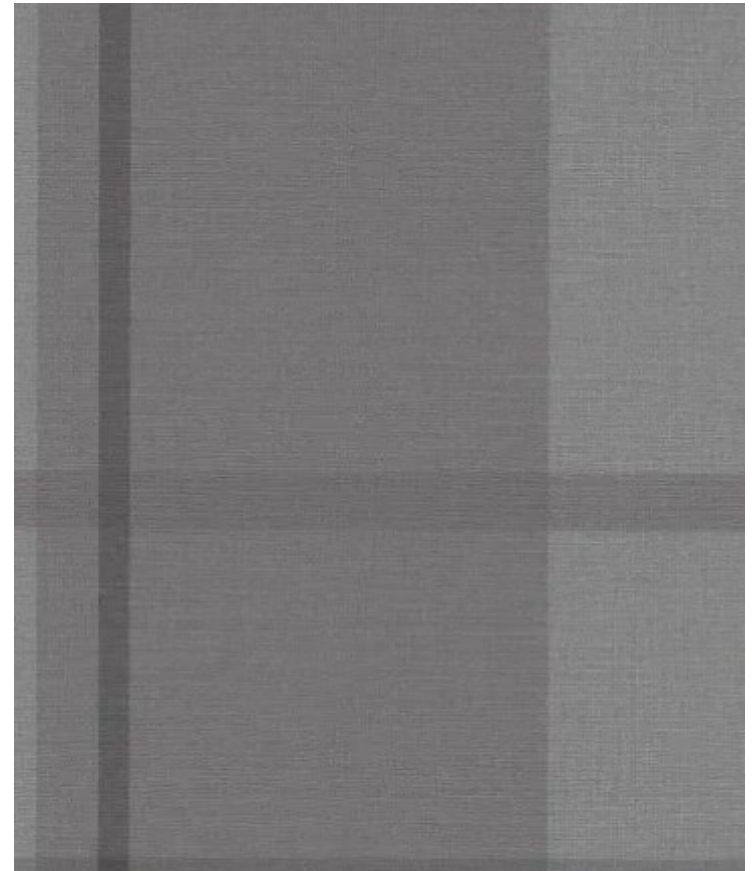
From the Farmhouse Redux Collection

## *Cracked Pepper Wall Covering*

Truly the masculine version of the plaids, our Cracked Pepper Wall Covering takes the traditional plaid and steps it up. Current yet timeless. Try this in a men's restroom or on an accent wall. 54" width bolts and sold by the yard.

Just let us know your quantity.

Item M08220CM



From the Farmhouse Redux Collection

## *Benjamin Silk Tree*

Natural realism and always lush, this Ficus will be potted in a matte black cubico container. Quite suited to the Farmhouse Redux Collection.

Dimensions 5'-6" (approx)

Item PETFRBen



From the Farmhouse Redux Collection

## *Peace Lily Floor Plant*

Fullness and freshness without the maintenance. Potted in a fiberglass 11" x 14.75" garden glaze container in black.

Dimensions 30-36" in height (approx)

Item PETFRPL



From the Farmhouse Redux Collection

## *Opa Floor Plant*

Lovely variegated foliage. The Opa Floor Plant requires no maintenance, just open the box, fluff the leaves and you're good to go. Potted in a matte black cubico container.

Dimensions 24-30" in height (approx)

Item PETFROPA

From the Farmhouse Redux Collection

## *Silver Birch Silk Tree*

Certainly a statement piece, this 7' silk silver birch is full and lush. Perfect for adding life to a chapel corner. Potted in a matte black cubico container.

Dimensions 7'-0" in height (approx)

Item PETFRSB





From the Farmhouse Redux Collection

## *Wexford Casket Bier*

Engineered to meet the needs for both standard and oversize caskets, the Wexford Casket Bier is available either in durable Florence Walnut laminate or solid woods and veneer stained with a Florence Walnut finish. Includes hidden industrial 365-degree casters. Cross installed on one side.

Made in the USA

Dimensions 62.5w 24d 21-3/8h



From the Farmhouse Redux Collection

## Wexford Flower Pedestals

Engineered to meet the needs for both standard and oversized caskets, the Wexford Casket Bier is crafted with durable Florence Walnut laminate or solid woods and veneer stained in Florence Walnut finish. Includes hidden industrial 365-degree casters. Cross installed on one side.

Made in the USA

Dimensions 62.5w 24d 21-3/8h



From the Farmhouse Redux Collection

## Wexford Baby Bier & Urn Table

Four casters for flexibility, the Wexford Baby Bier also serves as an Urn Table. And we've added a separate Urn Stand, allowing you to have more flexibility in your cremation presentations. Ample horizontal surface and crafted with Florence Walnut laminate or solid woods and veneer stained in Florence Walnut finish. Cross installed on one side.

Made in the USA

Baby Bier / Urn Table Dimensions 48w 30d 30h

Urn Box Dimensions 20w 20d 10h

From the Farmhouse Redux Collection

## Wexford Crucifix with Stand

Crafted in either Florence Walnut woodgrain laminate or in wood veneers. The Wexford Crucifix with Stand includes both corpus and INRI applique in bronze finish.

Made in the USA

Dimensions 12w 12d 89h



From the Farmhouse Redux Collection

## Wexford Vigil Candle Stands

Sold as a pair, the Wexford Vigil Candle Stands may be made in either Florence Walnut woodgrain laminate or in wood veneers. Your choice. Comes with red glass shade and ready for your votive candle and votive candle holder. The holder and candle sits inside the red glass shade.

Made in the USA

Dimensions 10w 10d 51h





From the Farmhouse Redux Collection

## Wexford Lectern

Florence Walnut laminate or wood veneer construction (your choice), with sturdy 4-caster base. Black gooseneck battery powered LED lighting. Slanted top with pencil stop and open shelf underneath. Made in the USA

Dimensions 24w 20d 45h

Items JAKLLAM (laminated) - JAKLWDV (wood)



From the Farmhouse Redux Collection

## Wexford Prayer Kneeler

Florence Walnut laminate or wood veneer (your choice). High density foam for knees and elbows and upholstered in a woven mix of gray tones. With cross. Made in the USA

Dimensions 44w 24d 32.5h

Items JAKPKLAM (laminated) - JAKPKWDV (wood)

## Freight & Delivery

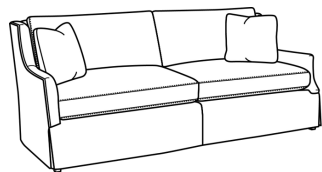
Product shown may come from a variety of sources. Freight costs may be shown on your quote. Each item is carefully inspected prior to leaving the manufacturer and, where practical, again prior to delivery. However, should an item arrive with damage or defect, furnitureforfuneralhomes.com or our respective umbrella company, FFH LLC, reserve the right to either repair or replace damaged or defective merchandise according to the manufacturer warranty. Both furnitureforfuneralhomes.com and FFH LLC shall be held harmless of any damage or defect in merchandise.

In the event of damage or defect in merchandise, proper authorization must be garnered prior to repair or replacement of item (s). Visible damage must be immediately noted on the carrier's receipt / bill of lading / shipping paperwork. All claims must be submitted with furnitureforfuneralhomes.com, accompanied by an electronic photo of the damage/defect. Please submit all claim inquiries to info@ffhdesign.com.

Larger items such as upholstered furniture or larger wood pieces, will ship with white glove delivery. Our local delivery agent will phone you for a convenient day/time to deliver your items and set them in place.

## Pricing & Availability

Formal quotes are honored for 15 days and include cost of items, sales tax and freight estimates (where possible) for white glove delivery. Many of our furnishings are custom upholstered or custom colored and those items are available for immediate production. As many of our items are semi or fully custom, availability of fabrics and frames may change. We reserve the right to substitute fabrics or frames with similar quality and design aesthetic as needed. Please note that an estimated production time for custom items may be shown on your quote. Sales tax is applied when the order is placed. Orders will be processed upon receipt of approval and payment.



**furniture**forfuneralhomes.com

## Image Clarity

While all care has been taken to provide accurate color of fabrics and finishes, please note that image color may vary depending on your electronic monitor / device.

## Sales and/or Use Tax

This varies by State. Any appropriate sales tax will be shown in the quote. If sales tax is not shown in the quote, it is the responsibility of the end-user to pay use tax on that purchase.

## Warranties

As many items shown in our collections are semi-custom and custom items, crafted exclusively for the funeral home owner, merchandise is non-refundable and non-returnable except in matters of damage or defect. Both furnitureforfuneralhomes.com and FFH LLC reserve the right to repair or replace merchandise with damage or defect according to manufacturer warranty.

We've cultivated product from a variety of manufacturers and each manufacturer provides differing warranties for their products.

General upholstery warranties may include the following:

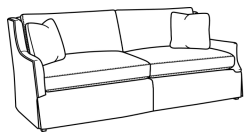
Frames are warrantied for commercial use for up to 10 years

Springs are warrantied for commercial use for up to 10 years

Accent chair frames are warrantied for 6 years

Cushions are warrantied for 2 years

**furniture**forfuneralhomes.com is a division of **FFH design**, offering custom full-service design to the funeral industry nationwide. For more information please email info@ffhdesign.com or call 262.806.7143. We'd be glad to assist.



**furniture**forfuneralhomes.com

262.806.7143

S98 W12712 Loomis Drive

Muskego, WI 53150

**furniture**forfuneralhomes.com

ffhdesign.com

info@ffhdesign.com