

Architecture | Interior Design | Fit out | Construction

Awards



# Our Company

REVIVAL is an award winning design and build company was first established by the Architect Emad A. Salameh in 2008 Amman, Jordan.

Salameh passion for modern, minimal design built at budget and on time was reflected in projects to come and further asserted as the company grew. The company's focus was on creating experiences that users can enjoy through visionary and clever design and construction solutions.

Today, REVIVAL design and build offers a complete design and construction process with an extensive range of services that include: Architecture, Interior Design, Construction Management, Fit out, Facility Management, and Branding.

Being also a specialized interior contractor, REVIVAL works in all phases of interior construction, from the bare shell, including demolition, design, concrete works, dry wall partitions, plumbing, electrical, mechanical, air conditioning and all other related areas. Every phase is professionally coordinated and supervised. When required, REVIVAL will work in perfect coordination with other companies or professionals directly contracted by the client. Our policy to work in close communication with these professionals, will always results in a functional and efficient final product.

With REVIVAL, we will ensure a smooth and reliable design and construction process with boundless innovation & creativity.

## Some of Our Projects:

### Offices

- United Nations Building – IOM
- Amazon.com Building Offices
- International Rescue Committee Building Offices
- Queen Rania Association Offices
- Qabalan Bakery Office Building
- Equiti Offices
- Al Eiman Offices
- Migrate Office Building
- Business Hub Offices
- Alrazzaz Offices
- Ashley Building
- Indo Offices
- Samara Tours Offices

### Villas and Residential

- Abu Rukbeh Residence
- Samara Villa
- Manasra Villa
- Alraqi Villa
- Abu Alfilat Villa
- Salameh Farm
- Istikbal Showroom

### Retail and Showrooms

- Qabalan Bakery Showroom
- Izhiman Showroom
- Maraqa Showroom
- Elite Showroom
- Opty Sport Showroom
- Istikbal Showroom

### Restaurants and Cafes

- Dayaa Restaurants
- Lebnani Snack Restaurants
- Indoor Café
- Grillmaster sandwich joint
- Steakanji Restaurants
- Black Rock Steakhouse
- Cannella Café
- On Fire Kabab house
- Shawermix Restaurant
- Authentic Cafe

# Our Services

RCC provides Jordan and beyond with distinguished services that set new parameters of excellence.

## Fit out Contracting

RCC interior fit-outs for commercial, residential, retail and hospitality projects.

Our team works relentlessly to deliver creative and cost-effective solutions to fulfil the client's needs. By blending artistic interpretation, high-quality materials, and cutting-edge technology, we create interior environments that connect, inspire and captivate people.

We have a proven track record working on all types of fit-out projects throughout the region and beyond.

RCC takes pride in delivering the best results even when we face extremely tight and complex deadlines. RCC has a proven record of successfully completed projects and has many satisfied clients. Supported by our experienced design and management team, our fit-out teams complete our unique operating model, giving us the edge over traditional fit-out companies through our ability to manage time, cost and quality from design to execution right through to delivery and completion.

## Manufacturing

RCC manufacturing and production are equipped with state of the art and modern technology to enable multi-run production of high-end quality finishes.

Our skilled craftsmen and stringent quality control procedures ensure the quality of our products are consistently maintained and delivered to the highest standard.

RCC manufactures and installs all types of doors, BM Trada registered fire-rated doors, wardrobes, kitchen units, vanity units, and bespoke joinery interiors for commercial and residential projects, including the manufacturing, supply and installation of contract furniture, case goods, upholstered furniture and soft seating.

The company's committed to maintain the highest quality standard at every stage has resulted in delivering products with superior finishes and unique values – from classical and traditional to contemporary and modern designs.

## Design and Build

**Our creative team delivers projects from conception to completion**

We offer a fully-managed one-stop design and build service, undertaking all aspects of turnkey projects. Our team of design experts will work with you throughout the development process and beyond. Using the latest 3D CAD and BIM Design software, we provide our clients

with a fully visualised design concept. Driven by passion for great designs, aesthetic finishes and pursuit for excellence, RCC elevates creative process to provide clients with a new perspective in interior fit-out solutions.

From initial design and planning, we deliver full fit-out projects right through to hand over. Our multi-skilled teams are dynamic and get involved in different parts of each project.

We provide a wide range of in-house services to ensure our design & build team delivers the project to the highest standard. Our fit-out works from flooring, ceiling, partition, joinery, upholstery to electrical and mechanical is executed by our carefully selected in-house team.

## Project Management

Our project management team is composed of qualified and experienced professionals who consistently deliver quality work to the highest standard. From small to large-scale projects, RCC aims to exceed the client's expectations delivering every project. With over 13 years' experience as a fit-out company, we have the right team, the right process, planning and structure in place to deliver successful projects.

RCC holistic approach to processes and evolution means that we value and respect health, safety and quality control. Our team has extensive knowledge and experience to ensure that everything runs smoothly within the given time and budget. From brief development and design planning, through to construction and building requirements, refurbishments, fitting selection and execution of all details. Under our project management team's direction and commitment to delivering excellence, our clients can remain confident that the finished project will exceed their expectations.



## About Emad Salameh

A licensed interior architect by Jordan Engineering Association, and a certified contractor by Jordanian Construction Contractors Association, Emad Salameh has established various projects in the fields of architecture, interior design and business. His entrepreneurial experience grew over the years as he founded REVIVAL design and build studio in 2009. His designs reflect his interest in the different types of materials & futuristic design concepts.

He held several initiatives; the first being in 2010 for Road Safety and the other in 2013 to promote Jordan's hospitality and tourism as well as writing Jordan's first building and construction guide as a source guide of products, and materials in Jordan.

Salameh international experience in Saudi Arabia working for project various office buildings with Aramco Saudia. In New York city working on multiple projects: Bank of America retail stores, and ImClone pharmaceutical company offices.

In 2019, and 2020 Emad A. Salameh was awarded the A Design Award for Equiti Offices as the best retail project in Amman, Jordan and the best space and exhibition design and construction category in Jordan from the international design academy. In 2018 was awarded the best interior in Amman, Jordan by the international property award.

*Emad Salameh*









## **Architecture**

At REVIVAL, we see the remarkable possibilities in the way we influence buildings and people's behavior and lives through customized project that meets the client's needs in all aspects. Our projects impact the community, and creates value to the user with our careful project details that serve function and purpose in every space. Our firm aims to save time, cut costs, and deliver innovation.

## **Interior Design**

Our interior projects technique have evolved over time to set outstanding accomplishments in a variety of projects in the fields of restaurants, cafes, showrooms, offices and villas. Our ability to create different projects moods from authentic, to modern to industrial to classic project creates the perfect composure of detail and clean project.

## **Construction Management**

Our professional service uses specialized, project management techniques to oversee the planning, design, and construction of a project, from its beginning to its end by that control a project's time, cost and quality. Our goal is perfection to the very last detail.

## **Branding**

We believe that the identity of the company is what makes the project complete. which is why we our design process relies the careful selection of colors, shapes and outlines that make the design and creates the general mood of the project as we believe that the design process is a whole process that needs to be perfected from A to Z.

We take responsibility for one's own or one's employees' performance, by setting clear goals and expectations, tracking progress against the goals, ensuring feedback, and addressing performance problems and issues promptly.

# Offices

Interior Design | Fit out | Construction

**Project Year:** 2019

**Project Status:** Opening

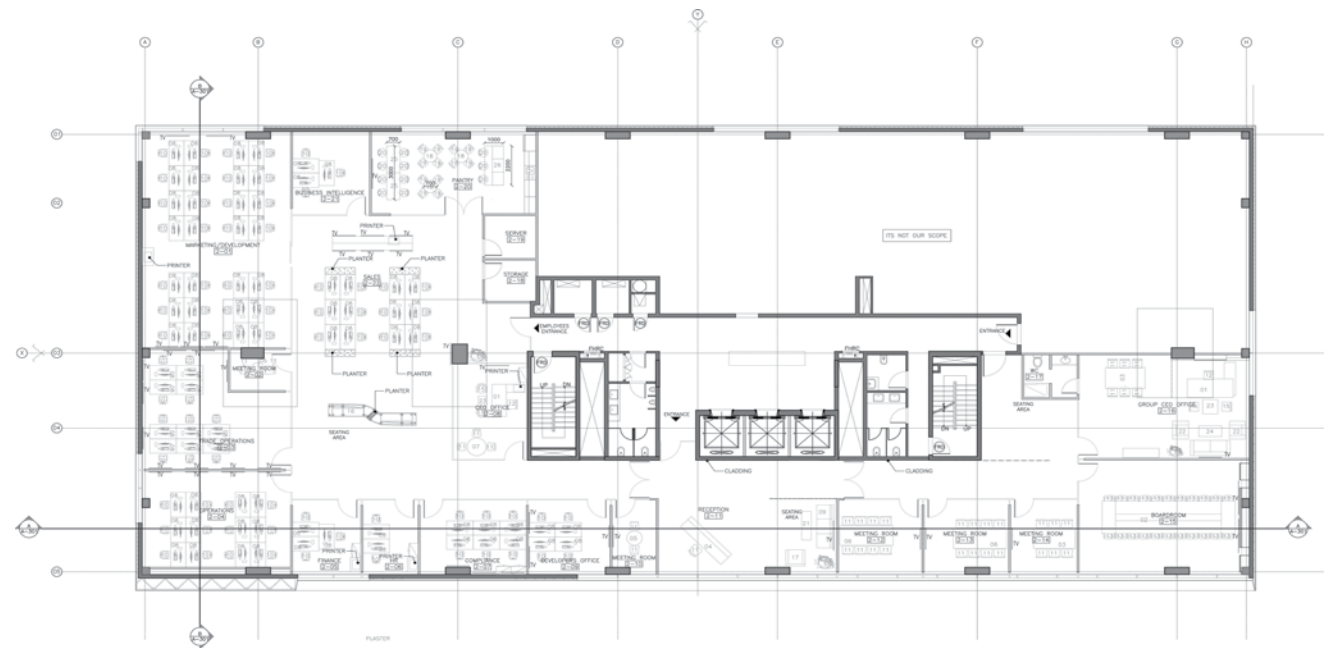
**Project Location:** Amman, Jordan

**Area:** 12,000 sq.ft.

# Equiti Group Limited

Equiti Group offices were designed and executed by project team, including fitout and furniture. The design aimed to create an open space with an eye pleasing comfortable atmosphere to enhance productivity. Grey and white colors dominated the general mood with touches of colors that were strategically placed, along with an exposed ceiling and tall glass partitions.

The administrative department design reflected elegance through the use of Wood and Pietro Grey marble which shined upon basic white and grey colors, while meeting rooms were each given a creative concept with its own set of special colors to further increase the sense of space.



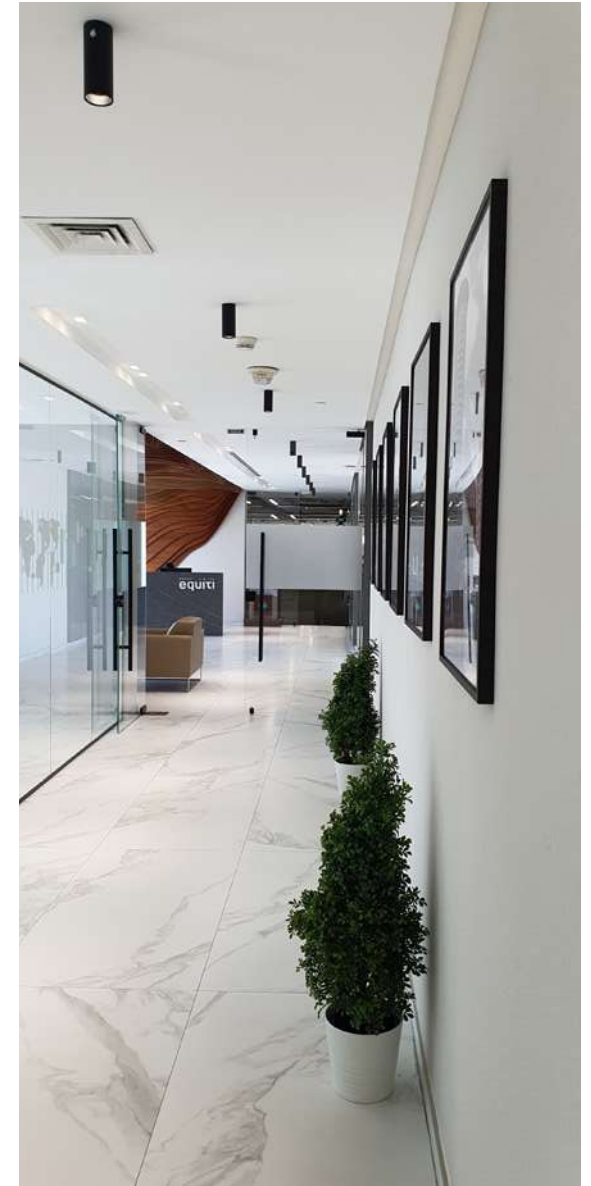










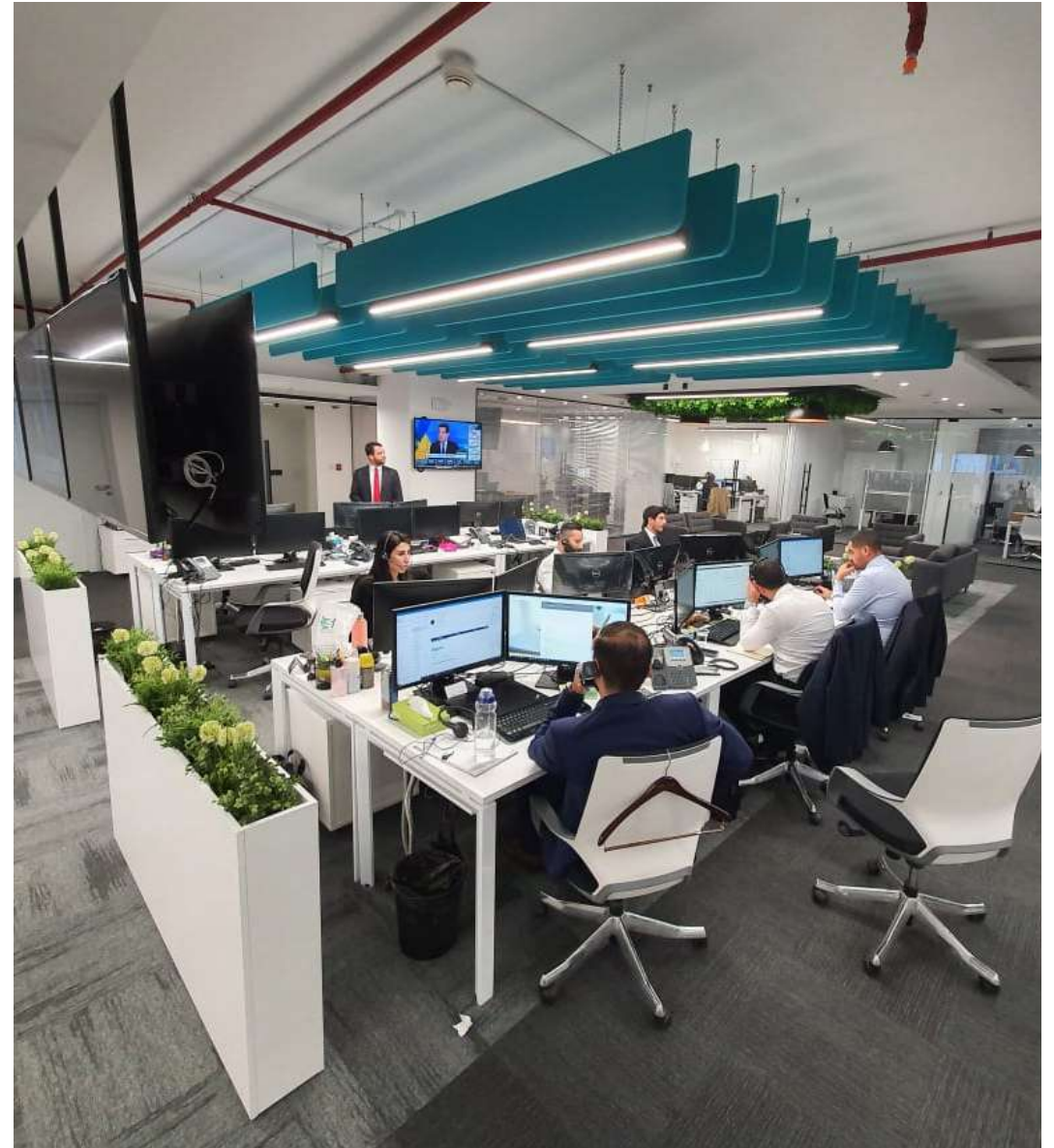
























**Project Year:** 2021

**Project Status:** Opening

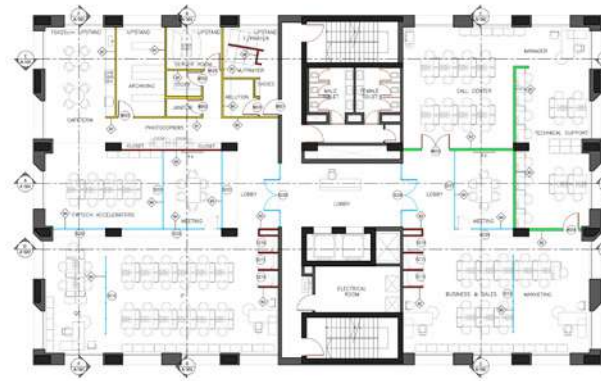
**Project Location:** Amman, Jordan

**Area:** 21,500 sq.ft.

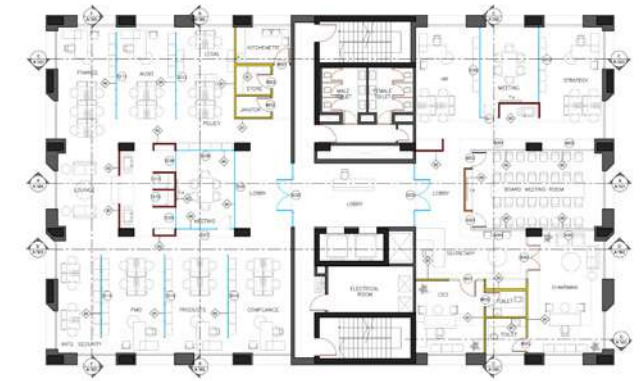
# MADFOOATCOM Offices

## KING HUSSEIN BUSSINESS PARK

MADFOOATCOM Offices is a fast track project that needs to be excuted within a tight time frame with and the best quality.



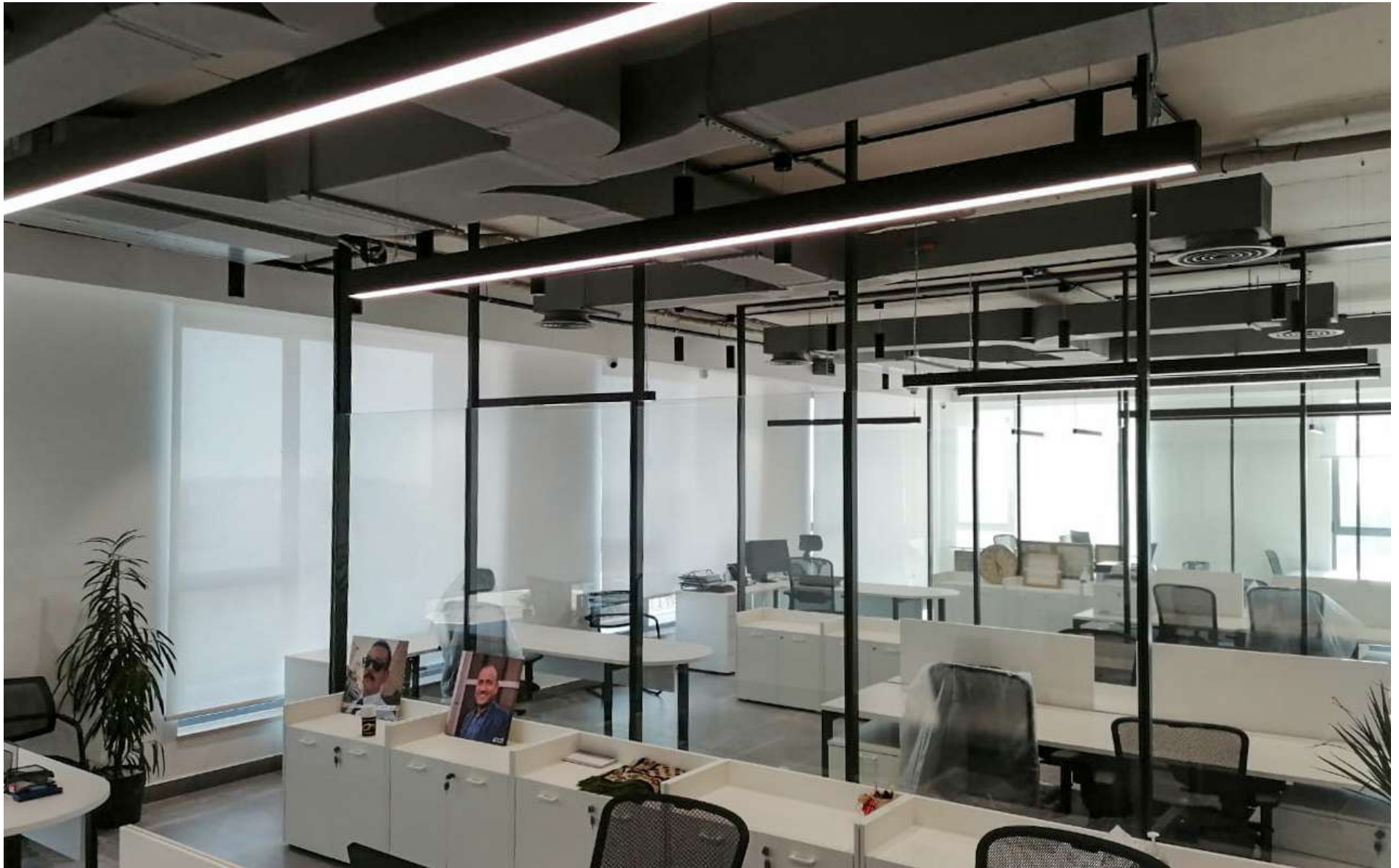
4th Floor Plan



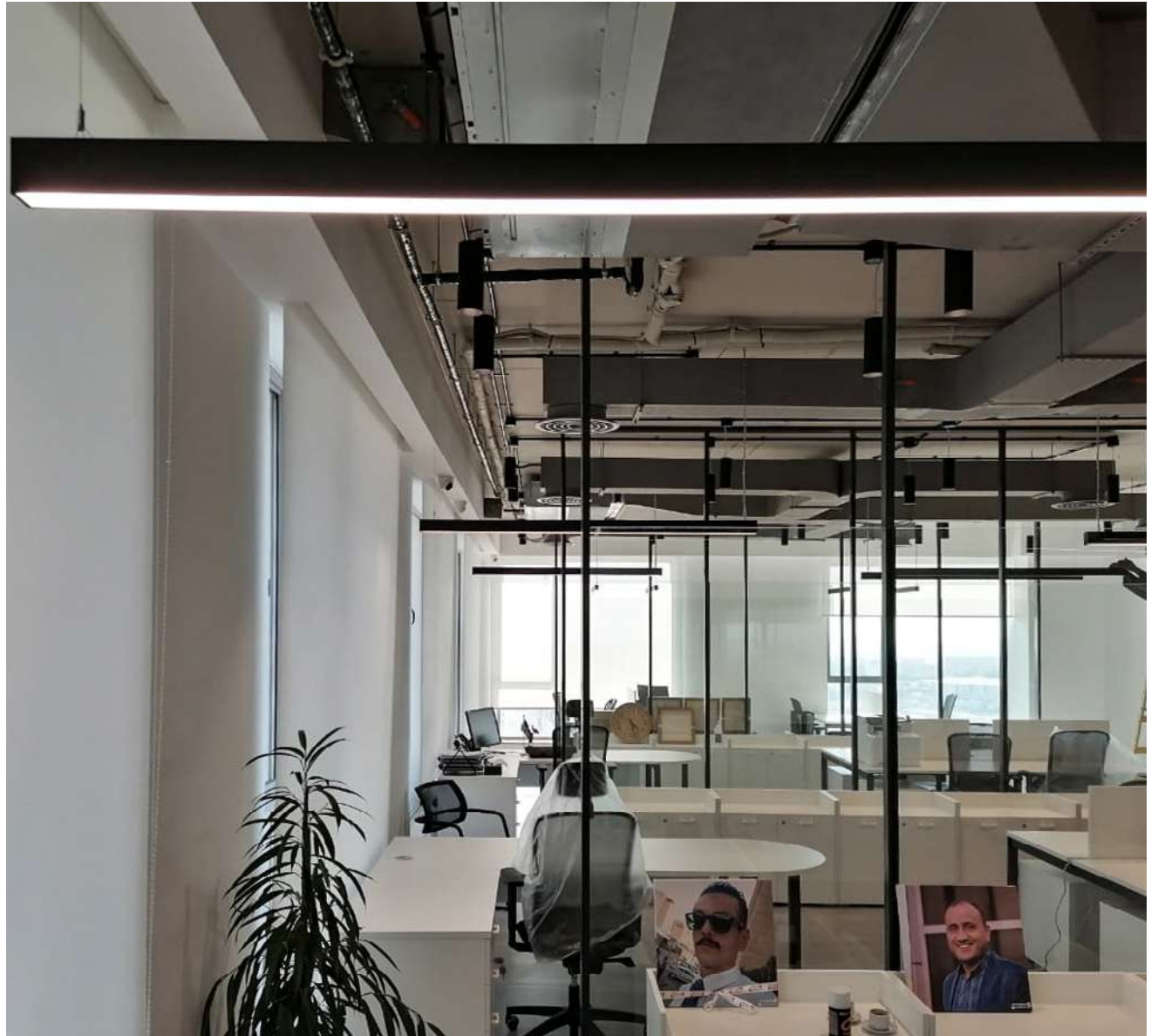
5th Floor Plan

















**Project Year:** 2018

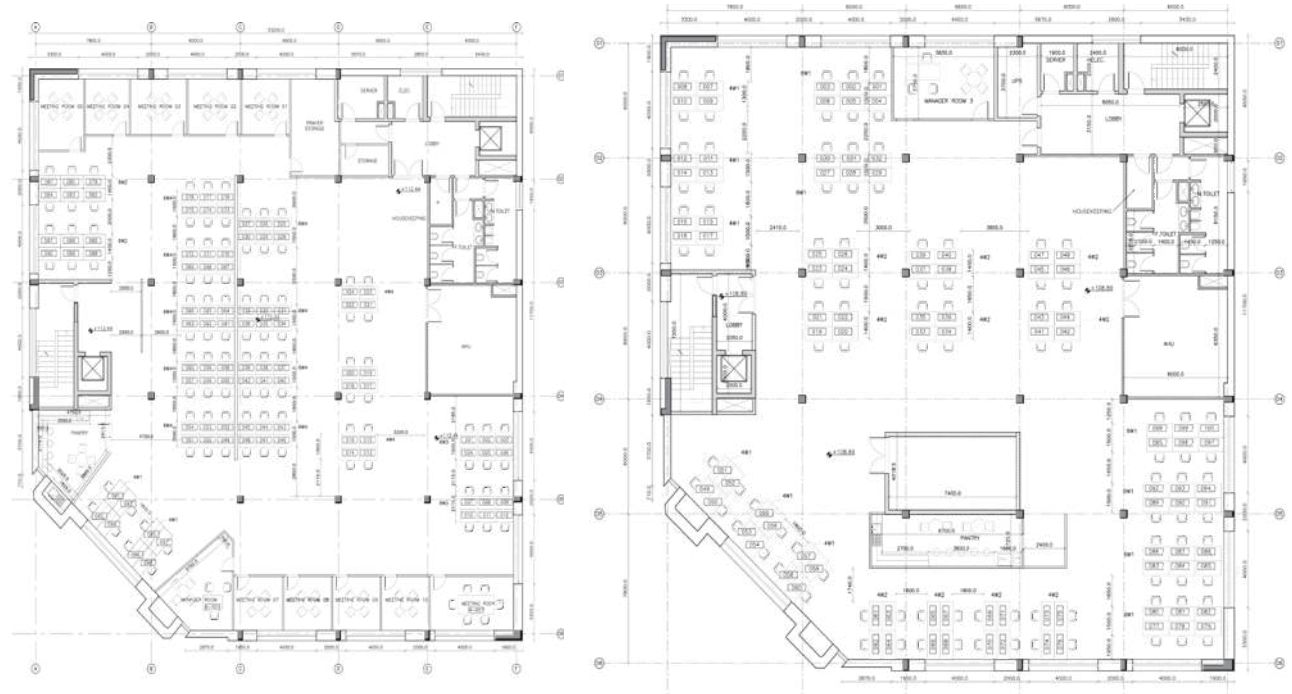
**Project Status:** Completed

**Project Location:** Amman, Jordan

**Area:** 20,000 sq.ft.

# Amazon -AJIB

REVIVAL was responsible for designing and executing the interior scheme of Amazon.com Office Building-AJIB in a short time frame with qualified value engineering techniques. Our design, site and MEP teams collaborated to deliver the best quality of work that rightly suits the function of the space and employer requirements. With the same high standards and design aims, the offices were intended to create an eye pleasing and comfortable work atmosphere and to further encourage a collaborative healthy work environment for employees.

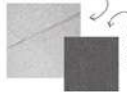


## Concept

Desa Grey carpet tiles were used throughout the project as well as acoustic ceiling tiles that will decrease the noise intensity. As for the kitchen, anti slip floor tiles were used with the yellow kitchen background to emphasize the vibrant atmosphere and the logo color while the countertops were industrial barzani marble tops. Opposite to the kitchen is the break area with white tables and Charles Eames chairs. The idea was to create a signature exciting color for each room to change moods and encourage a fun atmosphere. Cool lighting 50x60 was distributed across the offices.



USG NOISE REDUCTION ACOUSTICAL CEILING



Grey Desa Carpet Tiles 50x50



Vitra Charles & Ray Eames DSW Chair



Anti Slip Floor Tiles

DARK GREY LAMINAM TILES



LIGHT WHITE PENDANT BY EGLO RAZONI

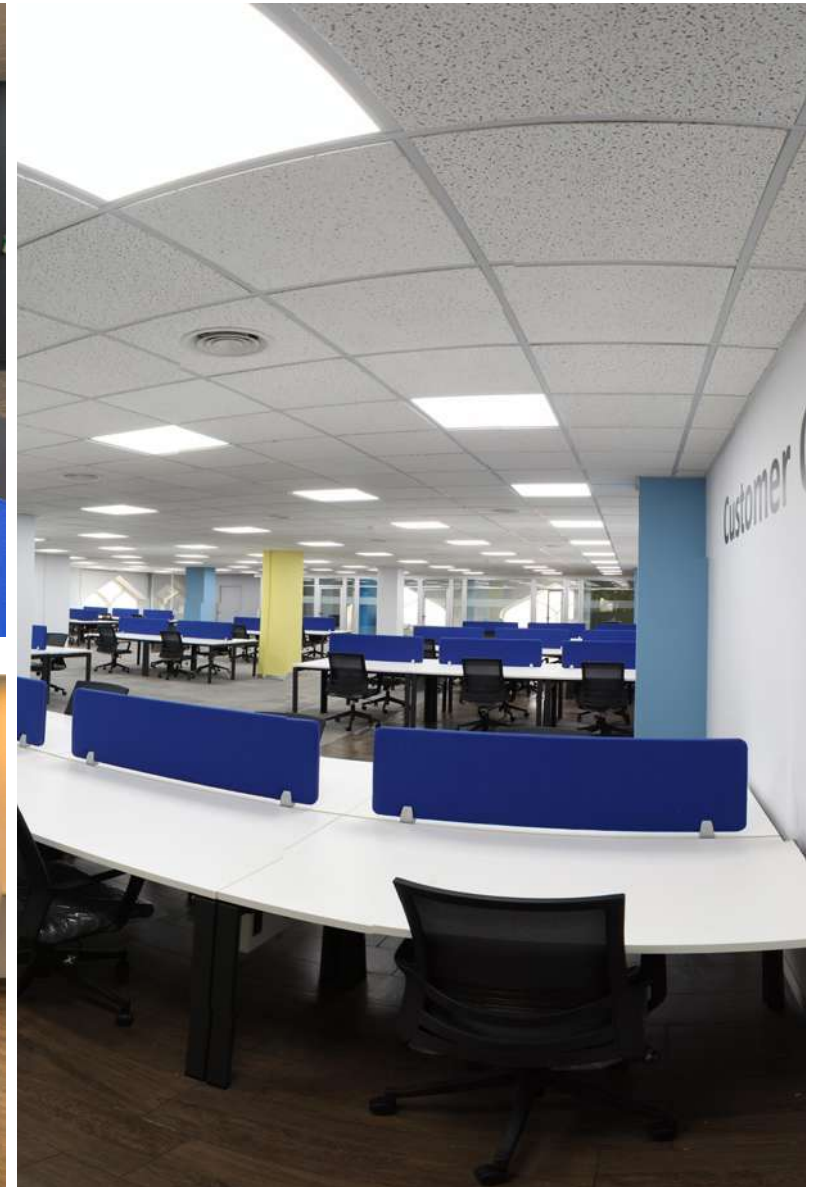


Cool Lighting 60x60

Color Palette











**Project Year:** 2021

**Project Status:** Under Construction

**Project Location:** Amman, Jordan

**Area:** 20,000 sq.ft.

# 5th Circle Offices













**Project Year:** 2018

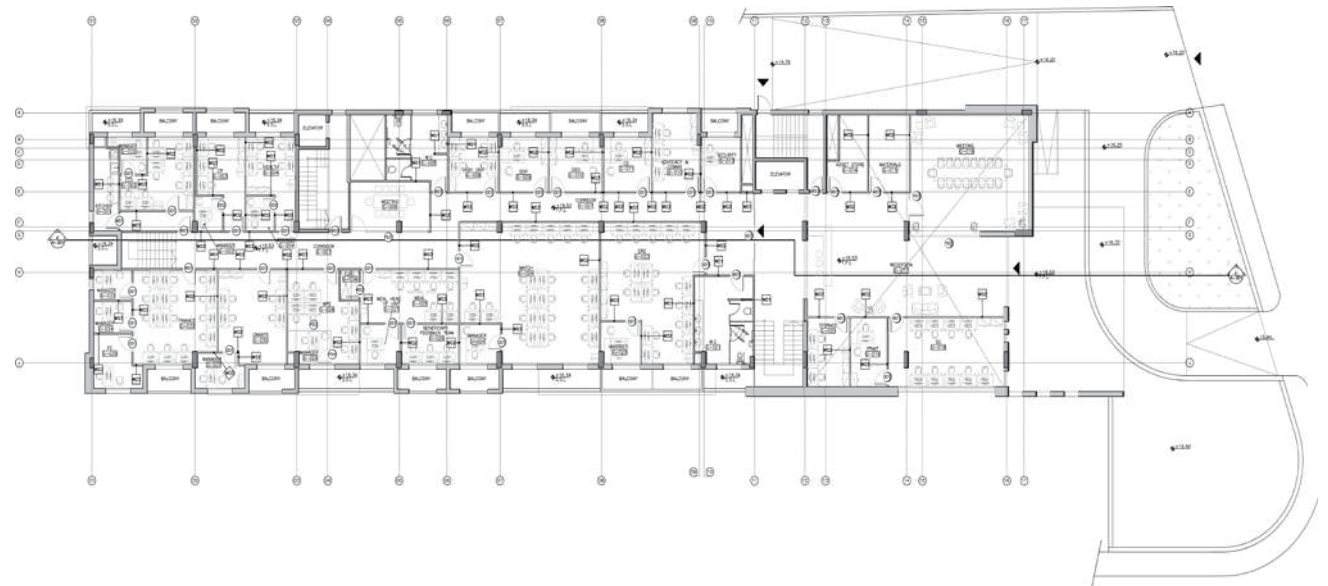
**Project Status:** Completed

**Project Location:** Amman, Jordan

**Area:** 48,000 sq.ft

# International Rescue Committee

Our professional services use specialized project management techniques to oversee the planning, design, and construction of the project, from its beginning to its end, by that controlling the project time, cost, and quality. The challenging part was to execute all the floors at the same time in a very short period. Using our construction methodology, we succeeded in delivering the intended project goals and meeting client satisfaction.







**Project Year:** 2019

**Project Status:** Under Construction

**Project Location:** Amman, Jordan

**Area:** 9000 sq.ft.

# Queen Rania Award for Excellence in Education (QRAEE)

REVIVAL was responsible for the design and Management of Queen Rania Association Offices. The project reflected a minimal design approach that focused on functional work spaces with efficient timely delivery, following our construction methodology throughout the whole project's life cycle.







**Project Year:** 2018

**Project Status:** Completed

**Project Location:** Amman, Jordan

**Area:** 27,000 sq.ft

# International Organization Migration

scope of work was to undertake the design and execution of the renovation for the United Nations – IOM mission building in Amman – Jordan. The building is an existing 9 storey building. REVIVAL scope was to evaluate the site status through assessment reports, and to provide the design and execution of all the ID, fit out and electromechanical work.





**Project Year:** 2017

**Project Status:** Opening

**Project Location:** Bayader, Amman

# ALEIMAN

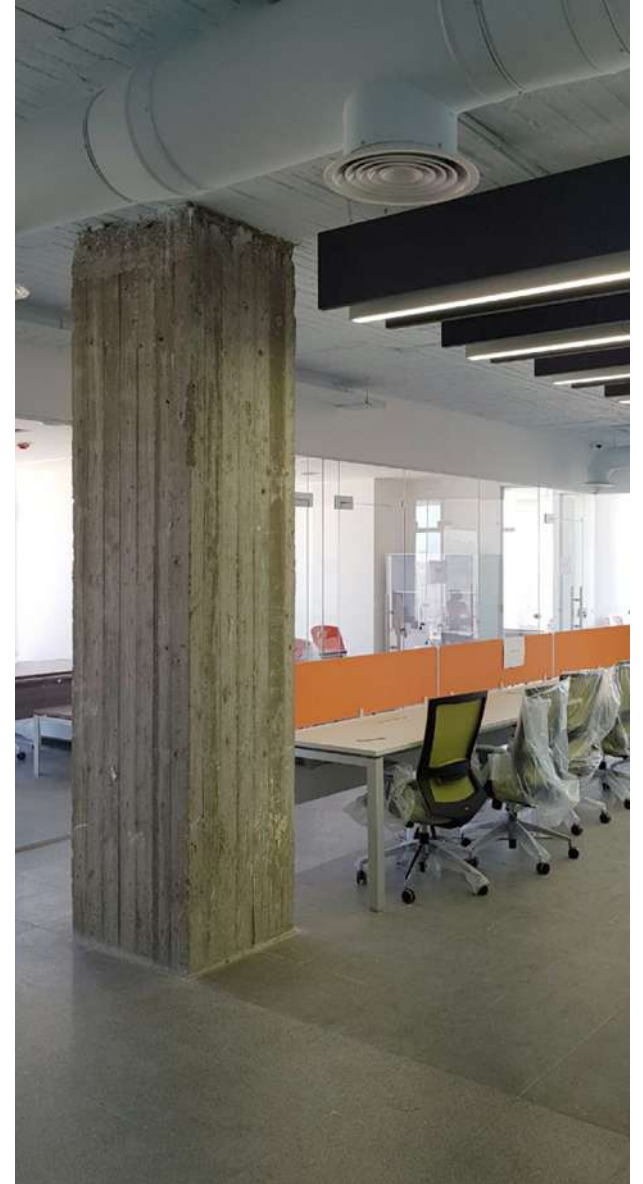
Al Eiman offices interior aims to create an open, clear and eye pleasing ambience as well as an inviting sociable environment for the employees to enjoy. Polished shades of grey and white conquered the venue with the mild touch of walnut wood in various furniture pieces, the vibrant orange office desk partitions the sophistication of Calcutta marble for the entrance.

The exposed ceiling asserted and amplified the casual yet effortless to be reflected along with the vigorous tall glass partitions between offices.











**Project Year:** 2020

**Project Status:** Completed

**Project Location:** Amman, Jordan

**Area:** 1,500 sq.ft.

# Department of Antiquities















Each one of our team members are loyal to one another, work with each other and support each other to provide the best possible outcome for each project. we work together, we work for each other, we work by one another.

# Retail & Showrooms

Interior Design | Fit out | Construction



# Qabalan Office Building & Bakery

REVIVAL architecture and interior design team were commissioned to design and execute the Qabalan building facade, and the interior design of the bakery.

**Project Year:** 2020

**Project Status:** Opening

**Project Location:** Alyasamin, Amman





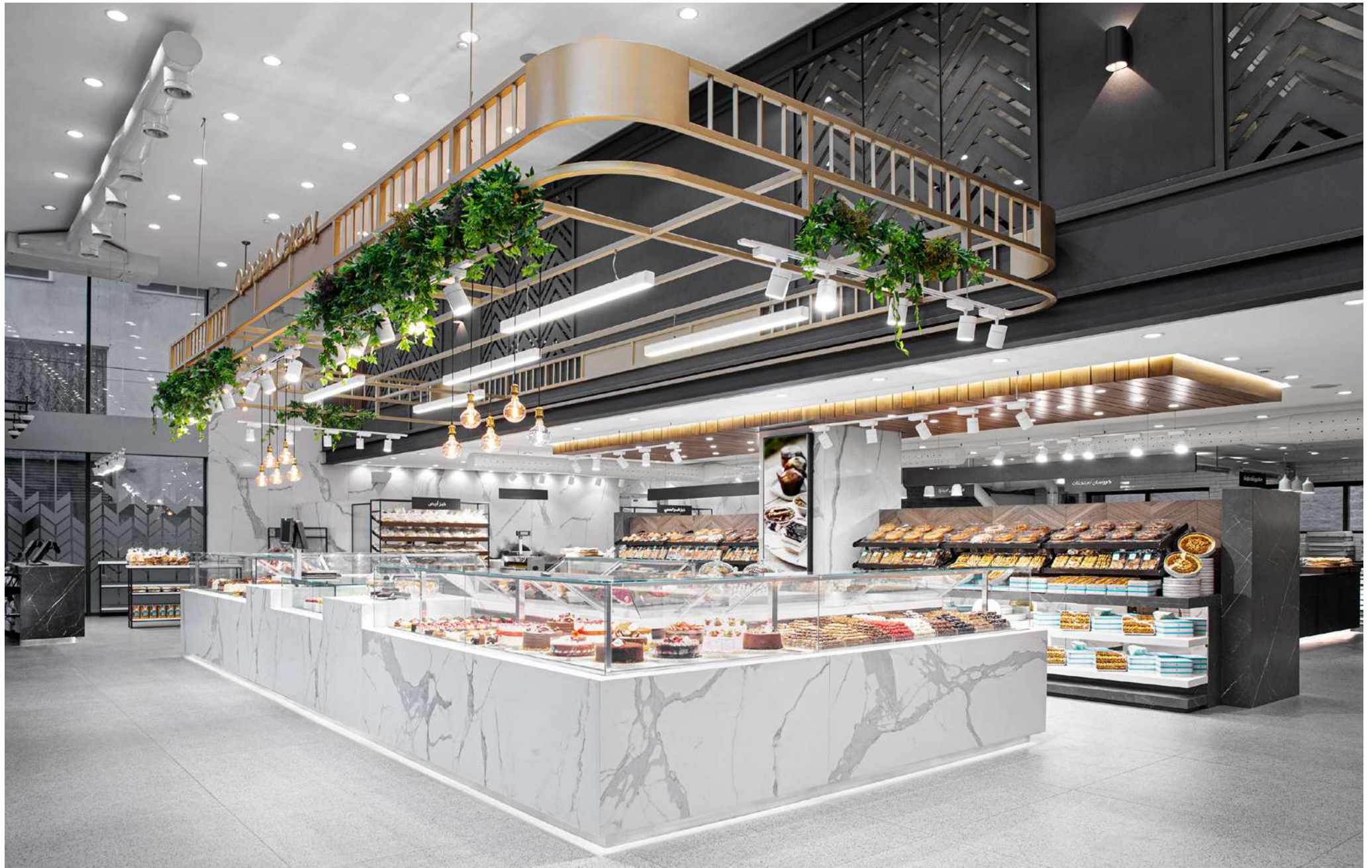




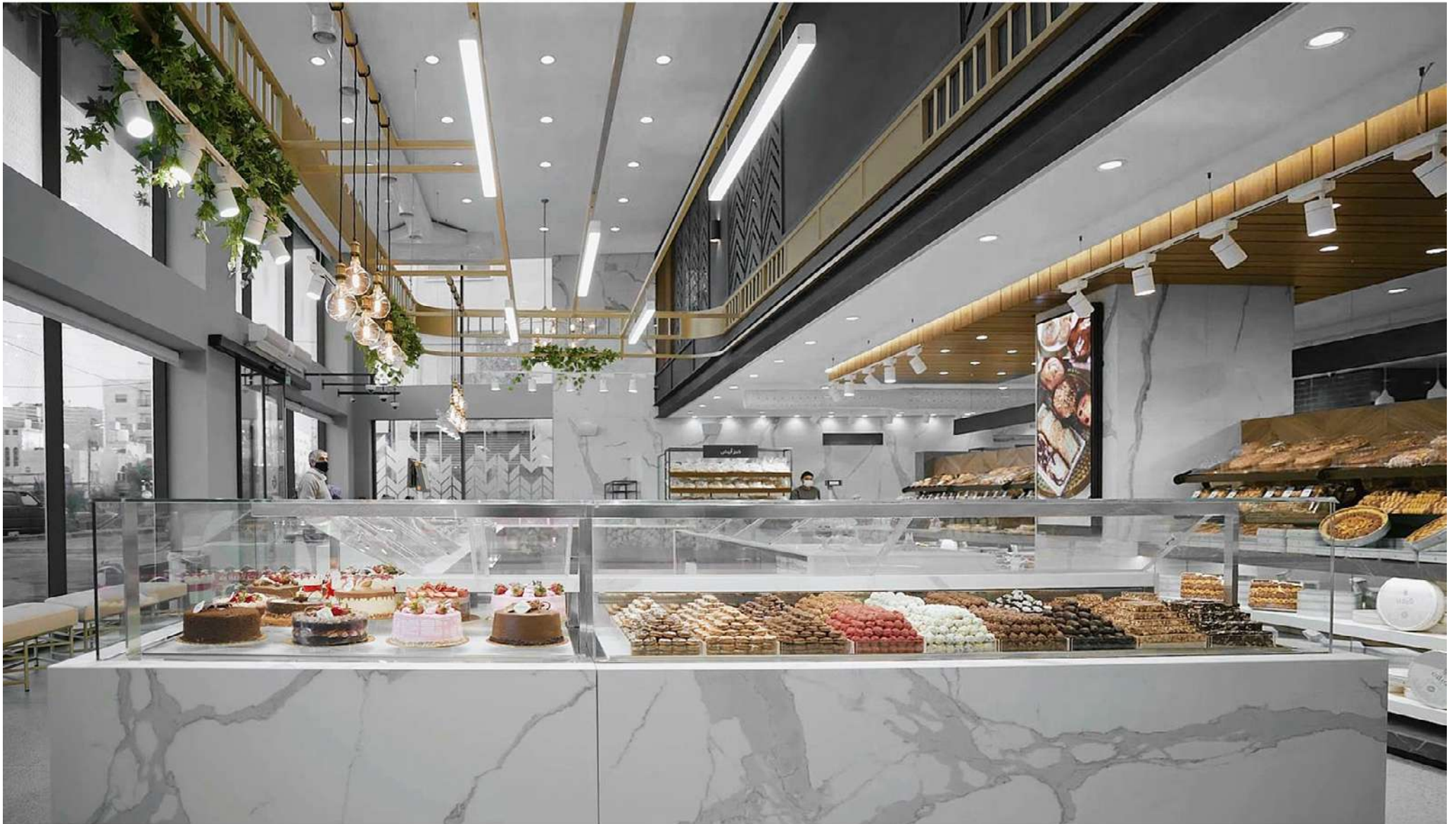




















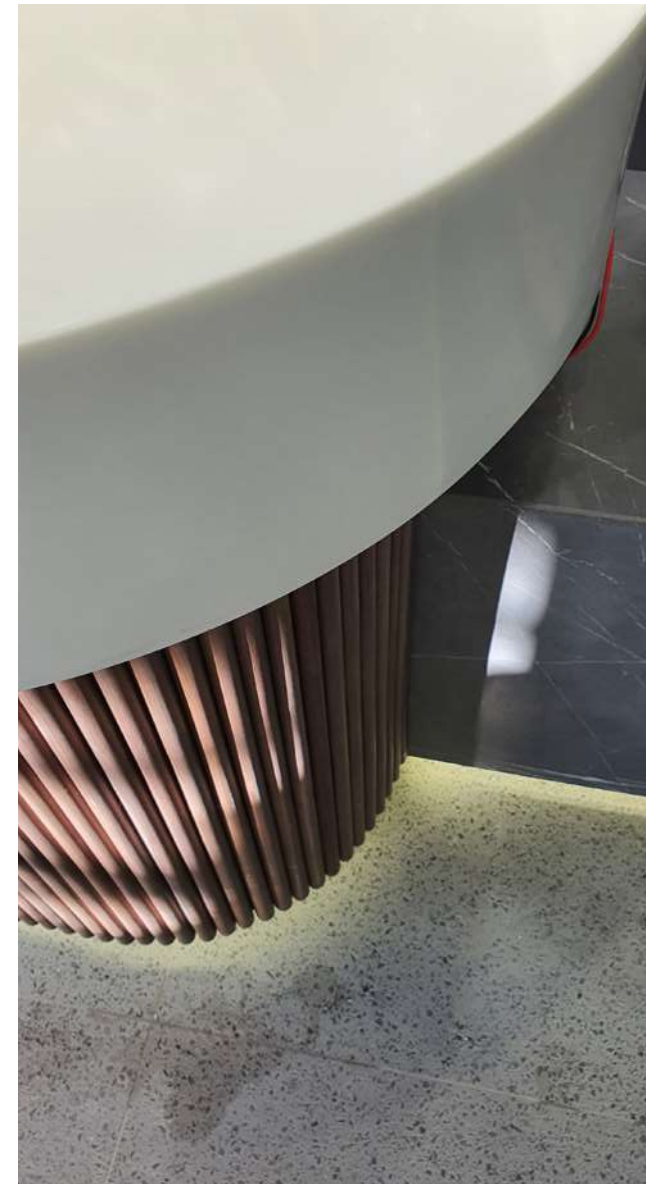


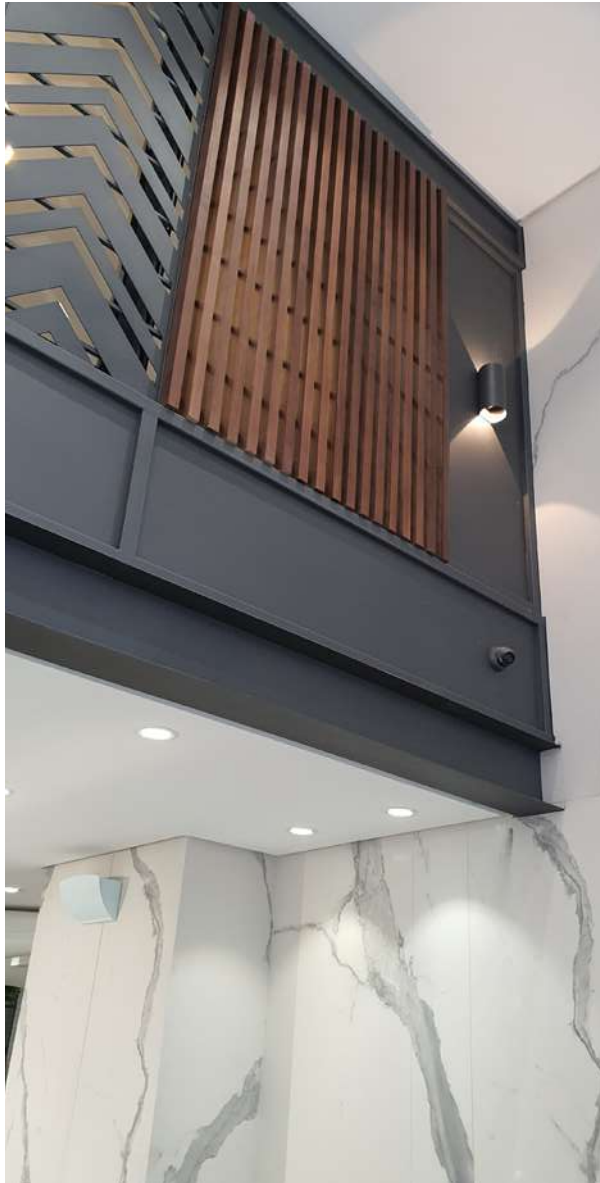








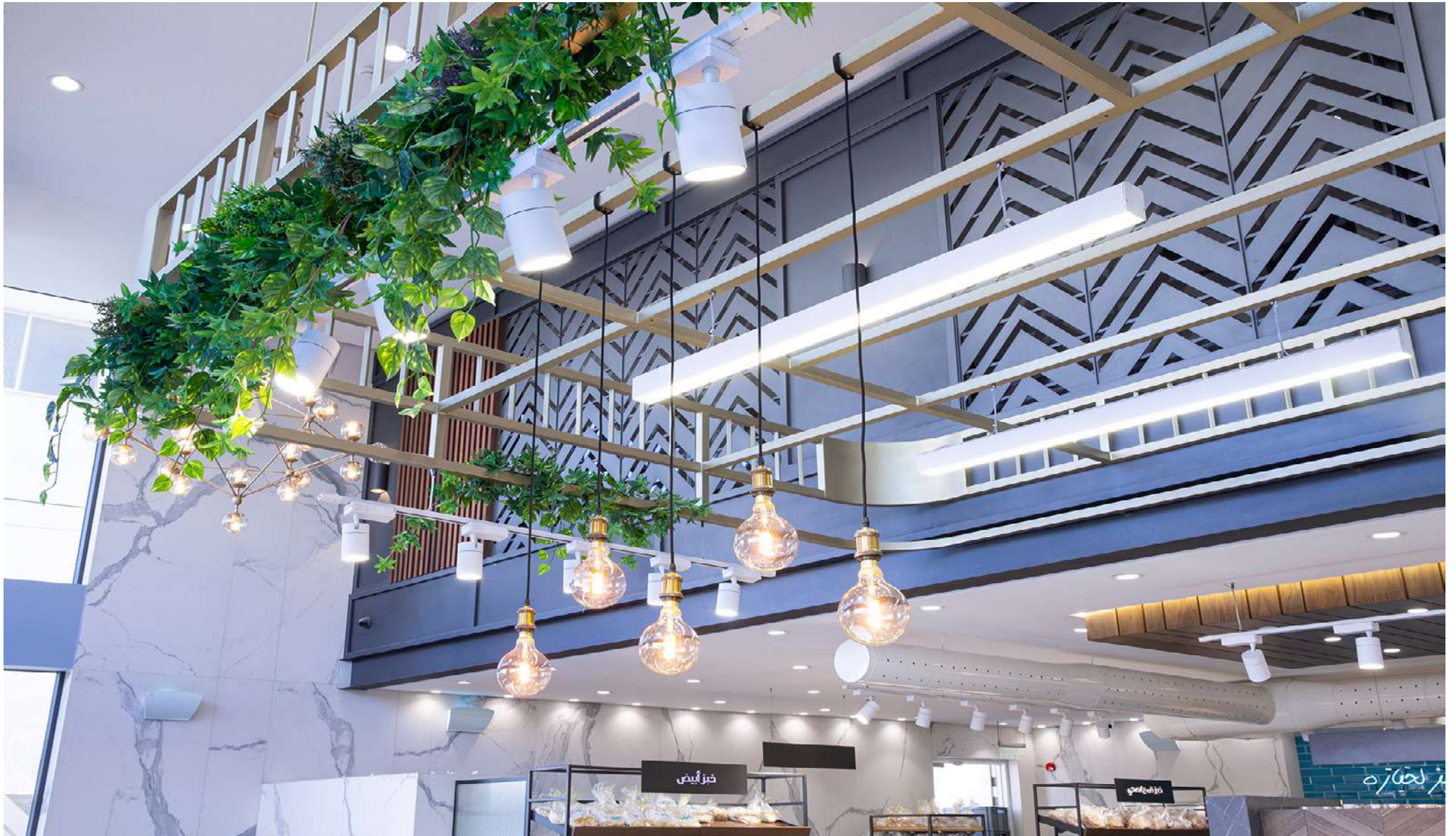








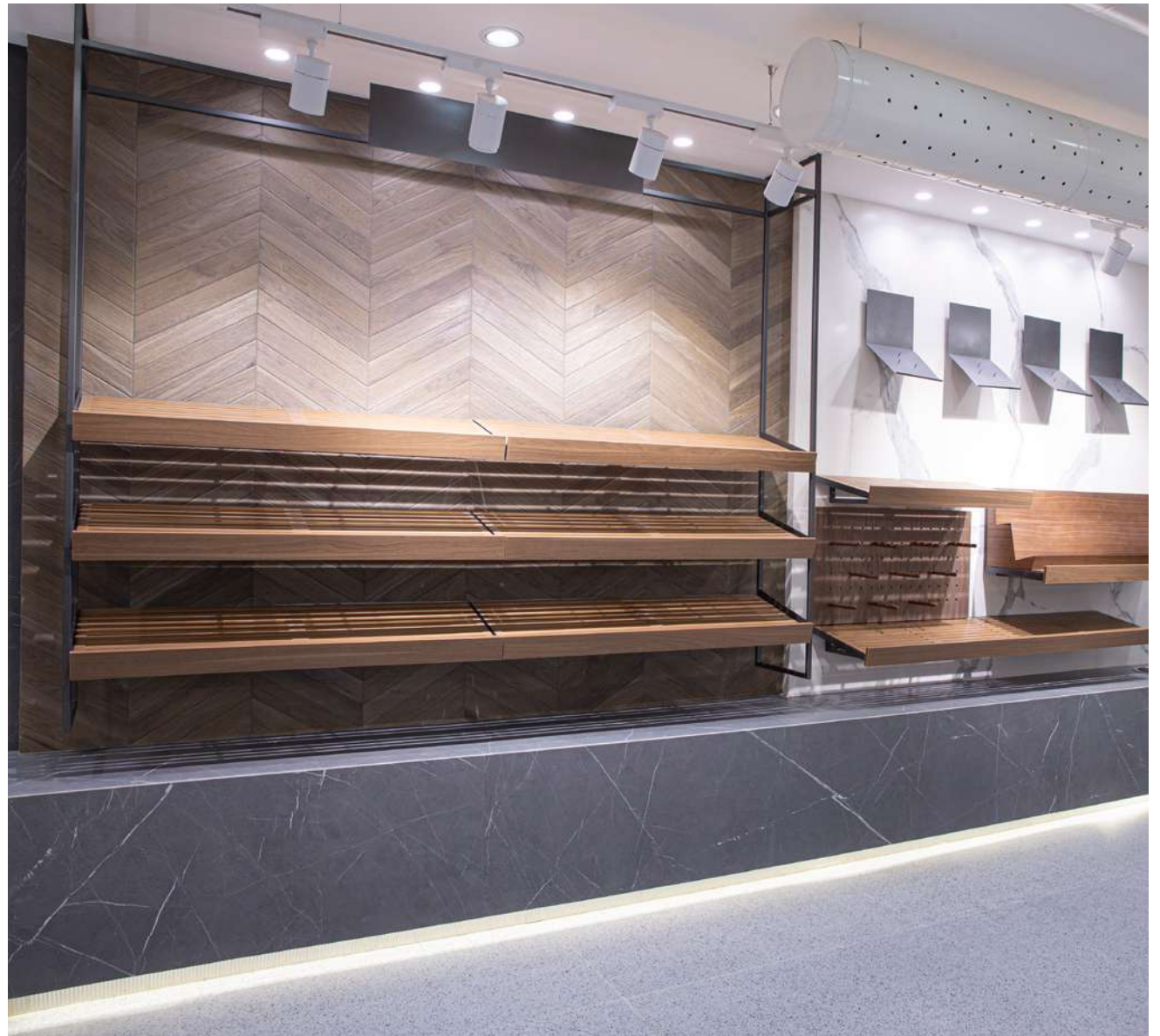














**Project Year:** 2017

---

**Project Status:** Opening

---

**Project Location:** Khalda, Amman

---



## Izhiman Premier

Extended roots from the nineteenth century and Jerusalem's heritage were met in Bab Al-Amud when the first store established under izhiman family based brand. It was a pioneer project in the field of coffee making shop as it was the first shop in Jerusalem then. Our concern is always to be distinguished by choosing the best sources green coffee and using best methods of preparation, and follow up the most recent techniques and technologies.

The Design was meant to evoke a certain luxurious yet modern feel to the venue through the use of rich materials such as Walnut Wood, Calcutta Marble, and Red Copper. As well as featuring modern geometric-like lighting elements that would create a signature piece to the double volumed entrance and further give the thrilling feel of the mix between luxury & modernism.



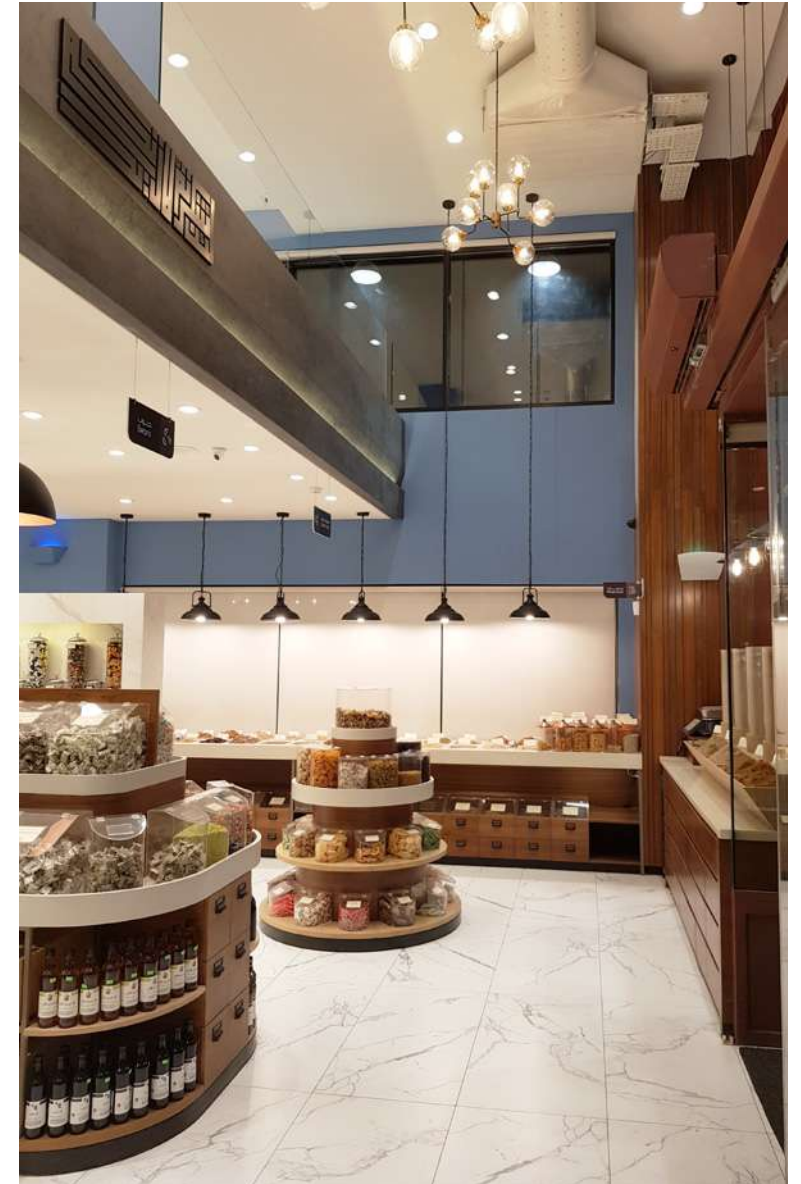












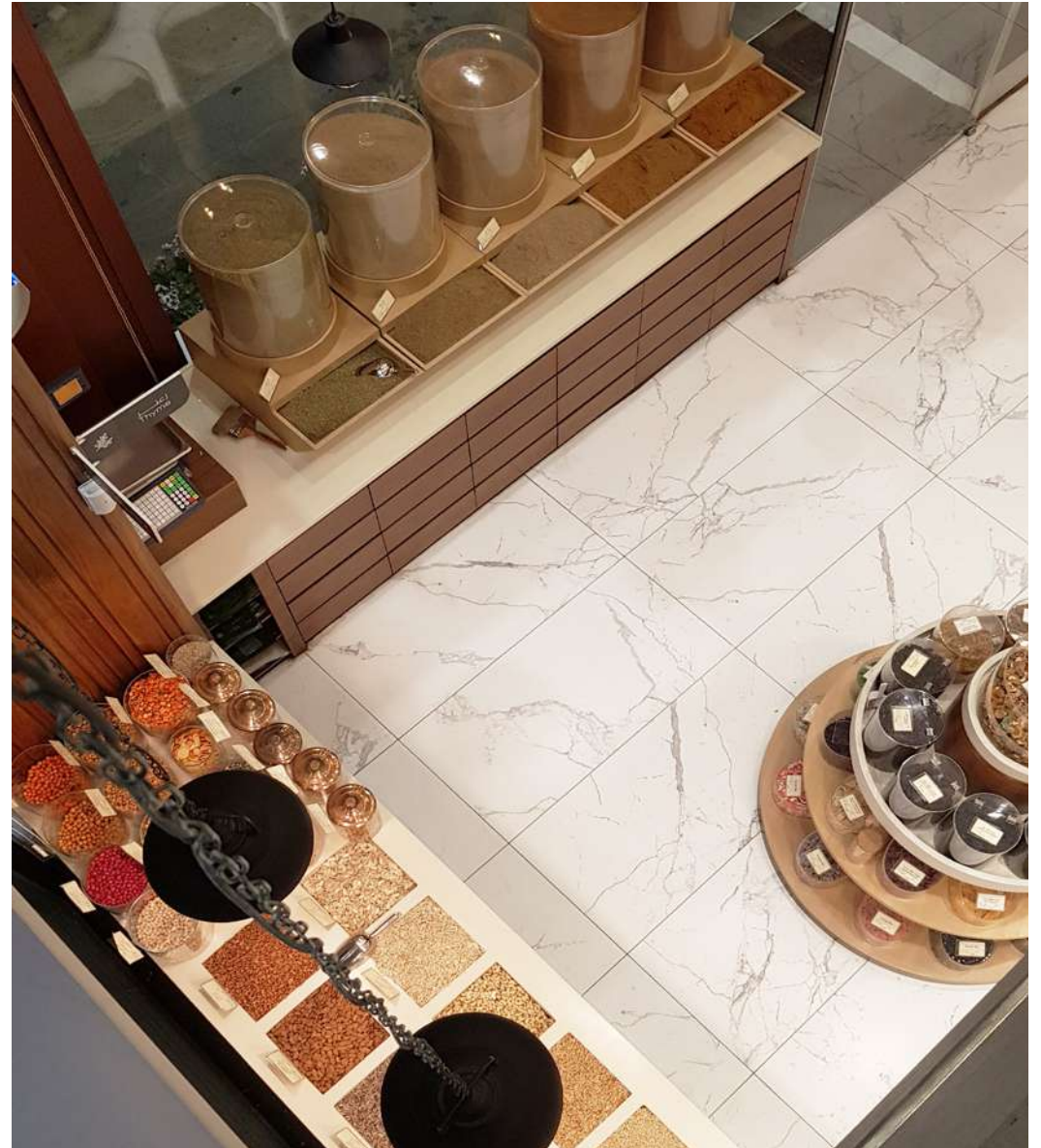




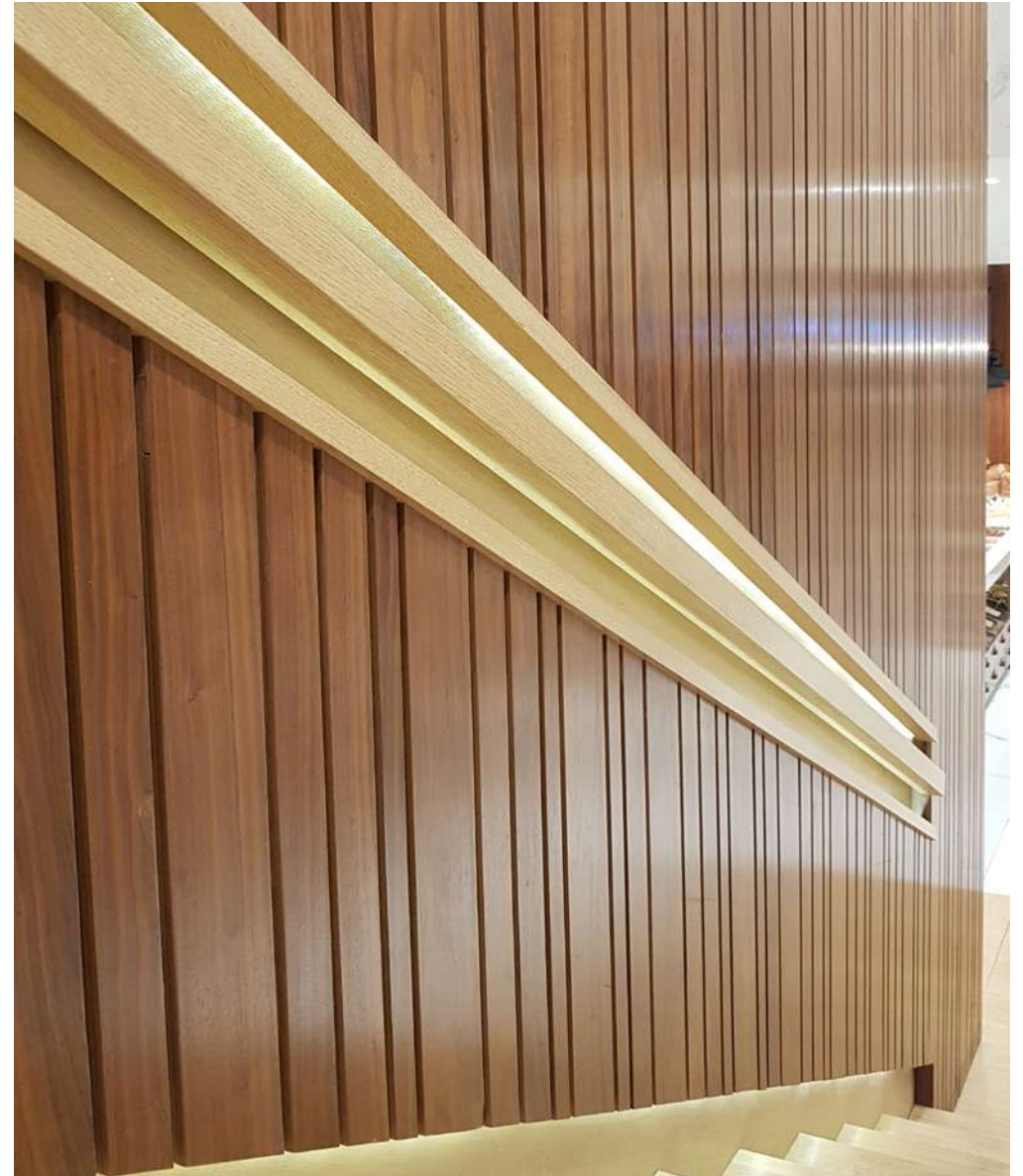




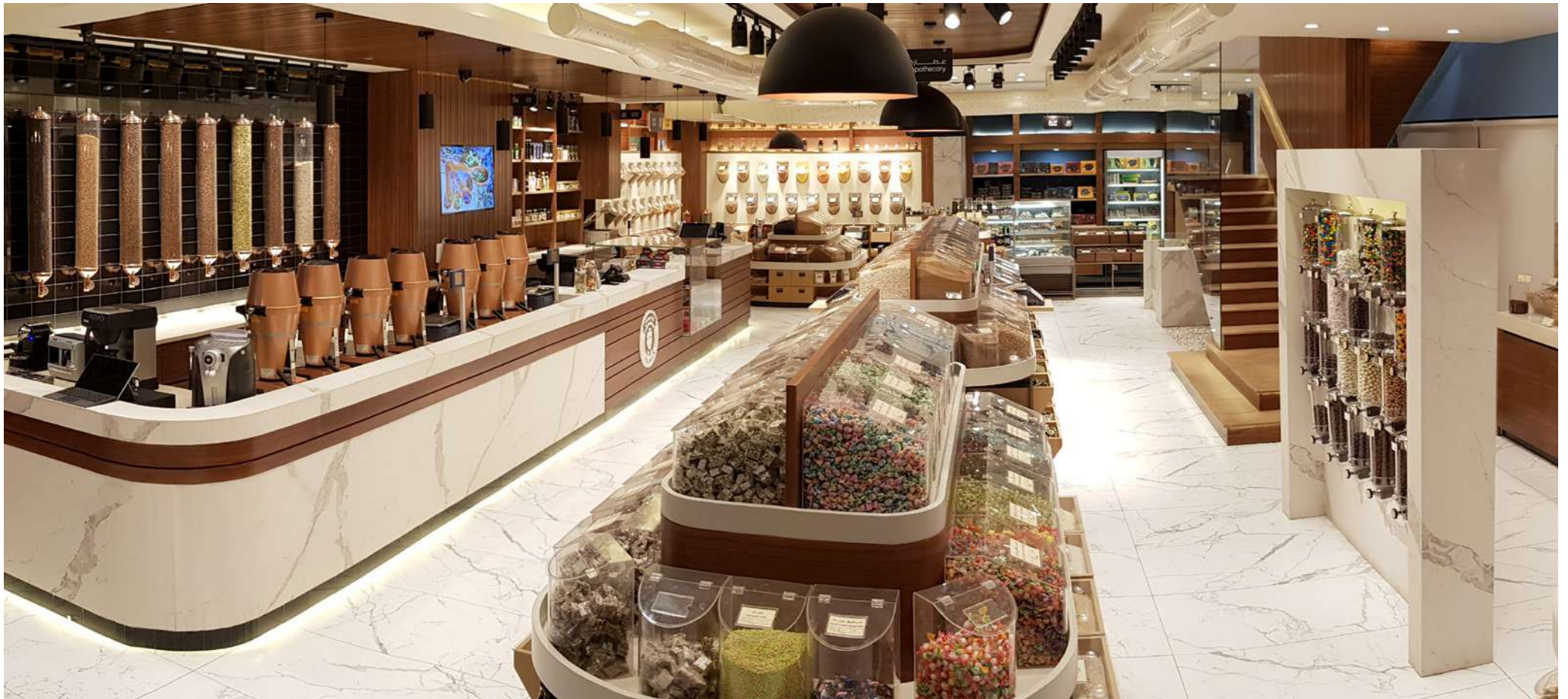
































**Project Year:** 2017

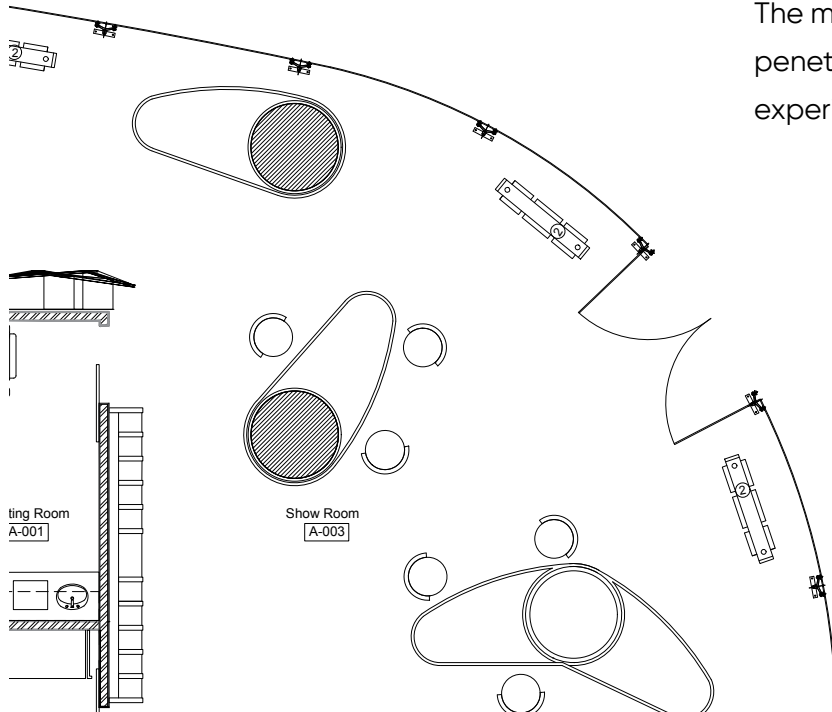
**Project Status:** Opening Soon

**Project Location:** Abdali Mall, Amman

# Opty Sport

The process began with selecting the right theme for the store's new location at Abdali Mall. We were inspired by the modern design of the Abdali Mall and tried to synergize between the modernity of the mall and Opty Sport's identity. The curves, colors, lighting, and materials were the main elements used to create the new Opty Experience. White polyster painted cabinets, glacier white corian solid surface with brushed stainless steel at some walls contradicts glossy stainless steel on the opposite walls.

The middle of the ceiling design featured double layers of oval shape plexiglass dropped with light penetrating from the ceiling. The existing two cylindrical columns were utilized as part of the store experience as oval display units. Stay tuned with more details as we will start the construction soon.

















**Project Year:** 2012

---

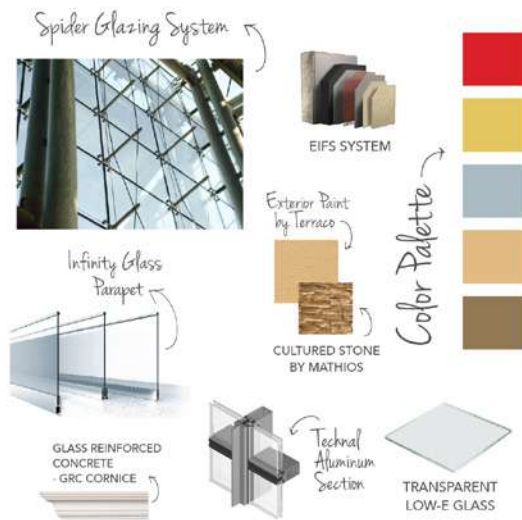
**Project Status:** Opening

---

**Project Location:** Al-Madina Al-Munawara St, Amman

## Ashley Furniture

With Ashley Furniture, the idea was to reinvent the facade in such a way that signalizes the building and creates a focal focus on it. We constructed an inviting attractive elevation with a new Broad glass facade and an American twist of bright red customized sun shading, a Terraco exterior insulation and finish system as well as lit acrylic sign. The transformation with these small details brought life to the building and characterized it as well as made it clear for the passers to notice and grasp on the strong concept that was reflected.





# Restaurants & Cafés

Interior Design | Fit out | Construction

**Project Year:** 2017

---

**Project Status:** Opening

---

**Project Location:** Abdoun, Rainbow St., Amman

**A**

# Steakanji Restaurant

Iconic bright red is what identifies and further marks the exterior from its surrounding. The contrast between the industrial interior and signature exterior provides an exciting experience for the users. Customized wooden stools and solid wood tables were used to embellish the outside as well as porcelain Grey tiles to sooth the setting.

The interior identity asserted the exterior with authentic vintaged porcelain tiles, brick wall, leather benches and tire like decorative lights with the “EAT” sign lit as a major statement identity piece.













**Project Year:** 2017

---

**Project Status:** Opening

---

**Project Location:** Taj Mall, Amman

# Black Rock Steakhouse

With Black Rock steakhouse we have put together a new interior concept that focuses on its key product and the experience provided as well as reflect the premium quality that the restaurant serves.

The goal was to provide a qualitative and earthy feel through using OSB Wood and parquet flooring. Parallel to the entrance, is the salad bar a fresh and light appearance which is introduced by a dialogue of wooden tables and iconic bright yellow Tolix A Chairs on one side and a balanced black leathered banquette seating arrangements on the other side. The use of the Zinko Metal touches around the venue gave it an industrial look in a vivid colorful way and was enhanced with the original picture frames and wall writings.



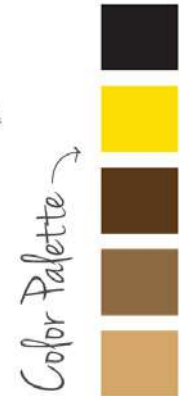






## Concept

The goal was to provide a qualitative and earthy feel through using OSB Wood and parquet flooring. Parallel to the entrance, is the salad bar a fresh and light appearance which is introduced by a dialogue of wooden tables and iconic bright yellow Tolix A Chairs on one side and a balanced black leathered banquette seating arrangements on the other side. The use of the Corrugated Metal touches around the venue gave it an industrial look in a vivid colorful way and was enhanced with the original picture frames and wall writings.





**Project Year:** From 2010–2016

---

**Project Status:** Opening

---

**Project Location:** Amman, Dubai, Riyadh

# Al Dayaa Restaurant

The concept was to create your casual next door shawerma place with a colorful twist. The main materials used were cherry wood as well as bright green & orange to bring life and vividness to the venue. Bright 'Fontana Arte' lighting elements, corian glossy countertops, and delicious shawarma best describe the project.

In Addition to the sketchy wallpapers that symbolized the delicious experience that the user was about to go through. The concept was further asserted with the parallel table lines with Tolix A orange chairs and Emeco Green ones as for the benches, they were of green tweed fabric and helped create the casual look we were seeking.







**Project Year:** 2010–2017

---

**Project Status:** Opening

---

**Project Location:** Multiple Locations

# Lebnani Snack Restaurant

Vivid red and green is what shapes Lebnani Snack and distinguishes its interior. The idea was to create a contrast between the interior minimal white atmosphere and the chromatic bright exterior. The colors used helped reflect the delicious, colorful flavors that Lebnani Snacks represents. Red Tolix A chairs and white tables, Teak Wood touches in various spots as well as colorful wallpapers that were in contrast with the grey ceramic tiles and the double volume provided a coherent encouraging atmosphere.

As for Lebnani Snack that is located in the food court, the bright red and green stood out in the food court to become the destination for all consumers, with its colorful wallpapers and glossy white countertops as well as its led lit logo.











**Project Year:** 2016

---

**Project Status:** Opening

---

**Project Location:** Zarqa, Jordan

# Cannella Café

The concept was gradually revealed in the selective materials used and the overall warm yet easeful atmosphere, with Cannella we targeted the people as we wanted to change their perception through designing a smoke free, minimal environment. The contrast between the industrial feel of brick and concrete and urbanity of the Teak Wood forged an effortless spontaneous aura.

Cannella's concept was first of its kind in the area of Zarqa which provided the premium coffee house experience in an industrial minimal look. The large intrusive windows floods the venue with natural daylight making it the perfect gathering for friends to enjoy their coffee time as well as the exposed ceiling that provided the informal feel with the industrial pendants. The character of the place is amplified with the authentic Arabian tiling and the brown leather seating arrangement.







**Project Year:** 2019

**Project Status:** Opening

**Project Location:** Amman, Jordan

## Dar Al-Handasah Booth







REVIVAL gathered Jordan's most talented architects and engineers to put together a team of professional, accountable, creative team. We work with each other, we work with one another and we



# Villas & Hotels

Interior Design | Fit out | Construction

**Project Year:** 2017

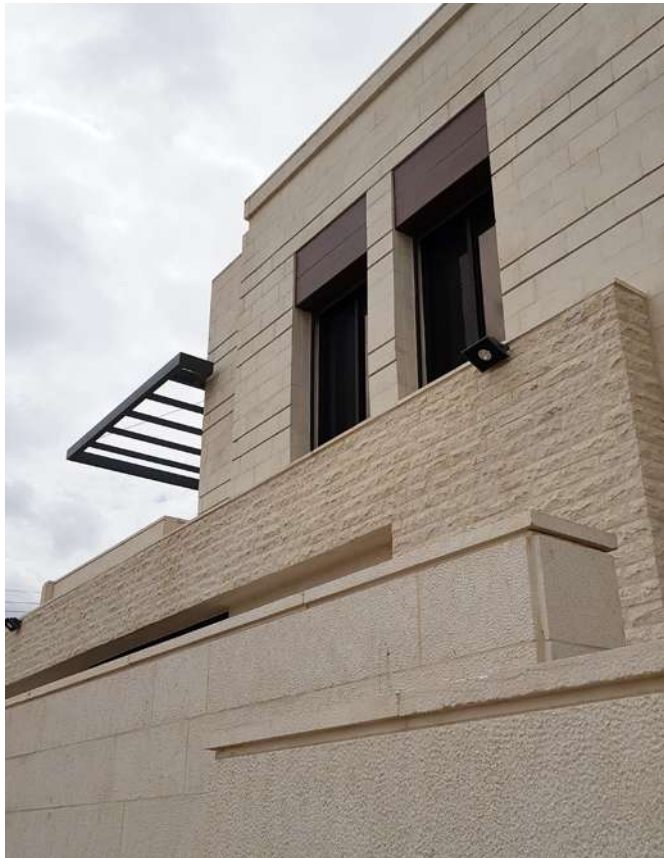
**Project Status:** Under Construction

**Project Location:** Al Karama, Amman

# Villa Samara

With Samara Villa, the goal was to create an iconic living space with focusing on several main materials such as nero marquina marble, walnut wood and shades of brass that created a luxurious premium identity for the villa and reflected a modern yet upscale interior with industrial touches around the villa.

The blue furniture and signature chandeliers complement the interior and establishes the color palette for it. The fireplace in the living space aims to semi separate it in delicate matter and creates a designated mark for it. Abstract paintings amplify the modish feel and decorate the interior. The villa reflects a coherent character in every corner and creates an identification and selfhood for its owners.









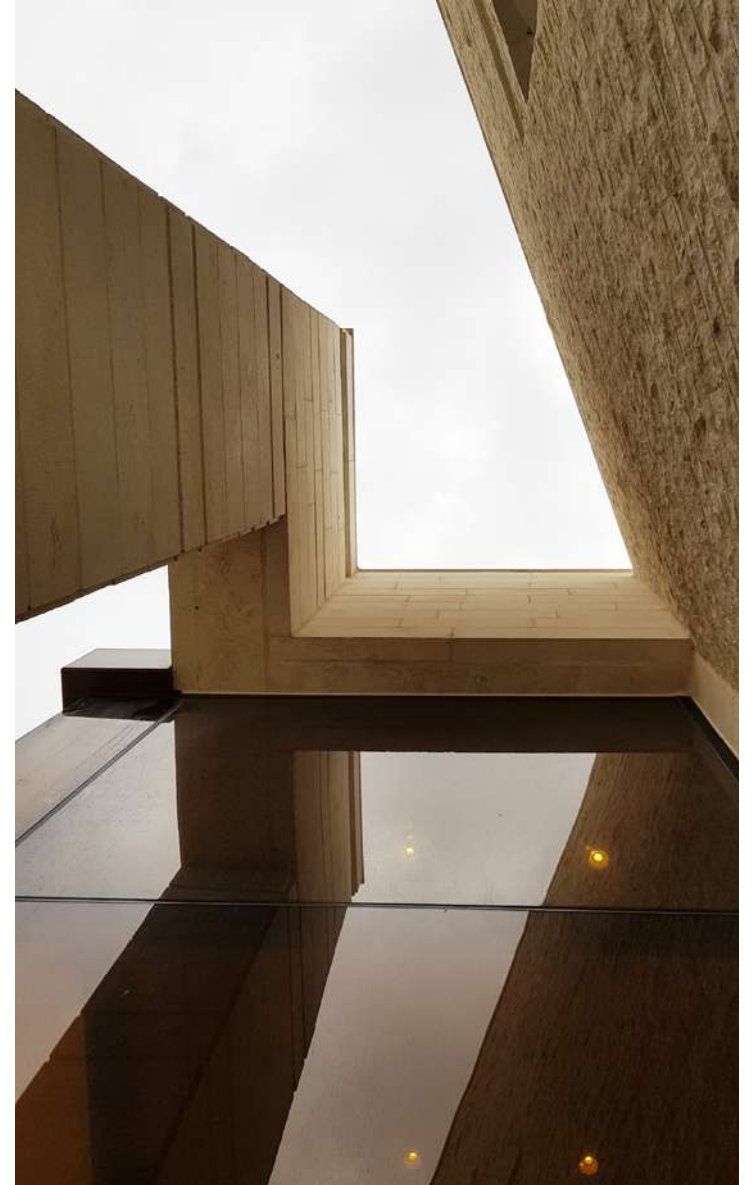














**Project Year:** 2015

---

**Project Status:** Completed

---

**Project Location:** South Shouna

# Salameh Residence





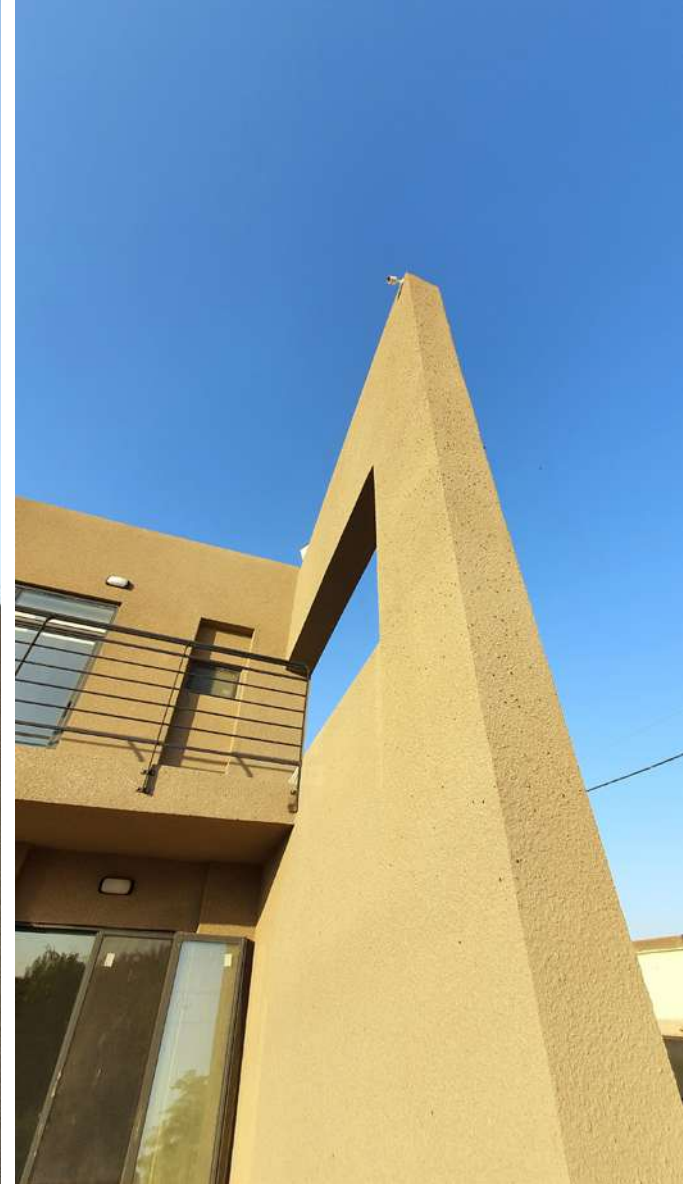




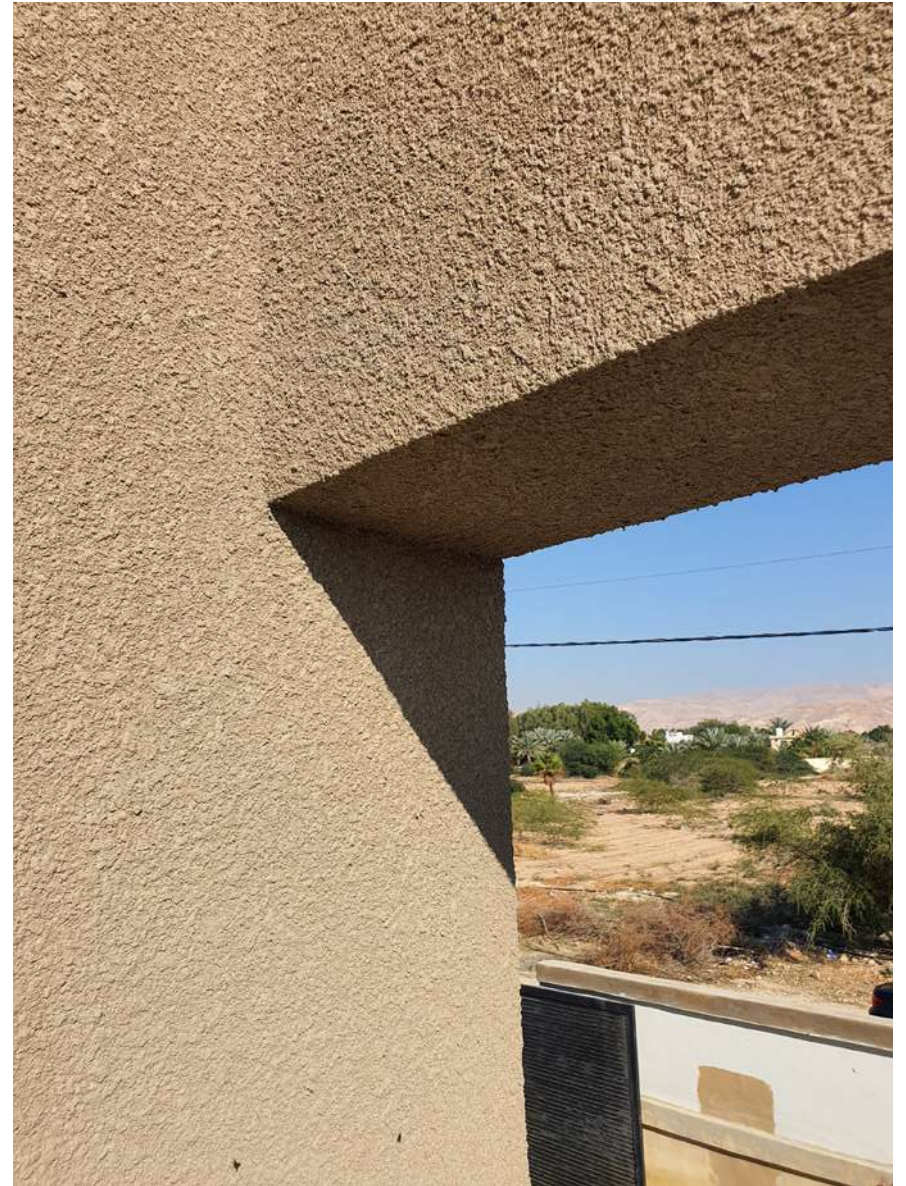












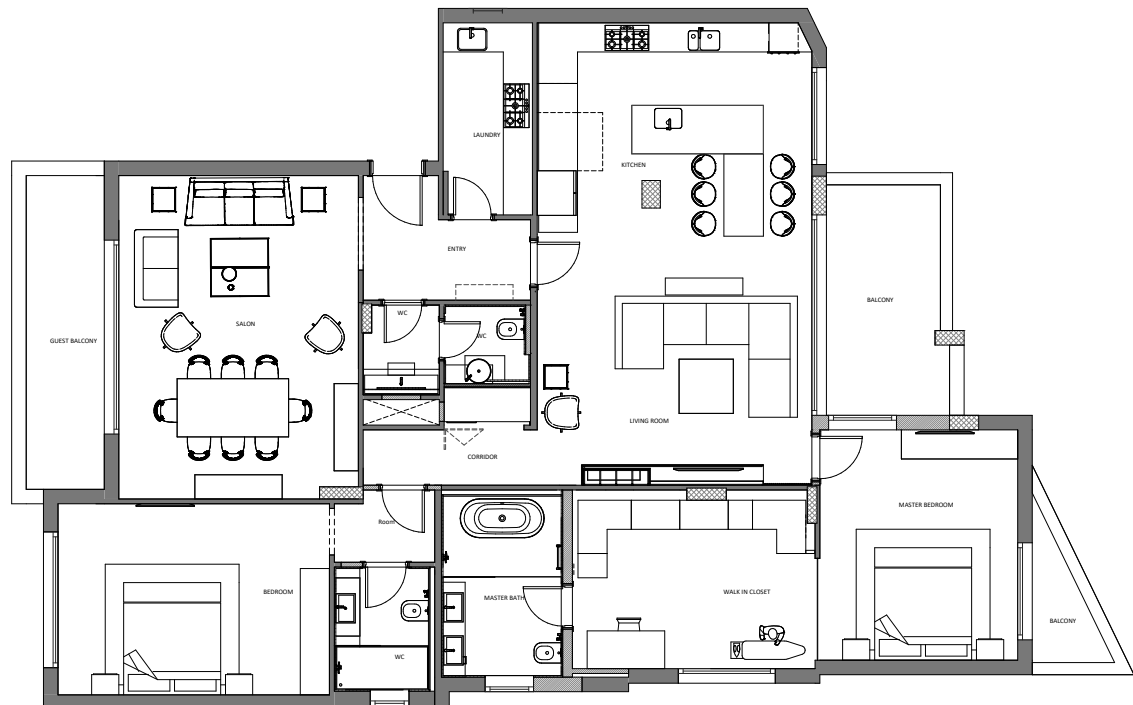
**Project Year:** 2021

**Project Status:** Under Construction

**Project Location:** Abdoun , Amman

# Abdoun Residence

An apartment in Abdoun. With a total area of 280 Sqm.  
Expected completion 2021.















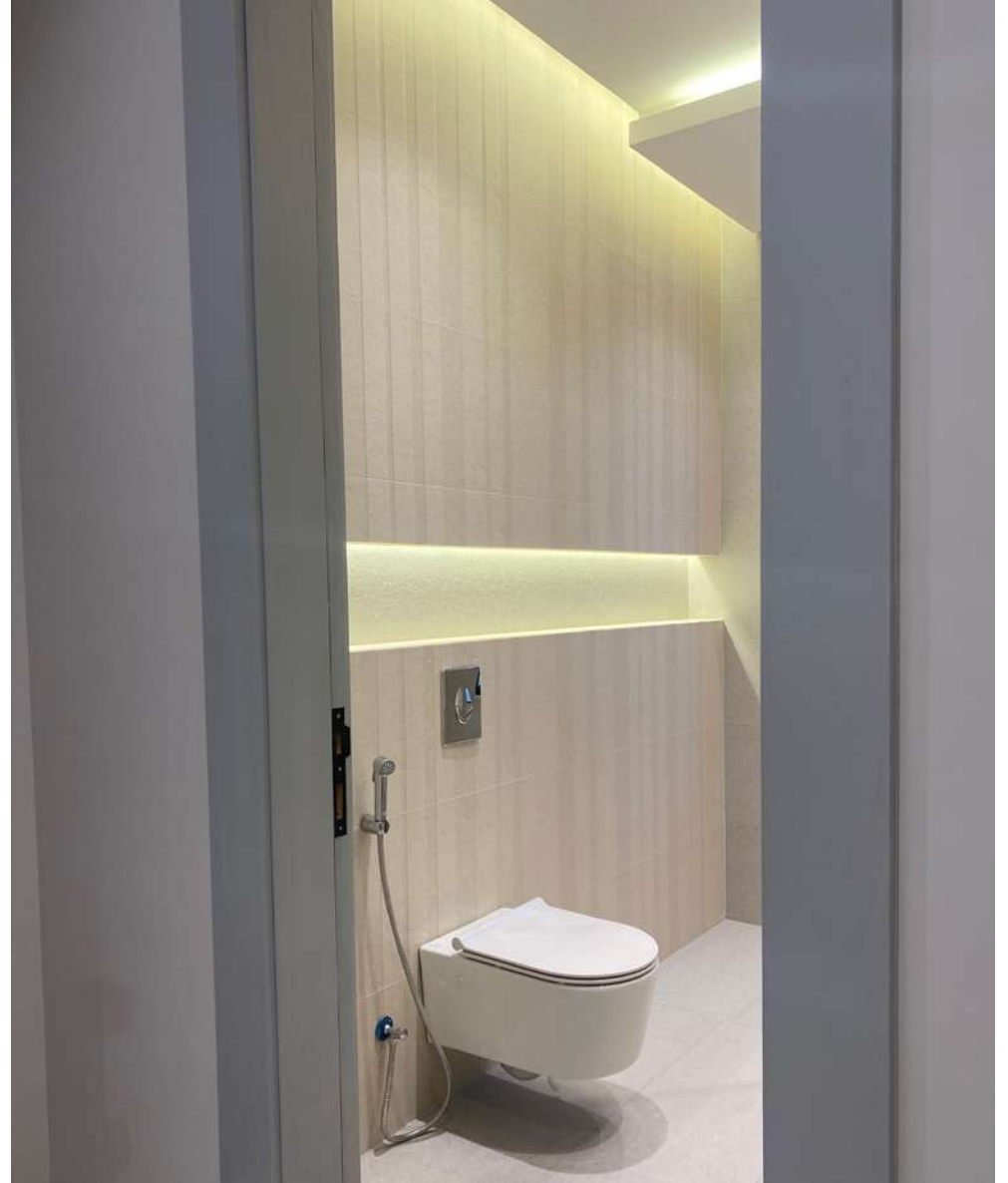














Our client satisfaction is very important to us which is why we put great efforts into meeting their needs and requirements and collaborating together on making the design completely customized to their essentials and priorities.

REVIVAL CONTRACTING COMPANY  
P.O.Box 1489 Amman 11118 Jordan  
Tel.: +962 64644141  
Mob.: +962 79 645 6115  
@ f Revival Contracting Company - RCC  
[www.revivalcontracting.co](http://www.revivalcontracting.co)