



**DYNAMIC MARINE VESSEL PROFILING REPORT**

**SAMPLE**

## CUSTOMER DETAILS

Name	Peter Smith		
Address	112 West Point dr	Street	
	Parnell	Suburb	
	Auckland	City	
	2957	Post code	

Date	31/05/2021
------	------------

Phone	
Mobile	021 555 293
Email	<a href="mailto:peter@unknownaddress.co.nz">peter@unknownaddress.co.nz</a>

## VESSEL DETAILS

Boat Name	Viking
-----------	--------

Location	Westhaven
----------	-----------

Berth	A22
-------	-----

Vessel Type	Launch/Power-Boat
-------------	-------------------

LOA	12.2M
-----	-------

Beam	3.7M
------	------

Draft	1.3M
-------	------

Model	Marex 375
-------	-----------

Construction Type	Fibreglass
-------------------	------------

Manufacturer/Builder	Marex Boats Norway
----------------------	--------------------

Build Number/ID	LT-MAR 12040E020
-----------------	------------------

Max Speed	21-22Kts
-----------	----------

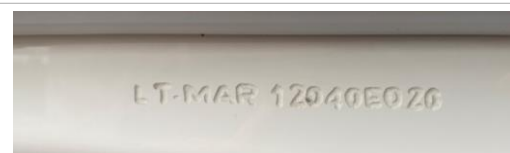
Cruise Speed	16-17Kts
--------------	----------

Displacement	7000KG
--------------	--------



### Additional Information

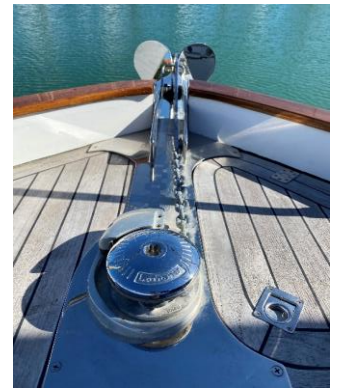
Year of Manufacture 2020: Build Plate # LT-MAR 12040E020





## External Equipment

<b>Anchor Winch</b>			
<b>Make/Brand</b>	Lofrans	<b>Voltage/Protection</b>	12V 100A-CB
<b>Model</b>	Project	<b>Rope/Chain Details</b>	8mm Galvanised chain only
<b>Part Number</b>	X2	<b>Gypsy Details</b>	Model 08101
		<b>Anchor Details</b>	Stainless Plow - Unknown brand
<p>Anchor winch is controlled from the helm with Lofrans Iris control which also includes a chain counter. Chain measures 8mm link diameter, 39mm outside length, 25mm pitch Anchor is connected with Marine Town stainless swivel.</p>			



<b>Anchor Winch Solenoid</b>		<b>Anchor Winch Control</b>	
<b>Make/Brand</b>	Lofrans	<b>Make/Brand</b>	Lofrans
<b>Model</b>	3T 12V	<b>Model</b>	Iris 103
<b>Part Number</b>	60018	<b>Part Number</b>	60017
<p>Solenoid is a standard 3-wire reversing type. Located in the anchor locker. Helm control operates the up/down winch functions and includes a rode counter.</p>			



<b>Bow Thruster</b>			
<b>Make/Brand</b>	Max Power	<b>Voltage/Protection</b>	12V 250A-Fuse
<b>Model</b>	CT45	<b>Prop Details</b>	Twin
<b>Part Number</b>	317603	<b>Anode Details</b>	N/A Composite Leg
<p>Bow and Stern Thruster run from dual Joystick at the helm. Powered from its own battery. Fuse and battery located under fwd. berth.</p>			



<b>Stern Thruster</b>			
<b>Make/Brand</b>	Max Power	<b>Voltage/Protection</b>	12V 250A-Fuse
<b>Model</b>	CT45	<b>Prop Details</b>	Twin
<b>Part Number</b>	317603	<b>Anode Details</b>	N/A Composite Leg
<p>Bow and Stern Thruster run from dual Joystick at the helm. Powered from its own battery. Fuse and battery located in lazarette, port side.</p>			





**External Equipment - cont.**

<b>Trim Tabs</b>			
<b>Make/Brand</b>	Lenco	<b>Voltage/Protection</b>	12V 25A-CB
<b>Model</b>	Standard	<b>Electric/Hydraulic</b>	Electric
<b>Part Number</b>	30072-001		
Standard electric rams running to control box mounted in electrical cupboard. Control is activated when engine ignition is turned on. Control also provides tab position and auto tab retraction when powered off.			



<b>Wiper System</b>			
<b>Make/Brand</b>	White Elephant	<b>Voltage/Protection</b>	12V 10A-CB x 2 (Port/Stbd)
<b>Model</b>	WE1333B	<b>Blade Length</b>	500mm
<b>Part Number</b>	WE1333B	<b>Arm Type/Length</b>	Pantograph 500mm adjustable
<b>Number of Motors</b>	2	<b>Functions</b>	On/Off/Washer
Twin motors run from separate circuit breakers. Controlled using push button switches and the helm. Washer also controlled from push button switch. Motors are single speed only.			



<b>Horn</b>			
<b>Make/Brand</b>	Syuanen	<b>Voltage/Protection</b>	12V 10A-CB
<b>Model</b>	Single Trumpet	<b>Rating</b>	115 dB
<b>Part Number</b>	SN-410S	<b>Location</b>	Main cabin roof
Single trumpet stainless steel horn mounted on the cabin roof top. Operated from single push button switch on helm.			



<b>Sunroof</b>			
<b>Make/Brand</b>	Webasto	<b>Voltage/Protection</b>	12V 10A-CB
<b>Model</b>	BlueSky		
<b>Serial Number</b>	8050366		
Operated via rocker switch at the helm or via switch mounted on the unit.			





## Pumping Systems

Fresh Water Pump			
Make/Brand	Jabsco	Voltage/Protection	12V 15A-CB
Model	Par-Max 4	Flow Rate	16.3LPM (4.3GPM)
Part Number	31620-0292	Pressure Rating	25PSI
The Fresh Water pump system is setup as a twin pump redundancy system. 2 pumps plumbed into both the section and pressure lines with on/off valves. Electrical selection made from yellow/red selector switch with Pump 1 / Off / Pump 2 selection option.			



Grey Water Pump			
Make/Brand	TMC	Voltage/Protection	12V 25A-CB
Model	TMC-06205	Flow Rate	700 GPH (2646LPH)
Part Number	503-6207011	Pump Type	Macerator
		Location	Lazarette - Stbd side
The Waste/Black pump system is setup as a twin pump redundancy system. 2 pumps plumbed into both the section and discharge lines with Y-Valves to select inlet. Electrical selection made from yellow/red selector switch with Pump 1 / Off / Pump 2 selection option.			



Head/Toilet			
Make/Brand	TMC	Voltage/Protection	12V 25A-CB
Model	TMC-29931	Bowl Size	Large
Part Number	9931041200		
Large bowl standard electric toilet controlled with momentary rocker switch located next to bowl. Black tank gauge also located next to bowl.			



Waste Discharge Pump			
Make/Brand	TMC	Voltage/Protection	12V 25A-CB
Model	TMC-620921	Flow Rate	20LPM
Part Number	503-6209021	Pump Type	Diaphragm
		Location	Lazarette - Stbd side
The Waste/Black pump system is setup as a twin pump redundancy system. 2 pumps plumbed into both the section and discharge lines with Y-Valves to select inlet. Electrical selection made from yellow/red selector switch with Pump 1 / Off / Pump 2 selection option.			

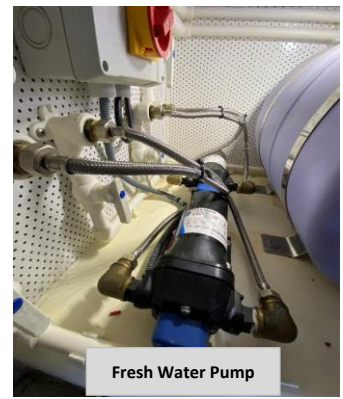
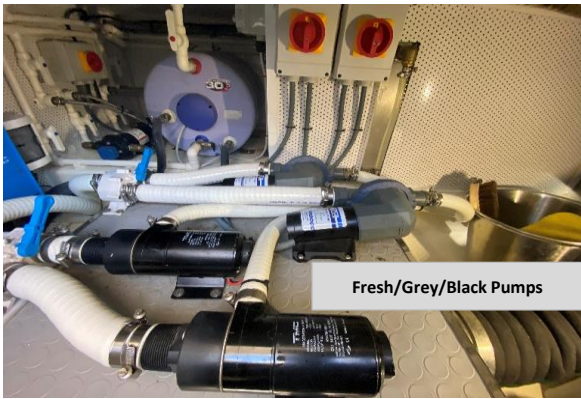






## Pumping Systems - cont.

<b>Shower sump box</b>			
<b>Make/Brand</b>	Rule	<b>Voltage/Protection</b>	12V 10A-CB
<b>Model</b>	Multi-Port Sump box	<b>Flow Rate</b>	800 GPH
<b>Part Number</b>	98B	<b>Pump Type</b>	Submersible
		<b>Location</b>	Under companionway stairs
Self contained grey water sump box. Has a submersible "bilge" pump with covered float type activation switch. Multi inlet ports.			





## Bilge Pump System

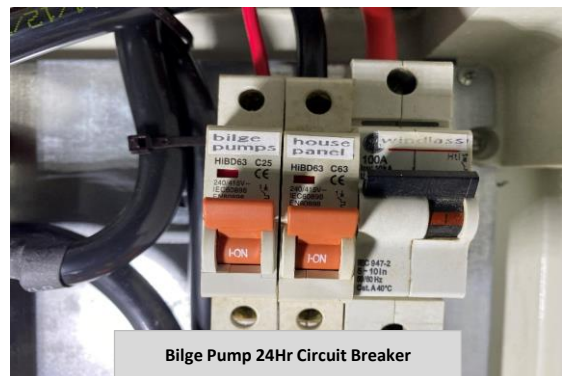
<b>Bilge Pump 1</b>			
<b>Make/Brand</b>	Rule	<b>Voltage/Protection</b>	12V 10-CB
<b>Model</b>	2000	<b>Flow Rate</b>	2000 GPH (126 LPM)
<b>Part Number</b>	10B	<b>Activation Switch</b>	Float - Rule 35A
		<b>Location</b>	Bow - Under Fwd. berth
Submersible pump with float switch. 24HR power supply from main breaker panel, Manual activation switches on the helm panel. discharge lines are fitted with Jabsco non-return valves.			



<b>Bilge Pump 2</b>			
<b>Make/Brand</b>	Rule	<b>Voltage/Protection</b>	12V 10-CB
<b>Model</b>	2000	<b>Flow Rate</b>	2000 GPH (126 LPM)
<b>Part Number</b>	10B	<b>Activation Switch</b>	Float - Rule 35A
		<b>Location</b>	Engine room - Fwd. of Engine
Submersible pump with float switch. 24HR power supply from main breaker panel, Manual activation switches on the helm panel. discharge lines are fitted with Jabsco non-return valves.			



<b>Bilge Pump 3</b>			
<b>Make/Brand</b>	Rule	<b>Voltage/Protection</b>	12V 10-CB
<b>Model</b>	2000	<b>Flow Rate</b>	2000 GPH (126 LPM)
<b>Part Number</b>	10B	<b>Activation Switch</b>	Float - Rule 35A
		<b>Location</b>	Lazarette
Submersible pump with float switch. 24HR power supply from main breaker located in engine room electrical cabinet. Each Pump also has its own circuit breaker located on the main panel. Manual activation switches on the helm panel. discharge lines are fitted with Jabsco non-return valves.			





## Electronics

Multifunction Display or Chartplotter			
<b>Make/Brand</b>	Garmin	<b>Voltage/Protection</b>	12V 10A-CB
<b>Model</b>	GPSMAP 7612-Volvo	<b>Serial Number</b>	4AQ001255
<b>Part Number</b>	M4AUND00	<b>Software Version</b>	20.20
		<b>Chart Version</b>	NZ 2021.0 V22.50
<p>Twin 12inch MFD connected to the Volvo engine system.            Provides Charting and engine information including water and fuel tank levels.            Also has a Rudder Reference transducer connected.            No sounder or radar fitted.</p>			



Multifunction Display or Chartplotter			
<b>Make/Brand</b>	Garmin	<b>Voltage/Protection</b>	12V 10A-CB
<b>Model</b>	GPSMAP 7612-Volvo	<b>Serial Number</b>	4AQ001242
<b>Part Number</b>	M4AUND00	<b>Software Version</b>	20.20
		<b>Chart Version</b>	NZ 2021.0 V22.50
<p>Twin 12inch MFD connected to the Volvo engine system.            Provides Charting and engine information including water and fuel tank levels.            Also has a Rudder Reference transducer connected.            No sounder or radar fitted.</p>			



<b>Autopilot</b>	Vessel is not fitted with an autopilot
<b>VHF Radio</b>	Vessel is not fitted with a VHF radio

Stereo			
<b>Make/Brand</b>	Infinity	<b>Voltage/Protection</b>	12V 15A-CB
<b>Model</b>	PRV-515	<b>Functions</b>	Bluetooth/AM/FM/N2K
<b>Part Number</b>	KAPPRV515	<b>Speakers</b>	4 x 6Inch # 6MBLT
		<b>Zones</b>	Saloon/Cockpit
<p>Multi source head unit (No CD) with 2-Zone speaker control.</p>			



Helm



Garmin GPSMAP 7612 Software Info







## Mechanical - Engine

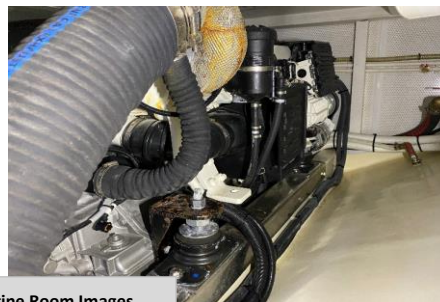
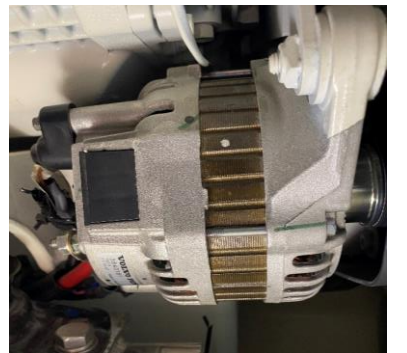
<b>Main Propulsion Engine</b>			
<b>Make/Brand</b>	Volvo Penta	<b>Rated Power</b>	320kW / 3500 RPM
<b>Model</b>	D6-435I-SC-F	<b>Drive Type</b>	Shaft-Straight
<b>Chassis ID</b>	VV 083049	<b>Intake Size</b>	2inch
<b>Serial Number</b>	A984334	<b>Intake Strainer</b>	Integrated Volvo Strainer
<p>Single Volvo engine with shaft drive. Volvo start/stop ignition panel and multi function lever control. engine instrumentation via twin Garmin displays.          Fuel filtration is located in the engine room.          2 x Main oil filters located on the engine, ref Volvo Penta # 22030848</p>			



<b>Gearbox</b>			
<b>Make/Brand</b>	Volvo Penta	<b>Ratio</b>	2.5
<b>Model</b>	HS85AE-A	<b>Serial Number</b>	20307812
<b>Part Number</b>	22775504	<b>Shaft Diameter</b>	50mm / 2inch
<p>Forward/Reverse gearbox attached to main engine.</p>			



<b>Alternator</b>			
<b>Make/Brand</b>	Volvo Penta/Mitsubishi	<b>Voltage</b>	12V
<b>Model</b>	3840181	<b>Amperage</b>	115A
<b>Part Number</b>	3840181	<b>Regulator</b>	Internal
<p>Alternator charging is split using 2 x Victron Argo Diode Isolators ( 1 Input, 2 Outputs (each) 120A)</p>			



Engine Room Images





### Mechanical - cont.

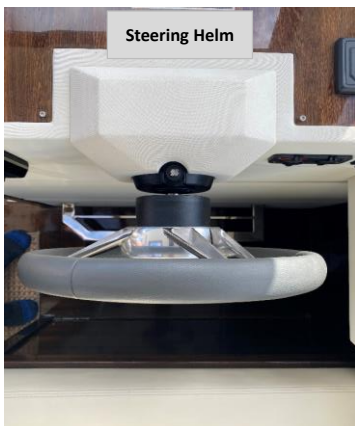
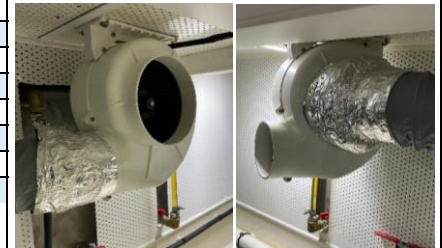
<b>Steering System</b>			
<b>Make/Brand</b>	Ultraflex		
<b>Steering Type</b>	Hydraulic	<b>Steering Stations</b>	One
	<b>Helm Unit</b>		<b>Cylinder/Cable</b>
<b>Model</b>	UP33F		UC215
<b>Part Number</b>	42456J		39433C
Single inboard hydraulic helm and cylinder, no autopilot fitted.			



<b>Generator</b>			
<b>Make/Brand</b>	VTE/Yanmar	<b>Output Rating</b>	4.5KW
<b>Model</b>	Paguro 4 SY	<b>RPM</b>	3000
<b>Part Number</b>	L70N5	<b>Fuel</b>	Diesel
Compact diesel generator with case type sound shield. Running Yanmar engine. Operated from the helm via remote panel. Has own water intake with strainer and separate fuel filter mounted on fwd. bulkhead in lazarette.			



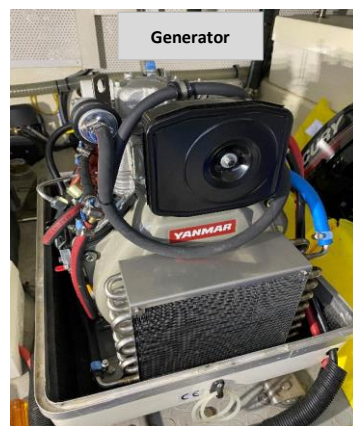
<b>Engine Blower x 2</b>			
<b>Make/Brand</b>	Matromarine	<b>Voltage/Protection</b>	12V 25A-CB
<b>Model</b>	Flex-Mount	<b>Rating</b>	750M <sup>3</sup> /Hr
<b>Part Number</b>	CD:5500102412		
The engine room is two blowers installed. The Stbd blower draws air into the engine room and the Port blower pushes air out of the engine room. Hose connections are 150mm on the inlet and 103 on the outlet.			



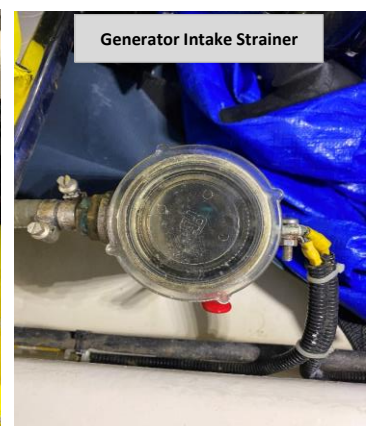
Steering Helm



Generator Fuel Filter



Generator



Generator Intake Strainer



## Air Conditioning

Air Conditioning - Fwd. Cabin			
Make/Brand	Webasto	Voltage/Protection	230V 25A-CB
Model	S8-R-230V-REV-R410A	Refrigerant	R410a
Part Number	WBCL120001D	Serial Number	T17S0827
		Capacity	8000 BTU/h
Compact compressor and air handler mounted under forward berth. Control mounted on the port side near AC outlet.			



Air Conditioning - Saloon			
Make/Brand	Webasto	Voltage/Protection	230V 25A-CB
Model	S8-R-230V-REV-R410A	Refrigerant	R410a
Part Number	WBCL120001D	Serial Number	T18S0008
		Capacity	8000 BTU/h
Compact compressor and air handler mounted under seating in the saloon. Control mounted on the stbd side near helm.			



Air Conditioning - Pump			
Make/Brand	Iwaki	Voltage/Protection	230V 25A-CB
Model	MD-70RM	Flow Rate	86/97 LPM
Part Number	MO51634919		
The Air Conditioning pump system is setup as a twin pump redundancy system. 2 pumps plumbed into both the section and pressure lines with on/off valves. Sea strainer is fitted to the suction line. Electrical selection made from yellow/red selector switch with Pump 1 / Off / Pump 2 selection option. Supplies both Air Conditioning units.			

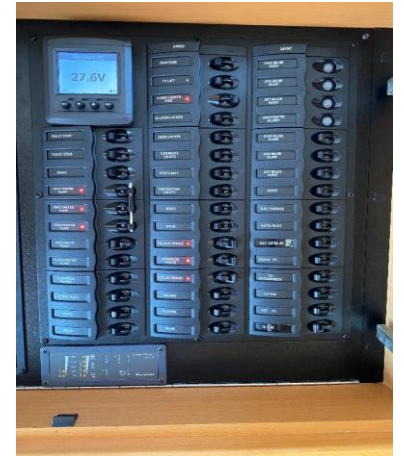




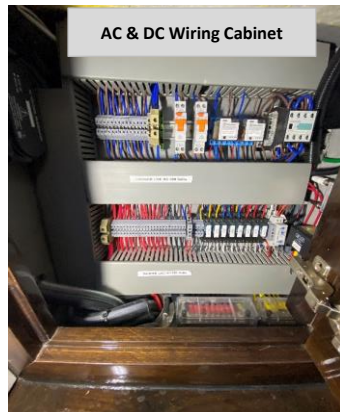


## Electrical - DC Distribution

Main Distribution Panel			
Make/Brand	BEP	Voltage	12VDC
Model	Millennium Series - 36		
Part Number	Custom - Clipper		
<p>The main DC panel is supplied from a circuit breaker in the engine room electrical cabinet.            DC circuit breakers for the vessels systems as listed below.            The panel also includes both the DC and AC monitoring panels.            The main house battery switch is a solenoid mounted in the engine room, this is controlled from the DC panel via the switch labelled (HOUSE SWITCH) control for the engine and generator batteries is also controlled this way.            DC shunt is mounted in the electrical wiring cupboard next to the helm.</p>			



Circuit Breaker Panel Layout					
FRONT CABIN LIGHTS	10A	STBD WIPER	10A	ENGINE BLOWER	25A
WC LIGHT	10A	PORT WIPER	10A	FRESH WATER PUMP	15A
SALOON LIGHT	10A	SEARCH LIGHT	10A	GREY WATER PUMP	25A
AFT DECK LIGHT	10A	HORN	10A	BLACK WATER PUMP	25A
ENGINE ROOM LIGHT	10A	TRIM TABS	25A	TOILET PUMP	25A
REFRIGERATOR	10A	MUSIC	15A	SHOWER PUMP	10A
NAVIGATION LIGHT	5A	VHF	10A	TV	10A
GAUGE LEVEL	5A	CHART PLOTTER	10A	CHAIN COUNTER	10A
SUNROOF	10A	INSTRUMENT LIGHT	5A	FRIDGE	15A
FWD BILGE PUMP	10A	MID BILGE PUMP	10A	FRONT BILGE PUMP	10A
SPARE	10A	SPARE	10A	HOUSE SWITCH	SWITCH
SPARE	10A	GENERATOR	SWITCH	ENGINE SWITCH	SWITCH







### Electrical - DC Batteries

<b>House Battery</b>			
<b>Make/Brand</b>	FIAMM	<b>Voltage</b>	12VDC
<b>Model</b>	Neptune MAR 650	<b>Battery Protection</b>	500A Fuse
<b>Capacity (Ah)</b>	180 x 3 (540Ah) Total	<b>Switch Location</b>	Main DC Panel
Remote battery switch with switch located on main DC panel and solenoid mounted in grey enclosure in the engine room.			



<b>Start Battery</b>			
<b>Make/Brand</b>	FIAMM	<b>Voltage</b>	12VDC
<b>Model</b>	Neptune MAR 650		
<b>Capacity (CCA)</b>	1000	<b>Switch Location</b>	Engine room
Remote battery switch with switch located on main DC panel and solenoid mounted in grey enclosure in the engine room.			



<b>Genset Battery</b>			
<b>Make/Brand</b>	Endurant	<b>Voltage</b>	12VDC
<b>Model</b>	Neptune		
<b>Capacity (CCA)</b>	430	<b>Switch Location</b>	Main DC Panel
Remote battery switch with switch located on main DC panel and solenoid mounted in grey enclosure next to the generator and battery in the lazarette.			



<b>Bow &amp; Stern Thruster Batteries</b>			
<b>Make/Brand</b>	FIAMM	<b>Voltage</b>	12VDC
<b>Model</b>	Neptune	<b>Protection</b>	250A Fuse x 2
<b>Capacity (CCA)</b>	1000	<b>Switch Location</b>	none
Bow thruster battery is located under the fwd. berth in the bow section. Stern thruster battery is located in the lazarette on the port side next to the water tank.			





## Electrical - Charging/Inverter

<b>Battery Charger 1</b>			
<b>Make/Brand</b>	Victron	<b>Output Rating (amp)</b>	60A 3-Output
<b>Model</b>	Centaur	<b>Serial Number</b>	HQ1736E29V3
<b>Part Number</b>	CCH012060000		
Both battery chargers are mounted in the engine room on aft bulkhead			



<b>Battery Charger 2</b>			
<b>Make/Brand</b>	Victron	<b>Output Rating (amp)</b>	40A 3-Output
<b>Model</b>	Centaur	<b>Serial Number</b>	HQ1648NQA3Z
<b>Part Number</b>	CCH012040000		
Both battery chargers are located in the engine room on aft bulkhead			



<b>Inverter or Inverter-Charger</b>			
<b>Make/Brand</b>	Victron	<b>Output Rating (amp)</b>	8A
<b>Model</b>	Phoenix	<b>Output Rating (Watt)</b>	2000
<b>Part Number</b>	CIN122200000	<b>Serial Number</b>	HQ1649T1F4
Inverter is mounted in the lazarette on fwd. bulkhead. Powers AC outlets.			



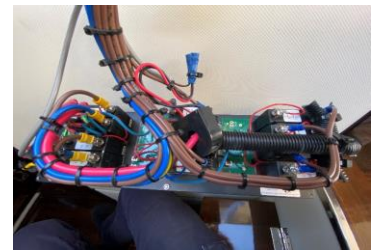


## Electrical - AC Distribution

<b>Main Distribution Panel</b>			
<b>Make/Brand</b>	BEP	<b>Voltage</b>	230VAC
<b>Model</b>	Millennium Series - 12		
<b>Part Number</b>	Custom - Clipper		
<p>The main AC panel includes circuit breakers for the systems as listed below. The AC panel is mounted directly below the main DC panel.</p>			



<b>Circuit Breaker Panel Layout</b>					
SHIP POWER	50A	INVERTER/CHARGER	25A	BATTERY CHARGER	20A
230VAC 50Hz		AIR CONDITIONING	25A	MICROWAVE	15A
SHORE POWER	50A	GALLEY OUTLETS	15A	WATER HEATER	10A
REVERSE POLARITY		OUTLETS	15A	REFRIGERATION	15A



<b>Shore Power Inlet</b>			
<b>Inlet Make/Brand</b>	Marinco	<b>EWOFF</b>	YES
<b>Rating (amp)</b>	32A	<b>EWOFF Expiry</b>	17/03/2025
<b>RCD Make/Brand</b>	Schneider	<b>Rev Polarity Light</b>	YES
<b>Rating (amp)</b>	25A	<b>Galvanic Isolator</b>	YES
<p>Main RCD is mounted on the aft bulkhead in the lazarette. The Galvanic Isolator is mounted next to the RCD.</p>			



<b>Shore Power Lead</b>			
<b>Make/Brand</b>	GEWISS connector/Custom lead	<b>Test &amp; Tag</b>	YES
<b>Rating (amp)</b>	16A	<b>Test &amp; Tag Expiry</b>	2/02/2022
<b>Length</b>	10M		





## Appliances

Refrigeration			
<b>Make/Brand</b>	Isotherm	<b>Voltage/Protection</b>	12V 10A-CB
<b>Model</b>	CR130D	<b>Refrigerant</b>	R134a
<b>Part Number</b>	1130BA7MK0000		
Single door with stainless steel finish. No freezer box. Dimensions 745mm H x 525mm W x 520mm D			



Hot Plate/Hob			
<b>Make/Brand</b>	Teka	<b>Voltage/Protection</b>	230VAC 15A-CB
<b>Model</b>	VT TC 2P B	<b>Wattage</b>	2900-3000W
<b>Part Number</b>	SC178N00179		
Modular vitroceramic hob (4mm ceramic glass). 2 Elements, 9 power settings Dimensions - Fitting 270mm W x 500mm L x 55 D Dimensions - Overall 300mm W x 520mm			



Microwave			
<b>Make/Brand</b>	Beko	<b>Voltage/Protection</b>	230VAC 15A-CB
<b>Model</b>	MD2610	<b>Wattage-Input</b>	1200W
<b>Part Number</b>	MD2610	<b>Wattage-Output</b>	700W
Dimensions 262mm H x 452mm W x 325mm D Weight 10.7Kg			



Hot Water Cylinder			
<b>Make/Brand</b>	Quick	<b>Voltage/Protection</b>	230VAC 10A-CB
<b>Model</b>	B33012S	<b>Heat Exchanger</b>	YES
<b>Part Number</b>	FLB33012S000A00	<b>AC Element</b>	1200W
<b>Serial Number</b>	102611	<b>Capacity</b>	30L
Mounted in the lazarette on stbd side.			







## Monitoring

DC Monitor			
Make/Brand	BEP	Serial Number	J3363649
Model	600-DCSM		
Part Number	80-600-0022-00		
Multi DC systems monitoring. Displays House battery Voltage and Current including State of Charge. Start Battery voltage. Auxiliary battery voltages. Located on main distribution panel in companionway.			



AC Monitor			
Make/Brand	BEP	Serial Number	J3351259
Model	600-ACSM		
Part Number	80-600-0023-00		
Multi AC systems monitoring. Displays AC voltages from Shore Power, Inverter & Generator.			



Black Tank Monitor			
Make/Brand	MORS	Voltage/Protection	12V 5A-CB
Model	Unknown		
Part Number	Unknown		
Brand is unknown and there is no access to the rear of the unit. Black facia with 8 LED Indicator lights.			



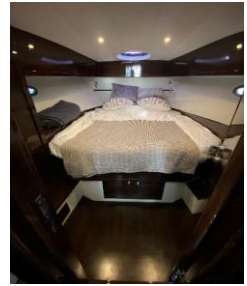
Grey Tank Monitor			
Make/Brand	MORS	Voltage/Protection	12V 5A-CB
Model	Unknown		
Part Number	Unknown		
Brand is unknown and there is no access to the rear of the unit. White facia with 8 LED Indicator lights.			





## Lighting

<b>Forward cabin</b>			
<b>Downlights</b>		4	Light Source LED-Insert
<b>Reading Lights</b>		2	Light Source LED
<b>Lighting Details</b>			
Overhead lights switched from single wall switch. Reading lamps have integral switches.			



<b>Head/Shower</b>			
<b>Downlights</b>		1	Light Source LED-Insert
<b>Shower Lighting</b>			
<b>Downlights</b>		1	Light Source LED-Insert
Toilet and Shower rooms are split on either side of the companionway.			



<b>Saloon/Galley/Helm Lighting</b>			
<b>Downlights</b>		6	Light Source LED-Insert
<b>Courtesy Lights</b>		2	Light Source LED
<b>Lighting Details</b>			
Galley and Saloon Downlight lights are switch on one circuit, controlled by switch next to helm. Helm lights are on own circuit, controlled by switch next to the helm. Saloon courtesy lights are controlled by switch next to helm.			



<b>Lighting - Other</b>			
<b>Companionway</b>			
<b>Courtesy Lights</b>		3	Light Source LED
<b>Cockpit Lighting</b>			
<b>Downlights</b>		3	Light Source LED-Insert
<b>Courtesy Lights</b>		3	Light Source LED
<b>Engine Room Lighting</b>			
<b>Strip Lights</b>		2	Light Source LED
<b>Lazarette Lighting</b>			
<b>Strip Lights</b>		2	Light Source LED
<b>Lighting Details</b>			
Companionway step courtesy lights are controlled via switch next to helm Cockpit downlights are controlled via switch next to helm Cockpit courtesy lights are controlled via switch next to helm Engine room lights are switch via circuit breaker on main DC panel			





**Lighting - cont.**

---


<b>Fixed Spot/Floodlight</b>			
<b>Make/Brand</b>	Unknown	<b>Voltage/Protection</b>	12V 10A-CB
<b>Model</b>	Unknown	<b>Light Source</b>	Filament Bulb
<b>Part Number</b>	Unknown	<b>Light Output</b>	Unknown
No branding or product details could be found on either the lamp or the control unit.			






## Lighting - Navigation


Port Lamp			
Make/Brand	Osculati	Voltage/Wattage	12V 10W
Model	Sphera - Classic	Light Source	Filament Bulb
Part Number	11.407.0X	NM Rating	1NM
		Approvals	RINA & USCG




Starboard Lamp			
Make/Brand	Osculati	Voltage/Wattage	12V 10W
Model	Sphera - Classic	Light Source	Filament Bulb
Part Number	11.407.0X	NM Rating	1NM
		Approvals	RINA & USCG




Anchor Lamp			
Make/Brand	Osculati	Voltage/Wattage	12V 10W
Model	360 Classic	Light Source	Filament Bulb
Part Number	11.132.0X	NM Rating	2NM
		Approvals	RINA & USCG



Stern Lamp			
Make/Brand	Osculati	Voltage/Wattage	12V 10W
Model	Sphera - Classic	Light Source	Filament Bulb
Part Number	11.407.0X	NM Rating	2NM
		Approvals	RINA & USCG



Steaming Lamp			
Make/Brand	Osculati	Voltage/Wattage	12V 10W
Model	Sphera - Classic	Light Source	Filament Bulb
Part Number	11.407.0X	NM Rating	2NM
		Approvals	RINA & USCG





**Notes/Comments**

Viking is a 12m sedan launch with a single (double) berth in the bow section. Separate shower and head. Helm, Saloon & Galley area. Cockpit with large boarding platform. Single helm station with hydraulic steering and systems controls, main electronics displays with engine integration. Powered by a single Volvo Penta D6-435 Diesel engine with shaft drive and single rudder. Compact 4.5KW diesel generator. 12 Volt DC main house battery and systems. 12 Volt DC starting battery. 12 Volt Generator starting battery. 12 Volt Bow thruster battery, 12 Volt Stern thruster battery. Vessel has current Electrical Warrant of Fitness (EWOFF) and shore power lead has current Test & Tag label.

**Link to Image Folder**

[Insert link](#)

**Report Completed By**

Paul Bartley



**Dynamic Marine Ltd**  
12 Lucas way, Albany, Auckland, New Zealand  
Phone: 09 391 0120 — Email [info@dynamicmarine.co.nz](mailto:info@dynamicmarine.co.nz) — Website [www.dynamicmarine.co.nz](http://www.dynamicmarine.co.nz)