

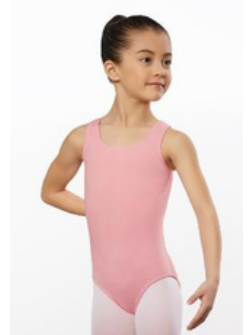
Leotards

Leotards: Please use the sizing chart below to determine what size will best fit your child. To measure girth, you want to take a tape measure and start at the top of the shoulder, run it down the body, between the legs and up the other side to the top of the shoulder where you started.

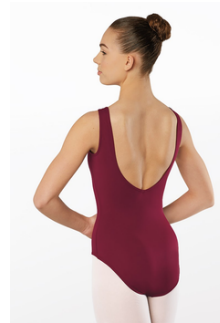
Style CL12112
Cotton Short Sleeve Leotard
Black, Lavender, Ballet Pink
\$24



Style CL11870
Cotton Tank Leotard
Black, Lavender, Ballet Pink
\$24



Style MT12099
Princess Seam V-Neck Leotard
Black, Black Cherry
\$38



Style MT12190
Pinch Front 3/4 Sleeve
Leotard
Black
\$38



Tie Wrap Skirts

Please use the sizing chart below to determine what size will best fit your child.



Style: S12472

Tie Waist Wrap Skirt

Black, White, Ballet Pink,
Violet

\$24

Acro Shorts and Crop Tops

Please use the sizing chart below to determine what size will best fit your child.



Style MT12469

Low Rise Mid
Length Shorts
Black

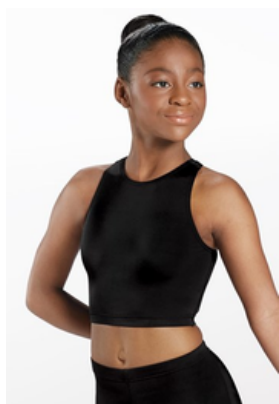
\$26



PT9424

Cotton High Neck
Crop Top
Black

\$28



MT12636
 High Neck Crop Top
 Black, Cerise, Purple, Navy,
 Peacock, Pine
\$28

Leotard / Skirts / Shorts / Tops

Sizing Chart – All Sizes in INCHES

| CHILD UNISEX SIZE CHART | | | | | | | | | | |
|-------------------------|----|--------------|------------------|----------------|-------------|--------------------|--------------|-------------|----------------|------------------|
| Size | | Toddler T | XX-Small XXSC | X-Small XSC | Small SC | Intermediate IC | Medium MC | Large LC | X-Large XLC | XX-Large XXLC |
| Girth | in | 33 – 35 | 35 – 37 | 37 – 41 | 41 – 44 | 44 – 47 | 47 – 52 | 52 – 54.5 | 54.5 – 57 | 57 – 58.5 |
| Bust/ Chest | in | 20 – 21 | 21 – 22 | 22 – 24 | 24 – 26 | 26 – 28 | 28 – 31 | 31 – 33 | 33 – 37 | 37 – 39 |
| Waist | in | 20 – 21 | 21 – 22 | 22 – 23 | 23 – 24 | 24 – 25 | 25 – 27.5 | 27.5 – 29.5 | 29.5 – 33 | 33 – 35 |
| Hips | in | 20.5 – 21.5 | 21.5 – 22.5 | 22.5 – 25 | 25 – 27 | 27 – 30 | 30 – 33.5 | 33.5 – 35.5 | 35.5 – 39 | 39 – 41 |
| Inseam | in | 13 – 14.5 | 14.5 – 16 | 16 – 19.5 | 19.5 – 22.5 | 22.5 – 25 | 25 – 28 | 28 – 29.5 | 29.5 – 30.5 | 29.5 – 30.5 |

Tights

Please use the tights sizing chart below to determine what size will best fit your child.

Style: W900C
Children's Convertible Tights
Black, Ballet Pink, Light
Suntan
\$12

[illegible]

Dance Shoes

Ballet Shoes: This brand of ballet shoe fits very close to your child's street shoe size. Please use that as a guide when choosing a size.



Style: W300
Ballet Shoes
Pink
\$26

Jazz / Lyrical Shoes: This brand of jazz shoe fits smaller than a street shoe. We suggest you choose a jazz shoe two sizes larger than the street shoe size.



Style: W800
Classic Slip-on Jazz Shoe
Black, Caramel
\$44

Tap Shoes: This brand of tap shoe fits very close to your child's street shoe size. Please use that as a guide when choosing a size.



Style: W2600
Tap Shoe
MaryJane Style Velcro Close
Black
\$38