

Eyeglass Pocket

By Patty Dunn



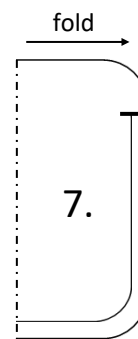
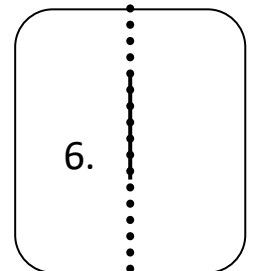
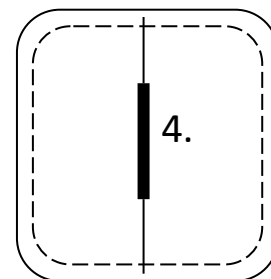
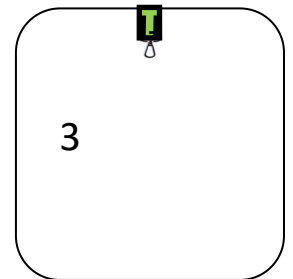
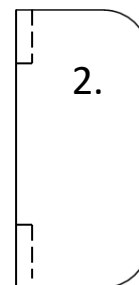
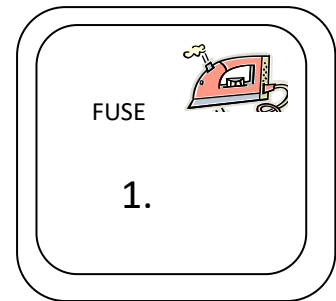
Supplies:

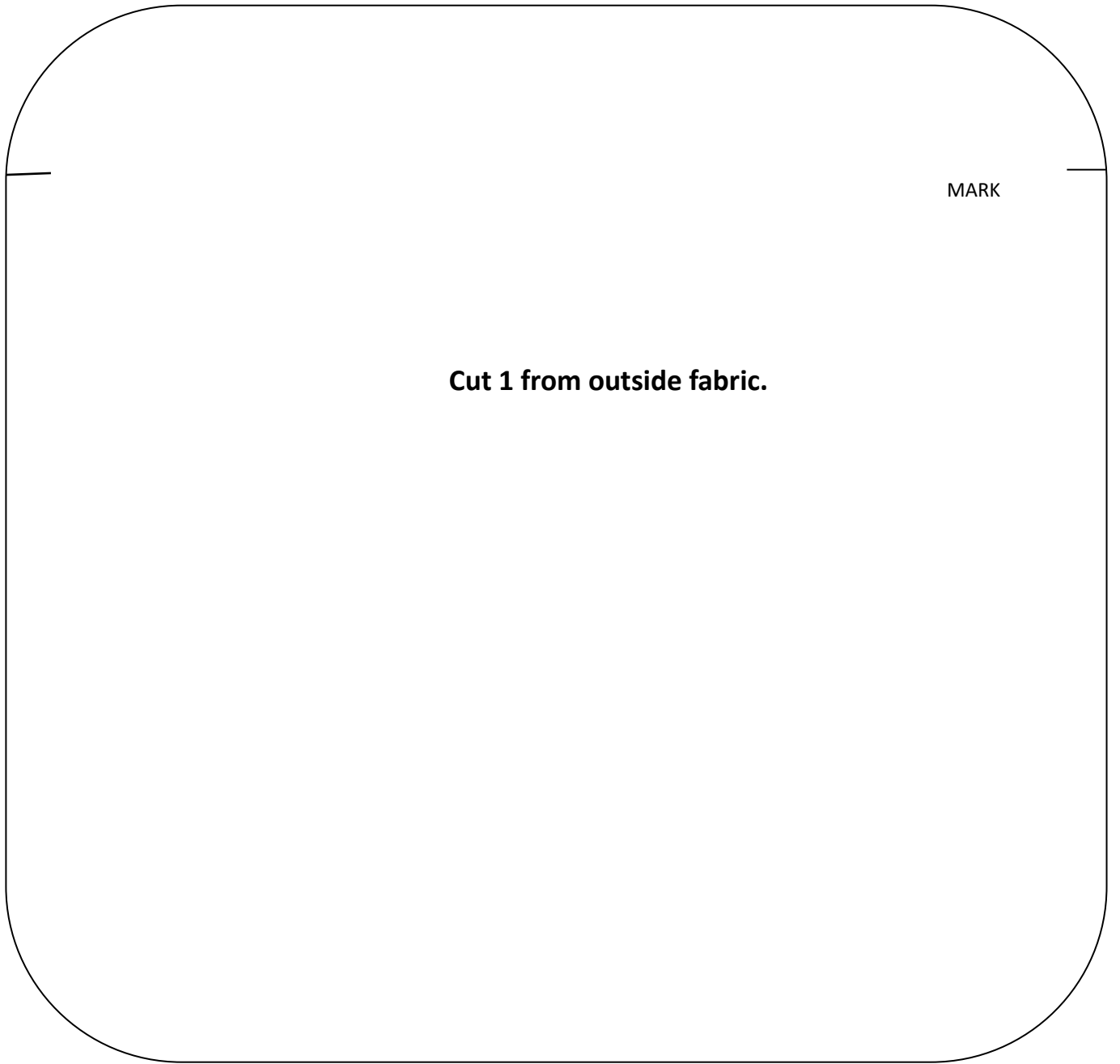
- 8" square of outside fabric.
- 8" square of soft inside fabric.
- 8" square of fusible 1/8" foam batting or interfacing.
- Optional small swivel hook plus 2 1/2" X 4" fabric for hanging tab.
- Thread to match fabric.

FROM PATTERN PROVIDED:

- Cut 1 outside fabric
- Cut 2 inside fabric
- Cut 1 batting or interfacing.
- (optional) Cut 1 hook tab

1. Center fusible batting to wrong side of outside fabric and press.
2. Place inside fabric (lining) RST and stitch center to marked points leaving opening for turning — press seam open
3. Place optional hook, meeting raw edges on right side of outside fabric.
4. Place outside and inside fabrics RST (with hook sandwiched between layers. Stitch around outside edge (you will be right beside batting but not on it. Clip corners or use pinking shears to trim seam allowance all the way around. .
5. Turn case through opening and press. Pin opening closed.
6. With a zig zag or feather stitch sew center seam line from top to bottom to close opening. (or hand whip)
7. Fold sides together, topstitch 1/8" from finished edge starting at marked point to folded edge.

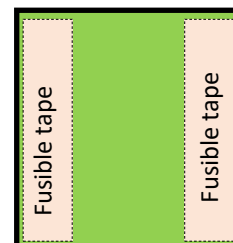
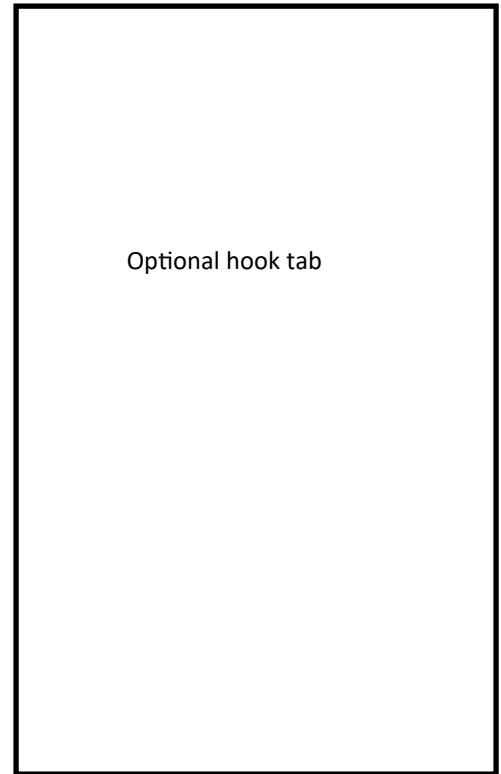
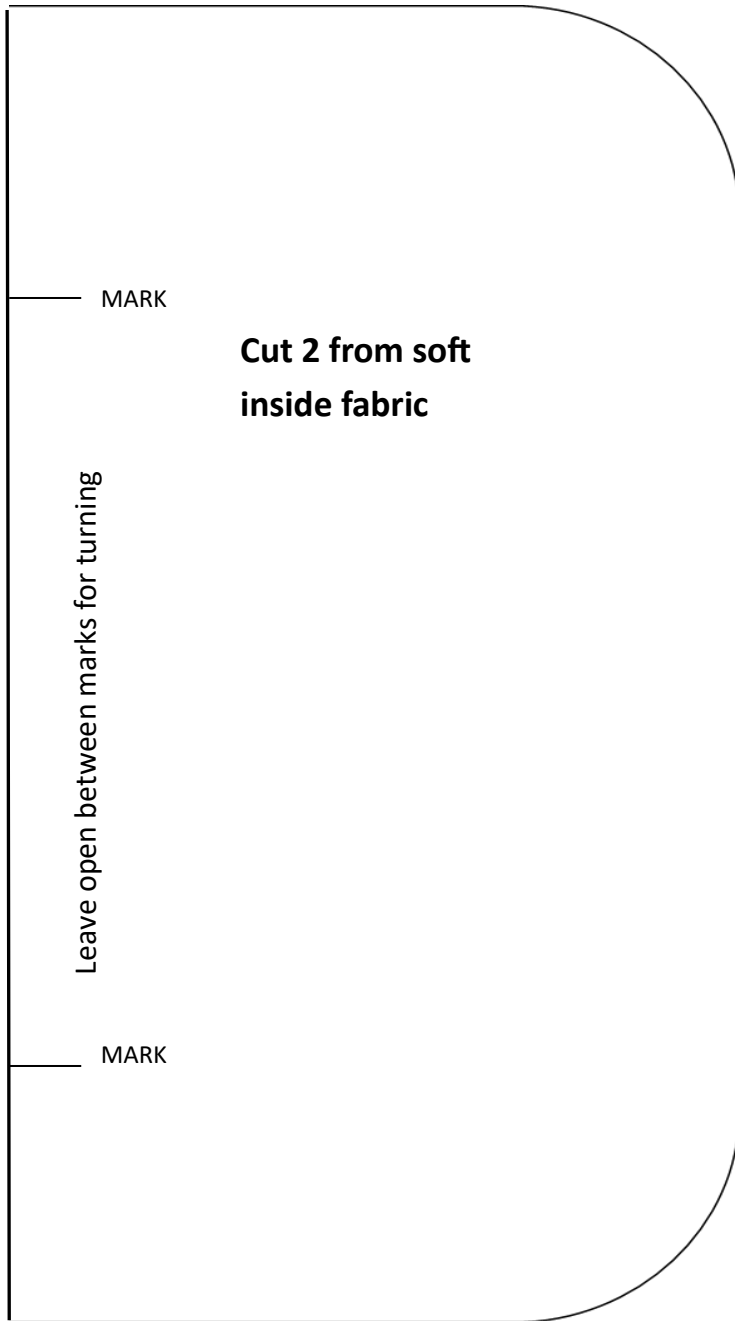




MARK

Cut 1 from outside fabric.

CUT 1 on Inside line from FUSIBLE
FOAM BATTING OR INTERFACING



Optional Tab:

- On wrong side of tab, Iron 1/2" strip of fusible tape against raw edge of tab.
- Peel away paper, fold fused sides toward center.
- Press.
- Fold again meeting folded edges.
- Topstitch both long sides.
- Place swivel hook in center.
- Meet the raw edges and stitch close to the hook

