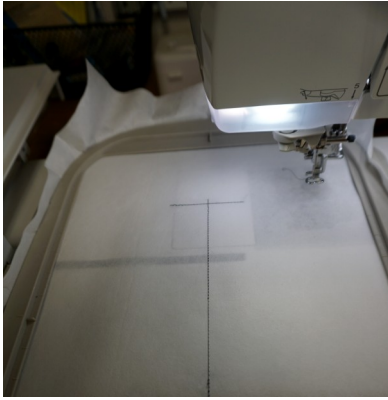
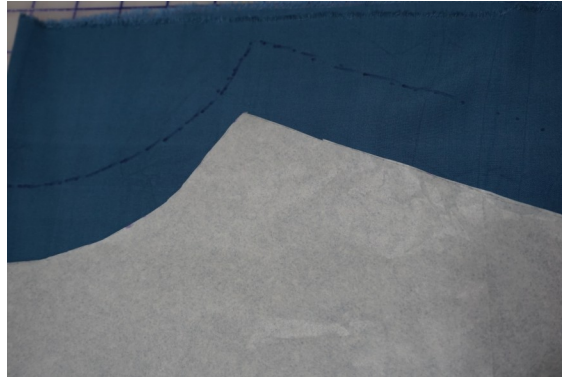


Regular blouse embroidery from Dime—T-shirt Remakes



Placement line stitched on stabilizer



Trace neck but do not cut out



Line up center and marked neck with placement line and embroidery. Remove hoop do not take fabric off.



Cut interfacing the size of front. With right sides together (fusible will be facing up) stitch the last step in the embroidery.



Remove outline stitch



Remove stabilizer—wash away or tear

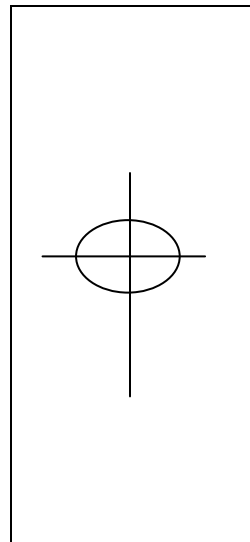


Cut down center of stitching



Turn interfacing to wrong side and press making sure seam is on the edge.

Soft Delight blouse



Mark center and TRACE neckline in the correct place on right side of fabric.

Stitch on traced line to keep neckline stable.

Hoop matching placement line with marked/stitched neck.

Embroidery back neck if desired

Finish in same manner as above. Add interfacing around neck for finish as explained in Soft Delight pattern.