

Change the neckline of the Flairboyant pattern:

This pattern is for a round scooped neck.

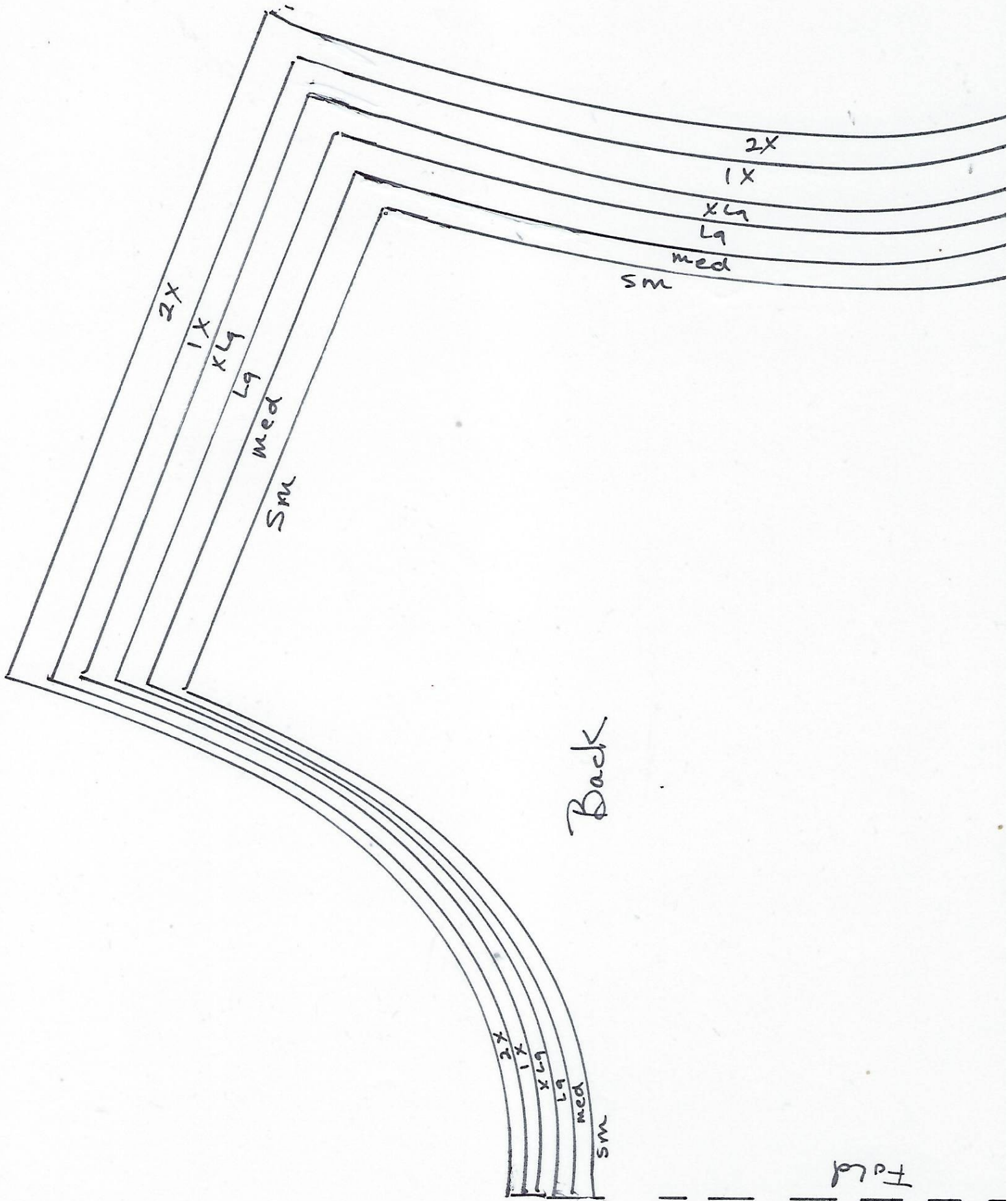
- Cut your size following lines on both back and front.
- Place pattern matching outside shoulder, armhole and center front fold. (inside shoulder at neck will not match)
- Tape new neckline pattern at bottom of template page where center front and armhole line up with your size. (removable tape is suggested)
- Fold back original neckline.
- Place pattern on fabric according to pattern layout and cut.
- Add an extra 2" to length of neck band in Flairboyant pattern

Using pattern instructions for Neckband application sew blouse or dress together.



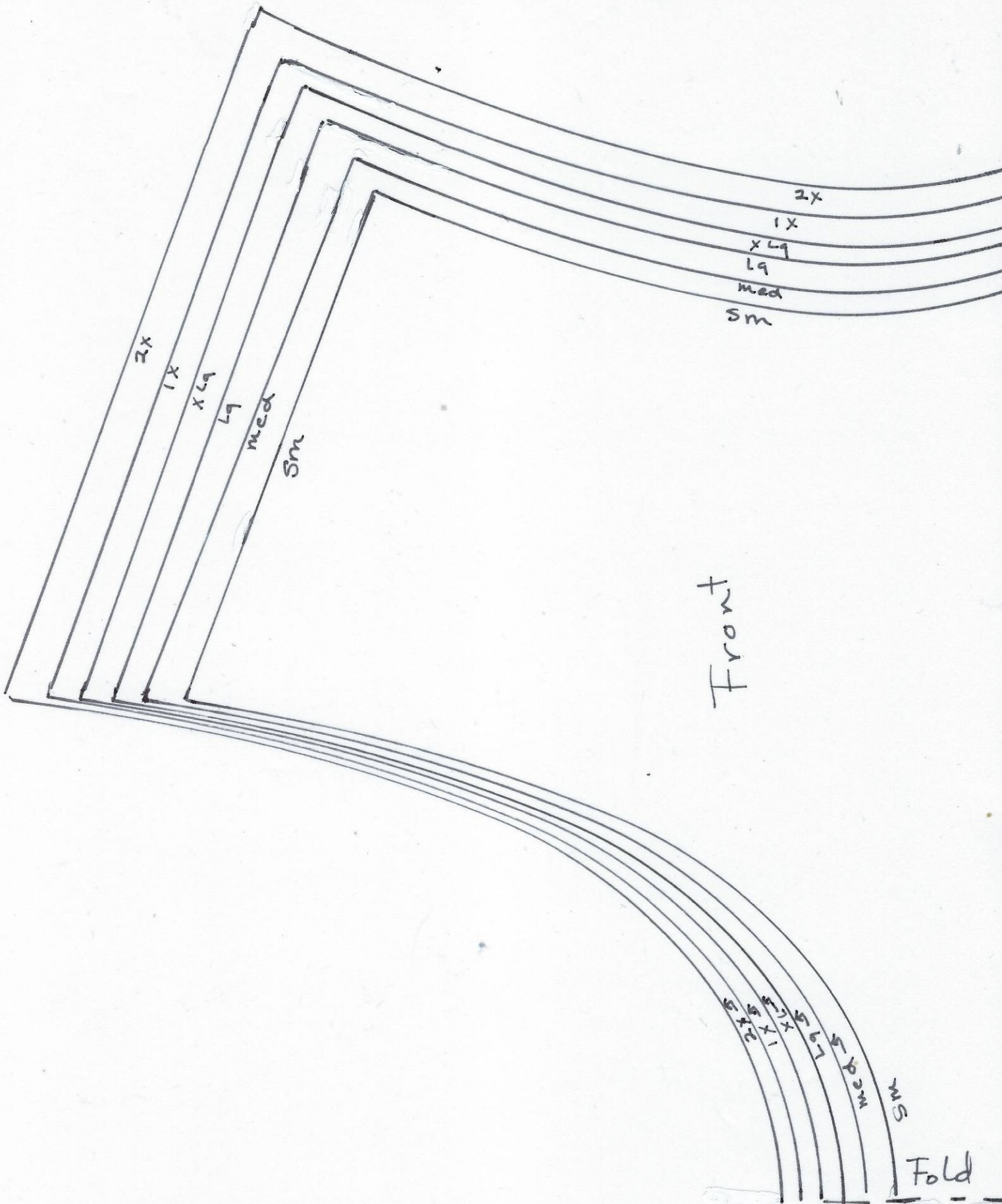
SLEEVE fake cuff:

- Cut sleeve length to elbow length.
- Fold and press up hem 1 1/2" twice.
- Stitch 1/4" from folded edge catching both folds.
- Turn down hem and press .



Back

Fold



2x

1x

xLg

Lg

med

Sm

2x

1x

xLg

Lg

med

Sm

Front

5

2x

5

1x

5

xLg

Lg

5

Sm

Fold