



Scarf = VEST



Pashmina Possibilities - # 1

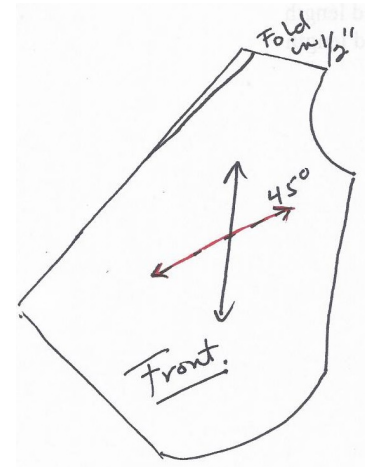


Instructions for layout for sewing a scarf into a vest using All Dunn Designs pattern - "The Long and the Short of It" *Pattern not included.*

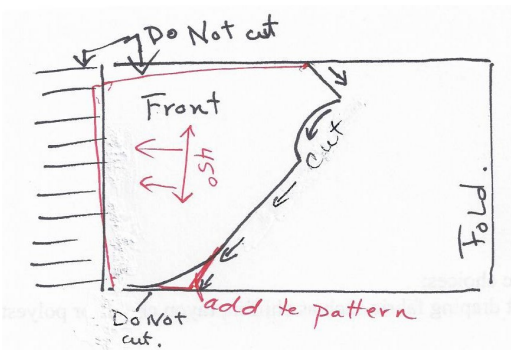
By Patty Dunn  
© 2015 All Rights Reserved

- Removing label. Do not pull label to remove. Press with NO STREAM on WOOL setting. Once label is warm peel label away placing your finger on fabric under label to keep it stable. If fabric snags stop, use Goo Gone on a Q-tip and gently rub away. Rinse area in cool water and hang to dry.
- Fold down front shoulder point 1/2" to take away seam allowance.

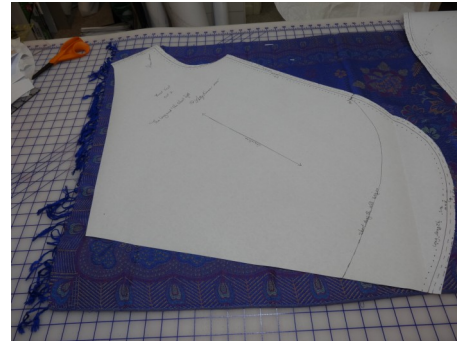
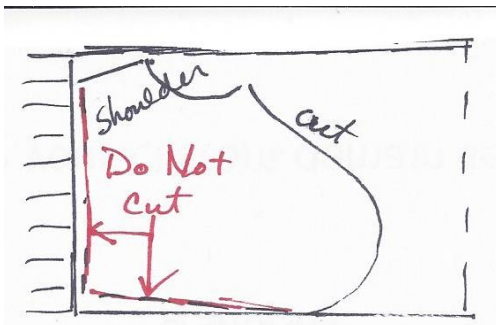
- Line up inside shoulder point with **finished edge** of scarf. Choose fringed edge from shoulder to point or from point to bottom. Be careful to consider if there is a important design. In this case if pattern was placed with fringe from shoulder to neck, peacock would be upside down. A tilt is not a bad thing but upside down is not good. You will cut shoulder, armhole and side only. Use all finished edges you can. NOTE bottom is not long enough because of width of this scarf. I folded up bottom and will compare front and back before I lay out back.



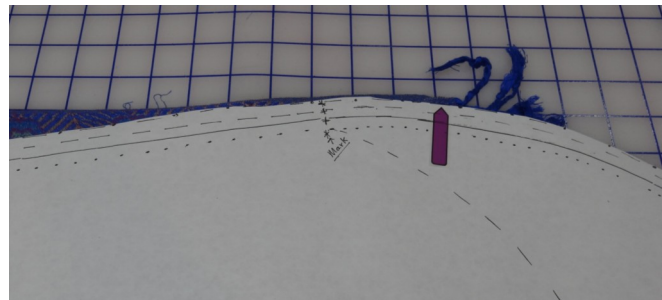
**Fringe at bottom front drape. Best choice for directional design.**



**Fringe from shoulder to front point. Best choice for elaborate boarder or plain design.**

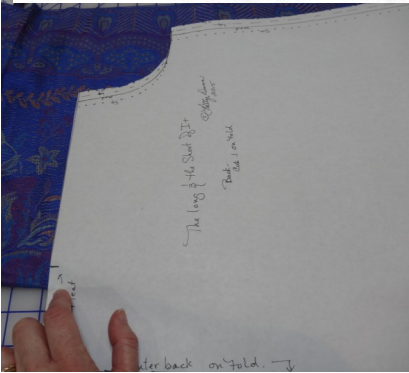
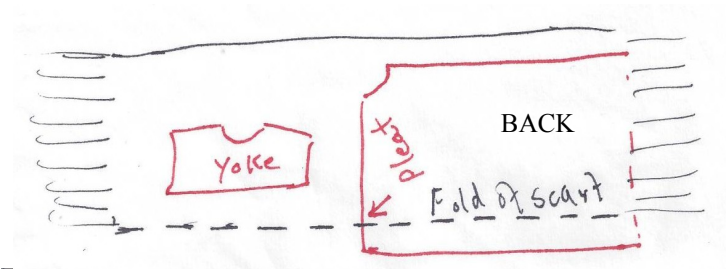


- The above pictures show scarf folded in half lengthwise. Make sure edges are lined up if you cut 2 at the same time. If cutting one at a time, open scarf and cut on each edge making sure to FLIP pattern so you have left and right.
- BEFORE YOU MOVE THE FABRIC: Compare front and back sides and mark. Place fringed bottom at that marked point. In this case back will be shorter because of peacock.

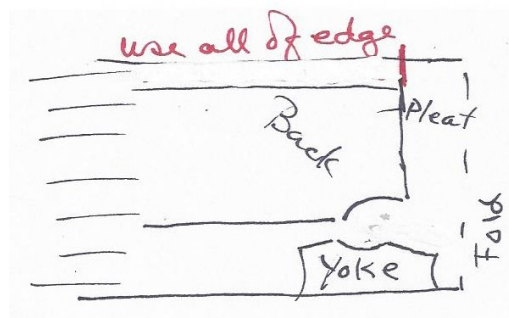




- Option 1. Fold width of scarf in half. Place back on fold taking advantage of as much width as you can. If you have extra, gather into yoke. This option was chosen because of peacock design in center. Remember: If you adjusted the pattern length because of front length, place your adjusted length on fringe for the finished bottom hem.



- Option 2: Cross over back: Use finished edge for center back. Instead of pleat, cross one side over the other.



This is only the layout for using a scarf for The Long and the Short of It pattern from All Dunn Designs. Please be aware that scarf lengths and widths vary. The front left picture is from an antique large rectangle scarf. The one on the right is from a Pashmina.

- 2 scarves at least 28" wide for this pattern.
- Pattern for vest (The Long and the Short of It)
- Thread to match fabric
- Light weight interfacing for yoke

*Enjoy!*  
*Patty Dunn*



All Dunn Designs  
Patty Dunn  
361-993-0034  
[www.alldunndesigns.com](http://www.alldunndesigns.com)  
[www.patternmd.com](http://www.patternmd.com)