

Milano Collection

ATTENTION

- \*IF THIS DOOR HAS MISSING HARDWARE PARTS OR SHATTERED, PLEASE DO NOT RETURN TO THE PLACE OF PURCHASE.
- \*PLEASE EMAIL US [info@mossweet.com](mailto:info@mossweet.com) FOR PROMPT REPLACEMENT.
- \*USE THE HARDWARE PARTS GUIDE BELOW TO IDENTIFY THE COMPONENTS THAT ARE MISSING OR SHATTERED.
- \*REPLACEMENT HARDWARE PARTS WILL BE QUICKLY SHIPPED FROM OUR FACILITIES LOCATED IN MILLBURY, MASS.

THANK YOU

Technical Support: (833)667-9338

HARDWARE PARTS GUIDE (Milano Collection)

Please mention the Parts Numbers when contacting us.

												
460510	460511	460512	460513	460514	460515	460516	460517	460518	460519	460520	460521	460522
Qty 2		Qty 4	Qty 2	Qty 2	Qty 6		Qty 1	Qty 1	Qty 1	Qty 4	Qty 4	Qty 2

# STEP 1

## Quick Installation Guide

A minimum 4" threshold is required

A: Start by installing both side frames (**460510**).

B: Install the guide block(**460518**).

C: Install the top track (**460519**).

D: Attach the rollers (**460521**) to both glass panels, making adjustments to ensure the door hangs properly and slides smoothly.

E: Install the towel bars and four anti-water strips (**460512**) on both panels.

F: Seal the edges with water-resistant silicone to prevent leaks.(see step 4)

## The tools you may need for installation



Tape Measure



Razor Knife



Phillips Screwdriver



Power Drill



Drill bit Ø15/64"



Level



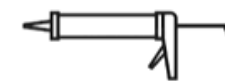
Hammer



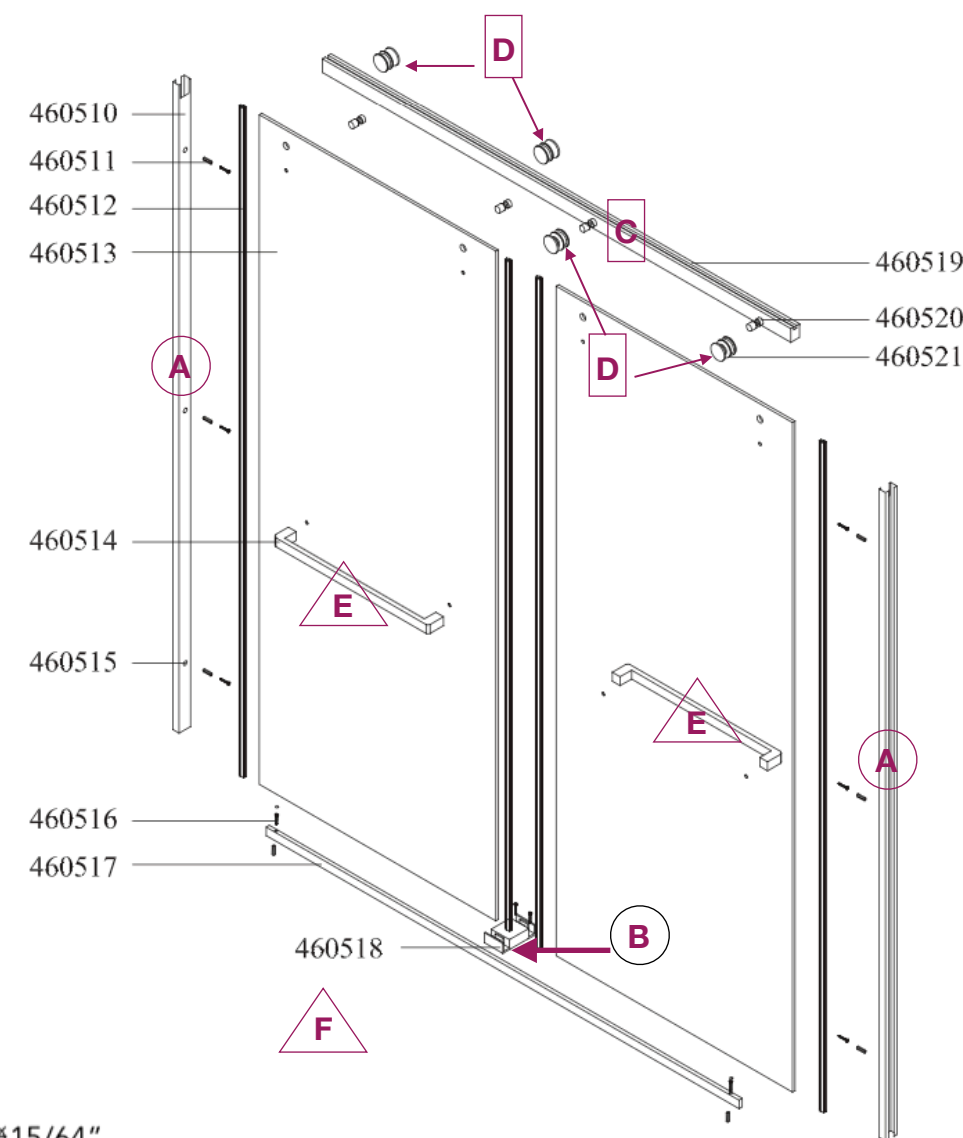
Pencil



Professional-Grade Glass Suction Cup



Caulk



# STEP 2

1) Measure actual opening, If not accommodate, trim frames to fit, the **maximum allowable cut is 4"**.

2) Leveling, spotting, and installing the side frame(**460510**).

3) Move one panel inside.

4) Leveling the guide block and install it.

5) Install top track and install the water dam barrier(**460517**).

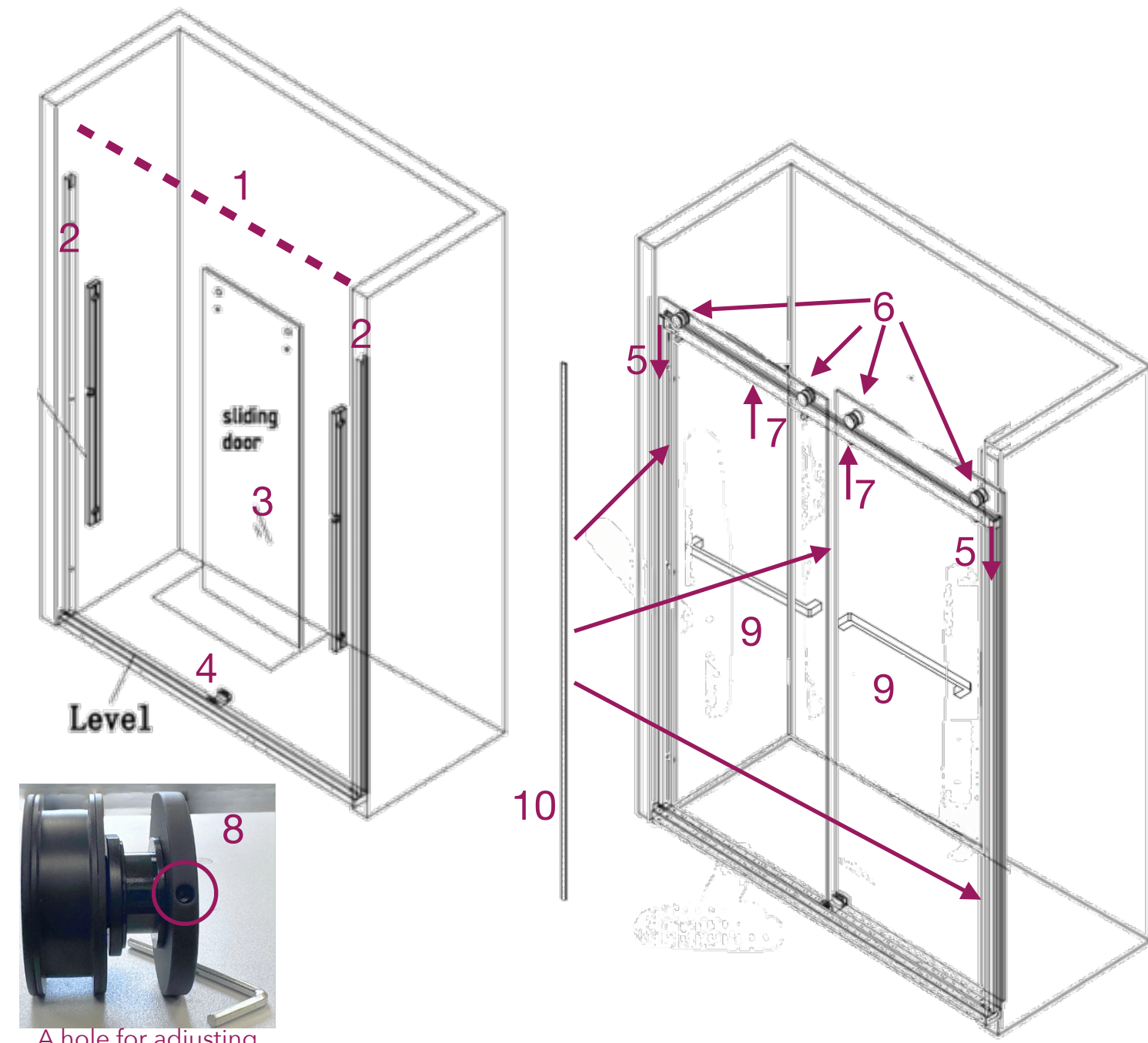
6) Attach the roller to the panels.

7) Hang the panels and install the anti-jump blocks (**469520**).

8) Adjust the rollers if needed. (See the sample right)

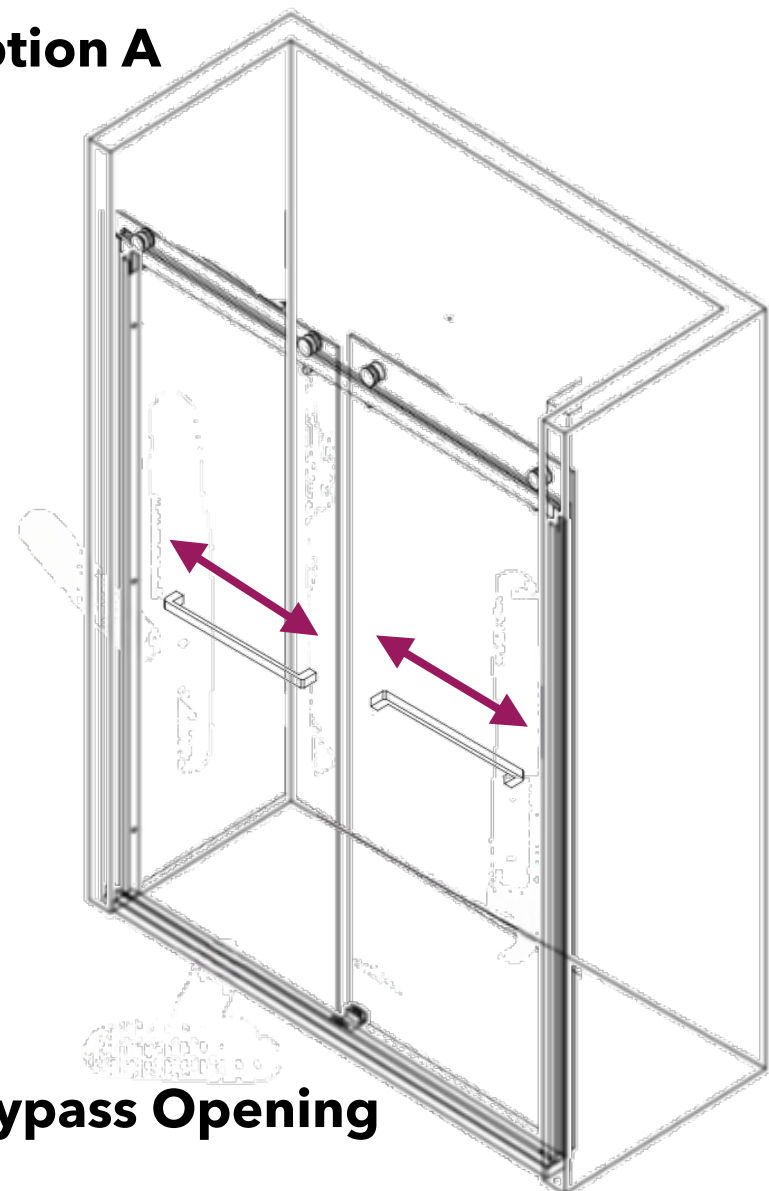
9) Install the towel bar(**460514**) .

10) Attache the anti-water strips (**460512**) to both panels.



# STEP 3

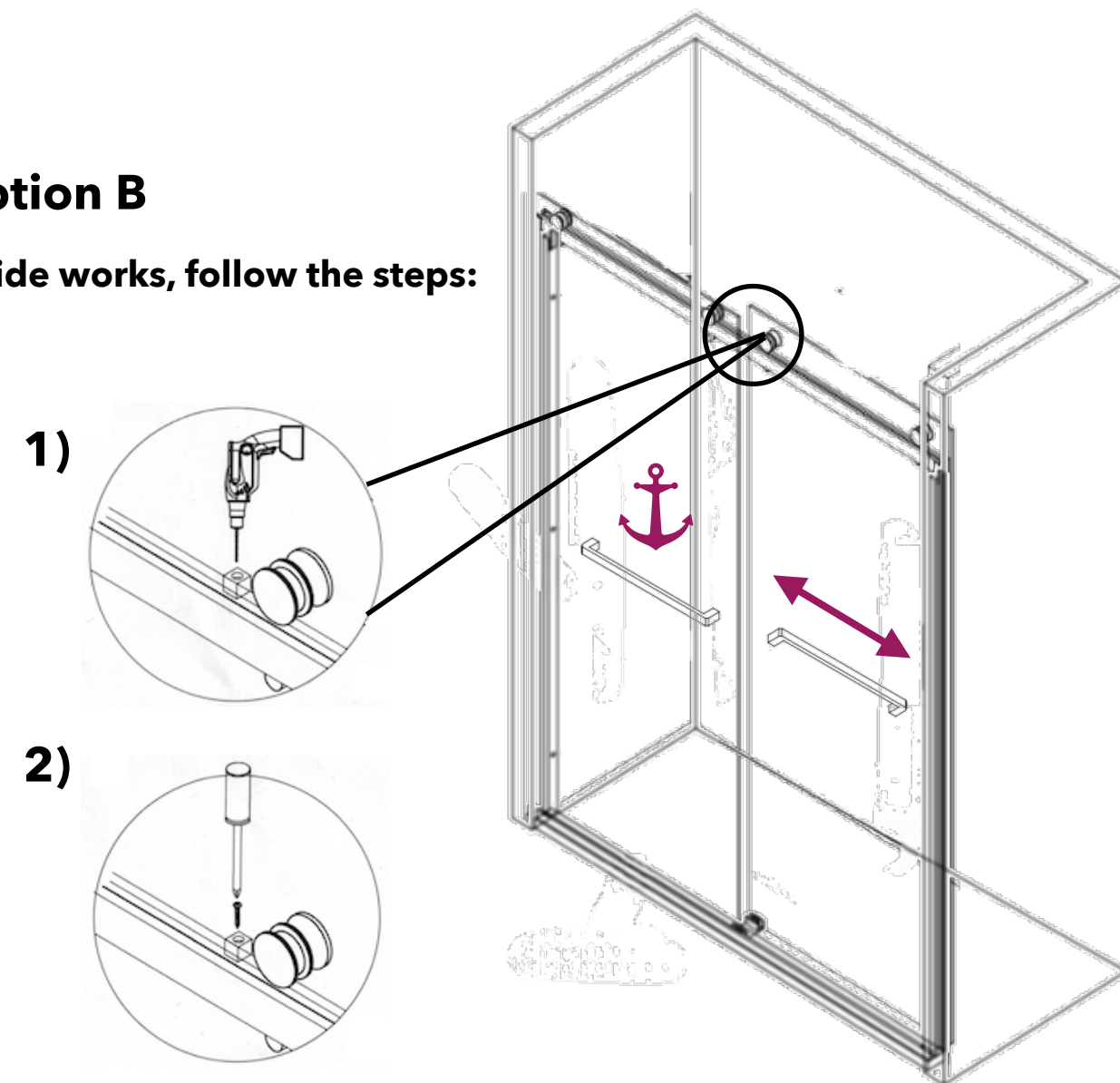
## Option A



Bypass Opening

## Option B

Either side works, follow the steps:



Single Door Opening

# STEP 4

Apply water-resistant silicone to the gap along the shower door frame and threshold, wait at least **24 hours** before use.



Scan for installation video

