

Milano Framed Shower Door Installation Introduction



Please call Toll-Free Customer Service: 1-833-667-9338



www.mosweet.com

info@mosweet.com



Thank you for your purchase.

If you encounter any challenges during installation or if the product dimensions don't align with your designated space, kindly reach out directly to MoSweet for assistance. Please refrain from returning the product to the place of purchase. We are committed to ensuring your satisfaction and offer the option to exchange panels or parts to accommodate your specific needs.

At MoSweet, we take pride in delivering quality products and exceptional customer service. Our goal is to guarantee your contentment with your purchase for years to come. With an extensive range of sizes available, MoSweet can provide panels/hardware to suit any measurements.

For any inquiries or assistance, please feel free to contact us. We appreciate your choice of MoSweet products and look forward to serving you. Thank you!

Best Regards,

The Team at
MoSweet
(833) 667-9338
Info@mosweet.com

Caution: The corners of tempered glass panels are particularly fragile. It is crucial to use the provided cardboard or robber blocks, ensuring the glass never contacts the tile surface during installation. Always place the glass on cardboard packaging or rubber blocks when outside the packaging. If needed, you can utilize wood, cardboard, or other rubber materials for added protection against breakage. Please exercise care in handling the glass to prevent damage.

IMPORTANT: Please read before install

1. ****Inspect Shipment Upon Arrival:** Before proceeding with installation, it is crucial to examine all packages for any visible shipping damage and to compare the quantity of items received with the packing slip. This step ensures that all components are accounted for and in good condition.
2. ****Introduction and Component Verification:** After unpacking, please take a moment to read through the provided introduction. Utilize the "Packing List" to verify the presence of all essential parts, marking each off as you confirm them. Should you discover any damages, finish flaws, or missing components, contact our customer service team within three business days of receiving your shipment. Please note, that MoSweet® will **NOT** cover the cost of replacements for any claims made beyond this period or after installation has commenced. For assistance, provide your order number or any other relevant purchase details to help us locate your original order efficiently.
3. ****Compliance with Local Building Codes:** It is your responsibility to consult local building and plumbing codes to ensure your installation meets all compliance standards. MoSweet® assumes no liability for code compliance or accepts returns based on these grounds.
4. ****Preparation for New Constructions:** For installations in new constructions, ensure all required plumbing and drainage are in place before installing the shower. Engage a qualified and, if necessary by local regulations, licensed plumber for all plumbing work.
5. ****Surface Preparation:** Before starting the installation, confirm that the base surfaces are level, solid, and capable of supporting the total weight of the unit. Walls should be checked for right angles to avoid installation difficulties. Adjustments and drilling may be required during the installation process.

6. ****Protecting the Product:** To prevent damage, all primary surfaces of the product should be protected throughout the installation. Do not place glass directly on hard surfaces unless specifically instructed. Leave corner protectors on until their removal is necessary, and use wood or cardboard to safeguard the glass edges and corners.

7. ****Installation Surface Requirements:** The unit must be installed on a level finished threshold and against plumb finished walls to ensure stability and proper operation.

8. ****Professional Installation Recommendation:** Given the heavy nature of the glass frameless shower door, we strongly recommend opting for professional installation to ensure safety and accuracy.

****Important Safety Notes****

****Handle Installation:** Do not attach the door handle or use it to lift the glass until explicitly instructed. Improper handling can lead to damage or injury. For moving heavy glass panels, always enlist the help of an assistant or use a professional-grade glass suction cup.



Please call Toll-Free Customer Service: 1-833-667-9338

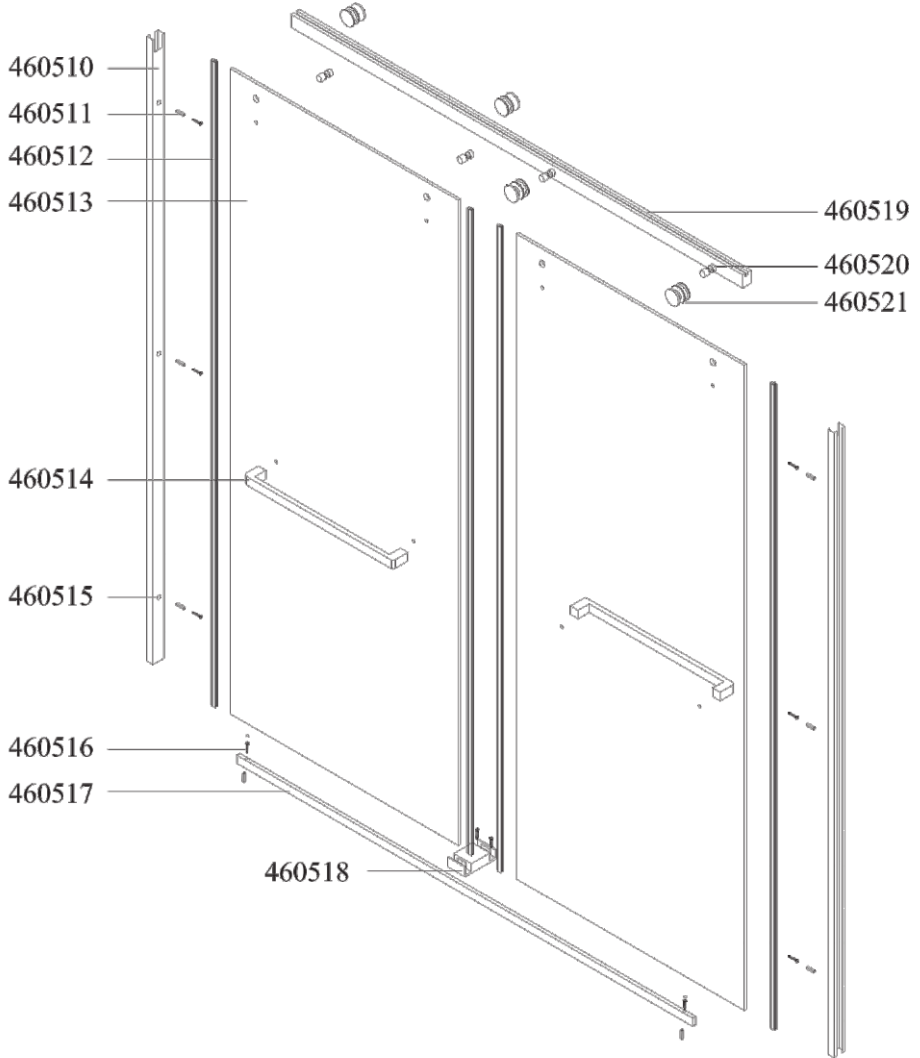


www.mosweet.com





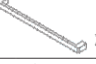








info@mosweet.com



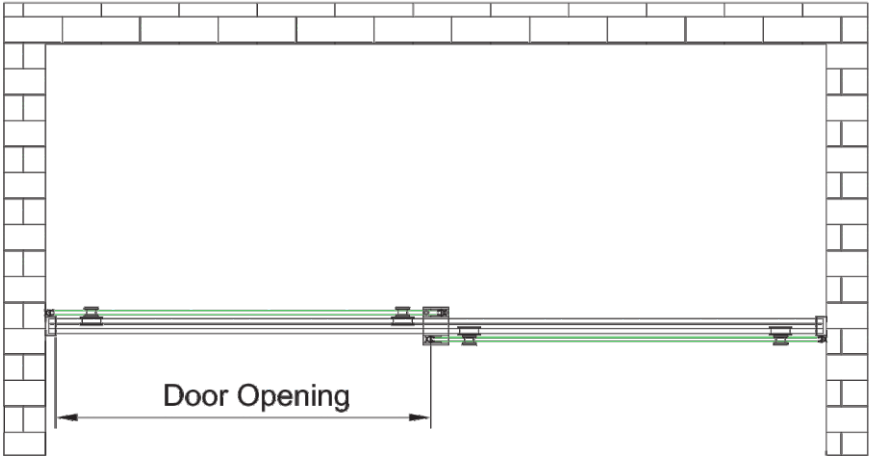
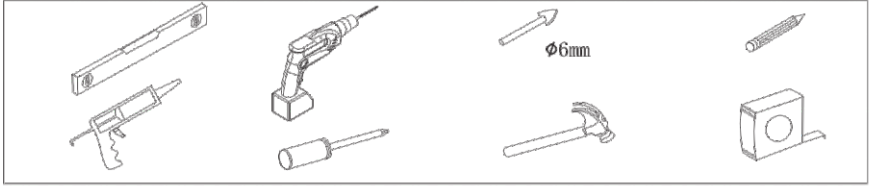
Spare Parts



Parts List

460510  x2	460511  ST4x30 x6	460512  x4	460513  x2
460514  x2	460515  x6	460516  St4x16 x2 +  x6	460517  x1
460518  x1	460519  x1	460520  x4	460521  x4

Tools Required

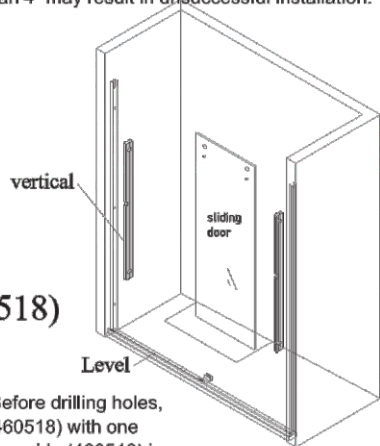
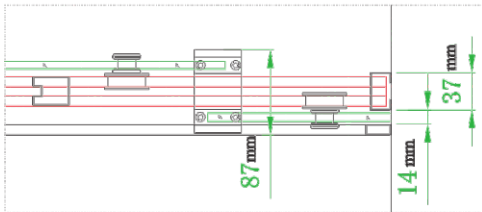


Size	Glass Thickness	Door Opening
44"-48"W x74"H	5/16"(8mm)	18"-22"
50"-54"W x74"H	5/16"(8mm)	21"-25"
56"-60"W x74"H	5/16"(8mm)	24"-28"
62"-66"W x74"H	5/16"(8mm)	27"-31"

Step A: Prepare for Installation

1. To facilitate the installation of this sliding door, ensure the wall is fully finished or tiled, ready for installation. Verify that the door opening is between 56" and 60"; any size outside this range may lead to installation issues. You may need to cut the top track and Water Dam Barrier (460519, 460517) to fit the actual width.
2. Place the two side frames (460510) against the wall to measure the flat level. If you intend to move the glass panel (460513) outside of the package, ensure the cardboard corner protection remains attached to the glass, particularly at the corners.
3. Check the flat level and width of the base (also known as the threshold). A minimum width of 4" is required for proper installation of this shower door. Before installing the bottom guide (460518), ensure the base /threshold meets this width requirement. Note: Any width less than 4" may result in unsuccessful installation.

Notice

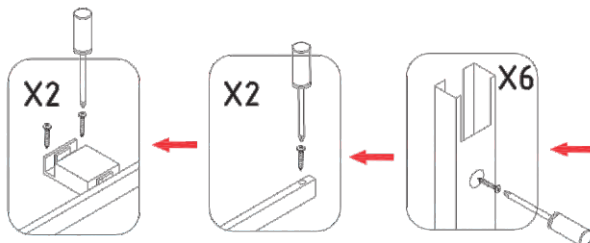
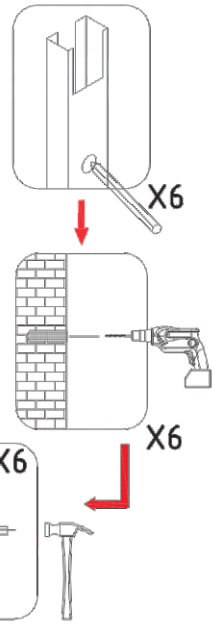


Step B: Install the bottom guide (460518) and side frames (460510)

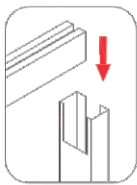
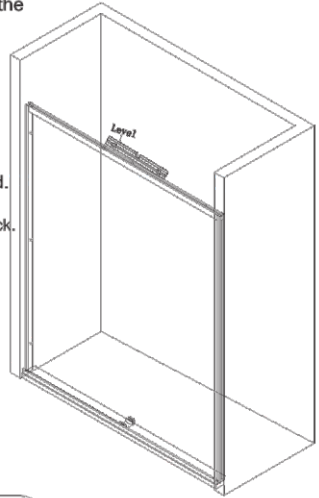
4. Position the bottom guide (460518) in the middle of the base. Before drilling holes, it is recommended to measure and position the bottom guide (460518) with one glass panel to ensure the distance is sufficient. Once the bottom guide (460518) is installed, proceed to install the Water Dam Barrier (460517).

*5. Tips: Take one glass panel install the roller first, and move it inside the shower space ****before**** installing the side frame would be convenient for your installation.*

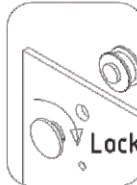
6. Install the two shower door frames (460510) onto the side wall
 - a) Ensure the side frame touches the Water Dam Barrier (460517) and is positioned vertically and rectangularly. Once one side is done, repeat the process identically for the other side.
 - b) Navigate the drill holes on the side frame and mark them on the wall to determine the accurate placement of the holes before drilling.
 - c) Drill the holes, insert the drywall anchors, and screws kit (460516), and secure the screws to complete the side frame installation.



7. Install the top track (460519) onto the top of the frame (460510). Specifically, insert the top track into the side frame properly, fitting it into the notch and ensuring that it is level.
8. Install the rollers on both panels. Refer to the dimension diagram in the installation guide for positioning the bottom guide(460517). The ideal position for the bottom guide (460518) is in the middle of the base/threshold. Then insert the Water Dam Barrier into the bottom guide (460518). Before placing the glass panel, ensure the plastic parts (black components inside the bottom guide) are properly positioned.
9. Observe the rollers installed on the glass panel as you hang the panel on the top track. Ensure that the inside panel hangs first, followed by the outside panel. Successfully hanging the panel is the first step. To determine whether the sliding door rolls properly, you may need to slightly adjust the rollers by finding the adjustable hole on the roller.
10. Install the water seals for all of the panels.
11. To prevent the glass door from jumping off the track when closing too hard, install the anti-jump blocks (460520).
12. Install the towel bar on each of the panels.
13. Cover the holes of the side frame and holes on the water dam barrier(460517) by utilizing (460520).

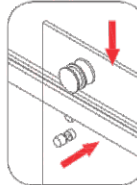


X1

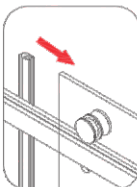


Lock

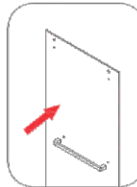
X4



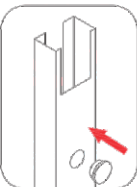
X4



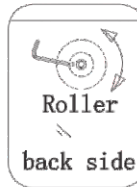
X4



X2



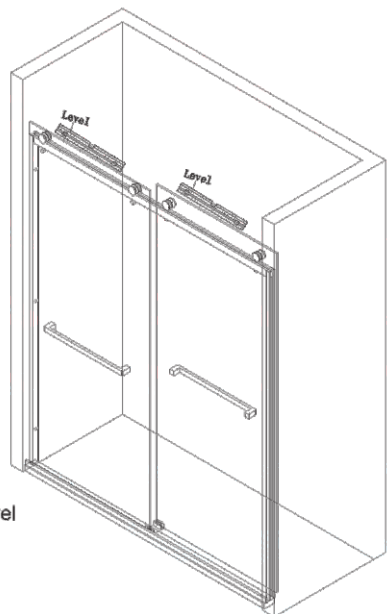
X6



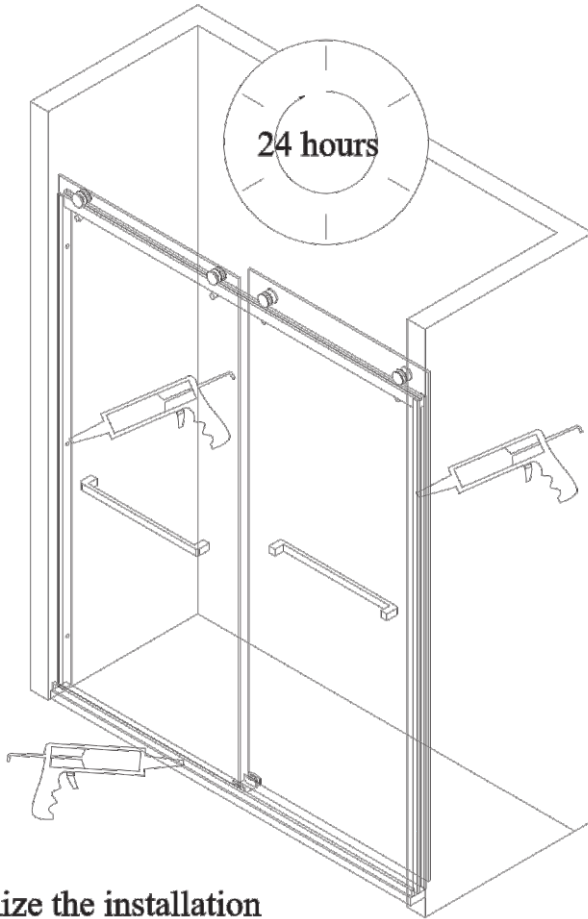
Roller

back side

Eccentric connector,
Turn the eccentric
fitting to adjust the door level



**DO NOT USE THE ENCLOSURE
FOR 24 HOURS AFTER SEALING**



Step C: Finalize the installation

Test the shower door to ensure all functionalities are properly met. Apply silicone sealant to the gaps along the shower door frame and base (threshold) for better stability and water resistance. Allow 24 hours for the sealant to solidify.

Tips:

- If any parts are missing, please reach out to Info@mosweet.com for assistance
- If you encounter any difficulties while installing the shower door, do not hesitate to reach out to info@mosweet.com or <https://mosweet.com/technical-support>, and navigate to the Milano shower door installation guide for the latest updates.

Thanks for choosing MoSweet Shower Doors!

Product Maintenance Guidelines

Glass Maintenance:

- Routine Care: To preserve the quality of your glass shower products, wipe them down with a soft cloth after every use.
- Cleaning: Rinse and clean the glass with a soft cloth or squeegee to prevent soap buildup and water spots. Note that hard water can etch the glass surface over time if not cleaned properly.
- What to Avoid: Never use abrasive cleaners, cleaning products with scouring agents, bristle brushes, or abrasive sponges, as they may scratch the glass.

Hardware Care:

- Routine Care: Wipe metal parts with a soft cloth after each use to maintain a lasting finish.
- Cleaning: Avoid abrasive cleaners or products containing ammonia, bleach, or acid. Immediately rinse any accidental use of such products to prevent finish damage (peeling or corrosion).
- Special Instructions for Polished Finishes: After cleaning, rinse thoroughly and dry with a soft cloth. Stainless steel surfaces should be cleaned at least once a week.
- Applying Cleaner or Polish: When using stainless steel cleaner or polish, apply in the direction of the grain to avoid scratches.
- What to Avoid: Never use abrasive sponges, cloths, steel wool, or wire brushes as they can permanently scratch the surfaces.

Important Note:

Regular inspections of the glass and hardware for misalignment, secure attachment, and potential damage are crucial for extending the life of your door. For any questions or concerns, please contact MoSweet®.



Please call Toll-Free Customer Service: 1-833-667-9338



www.mosweet.com

info@mosweet.com



