



GOOD SHEPHERD
EPISCOPAL CHURCH & SCHOOL
TEQUESTA, FLORIDA

Parish Profile

Good Shepherd Episcopal Church and School

400 Seabrook Road • Tequesta, Florida • GoodShepOnline.org



Welcome!

Good Shepherd is a community—a ministry of prayer and belonging, guided by gratitude for God’s gifts and affirmed by the love of Jesus Christ.

Our parishioners offer thanks for this community through service, gifts, and their own words:

“There are wonderful servants of God present in this parish.”

“I’m thankful for the love of this family and so many opportunities for spiritual growth.”

“Good Shepherd is intentionally welcoming of all people. We pray for our enemies. We care about the world.”

“I’m thankful for the open arms and hearts of this place. I matter here. A spiritual path opened for me as an individual.”

“It is family to me.”

“This really is a warm, caring place for each of us.”

“We are friends in Christ!”

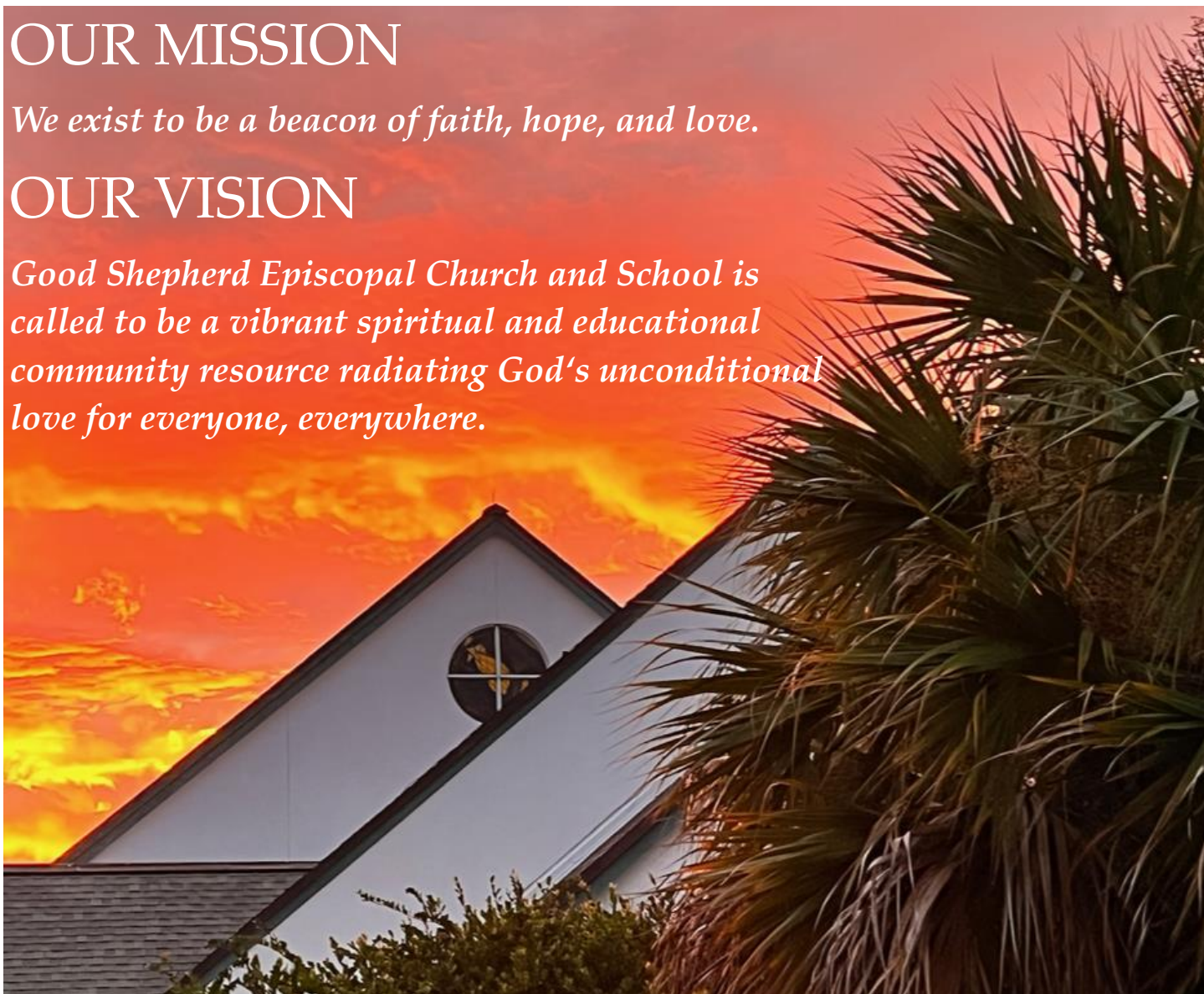
These pages offer some insight about our community and our ministry. We also provide a comprehensive demonstration of mission and ministry on our website GoodShepOnline.org. We hope you’ll visit.

OUR MISSION

We exist to be a beacon of faith, hope, and love.

OUR VISION

Good Shepherd Episcopal Church and School is called to be a vibrant spiritual and educational community resource radiating God's unconditional love for everyone, everywhere.



“All we are and all we have come from God.”

That is what we believe. We learn it in Sunday School, we hear it during worship, and we see it play out day after day in our interactions with the community and with each other. Every happiness, every sorrow, a perfect sunset or a tearful memory, every birth, death, joy and pain. These are all conditions of our humanity and gifts from God, *every single one of them* - and we are richer for having them.

Good Shepherd is a caring and committed parish that has embraced this ethos. We offer comfort and support that

often cannot be found anywhere else. We provide opportunities to grow in the faith and love of Jesus' powerful message. Through worship we are affirmed and redeemed. We reach out to help others. We encourage faith in God. We know we are not alone. We are guided by ancient truths, while embracing our intergenerational community that meets people wherever they are in their faith journey. This is the unique role of our church today.

Thank you for considering Good Shepherd as you are called to your next parish home.



Ministry at Good Shepherd is recognized in four major areas:

Worship

We love worship in its many styles and traditions. As a diverse parish, we see the importance of offering services and music that speak to a variety of preferences from formal traditional Eucharist, to more casual outdoor services in school, in nature, on a hiking trail, or online.

Connect

Support ministries like Helping Hands and GriefShare help us to establish connections with people who need it most. Our Newcomers' ministry works to welcome those looking for a church home, and every year we celebrate Good Shepherd and our caring nature with our annual fundraiser Artie's Party which fully funds outreach ministries for a year.

Grow

Grow Ministries offer opportunities for all ages to grow spiritually through programs like Bible Study, Theological Book Study, Youth Group, Sunday School, Sunday Forum, Guided Labyrinth walks, and Green Spirits Earth Stewardship.

Serve

Pennies For Heaven Thrift Shop is a treasured community resource. Food Pantry and Pastoral Care minister to the parish and to our community. Volunteering in any area helps people find purpose and meaning in the work of the Lord.

OUR HISTORY

Good Shepherd Episcopal Church held its first service on May 23, 1960 and 62 years later we are thriving.

Our legacy begins in 1896 when a group of settlers came together to form the first Episcopal church in this part of Florida: St. Martin's Episcopal Church. Six decades later, residents met and formed what is today known as the Episcopal Church of the Good Shepherd. With this legacy comes the beautiful hand-carved altar, when St. Martin's closed due to changing populations, the church and altar were shipped on railcar to Ft. Lauderdale. The altar then became a part of various mission churches in our diocese and ultimately came back 'home' to Good Shepherd where it currently resides in our chapel.

Our first rector (1958-1964), Reverend Elmer L. Allen, was responsible for securing St. Martin's Altar as well as having Good Shepherd become a fully-accredited parish (1961) in the Diocese of Southeast Florida. Later, Reverend James Rasnick (1964-1975), broke ground on

a new building (1964) which would be the sanctuary until 2007. Reverend Donald Krickbaum (1976-1988) followed Fr. Rasnick, and celebrated the 25th anniversary of the church in Tequesta. Our longest tenured rector, Reverend Robert Taylor (1989-2015) was responsible for initiating new ministries, raising capital for a new sanctuary, and establishing the Good Shepherd School.

The Reverend Dr. Douglas F. Scharf (2017-2022), led our church through the pandemic with excellent pastoral and administrative skills. He provided strong vision, leadership, and inspired biblical teaching.

Good Shepherd Episcopal Church enjoys generational membership and we are grateful to the founding members for cultivating a culture of commitment and love for this place — grandparents parents and children call Good Shepherd their church home. We are both custodians of the history of the Jupiter-Tequesta community, and a vital and integral part of its life today.



*We are a church built
on a foundation of
faith, where all are
welcome at
the table of the Lord.*

LOCAL COMMUNITY

Good Shepherd Church and School enjoy a desirable location in the Jupiter/Tequesta area of northern Palm Beach County, Florida. These communities maintain a small-town atmosphere and are accessible to larger Florida cities, such as Miami and Orlando.

Bordered by the Loxahatchee River Basin, our area is rich in green spaces which offer diverse opportunities to relax outdoors. State parks such as Riverbend, the site of the Second Seminole Indian War, and Jonathan Dickinson, the largest state park in southeastern Florida, provide immense spaces to enjoy nature trails, kayaking and equestrian activities. Fishing is another year-round activity that is a mainstay of residents and visitors alike. For those who favor scuba diving, snorkeling, and paddle boarding, options abound all along our coast.

Some parks also feature outdoor cultural events, including the Shakespeare-by-the-Sea open-air theater production in Jupiter, a summer tradition.

The cultural scene is unrivaled with the Carbonell-awarded Maltz Theater in Jupiter, or just 20 minutes south, the Kravis Center of

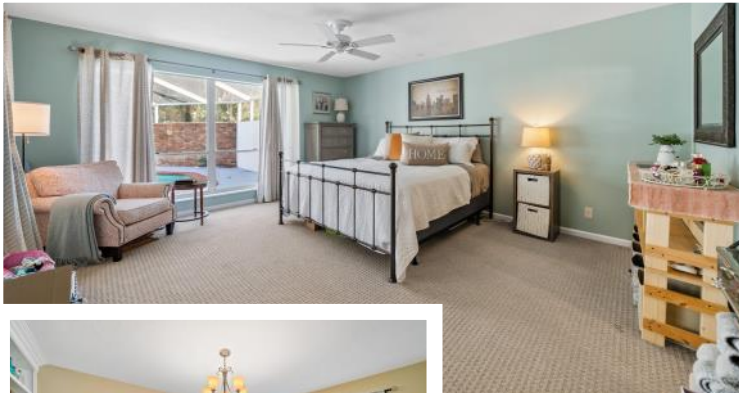


the Performing Arts with year-round shows and events. The iconic Jupiter Lighthouse dominates the skyline in town and, together with the Lighthouse Museum, is on the National Register of Historic Places. A climb to the top of the lighthouse offers sunset tours and one of the best views of the town.

For sports enthusiasts, professional Spring Training teams play at Roger Dean Chevrolet Stadium, Spring Training home to the St. Louis Cardinals and the Miami Marlins. PGA National is home to the Honda Classic, one of the most popular stops on the PGA Tour. The event is a community event for people of all ages and was voted the “Most Fan First Event” on the tour.

Northern Palm Beach County offers access to excellent health care services.





- Located only two miles from the parish campus
 - Quiet, tree-lined sidewalk community
 - Four bedrooms, two and a half baths
 - Swimming pool in ample screened lanai
- Two car garage; property access from two roads
- Zoned for one of the state's most highly rated school districts
- Campuses of nationally recognized learning institutions, among which are Florida Atlantic University and the proposed future University of Florida are located here



GOOD SHEPHERD EPISCOPAL SCHOOL

In 1993 Good Shepherd School was established with a simple goal: to enrich the lives of children of all faiths. It was a humble start with just two preschool rooms but the parents and parishioners of the church envisioned so much more. The current building, which was constructed in 1997 and expanded in 2012, is evidence of their unwavering dedication.

Currently, the school serves 150 students from Pre-K 2 through grade 5. Our busy church and school work successfully together in sharing the parking and building spaces, and in coordinating their many activities and events.

We are passionate about Good Shepherd School being a critical part of the mission and ministry of the parish. Our parents are invited to attend chapel each Wednesday, filling our pews with families.

Head of School, Heather Vaughn, has been an active member of the church and school since 2006. She has been serving in various capacities as a parent of three alumni, to a Board of Trustees member. Heather is committed to deepening relationships between the church and school and is constantly evaluating growth so that our students LOVE to learn, and LEARN to love!

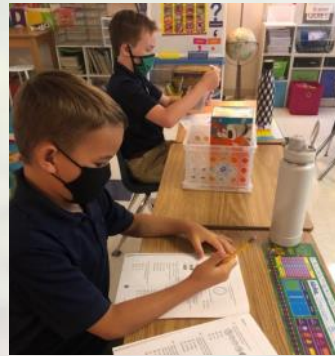
We are a proud member of:

FCIS—Florida Council of Independent Schools

NAES—National Association of Episcopal Schools

NAIS—National Association of Independent Schools

The School is a financially independent LLC and as such, its operations have no direct bearing on the Church operating budget, with the exception of a few minor shared campus reimbursements and lease payment.





WE ARE STEWARDS OF GOD'S GIFTS

We have, as a congregation, contemplated our relationship with God as it relates to our possessions and as we prayerfully discerned how God was calling us, we developed a Generosity Statement. Good Shepherd seeks to embrace a giving model where our generosity spans every moment; a place where we are not dependent on a 90-day window of time to ensure we have the funds to support the ministries that serve not only our church family, but the community at large. We look to a plan that is based on “Today, Tomorrow & Forever”, focusing on operating budgets, projects, and legacy giving.

We believe our generosity comes not just from tradition or a feeling of obligation, but from a place of true gratitude. We live in an ever-changing world and our work is more important than ever. Examining what is meaningful in our lives leads to the true meaning of gratitude. This Generosity Statement serves as a reminder, or perhaps a *pledge*, for each of us to be aware that, “All we are and all we have come from God.” Visit our Giving Page online for the full Generosity Statement and more about giving.

2022 Finances

- ♦ Good Shepherd has a 2022 budget of \$1,116,841. 60% of the budget is funded by stewardship, 7% by thrift shop income and 33% comes from other income.
- ♦ The value of the investment portfolio at the end of 2022 was \$1,339,385.
- ♦ In 2018, the church purchased an adjacent residential property for \$376,655, which has significantly increased in value.
- ♦ Balance Sheet of \$2,213,134
- ♦ The church does not have any debt.





OUR FUTURE!

At Good Shepherd we like to say, *"We have a place for you,"* and we really do! We want to continue this message into the future! From the moment you walk in, we enjoy welcoming you and supporting your life in Christ through worship, fellowship, education and small groups. We remain committed to our mission to be a beacon of faith, hope and love to everyone through our ministries, organized in four major areas; WORSHIP, CONNECT, GROW and SERVE. We encourage all parishioners to explore how they feel most called to serve.

We are a community where people feel safe to come and worship, continually reminded of God's promises, and encouraged to live out the gospel teachings in our daily lives. Church Leadership assists members to identify and develop their spiritual gifts and use those gifts to strengthen their faith thereby serving God in their earthly calling, both within the church and our greater community.

Our recent parish survey describes us this way:

Key indicators of Satisfaction and Energy express a Transformational climate. Relative to other churches, our metrics include:

- Conflict management (97%)
- Morale (94%)
- Engagement in education (93%)
- Readiness for ministry (91%)
- Hospitality (88%)
- Governance (87%)
- Spiritual vitality (72%)
- Music and worship (48%)

Of the latter, worship in general ranked highly (92%); the music program in particular was the sole area where Good Shepherd underperformed (17%) relative to other congregations.

Good Shepherd Church and School's future is bright! We have a special ability to allow all people with many different views to come together in their individual walks with God. Our new leader will need to continue to foster a family atmosphere while maintaining a close relationship between the Church and School. Our next Rector should be a beacon for Good Shepherd in the larger community.

OUR NEXT RECTOR

RECTOR SEARCH PRAYER

Most loving God, you know us better than we know ourselves. You know the needs of our congregation at Good Shepherd. May the Holy Spirit come upon us. May the Holy Spirit send a rector to Good Shepherd who will lead us forward to a deeper relationship with God the Father, Jesus, the Son, and the Holy Spirit. **Amen**

May the LORD, the GOD who gives breath to all living things, appoint someone over this community to go out and come in before them, so that the LORD's people will not be like sheep without a shepherd. Numbers 27:16-17

PREACH

Boldly proclaim the Gospel to a theologically diverse congregation that embraces a way to live together and connect with respect and consideration. We see value in the skill of opening hearts through empathy and perspective centered on one faith, one Lord, one Baptism. Faithfully administering the sacraments and serving with love and compassion are essential to this role.

TEACH

Inspires and educate with compelling teaching to clearly relate the Word of God to our lives and grow opportunity for spiritual formation.

PRAY

Possess a deep spirituality and great personal faith in and love for Jesus Christ. Humbly pray with and for us in corporate worship, communication, and pastoral care.

LEAD

Recognize the variety of talents in our community and raise leaders for the work at hand and to the greater glory of God.

We are a faith community that emphasizes God's presence in all places and strives for goodness in every endeavor.

We are looking for a servant leader who is a caregiver and nurturer of all of our resources—spiritual, financial and parish family, this place we call home.



SEARCH COMMITTEE

Peggy Greene / Committee Chair
Michael Grashof / Committee Vice-Chair
Beth Bohnsack
Julie Brown
Marcia Cassidy
Dimitri Chimerakis
Sandy English
Patti Hamilton
Kevin Johnson
Meredith Smith
Janice Thomas
Bill Unger



VESTRY

Heather Graham / Senior Warden
Mike Howard / Junior Warden
Mark Chittum / Clerk
Mike Greene / Treasurer
Ian Anderson
Carol Block
Beth Bohnsack
Beverley Cunningham
Brad Davis
George Hines
Akin Owosina
Tracy Smith
Matt Ulman

STAFF

The Rev. Derek M. Larson TSSF / Associate Rector
Merike Seely / Parish Administrator
Heather Vaughn / Head of School
Timm C. Johnson Reynolds / Music Director
Jo Wood / Director of Hospitality & Facilities
David Dixon / Director of Family Ministries
Lynn Evans / Business Manager
Mary Lou Crifasi / Office Coordinator
Beth Long / Thrift Shop Manager
Erik Pariseleti / Technology Coordinator
Evelyn Seely / Digital Media Assistant



GOOD SHEPHERD
EPISCOPAL CHURCH & SCHOOL
TEQUESTA, FLORIDA

400 Seabrook Road, Tequesta, FL 33469
561-746-4674
GoodShepOnline.org

To apply for the position of Rector of Good Shepherd Episcopal Church and School:

Send materials to :

The Rev. Canon Jason Roberson
Canon Missioner for Congregational Vitality & Transitions
jason@diosef.org
786-682-5354
555 NE 15 Street, Suite 934B, Miami, FL 33132
diosef.org

Good Shepherd is located in the Diocese of Southeast Florida
The Rt. Rev. Peter Eaton, Bishop