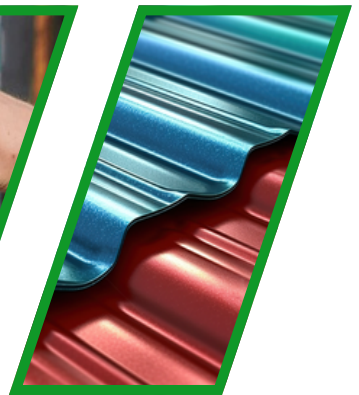




BUILD YOUR DREAM HOUSE WITH GELAN PAINT



GELAN PAINT

Dual-Action Paint & Rust Prevention



16 Liters

4 Liters

Contact Us



+63-976-1147-910



www.gelansolar.com/roof-paints



info@gelansolar.com



62A Mulawinan St. Lawang Bato
Valenzuela City.

GELAN PAINT

Dual-Action Paint & Rust Prevention

GELAN PAINT

- is a high-performance coating designed to protect, restore, and enhance the appearance of various roofing materials, such as concrete tiles, galvanized iron (GI sheets), and pre-painted metal.
- Typically formulated with acrylic resins (often described as "acrylic roof paint" or a "liquid rubber" type), this paint uses water as its primary solvent, making it an increasingly popular and environmentally conscious choice compared to traditional solvent/oil-based paints.



- High Coverage
- Easy Application
- Water-Based
- Odorless
- Good Whiteness
- Strong hiding Power
- Eco-Friendly
- Rubberized Texture

APPLICATION & LABEL

APPLICABLE TO

Rusty-Surface



Cement-Surface



Wood-Surface



Metal-Surface



- **Low Odor & Low VOCs:** They contain significantly fewer Volatile Organic Compounds (VOCs), making them safer for indoor use and better for air quality.
- **Faster Drying:** They typically dry to the touch in hours, allowing you to apply multiple coats in a single day.
- **Easy Cleanup:** Tools, brushes, and minor spills can be cleaned up easily with just soap and water, eliminating the need for mineral spirits or turpentine.
- **Non-Yellowing:** Unlike traditional oil-based alkyd paints, modern water-based formulas resist the common tendency to yellow over time, especially in areas with low sunlight.

AVAILABLE COLOR



For technical reasons connected with color reproduction and paint manufacturing, the colors shown may not match the exact paint color.

APPLICATION

How to Apply Gelan Paint for the Best Results



PREPARATION

Ensure the surface is completely clean, dry, and free of rust, grease, or peeling paint.

APPLICATION

Stir Gelan Paint well. Apply an even coat using a brush, roller, or airless sprayer.



MULTI-COAT

Two coats for coverage, the third for perfection.

A three-coat system is used for roof paints to ensure durability, proper coverage, and a higher-quality finish, particularly for specific colors, metallic coatings, or patterned effects. The extra coat provides a thicker protective barrier against weathering, ensures an even application where a single coat may be too thin, and is often required to protect the delicate flakes in metallic paints or achieve a specific high-gloss level.



Gelan Paint: The Ultimate Water-Based Protective Coating.

For superior adhesion and protection, always ensure the surface is thoroughly cleaned before application. Apply two uniform coats for a beautiful, durable, and rust-resistant finish that lasts!

PROJECT HIGHLIGHT



Bacoor, Cavite



BEFORE



Bacoor, Cavite



AFTER



Lawang Bato , Valenzuela City



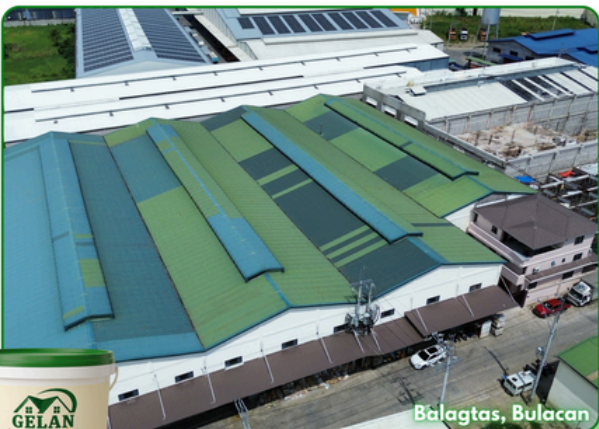
BEFORE



Lawang Bato , Valenzuela City



AFTER



Balagtas, Bulacan



BEFORE



Balagtas, Bulacan



AFTER



AVAILABLE COLORS & SIZE

16 LITERS



BLUE

RED

BEIGE

GREEN

4 LITERS



BLUE

RED

BEIGE

GREEN

TECHNICAL DATA

Principal Uses	For galvanized iron surfaces, pre-painted galvanized sheets, and unglazed roof tiles.	Theoretical Coverage	30sqm / 16L (single coating) is estimated for color beige on ideal roof condition and 50sqm / 16L (single coating) for other colors
Vehicle Type	Acrylic	Packaging	4-Liters and 16-Liters
Finish	Gloss	Clean-up Solvent	Water
VOC (±2.0 g/L)	12.3 g/L	Application	By brush, roller, or airless spray

For technical reasons connected with color reproduction and paint manufacturing, the colors shown may not match the exact paint color.



+63-976-1147-910



www.gelansolar.com/roof-paints



www.facebook.com/gelanroofing



62A Mulawinan St. Lawang
Bato Valenzuela City