

Food Sources In Brown County

1. Mother's Cupboard

646 Memorial Drive, Nashville, IN 47448
Food Distribution: Carry-out meals available

Monday – Saturday from 4:00 to 6:00 pm
Food pantry also available. No questions asked.

812-988-8038

[facebook.com/people/Mothers-Cupboard-](https://facebook.com/people/Mothers-Cupboard-Community-Kitchen-Inc/100064256696677/)

[Community-Kitchen-Inc/100064256696677/](https://facebook.com/people/Mothers-Cupboard-Community-Kitchen-Inc/100064256696677/)

Directions: From the Brown County Courthouse, turn on to E. Main Street go .6 miles. Make a left on Memorial Drive. Go another 400 feet, building is on the left.

2. Nashville United Methodist Church

36 S. Jefferson Street, Nashville, IN 47448
Food Distribution: 24/7 Little Pantry on the rear parking lot of the church
812-988-4666

www.facebook.com/NashvilleUMC/
Directions: From the Brown County Courthouse, head west on W. Main Street (Helmsburg Road), go two blocks and make a left on Jefferson Street. Church is on the right. Go around to back of church on alley to the Little Pantry.

3. North Salem Community Church

7718 State Road 46 East, Nashville, IN 47448

Food Distribution: 1 st Thursday of the month from 1:00 to 2:00 pm and 6:00 to

7:00 pm

812-325-7791 or 812-988-2786 (Call if there is an emergency.)

facebook.com/NSBrownCountyIN/

Directions: From the Brown County Courthouse, head south towards the intersection of IN-135 and State Road 46 East, turn left on to State Road 46 going east to Columbus for 8 miles to the church on the left.

4. The Pentecostals

(Loaves & Fishes Food Pantry)

60 Mt. Liberty Road, Nashville, IN 47448
Food Distribution: Thursday from 4:30 to 7:00 pm.

812-200-3136 (Delivery may be arranged upon request.)

[facebook.com/profile.](https://facebook.com/profile.php?id=100089128245360)

[php?id=100089128245360](https://facebook.com/profile.php?id=100089128245360)

Directions: From the Brown County Courthouse, head south towards the Intersection of IN-135 and State Road 46 East, turn left on to State Road 46 going east to Columbus. Go 5.5 miles and turn right on to Mt. Liberty Road/Valley Branch Road. Go .4 mile and turn left on to Mt. Liberty Road. Church is on the left.

5. St. Vincent de Paul of Brown County Food Pantry and Warehouse

2901 Long Lake Road, Nashville, IN 47448
Food Distribution: Monday and Saturday from 10:00 am to noon

812-988-8821 (Delivery arranged with a proxy agreement.)

facebook.com/SVdPBC/

Directions: From the Brown County

Courthouse, turn on to E. Main Street which becomes Old State Road 46 (about 2 miles), Turn left on Clay Lick Road, go 2.3 miles and turn right on Long Lake Road.

6. Salvation Army of Brown County

168 S. Jefferson Street, Nashville, IN 47448

Food Distribution: Wednesday and Friday from 10:00 to 1:00 pm

812-988-7019

facebook.com/browncountysalvationarmy

Directions: From Brown County Courthouse, head south on N Van Buren Street about 1/10 th of a mile, turn right on Pittman House Ln, go 338 feet and turn left at 2 nd cross street onto S. Jefferson Street. Destination is on the right.

7. St. David's Episcopal Church

11 IN-45, Morgantown, IN 46160

Located at the intersection of SR 45 and SR 135N in Bean Blossom, IN

Food Distribution: 24/7 Little Pantry on the parking lot. Pop-up food distribution on the parking lot from 3 to 5 pm each Thursday when weather permits. Look for the sign.

812-988-1038

facebook.com/BrownCountyFoodAlliance/

Directions: From the Brown County Courthouse, head north towards Indianapolis on IN-135 to Bean Blossom for 5 miles. St. David's is at the intersection of IN-135 and State Road 45 on the left. (Dollar General is at the same intersection.)

Food Sources Map and Driving Directions Courtesy of St. Vincent de Paul of Brown County



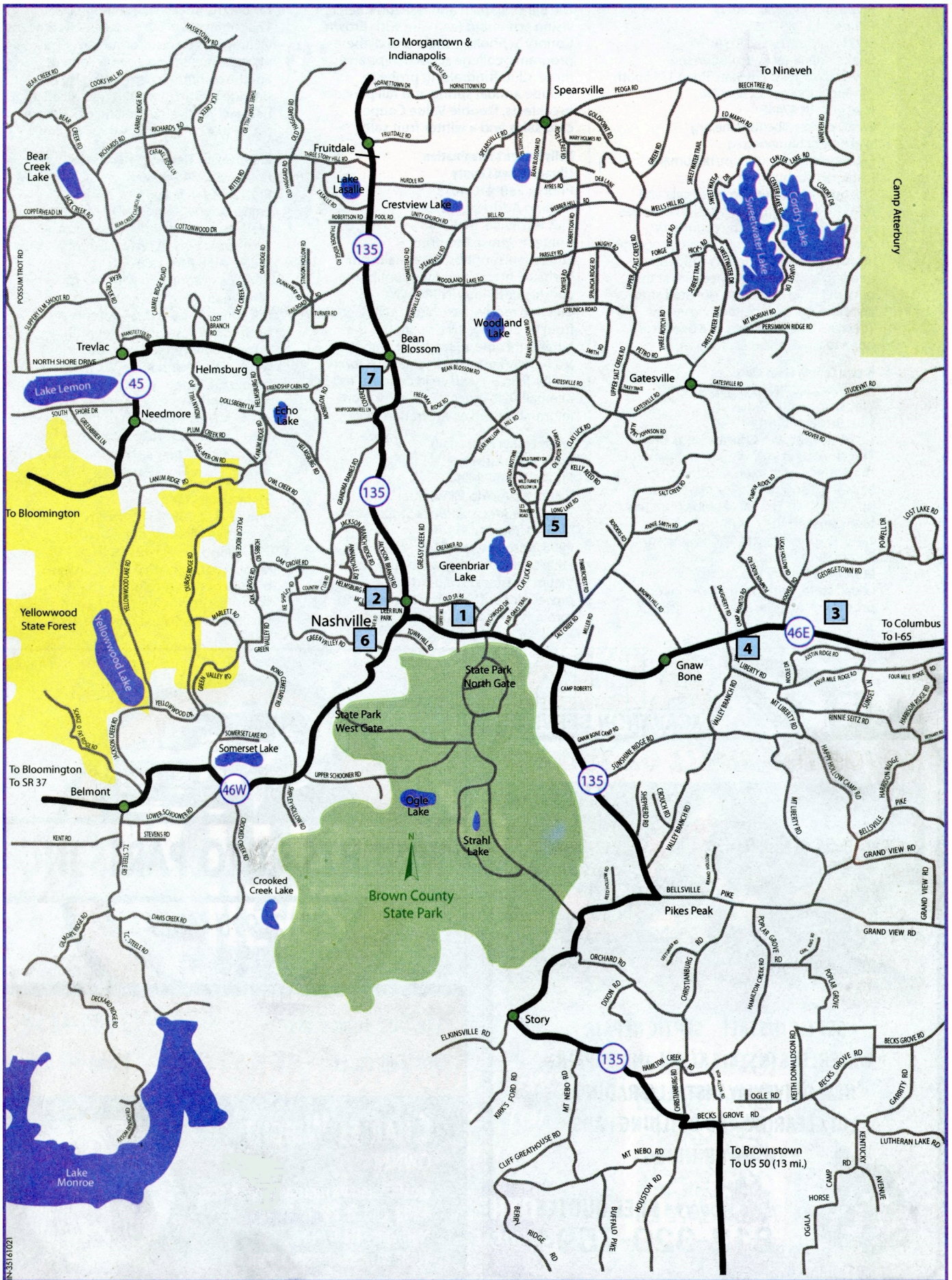
SOCIETY OF ST. VINCENT de PAUL
BROWN COUNTY FOOD PANTRY & DISTRIBUTION CENTER
812.988.8821

HELP US HELP OTHERS

www.stvincentdepaulbrowncounty.com

Hours: Monday and Saturday 10:00 am - Noon

NEED HELP OR INFORMATION? Call 812-988-8821 & leave a message. Voice messages are regularly monitored.



IN-251-61021