



ESTEEM
SECURE WIRELESS NETWORKING

ESTeem User's Manual
Models 195M-195H-195C

Manual Revision 3.0
July 2022

Author: _____

Date: _____

Name: Phil P. Marske

Title: Product Specialist

Approved by: _____

Date: _____

Name: Dan Tolley

Title: President

Electronic Systems Technology, Inc.

Db a ESTeem Wireless Modems

Site B

415 N. Roosevelt Street

Kennewick, WA 99336

Phone: 509-735-9092

E-mail: market@esteem.com

Web Site: www.esteam.com

Copyright© 2022 by Electronic Systems Technology, Inc.

All rights reserved. Printed in the United States of America. No part of this publication may be reproduced, stored in a retrieval system, or transmitted, in any form or by any means, electronic, mechanical, photocopying, recording, or otherwise, without the prior written permission of Electronic Systems Technology.

Electronic Systems Technology, Inc. dba ESTeem Wireless Modems, (hereinafter ESTeem) expressly warrants its products as free of manufacturing defects for a period of one year from the date of sale to first user/customer. THERE ARE NO OTHER WARRANTIES, EXPRESS OR IMPLIED AND THERE IS EXPRESSLY EXCLUDED ALL WARRANTIES OF MERCHANTABILITY OR FITNESS FOR A PARTICULAR PURPOSE. NO OTHER WARRANTY GIVEN BY ANY EMPLOYEE, AGENT, DISTRIBUTOR OR OTHER PERSON WITH RESPECT TO THE PRODUCT SHALL BE BINDING ON ESTEEM.

LIMITATION OF LIABILITY:

ESTeem's liability shall be limited to refunding of purchase price, repair or replacement of product. IN NO EVENT SHALL ESTEEM HAVE LIABILITY FOR CONSEQUENTIAL, INCIDENTAL, SPECIAL OR EXEMPLARY DAMAGES CAUSED DIRECTLY OR INDIRECTLY BY THE PRODUCT, INCLUDING BUT NOT LIMITED TO ANY INTERRUPTION OF SERVICES, LOSS OF BUSINESS OR ANTICIPATORY PROFITS. IN NO EVENT SHALL ESTEEM BE LIABLE FOR ANY DAMAGES WHATSOEVER IN EXCESS OF THE PURCHASE PRICE OF THE PRODUCT.

In the event that a unit or part requires replacement or factory servicing, the following conditions apply:

- a) Customer must obtain from ESTeem an authorized RMA (Return Materials Authorization) Number before shipment of product or parts to ESTeem for any reason;
- b) If the whole unit is shipped, it must be in its original carton and shipping components, or a carton and shipping components supplied by ESTeem, or if parts only are shipped, they must be packaged and cushioned so as to prevent damage in transit and shipped freight prepaid;

PRODUCT WILL BE CONSIDERED OUT OF WARRANTY IF:

- a) If the product is damaged due to improper or abnormal use, abuse, mishandling, accident or improper maintenance or failure to follow operating instruction;
- b) If the product is defective as a result of sand, dirt, or water damage;
- c) If any factory-sealed enclosure has been opened or shows evidence of an attempt to be opened;
- d) If defects or damage are caused by the use of unauthorized parts or unauthorized service;
- e) If the product has had its serial numbers altered or removed.

Warranty repair form must be accompanied by proof of user's purchase of unit. Product must be shipped to the manufacturer at the following address:

ESTeem Wireless Modems
415 North Roosevelt Street
Kennewick, Washington USA 99336

ADDITIONAL SERVICE:

If ESTeem releases an improvement update to firmware internal to the ESTeem unit during the 90-day period after the unit was purchased by the first user/customer, ESTeem will update the applicable unit with the revised version at no charge other than for UPS handling and shipping to and from your location to the ESTeem factory. Return of any such item must be accompanied with proof of purchase.

CHAPTER 1 – Introduction

Before You Begin	1-1
Model 195C/M/H Overview	1-1
Serial Applications	1-1
Ethernet Applications	1-2
Sensor Applications	1-2
Legacy Model 192 Applications	1-2

CHAPTER 2 – Starting Out

Three Configuration Phases	2-1
Model 195C/M/H Hardware Configuration	2-2
Software Configuration	2-3
Model 195C/M/H Front Panel	2-4

CHAPTER 3 – Example Applications

Modes of Operation Description and Examples	3-1
Transparent Point to Point	3-1
Transparent Multipoint	3-3
PLC Emulations	3-4
Programming Examples	3-5
Using Model 195C/M/H Configuration Utility	3-5
Example 1 – Transparent Point to Point	3-6
Example 2 – Transparent Point to Point with Repeater	3-7
Example 3 – Transparent Multipoint	3-8
Example 4 – PLC Emulation Mode	3-9

CHAPTER 4 – Repeating Features

Configuring Route and Append Tables	4-1
Reading Route and Append Tables	4-3
Clearing Route and Append Tables	4-3

CHAPTER 5 – Ethernet Applications

Programming Through Ethernet Port	5-1
Ethernet Bridge Mode	5-2
IP Address Routing Configuration	5-3
Using Ethernet Port as SDI	5-7

CHAPTER 6 – Utilities and Features

Model 195C/M/H Configuration Utility	6-1
Configuration Tab	6-1
Read Modem Configuration	6-3
Write Modem Configuration	6-4
Reset Modem	6-4
Factory Defaults	6-4
Modbus Monitoring	6-4
Reading Receive Signal Strength (RSSI)	6-4
ModbusTCP Tables	6-4
Save and Load Configuration File	6-5
Update Firmware	6-7
Programming Console	6-7
Diagnostics	6-7
Spectrum Analyzer	6-8
MURS Frequency Applications	6-8

CHAPTER 7 – Antenna Setup

Coax Cables	7-1
Weatherproofing	7-2
Grounding	7-2
SWR Testing	7-2
Example Antenna Configurations	7-3
Model 195C Cabinet Mount	7-3
Model 195C Pole Mount	7-4
Model 195M Cabinet Mount	7-5
Model 195M Pole Mount	7-6

APPENDIX A – Software Commands
APPENDIX B – Interface Ports

Model 195C/M/H Front Panel Diagram	B-1
Ethernet Port	B-2
RS-232 Ports	B-2
RS-485 and RS-422 Ports	B-3
4/20mA Sensors	B-3

APPENDIX C – Model 192 Integration
APPENDIX D – FCC/DOC Information
APPENDIX E – Security

Enable 256-bit AES Encryption	E-1
-------------------------------	-----

APPENDIX F – 195C Specifications

APPENDIX G – 195M Specifications

APPENDIX H – 195H Specifications

Before You Begin

Thank you and congratulations on your purchase of the ESTeem Model 195M (150-174 MHz), 195H (217-220 MHz) or 195C (450-470 MHz) Wireless Radio Modem! This manual was written to help both the first time and advanced user of the 195M/H/C to configure the wireless modem for your application.

The ESTeem 195M/H/C wireless modems are programmed through their Ethernet interface for both serial and Ethernet applications. To keep the manual useably short, many of the application descriptions and programming details assume the user has a good working knowledge of the following network concepts:

- General Ethernet networking and the configuration of LAN topologies
- Common Ethernet terminology and acronyms
- TCP/IP network protocol structure and how to configure TCP/IP networks and subnets
- How to identify and set the TCP/IP address on your computer
- Have administrator privileges to the computer and network you are configuring
- You must be familiar with using web browser software such as Internet Explorer, Chrome or Firefox



Figure 1: ESTeem Model 195M/H/C Series

Throughout this User's Manual are "**Technical Tips**" in boxes like this that have been added to help answer the most commonly asked questions.

If you are unfamiliar with any of the above networking concepts, you may need to contact your network administrator for assistance.

Model 195M/H/C Overview

The ESTeem Model 195M/H/C are wireless transceivers that can be used to build many types of Wireless Local Area Networks (WLAN). The ESTeem 195M/H/C series have multiple serial (RS-232, RS-422 and RS-485), Ethernet and 4/20mA sensor interfaces. The Model 195M/H/C can be configured for multiple modes of operation depending upon the needs of the wireless and wired network. The following interface configurations are provided as an overview of the basic network types, as all possible network configurations cannot be listed. For further help in selecting the correct network type, please refer to Chapter 3 of this User's Manual or call Customer Support at 509-735-9092.

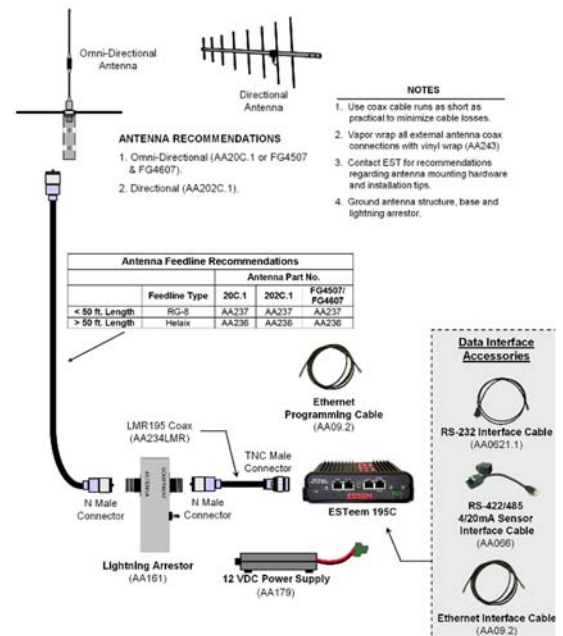


Figure 2 – Cabinet Mount Configuration

Serial Applications

A Model 195M/H/C can be configured for point-to-point, multipoint or PLC emulations through software configuration changes. The following are brief descriptions of the Serial Device Interface (SDI) configuration modes. For detailed descriptions and suggested applications for each mode, please refer to Chapter 3.

RS-232 – The ESTeem 195M/H/C has two (2) RS-232 data ports. One RS-232 port (Port 4) is available for use when the ESTeem 195M/H/C is remote pole mounted, but only supports the basic three wire (Transmit, Receive and Ground) connection without any handshaking. The second RS-232 port (Port 3) has full hardware handshaking through the request to send (RTS) and clear to send (CTS) lines. Both RS-232 ports are software configurable from 2,400 to 115,000 bps.

RS-422 – The ESTeem 195M/H/C has a single RS-422 data port (Port 2). The RS-422 data port is shared on the front panel with the 10/100 Mbps Ethernet interface. The RS-422 interface is typically used for long distances in serial applications up to 4,000 feet distant using baud rates software configurable from 2,400 to 115,000 bps.

RS-485 – The ESTeems have a single, two-wire RS-485 data port (Port 1). The RS-485 data port is shared on the front panel with the 4/20mA sensors. The RS-485 interface is typically used for long distances to 4,000 feet at baud rates software configurable from 2,400 to 115,000 bps.

Ethernet Applications

The ESTeem 195M/H/C has a 10/100 Mbps Ethernet interface (Port 2) that is used as both a data port and the primary programming port. The primary use will be as a slow speed (12.5 Kbps) Ethernet bridge to remote locations to gather data from remote Ethernet devices. Each of these modes of operation are described in detail in Chapter 5.

Sensor Applications

The ESTeem 195M/H/C have four (4) 4/20mA sensor inputs. The sensor inputs can be read out of the 195M/H/C through their ModbusTCP address, a software command or the Model 195M/H/C configuration utility. For complete details on the configuration and operation of the sensor input, please refer to Appendix B – Interface Ports.

Legacy - Model 192 Applications

The ESTeem 195C can be integrated with our legacy ESTeem Model 192C or Model 192CHP, while the 195M can be integrated with Models 192M or 192MHP networks. The procedure for integrating the new 195C or 195M in an existing Model 192 network can be found in Appendix C of this User's Manual.

To begin setup of your wireless Ethernet network, continue to Chapter 2 - Staring Out of this User's Manual.

Overview

There are three main phases to prepare the ESTeem 195M, 195H or 195C for operation in a wireless network:

Phase 1 - Determine the correct mode of operation for the ESTeem in the wireless network. The ESTeem 195M/H/C have multiple modes of operation and determining the correct mode of operation is the first step. Chapter 3 of this User's Manual details the modes of operation and applications where each would be used.

Phase 2 - Program the ESTeem for operation in the wireless network. Once the correct mode of operation for the ESTeem has been determined, the 195M/H/C will be programmed for the wireless network. To simplify the programming of the Model 195M/H/C, ESTeem has created a software utility called the ESTeem 195 Narrow Band Configuration Tool which is used to configure the wireless modem for use in the network. The configuration utility is a software feature of the ESTeem Discovery Suite and can be downloaded from the ESTeem web site (www.esteem.com). See Software Configuration section below or Chapter 6 (Utilities and Features) of this User's Manual will guide you in the installation of the software and detailed operating guide.

Phase 3 - Install the ESTeem hardware and test communication. After the ESTeem Model 195M/H/C's programming, install the hardware in each remote location. Chapter 7 of this User's Manual describes the antenna specifications, mounting options and the configuration of the pole mounting hardware for the ESTeem. For instructions using the link diagnostic tool for testing and troubleshooting the wireless link, refer to Chapter 6 (Utilities and Features).

The following basic hardware layouts, configurations and software installations will allow you to proceed with the programming and testing of the wireless network.

Model 195M/H/C Hardware Layout

To begin the configuration, unpack the ESTeem Model 195M/H/C shipping boxes and locate the items below for initial configuration. Take a few minutes to inventory your equipment before you proceed. Report any missing or damaged items to Customer Support (509-735-9092) as soon as possible. Each node in your ESTeem Model 195M/H/C's network may have different hardware components based upon the final installation location (i.e. Outdoor, Indoor, Point-to-point or Multi-Point). Antenna types, cable lengths, power supplies may be different, but the following items will be required for basic setup:

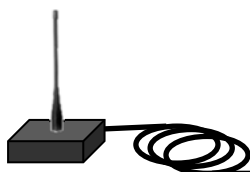
Model 195M/H/C



Power Supply
(AA179 Displayed)



Test Antenna
(AA19C Displayed)



Ethernet Cable



Note: Your accessory model numbers may vary from the above, but you will need to locate each of above items to continue configuration.

Model 195M/H/C Hardware Configuration

The following steps should be completed to begin configuration of the ESTeem Model 195M/H/C:

1. Connect the antenna cable to the TNC connection on the ESTeem Model 195M/H/C (Figure 1).
2. Connect the power supply and Ethernet cable to the ESTeem. Complete the Software Configuration below and proceed to Chapter 3 to begin programming.

Technical Tips:

1. Configure the Model 195M/H/C prior to mounting.
2. Attach antenna to the Model 195M/H/C before powering up.

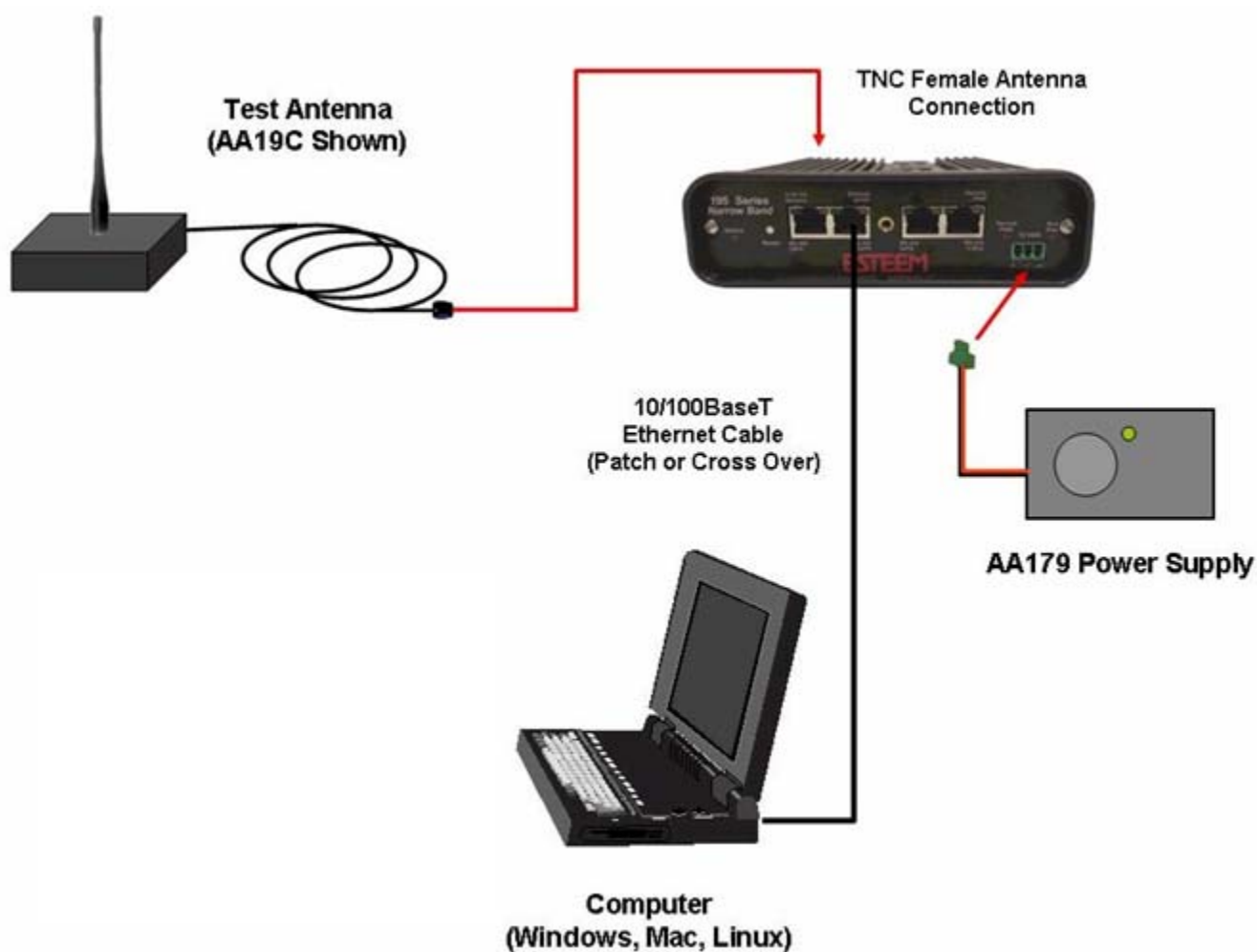


Figure 1 – Basic Configuration Diagram

Software Configuration

The ESTeem Narrowband Configuration Utility (a component of the ESTeem Discovery Suite) will allow easy access to the configuration, monitoring and diagnostics for the ESTeem Model 195M, 195H and 195C.

Installation

The Discovery Suite can be downloaded for free download from the ESTeem web site (<http://www.esteem.com>).

Technical Tip: If your computer is configured for DHCP and not attached to the network, you will need to assign a static IP address to program the 195M/H/C.

1. The Discovery Utility is a Java™ based application compatible with any computer operating system (Window, Linux, Mac, etc). The application requires two (2) additional support files to operate:

Java – Downloadable from <http://www.java.com>. The version required will be based upon your operating system.

Note: The installation and updates from Java may try and install additional web browser toolbars. Uncheck the optional installation if they are not desired.

Npcap – Downloadable from <https://nmap.org/download.html>. Select the latest stable version of the utility for your operating system. The Npcap free addition is supported up to Windows version 10. The version required will be based upon your operating system.

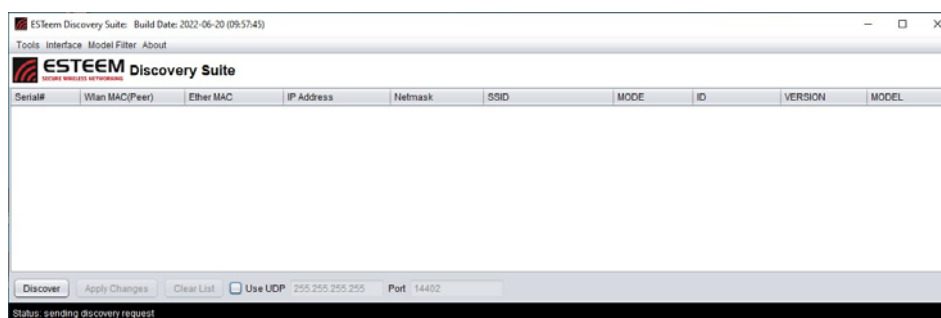


Figure 2: ESTeem Discovery Suite Utility

2. Once both the above programs have been installed, save the Discovery Utility file to any location on your computer such as the Desktop. Double click the program file name and Figure 2 will be displayed.
3. Connect the ESTeem 195M/H/C modem to your computer either directly to the Ethernet card or through a Switch using a CAT-5e Ethernet cable. The Ethernet port supports Auto-Negotiation, so either a patch cable or crossover cable will work. Press the *Discover* button. This discovery utility and imbedded ESTeem Narrowband Configuration Utility will be used throughout the remainder of the User's Manual.
4. The ESTeem 195M/H/C will be displayed (Figure 3). If the ESTeem is not on the same IP subnet as the computer, double click on the IP, Netmask or Gateway and make the necessary changes. Press the *Apply Changes* button when complete.

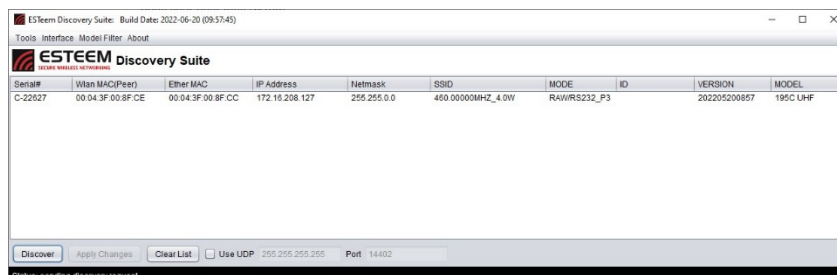


Figure 3: Discovery Found Radio

- If changes were made to the IP address, you will need to press the *Discover* button again to show the changes. Right-click on the Horizon and select *195NB Setup Tool* button to begin programming.

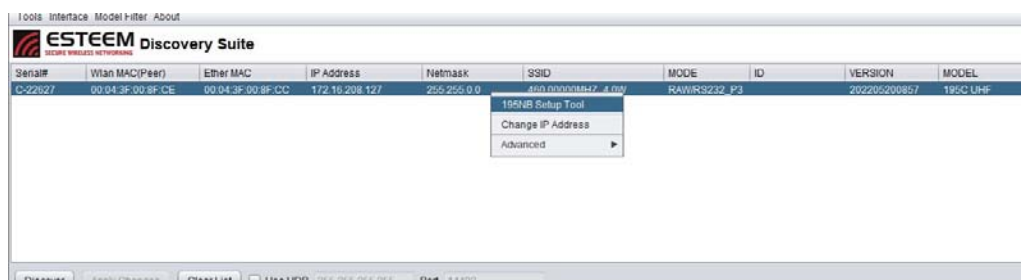


Figure 4: Opening Radio Configuration Software

Model 195M/H/C Front Panel Layout

The single Status LED has multiple colors representing the following:

Off – No Activity

Blue – Model 195M/H/C has established a wireless link

Red – Model 195M/H/C is transmitting an RF packet

Green – Wireless modem is receiving an RF signal from another 195M/H/C.

Amber – Wireless modem is receiving an RF signal from a source other than a 195M/H/C. This could be RF noise or another radio transmitter on the frequency of the 195M/H/C.

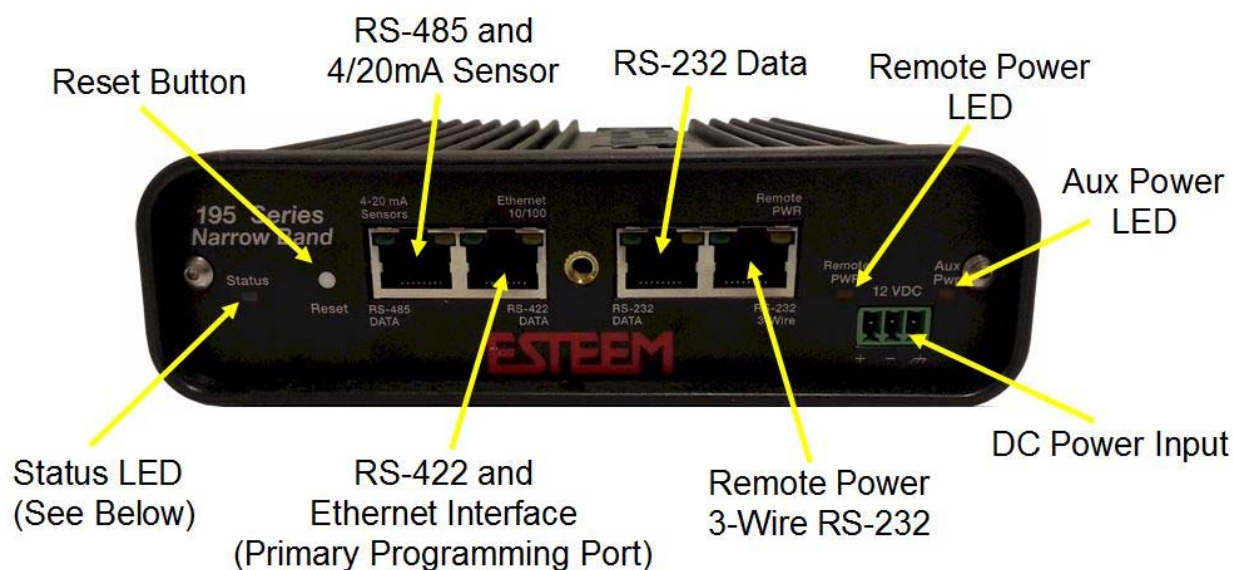


Figure 5: Front Panel

Modes of Operation

The ESTeem Model 195M, 195H and 195C can be configured for multiple serial and Ethernet applications. Determining the correct mode of operation for the ESTeem is the first step in creating a reliable wireless network. This chapter will explain each mode of operation, provide example applications and detailed programming information for each mode. Please review the following modes of operations. If you do not see an example of your application, please contact ESTeem support at 509-735-9092 for help in selecting your mode of operation.

Transparent Point to Point Application

The most commonly used mode of operation with the ESTeem Model 195 series (195M/H/C) is the transparent mode. The transparent mode will pass serial or Ethernet data between two (or more) wireless modems as if they were connected by a cable. Point to point operation is when two serial or Ethernet devices are transferring information between either other, directly or through a repeater (Figures 1 and 2). The type of serial data interface (RS-232, RS-422, or RS-485) on either end of the wireless link is configurable and can be independent on each side. For example, the Main Office in Figure 1 can be configured for RS-232 operation, while the serial port at the remote site can be configured for RS-485.

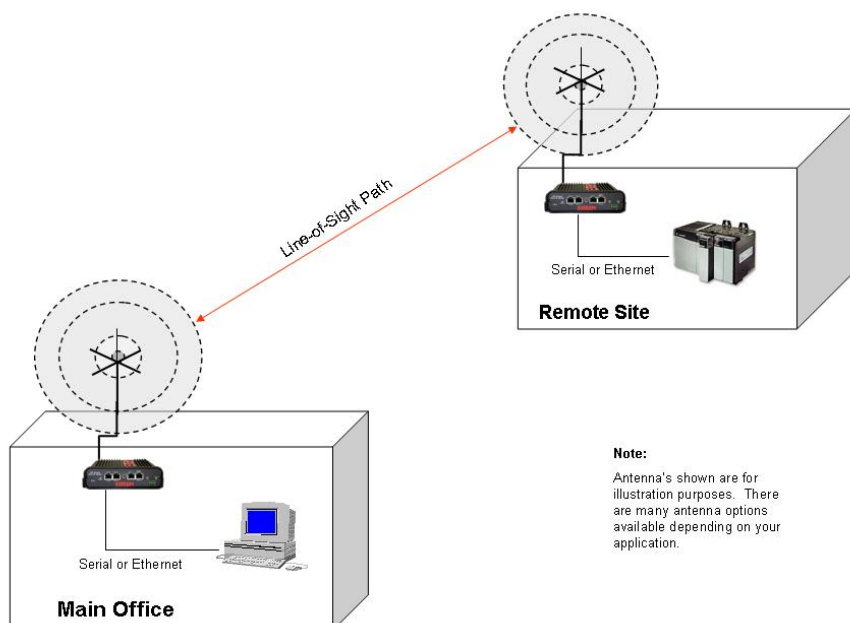
Technical Tip: The 195 series radios can support both serial (RS-232, RS-422 & RS-485) and Ethernet interfaces but does NOT translate between protocols. The 195 radios cannot be used for serial at one side of the connection and Ethernet at the opposite side.

Example Applications

- Point to point serial interfaces (RS-232, RS-422 or RS-485)
- Point to point wireless Ethernet communication devices
- Remote Supervisory Control and Data Acquisition (SCADA) networks

Applications Where Transparent Mode Not Used

- Multiple Remote Locations
- PLC Emulation Networks (see PLC Emulation below)
- Connections to large Ethernet traffic networks such as large office buildings or plant networks



Note:
Antenna's shown are for illustration purposes. There are many antenna options available depending on your application.

Figure 1: Point to Point Example

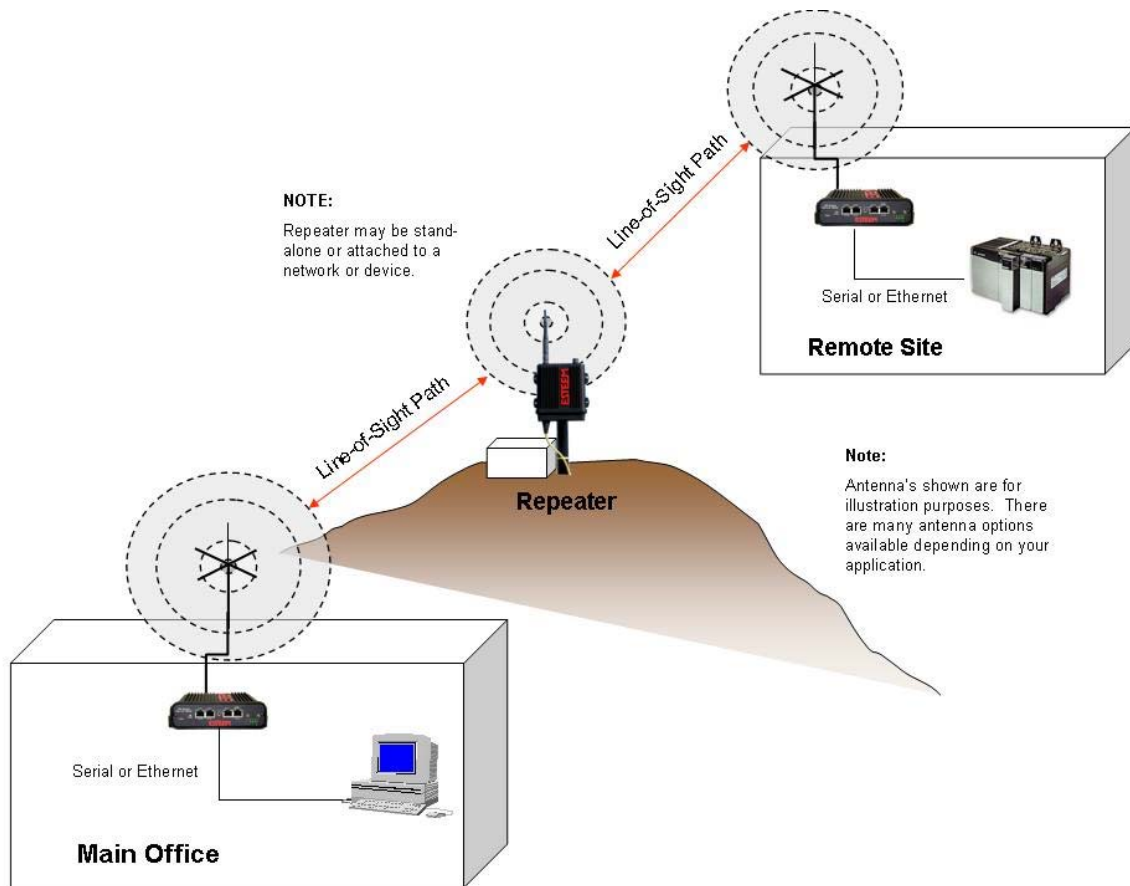


Figure 2: Point to Point with Repeater

Transparent Multipoint Application

The ESTeem 195M, 195H and 195C can be configured multipoint transparent operation (Figure 3). Similar to point-to-point applications, the 195M/H/C can support multiple serial data interfaces (RS-232, RS-422, RS-485 or Ethernet) on either end of the wireless link. These wireless links are independent of each other and configurable.

Example Applications

- Point to multipoint serial networks (RS-232, RS-422 or RS-485)
- Point to multipoint wireless Ethernet communication devices

Applications Where Transparent Mode Not Used

- PLC Emulation Networks (see PLC Emulation below)
- Simple network connections (see transparent point to point)

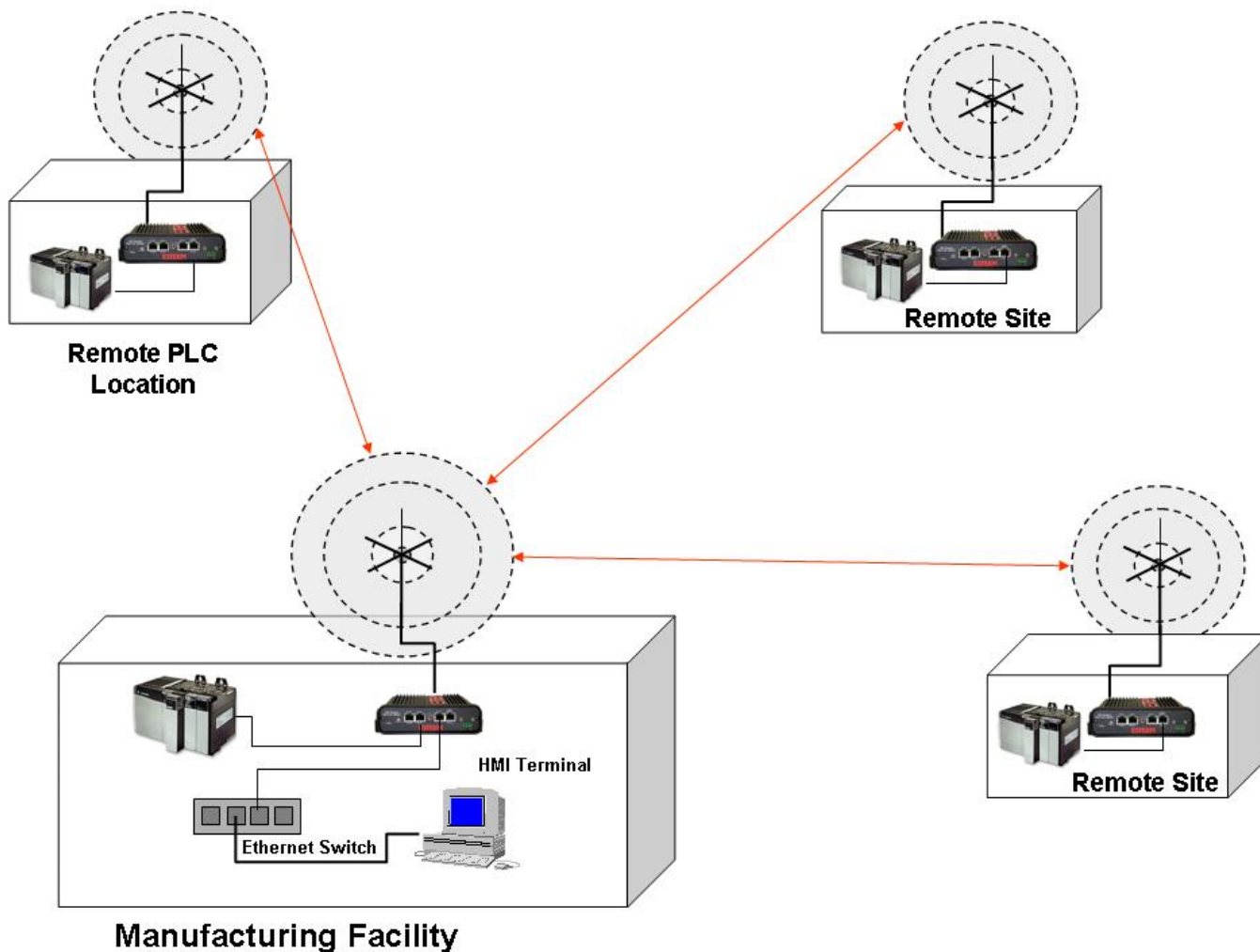


Figure 3: Point to Multipoint Transparent Example

PLC Emulation Applications

The ESTeem 195M, 195H and 195C can support PLC based networks in both point to point and multipoint applications. The PLC emulation driver allows the ESTeem to identify the destination address in the PLC message block and change the ESTeem destination address to match. This PLC emulation allows the ESTeem 195M/H/C to support multiple repeaters in a network (Figure 4). If repeaters are used with PLC emulation, the route and append table will also need configured (see Chapter 4 for complete details).

PLC Protocols Supported

- Rockwell Automation/Allen-Bradley DF1 Full-Duplex
- Rockwell Automation/Allen-Bradley DF1 Half-Duplex
- Rockwell Automation/Allen-Bradley DF1 Radio Modem
- Modbus RTU/ASCII
- Opto-22
- DNP-V3

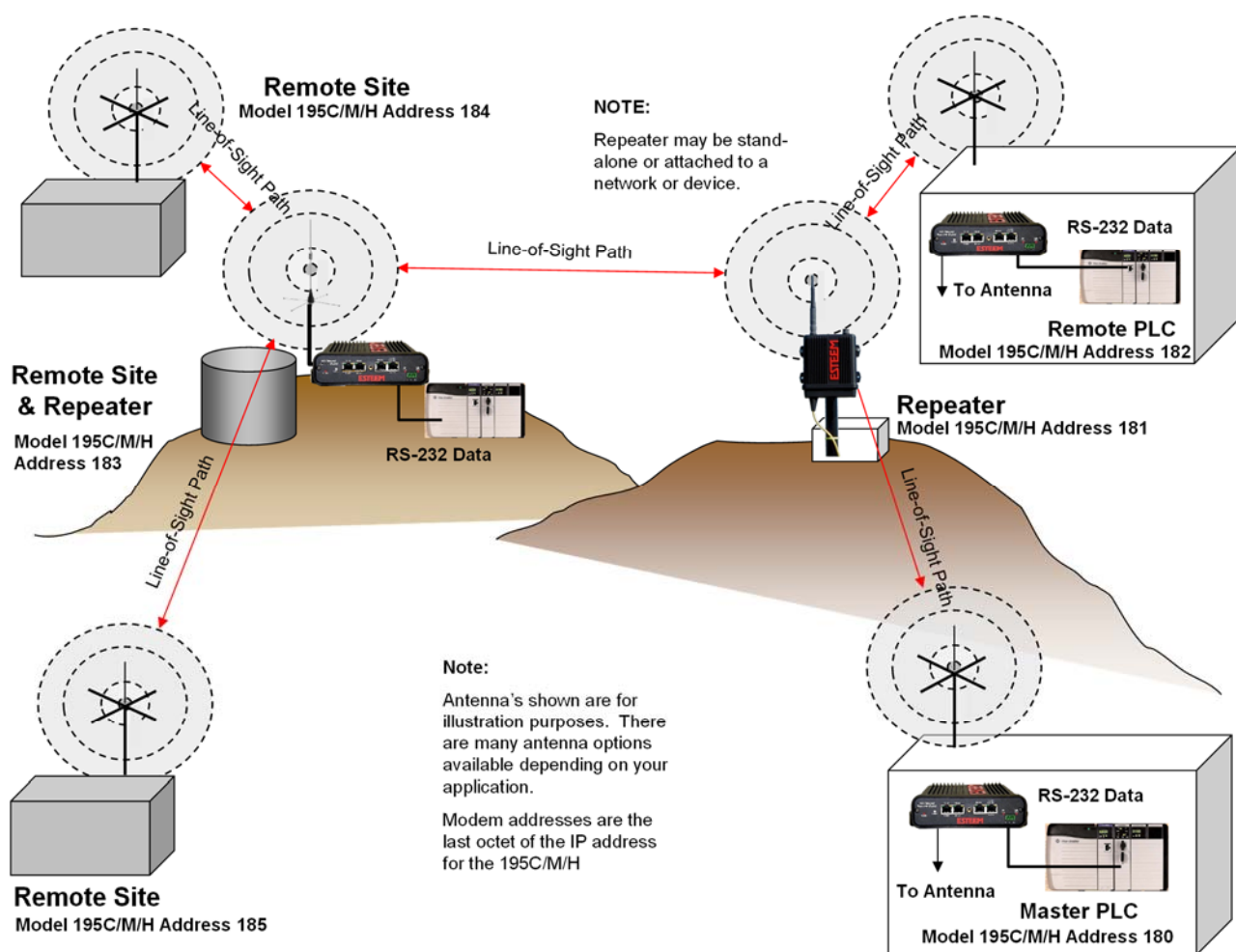


Figure 4: Multipoint PLC Emulation Example

Programming Examples

Once the mode of operation for the ESTeem has been determined, you are now ready to program the Model 195C, 195M or 195H for use. ESTeem has created a simplified programming utility call the 195 Narrow Band Configuration Tool. This configuration utility is a component of the Discovery Suite and will be used in all the following programming examples.

Technical Tip: The 195 Narrowband Configuration Tool communicates with the 195M/H/C through the Ethernet interface. If Ethernet or RS-422 (Shared ports with the Ethernet programming port) are the data interface for the wireless link, configure the 195M/H/C as shown below first. Once configured and reset change to the correct data cable.

Finding ESTeem 195M/H/C with Discovery

Each of the example applications will use the 195 Narrowband Configuration Utility to program the ESTeem 195M/H/C. The modem can also be programmed by changing individual software commands any serial interface (RS-232, RS-422 or RS-485) or Telnet to the Ethernet port. Please refer to Appendix-A (Software Commands) for a complete list of software commands and instructions on configuration.

Technical Tip: If your computer is configured for DHCP and not attached to the network, you will need to assign a static IP address to program the 195M/H/C.

1. Verify the basic hardware configuration from Chapter 2 and open the 195 Narrowband Configuration Utility (Figure 5). Press the *Discover* button to continue.

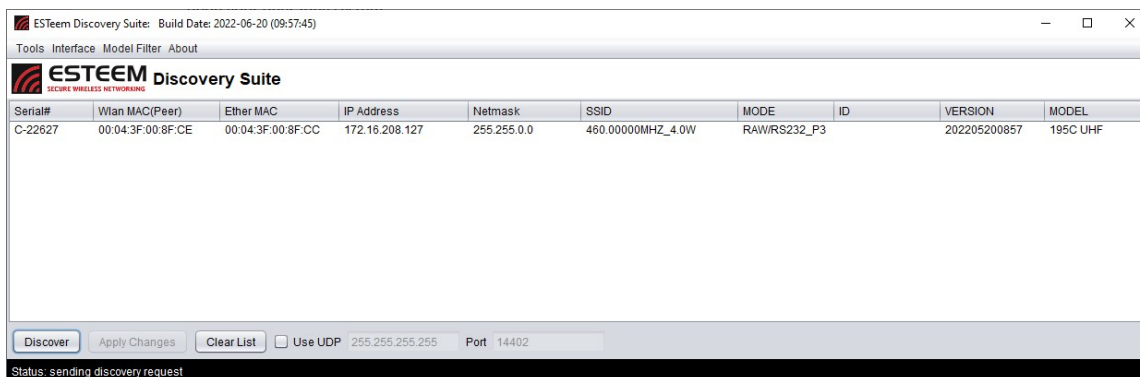


Figure 5: ESTeem Discovery Utility

2. The ESTeem 195M/H/C will be displayed (Figure 5). If the ESTeem 195M/H/C is not on the same IP subnet as the computer, double click on the IP address and Netmask to make the necessary changes. Press the *Apply Changes* button when complete.
3. If changes were made to the IP address you will need to press the *Discover* button again to show the changes. Right-mouse click on the ESTeem 195M/H/C and select *195NB Setup Tool* button to begin programming.

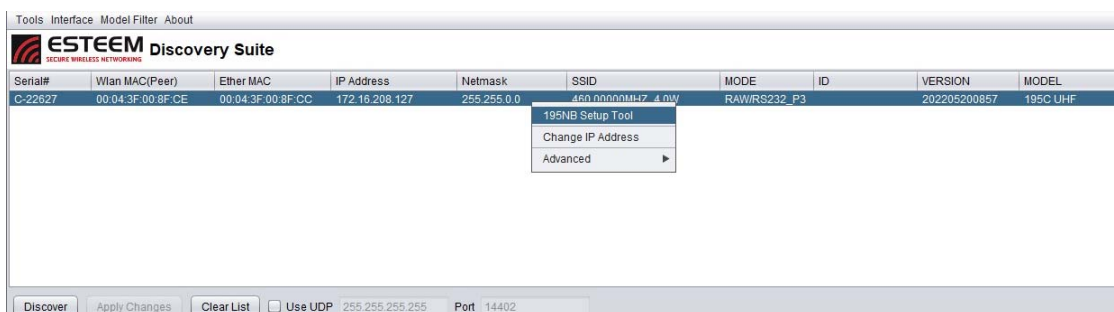


Figure 6: Opening Radio Configuration Software

Point to Point Transparent Example 1 (Figure 1)

(2) ESTeem Model 195C

Transparent RS-232 Wireless Link

RS-232 Data Rate (19,200 bps, No Parity, 8 data bits, 1 stop bit)

465.500 MHz Operating Frequency

Main Office Address – 172.16.10.180

Remote Site Address – 172.16.10.181

Technical Tip: The unit address of the ESTeem 195C, 195M or 195H is the last octet of the IP address. This single address is used when configuring the destination and routing. Example – Main Address IP = 172.16.10.180. Unit address = 180.

The 195 Series Narrow Band Configuration Tool provides a graphical interface to the software commands for the ESTeem 195M/H/C. The Configuration tab is the default when the *195NB Setup Tool* (Figure 6) button is pressed in the Discovery Program. All the basic configuration parameters can be entered in this window (Figure 7). Most basic information such as the current frequency of operation, address and port configuration will be read from the 195M/H/C and displayed.

Main Office Configuration

1. The current address will be set to the last octet of the IP address. The Main Office address will be set to 180.

2. While on the first page of the Wizard configuration utility set the following options then press Next.

- Set the data interface to the RS-232 DATA port (Port 3).
- Set the operating frequency to 456.500 MHz.
- Set the remote address to the last octet in Remote Site address (181).

3. Configure the Serial interface as needed. Press Next.

4. Set the operating mode to Transparent. Press Next.

Once all the above software commands are adjusted to their correct parameters, press the *Write Config* button to send the changes to the 195C, 195M or 195H. The modem will reset and be ready for operation on the selected serial port.

Remote Site Configuration

1. While on the first page of the Wizard configuration utility set the following options then press Next.

- Set the data interface to the RS-232 DATA port (Port 3).
- Set site address to 181.
- Set the operating frequency to 456.500 MHz.
- Set the destination address to the last octet in Main Office address (180).

2. Configure the Serial interface as needed and press Next, then set the operating mode to Transparent and press Next.

Once all the above software commands are adjusted to their correct parameters, press the *Write Config* button to send the changes to the 195C, 195M or 195H. The modem will reset and be ready for operation on the selected serial port.

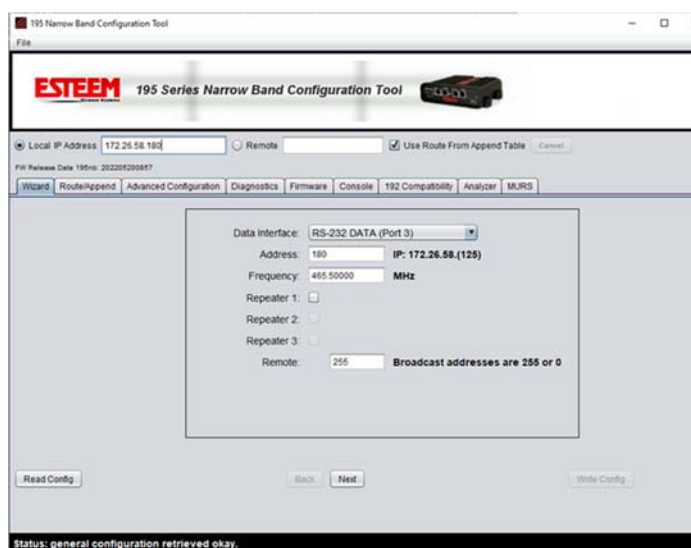


Figure 7: Model 195M/H/C Main Site Configuration

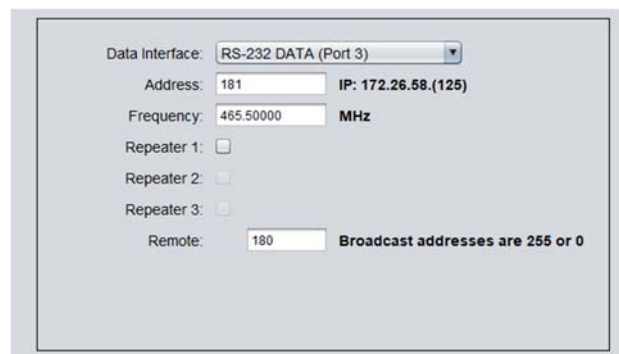


Figure 8: Point to Point Remote Site Configuration

Point to Point Transparent Example 2 (Figure 2)

(3) ESTeem Model 195C
 Transparent RS-232 Wireless Link
 RS-232 Data Rate (19,200 bps, No Parity, 8 data bits, 1 stop bit)
 465.500 MHz Operating Frequency
 Main Office Address – 172.16.10.180
 Remote Site Address – 172.16.10.181
 Repeater Site Address – 172.16.10.200

Technical Tip: The unit address of the ESTeem 195C, 195M or 195H is the last octet of the IP address. This single address is used when configuring the destination and routing. Example – Main Address IP = 172.16.10.180. Unit address = 180.

The addition of a repeater to a point to point link is as simple as including the repeater address in the destination (Figure 9). The following are configuration page examples for each site in the network.

Main Office Configuration

1. While on the first page of the Wizard configuration utility set the following options then press Next.

- Set the data interface to the RS-232 DATA port (Port 3).
- Set site address to 180.
- Set the operating frequency to 456.500 MHz.
- Set the destination to the Remote Site address including the repeater (200,181). The 195M/H/C RF link will follow the exact path as written in this field. For example, the data will first be sent to address 200 and then repeated to address (181).

5. Configure the Serial interface as needed and press Next, then set the operating mode to Transparent and press Next.




Figure 9: Point to Point with Repeater Main Site Configuration

Once all the above software commands are adjusted to their correct parameters, press the *Write Config* button to send the changes to the 195C, 195M or 195H. The modem will reset and be ready for operation on the selected serial port.

Complete the configuration for the remote site and repeater as shown in Figures 10 and 11.

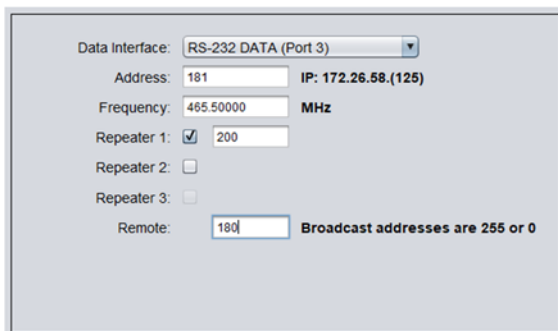


Figure 10: Remote Site Configuration

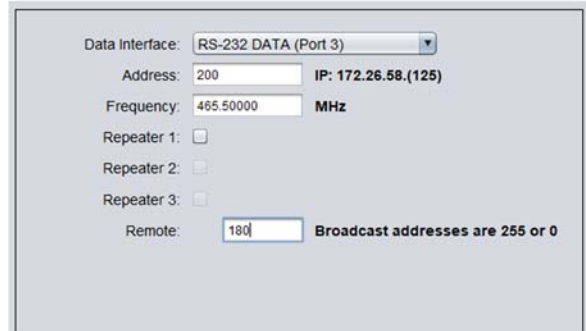


Figure 11: Repeater Site Configuration

Multipoint Transparent Example 1 (Figure 3)

(4) ESTeem Model 195C
 Transparent RS-485 Wireless Link
 (19,200 bps, No Parity, 8 data bits, 1 stop bit)
 465.500 MHz Operating Frequency
 Manufacturing Facility Address – 172.16.10.180
 Remote Site Addresses – 172.16.10.183-172.16.10.186

Technical Tip: The unit address of the ESTeem 195C, 195M or 195H is the last octet of the IP address. This single address is used when configuring the destination and routing. Example – Main Address IP = 172.16.10.180. Unit address = 180.

The following are examples of the configuration pages need for point to multipoint operation. The only difference from a point to point application is that a special global Destination Address (Address = 255) is used. Setting the address to 255 on the Destination will allow all remote locations to receive the data simultaneously and pass through the configured serial data interface.

Technical Tip: To send to multiple remote locations at once use a global Setconnect address of 255.

Manufacturing Facility Configuration

1. While on the first page of the Wizard configuration utility set the following options then press Next.

- Set the data interface to the RS-485 DATA port (Port 1).
- Set site address to 180.
- Set the operating frequency to 456.500 MHz.
- Set the destination to the Broadcast address 255.

5. Configure the Serial interface as needed and press Next, then set the operating mode to Transparent and press Next.

Once all the above software commands are adjusted to their correct parameters, press the *Write Config* button to send the changes to the 195C, 195M or 195H. The modem will reset and be ready for operation on the selected serial port.

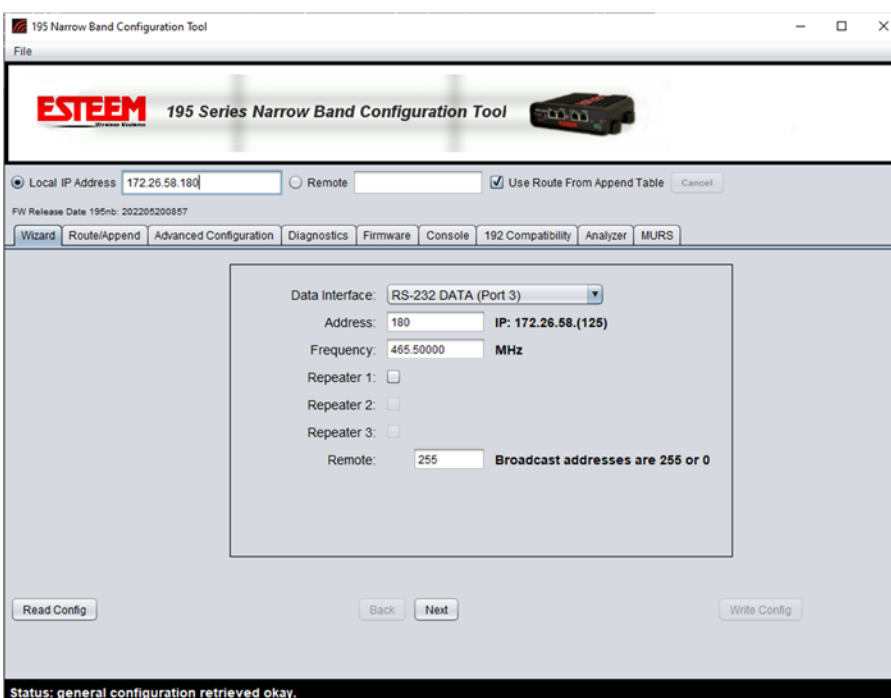


Figure 12: Multipoint Example Manufacturing Facility Configuration

The configuration for the remote sites in the network will be very similar with only the address being different for each wireless modem. Complete the configuration for the remote sites as shown in Figure 13.

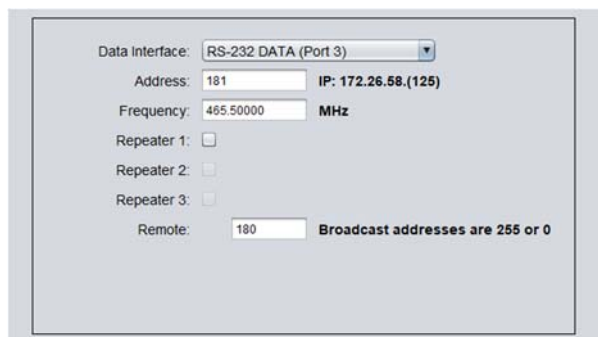


Figure 13: Remote Site Configuration

PLC Emulation Example 1 (Figure 4)

(6) ESTeem Model 195C

Allen Bradley DF1 Half-Duplex (BCC) Emulation

465.500 MHz

Main Office Address – 172.16.10.180

Repeater Address – 172.16.10.181

Remote Site Addresses – 172.16.10.182-172.16.10.185

Technical Tip: The address of the ESTeem 195M/H/C **must match** the connected PLC when operating with a **serial interface** in PLC emulation mode.

The following are configuration page examples for PLC emulation mode. The PLC emulation driver allows the ESTeem to identify the destination address in the PLC message block and change the ESTeem destination address to match. This PLC emulation allows the ESTeem 195M/H/C to support multiple repeaters in a network (Figure 4). **If repeaters are used with PLC emulation, the route and append table will also need configured.**

Technical Tip: The unit address of the ESTeem 195C, 195M or 195H is the last octet of the IP address. This single address is used when configuring the destination and routing. Example – Main Address IP = 172.16.10.180. Unit address = 180.

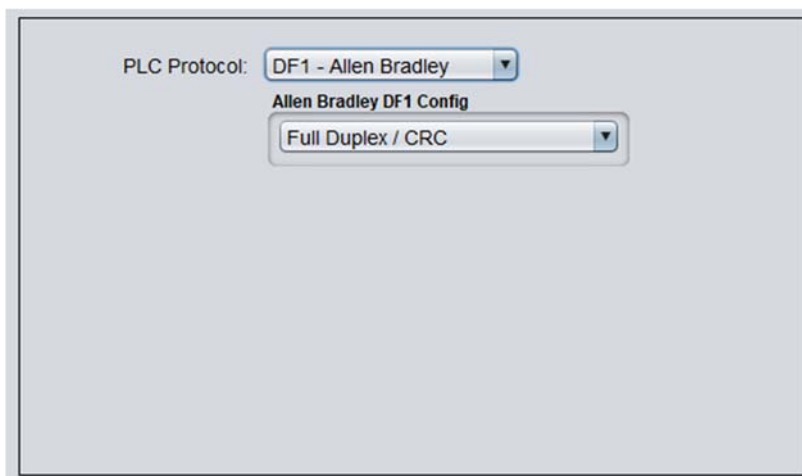


Figure 14: Master PLC Emulation Configuration

Master Configuration

1. While on the first page of the Wizard configuration utility set the following options then press Next.

- Set the data interface to the RS-232 DATA port (Port 3).
- Set site address to 180.
- Set the operating frequency to 456.500 MHz.
- Set the destination to any remote site address (address 181 used for example).

5. Configure the Serial interface as needed and press Next, then set the operating mode to Allen Bradley DF1, Half Duplex with BCC error checking and press Next.

6. Once all the above software commands are adjusted to their correct parameters, press the *Write Config* button to send the changes to the 195C, 195M or 195H.

To set up the Master Site to use repeaters as shown in Figure 4, move to the Route/Append tab in the configuration utility. We'll use the Wizard configuration tool and Figure 15 will be displayed.

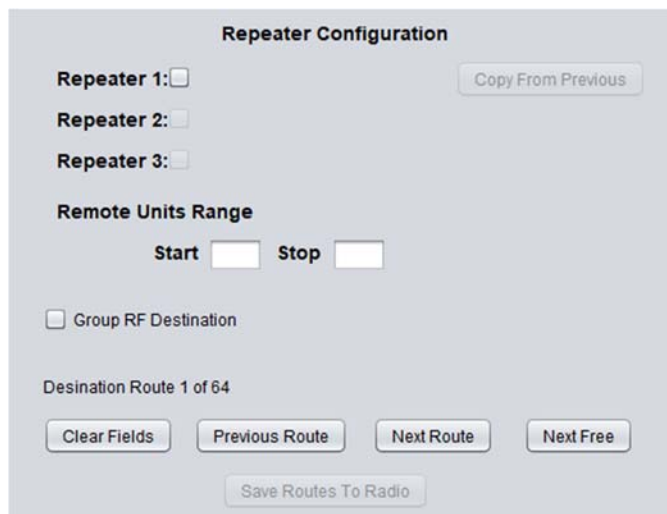


Figure 15: Repeater Routing Configuration

Master Site Repeater Configuration

Only the master site in a PLC Emulation network will have the repeater routing information. PLC Emulation Example 1 (Figure 4) uses two ESTeem 195M/H/C radio modems as repeaters. There is a stand-alone repeater at IP address 172.16.10.181 (Address 181). Using the Wizard, check the box next to repeater 1 to enable the repeater for this and fill it in as mentioned above. (Figure 16). The append entry is created for a group of address from the Start ID to the Stop ID. Refer to Figure 4 and note address 182 and 183 (repeater and also a remote site) will use the repeater (address 181). Enter a start address of 182 and an end address of 183. Then click Next Route and do the same for the next entry with and a second repeater site that is also a remote location at IP address 172.16.10.183 (Address 183) and a Start and Stop ID of 184 and 185 respectively.

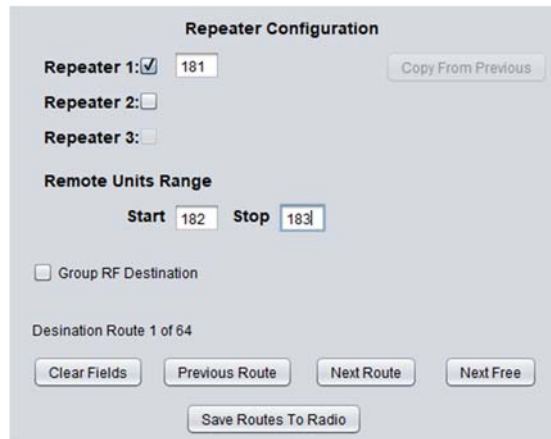


Figure 16: Routes and Append Configuration

Once all repeater entries have been completed, press the *Save Routes to Radio* button (Figure 15) to save the values in the Master Site. For further detail on repeaters and their configuration, please refer to Chapter 4 of this User's Manual.

Remote Site Configuration (Remote Site 184 for Example)

The remote site configuration will be similar on all remote locations. Only the address and destination address will change.

1. While on the first page of the Wizard configuration utility set the following options then press Next.

- Set the data interface to the RS-232 DATA port (Port 3).
- Set site address to 184.
- Set the operating frequency to 456.500 MHz.
- Set the destination address as the path to the Master site (183,181,180). See Figure 17.

5. Configure the Serial interface as needed and press Next, then set the operating mode to Allen Bradley DF1, Half Duplex with BCC error checking and press Next.

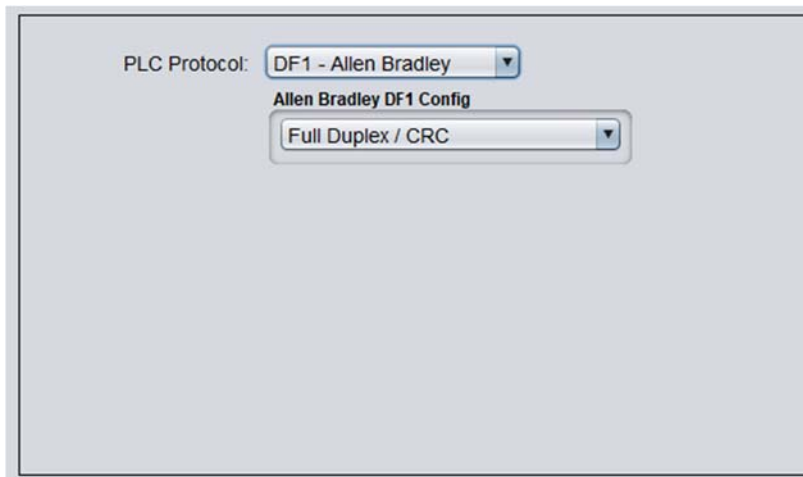


Figure 17: Remote Site PLC Emulation Configuration

Once all the above software commands are adjusted to their correct parameters, press the *Write Config* button to send the changes to the 195C, 195M or 195H. The modem will reset and be ready for operation on the selected serial port.

Any ESTeem Model 195M, 195H or 195C in the wireless network can be used as a repeater to reach a remote location. Manually entering repeater routes in a terminal for testing a connection (connect command) or remote programming (program command) is as simple as adding the routing in the address with the repeaters identified by commas. For example, using Figure 1, if your computer is connected to the ESTeem 195M/H/C at the Master Station and you want to connect to address 21, your command would be “connect 3,21”. Also if you wished to connect to address 30 from the Master Station your command would be “connect 3,20,40,30”.

Configuring Route and Append Tables

When using the PLC emulation modes, the repeater configuration will be different for the Master and Remote locations in a network. You will need to configure the repeater routing table for the Master ESTeem only. The Master ESTeem is the ESTeem connected to the PLC that is initiating communication to remote PLC's through other remote stations. Do not program the repeater configuration in the repeating ESTeems or the remote ESTeems.

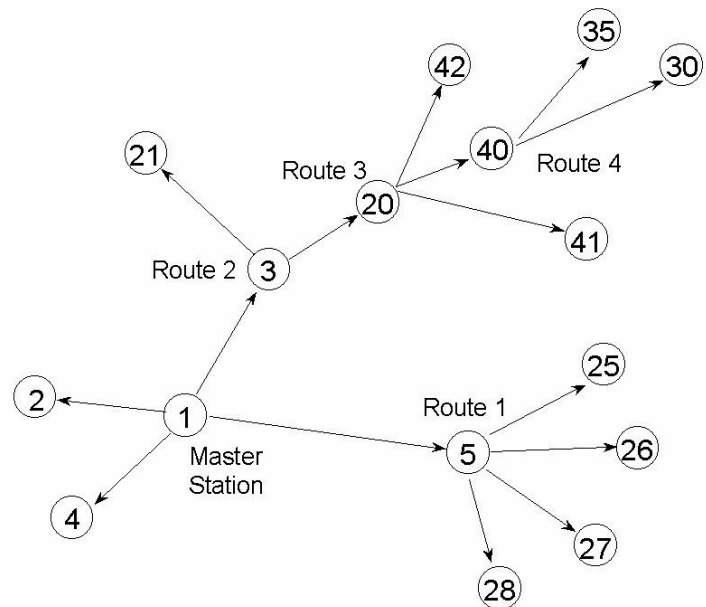


Figure 1: Repeater Example

Figure 1 shows a complex, 16 node site with four (4) repeater routes. This example will illustrate the terms used in the utility and how they correspond to the stations in your site.

Look in Figure 1 and note that four of the ESTeems will relay the radio signal for other ESTeems (addresses 3, 5, 20 and 40). These are the repeater routes. A total of four repeater routes will need to be completed for this site.

Technical Tip: The maximum number of memory locations for any ESTeem is 64. When possible, try and group as many addresses together as you can to save available memory locations.

Route 1: To complete the first repeater route entry, refer to Figure 1 and find repeater address 5 (Route 1). The ESTeem/PLC addresses that use this route are addresses 25-28. In the 195M/H/C Configuration Utility select the Route/Append tab and press the *List View* button (Figure 2

will be displayed). In Route Entry 01 enter the repeater address (Address 5). Scroll down the page and find Append Entry 01 and enter the Repeater Route and address group and will use this repeater site (Figure 3).

Technical Tip: A repeater route consists of any ESTeem in the network that repeats information to another modem.



Figure 2: Route and Append Edit

Route Entry 01 Repeater 1 Repeater 2 Repeater 3

Append Entry 01 Route Start ID End ID Use_RF_Dest ☐ RF Dest

Figure 3: Route 1 Configuration

Note: ESTeem addresses are input to the Append Entry section in blocks of two numbers. The two numbers represent a range of addresses for a given route. The numbers could be input to cover a range of addresses (such as 25,28 contain all addresses from 25 through 28) or input to cover a single address (such as 25,25 would only attach address 25 to this route).

Route 2: Refer to Figure 1 and find Route 2. This route has a repeater address of 3 and addresses 20 through 21 use this route. **Note:** Although address 20 is a repeater for another route, it requires an ESTeem address and needs to be counted. Type 3 in the first repeater block, 20 in the first address field and 21 in the second (Figure 4).

Route Entry 01	Repeater 1	5	Repeater 2	0	Repeater 3	0
Route Entry 02	Repeater 1	3	Repeater 2	0	Repeater 3	0

Append Entry 01	Route	1	Start ID	25	End ID	28	Use_RF_Dest	<input type="checkbox"/>	RF Dest	0
Append Entry 02	Route	2	Start ID	20	End ID	21	Use_RF_Dest	<input type="checkbox"/>	RF Dest	0

Figure 4: Route 2 Configuration

Route 3: Refer to Figure 1, Route 3 and notice there are two repeaters in this route (addresses 3 and 20). A repeater route always follows the address path from the master station. The first repeater address from the master in this route is address 3. Type 3 in the first repeater block. The second repeater from the master is address 20. Type 20 in the second repeater block. Addresses 40 through 42 use this route. Type 40 in the first address field, 42 in the second (Figure 5).

Route Entry 01	Repeater 1	5	Repeater 2	0	Repeater 3	0
Route Entry 02	Repeater 1	3	Repeater 2	0	Repeater 3	0
Route Entry 03	Repeater 1	3	Repeater 2	20	Repeater 3	0

Append Entry 01	Route	1	Start ID	25	End ID	28	Use_RF_Dest	<input type="checkbox"/>	RF Dest	0
Append Entry 02	Route	2	Start ID	20	End ID	21	Use_RF_Dest	<input type="checkbox"/>	RF Dest	0
Append Entry 03	Route	3	Start ID	40	End ID	42	Use_RF_Dest	<input type="checkbox"/>	RF Dest	0

Figure 5: Route 3 Configuration

Route 4: This fourth route uses a total of three repeaters. Follow the address route from the master and notice that the first repeater is address 3. Type 3 in the first repeater block. The second address from the master in this route is address 20. Type 20 in the second repeater block. The third repeater address from the master is address 40. Type 40 in the third repeater block. (Figure 6). Notice that the two addresses that use this repeater route are not sequential, by putting 30 in the first block and 35 in the second would allocate addresses 31-34 to this route. In this example we will input each address separately. On the first line type 30 in both blocks and on the second line use the same repeater route number and type 35 in both blocks (Figure 6).

Once all repeater routes are addressed, press the *Write Tables* button to save to the connected ESTeem 195C, 195M or 195H.

Route Entry 01	Repeater 1	5	Repeater 2	0	Repeater 3	0
Route Entry 02	Repeater 1	3	Repeater 2	0	Repeater 3	0
Route Entry 03	Repeater 1	3	Repeater 2	20	Repeater 3	0
Route Entry 04	Repeater 1	3	Repeater 2	20	Repeater 3	40

Append Entry 01	Route	1	Start ID	25	End ID	28	Use_RF_Dest	<input type="checkbox"/>	RF Dest	0
Append Entry 02	Route	2	Start ID	20	End ID	21	Use_RF_Dest	<input type="checkbox"/>	RF Dest	0
Append Entry 03	Route	3	Start ID	40	End ID	42	Use_RF_Dest	<input type="checkbox"/>	RF Dest	0
Append Entry 04	Route	4	Start ID	30	End ID	30	Use_RF_Dest	<input type="checkbox"/>	RF Dest	0
Append Entry 05	Route	4	Start ID	35	End ID	35	Use_RF_Dest	<input type="checkbox"/>	RF Dest	0

Figure 6: Route 4 Configuration

Reading Route and Append Tables

To find the saved route and append tables in an ESTeem 195M/H/C click on the Route/Append tab of the Model 195 Narrowband Configuration Utility and press the *Read Tables* button. Figure 7 displays the saved Routes and Appends for the wireless network shown in Figure 1.

Clearing Route and Append Tables

To clear route and append tables in an ESTeem 195M/H/C click on the Route/Append tab of the Model 195 Narrowband Configuration Utility and press the *Zero Tables* button.

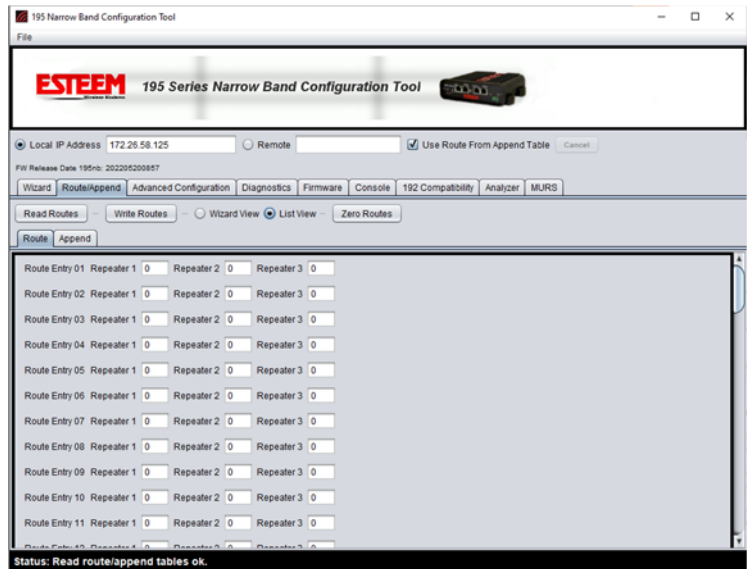


Figure 7: Saved Repeater and Route Data

The ESTeem Model 195M, 195H and 195C have a Full and Half-Duplex Auto-negotiation interface supporting both 10 Mbps and 100 Mbps (10/100BaseT). The port is compatible with TIA/EIA-568B cable configuration (Figure 1). The Ethernet port is used for both programming the Model 195M/H/C and data transfer.

The Ethernet port on the 195M/H/C is used as the primary interface when programming with the 195 Narrowband Configuration Utility. For complete information on the use of the utility program, please refer to Chapter 6 (Utilities and Features) in the user's manual.

Technical Tip: The ESTeem 195M/H/C have a low (12.5-50Kbps) RF data rate which should be considered when being used to bridge large Ethernet networks.



RJ45 Pin No.	Wire Color	Wire Diagram	10Base-T Signal 100Base-TX Signal
1	White/Orange		Transmit +
2	Orange		Transmit -
3	White/Green		Receive +
4	Blue		Unused
5	White/Blue		Unused
6	Green		Receive -
7	White/Brown		Unused
8	Brown		Unused

Figure 1: Ethernet Interface

Ethernet Bridge Mode

The mode of operation for transfer of Ethernet data over an ESTeem 195C, 195M or 195H wireless network is the Ethernet Bridge Mode. This mode is primarily used to gather data from remote Ethernet devices such as RTU's or PLC's in supervisory control networks (SCADA). Bridging Ethernet networks with these narrowband wireless modems will not work. To configure the Ethernet bridge mode:

Technical Tip: The ESTeem 195M/H/C do not support Spanning Tree Protocol (STP) on the Ethernet Bridge so all network loops will have to be resolved by network layout.

1. Set the Data Interface in the 195 Series Narrow Band Configuration Tool to Ethernet 10/100 (Figure 2).
2. Verify the IP address for the 195M/H/C and note the Address shown is the last Octet of the IP address.
3. Verify the operating frequency is correct for the licensed network and press Next.
4. Enable encryption if needed then press the *Write Config* button to save the changes and proceed to the Route/Append configuration (below).

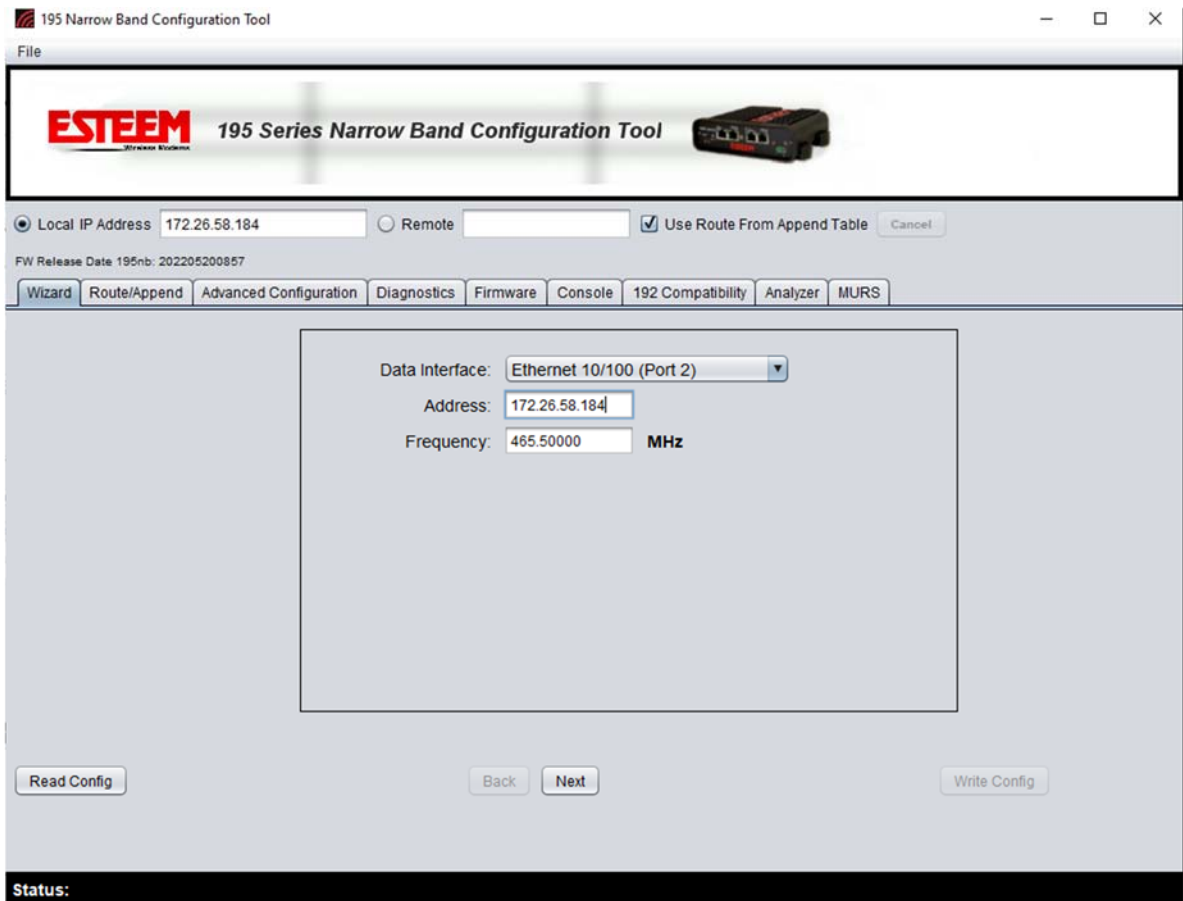


Figure 2: Ethernet Bridge Configuration Page

Ethernet Network Routing Configuration

To control the Ethernet data flow in the wireless network, the Ethernet bridge mode uses the Route and Append tables. Every Ethernet device using the ESTeem 195M/H/C wireless network will have to be identified in the Route/Append table. This detailed configuration will allow the lower throughput Ethernet radio modems to only pass network traffic for the specific Ethernet devices on the network and ignore all broadcast traffic.

Technical Tip: The ESTeem 195M/H/C only support Class B (255.255.0.0) and Class C (255.255.255.0) IP subnets.

There are two methods for configuring the Route/Append tables. The Wizard View will guide you through the configuration of the Route/Append table by asking simple questions on remote IP addresses. The Wizard View is a more simplified configuration method recommended for simple IP Subnet networks. The List View will allow you to enter the IP address range directly in the route and append table and set the destination radio address (RF Dest) for each remote location. The list view will be best used for more complicated IP networks and making specific changes to the route/append table.

Figure 3 below shows an example wireless Ethernet network layout:

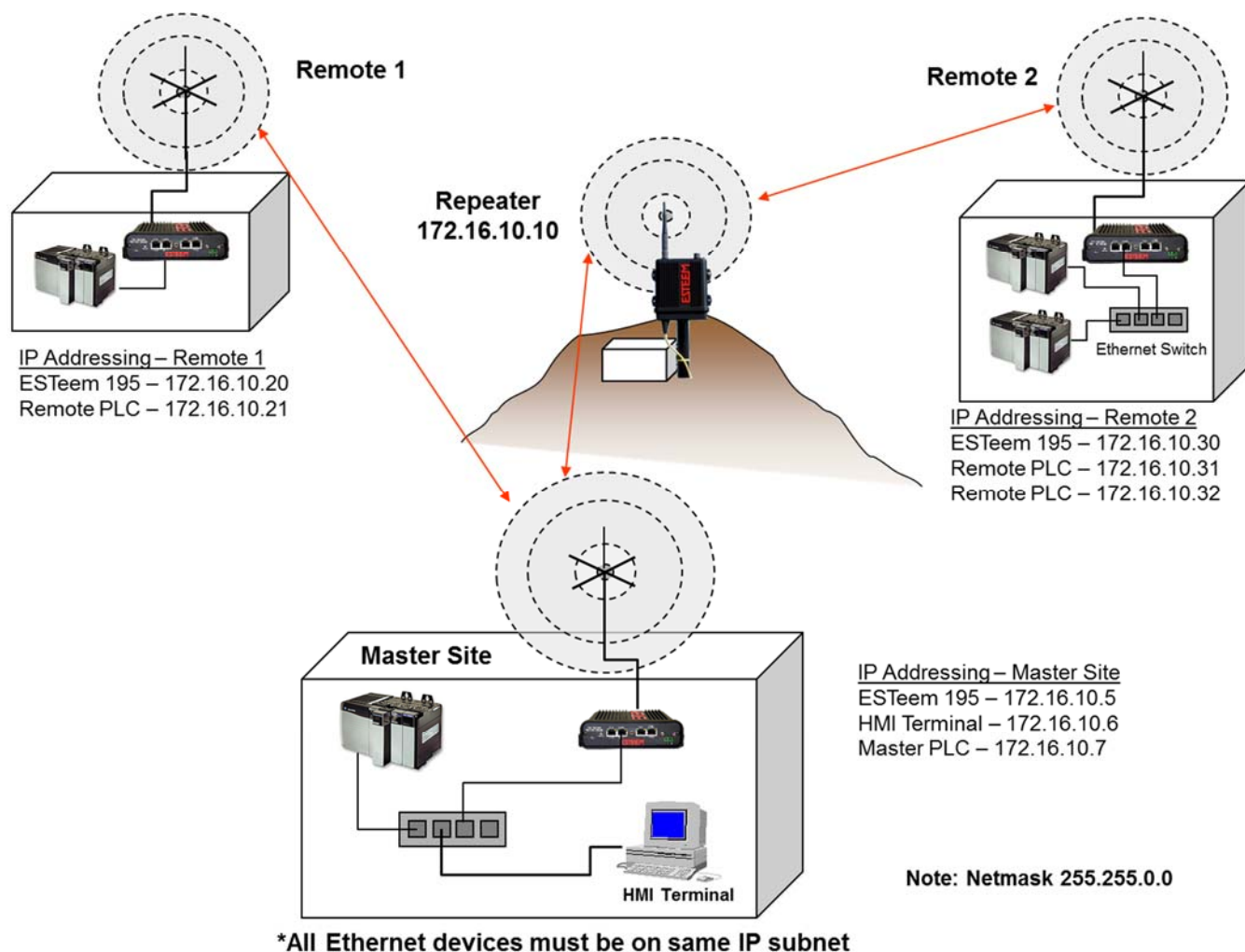


Figure 3: Wizard View Ethernet Example

Wizard View

The Wizard View will ask questions about the IP addresses being used in the wireless network. If an IP address is not identified in the Route/Append table, the ESTeem 195M/H/C will **NOT** process that address. When selecting the Route/Append tab, press the Wizard View radial button and Figure 4 will be displayed. This simplified entry method asks for the remote ESTeem address (Destination) and the remote IP address range. If repeaters are used, check the box next to the repeater and enter the IP address of the ESTeem 195M/H/C.

Programming the Master Site and using Figure 3 - Remote 1, enter the Destination IP address as 172.16.10.20 (remote ESTeem address) and the IP address range will be a single entry so enter 172.16.10.21 through 172.16.10.21 (Figure 5). Press the Next Route button to continue.

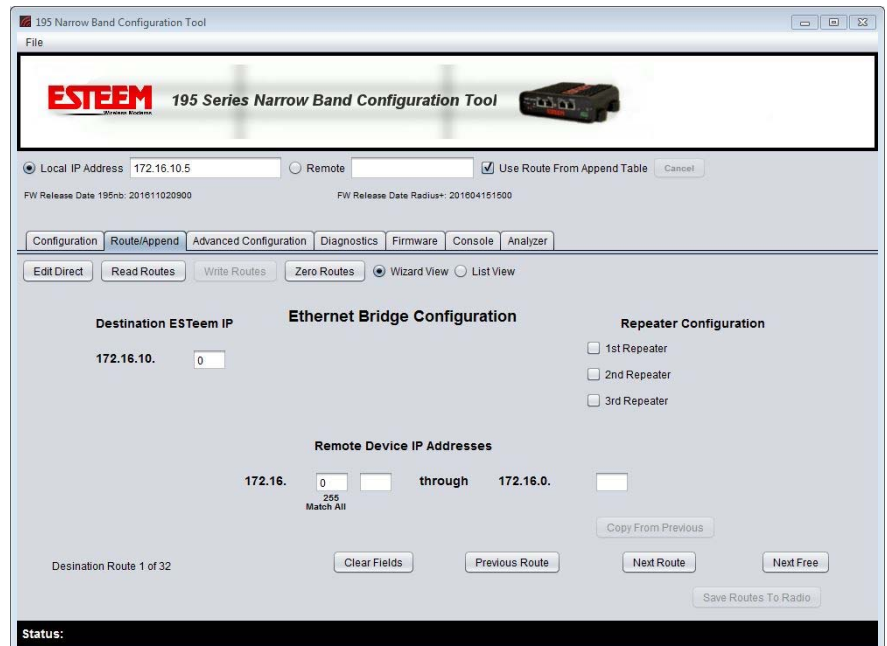


Figure 4: Route/Append Wizard View

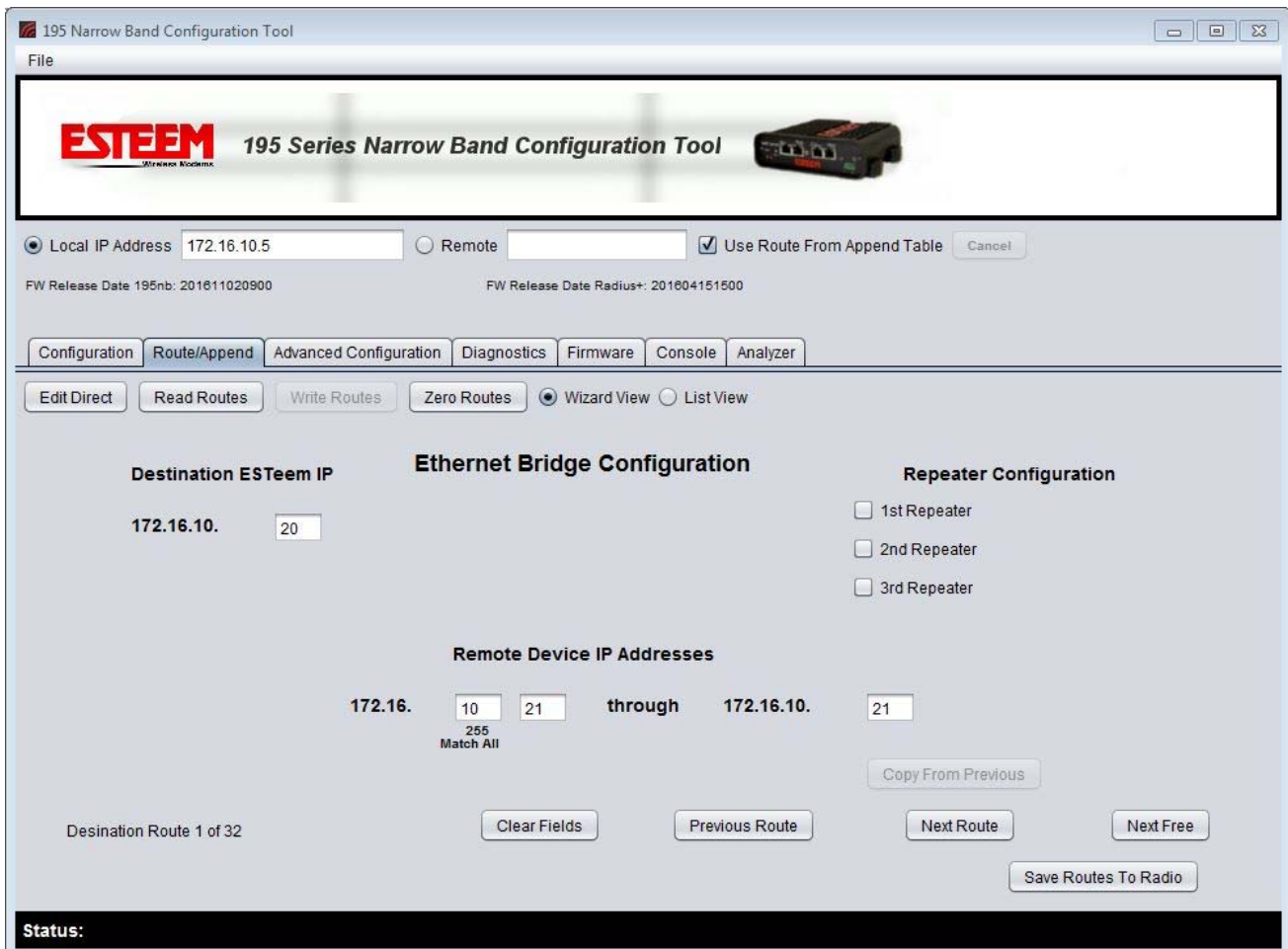
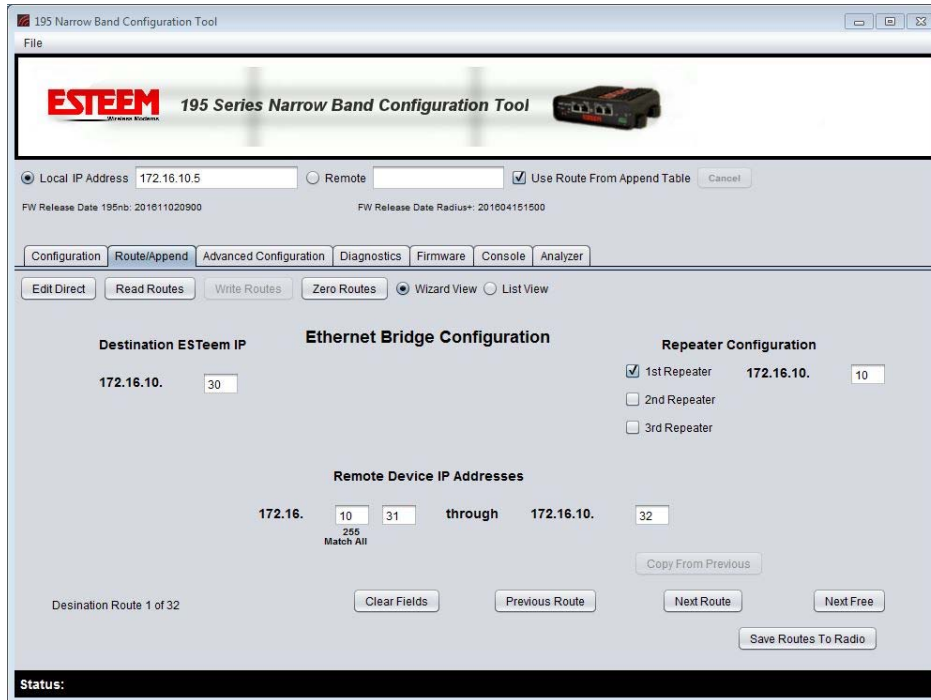


Figure 5: Example Master Site Entry for Remote 1

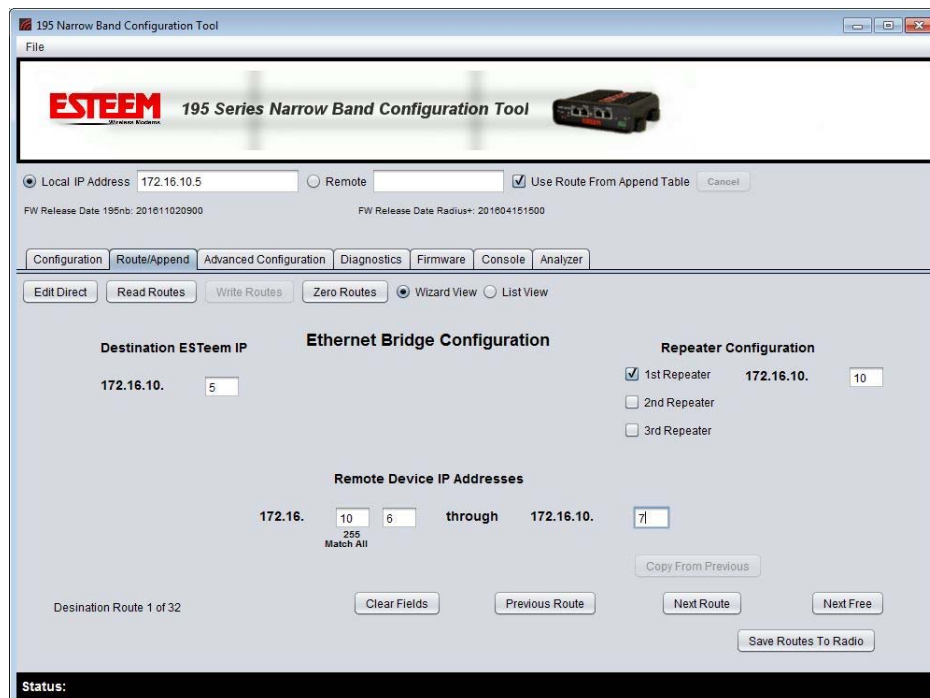
Using the example in Figure 3 find Remote 2. Enter 172.16.10.30 as the destination and the IP range will be from 172.16.10.31 through 172.16.10.32. Press the button next to the 1st Repeater and enter the address of the repeater ESTeem 172.16.10.10 (Figure 6). Once all entries are made, press the “Save Routes to Radio” button to complete the Route/Append programming of the Master Site.



The screenshot shows the '195 Narrow Band Configuration Tool' interface. The 'Route/Append' tab is selected. The 'Destination ESTeem IP' is set to 172.16.10.30. The 'Repeater Configuration' section shows the '1st Repeater' checked with an IP of 172.16.10.10. The 'Remote Device IP Addresses' section shows a range from 172.16.10.31 through 172.16.10.32. The 'Save Routes To Radio' button is visible at the bottom right.

Figure 6: Example Master Site Entry for Remote 2

The remote locations will also require programming to link back to the Master Site. The entry is made the same way as above but entering the Master Site IP address. Figure 7 shows an example of the entry from Remote 2.



The screenshot shows the '195 Narrow Band Configuration Tool' interface. The 'Route/Append' tab is selected. The 'Destination ESTeem IP' is set to 172.16.10.5. The 'Repeater Configuration' section shows the '1st Repeater' checked with an IP of 172.16.10.10. The 'Remote Device IP Addresses' section shows a range from 172.16.10.10 through 172.16.10.71. The 'Save Routes To Radio' button is visible at the bottom right.

Figure 7: Example Remote 2 Entry to Master Site

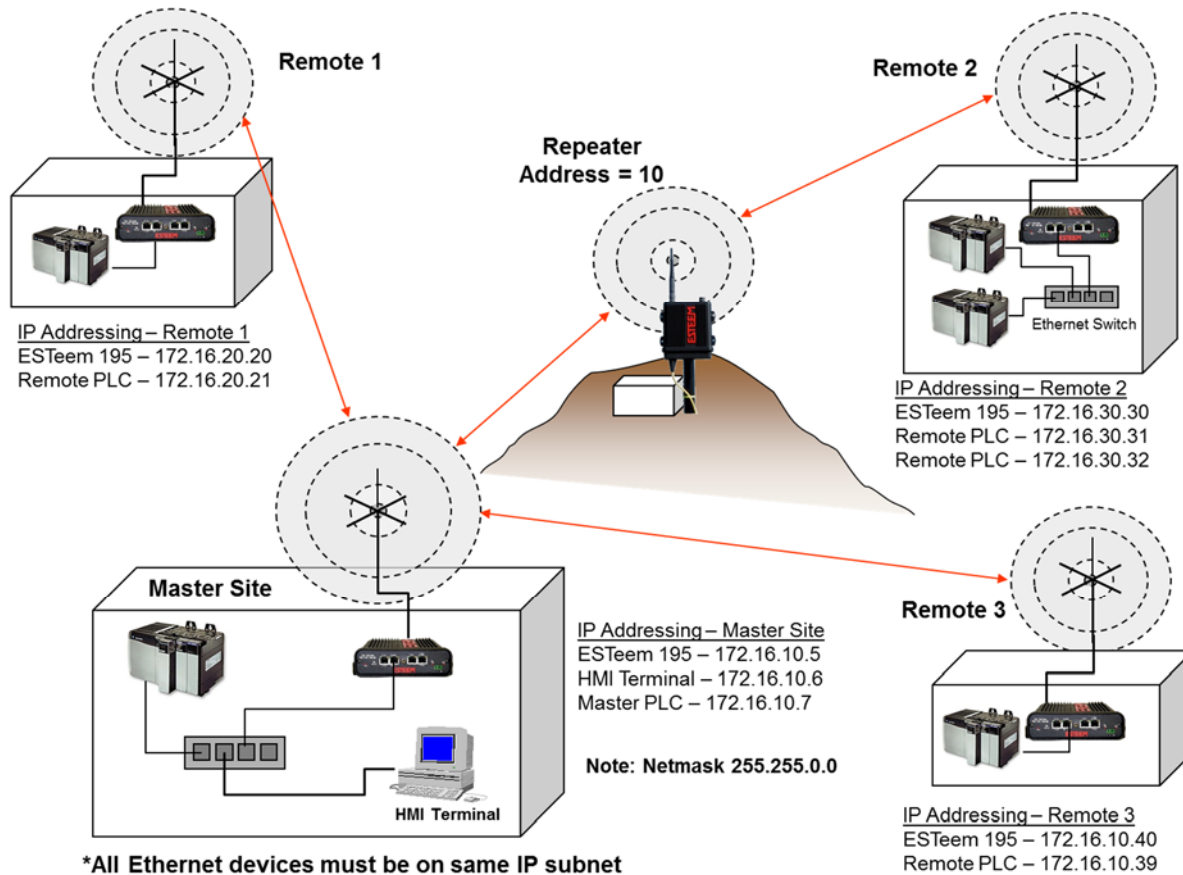


Figure 8: List View Ethernet Example

Route/Append List View

The configuration of the Route and Append list for an Ethernet bridge is very similar to the configuration for repeaters (Chapter 4). The main difference is that the StartID is the first IP address in the IP address group and the EndID is highest (or lowest) IP address device serviced by that remote radio. For example, looking at Remote 2 in Figure 3, the StartID would be 30 (ESTeem address) and the EndID would be 32 (highest IP covered). This setting would cover all address from 30-32 with the RF Dest being the radio address of 30.

Unlike a repeater configuration for serial PLC emulation modes, the return path from the remote to the master **must also** be configured in the route and append tables. If a repeater route is not used to communicate to a remote site, set the Route to 0.

Using Figure 8 for an example, the configuration of the Master Site's route and append table would look like Figure 9. Note that all IP addresses in the network are identified in the append table of the Master Site. If you are using a Class B IP address (Netmask 255.255.0.0) you need to identify the third octet (Oct3) to remote locations in the append table. Note in Append Entry 3, the third octet in the Master and Remote 3 are the same so Oct3 can be left at default entry of 255.

* Route Entry 01	Repeater 1	10	Repeater 2	0	Repeater 3	0				
* Append Entry 01	Route	0	Start ID	21	End ID	21	3rd_Oct	20	RF Dest	20
* Append Entry 02	Route	1	Start ID	31	End ID	32	3rd_Oct	30	RF Dest	30
* Append Entry 03	Route	0	Start ID	39	End ID	39	3rd_Oct	255	RF Dest	40

Figure 9: Master Site Configuration

* Route Entry 01	Repeater 1	10	Repeater 2	0	Repeater 3	0				
* Append Entry 01	Route	1	Start ID	6	End ID	7	3rd_Oct	10	RF Dest	5

Figure 10: Remote 2 Configuration

* Append Entry 01	Route	0	Start ID	6	End ID	7	3rd_Oct	10	RF Dest	5
-------------------	-------	---	----------	---	--------	---	---------	----	---------	---

Figure 11: Remotes 1 and 3 Configuration

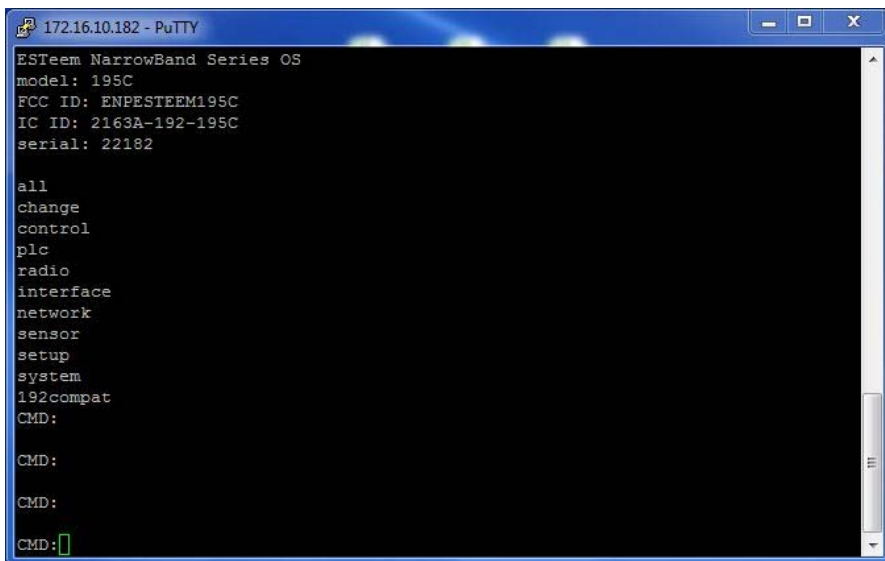
The return paths to the Master site must also be identified in all remote sites. Figure 5 show the return path entries from Remote 2 through the repeater. The route and append configuration for the return path from both Remote 1 and Remote 3 will be the same as shown in Figure 11.

Using the Ethernet Port as a Serial Data Interface

The Ethernet port on the 195M/H/C can be configured as the serial data interface (SDI) to be used by software applications to transport data. The configuration and operation of this mode is outside the scope of this User's Manual. For specific information on this mode of operation and programming examples, please contact customer support at 509-735-9092.

Programming Using the Ethernet Port

You can also access the 195M/H/C via Telnet using the Ethernet port. The Telnet interface will open a console port to the ESTeem 195M/H/C (Figure 12).



```
172.16.10.182 - PuTTY
ESTeem NarrowBand Series OS
model: 195C
FCC ID: ENPESTEEM195C
IC ID: 2163A-192-195C
serial: 22182

all
change
control
plc
radio
interface
network
sensor
setup
system
192compat
CMD:

CMD:

CMD:

CMD:
```

Figure 12: Telnet Console Session

195 Narrowband Configuration Utility

The ESTeem Narrowband Configuration Utility allows easy access to the configuration, monitoring and diagnostics for the ESTeem Model 195M, 195H and 195C. The Narrowband Configuration Utility is a software program contained within the ESTeem Discovery Suite Utility.

ESTeem Discovery Suite Utility

The ESTeem Discovery Utility will allow you to configure the IP address on the Horizon radio to match your network regardless of its current IP subnet. This utility will also allow you to update the software in the Horizon and open the web configuration for that wireless modem.

Technical Tip: If your computer is configured for DHCP and not attached to the network, you will need to assign a static IP address to program the 195M/H/C.

Installation

The Discovery Utility can be downloaded free of charge from the ESTeem web site (<http://www.esteem.com>).

1. The Discovery Utility is a Java™ based application compatible with any computer operating system (Window, Linux, etc). The application requires two (2) additional support files to operate:

Java – Downloadable from <http://www.java.com>. The version required will be based upon your operating system.

Note: The installation and updates from Java may try and install additional web browser toolbars. Uncheck the optional installation if they are not desired.

Npcap – Downloadable from <https://nmap.org/download.html>. Select the latest stable version of the utility for your operating system. The Npcap free addition is supported up to Windows version 10. The version required will be based upon your operating system.

2. Once both the above programs have been installed, save the estDiscoverySuite.exe file to any location on your computer such as the Desktop. Double click the ESTeem.exe program and Figure 1 will be displayed.

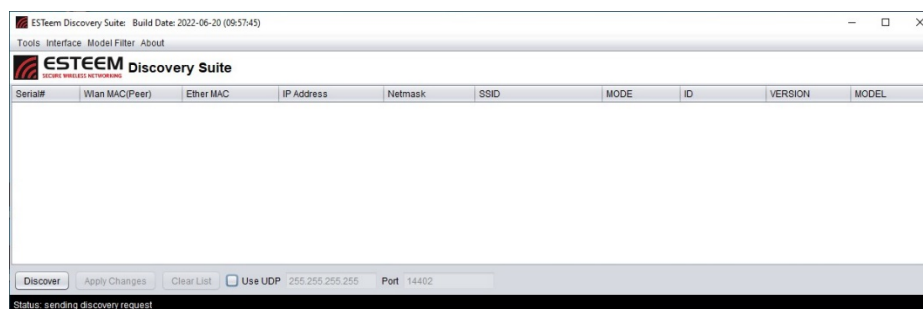


Figure 1: ESTeem Discovery Utility

3. Connect the ESTeem 195M/H/C modem to your computer either directly to the Ethernet card or through a Switch using a CAT-5e Ethernet cable. The Ethernet port supports Auto-Negotiation, so either a patch cable or crossover cable will work. Press the *Discover* button.
4. The ESTeem 195M/H/C will be displayed (Figure 2). If the ESTeem 195M/H/C is not on the same IP subnet as the computer, double click on the IP, Netmask or Gateway and make the necessary changes. Press the *Apply Changes* button when complete.

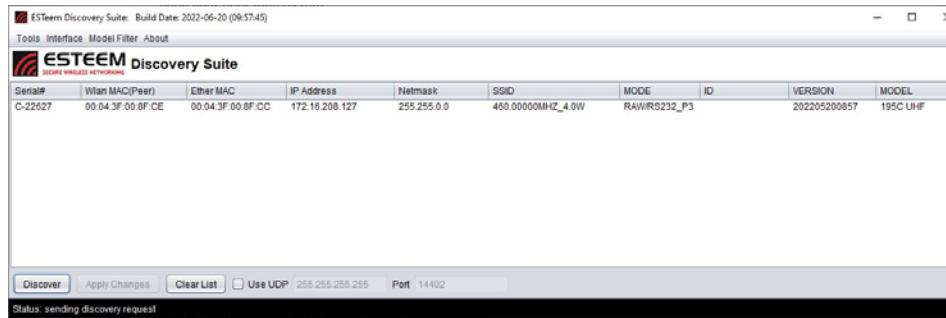


Figure 2: ESTEEM Discovery Utility

5. If changes were made to the IP address, you will need to press the *Discover EST Modems* button again to show the changes. Right-mouse click on the 195M/H/C (Figure 3) and select *Configure Radio* button to begin programming.

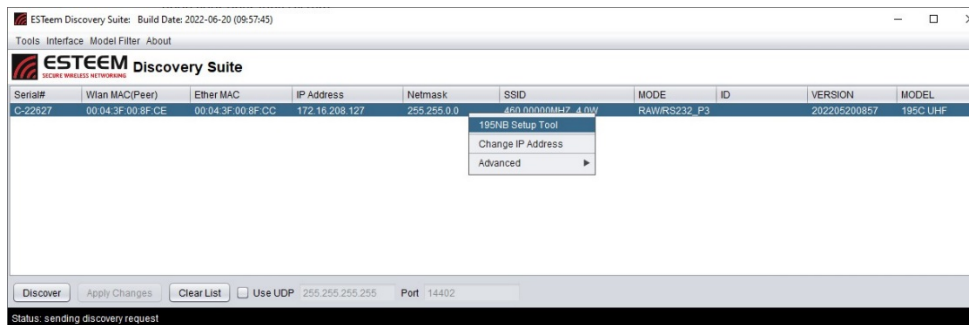


Figure 3: Opening Radio Configuration Software

Wizard Page

The Wizard Page is the default page entered when the 195M/H/C Configuration Utility is opened. If the utility was opened through the Discovery program, the current configuration parameters for the modem will be displayed (Figure 4). If the 195M/H/C information is not displayed, press the *Read Config* button to continue.

The majority of the radio's configuration can be entered from the Wizard tab as shown in all programming examples from Chapter 4. Setting the modem's address, destination, frequency, port settings and operating mode are all available from this wizard configurator. Any changes made on the wizard menu will be saved to the listed 195M/H/C when the *Write Config* button is pressed.

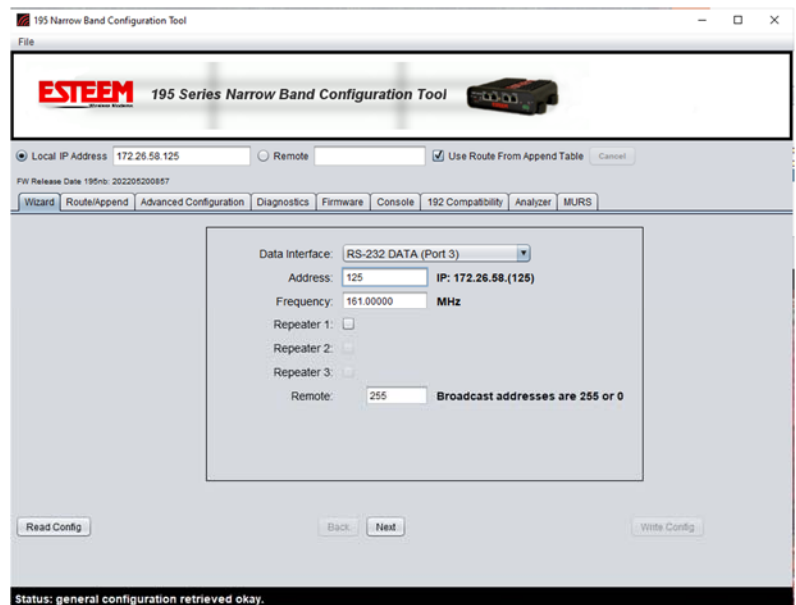


Figure 4: Configuration Tab

Advanced Configuration

The Advanced Configuration tab will allow you direct access to any of the individual software commands in the ESTeem 195M, 195H or 195C. The following sections describe the individual tabs and how they are used.

Read Configuration

The 195 Series Narrow Band Configuration Tool provides a graphical interface to the individual software commands for the ESTeem 195C or 195M. On the Configuration tab the software commands can be displayed by their category.

- All - Display the status of all software commands (Figure 5)
- Change – Display commands changed from factory default
- Radio – Radio configuration commands
- Serial – Serial configuration commands
- PLC – PLC emulation commands
- Networking – Ethernet network commands
- Sensor – 4/20mA configuration commands
- System – System configuration commands

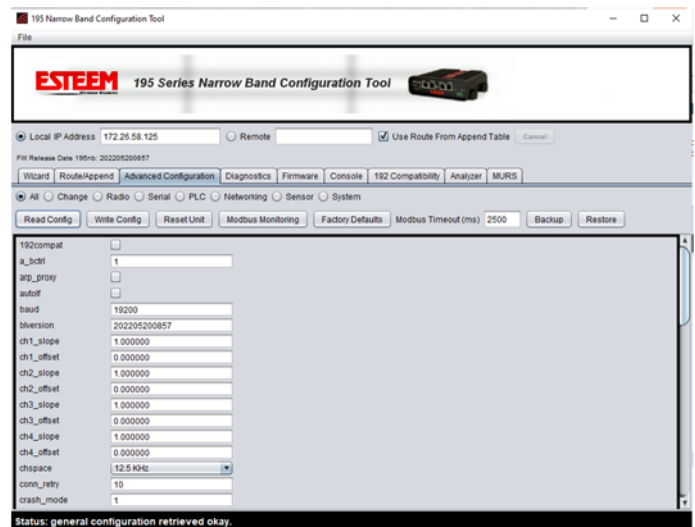


Figure 5: Advanced Configuration menu

Pressing the *Read Config* button with any of the above radials selected will display the commands associated with the selection.

Read Remote 195C or 195M Configuration

The software commands can read in the same way from a remote ESTeem 195M/H/C through the wireless network. A direct path entry or repeater route can be used to read the configuration. If the repeater routes are already defined for the network (using the Route/Append tables), you can just enter the destination address and check the Use Route from Append Table check box.

Write Configuration

Any software command displayed after reading the configuration can be modified. Once the commands have been changed, press the *Write Config* button. The modem will save the changes and reboot. The wire configuration can also be sent through repeaters. For example in Figure 7, the commands listed were written to ESTeem address 184 using address 183 as a repeater (183,184). If the repeater routes are already defined for the network (using the Route/Append tables), you can just enter the destination address and check the Use Route from Append Table check box.

Reset Unit

Pressing the *Reset Unit* button performs the same action as pressing the Reset button on the face of the 195M/H/C. The modem will discard any unsaved commands and read the program from the non-volatile memory. This can be performed on a remote ESTeem.

Factory Defaults

Pressing the *Factory Defaults* button will temporarily reset the software commands to factory default settings (see Appendix A for all default values). Factory Default settings will not be saved unless Write Config is pressed.

Modbus Monitoring

The ESTeem 195M/H/C support ModbusTCP protocol for access to multiple operating parameters in the wireless modem. Receive signal strengths, background noise, input voltage, and packet transmissions are a few of the parameter available though the open ModbusTCP protocol. There are multiple methods for extracting the data from the 195M/H/C, but the Configuration Utility has simple data interface on the Configuration Tab. Pressing the *Modbus Monitoring* button once will start the data monitor of either the local ESTeem 195M/H/C or the remote defined in the Route/Append tab (Figure 6).

Note: For remote Modbus Monitoring, the route to the remote locations MUST be defined in the Route and Append tables. See Chapters 4 and 5 for routing configuration.

The 195 Narrowband Configuration Utility will update the current status of the operating parameters until the *Modbus Monitoring* button is pressed a second time. If multiple repeaters are required to access a remote or the Modbus monitoring is used on a busy network, the Modbus Timeout parameter may need to be adjusted.

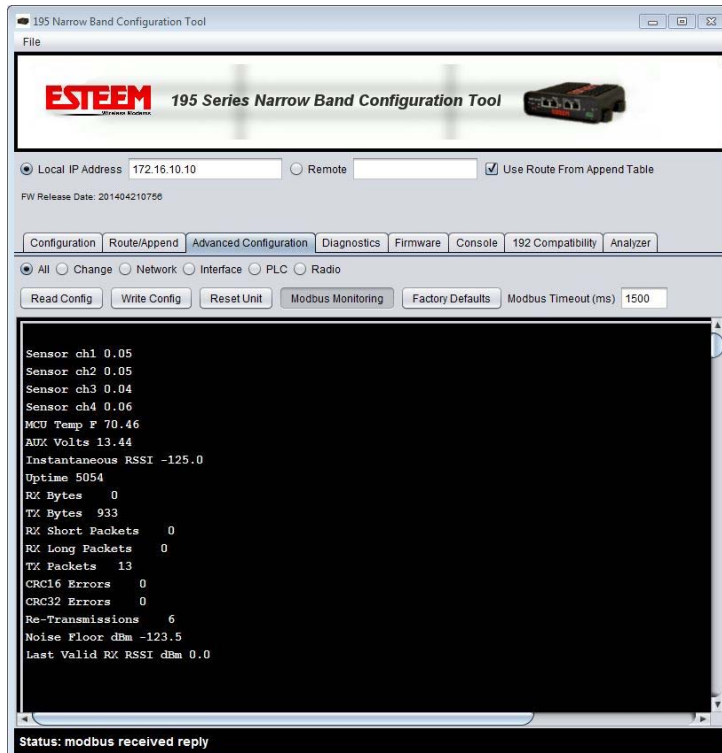


Figure 6: Modbus Monitoring Screen

The following are the Modbus registers supported in the ESTeem 195C and 195M on Port 502. Registers are mapped as 32-bit floating point numbers (2 registers each):

- 1000 (4-20 mA channel 1)
- 1002 (4-20 mA channel 2)
- 1004 (4-20 mA channel 3)
- 1006 (4-20 mA channel 4)
- 1008 (MCU temperature in F)
- 1010 (Auxiliary voltage - 0 if not connected)
- 1012 (Instantaneous RSSI dBm from non-ESTeem 192/195 radios)
- 1014 (Radio uptime in seconds)
- 1016 (Total RX bytes received)
- 1018 (Total TX bytes sent)
- 1020 (Number of header blocks / short packets (UA, SABM, etc) received)
- 1022 (Number of long packets received (> 1 block))
- 1024 (Number of transmitted packets)
- 1026 (Number of failed error correction on headers)
- 1028 (Number of failed error correction on data)
- 1030 (Number of re-transmits (if retries and acks enabled))
- 1032 (Average noise floor in dBm)
- 1034 (Power level of last valid packet received from ESTeem 192/195)
- 1036 (0/1 Ethernet link up/down)
- 1038 (Model Serial Number)

Example of using modpoll utility with 195 narrow band series

```
modpoll -l 2000 -o 2 -m tcp -r 1000 -c 19 -t3:float -a 101 172.18.9.5
```

-l 2000 = poll rate in milliseconds

-o 2 = timeout in seconds

-m tcp = modbus/tcp protocol

-r 1000 = start register

-c 19 = number of registers to read

-t3:float = 32-bit floating point type 3 -a = slave address (can be same as last octet of ip address to read over ethernet, otherwise look in append table to determine if this should be a wireless query) ip-address of unit to read from if slave address = last octet or act as gateway to access remote slave (wireless requires slave to be in gateway append/route tables)

reference:

<http://www.focus-sw.com/fieldtalk/modpoll.html>

Backup and Restore Configuration File

The 195M/H/C's configuration can be saved as a file to the computer. This file can then be later opened and saved to another 195M/H/C. To save the configuration of the selected modem, press the *Backup* button or right-mouse click anywhere in the software command configuration window (Figure 7) and select "Save Configuration from Selected Modem to File".

To load a previously saved configuration to an ESTeem 195M/H/C, press the *Restore* button or right-mouse click and select "Load Configuration From File to Selected Modem" after the right-mouse click to write the program to the new ESTeem.

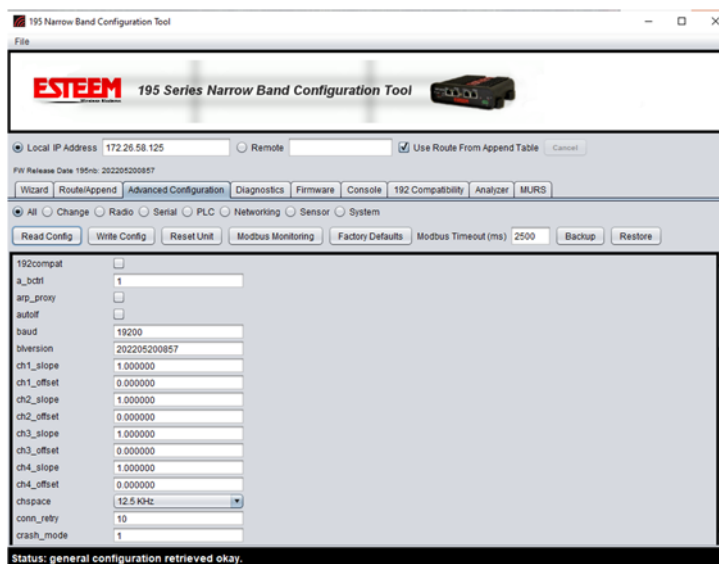


Figure 7: Save and Load Configuration

Update Firmware

The 195C, 195M and 195H firmware is updated by pressing the *Update Firmware* button on the Firmware tab of the utility. The firmware version is tied to the release version of the utility and is listed below the address (Figure 10). The release of any new firmware version will be listed on the products web site address:

<http://www.esteem.com>

Model 192 Compatibility

The 195C and 195M require “training” to operate with legacy ESTeem Model 192C, 192CHP, 192M or 192MHP wireless modems. The training process and network installation procedures are found in Appendix C (Model 192 Integration) of this User’s Manual.



Figure 10: Save and Load Configuration

Programming Console

The 195 Series Narrow Band Configuration Utility has a console window to allow direct access to enter and modify software commands. The console uses Telnet to the 195M/H/C and will link to the modem when the Console tab is selected. If communication is lost to the modem (on reset) you may have to press the *Connect* button to again see the command prompt (CMD:).

Diagnostics

The diagnostic menu tests the wireless communication between multiple ESTeem 195M/H/C or Model 192 series wireless modems. The diagnostic test will send multiple sized data packets to the test addresses listed and also measure the receive signal strength wireless link. Press the *Add Units to Test* button to enter the destination ESTeem addresses or you can enter a range (example 20-26 is all addresses 20 through 26) in the “Add Units to Test” box (Figure 11). Pressing the *Start Tests* button once will begin the testing and pressing again will stop the testing.

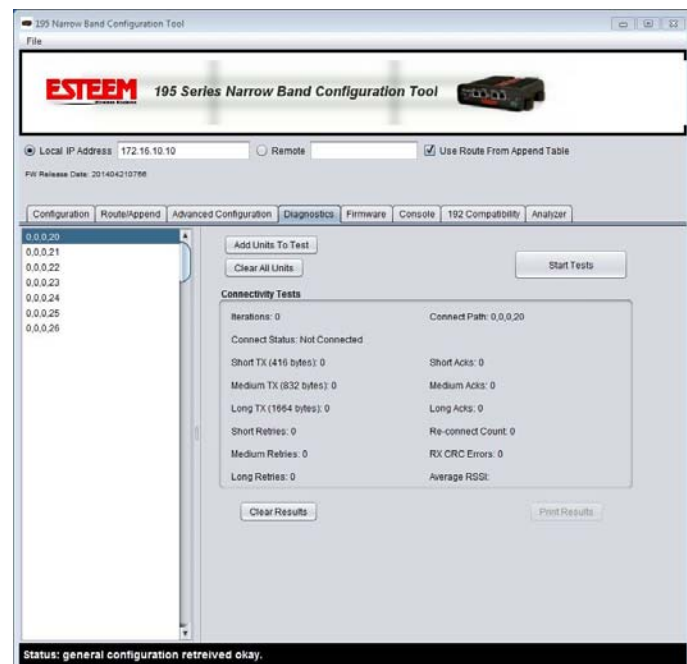


Figure 11: Save and Load Configuration

Spectrum Analyzer

A feature of the ESTeem Model 195M/H/C configuration utility is the spectrum analyzer found in the Analyzer tab (Figure 12). A spectrum analyzer is used to visually represent the radio spectrum around a programmed frequency. The analyzer displays the signal amplitude on the vertical axis and the frequency on the horizontal axis.

The software utility uses the ESTeem Model 195C or 195M receiver to visually display the radio activity in the operating frequency band. The Model 195C can be used to analyze 450-470 MHz frequency band and the 195M can be used for the 150-174 MHz frequency. The analyzer has proven very accurate when compared to the results of a bench model analyzer.

The software spectrum analyzer has many of the standard features you would find on a laboratory grade analyzer. The following is a summary of the configuration parameters:

Center Frequency – This frequency value can be entered with a keyboard or used as a drop down. The center frequency represents the center line in the analyzer.

Span – The span is the total frequency bandwidth show on screen. For example in Figure 11, the span is set to 5 MHz. The analyzer is broken up into a 10 x 10 grid. The total frequency span of 5 MHz would represent 500 KHz (5MHz/10) per division.

Reference Level – The reference level is the value for the top line of the analyzer. The reference level in conjunction with adding or removing external attenuation will allow for measurements of both small and high power signals.

Ext Atten – External attenuation. This number will need to be adjusted if an external attenuator is used.

Display Line – Displays horizontal line on screen with signal measurement (Figure 12).

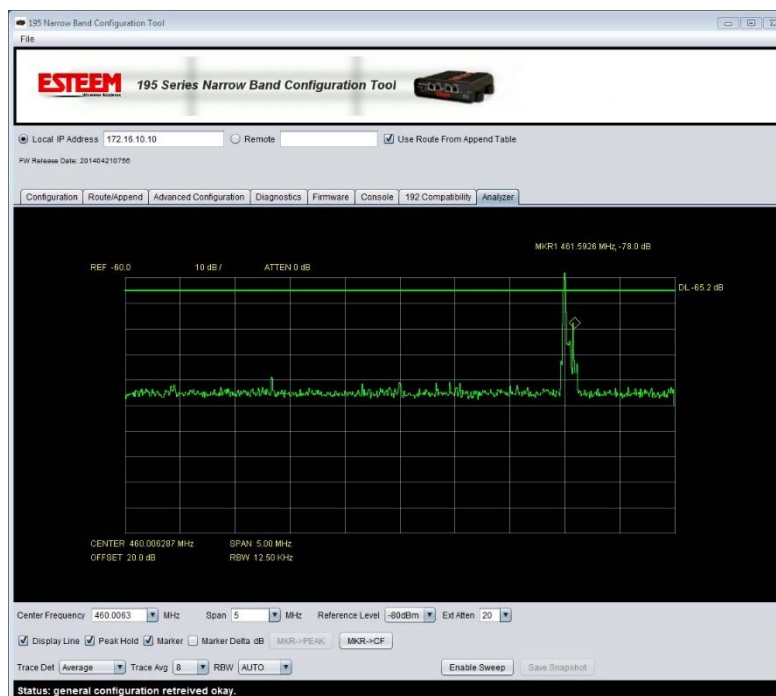


Figure 11: Save and Load Configuration



Figure 12: Marker and Display Line Example

Peak Hold – This will keep the last trace draw on the screen. This is valuable for measuring quick transmissions over time.

Trace Det – Trace detection

Trace Avg – Trace averaging

RBW – Resolution Bandwidth

Marker – The marker is a visual reference tool for analyzing points on the screen. When the marker check box is set, clicking on the screen will place a yellow diamond marker (Figure 12) that can be moved to any point on the screen. The frequency and signal level at the marker location will be shown in the upper right of the screen.

Marker Delta – Checking this box will display a second marker (Figure 12) and show the difference (delta) in frequency and signal strength from the first marker.

Press the *Enable Sweep* button once to turn on the analyzer and press a second time to turn it off.

MURS Frequencies – Model 195M Only

The FCC has set aside five frequency channels in the VHF band for Multi-Use Radio Service (MURS) operation. By operating on these frequencies and following the specific rules such as limited power (2 Watts) and height (60 Feet), the Model 195M can be used without obtaining an FCC site license.

MURS Channels

Channel 1 – 151.820 MHz

Channel 2 – 151.880 MHz

Channel 3 – 151.940 MHz

Channel 4 – 154.570 MHz

Channel 5 – 154.600 MHz

Notes:

1. The highest point of any MURS antenna must not be more than 18.3 meters (60 feet) above the ground or 6.10 meters (20 feet) above the highest point of the structure on which it is mounted.
2. RF output power is limited to 2 Watts
3. Repeater operation is not allowed.

The ESTeem Model 195M supports operation within the MURS frequency bands. Select the MURS tab in the configuration utility (Figure 13) and set the frequency of operation. The output power of the modem will be set at 2 watts and the repeater route/append table will be disabled.

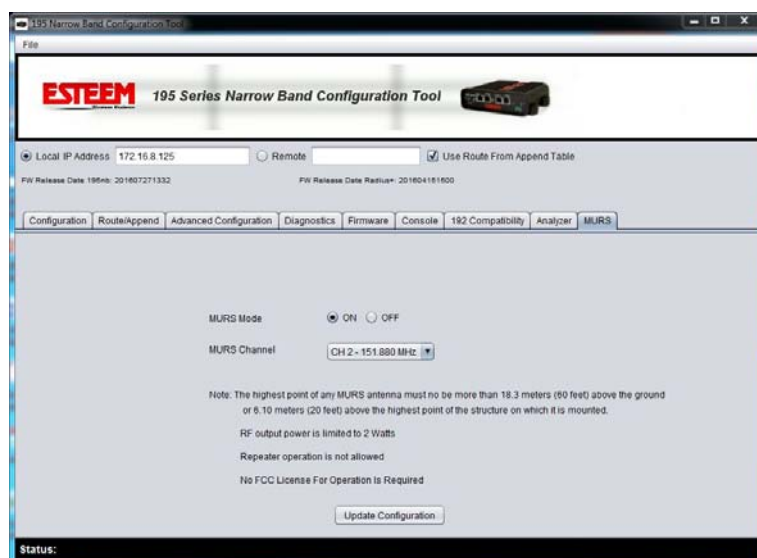


Figure 13: MURS Configuration

ESTeem offers different types of antennas ranging from $\frac{1}{4}$ wave to $\frac{5}{8}$ wave in physical size. The user choice is dependent on the application.

Communications in the VHF and UHF bands are normally over "**Line of Sight (LOS)**". Looking from the antenna of one wireless modem you must be able to see the antenna of the wireless modem you wish to communicate with. If a large object obstructs the line of sight view it is unlikely that satisfactory communications will result. This means you must relocate the antennas or use the repeating feature and a second modem to go over or around the object.

The Model 195C, 195M and 195H products are allowed by the FCC to use high gain directional antennas.

It is noted that a $\frac{1}{4}$ wave antenna that does not have ground plane radials requires a ground plane to operate at maximum efficiency. This can simply be a conducting surface under the antenna that is a $\frac{1}{4}$ wavelength in diameter. For the Model 195C (450-470 MHz) this is approximately 6.5 inches. A conducting surface can be anything from the rooftop of an automobile to a file cabinet.

Coax Cables

To minimize signal loss, the overall length of the coaxial cable should be as short as possible. To avoid corrosion select coaxial cable manufacturers with tinned copper braid, where possible. Listed below are representative cable losses in db/100ft at the VHF and UHF frequencies:

Frequency (MHz)	RG-58u	LMR 195	RG-8 (solid)	LMR600	1/2" Helix
150-174	-3.8	-4.4	-1.2	-0.964	-0.88
217-220	-5.4	-5.4	-1.7	-1.4	-0.95
402-420	-7.9	-7.8	-2.4	-1.72	-1.36
450-470	-9	-7.8	-3	-1.72	-1.45

In a severe noise environment, it may be desirable to use a double shield type of coax cable such as RG-214/U.

Note: *Pre-made coax cables can be purchased from the factory. A -3 dB loss means you have lost 1/2 of your signal. A +3 dB gain means you have doubled (x2) your signal.*

Keep the antenna feedline as short as possible to minimize losses.

Extreme care must be taken when attaching coax connectors to the antenna feedlines. If there is any error in making this connection the output of the transmitter will be greatly reduced.

Weather Proofing Coax Connections

1. Lightly coat the threads of the connectors with silicone lubricant prior to assembly (See Note 1) and hand tighten. Make sure to use the silicon sparingly so when assembled, any excess does not get on center conductor. Care should be taken not to get any lubricant on the center conductor.
2. Wrap the connector assembly with a non-adhesive silicone tape, EST part number AA243, for weather proofing (See Note 2 and instructions below).
 - a) Clean surface to be wrapped. Cut off length to be used.
 - b) Peel back a short length of protective film. Keep tape clean and dry.
 - c) Begin with one complete overlap of tape onto itself.
 - d) STRETCH CoaxWrap while continuing to wrap object with “half-laps”, removing clear film as you go (Figure 1). For greater pressure resistance, use 2 or more tightly wrapped layers.
 - e) End of tape at final wrap should be completely positioned onto itself.

Note: CoaxWrap’s bond begins to cure immediately upon contact with itself. Repositioning or removal is not recommended after 2 minutes of wrapping.

3. Apply an electrical coating (sealing agent), over the vapor barrier patch for added protection (See Note 3).

NOTES:

1. Dow Corning RTV-3140 or equivalent.
2. CoaxWrap, CW10B or equivalent.
3. SCOTCHKOTE, 3-M Company, or equivalent.



Figure 1: Installation Example

Grounding

All building mount antennas require attachment to a good earth ground for optimum efficiency. Contact a reputable local communications shop for procedures for your area.

Lightning Arrestors

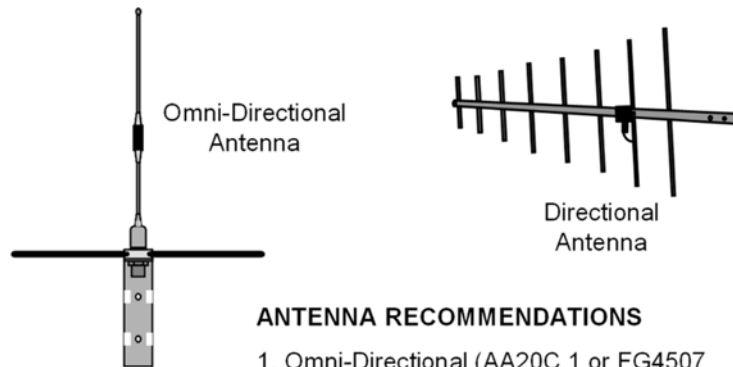
Lightning arrestors should be used on all external building mount antennas for personal protection and to minimize damage to the transceiver during lightning storms. The units should be installed as per manufacturers instructions provided with the device.

Enabling Transmitter for SWR Testing

The ESTeem 195C, 195M and 195H are packet burst wireless modems, so measurement of the forward and reflected power during operation is difficult. To enable the transmitter for measurement with a directional wattmeter, enter the following software command:

radio on/off – Transmitter enable command

Model 195C Cabinet Mount Outdoor Fixed Base Hardware Diagram



ANTENNA RECOMMENDATIONS

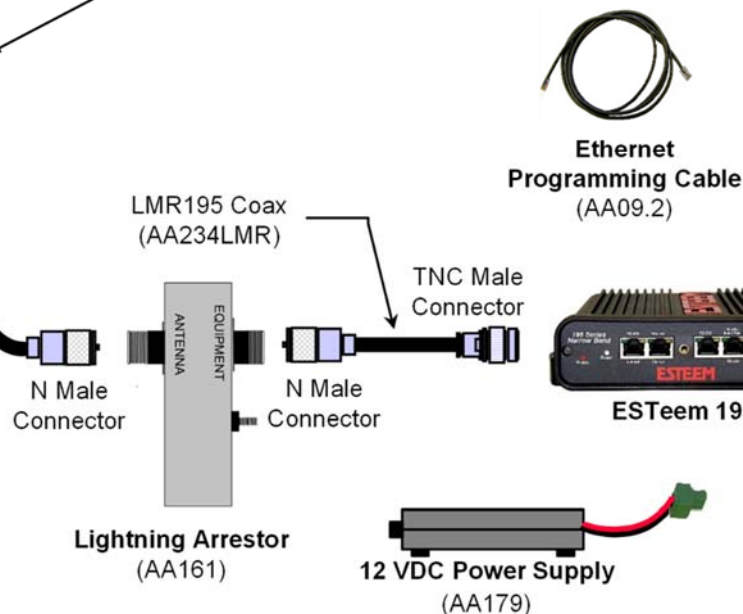
1. Omni-Directional (AA20C.1 or FG4507 & FG4607).
2. Directional (AA202C.1).

NOTES

1. Use coax cable runs as short as practical to minimize cable losses.
2. Vapor wrap all external antenna coax connections with vinyl wrap (AA243)
3. Contact EST for recommendations regarding antenna mounting hardware and installation tips.
4. Ground antenna structure, base and lightning arrestor.

Antenna Feedline Recommendations

		Antenna Part No.		
	Feedline Type	20C.1	202C.1	FG4507/ FG4607
< 50 ft. Length	RG-8	AA237	AA237	AA237
> 50 ft. Length	Helaix	AA236	AA236	AA236



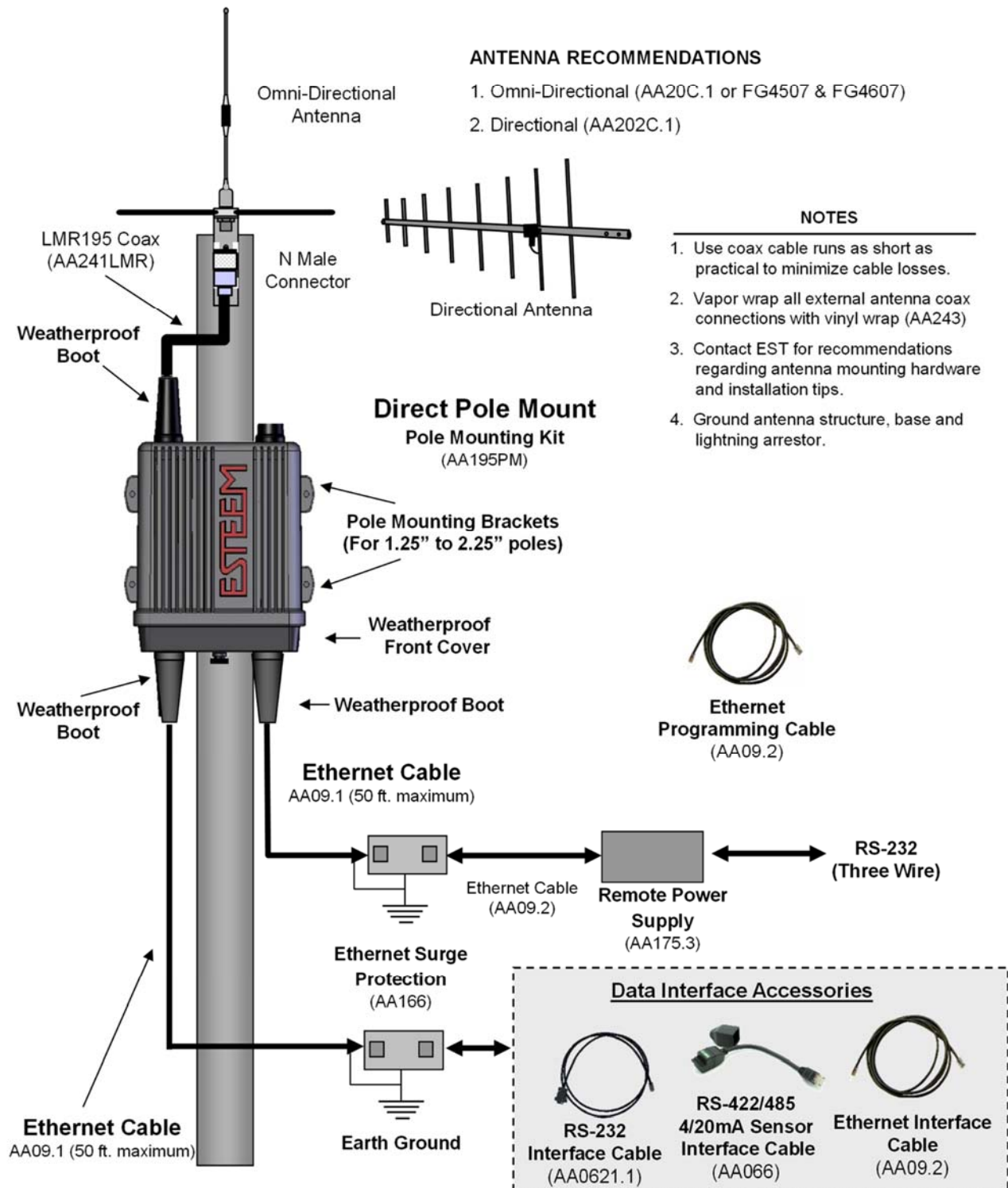
Data Interface Accessories

RS-232 Interface Cable (AA0621.1)

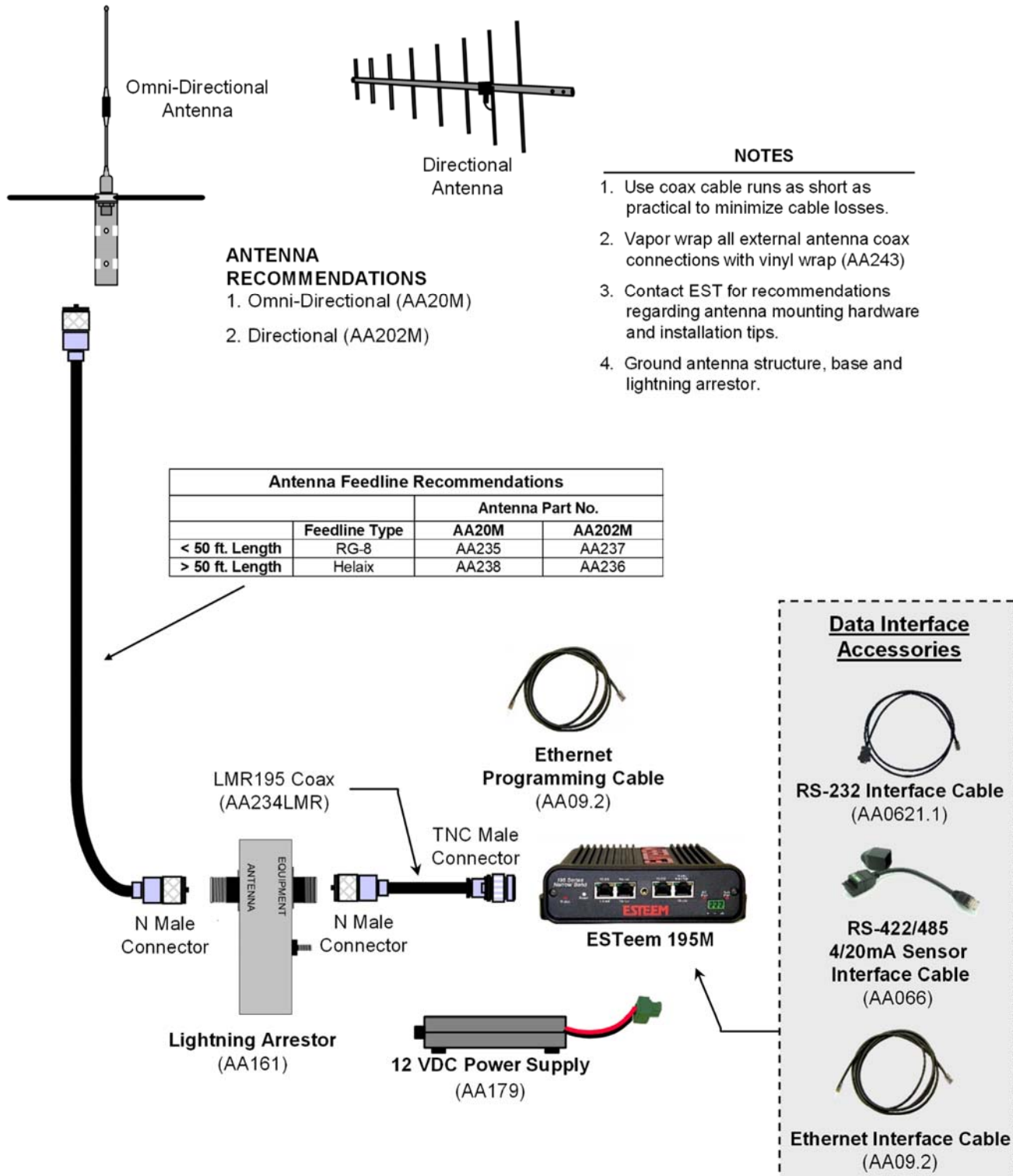
RS-422/485 4/20mA Sensor Interface Cable (AA066)

Ethernet Interface Cable (AA09.2)

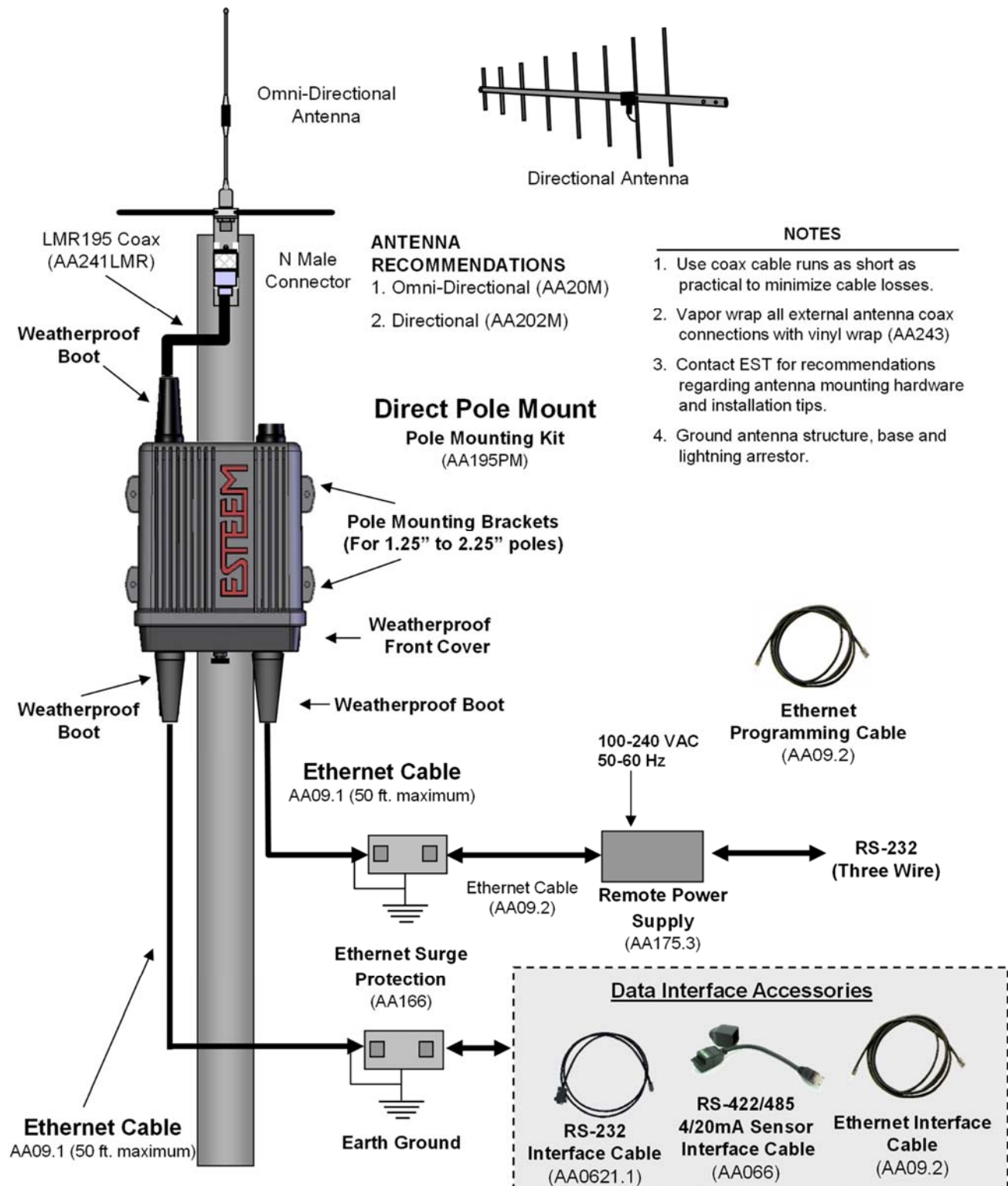
Model 195C Pole Mount Outdoor Fixed Base Hardware Diagram



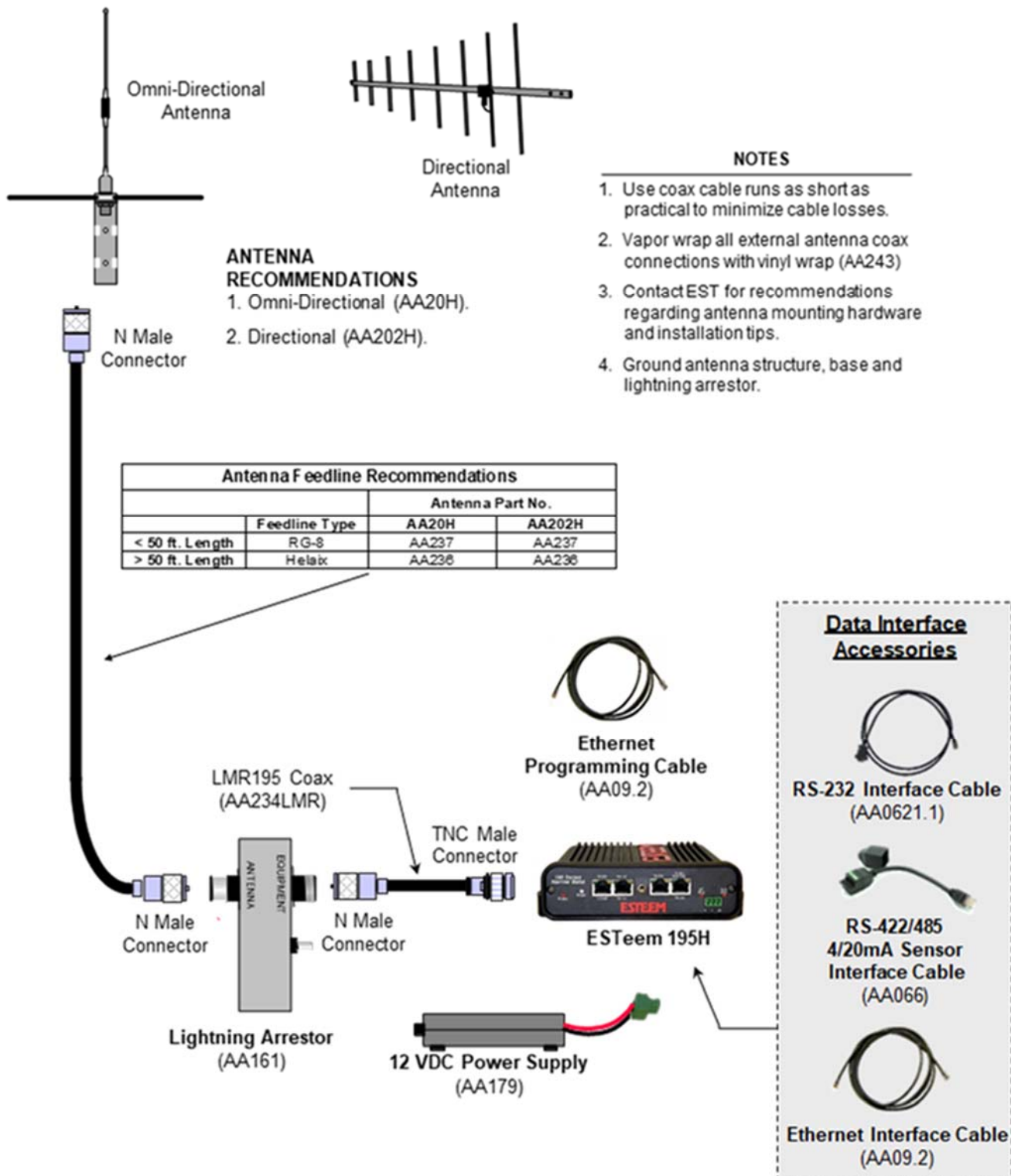
Model 195M Cabinet Mount Outdoor Fixed Base Hardware Diagram



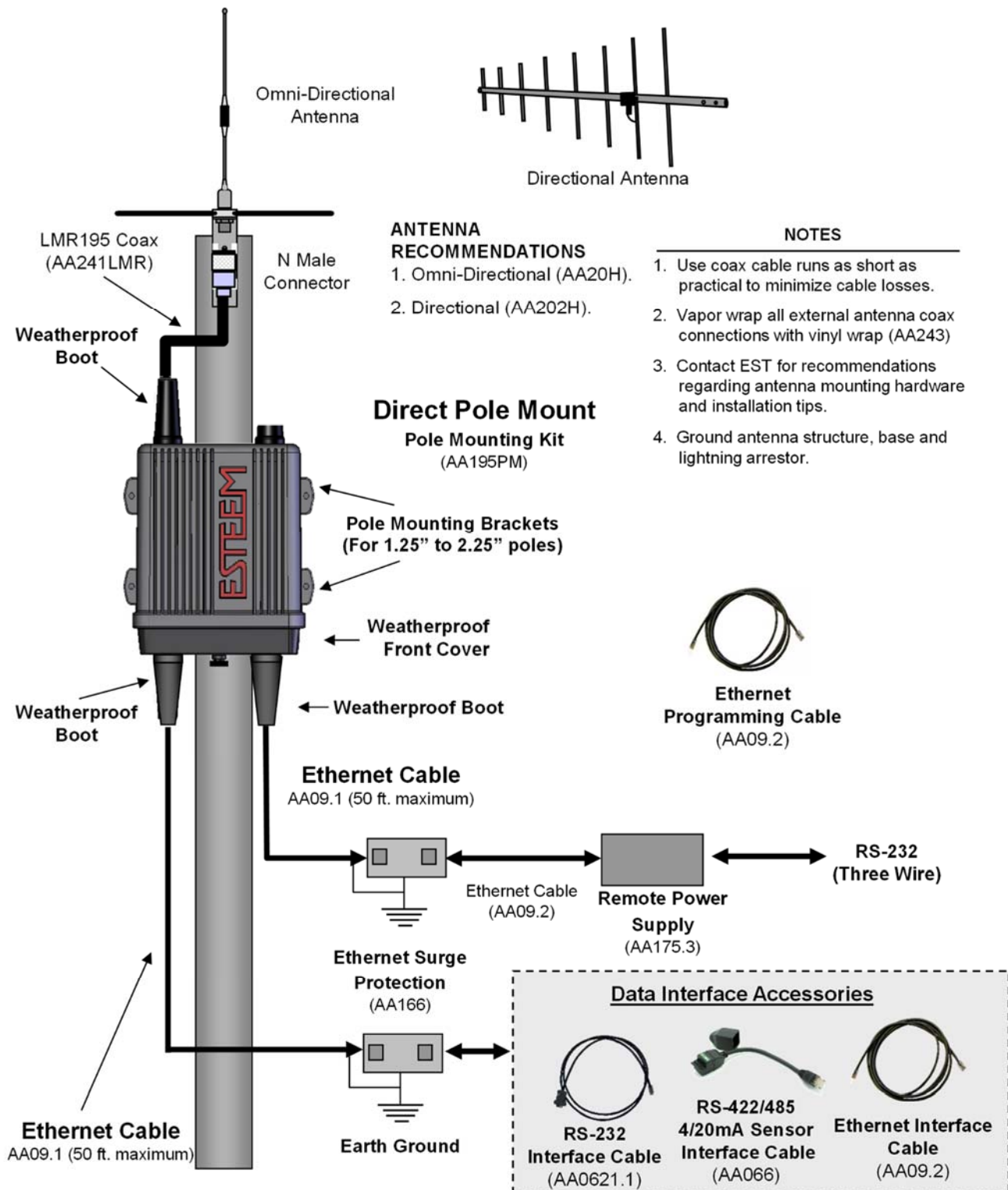
Model 195M Pole Mount Outdoor Fixed Base Hardware Diagram



Model 195H Cabinet Mount Outdoor Fixed Base Hardware Diagram



Model 195H Pole Mount Outdoor Fixed Base Hardware Diagram



Listed below in alphabetical order are the definitions of the ESTeem software commands. All software commands are entered lowercase. The commands are displayed below with the full software command and the shorted command underlined.

? or help

help Displays the modem model as well as the certification, FCC ID, Canadian DOC ID and serial number of the modem and sub help menus.

help all Displays all commands switches and arguments.
help change Displays only the commands that are changed from factory default.
help radio Displays radio commands switches and arguments.
help serial Displays serial commands switches and arguments.
help plc Displays plc commands switches and arguments.
help networking Displays networking commands switches and arguments.
help sensor Displays sensor commands switches and arguments.
help system Displays system commands switches and arguments.

192compat (on/off)

This function sets the compatibility with legacy Model 192 products. The software command lowers the data rate to match the Model 192 (9,600 bps) running in narrow band configuration.

Factory Default = off

a_bctrl (1-6)

This function selects the Rockwell Automation (Allen-Bradley) DF1 controller protocol. Full emulation is enabled with the PLC Protocol (plcproto) software command.

1 = Full Duplex DF1 with CRC Error Checking
2 = Full Duplex DF1 with BCC Error Checking
3 = Half Duplex DF1 with CRC Error Checking
4 = Half Duplex DF1 with BCC Error Checking
5 = Radio Modem Protocol with CRC Error Checking
6 = Radio Modem Protocol with BCC Error Checking

Factory Default = 1.

appendroute (l#,r#,a1,a2,g)

The appendroute command appends routes to a connect address that are defined by the ROUTE command.

l# = Location of appended address in memory. Lines numbers from 1 to 64.
r# = Appended route number. Route numbers 1 to 64.
a1 = Address of first destination node. Address numbers from 1 to 254.
a2 = Address of last destination node. Address numbers from 1 to 254.
g = Group feature is enabled by inserting a 1 in this field.

Factory Default = 0. APPEndru 0 disables this feature.

Note: *This command is used in conjunction with the ROUTE Command.*

arpproxy (on/off)

The arpproxy command enables the ARP Proxy for Ethernet communications. See Chapter 5 for full details on Ethernet communication.

Factory Default = off

autolf (on/off)

This option when enabled will add a line feed character to the end of serial packets coming into the radio before sending over the RF.

Factory Default = off

baud (2400-1000000)

This command sets the baud rate for the serial device interface (SDI). The other commands to configure the serial port are the data bits, parity and stop bits.

Factory Default = 19200

blversion

This is a non-configurable option that displays the radio's currently installed Bootloader version.

ch(1-4)_slope (-360 - 360)

This allows you to set the default slope value for the 4 different channels of the 4/20mA sensor in the radio.

Factory Default = 1.000000

ch(1-4)_offset (-360 - 360)

This allows you to set the default offset value for the 4 different channels of the 4/20mA sensor in the radio.

Factory Default = 0.000000

chspace (1-4)

This command will set the channel spacing for the ESTeem 195M/H/C.

- 1 = 6.25 kHz channel spacing
- 2 = 12.5 kHz channel spacing
- 3 = 25.0 kHz channel spacing (Model 195H Exclusive)
- 4 = 50.0 kHz channel spacing (Model 195H Exclusive)

Factory Default = 2 (12.5 kHz channel spacing)

conn_retry (0-99)

This function sets the number of times the radio will attempt to retry the initial connect command if a connection is not made.

Factory Default = 10

connect (r1,r2,r3,da)

This command performs the connect to a destination ESTeem. This function supports a direct connect or a connect through a maximum of three repeater nodes.

r1 = ESTeem address (1 to 254) of repeater 1.

r2 = ESTeem address (1 to 254) of repeater 2.

r3 = ESTeem address (1 to 254) of repeater 3.

da =Destination address (1 to 254).

crash_mode (0-3)

This command will enable the radio to produce a crash dump if the radio crashes for any reason. What the radio does with this crash dump is determined by the value set to crash_mode.

0 = Disabled

1 = Crash Dump is saved in memory.

2 = Crash Dump is sent out Ethernet.

3 = Crash Dump is both saved and sent.

Factory Default = 1

csthresh (-150 through -50)

The csthresh command sets a value in the radio (in dBm) of when to NOT send a transmission because another radio is attempting to use the frequency.

Factory Default = -80

databits (7-8)

This command sets data bits in the serial device interface. This command used with baud, parity and stopbits commands.

Factory Default = 8

delim(1-2) (-1 - 255)

This command sets the delimiter flags the serial device interface. This configures what symbols the radio looks for to end the packet and set over RF. If both delimiters are set the radio will only transmit when it sees delim1 followed by delim2. These are hex values represented in Decimal with -1 being Disabled.

Factory Default = -1

deviation (X)

This sets the radio receiver deviation value. This setting is only changed when the radio has 192 Compatibility enabled and is changed automatically through the training process.

Factory Default = 2000

disconnect

The disconnect command. The execution of this command immediately initiates a disconnect request with the currently connected node.

factory

The factory default command. The execution of this command causes the ESTeem to restore the command table values from factory values that are stored permanently in memory. This will allow the user the ability to restore the ESTeem to factory conditions during testing or set-up. Unless the **save** command is used the settings will revert to last saved settings on reset.

frequency (150.000 - 174.000), (217.000 - 220.000), or (440.000 - 470.000)

This command programs the frequency of operation in the ESTeem 195M/H/C. The frequency is entered in MHz. Available frequency ranges for each model listed below:

Model 195M = 150.000-174.000 MHz | Default = 161.000 MHz

Model 195H = 217.000-220.000 MHz | Default = 218.00 MHz

Model 195C = 440.000-470.000 MHz | Default = 460.00 MHz

gw_addr (*IP Address)

This command sets the Gateway address in the ESTeem 195M/H/C.

Factory Default = 172.16.8.1

hard_reset

The immediate software reset command for the ESTeem. This reset will happen immediately upon sending the command.

ident

This command sets the modem identification for the ESTeem 195M/H/C. This is a simple alpha-numeric value set in the modem for easy identification in the network. This command can take up to 12 characters long and could be used for site name, location or any value to easily identify.

Factory default = <blank>

ip_addr (*IP Address)

This command sets the IP address for the ESTeem 195M/H/C.

Factory Default = 172.16.8.1xx (where xx is the last two numbers of the serial number).

keepalive_proxy (on/off)

This command enables the Keep Alive Proxy within the radio. When active the radio will watch for a successful keepalive packet, once one passes through, the radio will answer for the device instead of passing the packet over RF.

Factory Default = on

long_packet_delay (0-10000)

This command sets the delay time of long packet communication for the radio. Long packet communication would be considered data, either serial or ethernet between radios.

Factory Default = 2

maxbsywait (25 to 250)

The maxbsywait command sets the limit for the time the modem will wait when a carrier is detected. The units of time are 1/50th of a second.

Factory Default = 150

modbus_mode (0-1)

This setting changes which mode of Modbus the radio will use when the plcproto is set to Modbus RTU/ASCII.

| 0 = RTU | 1 = ASCII |

Factory Default = 0

modbus_rtu_timeout (0-16777215)

This sets the amount of timeout the radio will use when in Modbus RTU Mode.

Factory Default = 30

multid (on/off)

This setting puts the radio in a MultiD mode brought forward from the Model 192 radios. When in this mode data must be sent to the radio with the intended receive radio's address imbedded in the front of the data packet.

Factory Default = off

murs_chan (1-5)

These settings are the available MURS channels for the Model 195M radio only. The radio will only operate on the selected MURS channel when murs_mode is set to on.

Ch 1 = 151.820 MHz

Ch 2 = 151.880 MHz

Ch 3 = 151.940 MHz

Ch 4 = 154.570 MHz

Ch 5 = 154.600 MHz

Factory Default = 2

murs_mode (on/off)

This setting only affects the Model 195M and when enabled will lock the radio to 2W output power max and will only operate on one of the selected MURS Channels from the murs_chan setting in the radio.

Factory Default = off

netmask (*IP Address Netmask)

The netmask command sets the IP netmask for the ESTeem 195M/H/C. This command is used in conjunction with the ip_addr and gw_addr commands to complete IP address for the ESTeem.

Factory Default = 255.255.0.0

network (0-255)

Network identification code. This is used to program a common code for all modems in the customers network so that another facility on your frequency using the same addresses will not interfere with your equipment.

Factory Default = 37

packdump (0-31)

This function enables monitoring of the data sent through the configured serial device interface (SDI). This troubleshooting tool can be used to verify the operation of the wireless network by looking at both serial devices exchanging data.

Factory default = 0

packleng (1-2000)

This command defines the length of the data packet in bytes.

Factory Default = 1500.

packmon (on/off)

Places the ESTeem in the packet monitor mode. The packet monitor modem will allow the user to monitor all wireless packets by their source, destination and repeaters. Please refer to ESTeem Packet Monitor Engineer Report for complete details on the operation of this feature.

Factory Default = off.

parity (0-3)

This command defines the parity setting on the serial device interface. This command is used in conjunction with baud, databits, and stopbits to set the complete serial configuration.

| 0 = None | 1 = Even | 2 = Odd |

Factory Default = 0

passp <Passphrase> (1-64 characters)

This software command will use the characters in the Passphrase to generate the AES encryption key and is used in conjunction with the rf_encrypt command. The key is generated from 1-64 characters entered after the passp command (example: passp 12345678) and is case sensitive. Typing the passp command without any arguments will display the current Passphrase.

Factory Default = 12345678

plcproto (0-4)

This command defines the PLC protocol emulation used on the selected serial device interface.

- 0 = Transparent
- 1 = Rockwell Automation DF1
- 2 = Modbus RTU/ASCII Protocol
- 3 = Opto22 Protocol
- 4 = DNP V3 Protocol

Factory Default = 0

program (1-254,1-254,1-254,1-254)

This command is used to remote program another ESTeem unit. It is configured similar to the connect command. Example prog 10 (Unit 10 is the address of the remote unit). Remote programming can be completed through repeaters. When a connection has been made with the remote ESTeem the RPG: prompt will appear. The RPG: prompt is the command prompt of the remote modem.

radio (on/off)

The radio transmitter enable command. The ESTeem radio transmitter will cycle on and off when enabled for tuning and antenna testing procedures.

on: Enabled.
off: Disabled.

Factory Default = off

reset

The software reset command for the ESTeem. This reset will happen 2 seconds after sending the command for the radio to finish processing any other commands.

retry (0-99)

The retry command number. This is the number specifying the number of retries, retransmission of frames, that are not acknowledged. Frames are retransmitted RETRY times before operation is aborted.

Factory Default = 6

rf_encrypt (on/off)

This software command will enable an over-the-air, wireless encryption at 256-bit AES. All ESTeem 195M/H/C in the same wireless network must have the same encryption settings and keys. See software command passphrase (passp) to set the encryption key.

on = Enabled.
off = Disabled.

Factory Default = off

rfpower (1-8)

This command sets the output power on the ESTeem 195M/H/C radio modem. Each increase in value represents 0.5 watts of output power. *The 195H radio has only 2 power levels, 1 Watt and 2 Watts.

1 = 0.5 Watts
2 = 1.0 Watts
3 = 1.5 Watts
4 = 2.0 Watts
5 = 2.5 Watts
6 = 3.0 Watts
7 = 3.5 Watts
8 = 4.0 Watts

Factory default = 8 (4 Watts)

route (l#,r1,r2,r3,)

The route sets up the route table in the ESTeem. This command is used in conjunction with the append command to configure the routing table in the ESTeem 195M/H/C wireless modem. See Chapter 4 (Repeating) for complete details.

- l# = User defined route number. Route numbers 1 to 64 may be used.
- r1 = Address of first repeater. Address numbers from 1 to 254 may be used.
- r2 = Address of second repeater. Address numbers from 1 to 254 may be used.
- r3 = Address of third repeater. Address numbers from 1 to 254 may be used.

rssi

This command will display the status of the received signal strength indication (RSSI). The values displayed in dBm. Instantaneous, Noise Floor, Last Valid (dBm)

s/n

This command will display the currently set Serial Number of the radio. This is **not** a configurable value.

save

The save command. The execution of this command stores the current command values and switches.

Note: Please wait approximately two seconds **after** executing the SAVE command before turning off power to the ESTeem.

sdi

Sets the serial device interface (sdi) for the ESTeem 195M/H/C.

- 0 = None
- 1 = RS-232 Port 4 (3 wire RS-232 only with remote power)
- 2 = RS-232 Port 3 (Full RS-232 with hardware handshaking)
- 3 = RS-485 Port 1
- 4 = RS-422 Port 2
- 5 = Ethernet 10/100

Note: Port pin-out information found in Appendix B (Interface Ports)

Factory Default = 2

setcon (r1,r2,r3,da)

This command defines the destination address for the ESTeem to perform a connect when data arrives in the configured serial device interface (sdi). This function supports a direct connect or a connect through a maximum of three repeaters.

- r1 = ESTeem address (1 to 254) of repeater 1.
- r2 = ESTeem address (1 to 254) of repeater 2.
- r3 = ESTeem address (1 to 254) of repeater 3.
- da = Destination address (1 to 255).

short_packet_delay (0-3000)

This command sets the delay of short packet communications for the radio. Short packets consist of connect and acknowledgement packets.

Factory Default = 10

sread

This command will report back the current value of the 4-20mA sensors on the radio. This can be used to help tune the radio's sensors to your needs with the ch_offset and ch_slope commands.

stopbits (1-2)

This command sets the number of stop bits for the serial device interface. This command is used with baud, parity, databits to configure the serial port on the ESTeem.

Factory Default = 1.

termt (0-5000)

The serial device interface, receive termination timer value. This value is the time after the last serial data bit is received in the serial buffer that the modem will wait for further data. If additional data is received from the device, the ESTeem will make an RF packet and send to the remote ESTeem.

Factory Default = 10

tx_buffs (0-500)

Number of milliseconds the ESTeem 195M/H/C will hold open the buffer after receiving serial or Ethernet data packet before transmitting to remote.

Factory Default = 6

tx_delay (0-10000)

Number of milliseconds the ESTeem 195M/H/C will wait after receiving serial or Ethernet data packet before transmitting to remote.

Factory Default = 0

version

This command will display the current firmware version, boot loader version and firmware CRC.

vinaux

This command will display the DC voltage input in the auxiliary power is used.

xhflow (0/1)

This command enables hardware flow control for the serial ports of the radio.

| 0 = Off | 1 = On |

Factory Default = 0

zerotables

This software command will reset the Routes and Append commands to factory defaults (All blank).

Interface Ports

The ESTeem Model 195C, 195M and 195H have multiple data ports available for use. Each data interface is accessible through one of the four RJ-45 ports in the front panel of the Model 195M/H/C (Figure 1). During the configuration of the modem, one of these ports is configured as the serial data interface (SDI). All data ports not configured as the SDI are available for console programming. This chapter will provide the pin-outs and configuration of each communication and sensor port.

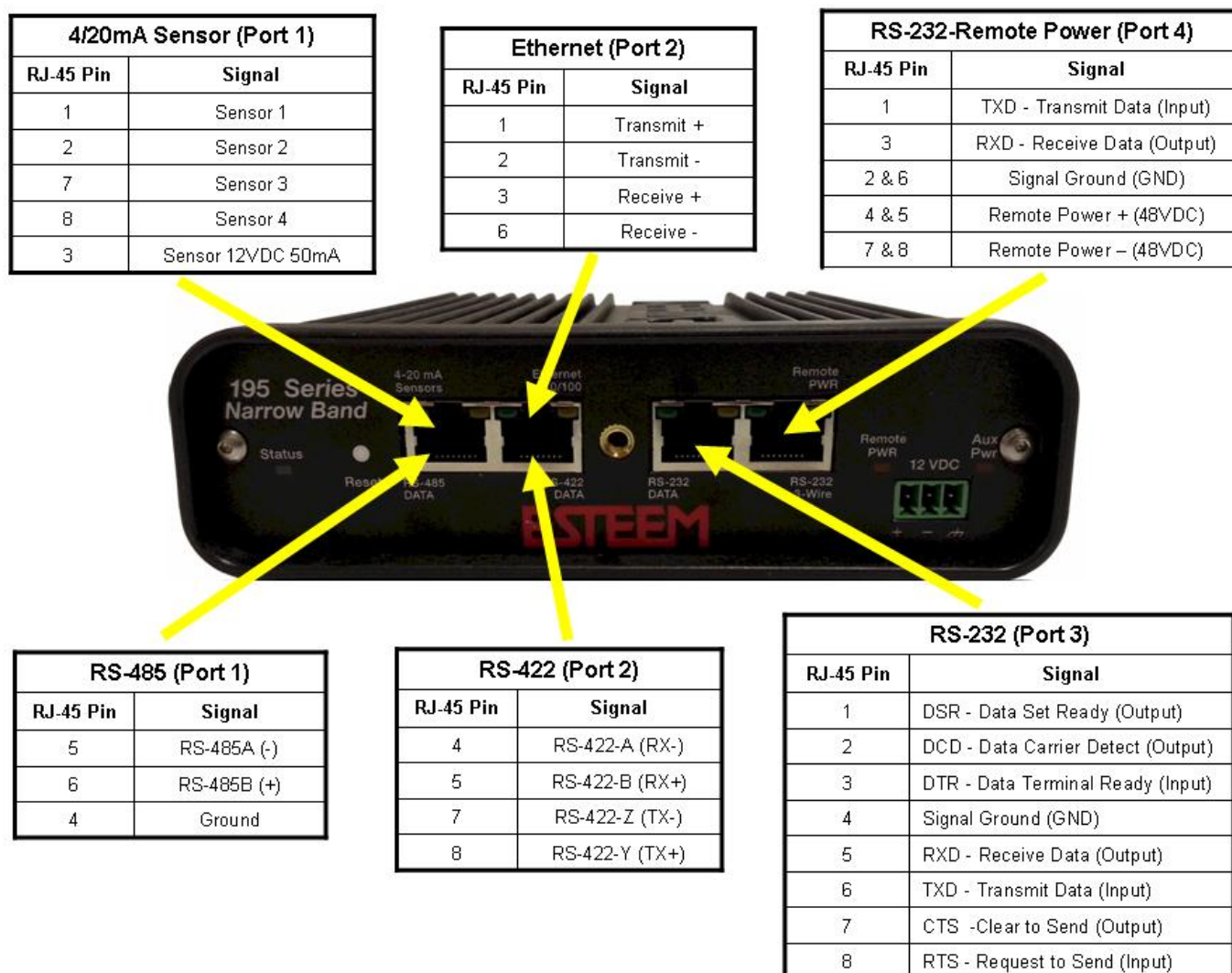


Figure 1: Model 195M/H/C Data Interfaces

Ethernet Port (Port 2)

The ESTeem Model 195M, 195H and 195C have a Full and Half-Duplex Auto-negotiation interface supporting both 10 Mbps and 100 Mbps (10/100BaseT). The port is compatible with TIA/EIA-568B cable configuration (Figure 2). A standard Ethernet patch cable (AA09.2) can be used to interface the 195M/H/C to a computer. The Ethernet port is used for both programming the Model 195M/H/C and data transfer.











RJ45 Pin No.	Wire Color	Wire Diagram	10Base-T Signal 100Base-TX Signal
1	White/Orange		Transmit +
2	Orange		Transmit -
3	White/Green		Receive +
4	Blue		Unused
5	White/Blue		Unused
6	Green		Receive -
7	White/Brown		Unused
8	Brown		Unused

Figure 2: Ethernet Interface

RS-232C Data Ports (Ports 3 and 4)

The ESTeem Model 195M/H/C have two RS-232C data interfaces on the front panel. Port 3 has a full RS-232 interface with handshake, while Port 4 has only Transmit, Receive and Ground. Port 4 will generally be used only when the 195M/H/C is pole mounted with remote power. To interface the 195M/H/C to the serial port on the computer, you will need serial cable (AA0621.1) with the following pin-out:

ESTeem Model 195M/H/C Port 3 (ESTeem Model AA0621.1 Cable)

RJ-45 Pin No.	Function	DB-9 Pin No.
1	Data Set Ready (DSR)	6
2	Data Carrier Detect (DCD)	1
3	Data Terminal Ready (DTR)	4
4	Signal Ground (GND)	5
5	Receive Data (RxD)	2
6	Transmit Data (TxD)	3
7	Clear to Sent (CTS)	8
8	Request to Sent (RTS)	7

RS-485 and RS-422 Data Ports (Ports 1 and 2)

The ESTeem Model 195M/H/C have a single, two-wire RS-485 interface in Port 1 and a single, four-wire RS-422 interface in Port 2. To ease access to these ports the AA066 (Figure 3) cable adapter is available. The RJ-45 interface can be inserted into either Port 1 (RS-485) or Port 2 (RS-422) and the corresponding signal lines (Figure 1) can be inserted in the screw terminals.

Note: Verify the screw terminal cover is attached to the cable before termination.



Figure 3: AA066 Cable Adapter

4/20mA Sensor Inputs (Port 1)

The ESTeem Model 195M/H/C have four independent 4/20mA inputs sensors that can be read through either ModbusTCP protocol (See Chapter 6) or through the “sread” software command from a serial port. For detailed information on scaling or modifications to sensor reading, please refer to Appendix A of the manual, or contact ESTeem customer support at 509-735-9092 if you still have questions.

Model Series 192 Integration

The ESTeem Model 195M and 195C were designed to be downward compatible with the legacy ESTeem Model 192 series of wireless modems. The Model 192 series had been in production since 1996 with several generational changes in the product lifespan. The manufacturing variations throughout this time require that a new ESTeem Model 195M/C be “trained” to communicate with an existing Model 192 network. This training process (described below) will allow the Model 195M/C to recognize any change in deviation in the older radios and adjust accordingly.

Technical Tip: The ESTeem Model 192 network **MUST** be configured for narrow band (12.5 kHz) operation before Model 195M/C integration.

If an ESTeem 195M/C is added to an existing Model 192 network, it is highly recommended the Model 195M/C is installed at a remote location and not the Master or Repeater location of the Model 192 network (Figure 1). If the 195M/C is required to be used as the Master or Repeater site, “train” the radio modem to one of the remote locations and then test all wireless links from that location.

The Model 195M/C configuration utility can be used to provide local signal strength (RSSI) information but cannot gather information from a Model 192 because the process uses ModbusTCP protocol only available in the 195M/C. The ESTeem Model 192 configuration utility’s diagnostic can be used to test the operation of the wireless network but must be run from the Model 192 side of the wireless network. For example in Figure 1, the diagnostic utility (Polling Test) must be run from the Master SCADA location.

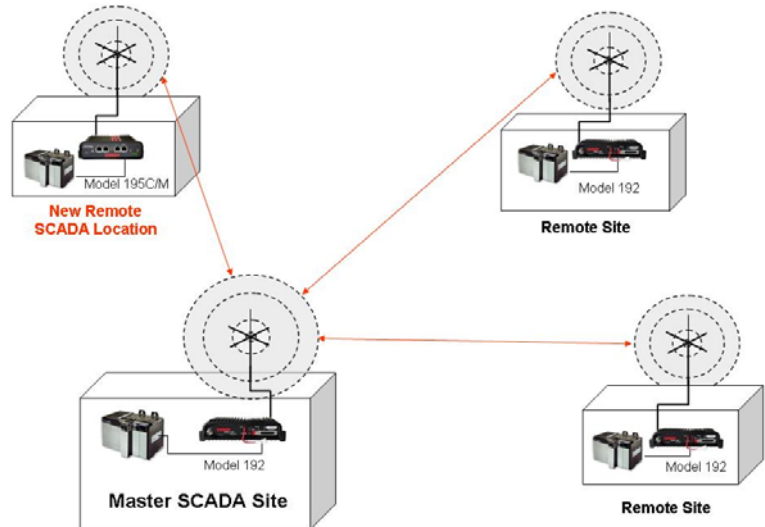


Figure 1: Model 192 Integration Diagram

Configuring Model 195M/C for Model 192

The ESTeem Model 195C and 195M must be set to 192 compatibility mode to communicate with an ESTeem Model 192. To configure for compatibility select the Model 192 Compatibility tab (Figure 4) and set 192 Compatibility to ON. This will set the software command (192compat on) for 192 compatibility.

The ESTeem Model 195C and 195M must then be “trained” to communicate with an ESTeem Model 192. First set the 192 compatibility to ON and press the *Set* button. Enter the remote address of the Model 192 and press the *Train to Remote* button. The Model 195M/C will begin training to the remote ESTeem and will save the configuration once complete (Figure 2). Verify the communication using the 195M/C Diagnostic utilities.



Figure 2: 192 Compatibility Screen

INFORMATION TO USERS

WARNING: This equipment has been tested and found to comply with the limits for a Class A digital device, pursuant to Part 15 of the FCC Rules. These limits are designed to provide reasonable protection against harmful interference when the equipment is operated in a commercial environment. This equipment generated, uses, and can radiate radio frequency energy and, if not installed and used in accordance with the instruction manual, may cause harmful interference to radio communications. Operation of this equipment in a residential area is likely to cause harmful interference in which case the user will be required to correct the interference at their expense.

To ensure compliance to FCC non-interference regulations, peripherals attached to this modem require shielded I/O cables.

If this equipment does cause interference to radio or television, which can be determined by turning the equipment off and on, the user is encouraged to try to correct the interference by one or more of the following measures:

1. Re-orient the radio/TV-receiving antenna.
2. Re-orient the modem antenna.
3. Relocate the modem with respect to the radio/TV-receiving antenna.
4. Plug the power supply for the modem into a different outlet so that the modem and radio/TV receiver are on different branch circuits.
5. Verify that the modem chassis is connected to an earth ground.
6. Attach a split bead (FAIR-RITE PN 2643164251) to the RS-232 cable.

If necessary, the user should consult the dealer or an experienced radio/TV technician for additional suggestions. The user may find the following booklet prepared by the FCC helpful.

"How to Identify and Resolve Radio-TV Interference Problems"

This booklet is available from the U.S. Government Printing Office, Washington, D.C. 20402 - Stock No. 004-000-00245-4. Application forms for the license are available from the nearest office of the FCC.

Electronic Systems Technology maintains a list of consultants that provide professional services at a reasonable cost to assist the users in licensing.

Max Power Density Calculation

(Numerical power gain divided by the spherical area around the separation distance)

$$Pd = (P * N) / (4 * \pi * D^2)$$

Example: The 195M has a maximum conducted output power close to 7 Watts. The highest gain antenna EST currently offers for use with this modem is specified with a gain factor of 8 dBd (10.15 dBi). Therefore, ignoring cable and connector losses, the maximum power density for the specified minimum safe separation distance of **170 cm** (uncontrolled environments):

$$Pd = (7000 * 10.351) / (4 * 3.14 * 170 * 170) = \mathbf{0.198 \text{ mW/cm}^2} = \mathbf{1.98 \text{ W/m}^2}$$

Please contact EST technical support if you need assistance with calculations for various power levels, antennas and minimum safe separation distances.

Terms

P = RF Power milliwatts

Gi = Antenna gain relative to isotropic = Gd + 2.15

Gd = Antenna gain relative to dipole = Gi - 2.15

N = Numerical gain of antenna

D = Distance in centimeters

Pd = Power density in mW/cm²

North American Power Density Limits**FCC Part 47 Section 1.1309 Limits (Controlled Environments / Occupational Exposure)**

150-220 MHz (195M & 195H) 1 mW/cm²

450 MHz (195C) 1.5 mW/cm²

FCC Part 47 Section 1.1309 Limits (General Population / Uncontrolled exposure)

150-220 MHz (195M & 195H) 0.2 mW/cm²

450 MHz (195C) 0.3 mW/cm²

Canadian Safety Code 6 Limits (Controlled Environments)

150-174 MHz (195M) 10 W/m²

450 MHz (195C) 15 W/m²

Canadian Safety Code 6 Limits (Uncontrolled Environments)

150-174 MHz (195M) 2 W/m²

450 MHz (195C) 3 W/m²

RF EXPOSURE WARNING: A minimum separation must be maintained between the user and nearby antenna at the following distances:

EXPOSITION RF AVERTISSEMENT: Un minimum de séparation doit être maintenue entre l'utilisateur et à proximité antenne aux distances suivantes:

Radio Model	Antenna Model/Gain	FCC Minimum Separation Distance Controlled Environment	Industry Canada Minimum Separation Distance Controlled Environment	FCC Minimum Separation Distance Uncontrolled Environment	Industry Canada Minimum Separation Distance Uncontrolled Environment
195C 9 Watts Max	AA19C (0 dBd)	35 cm	0.35 m	77 cm	0.77 m
195C 9 Watts Max	AA20C.1 (3.2 dBd)	50 cm	0.5 m	111 cm	1.11 m
195C 9 Watts Max	AA202C.1 (9 dBd)	97 cm	0.97 m	216 cm	2.16 m
195M 7 Watts Max	AA19M (0 dBd)	31 cm	0.31 m	68 cm	0.68 m
195M 7 Watts Max	AA20M (3.0 dBd)	43 cm	0.43 m	96 cm	0.96 m
195M 7 Watts Max	AA202M (8 dBd)	76 cm	0.76 m	170 cm	1.7 m
195H 2 Watts Max	AA19H (0 dBd)	17 cm	N/A	36 cm	N/A
195H 2 Watts Max	AA20H (3 dBd)	23 cm	N/A	50 cm	N/A
195H 2 Watts Max	AA202H (9 dBd)	46 cm	N/A	103 cm	N/A

Type Acceptance and RF Emissions Information

Model 195C

12.5 KHz Channel Spacing, 9,600-12,500 bps
FCC Type Acceptance No: ENPESTEEM195C
12.5 KHz Channel Emissions Designator: 8K59F1D
6.25 KHz Channel Emissions Designator: 4K37F1D

Industry Canada Type Acceptance: 2163A-192195C
12.5 KHz Channel Emissions Designator: 8K59F1DDN
6.25 KHz Channel Emissions Designator: 4K37F1DDN

Model 195M

12.5 KHz Channel Spacing, 9,600-12,500 bps
FCC Type Acceptance No: ENPESTEEM195M
12.5 KHz Channel Emissions Designator: 8K59F1D
6.25 KHz Channel Emissions Designator: 4K37F1D

Industry Canada Type Acceptance: 2163A-192195M
12.5 KHz Channel Emissions Designator: 8K59F1DDN
6.25 KHz Channel Emissions Designator: 4K37F1DDN

Model 195H

FCC Type Acceptance No: ENPESTEEM195H
50 KHz Channel Emissions Designator: 28K4F1D
25 KHz Channel Emissions Designator: 11K9F1D
12.5 KHz Channel Emissions Designator: 7K09F1D
6.25 KHz Channel Emissions Designator: 4K30F1D

FEDERAL COMMUNICATIONS COMMISSION FIELD OFFICES

ALASKA

1011 E. Tudor Rd.
Rm 240 Box 2955
Anchorage, AK 99510

CALIFORNIA

Interstate Office Park
4542 Ruffner St., Room 370
San Diego, CA 92111-2216

Los Angeles Office (LA)

Ceritos Corporate Tower
18000 Studebaker Rd., Room 660
Cerritos, CA 90701-3684

San Francisco Office (SF)

5653 Stoneridge Drive, Suite 105
Pleasanton, CA 94588-8543

COLORADO

Denver Office (DV)
215 S. Wadsworth Blvd., Suite 303
Lakewood, CO 80226-1544

FLORIDA

919 Federal Bldg
51 SE First Ave.
Miami, FL 33130

Tampa Office (TP)

2203 N. Lois Ave., Room 1215
Tampa, FL 33607-2356

GEORGIA

Atlanta Office (AT)
3575 Koger Blvd., Suite 320
Duluth, GA 30096-4958

HAWAII

7304 Prince Kuhi
Federal Building
Honolulu, HI

ILLINOIS

Chicago Office (CG)
Park Ridge Office Ctr., Room 306
1550 Northwest Highway
Park Ridge, IL 60068-1460

LOUISIANA

New Orleans Office (OR)
2424 Edenborn Ave. Suite 460
Metairie, LA 70001

MARYLAND

1017 Geo. Fallon
Building 31
Hopkins Plaza
Baltimore, MD

MASSACHUSETTS

Boston Office (BS)
1 Batterymarch Park
Quincy, MA 02169-7495

MICHIGAN

Detroit Office (DT)
24897 Hathaway Street
Farmington Hills, MI 48335-1552

MINNESOTA

691 Federal Building
316 N Robert St.
St. Paul, MN

MISSOURI

Kansas City Office (KC)
520 NE Colbern Road
Second Floor
Lee's Summit, MO 64086

NEW YORK

1307 Federal Building
111 W. Huron
Buffalo, NY 14202

NEW YORK

New York Office (NY)
201 Varick Street, Suite 1151
New York, NY 10014-4870

OREGON

1782 Federal Building
1220 SW 3rd Avenue
Portland, OR 97204

PENNSYLVANIA

Philadelphia Office (PA)
One Oxford Valley Office Bld.
Room 404
2300 E. Lincoln Hwy
Langhorne, PA 19047-1859

PUERTO RICO

747 Federal Building
Carlo Chardon Ave.
Hato Rey, PR 00918

TEXAS

Dallas Office (DL)
9330 LBJ Freeway, Room 1170
Dallas, TX 75243-3429

5636 Federal Building
515 Rusk Avenue
Houston, TX 77002

WASHINGTON DC

Columbia Office (CF)
9300 East Hampton Drive
Capitol Heights, MD 20743

WASHINGTON

Seattle Office (ST)
11410 NE 122nd Way
Room 312
Kirkland, WA 98034-6927

Overview

The ESTeem Models 195M, 195H and 195C support multiple security settings and an over-the-air, wireless encryption at 128-bit AES. All network security must be multi-layered as one level of security is never enough to make sure that data does not end up in the wrong hands. Please review the following security levels and decide what is the most appropriate for your network. The ESTeem 195M/H/C has incorporated the following security measures:

AES-CCMP (128-bit)

AES-CCMP (Advanced Encryption Standard-Counter Mode CBC-MAC Protocol) is the encryption algorithm used in the IEEE 802.11i and WPA-2 security protocols. This national encryption standard uses a 128 bit-AES block cipher and CCMP technique to ensure the highest level of security and integrity available on a wireless network. AES-CCMP incorporates two sophisticated cryptographic techniques (counter mode and CBC-MAC) and adapts them to Ethernet frames to provide a robust security protocol between the mobile client and the access point. AES itself is a very strong cipher, but counter mode makes it difficult for an eavesdropper to spot patterns, and the CBC-MAC message integrity method ensures that messages have not been tampered with.

encryption (on/off) - This software command will enable an over-the-air, wireless encryption at 128-bit AES. All ESTeem 195M/H/C in the same wireless network must have the same encryption settings and keys.

passp <Passphrase> - This software command will use the characters in the Passphrase to generate the AES encryption key. The key is generated from 1-64 characters entered after the passp command (example: passp 12345678) and is case sensitive. Typing the passp command without any arguments will display the current Passphrase.

ESTeem 195C Specifications	
Transmitter/Receiver	
Frequency of Operation (Software Selectable)	440 to 470 Mhz (6.25Khz / 12.5 Khz Channel Spacing)
Frequency Stability, -30C to +60C	+/- 2.5ppm
RF Data Rate Vs. Channel Spacing	(4.8Kbps @ 6.25Khz) and (12.5Kbps @ 12.5KHz)
Tx Output Power (Software Adjustable)	0.5 to 4 Watts
Tx Output Impedance	50 ohms
Rx Sensitivity	-110 dBm
Rx Adjacent Channel Rejection	> 55 dB
Modulation	4-Level GFSK
Forward Error Correction	TCM, Coding Rate 3/4
Data Error Detection	32-Bit Cyclic Redundancy Check
FCC ID (USA)/Industry Canada Type Acceptance	ENPESTEEM195C / 2163 192 195C
LED Indicators	Power (48VDC, 12V-Aux), Status Multi-Color LED (Tx, Rx, Rx-Valid, Rx-Error), RS-232 , RS-485, RS-422 Tx/Rx
Data Packet Information	
Radio Addressing	1-254 Total Units, Digi-repeating allows up to 3 repeaters between end-points
Data Packet Size	1-2000 Bytes
Serial Data Interface Buffer Size	8Kbytes Tx / 8Kbytes Rx
Power Requirements	
Receive / Without Ethernet Link	120 ma @ 12 VDC
Receive / With Ethernet Link	160 ma @ 12 VDC
Transmit @ 4 Watts RF Output	1540 ma @ 12 VDC
External DC Input Power	10.8 to 15 VDC
Ethernet Port (10/100)	RJ-45 Female
Serial Data Interfaces (RS-232, RS-422 & RS-485 selectable)	RJ-45 Female
Antenna Input/Output	TNC Female Connector
Protocols	
Serial Data Interface, Master PLC mode protocols supported repeater function	Allen Bradley DF1, Opto22, Modbus RTU/ASCII, and Transparent protocols
Ethernet Interface protocols supported for remote access via ARP proxy	ICMP Echo (ping), Modbus/TCP (Aux Voltage, 4-20mA readings, RSSI, MCU Core Temperature), Remote Configuration
Ethernet Interface protocols (direct access only)	Telnet, IP Configuration, Firmware upgrades
Mechanical / Environmental	
Temperature Range	-30° to +60° C
Humidity	95% Non-condensing
Dimensions	1.9 in. H x 6.7 in. W x 6.2 in. L
Weight	1.25 lbs.
Product Warranty	1 Year
Options	
Outdoor Pole Mount Kit	AA195PM
48 VDC Power Supply	AA175.3
RJ-45 To DB9 Serial Adaptor	AA0621.1
RJ-45 To Terminal Block Adaptor	AA066
Antennas/Surge Protectors/Cables, etc.	Contact factory for various options (market@esteem.com or 509-735-9092)
Security	AES-128

Antenna Specifications

Model No: AA19C
Antenna Type: Omni-Directional, ½ Wave
Applications: Mobile Mount.
Frequency: 450 to 470 MHz - AA19C
400 to 420 MHz - AA19F
Polarization: Vertical
Impedance: 50 ohms
Gain: 0 dBd
VSWR: < 2 to 1
Front To Back Ratio: n/a
Horizontal Beamwidth: n/a
Vertical Beamwidth: 60 degrees
Antenna Material: Rubber duck whip.
Mounting Hardware: Magnetic base.
Antenna Connector: TNC with 12 feet integral RG-58 cable.
Antenna Envelope: 16 in. length. Magnetic base 3.5 in. by 3 in by 1 in.
Weight: 1 lb. 5 oz.

Model No: AA20C.1
Antenna Type: Omni-Directional, DC grounded, Collinear 5/8 wave over 1/2 wave.
Applications: Fixed base or mobile mounting. L shaped mounting bracket may be removed for panel mounting. Ground plane radials may be removed depending on application.
Frequency: 450 to 470 MHz - AA20C.1
Polarization: Vertical
Impedance: 50 ohms
Gain: 3.2 dBd
VSWR: < 1.5
Front To Back Ratio: n/a
Horizontal Beamwidth: n/a
Vertical Beamwidth: 30 degrees
Antenna Material: Stainless steel whip and ground plane radials. All other hardware anodized metal.
Mounting Hardware: Stainless steel clamps for mounting to ¾ in. to 1 ½ in. pipe with right angle mount or direct mount.
Antenna Connector: N-Type Female
Antenna Envelope: 37 ½ in. length by 16 in width with ground plane radials.
Weight: 2 lbs.

Antenna Specifications

Model No:	AA202C.1
Antenna Type:	Directional, DC grounded, 5 element yagi.
Applications:	Fixed base.
Frequency:	440 to 470 MHz
Polarization:	Vertical or Horizontal
Impedance:	50 ohms
Gain:	9 dBd
VSWR:	< 1.5
Front To Back Ratio:	20 dB
Horizontal Beamwidth:	59 degrees
Vertical Beamwidth:	53 degrees
Antenna Material:	High strength aluminum with gold chromate finish.
Mounting Hardware:	Heavy duty U bolts for mounting up to 2 1/8 in. pipe with right angle mount or direct panel mount.
Antenna Connector:	N-Type Female
Maximum Power Input:	300 Watts
Antenna Envelope:	34.5 in. length by 13.25 in. width
Windload (RWV):	100 mph
Weight:	1.68 lbs.

ESTEem 195M Specifications	
Transmitter/Receiver	
Frequency of Operation (Software Selectable)	150 to 174 Mhz (6.25Khz / 12.5 Khz Channel Spacing)
Frequency Stability, -30C to +60C	+/- .38ppm
RF Data Rate Vs. Channel Spacing	(4.8Kbps @ 6.25Khz) and (12.5Kbps @ 12.5KHz)
Tx Output Power (Software Adjustable)	0.5 to 4 Watts
Tx Output Impedance	50 ohms
Rx Sensitivity	-110 dBm
Rx Adjacent Channel Rejection	> 55 dB
Modulation	4-Level GFSK
Forward Error Correction	TCM, Coding Rate 3/4
Data Error Detection	32-Bit Cyclic Redundancy Check
FCC ID (USA)/Industry Canada Type Acceptance	ENPESTEEM195M / 2163 192 195M
LED Indicators	Power (48VDC, 12V-Aux), Status Multi-Color LED (Tx, Rx, Rx-Valid, Rx-Error), RS-232 , RS-485, RS-422 Tx/Rx
Data Packet Information	
Radio Addressing	1-254 Total Units, Digi-repeating allows up to 3 repeaters between end-points
Data Packet Size	1-2000 Bytes
Serial Data Interface Buffer Size	8K bytes Tx / 8K bytes Rx
Power Requirements	
Receive / Without Ethernet Link	120 ma @ 12 VDC
Receive / With Ethernet Link	160 ma @ 12 VDC
Transmit @ 4 Watts RF Output	1540 ma @ 12 VDC
External DC Input Power	10.8 to 15 VDC
Ethernet Port (10/100)	RJ-45 Female
Serial Data Interfaces (RS-232, RS-422 & RS-485 selectable)	RJ-45 Female
Antenna Input/Output	TNC Female Connector
Protocols	
Serial Data Interface, Master PLC mode protocols supported repeater function	Allen Bradley DF1, Opto22, Modbus RTU/ASCII, and Transparent protocols
Ethernet Interface protocols supported for remote access via ARP proxy	ICMP Echo (ping), Modbus/TCP (Aux Voltage, 4-20mA readings, RSSI, MCU Core Temperature), Remote Configuration
Ethernet Interface protocols (direct access only)	Telnet, IP Configuration, Firmware upgrades
Mechanical / Environmental	
Temperature Range	-30° to +60° C
Humidity	95% Non-condensing
Dimensions	1.9 in. H x 6.7 in. W x 6.2 in. L
Weight	1.25 lbs.
Product Warranty	1 Year
Options	
Outdoor Pole Mount Kit	AA195PM
48 VDC Power Supply	AA175.3
RJ-45 To DB9 Serial Adaptor	AA0621.1
RJ-45 To Terminal Block Adaptor	AA066
Antennas/Surge Protectors/Cables, etc.	Contact factory for various options (market@esteem.com or 509-735-9092)
Security	AES-128

Antenna Specifications

Model No: AA19M
Antenna Type: Omni-Directional, $\frac{1}{2}$ Wave over $\frac{1}{4}$ Wave
Applications: Mobile Mount.
Frequency: 150-174 MHz
Polarization: Vertical
Impedance: 50 ohms
Gain: 0 dBd
VSWR: < 1.5 to 1
Front To Back Ratio: n/a
Horizontal Beamwidth: n/a
Vertical Beamwidth: 60 degrees
Antenna Material: Rubber duck whip.
Mounting Hardware: Magnetic base.
Antenna Connector: TNC with 12 feet integral RG-58 cable.
Antenna Envelope: 11 in. length. Magnetic base 3.5 in. by 3 in by 1 in.
Weight: 1 lb. 5 oz.

Model No: AA20M
Antenna Type: Omni-Directional, DC grounded, Collinear 5/8 wave
Applications: Fixed base or mobile mounting. L shaped mounting bracket may be removed for panel mounting. Ground plane radials may be removed depending on application.
Frequency: 150 to 175 MHz
Polarization: Vertical
Impedance: 50 ohms
Gain: 3.0 dBd with ground plane radials
VSWR: < 1.5
Front To Back Ratio: n/a
Horizontal Beamwidth: n/a
Vertical Beamwidth: 60 degrees
Antenna Material: Stainless steel whip and ground plane radials. All other hardware anodized metal.
Mounting Hardware: Stainless steel clamps for mounting to $\frac{3}{4}$ in. to 1.5 in. pipe with right angle mount or direct mount.
Antenna Connector: UHF Female (SO-239)
Antenna Envelope: 61 in. length by 43.5 in. width with ground plane radials
Weight: 2 lbs.

Antenna Specifications

Model No:	AA202M
Antenna Type:	Directional, 6 element yagi.
Applications:	Fixed base mounting.
Frequency:	150 to 174 MHz
Polarization:	Vertical or Horizontal
Impedance:	50 ohms
Gain:	8 dBd
VSWR:	< 1.2:1
Front To Back Ratio:	12-18 dB
Horizontal Beamwidth:	80 degrees
Vertical Beamwidth:	58 degrees
Antenna Material:	.250" – 6061-T6 Aluminum
Mounting Hardware:	Heavy duty U bolts for mounting up to 2 1/8 in. pipe with right angle mount or direct panel mount.
Antenna Connector:	N-Type Female
Maximum Power Input:	150 Watts
Antenna Envelope:	61 in. length by 41 in. width
Wind Surface Area (sqr. ft)	0.82
Windload (RWV):	100 mph
Weight:	5 lbs.

ESTeem 195H Specifications	
Transmitter/Receiver	
Frequency of Operation (Software Selectable)	217 to 220 Mhz (6.25Khz, 12.5 KHz, 25 KHz and 50 KHz Channel Spacing)
Frequency Stability, -30C to +60C	+/- 0.415 ppm
RF Data Rates Vs. Channel Spacing	(4.8Kbps @ 6.25KHz), (12.5Kbps @ 12.5KHz), (25Kbps @ 25KHz), and (50Kbps @ 50KHz)
Tx Output Power (Software Adjustable)	1 or 2 Watts
Tx Output Impedance	50 ohms
Rx Sensitivity	(-114 dBm @ 6.25KHz), (-111 dBm @ 12.5KHz), (-108 dBm @ 25KHz), and (-105 dBm @ 50KHz)
Rx Adjacent Channel Rejection	> 55 dB
Modulation	4-Level GFSK
Forward Error Correction	TCM, Coding Rate 3/4
Data Error Detection	32-Bit Cyclic Redundancy Check
FCC ID	ENPESTEEM195H
LED Indicators	Power (48VDC, 12V-Aux), Status Multi-Color LED (Tx, Rx, Rx-Valid, Rx-Error), RS-232 , RS-485, RS-422 Tx/Rx
Data Packet Information	
Radio Addressing	1-254 Total Units, Digi-repeating allows up to 3 repeaters between end-points
Data Packet Size	1-2000 Bytes
Serial Data Interface Buffer Size	8K bytes Tx / 8K bytes Rx
Power Requirements	
Receive / Without Ethernet Link	120 ma @ 12 VDC
Receive / With Ethernet Link	160 ma @ 12 VDC
Transmit @ 2 Watts RF Output	1350 ma @ 12 VDC
External DC Input Power	10.8 to 15 VDC
Ethernet Port (10/100)	RJ-45 Female
Serial Data Interfaces (RS-232, RS-422 & RS-485 selectable)	RJ-45 Female
Antenna Input/Output	TNC Female Connector
Protocols	
Serial Data Interface, Master PLC mode protocols supported repeater function	Allen Bradley DF1, Opto22, Modbus RTU/ASCII, and Transparent protocols
Ethernet Interface protocols supported for remote access via ARP proxy	ICMP Echo (ping), Modbus/TCP (Aux Voltage, 4-20mA readings, RSSI, MCU Core Temperature), Remote Configuration
Ethernet Interface protocols (direct access only)	Telnet, IP Configuration, Firmware upgrades
Mechanical / Environmental	
Temperature Range	-30° to +60° C
Humidity	95% Non-condensing
Dimensions	1.9 in. H x 6.7 in. W x 6.2 in. L
Weight	1.25 lbs.
Product Warranty	1 Year
Options	
Outdoor Pole Mount Kit	AA195PM
48 VDC Power Supply	AA175.3
RJ-45 To DB9 Serial Adaptor	AA0621.1
RJ-45 To Terminal Block Adaptor	AA066
Antennas/Surge Protectors/Cables, etc.	Contact factory for various options (market@esteem.com or 509-735-9092)
Security	AES-128

Antenna Specifications

Model No:	AA20H
Antenna Type:	Omni-Directional, $\frac{1}{4}$ Wave
Applications:	Base or Repeater Locations
Frequency:	217-220 MHz
Polarization:	Vertical
Impedance:	50 ohms
Gain:	3.0 dBd with ground radials
VSWR:	< 1.5 to 1
Front To Back Ratio:	n/a
Horizontal Beamwidth:	n/a
Vertical Beamwidth:	40 degrees
Antenna Material:	Stainless steel whip and ground plane radials
Mounting Hardware:	Stainless steel clamps for pipe mount
Antenna Connector:	UHF Female (SO-239)
Antenna Envelope:	43 in. length with 43 in. width with ground plane radials.
Weight:	2 lbs.

Model No:	AA202H
Antenna Type:	Directional, 6 element yagi.
Applications:	Fixed base mounting.
Frequency:	215-225 MHz
Polarization:	Vertical or Horizontal
Impedance:	50 ohms
Gain:	9 dBd
VSWR:	< 1.2:1
Horizontal Beamwidth:	66 degrees
Vertical Beamwidth:	52 degrees
Antenna Material:	.250" – 6061-T6 Aluminum
Mounting Hardware:	Heavy duty U bolts for mounting up to 2 1/8 in. pipe with right angle mount or direct panel mount.
Antenna Connector:	N-Type Female
Maximum Power Input:	150 Watts
Antenna Envelope:	54 in. length by 27 in. width
Wind Surface Area (sqr. ft)	0.82
Windload (RWV):	100 mph
Weight:	5 lbs.

Antenna Specifications

Model No:	TS327775
Antenna Type:	Omni-Directional, Heavy Duty Fiberglass
Applications:	Fixed base or Repeater Locations
Frequency:	217-222 MHz
Polarization:	Vertical
Impedance:	50 ohms
Gain:	5.0 dBd
VSWR:	< 2.0
Front To Back Ratio:	n/a
Horizontal Beamwidth:	n/a
Vertical Beamwidth:	18 degrees
Antenna Material:	Heavy duty fiberglass radome with a thick walled 6061-T6 aluminum mounting base.
Mounting Hardware:	Hard coat anodized mounting base with galvanized mounting hardware.
Antenna Connector:	N-Female Bulkhead
Antenna Envelope:	151 in. length by 5 in. width
Weight:	12 lbs.