

AVRASYA SOLAR

COMPLETE ENERGY SOLUTION
FOR A BETTER TOMORROW

COMPLETE ENERGY SOLUTIONS FOR A BETTER TOMORROW

www.avrasyaexport.com

Turn-key EPC Solutions



OUR HISTORY



2013

Roof and land SPP installation was carried out.



2017

Became an investor.



2024

Energy storage and supply license was obtained.

2013

Avrasya Solar Established



2014

Quality certificates have been received.



2023

The first Energy Village project was completed.



2012

The first domestic and national solar panel production



13 years with
SUN

www.avrasyaexport.com

Turn-key EPC Solutions

Our Expertise

Turn-key EPC Solutions



Market Research and Analysis



Land Acquisition and Permits



Technical Assessment



Financial Analysis



Engineering and Design



Construction, Installation and Maintenance

Avrasya Solar is a leading EPC company with more than 750 MW of completed installations. We employ over 50 full-time staff members and collaborate with more than 300 professionals across our wider ecosystem. For over a decade, we have partnered with the world's leading manufacturers of solar panels, inverters, and other key components. Throughout this period, we have successfully delivered numerous projects in cooperation with various EPC partners.

AREA

Energy
Economy
Environment
Society
Technology
Diplomacy

KEY BENEFITS

Clean & reliable energy supply
Jobs, investment, cost savings
CO2 reduction, climate action
Access to energy, education, health
Skills, innovation, capacity growth
Regional energy cooperation

www.avrasyaexport.com

Turn-key EPC Solutions

Some References 1/4

SASA 46 MW Project



AKAL 15MW Project



Some References 2/4

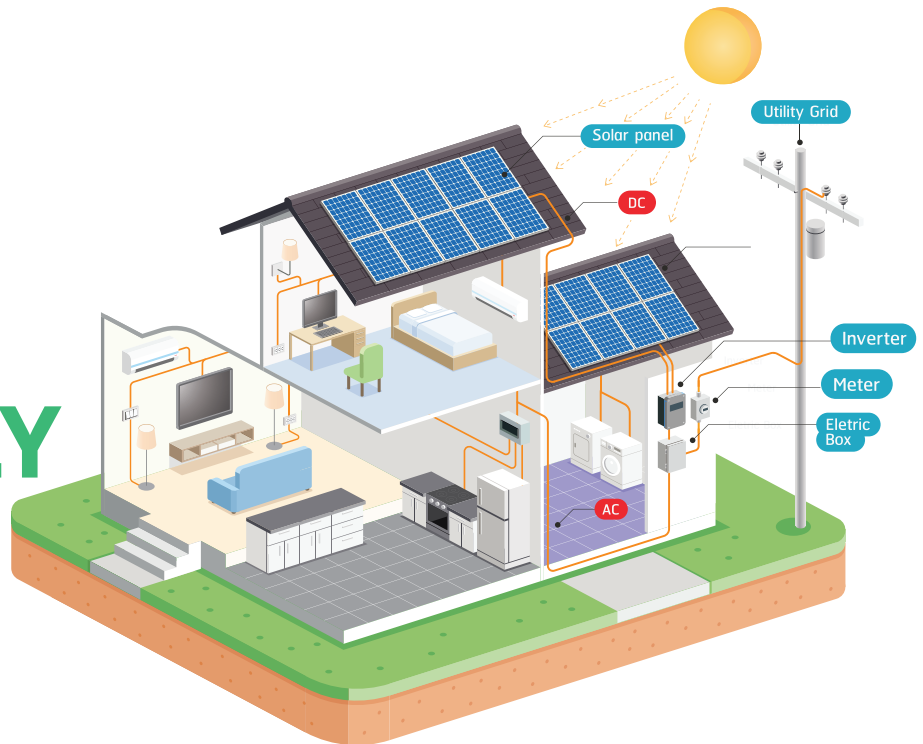


SOLAR SYSTEMS

Solar energy is energy derived from sunlight. Whether you realise it or not, the sun already powers our planet, providing the necessary energy to keep the Earth's ecosystem alive and thriving. The amount of sunlight that reaches the earth's atmosphere is enough to power all our needs.

173000 terawatts of solar energy strike the earth continuously, which is more than 10000 times the world's total energy use. The sun is a free, sustainable, clean resource we can utilize in place of conventional electricity to power our day-to-day lives. Solar energy can be used to provide heat, light, and other electricity-dependent needs in residential and commercial buildings.

HOW DO SOLAR PANELS ACTUALLY WORK?



Solar panels are made of highly excitable, conductive materials. When the sun's rays hit the solar panels, the reaction creates direct current (DC) electricity. Do they work even on overcast days? Absolutely, since the sun's rays can still penetrate clouds and reach solar panels.

Since most homes and businesses use alternating current (AC) electricity, your solar-generated DC energy will pass through an inverter to become AC electricity. This energy can be rationed into load for everyday essential appliance use, the rest stored into a battery, reverted back into a grid — entirely dependent on your choice and solar power system goals.

Solar panels enable humanity to maximise solar energy — a free, clean, energy resource. This is a major step in lowering carbon footprint and eventually achieving net-zero. Avrasya new Energy catalogue aims to promote clean energy access with energy supplies at the best prices, and contributing to economic growth by pushing for energy savings.



SOLAR SYSTEMS

WHY SOLAR ENERGY IS IMPORTANT?

There's a reason why so many homeowners and businesses are turning to solar power. The benefits are undeniable, and not just for individuals, but for the planet as a whole. Here are just a few of the many reasons that support the importance of solar energy.

IT'S GOOD FOR THE ENVIRONMENT

The difference between solar energy and conventional electricity is that solar energy does not rely on the use of fossil fuels, does not pollute air or water, and does not contribute to global warming, making it the preferable option for many. Solar energy works with the earth's natural resources, whereas conventional electricity depletes or harms them.

IT'S A RELIABLE, COST-EFFECTIVE ENERGY SOURCE

The sun is a renewable energy source. Fossil fuels will eventually run out, but sunlight won't. For that reason, solar energy is highly reliable. And unlike fossil fuels which are expensive to mine and utilize, it doesn't cost anything to receive sunlight. A one-time installation of solar equipment is all that's needed to reap the benefits.

IT SAVES YOU MONEY IN THE LONG RUN

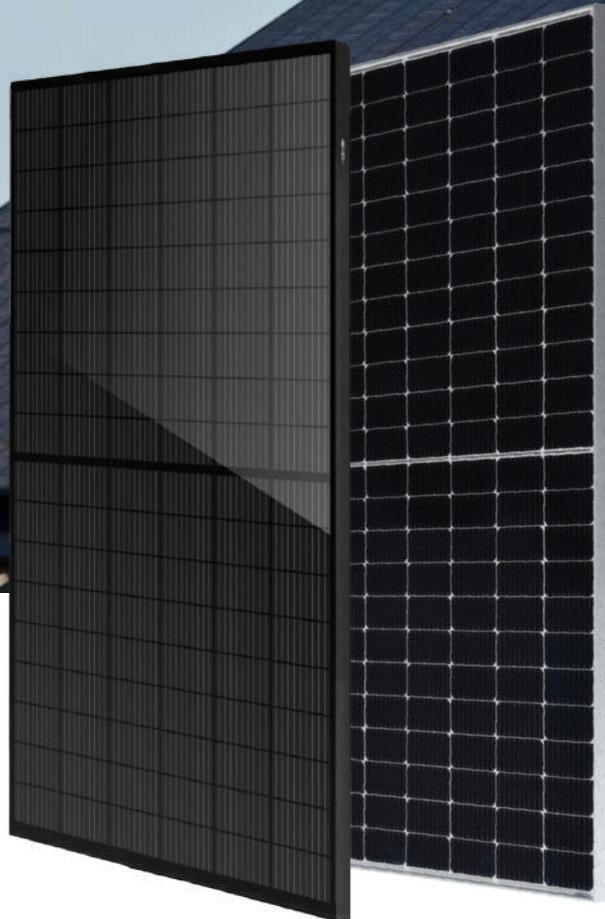
Though the cost of installing solar panels or a solar electric system has decreased in recent years, some may still find the initial investment in solar energy to be intimidating. However, the key is remembering that installation is a one-time event, whereas paying for conventional electricity is a frequent, ongoing, and an expensive obligation, especially as electric rates continue to rise.

IT PROMOTES ENERGY INDEPENDENCE

Energy independence means not having to rely on the power grid. With no other means of powering your home, you could run into a variety of issues in the event of bad weather or damage to power lines. Using solar energy, especially when paired with a backup battery system, allows you to not be tied to unreliable power grids when you need energy most.



Solar Panels



Solar Panels are engineered for a positive power tolerance, ensuring that they will always produce more power, equal to or greater than their rated power.

PID Resistance means our solar panels maintain their power efficiency despite high voltages, high temperatures, high humidity, and other potential factors. With advanced glass and cell surface textured design, excellent performance even during overcast days is possible.



HALF-CUT TECHNOLOGY

Unique circuit design to reduce temperature heat spots



SIGNIFICANTLY AVOIDING HEAT SPOT

The unique circuit design to reduce the temperature heat spot significant, so that to reduce the power loss and then increase the output of modules.



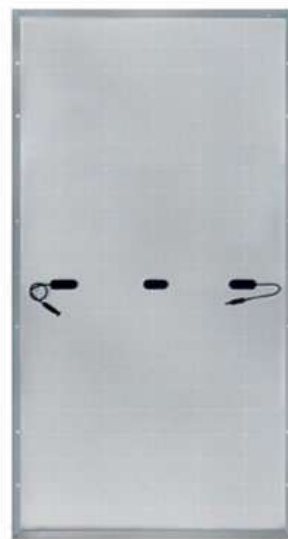
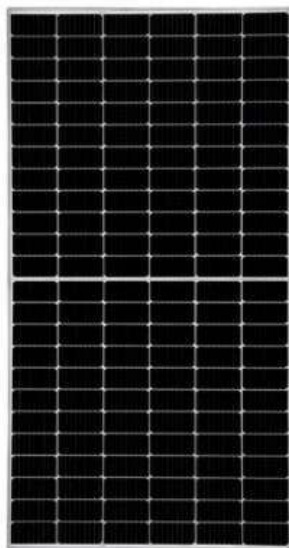
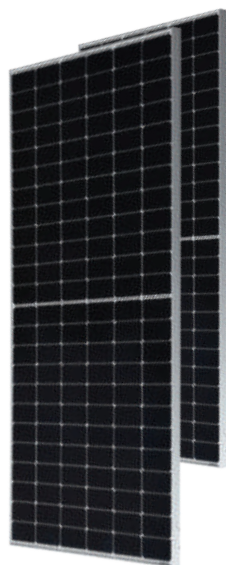
LOWER COST

Increasing power generation can reduce the cost per kilowatt-hour



EXCELLENT PERFORMANCE OF PID RESISTANCE

Solar Panels



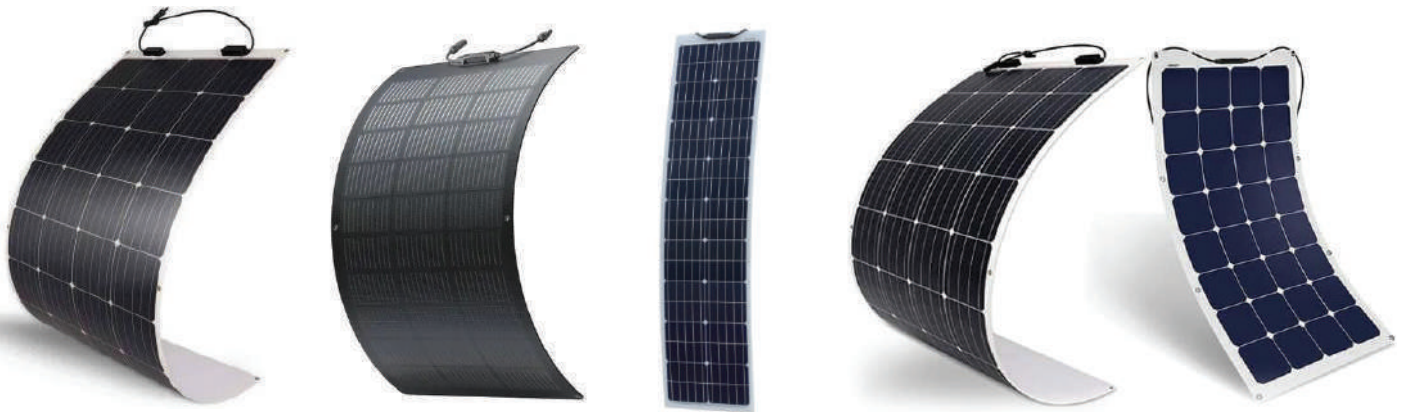
ELECTRICAL DATA (STC)

Model	SW650W-12BB	SW550W-10BB	SW455-460W-M6	SW400-415W-M6	SW375-380W-M6
Description of Solar Panels	650W Mono Halfcut	550W Mono Halfcut	455W Mono Halfcut	415W Mono Halfcut	380W Mono Halfcut
Peak Power(Pmax)	650W	550W	455W	415W	380W
Maximum Power Voltage(Vmp)	Vmp:42,39V	Vmp:38,42V	Vmp:38,47V	Vmp:38,64V	Vmp:35,32V
Maximum Power Current(Imp)	Imp:10,91A	Imp:10,65A	Imp:8,80A	Imp:10,74A	Imp:10,76A
Open Circuit Voltage(Voc)	Voc:52,62V	Voc:46,84V	Voc:46,59V	Voc:45,21V	Voc:45,21V
Short Circuit Current(Isc)	Isc:11,45A	Isc:11,33A	Isc:9,37A	Isc:11,23A	Isc:11,21A
Dimensions	L*W*H:2465*1134*35MM	L*W*H:2274*1134*35MM	L*W*H:2096*1039*35MM	L*W*H:1940*1040*35MM	L*W*H:1760*1039*35MM
Note	12BB	10BB	9BB	9BB	9BB

Model	SW340W-M6	SW340W-M3	SW230W-M6	SW205WHV-M6	SW205W-M6
Description of Solar Panels	340W Mono Halfcut	340W Mono	230W Mono Halfcut	205W Mono Halfcut	205W Mono Halfcut
Peak Power(Pmax)	340W	340W	230W	205W	205W
Maximum Power Voltage(Vmp)	Vmp:31,74V	Vmp:32,2V	Vmp:21,15V	Vmp:37,72V	Vmp:18,86V
Maximum Power Current(Imp)	Imp:10,71A	Imp:7,86A	Imp:10,87A	Imp:5,44A	Imp:10,87A
Open Circuit Voltage(Voc)	Voc:37,04V	Voc:38,6V	Voc:25,38V	Voc:45,20V	Voc:22,50V
Short Circuit Current(Isc)	Isc:11,21A	Isc:8,86A	Isc:11,47A	Isc:5,75A	Isc:11,47A
Dimensions	L*W*H:1590*1039*35MM	L*W*H:1684*1002*40MM	L*W*H:1590*705*30MM	L*W*H:1405*705*30MM	L*W*H:1405*705*30MM
Note	9BB	5BB	9BB	9BB	9BB

Model	SW205W-M3	SW155WHV-M6	SP340W-72P	SP280W-60P
Description of Solar Panels	205W Mono	155W Mono Halfcut	Poly Cell-72 Cells 340W	Poly Cell-60 Cells 280W
Peak Power(Pmax)	205W	155W		
Maximum Power Voltage(Vmp)	Vmp:20,7V	Vmp:28,50V		
Maximum Power Current(Imp)	Imp:9,90A	Imp:5,45A		
Open Circuit Voltage(Voc)	Voc:25,5V	Voc:31,00V		
Short Circuit Current(Isc)	Isc:9,85A	Isc:5,75A		
Dimensions	L*W*H:1490*675*30MM	L*W*H:1065*705*30MM		
Note	5BB	9BB		

Flexible Solar Panels



ELECTRICAL DATA (STC)

Model	SW205FX	SW205HVFX	SW175HV	SW155HV	SW135HV
Description Flexible SolarPanels	205W Mono Halfcut	205W Mono Halfcut	175W Mono Halfcut	155W Mono Halfcut	135W Mono Halfcut
Peak Power(Pmax)	205W	205W	175W	155W	135W
Maximum Power Voltage(Vmp)	Vmp:18,86V	Vmp:38,21V	Vmp:32,76A	Vmp:28,86V	Vmp:25,50V
Maximum Power Current(Imp)	Imp:10,87A	Imp:5,36A	Imp:5,34A	Imp:5,37A	Imp:5,43A
Open Circuit Voltage(Voc)	Voc:22,56V	Voc:43,20A	Voc:38,36V	Voc:32,88V	Voc:29,90V
Short Circuit Current(Isc)	Isc:11,21A	Isc:5,60A	Isc:5,60A	Isc:5,60A	Isc:5,60A
Dimensions	L*W*H:1440*710MM	L*W*H:1440*710MM	L*W*H:1270*710MM	L*W*H:1095*705MM	L*W*H:100*710MM
Note					

USAGE AREA



Solar Inverters

Solar Inverters are devices that convert the direct current (DC) from the solar panels into alternating current (AC) which is used by domestic and commercial appliances. It is one of the most critical components of the solar power system as it converts power from the sun into useful energy and is often referred to as the brain of a solar system. Solar inverters are a crucial part of a solar system since power from the sun cannot be directly used to run electrical appliances. Solar inverters have evolved to become much more smart and intelligent units, performing other functions such as data monitoring, advanced utility controls, energy management, and more.



Solar Inverters



High Voltage Off Grid Inverters



MPS-V III PRO Series Solar Inverter Off Grid Solar Inverter

Pure sine wave solar inverter (On/off grid) - Output power factor 1.0 - WIFI and GPRS available for iOS and Android - Inverter works without battery - One-click restore to Factory Settings - Built-in Lithium battery automatic activation - Built-in 120A(3.6KW/ for 6.2KW)/140A(for 4.2KW) - MPPT: Max 6200w (for 3.6kw/4.2kw), max6500w (for 6.2kw) solar charging - High PV input voltage range (90~500VDC) Challenging Built-in anti-twilight kit for ambient environments - Intelligent battery charging design to optimize battery life - Dual output(V2.0)



MPS-V Plus Series Hybrid Solar Pure Sine Wave Solar Inverter

Pure sine wave solar inverter - Output power factor 1.0 - WIFI and GPRS available for iOS and android - Inverter works without battery - Built-in 100A MPPT solar charger - High PV input voltage range(120~500VDC) - Built-in anti-twilight for harsh environments kit - Intelligent battery charging design to optimize battery life



Solar Inverter IP65 1KW-10KW Massive for Home

Pure sine wave solar inverter (On/off grid) - Output power factor 1.0 - WIFI and GPRS available for IOS and Android - Inverter works without battery - One-click restore to Factory Settings - Built-in Lithium battery automatic activation - Built-in 120A(- MPPT: Max 6200w (for 3.6kw/4.2kw), max6500w (for 6.2kw) solar charging - High PV input voltage range (90 ~500VDC) Built-in anti-twilight kit for harsh environments - Smart battery charging design to optimize battery life -Dual output(V2.0)

Solar Inverters



Low Voltage Off Grid Inverter

MPS Series Off-grid High Frequency Solar Inverter



Pure sine wave inverter - Built-in MPPT solar charge controller - selectable input voltage range for home appliances and personal computers. - Selectable charging current according to applications - Configurable AC/Solar input priority via LCD setting - Compatible with grid voltage or generator power - Automatic restart when AC recovery - Overload and short circuit protection - Intelligent battery charger design for optimized battery performance - Parallel operation for up to 6 units (30KVA) only - available for 5KVA

PS Plus Series 1-5K Off Grid Solar Inverter Pure Sine Wave Inverter



Pure sine wave inverter - Built-in PWM solar charge controller - Output power factor - Selectable input voltage range for home use - Selectable charging current according to applications - Configurable AC/Solar input priority via LCD setting - Compatible with grid voltage or generator power - AC automatic restart while recovering - Overload and short circuit protection - Intelligent battery charger design for optimized battery performance - Parallel operation of up to 6 units available for 5KVA - Cold start function

PS Series 1-5K Off Grid Solar Inverter Pure Sine Wave Inverter



Pure sine wave inverter - Built-in PWM solar charge controller - Selectable input voltage range for home use - Selectable charging current according to applications - Configurable AC/Solar input priority via LCD setting - Compatible with grid voltage or generator power - Automatic restart when AC recovers - Overload load and short circuit protection - Intelligent battery charger design for optimized battery performance - Parallel operation of up to 6 units available for 5KVA

Solar Inverters



DOMESTIC PRODUCTION INVERTERS



Model
Description of Inverter
Electrical Details

MW500W/12V
Full Sine Wave Inverter
500 watts 12 volts

MW1000W/12V
Full Sine Wave Inverter
1000 watt 12 volt

MW1500W/12V
Full Sine Wave Inverter
1500 watt 12 volt

MW1500W/24V
Full Sine Wave Inverter
1500 watt 24 volt



Model
Description of Inverter
Electrical Details

MW500WM/12V
Modified Sine Wave Inverter
500 watt 12 volt

MW1000WM/12V
Modified Sine Wave Inverter
1000 watt 12 volt

MW1500WM/12V
Modified Sine Wave Inverter
1500 watt 12 volt

MW1500WM/24V
Modified Sine Wave Inverter
1500 watt 24 volt



Model
Description of Inverter
Electrical Details

MW1000W/12V
Full Sine Wave Rechargeable
Inverter
inverter 1000 watts
charger 30 Amp



Model
Description
Electrical Details

MW30A/12V
BATTERY CHARGER
Input:220V AC
Output:12V DC
30A

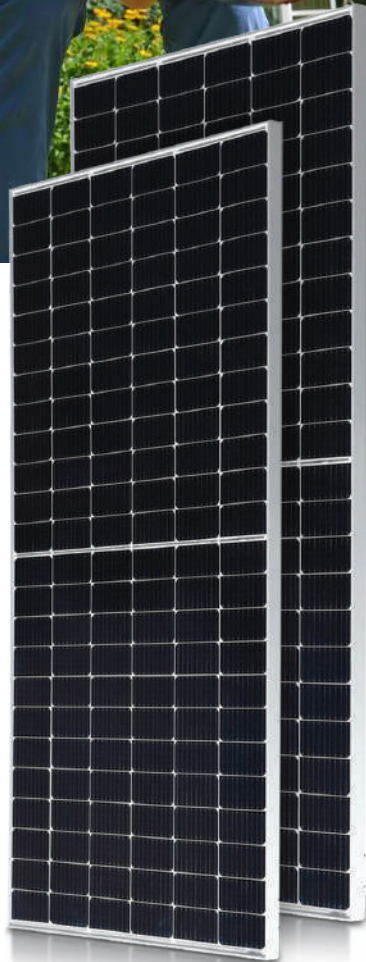


Model
Description
Electrical Details

ND1212-20
DC/DC CHARGER
20A 12V
20A

ND1212-30
DC/DC CHARGER
30A 12V
30A

Solar System



We are dedicated to helping you shift to clean energy — our solar system kits are designed so anyone can easily jumpstart their journey to having a sustainable, solar power system. On-grid and hybrid options are available, so you can either keep your local electric connection or live off-the-grid at your choice. Whether residential, commercial, or industrial, we offer complete solar systems to meet your power needs at your specifications.

Battery Solutions

Lithium Battery



Model	MW.LPO4.ABS-12V12Ah	MW.LPO4.ABS-12V18Ah	MW.LPO4.ABS-12V24Ah	MW.LPO4.ABS-12V50Ah	MW.LPO4.ABS-12V100Ah
Description	12V 12A LIFEP04 BATTERY	12V 18A LIFEP04 BATTERY	12V 24A LIFEP04 BATTERY	12V 50A LIFEP04 BATTERY	12V 100A LIFEP04 BATTERY
Electrical Details	without Bluetooth ABC BOX 12Ah (Ampere)	without Bluetooth ABC BOX 18Ah (Ampere)	without Bluetooth ABC BOX 24Ah (Ampere)	without Bluetooth ABC BOX 50Ah (Ampere)	without Bluetooth ABC BOX 100Ah (Ampere)
Model	MW.LPO4.ABS-12V150Ah	MW.LPO4.ABS-12V200Ah	MW.LPO4.ABS-12V200Ah	MW.LPO4.ABS-24V100Ah	MW.LPO4.ABS-24V150Ah
Description	12V 150A LIFEP04 BATTERY	12V 200A LIFEP04 BATTERY	12V 200A LIFEP04 BATTERY	24V 100A LIFEP04 BATTERY	24V 150A LIFEP04 BATTERY
Electrical Details	without Bluetooth ABC BOX 150Ah (Ampere)	without Bluetooth ABC BOX 200Ah (Ampere)	without Bluetooth METAL BOX 200Ah (Ampere)	without Bluetooth ABC BOX 100Ah (Ampere)	without Bluetooth METAL BOX 1500Ah (Ampere)
Model	MW.LPO4.ABS-24V200Ah	MW.LPO4.ABS-48V100Ah	MW.LPO4.ABS-48V150Ah	MW.LPO4.ABS-48V200Ah	
Description	24V 200A LIFEP04 BATTERY	48V 100A LIFEP04 BATTERY	48V 150A LIFEP04 BATTERY	48V 200A LIFEP04 BATTERY	
Electrical Details	without Bluetooth METAL BOX 200Ah (Ampere)	without Bluetooth METAL BOX 100Ah (Ampere)	without Bluetooth METAL BOX 150Ah (Ampere)	without Bluetooth METAL BOX 200Ah (Ampere)	
Model	MW.LPO4.ABS-12V100Ah	MW.LPO4.ABS-12V150Ah	MW.LPO4.ABS-12V200Ah	MW.LPO4.ABS-24V100Ah	MW.LPO4.ABS-24V200Ah
Description	12V 100A LIFEP04 BATTERY with Bluetooth	12V 150A LIFEP04 BATTERY with Bluetooth	12V 200A LIFEP04 BATTERY with Bluetooth	24V 100A LIFEP04 BATTERY with Bluetooth	24V 200A LIFEP04 BATTERY with Bluetooth
Electrical Details	ABC BOX 100Ah (Ampere)	ABC BOX 150Ah (Ampere)	ABC BOX 200Ah (Ampere)	ABC BOX 100Ah (Ampere)	ABC BOX 200Ah (Ampere)

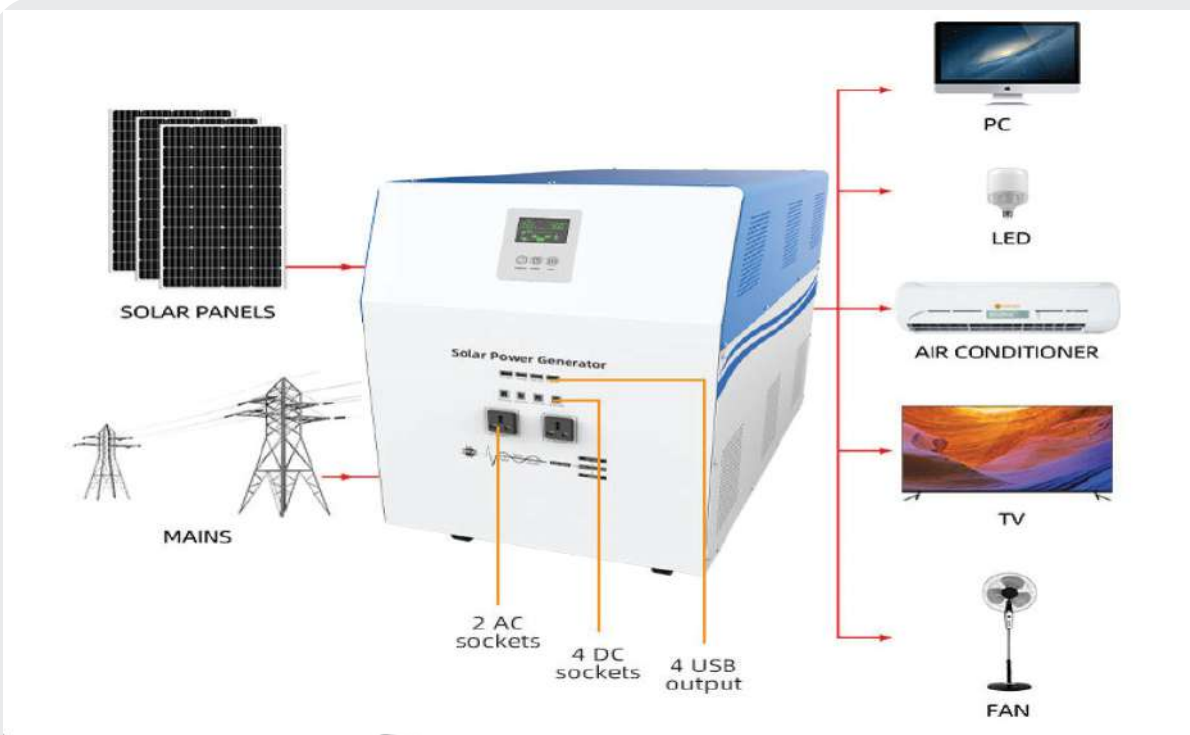
Gel Battery



Model	APEX100AHJ	APEX150AHJ	APEX200AHJ
Description	GEL BATTERY-China Orgin	GEL BATTERY-China Orgin	GEL BATTERY-China Orgin
Electrical Details	100Ah (Amper)	150Ah (Amper)	200Ah (Amper)

Solar Generators

SOLAR SYSTEM KITS



Model
Description

MW2000Wh12V
Solar Generator 1 KW

2 PCS 205W PANEL
1 PC 1000W/12V INVERTER
CONTAINS 1 PCS 150A GEL
BATTERY

MW3200Wh12V
Solar Generator 1.5 KW

3 PCS 205W PANEL
1 PC 1500W/12V INVERTER
CONTAINS 1 PCS 200A GEL
BATTERY

MW11000Wh24V
Solar Generator 3.5 KW
4 PCS 455W PANEL and
MOUNTING MATERIAL
1 PC 3500W/24V INVERTER
INCLUDES 1 PCS 24V 200A GEL
BATTERY

MW27500Wh48V
Solar Generator 5.5 KW
10 PCS 455W PANEL and
MOUNTING MATERIAL
1 PC 5500W/48V INVERTER
CONTAINS 1 PCS 48V 200A GEL
BATTERY

MW55000Wh48V
Solar Generator 10 KW
20 PCS 455W PANELS AND
MOUNTING MATERIALS
1 PC 10000W/48V INVERTER
CONTAINS 2 PCS 48V 200A GEL
BATTERIES

Electrical Details

Battery Storage Solutions



Having batteries in your solar power system gives you more energy self-sufficiency, and helps you achieve your ROI. We offer different types of safe, reliable battery solutions to meet power storage needs depending on a variety of factors — the solar array size, on-grid or off-grid system, backup power requirements, and overnight energy consumption in kWh. Our batteries are modular and scalable to easily build your target load with each usable capacity.

SOLAR STORAGE INVERTER

- Pure sine wave solar inverter (grid on/off)
- Output power factor 1.0
- WIFI/GPRS/Bluetooth available for IOS and Android
- Inverter can work without battery
- One-click restoration to factory settings
- Built-in 130A MPPT Solar charging: Maximum 8000W
- High PV input voltage range (120-450VDC)
- Intelligent battery charging design to optimize battery life



PV Solar Pump Inverters



1. Automatic MPPT tracking ability is more than 99%.
2. No need to set any parameters, according to the change of MPPT voltage automatic start and stop.
3. It can automatically stop the pump when the tank is full or automatically stop the pump when there is no water near the well.
4. Supports both single phase output and three phase output.
5. Operating voltage range: 250V-800V for 380V level and 180-800V for 220V level.
6. Supports input power from solar panels, mains electricity, generator.
7. It can be fed from Solar Energy and Mains electricity at the same time. When the electricity produced from solar energy is insufficient, it makes up for the deficit with grid electricity.

2.2 KW	3x220 V	PV-DRIVE	SOLAR	PUMP	DRIVE
4 KW	3x380 V	PV-DRIVE	SOLAR	PUMP	DRIVE
5.5 KW	3x380 V	PV-DRIVE	SOLAR	PUMP	DRIVE
7.5 KW	3x380 V	PV-DRIVE	SOLAR	PUMP	DRIVE
11 KW	3x380 V	PV-DRIVE	SOLAR	PUMP	DRIVE
15 KW	3x380 V	PV-DRIVE	SOLAR	PUMP	DRIVE
18.5 KW	3x380 V	PV-DRIVE	SOLAR	PUMP	DRIVE
22 KW	3x380 V	PV-DRIVE	SOLAR	PUMP	DRIVE
30 KW	3x380 V	PV-DRIVE	SOLAR	PUMP	DRIVE
37 KW	3x380 V	PV-DRIVE	SOLAR	PUMP	DRIVE
45 KW	3x380 V	PV-DRIVE	SOLAR	PUMP	DRIVE
55 KW	3x380 V	PV-DRIVE	SOLAR	PUMP	DRIVE
75 KW	3x380 V	PV-DRIVE	SOLAR	PUMP	DRIVE
93 KW	3x380 V	PV-DRIVE	SOLAR	PUMP	DRIVE



Solar Accessories

END CLAMP 35MM
SKU: 11388



MIDDLE CLAMP 35MM
SKU: 11389



SILVER RAIL
1.2 METER SKU: 11390
2 METERS SKU: 11538



ROOFTOP HOOK-01
SKU: 11391



L FEET GROUP
SKU: 11583



STEEL HORSE-SHAPED
KLIPLOCK01 SET
SKU: 11584



STEEL HORSE-SHAPED
KLIPLOCK02 SET
SKU: 11585



TT-NUT
SKU: 11392



SPLICE FOR RAIL
SKU: 11394



GROUNDING PLATE
SKU: 11395



ADJUSTABLE
FRONT LEG
SKU: 11417



ADJUSTABLE REAR LEG
(10°-15°) SKU: 11385
(15°-30°) SKU: 11386



PV CABLE
CONNECTOR-MC4
SKU: 11413



TRIANGLE
SUPPORT-1700
SKU: 11387



PV CABLE 100M
4 SQUARE - SKU: 11414 BLACK
4 SQUARE - SKU: 11418 RED
6 SQUARE - SKU: 11415 BLACK
6 SQUARE - SKU: 11419 RED



PV6 CABLE WITH MC4
CONNECTORS 2 END
FOR SOLAR PANEL
CONNECTION
1 METER SKU: 11570
2.5 METERS SKU: 11416



WIFI DONGLE
FOR INVERTERS
SKU 11528
SKU 11378



Turn-key EPC Solutions

Some References



www.avrasyaexport.com

Turn-key EPC Solutions

SASA - MERİNOŞ | ⚡ 71 MW |



SASA - MERİNOŞ | ⚡ 71 MW |



⚡ 44 MW
ŞİRECİ TEKSTİL
GAZİANTEP



Turn-key EPC Solutions

32.5 MW

KURT KUMAŞ

GAZİANTEP



27 MW

MELİKE TEKSTİL

GAZİANTEP



Turn-key EPC Solutions

27 MW

AYD GES

GAZİANTEP - 2017



24 MW

GÜRTEKS İPLİK

GAZİANTEP



22 MW
2025

Turn-key EPC Solutions

MİR YILDIZ 1 | ⚡ 7.8 MW | 📍 GAZİANTEP - 2023



MİR YILDIZ 2 | ⚡ 6.2 MW | 📍 GAZİANTEP - 2023



⚡ **18.3 MW**
ZEKİ MENSUCAT
📍 GAZİANTEP



10 MW
2022

Turn-key EPC Solutions

18.1 MW

HASIRCI TEKSTİL

GAZİANTEP



1.6 MW
2023



9.1 MW
2026



11 MW

ÖZKAPLAN CARPET

GAZİANTEP

5.5 MW
2019



5.5 MW
2023



Turn-key EPC Solutions

ZAFER TEKSTİL | ⚡ 7 MW | 📍 GAZİANTEP - 2022



ZAFER TEKSTİL | ⚡ 4 MW | 📍 GAZİANTEP - 2024



⚡ 9 MW

ÖZMEN UN

📍 GAZİANTEP - 2024

