



# AVRASYA CONSTRUCTION

Company Presentation

PROFESSIONAL SUCCESS  
IN THE CONSTRUCTION  
INDUSTRY



*Euphoria*<sup>®</sup>

[www.avrasyaexport.com](http://www.avrasyaexport.com)



## ABOUT US

---

AVRASYA is a trustable and reputable company which is located in Istanbul-Turkey. Our company was established to meet the needs of construction industry and wholesaler companies. We are active in production, trading, contracting and engineering for construction sector. AVRASYA helps fulfill the demand for civil engineering companies. Our company offers direct deliveries of infrastructure construction materials to our customers from our warehouses and customs zones of Turkey. We supply infrastructure construction materials as GRP pipes, Ductile iron pipes, Spiral welded pipes, Pumps, Valves etc. We are giving EPC service from consultation, feasibility study, basic and detailed design, procurement, construction, supervision, to test and commissioning in construction projects.

AVRASYA also provide services to all public and private institutions to make infrastructure and superstructure commitments.





## OUR MISSION

It is well known in the marketplace that buyer-supplier relationships can offer potential strategic advantages to both partners. However, less is known about how firms make the decision to work closely together to "expand the pie" of benefits.

AVRASYA – A company that wishes to become your successful partner through our world-class products and customer service. It is our mission to assist our customers to become winners in their own business field.

Our experienced team is dedicated to providing best quality products and convinced service to our clients.

## OUR VISION

The quality policy of Avrasya aims to maximize the development of the company towards the satisfaction of employees and business partners by providing the best products in accordance with the management principles and the long-term vision of the company's development . As a goal, we set ourselves:

Understanding customer needs and integrating them into our daily work - anticipating and exceeding their requirements.

Mutual development with suppliers and customers towards creating products with high added value (Self-reliance project)

Continuous improvement of our employees' qualifications and their motivation (Passionate & Engaged Team)

Continuous improvement of the effectiveness of the implemented quality management system towards achieving global goals.



# Euphoria<sup>®</sup>

## WHY AVRASYA GROUP?



**MODERN  
TECHNOLOGY**



**POWERFUL  
EQUIPMENT**



**QUALITY  
MATERIALS**



**PROFESSIONAL  
TEAM**



## OUR ACTIVITY AREAS

- ✓ INFRASTRUCTURE
- ✓ DRINKING WATER PROJECT
- ✓ AGRICULTURAL IRRIGATION
- ✓ WASTEWATER TREATMENT
- ✓ SUBSTATIONS
- ✓ UNDERPASS AND OVERPASS
- ✓ TRANSMISSION LINES
- ✓ HOUSING PROJECTS
- ✓ ENERGY FACILITIES
- ✓ INDUSTRIAL BUILDINGS
- ✓ MEDICAL BUILDINGS
- ✓ EDUCATION SERVICE BUILDINGS
- ✓ SHOPPING MALL BUILDINGS
- ✓ PARK CONSTRUCTION and LANDSCAPE WORKS



## OUR SERVICES



### Construction

We provide professional construction support to Public and Private Institutions.



### Building Materials

Wholesale and retail sales of building materials that meet the expectations of our customers.



### Machinery

We supply construction machinery from Turkish free zones and company warehouses to our customers .



### Projecting

Avrasya Group provides project support to its customers with its service quality and innovative structure.



### Engineering

We provide services in architectural design project applications with our expert and experienced architects.



### Turnkey Projects

We provide support in turnkey construction and renovation works with our expert team.



### Consultancy

We implement your projects with all its processes and provide consultancy services



### Renovation

We offer project support for renovation of Historical buildings, monuments, ruins and restoration.



# CIVIL ENGINEERING PROJECTS

---





GRP/FRP PIPE INSTALLATION

# ENGINEERING AND CONSULTANCY

Glass Reinforced Polyester / Fiberglass Reinforced Polyester  
Pipe Technology

Fiberglass pipe is a composite material system produced from glass fiber reinforcements, thermosetting plastic resins and additives. By selecting the right combination and amount of materials the designer can create a product to meet the most demanding requirements.

Still proper design and installation processes are crucial for the long lifetime of the GRP/FRP Pipes which is at least 50 years. In this regard, we are aiming to help our customers get the maximum performance from the product.



# Services

- GRP PIPE INSTALLATION
- GRE PIPE INSTALLATION
- GRP FITTINGS PRODUCTION
- GRE SPOOL PREFABRICATION
- GRP PIPE LAMINATION
- INDUSTRIAL PIPING
- GRP MANHOLE and TANK PRODUCTION
- VALVES, STEEL PIPE, DUCTILE IRON PIPE, HDPE PIPE
- CONSULTANCY OF PIPELINE SYSTEMS



## → GRE PIPE INSTALLATION

GRE pipe installation will be under control of our qualified and certified technicians according to the international standards.

## → GRE SPOOL PREFABRICATION

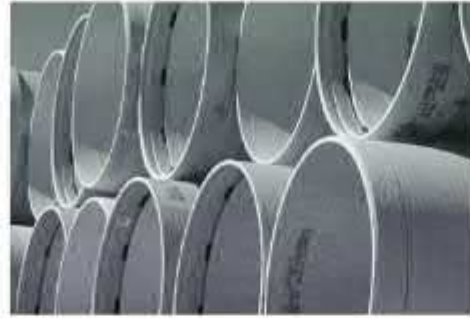
In our workshop, GRE spools are prefabricated in accordance with the project and isometric drawings.

## → GRP FITTING PRODUCTION

Elbow, Manhole, Tank, Tee Part, Reduction, Flange and Special Piece Production.



GRP/FRP Pipe Installation



GRP/FRP Pipe Supply



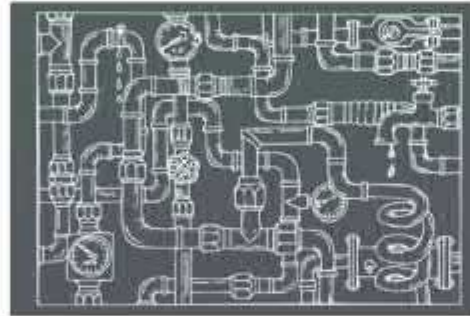
Pipeline Repairing and Rehabilitation



GRP/FRP Sub-Marine Applications



GRP/FRP Fitting Production



Hydraulic Calculations



GRP/FRP Tank and Manholes



Raw Materials Supply



GRP/FRP Lamination[Butt-Wrap]



GRP/FRP Pipeline Design



GRP/FRP Technical Consultancy



Jacking Pipe / Slip-Lining





## GRP and GRE Pipe Spool Prefabrication Fiberglass Pipe Spool Production

YYour solution partner for GRP and GRE  
Fiberglass Pipe applications with years of  
experience. Please contact us for any  
questions you may have.

[www.avrasyaexport.com](http://www.avrasyaexport.com)



### CONTACT

 [info@avrasyaexport.com](mailto:info@avrasyaexport.com)

 +90 532 244 18 31

 +90 212 503 00 02

 [www.avrasyaexport.com](http://www.avrasyaexport.com)

*Euphoria*

## Engineering Solutions in Fiberglass Pipe Technology



# WATER TREATMENT SYSTEMS



## WASTE WATER TREATMENT & RE-USE SYSTEMS

An alternative to the centralized way of wastewater treatment has begun to evolve nowadays: the application of on-site WWTs as a decentralized way of sewage treatment. These small-scale units have high priority in low population density areas, where the discharge of sewage to a central WWTP through a drainage system is not profitable. Constructing too long drainage conduits is not rational for two reasons: high costs and stagnant wastewater. The Council Directive 91/271/EEC concerning urban wastewater treatment states that where wastewater collection systems are not justified either by economic or environmental aspects, individual systems should be used





# WATER TREATMENT SYSTEMS



## ULTRAFILTRATION WATER TREATMENT SYSTEMS

Ultra filtration is a membrane separation process in which a porous membrane is used to separate or reject colloidal and suspended solids also with removing of bacteria and viruses with 0,02 micron filtration rate.

UF systems are used in:

- Municipalities
- Food and Beverage
- Military zones
- Pre treatment of RO
- Industrial zones
- Water recycling

# > Transformers

Tailor Made Products

## ODT

Oil Distribution Transformers

- From 100kVA to 3150kVA
- Up to 36 kV
- Conservator, free breathing, corrugated wall hermetic or gas cushion hermetic
- Corrugated or flat wall design



## sMPT

Small Power Transformers

- 3150 kVA to 10 MVA
- Up to 72.5 kV
- Special winding design
- Conservator, free breathing, sealed hermetic or gas cushion hermetic
- Corrugated wall up to 10MVA



## MPT

Medium Power Transformers

- Up to 135 MVA
- Up to 170 kV
- Breathing for all ranges
- Gas-cushion up to 30MVA
- Customs solutions & Smart Transformers



Mineral Oil as standard  
Natural Ester available  
Synthetic Ester available



Ex-proof Solution  
up to 135MVA & 170kV  
IECex or ATEX

ONAN, ONAF, OFAF, ODAF  
OFWF, ODWF options  
\*K replaces O for ester oil



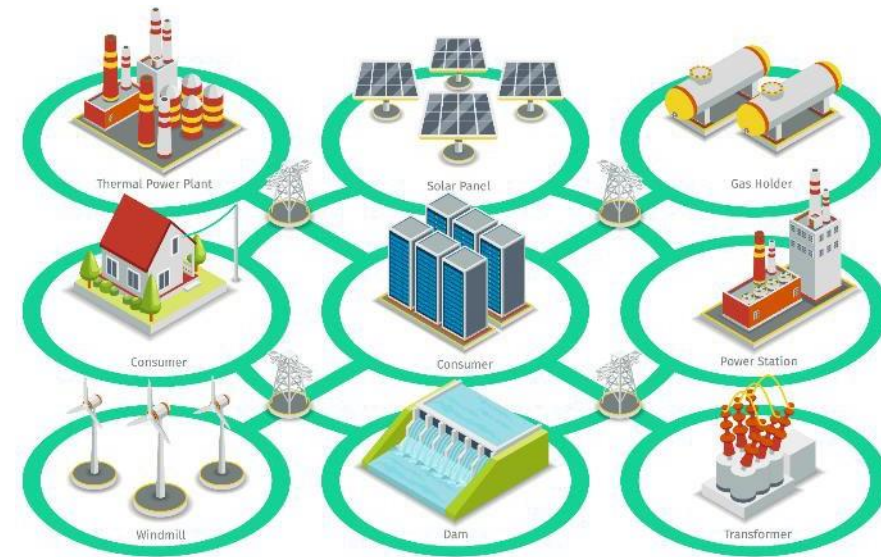


# > Special Solutions

## High Tech Products

### > Special Transformers:

- **Ex-proof:** Explosion-proof transformers acc.to ATEX or IEC-ex
- **Solaris:** Solar farm transformers
- **Nacela:** Wind turbine transformer w/ water cooling & ester-based oil
- **Rectiva:** Rectifier transformers
- Extra-small dimension w/ high-temp insulation & ester-based oil
- Traction transformer
- Current-limiting transformers
- Shunt reactors
- Mobile substation transformers
- Phase-shifting transformers



### Applications



### > Our Strengths

- Strong experience, high quality of standards and customized products with international, regional and national certifications
- Customer oriented approach with tailor-made offer for key markets and specific industrial applications
- Innovative Solutions such as High efficiency, low noise, compact & explosion proof Transformers

### > Our Commitments

- Design, Manufacture and Deliver transformers at the best cost, quality and delivery time

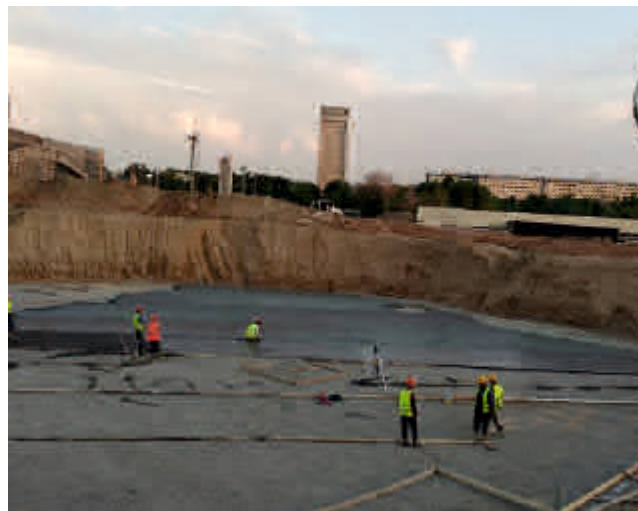
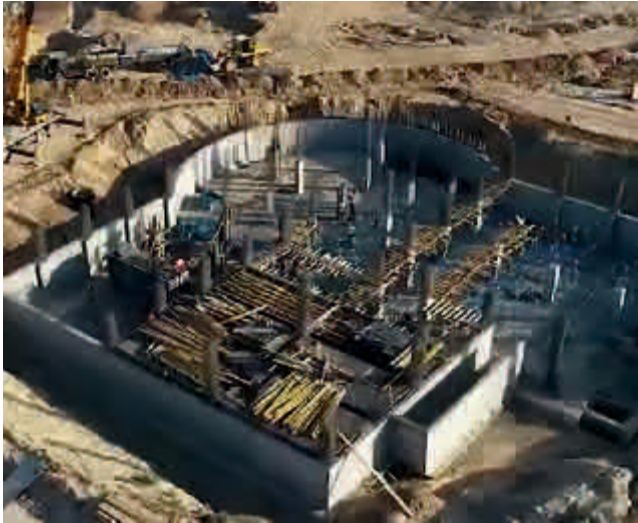


# Superstructure Construction

---



# Reinforced Concrete Manufacturing





# Reinforced Concrete Manufacturing





# Reinforced Concrete Manufacturing





# Concrete Road Works





# Industrial Buildings





# Substation Construction





*Euphoria*

FROM PRODUCTION TO ASSEMBLY  
ÜRETİMDEN MONTAJA\*

ORIGINAL ARCHITECTURE  
ÖZGÜN MİMARİ\*

HIGH SOUND AND HEAT INSULATION  
YÜKSEK SES VE ISI IZOLASYONU\*

EARTHQUAKE RESISTANT  
DEPREME KARŞI DAYANIKLI\*

**LIGHT STEEL STRUCTURES**  
HAFİF ÇELİK YAPILAR\*



# TABLE OF CONTENTS/ İÇİNDEKİLER\*

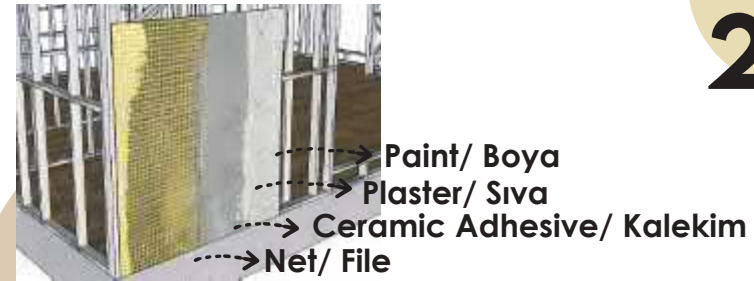
NUMBER OF PAGES/  
SAYFA SAYISI

01	TEOTECH
02-07	SYSTEM DETAIL/ SİSTEM DETAYI
08-11	EDUCATIONAL BUILDINGS/ EĞİTİM YAPILARI*
12-15	OFFICE BUILDINGS/ OFİS YAPILARI*
16-19	COMMERCIAL BUILDINGS/ TİCARİ YAPILAR*
20-22	HEALTH STRUCTURES/ SAĞLIK YAPILARI*
23-24	SOCIAL STRUCTURES/ SOSYAL YAPILAR*
25-27	TOURISM STRUCTURES/ TURİZM YAPILARI*
28-31	INDUSTRIAL BUILDINGS/ ENDÜSTRİYEL YAPILAR*
32-38	PUBLIC BUILDINGS/ KAMUSAL YAPILAR*
39-42	MULTIPLE PROJECTS/ ÇOKLU PROJELER*
43-50	SINGLE STOREY/ TEK KATLI*
51-61	TWO STOREY/ İKİ KATLI*
62-63	TRIANGLE HOUSE/ ÜÇGEN EV*
64-67	TINY HOUSE/ TEKERLEKLİ EV*
68-69	TEOCAD PROGRAM
70-73	INTERIOR DETAILS/ İÇ DETAYLAR*
74-77	STEEL IMAGES/ ÇELİK GÖRSELLERİ*
78-81	CONSTRUCTION SITE PHOTOS/ ŞANTIYE FOTOĞRAFLARI*

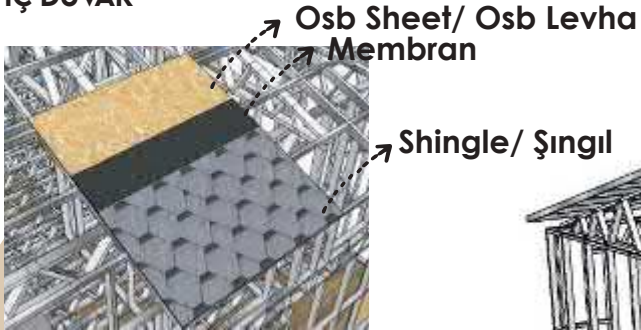




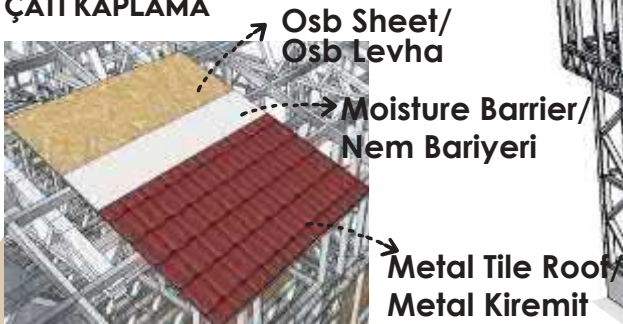
**INTERIOR WALL**  
İÇ DUVAR



**EXTERIOR WALL**  
DIŞ DUVAR



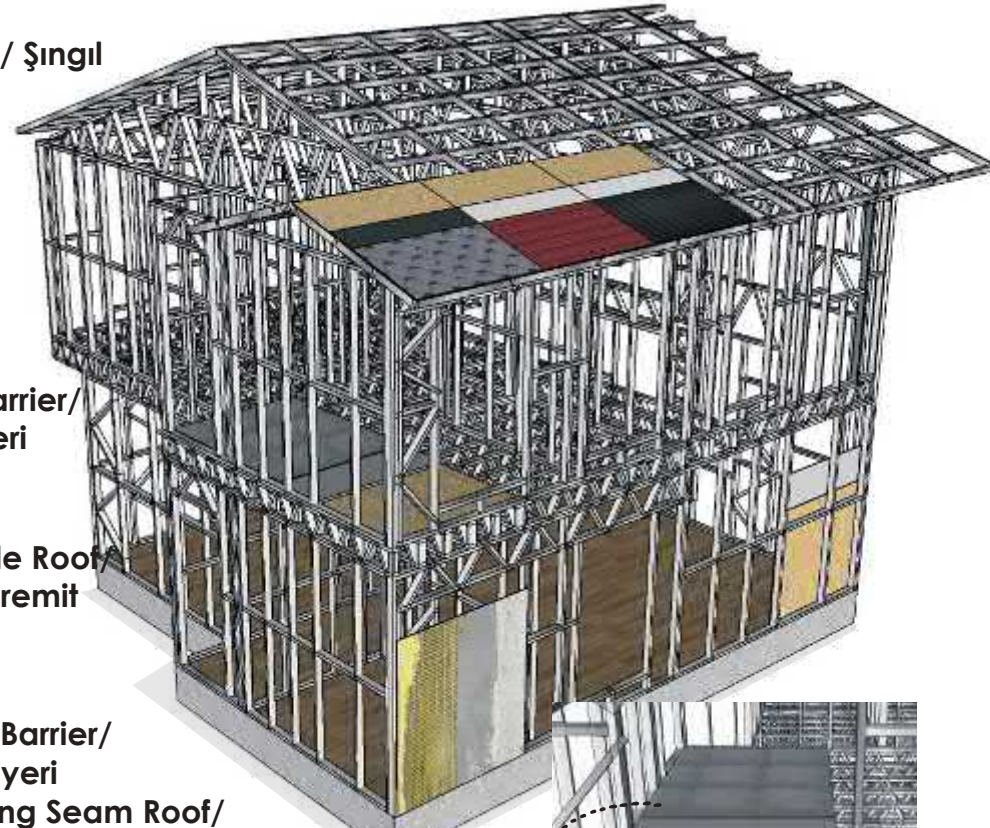
**ROOFING**  
ÇATI KAPLAMA



**ROOFING**  
ÇATI KAPLAMA



**ROOFING**  
ÇATI KAPLAMA



Floor Ceramics/ Seramik  
5 cm Screed Concrete/ 5 cm Şap Betonu  
Osb Sheet/ Osb Levha



**UNDERLAYMENT**  
ARAKAT DÖŞEME

# SYSTEM DETAIL

## SİSTEM DETAYI\*

3

**INTERIOR WALL DETAIL**  
İÇ DUVAR DETAYI\*



- Osb Sheet/ Osb Levha
- Drywall/Alçıpan
- Joint Filler/ Derz Dolgusu
- Joint Plaster/ Derz Alçısı
- 2 Layers of Satin Plaster/  
2 Kat Saten Alçı
- Emery/ Zımpara
- Paint/Boya

**INSULATION DETAIL**  
İZOLASYON DETAYI\*



- Mineral Rockwool/  
Mineral Taşyünü

**ELECTRICAL INSTALLATION DETAIL**  
ELEKTRİK TESİSAT DETAYI\*



- Electrical Installation/  
Elektrik Tesisatı
- 9 cm-14 cm

**EXTERIOR WALL DETAIL**  
DIŞ DUVAR DETAYI\*



- Moisture Barrier/  
Nem Bariyeri
- Fibercemet  
Net/ File
- Ceramic Adhesive/  
Kalekim
- Plaster/ Sıva
- Paint/ Boya



# LIGHT STEEL STRUCTURAL ELEMENTS

## HAFİF ÇELİK YAPI ELEMANLARI\*

4

### HAFİF ÇELİK YAPI SİSTEMİ



Hafif Çelik Yapı Sistemi ; 90 mm-140mm. genişliğinde AISI ( American Iron and Steel Institute) ve ( DIN-EN 10326 ) Standartlarında Galvanizli Yapı Çeliği İç -Dış Duvar, Tavan, Çatı Panelleri, Çatı Makasları, Kiriş ve Parapetlerin, gereksinim duyulan diğer bina elemanlarıyla birlikte Mühendislik ve Mimari tasarımları yapılarak bilgisayar destekli Roll Form makinalarımızda fabrika sahasında ön üretimi gerçekleştirilmektedir.

### LIGHT STEEL CONSTRUCTION SYSTEM

Light Steel Construction System; 90mm-140mm. In AISI (American Iron and Steel Institute) and ( DIN-EN 10326) Standards, Galvanized Structural Steel Interior-Exterior Wall, Ceiling, Roof Panels, Roof Trusses, Beams and Parapets, together with other required building elements, Engineering and Architectural designs are made and computer-aided Pre-production is carried out at the factory site in our Roll Form machines.

### ÇATI KAPLAMA



Roll Form makinasında tasarlanan çatı panelleri, 90 mm genişliğindedir. Makas ve tavan panellerinin üzerine uygulanır ve bina çevresine 18 cm alın oluşturur. İstenildiği takdirde çatı kaplaması olarak; kenet çatı, metal kiremit, ondüline, sandviç panel veya trapez çatı kaplamaları da uygulanabilmektedir.

### ROOFING

Roof panels designed on the Roll Form machine are 90 mm framed. It is applied over the truss and ceiling panels and creates an 18 cm face around the building. As roof covering when requested; Seam roof, metal tile, corrugated, sandwich panel or trapezoidal roof coverings can also be applied.

## ELEKTRİK- SIHHi TESİSAT



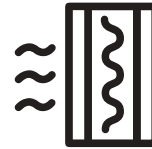
Temiz soğuk su tesisatı 1/2"PVC pprc borular ile sıva altı olarak yapınının 1 m. dışarısına çekilir.

Plastik kablo kanallarından SIVA ALTI çekilir, 2000 Watt, 220 Volt. Prizlerde NYA 3x2,5 mm<sup>2</sup> A 2x1,5 mm<sup>2</sup> kablo kullanılır. Sigortalar prizlerde 16 Amp., aydınlatmada 10 Amp. Konutlardaki tesisat, (sorti ve linyeler) linye hatları 2.5 mm<sup>2</sup> NYM, aydınlatma 1.5 mm NYM kablo, standartlara uygun tertiplenmiş, sorti ve linye otomatik sigorta ile teçhizatlandırılmıştır. İnternet için CCTV kablo hattı çekilmektedir.

## ELECTRICAL-SANITARY INSTALLATION

The clean cold water installation is drawn 1 m outside of the building with 1/2" PVC pprc pipes as flush mounted. FINISHED from plastic cable ducts, 2000 Watt, 220 Volt. NYA 3x2.5 mm<sup>2</sup> A 2x1.5 mm<sup>2</sup> cable is used in sockets. Fuses are 16 Amp in sockets, 10 Amp in lighting. The plumbing in the residences (sortes and lines) line lines are 2.5 mm<sup>2</sup> NYM, lighting is 1.5 mm NYM cable, arranged in accordance with the standards, and are equipped with sorties and line automatic fuses. CCTV cable line is installed for internet.

## İZOLASYON (ISI YALITIMI)



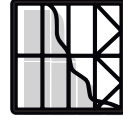
100 mm kalınlığında 44 kg/m<sup>3</sup> yoğunlukta - TS 13501, A1 sınıfı yanmaz, (Knauf Insulation Taşyünü ) kullanım sıcaklığı -55/+760°C, ısı iletkenlik katsayısı :  $\lambda h = 0.040$  W/mK'dır. BOYA Saten

## INSULATION (THERMAL INSULATION)

100 mm thick, 44 kg/m<sup>3</sup> density - TS 13501, A1 class non-combustible, (Knauf Insulation Rockwool) usage temperature -55/+760°C, thermal conductivity coefficient:  $\lambda h = 0.040$  W/mK. PAINT Satin



## İÇ/DIŞ DUVAR



Dış yüzeyde nem bariyeri üzerine; Çimento Esaslı Levha - Fibercement (Hekim-board-Tepepan ) çeşitli ebatlarda ve şekillerde Düz, Yalibaskı veya Fugalı sistem olarak uygulanır. Veya Boardex-Grandex (Dış cephe kapl. levhası) ve mineral sıva veya grenli boya uygulanır.

12,5 mm Alçıpan (Lafarge-Full-board-Corex) uygulanır. (1200mm x 2500mm). İsteğe bağlı olarak 12,5 mm alçıpanın altına 11 mm OSB veya çift kat alçıpan ekstra fiyatlandırılarak uygulanabilmektedir.

## INTERIOR/ OUTER WALL

6

Dış yüzeyde nem bariyeri üzerine; Çimento Esaslı Levha - Fibercement (Hekim-board-Tepepan ) çeşitli ebatlarda ve şekillerde Düz, Yalibaskı veya Fugalı sistem olarak uygulanır. Veya Boardex-Grandex (Dış cephe kapl. levhası) ve mineral sıva veya grenli boya uygulanır.

12,5 mm Alçıpan (Lafarge-Full-board-Corex) uygulanır. (1200mm x 2500mm). İsteğe bağlı olarak 12,5 mm alçıpanın altına 11 mm OSB veya çift kat alçıpan ekstra fiyatlandırılarak uygulanabilmektedir.

## BOYA



## PAINT

**DIŞ DUVAR:**  
Akrilik dış cephe boyası uygulanır. (Marshall / Filli Boya)

**İÇ DUVAR:**  
Akrilik dış cephe boyası uygulanır. (Marshall / Filli Boya)

**EXTERIOR WALL:**  
Acrylic exterior paint is applied. (Marshall / Filli Boya)

**INTERIOR WALL:**  
Acrylic exterior paint is applied. (Marshall / Filli Boya)

## KAPI- PENCERE



## DOOR-WINDOW

7

### DIŞ KAPI:

Kompozit Çelik Kapı: Belirlenen ölçülerde 12 kilitli (Kale kilit) kompozit çelik kapı kullanılmaktadır.

### İÇ KAPILAR:

Lake İç Kapı:

KANAT : 42 mm kalınlıktadır. Kapı kanadının ön ve arka kısmında 6mm kalınlığında MDF plaka vardır.

KASA : 40 mm kalınlıktadır. Komple MDF olup kasanın her iki yanına uygulanmaktadır.

PERVAZ : 16mm kalınlıkta, 80 mm genişliğinde bombeli MDF den üretilmiştir.

### PENCERE:

EGEPEN DECEUNINCK, PİMAPEN, EUROLINE PVC, Zendow tipi PVC Pencere -Kapı Sistemi, 5 odacıklı ve 70 mm genişliğinde pencereler kullanılmaktadır. Sisteme ait ısı iletim katsayısı (Uf), IFT Rosenheim'da yapılan testler sonucunda 1,4 -1,5 W / m2K olarak belirlenmiştir.

### CAMLAR

4+16+4 mm Isı cam - Vasistas Pencere Camları: 4 mm. buzlu cam olarak uygulanır. İsteğe göre Konfor veya Sinerji cam veya karolajlı (çıtalı) cam uygulamaları yapılabilmektedir. SİNEKLİK Sürgü kapılarda pileli, diğer açılır pencerelerde menteşeli sineklik kullanılır.

### EXTERIOR DOOR:

Composite Steel Door: In determined dimensions

Composite with 12 locks (Castle lock) steel door is used

### INTERIOR DOORS:

Lacquered Interior Door:

### WING:

It is 42 mm thick. There is a 6mm thick MDF plate on the front and back of the door leaf.

### CASE:

It is 40 mm thick. It is made of MDF and is applied to both sides of the case.

### COVER:

It is produced from curved MDF with a thickness of 16 mm and a width of 80 mm.

### WINDOW:

EGEPEN DECEUNINCK, PİMAPEN, EUROLINE PVC, Zendow type PVC Window-Door System, Windows with 5 chambers and 70 mm width are used. Heat conduction of the system coefficient (Uf) was determined as 1.4 -1.5 W / m2K as a result of the tests carried out at IFT Rosenheim. determined.

### WINDOWS

4+16+4 mm Insulating glass - Transom Window Glasses: 4 mm. Applied as frosted glass. on demand

Comfort or Synergy glass or tiled (slatted) glass applications can be made according to the requirements.

FLY SWIPE Pleated in sliding doors, hinged fly screens are used in other opening windows.





# INSTITUTIONAL STRUCTURES

KURUMSAL YAPILAR\*

## EDUCATIONAL BUILDINGS

EĞİTİM YAPILARI\*



+  
○ T.R. Ministry of Agriculture  
and Forestry  
Nursery Building

●●●●● T.C. Tarım ve Orman Bakanlığı Kres Binası\*

ANKARA  
1800 m<sup>2</sup>



# INSTITUTIONAL STRUCTURES

KURUMSAL YAPILAR\*

EDUCATIONAL BUILDINGS

EĞİTİM YAPILARI\*



Ibrahim Öktem

Primary School İbrahim Öktem İlkokulu\*

İSTANBUL  
750 m<sup>2</sup>





# INSTITUTIONAL STRUCTURES

KURUMSAL YAPILAR\*

## EDUCATIONAL BUILDINGS

EĞİTİM YAPILARI\*



Karabük University  
Light Steel Roof

Karabük Üniversitesi Hafif Çelik Çatı\*

  
**KARABÜK**  
750 m<sup>2</sup>

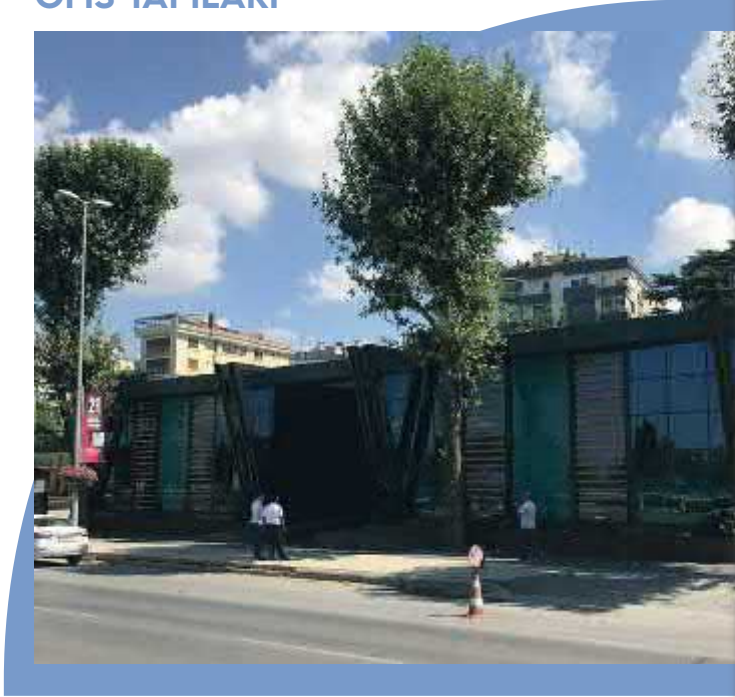


# INSTITUTIONAL STRUCTURES

KURUMSAL YAPILAR\*

OFFICE BUILDINGS

OFİS YAPILARI\*



Kartal Sales

Office

Kartal Satış Ofisi\*

İSTANBUL  
567 m<sup>2</sup>





# INSTITUTIONAL STRUCTURES

KURUMSAL YAPILAR\*

OFFICE BUILDINGS

OFİS YAPILARI\*



+

o



Incek

Sales Office

Incek Satış Ofisi\*

ANKARA  
150 m<sup>2</sup>



# INSTITUTIONAL STRUCTURES

KURUMSAL YAPILAR\*

OFFICE BUILDINGS

OFİS YAPILARI\*



Loca Sales

Office

Loca Satış Ofisi\*

İSTANBUL  
95 m<sup>2</sup>



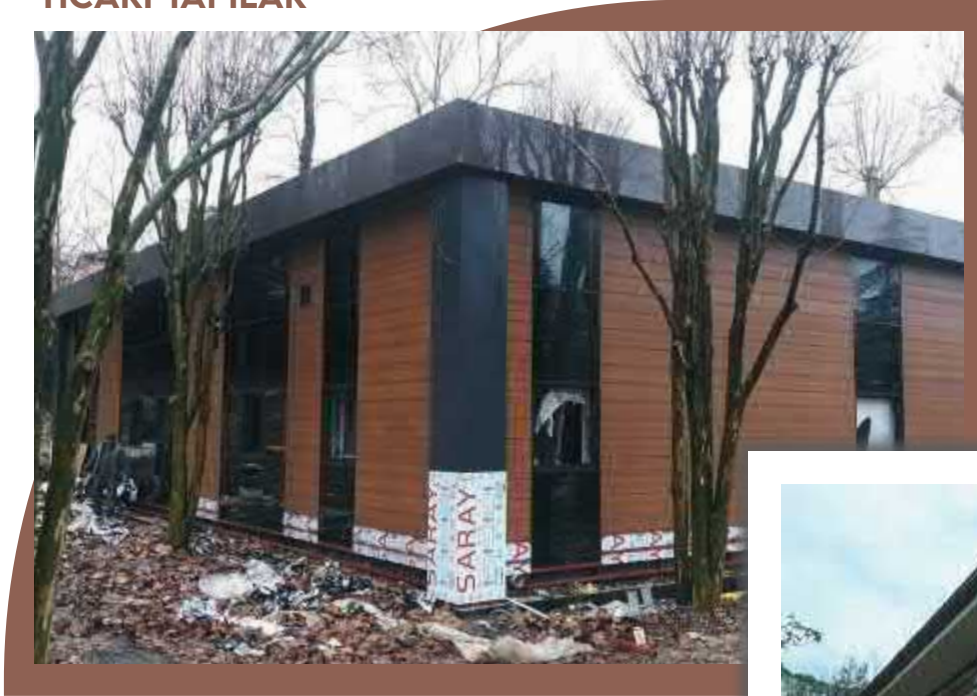


# INSTITUTIONAL STRUCTURES

KURUMSAL YAPILAR\*

## COMMERCIAL BUILDINGS

TİCARİ YAPILAR\*



Fethi Paşa  
Korusu\*

İSTANBUL  
210 m<sup>2</sup>



# INSTITUTIONAL STRUCTURES

KURUMSAL YAPILAR\*

## COMMERCIAL BUILDINGS

TİCARİ YAPILAR\*



Auto Gallery

Oto Galeri\*



KIBRIS  
500 m<sup>2</sup>





# INSTITUTIONAL STRUCTURES

KURUMSAL YAPILAR\*

HEALTH STRUCTURES

SAĞLIK YAPILARI\*



+

○



Ataturk Airport  
Prof. Dr. Murat Dilmener  
Sahra Hospital  
Atatürk Havalimanı Sahra Hastanesi\*

İSTANBUL  
75.000 m<sup>2</sup>



# INSTITUTIONAL STRUCTURES

KURUMSAL YAPILAR\*

## HEALTH STRUCTURES

SAĞLIK YAPILARI\*



A.Ş.Ş

Cat Rehabilitation Center

A.Ş.Ş Kedi Rehabilitasyon Merkezi\*

  
**ANKARA**  
715 m<sup>2</sup>





# INSTITUTIONAL STRUCTURES

KURUMSAL YAPILAR\*

SOCIAL STRUCTURES

SOSYAL YAPILAR\*



+

o



Vodafone

Smart Village

Vodafone Akıllı Köy\*



# INSTITUTIONAL STRUCTURES

KURUMSAL YAPILAR\*

SOCIAL STRUCTURES

SOSYAL YAPILAR\*



+

o



Attenpark  
Guest House

Attenpark Konuk Evi\*

ANKARA  
252 m<sup>2</sup>



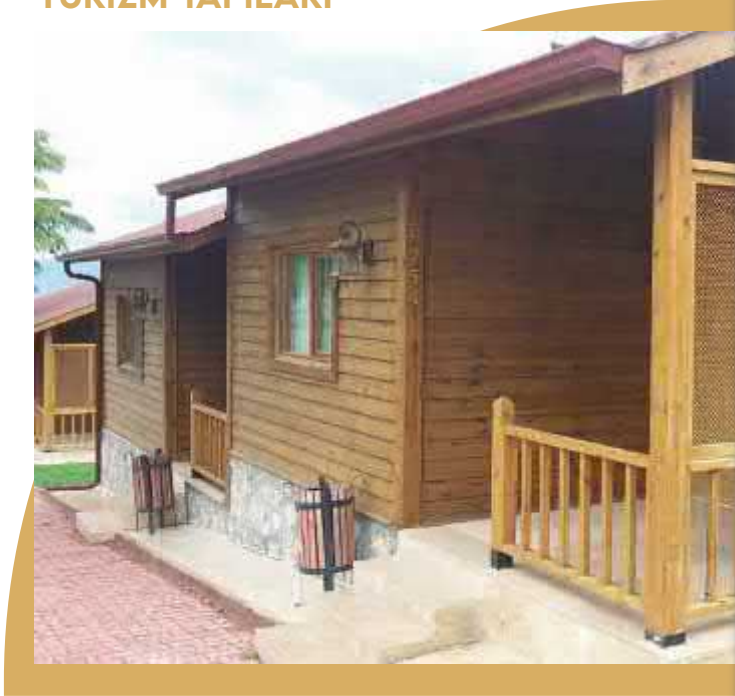


# INSTITUTIONAL STRUCTURES

KURUMSAL YAPILAR\*

TOURISM STRUCTURES

TURİZM YAPILARI\*



+

○



Fimar Hotel

Fimar Otel\*

AMASYA  
80 m<sup>2</sup>



# INSTITUTIONAL STRUCTURES

KURUMSAL YAPILAR\*

TOURISM STRUCTURES

TURİZM YAPILARI\*



Assos Hotel

Assos Otel\*

ÇANAKKALE  
75 m<sup>2</sup>





# INSTITUTIONAL STRUCTURES

KURUMSAL YAPILAR\*

## TOURISM STRUCTURES

TURİZM YAPILARI\*



Vanessa Hotel

Vanessa Otel\*



AYDIN  
178 m<sup>2</sup>



# INSTITUTIONAL STRUCTURES

KURUMSAL YAPILAR\*

## INDUSTRIAL BUILDINGS

ENDÜSTRİYEL YAPILAR\*



+

o



Girişim Electricity

Steel Roof

Girişim Elektrik Çelik Çatı\*





# INSTITUTIONAL STRUCTURES

KURUMSAL YAPILAR\*

INDUSTRIAL BUILDINGS

ENDÜSTRİYEL YAPILAR\*



+

o



Yıldızlar Holding

Steel Roof

Yıldızlar Holding Çelik Çatı\*







# INSTITUTIONAL STRUCTURES

KURUMSAL YAPILAR\*

## INDUSTRIAL BUILDINGS

ENDÜSTRİYEL YAPILAR\*



Temsan  
In-Factory  
Office Building

Temsan Fabrika İçi Ofis Binası\*

ANKARA  
440 m<sup>2</sup>



# INSTITUTIONAL STRUCTURES

KURUMSAL YAPILAR\*

PUBLIC BUILDINGS

KAMUSAL YAPILAR\*



+

o



TOKI

Earthquake Houses

TOKI Deprem Konutları\*

  
**ELAZIĞ**  
220 PIECES/ADET 90 m<sup>2</sup>



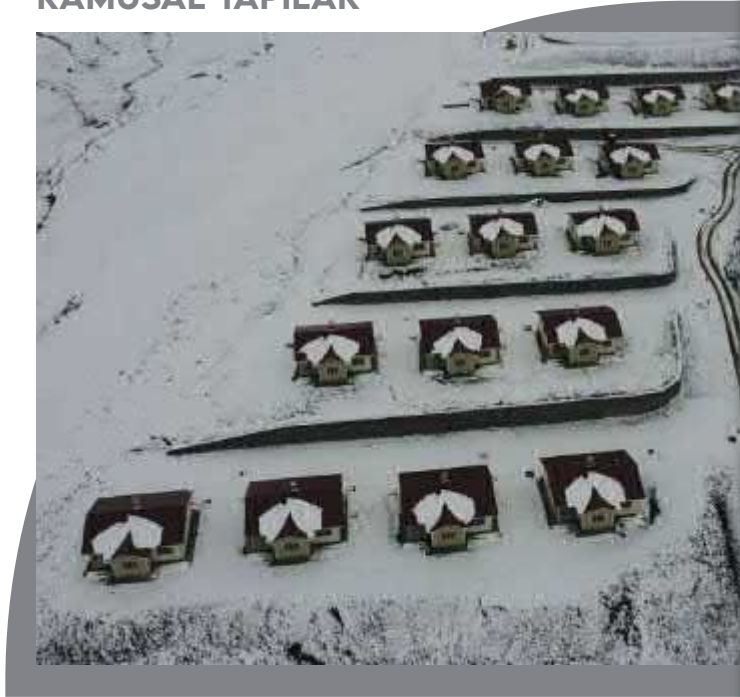


# INSTITUTIONAL STRUCTURES

KURUMSAL YAPILAR\*

PUBLIC BUILDINGS

KAMUSAL YAPILAR\*



+

o



TOKI

Earthquake Houses

TOKI Deprem Konutları\*



ERZURUM

220 PIECES/ADET 90 m<sup>2</sup>



# INSTITUTIONAL STRUCTURES

KURUMSAL YAPILAR\*

PUBLIC BUILDINGS

KAMUSAL YAPILAR\*



Fisherman

State

Balıkçı Hali\*



ANKARA  
258 m<sup>2</sup>





# INSTITUTIONAL STRUCTURES

KURUMSAL YAPILAR\*

PUBLIC BUILDINGS

KAMUSAL YAPILAR\*



+

o



Kapıkule

Border Gate

Edirne Kapıkule Sınır Kapısı\*

EDİRNE  
250 m<sup>2</sup>

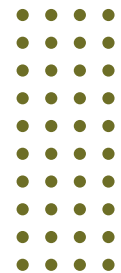


# INSTITUTIONAL STRUCTURES

KURUMSAL YAPILAR\*

MULTIPLE PROJECTS

ÇOKLU PROJELER\*



Loft Koru\*



ANKARA  
8 PIECES/ADET 120 m<sup>2</sup>





# INSTITUTIONAL STRUCTURES

KURUMSAL YAPILAR\*

MULTIPLE PROJECTS

ÇOKLU PROJELER\*



Asland

Architecture

Asland Mimarlık



İSTANBUL

12 PIECES/ADET 70-80 m<sup>2</sup>



# INSTITUTIONAL STRUCTURES

KURUMSAL YAPILAR\*

MULTIPLE PROJECTS

ÇOKLU PROJELER\*



+

○



“Deep Blue”

İSTANBUL  
30 PIECES/ADET 205 m<sup>2</sup>





# INDIVIDUAL STRUCTURES

BİREYSEL YAPILAR\*

SINGLE STOREY

TEK KATLI\*



  
**ANKARA**  
115 m<sup>2</sup>



# INDIVIDUAL STRUCTURES

BİREYSEL YAPILAR\*

SINGLE STOREY

TEK KATLI\*



ANKARA  
184 m<sup>2</sup>



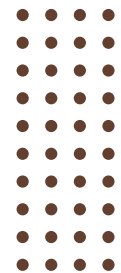


# INDIVIDUAL STRUCTURES

BİREYSEL YAPILAR\*

SINGLE STOREY

TEK KATLI\*



ANKARA  
90 m<sup>2</sup>



# INDIVIDUAL STRUCTURES

BİREYSEL YAPILAR\*

TWO STOREY

İKİ KATLI\*



  
**ANKARA**  
169 m<sup>2</sup>





# INDIVIDUAL STRUCTURES

BİREYSEL YAPILAR\*

TWO STOREY

İKİ KATLI\*



ANKARA  
142 m<sup>2</sup>



# INDIVIDUAL STRUCTURES

BİREYSEL YAPILAR\*

TWO STOREY

İKİ KATLI\*







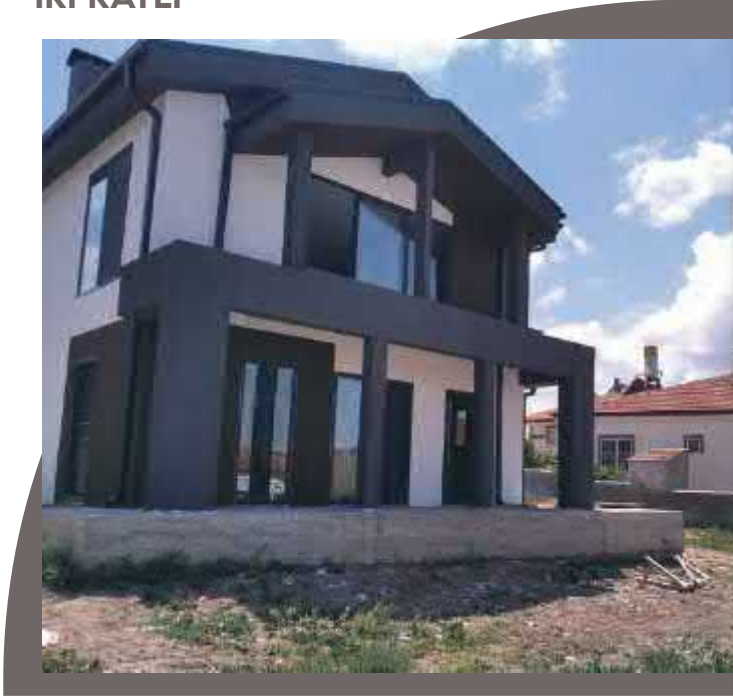
60

# INDIVIDUAL STRUCTURES

BİREYSEL YAPILAR\*

TWO STOREY

İKİ KATLI\*



NEVŞEHİR  
142 m<sup>2</sup>

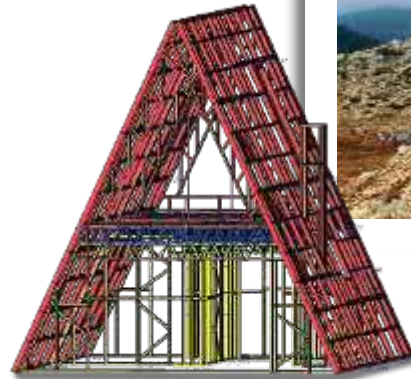


# INDIVIDUAL STRUCTURES

BİREYSEL YAPILAR\*

## TRIANGLE HOUSE

ÜÇGEN EV\*



TEOCAD\*

ANTALYA  
142 m<sup>2</sup>



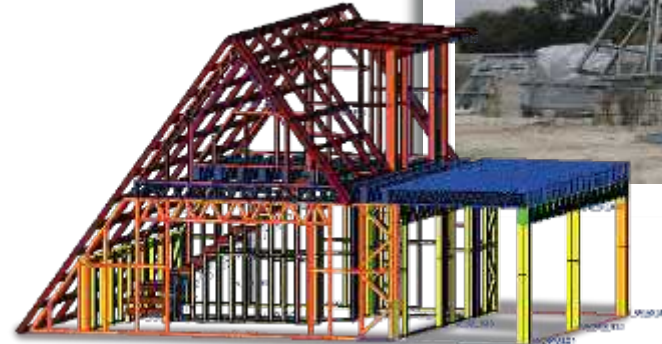


# INDIVIDUAL STRUCTURES

BİREYSEL YAPILAR\*

## TRIANGLE HOUSE

ÜÇGEN EV\*



TEOCAD\*

GAZİANTEP  
120 m<sup>2</sup>

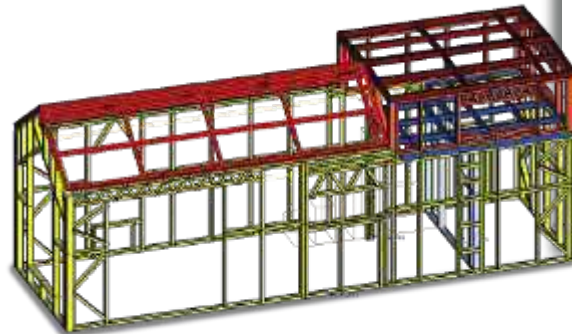


# INDIVIDUAL STRUCTURES

BİREYSEL YAPILAR\*

## TINY HOUSE

TEKERLEKLİ EV\*



TEOCAD\*

2,5M x 8M



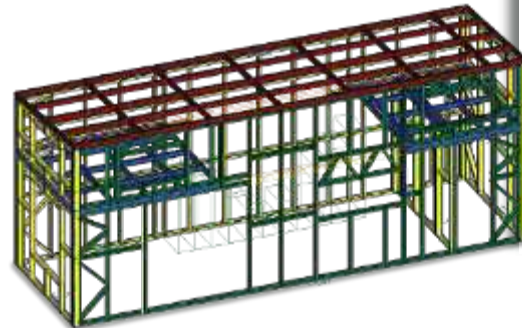


# INDIVIDUAL STRUCTURES

BİREYSEL YAPILAR\*

## TINY HOUSE

TEKERLEKLİ EV\*



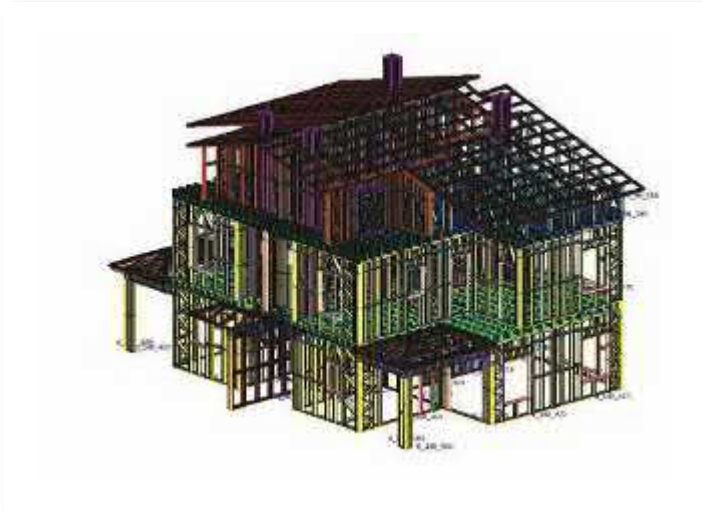
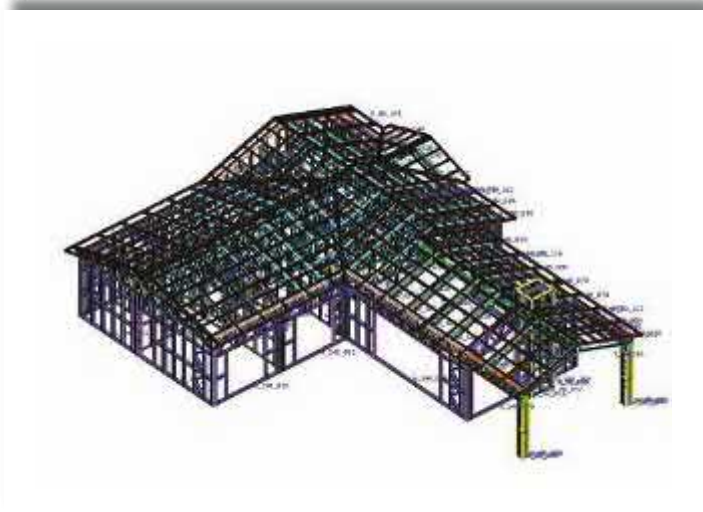
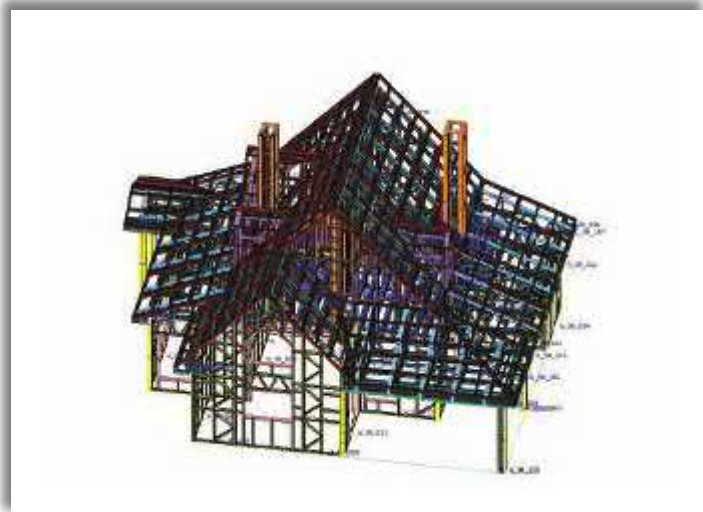
TEOCAD\*



2,5M x 8M



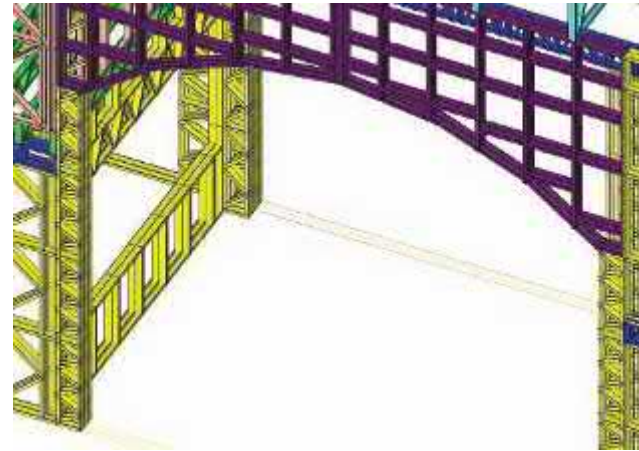
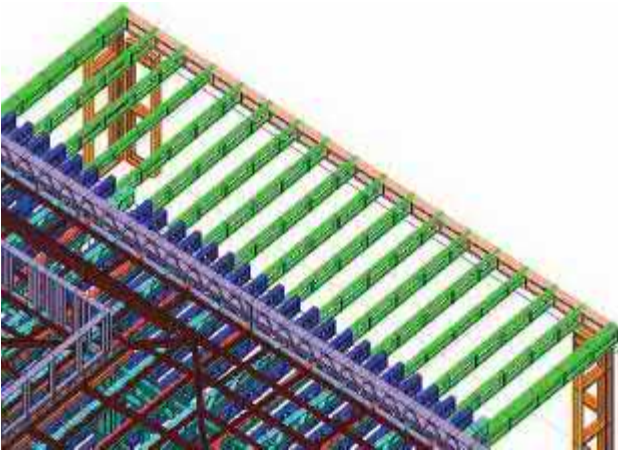
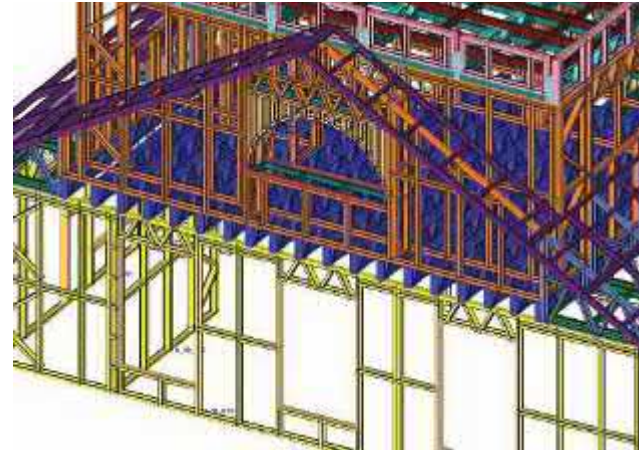
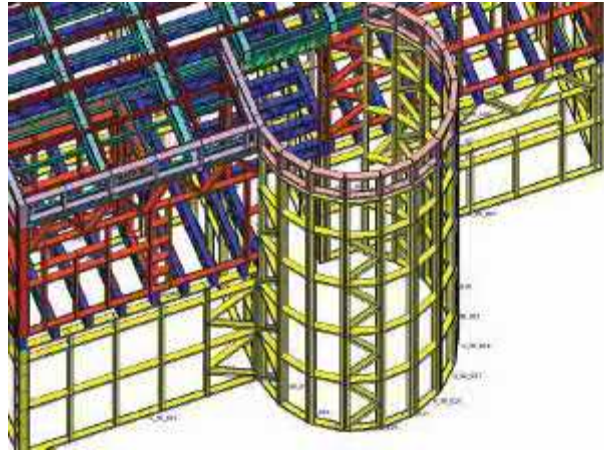
# TEOCAD PROGRAM







# TEOCAD PROGRAM





# INTERIOR DETAILS

İÇ DETAYLAR\*







# INTERIOR DETAILS

İÇ DETAYLAR\*





# INTERIOR DETAILS

İÇ DETAYLAR\*







# INTERIOR DETAILS

İÇ DETAYLAR\*





# STEEL IMAGES

ÇELİK GÖRSELLERİ\*







# STEEL IMAGES

ÇELİK GÖRSELLERİ\*





# STEEL IMAGES

ÇELİK GÖRSELLERİ\*







# STEEL IMAGES

ÇELİK GÖRSELLERİ\*





# CONSTRUCTION SITE PHOTOS

ŞANTIYE FOTOĞRAFLARI\*







# CONSTRUCTION SITE PHOTOS

ŞANTIYE FOTOĞRAFLARI\*





# CONSTRUCTION SITE PHOTOS

ŞANTIYE FOTOĞRAFLARI\*







Power of the Steel  
Çeligin Gücü\*

**LIGHT STEEL STRUCTURES**  
**HAFIF ÇELİK YAPILAR\***